

ARIA®

THE NEWEST MEMBER OF OUR LUXURY CLASS A DIESEL
LINE THOUGHTFULLY DESIGNED WITH YOU IN MIND.



THOR
MOTOR COACH

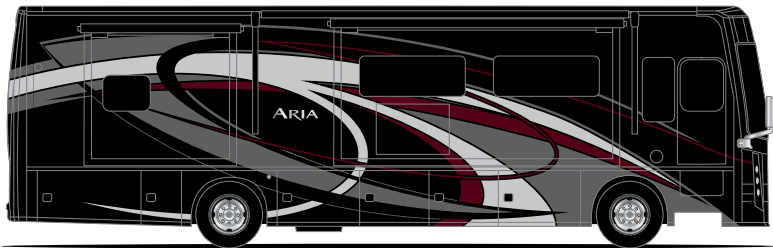


ARIA[®]

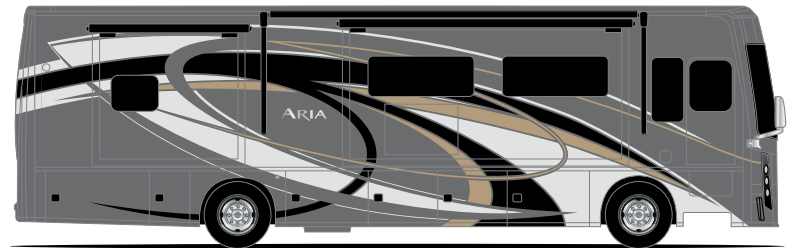
Discover the beauty, power and sophistication that are only available in Aria[®] motorhomes. A masterwork with exceptional features, compelling full-body paints, and eye catching interiors. It's no wonder the Aria has been a leader in the diesel-pusher market since its introduction.



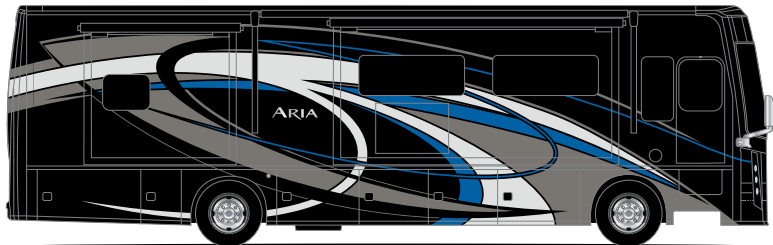
EXTERIOR OPTIONS



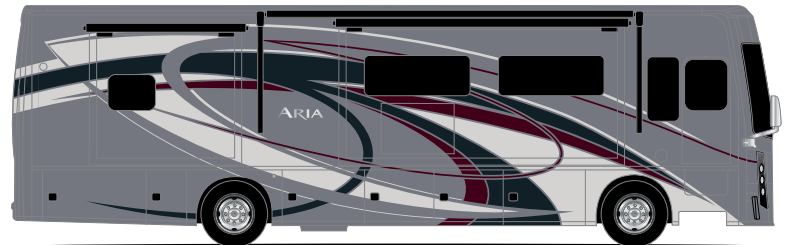
HERITAGE



ODYSSEY



SAPPHIRE



STERLING



A | FULL-BODY PAINT

A striking exterior graphics design provides a jaw-dropping experience. The paint process includes alternating layers of paint with sanding in between to provide a glass-like exterior finish.

B | WHISPER QUIET AIR CONDITIONING

Specialized air conditioning system designed to provide maximum cooling. The multiple air returns help move air more efficiently, while the integration with the roof air conditioners reduces interior fan noise.

C | POWER PATIO AWNING WITH INTEGRATED LED LIGHTING

A legless, lateral arm awning is fully encased in a metal box protecting it during driving. When extended, the awning does not have legs intruding into the camp area and it has the ability to self-retract in windy situations.

D | KEYLESS ENTRY SYSTEM

The front door and storage compartments can be locked with just a push of a button on the remote key fob. The basement doors also have a secondary switch to lock all the doors from the interior of the coach.

E | WIDE ENTRY

An extra-large entry door provides easy entry, especially when carrying large items like groceries.

F | SIDE VISION CAMERAS

Side vision cameras integrated into the exterior mirror housing vastly increase the line of sight along the side of the coach, helping keep you safe on the road.

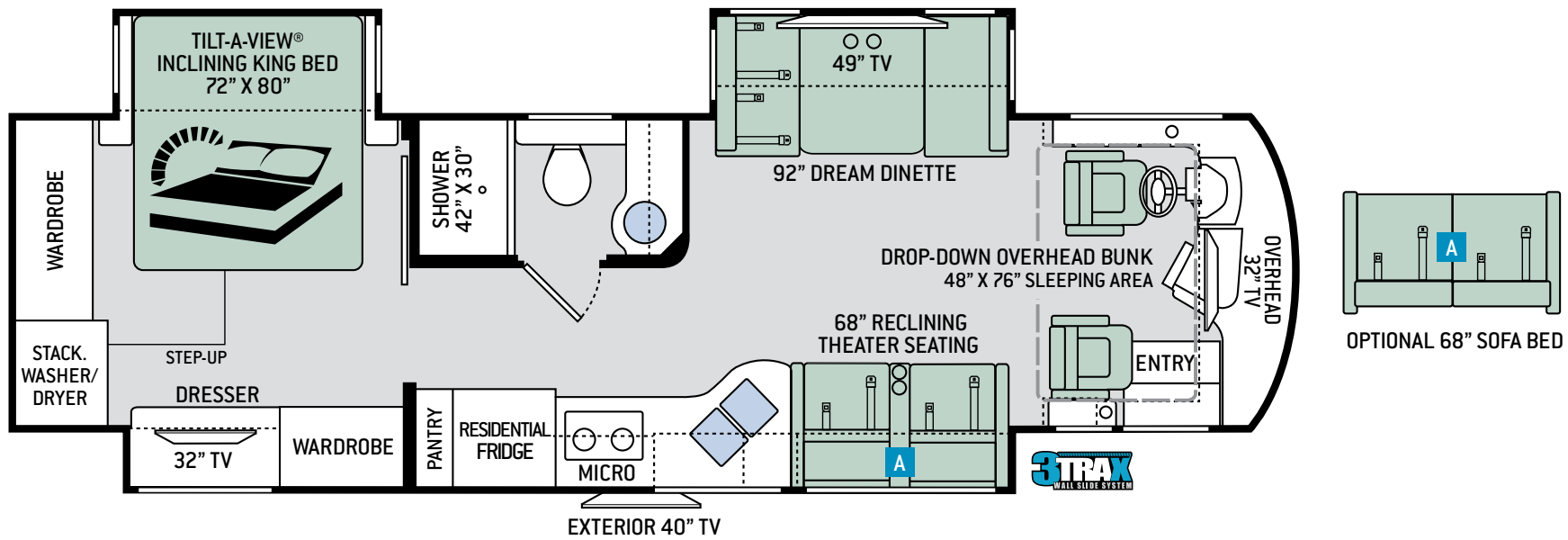






ARIA PHOTO GALLERY

FLOOR PLANS



3401

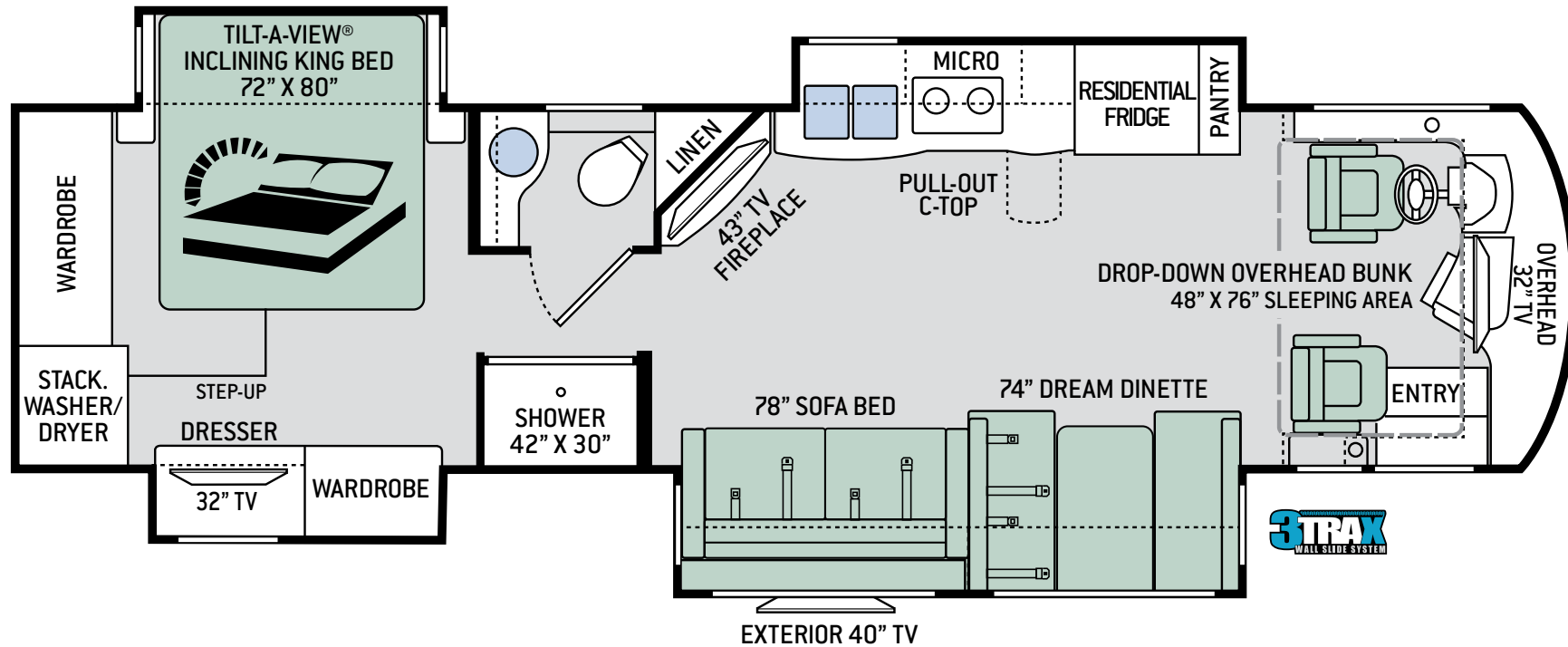
3401 FEATURES

- » Under 35 ft. (34' 9") diesel - state and national park friendly
- » True 10,000-lbs towing with Allison 3000MH transmission
- » Power drop-down hide-away overhead bunk with Cotton Cloud™ Mattress
- » Full house multiplex wiring system, app-enabled and surge guard electrical protection
- » Reclining theater seating across from 49" LED HDTV
- » Massive 92" dream dinette with cup holders
- » Pull-out pantry in kitchen
- » 42"x30" fiberglass shower with built-in seat
- » King size bed with Tilt-A-View® inclining bed mechanism
- » Dual wardrobes and deep dresser drawers in master bedroom
- » Stackable washer and dryer standard

SPECIFICATIONS

3401	
CHASSIS	Freightliner XC-R
GROSS VEHICLE (GVWR)	32,400
GROSS COMBINED (GCWR)	42,400
WHEEL BASE	208"
EXTERIOR LENGTH (W/O LADDER)	34'-7"
EXTERIOR HEIGHT (W/AC)	12'-6"
EXTERIOR WIDTH (W/O MIRRORS)	101"
INTERIOR HEIGHT (LIVING AREA)	84"
AWNING SIZE	20'
FUEL (GAL)	100
LPG (LBS)	105
FRESH/WASTE/GRAY WATER (GAL)	91 / 51 / 51
WATER HEATER (GAL)	10
FURNACE (BTUS)	35,000
EXTERIOR STORAGE CAPACITY (CU. FT.)	125
HITCH WEIGHT RATING (LBS)	10,000

FLOOR PLANS



3601

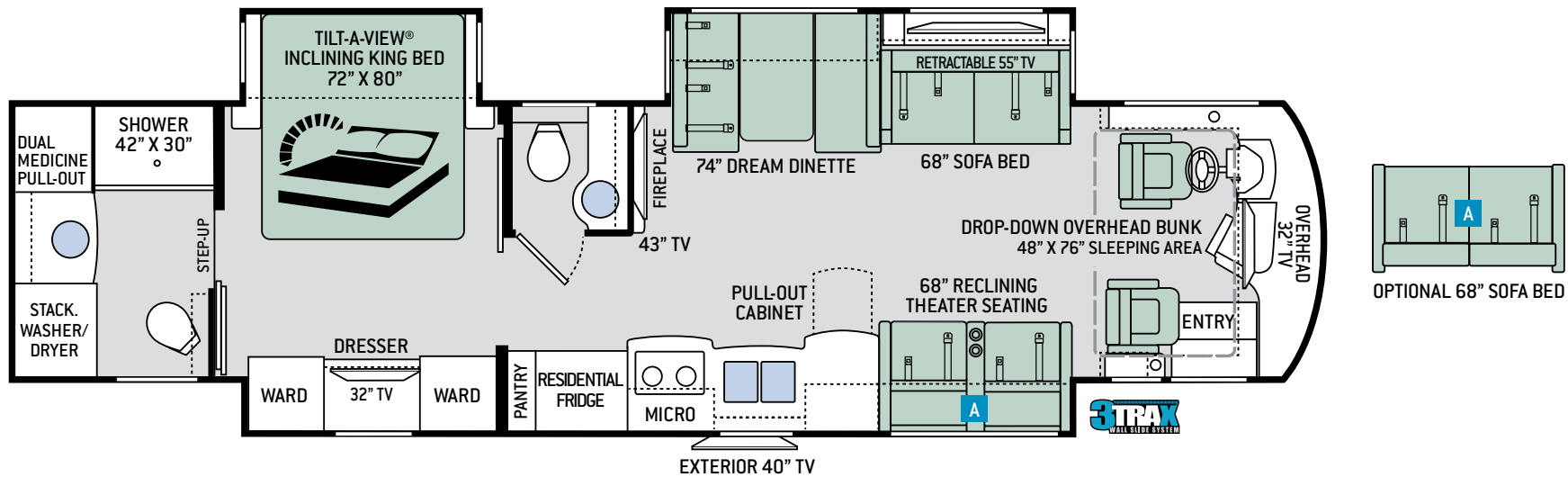
3601 FEATURES

- » 36'-3" quad slide and split bath floorplan diesel pusher
- » True 10,000-lbs towing with Allison 3000MH transmission
- » Power drop-down hide-away overhead bunk with Cotton Cloud™ Mattress
- » Full house multiplex wiring system, app-enabled and surge guard electrical protection
- » Pull-out counter top extension in kitchen
- » Electric fireplace with remote under 43" LED HDTV
- » Curb-side dinging with 74" dream dinette on the camping side
- » 42" x 30" fiberglass shower with built-in seat
- » King size bed with Tilt-a-View® inclining bed mechanism
- » Dual wardrobes and 10 deep drawers in master bedroom
- » Stackable washer & dryer standard

SPECIFICATIONS

3601	
CHASSIS	Freightliner XC-R
GROSS VEHICLE (GVWR)	32,400
GROSS COMBINED (GCWR)	42,400
WHEEL BASE	228"
EXTERIOR LENGTH (W/O LADDER)	36'-3"
EXTERIOR HEIGHT (W/AC)	12'-6"
EXTERIOR WIDTH (W/O MIRRORS)	101"
INTERIOR HEIGHT (LIVING AREA)	84"
AWNING SIZE	12'-4"
FUEL (GAL)	100
LPG (LBS)	105
FRESH/WASTE/GRAY WATER (GAL)	91 / 51 / 51
WATER HEATER (GAL)	10
FURNACE (BTUS)	35,000
EXTERIOR STORAGE CAPACITY (CU. FT.)	160
HITCH WEIGHT RATING (LBS)	10,000

FLOOR PLANS



3901

3901 FEATURES

- » 39' - 11" diesel pusher with full rear master bath and half bath
- » True 10,000-lbs towing with Allison 3000MH transmission
- » Power drop-down hide-away overhead bunk with Cotton Cloud™ Mattress
- » Full house multiplex wiring system, app-enabled and surge guard electrical protection
- » Reclining theater seating facing retractable 55" LED HDTV
- » 68" sofa bed gives opposing seating ideal for entertaining
- » Electric fireplace with remote under 43" LED HDTV Mid-ship
- » King size bed with Tilt-a-View® inclining bed mechanism
- » 42"x30" fiberglass shower with built-in seat
- » Stackable washer and dryer

SPECIFICATIONS

3901	
CHASSIS	Freightliner XC-R
GROSS VEHICLE (GVWR)	35,320
GROSS COMBINED (GCWR)	45,320
WHEEL BASE	272"
EXTERIOR LENGTH (W/O LADDER)	39'-11"
EXTERIOR HEIGHT (W/AC)	12'-6"
EXTERIOR WIDTH (W/O MIRRORS)	101"
INTERIOR HEIGHT (LIVING AREA)	84"
AWNING SIZE	20'
FUEL (GAL)	100
LPG (LBS)	105
FRESH/WASTE/GRAY WATER (GAL)	91 / 51 / 51
WATER HEATER (GAL)	10
FURNACE (BTUS)	35,000
EXTERIOR STORAGE CAPACITY (CU. FT.)	215
HITCH WEIGHT RATING (LBS)	10,000



4000 FEATURES

- » Two full bathroom bunkhouse diesel with sleeping up to 10
- » Tub and shower in middle bathroom ideal for kids or guests
- » True 10,000-lbs towing with Allison 3000MH transmission
- » Power drop-down hide-away overhead bunk with Cotton Cloud™ Mattress
- » Full house multiplex wiring system, app enabled and surge guard electrical protection
- » 49" LED HDTV across from 70" sofa bed in living space
- » Massive 88" dream dinette with cup holders
- » King size bed with Tilt-a-View® inclining bed mechanism
- » Each bunk includes a 15" TV and DVD player
- » Dual sinks in large expanding master bathroom
- » Stackable washer and dryer

SPECIFICATIONS

4000	
CHASSIS	Freightliner XC-R
GROSS VEHICLE (GVWR)	35,320
GROSS COMBINED (GCWR)	45,320
WHEEL BASE	284"
EXTERIOR LENGTH (W/O LADDER)	40'-11"
EXTERIOR HEIGHT (W/AC)	12'-6"
EXTERIOR WIDTH (W/O MIRRORS)	101"
INTERIOR HEIGHT (LIVING AREA)	84"
AWNING SIZE	20'
FUEL (GAL)	100
LPG (LBS)	105
FRESH/WASTE/GRAY WATER (GAL)	91 / 51 / 70
WATER HEATER (GAL)	10
FURNACE (BTUS)	(2) 20,000
EXTERIOR STORAGE CAPACITY (CU. FT.)	240
HITCH WEIGHT RATING (LBS)	10,000

L A Y T H E G R O U N D W O R K F O R S A F E T R A V E L S



A home needs a strong
foundation and that is
especially true for the home
that rolls down the road.
The Atlas™ Foundation
under the Aria provides an
excellent base to construct
your new motorhome.

The Atlas Foundation™ is the premier building platform and substructure in the industry. Thor Motor Coach has partnered with industry leaders, Freightliner® Custom Chassis and MORryde® International, to bring you this innovative building design.

Innovation doesn't just happen, it takes a dedicated team of the very best designers and engineers working together to tackle the challenges in the road ahead. From the very start our main focus is you, and you will see that from the moment you step into the motorhome.

The Atlas Foundation™ is a fully integrated basement foundation design. This means that trusses, cross members and ladder assemblies are pre-formed and laser-cut from high-strength, 50 grade HSLA steel, which provides greater resistance to corrosion than carbon steel.

The structure is assembled and welded on a flat, laser-leveled table, then hoisted onto the OEM chassis and welded into place. This system includes a built-in, unit floor leveling system, which maintains the true squareness of the motorhome body and helps prevent crowning.

Fiberglass lined, pass-through storage bays span the width of the unit with steel support under each of the compartments. The steel sub-frame can support more than 1,000 pounds per compartment. Designed to facilitate greater luminosity, the interior mold and mildew resistant fiberglass lining is white, making it easier to see within the compartment in low-light situations.

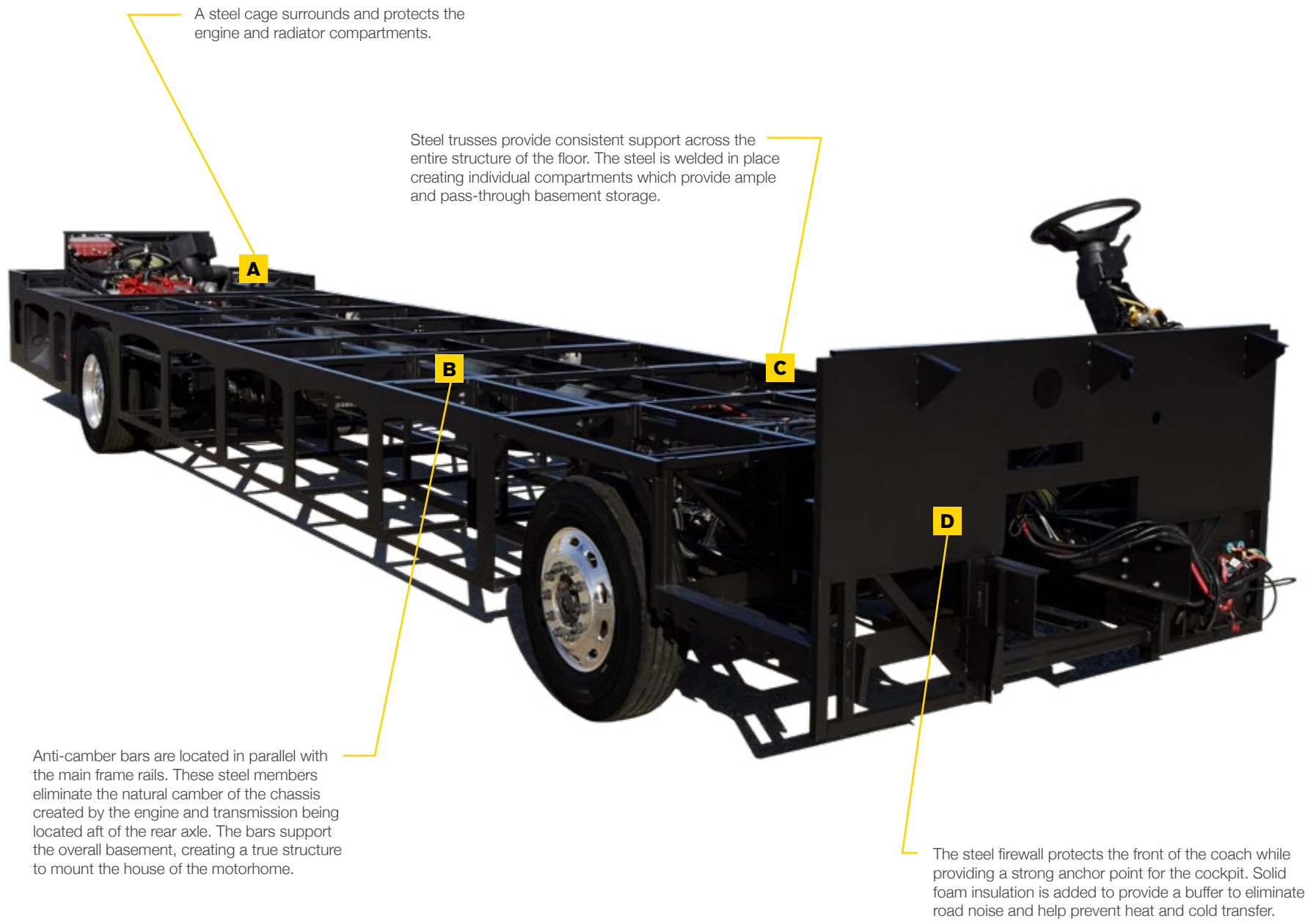
Built strong and insulated to help reduce heat transfer, the firewall and rear engine cage are fully encased in steel, which eliminates engine and road noise.

You're the one who will rely on our innovation for years to come. You're the one who will feel the strength of the Atlas Foundation™ as you drive the open road. You're the one who will benefit from our hard work and commitment to excellence.

We didn't just design the Atlas Foundation™, we crafted it to fit you.



Driven By You



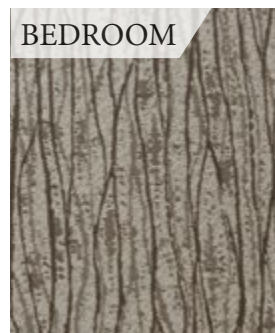
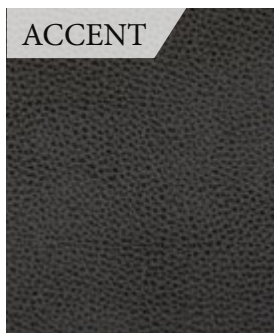
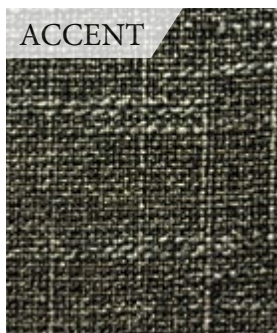
A steel cage surrounds and protects the engine and radiator compartments.

Steel trusses provide consistent support across the entire structure of the floor. The steel is welded in place creating individual compartments which provide ample and pass-through basement storage.

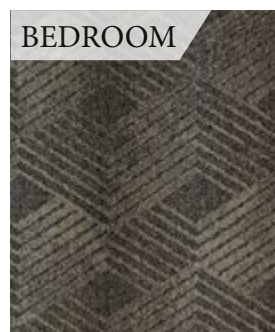
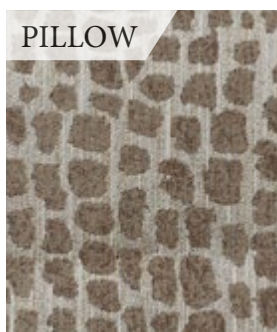
Anti-camber bars are located in parallel with the main frame rails. These steel members eliminate the natural camber of the chassis created by the engine and transmission being located aft of the rear axle. The bars support the overall basement, creating a true structure to mount the house of the motorhome.

The steel firewall protects the front of the coach while providing a strong anchor point for the cockpit. Solid foam insulation is added to provide a buffer to eliminate road noise and help prevent heat and cold transfer.

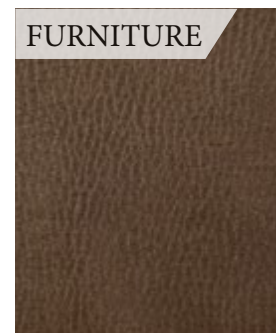
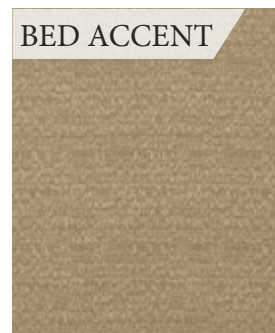
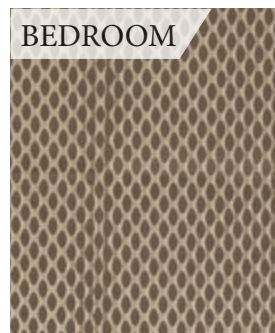
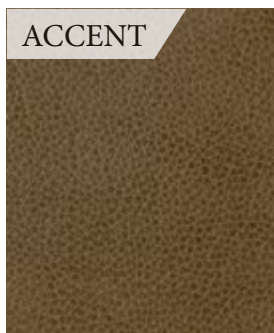
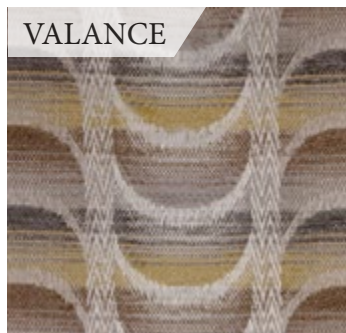
I N T E R I O R O P T I O N S



CRYSTAL SHORES

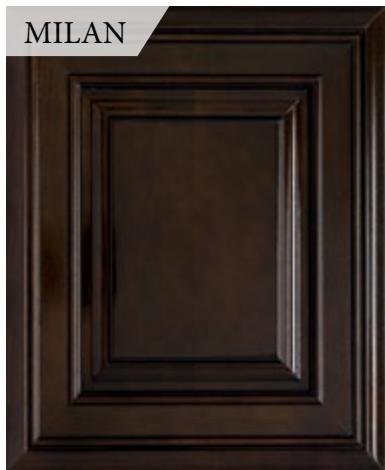


PEBBLE RIDGE



RIVER MARBLE

MILAN



NEWPORT



PACIFIC



KITCHEN & DINETTE COUNTERTOPS



BED & BATH COUNTERTOPS



POLISHED PORCELAIN TILE FLOORING







ARIA PHOTO GALLERY

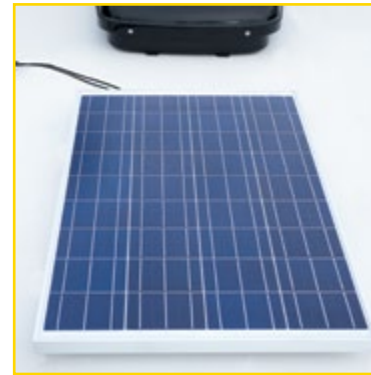
SPECIAL FEATURES



Freightliner® XC-R Raised
Rail Chassis with Atlas™
Foundation



Cummins® Onan RV QD 8000
Diesel Generator



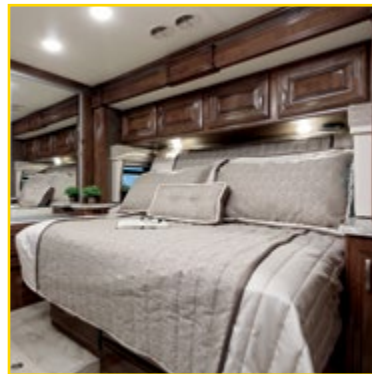
100-watt Solar Charging
System with Power Controller



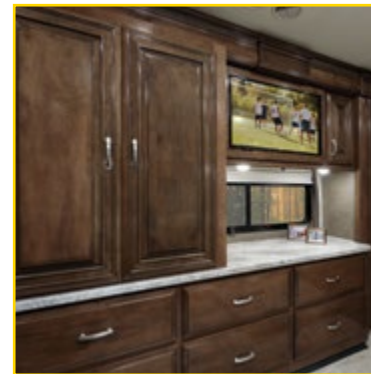
Winegard® Connect
4G/Wifi-System



Power Drop-Down
Hide-Away Overhead Bunk
with Cotton Cloud™ Mattress



Denver Mattress® King Size
Bed with Tilt-a-View®
and USB Charging
Ports in Bedroom



High-Gloss Glazed Solid
Wood Cabinet Doors and
Nickel Finish Hardware



Stackable Washer and Dryer



Multiplex Wiring System with
7" Screen and App Control



Dual Touchscreen Dash Radio
with Bluetooth® and GPS
Navigation/Back-Up Monitor
with Three Camera System



FEATURED HIGHLIGHTS

CONSTRUCTION & EXTERIOR

- » Freightliner® XC-R Raised Rail Chassis with Atlas™ Foundation
- » Cummins® ISB-XT 6.7L Engine with 360HP & 800 lb.-ft. Torque
- » 6-Speed Allison MH-3000 Automatic Transmission
- » Air-Ride™ Suspension
- » I-Beam Front Axle with 55° Wheel Cut
- » Exhaust Brake
- » Sachs® Shock Absorbers
- » 100-gallon Fuel Tank with Dual Fills
- » One-Piece Fiberglass Front & Rear Caps
- » Invisible Front Paint Protection
- » One-Piece Windshield
- » Full-Body Paint Packages with Gel-Coat Sidewalls
- » Automatic Leveling Jacks with Touchpad Controls
- » Side-Hinged Locking Compartment Doors
- » Basement Pass-Through Storage
- » Easy Slide Storage Tray
- » Power Entry Door & Patio Lateral Arm Awnings with Integrated LED Lighting
- » Slideout Room Topper Awnings
- » Patio Light (Both Sides)

- » Roof Ladder
- » Frameless Dual Pane Windows
- » 10,000-lb. Trailer Hitch with 7-pin Round Connector

AUTOMOTIVE & COCKPIT

- » 8" Touchscreen Dash Radio with Bluetooth®, GPS Navigation & SiriusXM® Radio Capability
- » Back-Up Monitor with Three Camera System
- » Chrome Heated/Power Mirrors with Integrated Side View Cameras
- » Leatherette Reclining/Swivel Power Adjustable Captain's Chairs (Passenger Seat has Electric Footrest)
- » Driver & Passenger Overhead Storage Cabinetry
- » Tilt/Telescoping Steering Column
- » Cruise Control
- » Emergency Engine Start Switch
- » Map Lights
- » Dash Fans
- » Air Horns
- » Fog Lights
- » Power Solar & Privacy Shades on Windshield
- » Manual Solar & Privacy Shades on Side Windows
- » Electric Step Cover

- » 275/80R 22.5" Radial Tires with Aluminum Wheels
- » Power Drop-Down Hide-Away Overhead Bunk with Cotton Cloud™ Mattress

AUTOMOTIVE & COCKPIT OPTION

- » Remove Power Drop-Down Hide-Away Overhead Bunk with Cotton Cloud™ Mattress

INTERIOR

- » Polished Porcelain Tile Throughout
- » Ceiling Ducted Whisper Air™ Central Cooling System
- » LED Lighting
- » High-Gloss Glazed Cabinetry with Solid Wood Raised Panel Cabinet Doors & Nickel Finish Hardware
- » Solid Wood Veneer
- » Window Privacy Roller Shades
- » Leatherette Sofa Bed (3601, 3901 & 4000)
- » Leatherette Reclining Theater Seating with Footrests (3401 & 3901)
- » Leatherette Dream Dinette® Booth
- » Electric Fireplace with Remote Control (3601 & 3901)



INTERIOR OPTION

- » Leatherette Sofa Bed (3401 & 3901)

KITCHEN

- » 16 cu. ft. Stainless Steel Residential Refrigerator with Ice Maker
- » Electric Induction Cooktop
- » Designer Tile Backsplash
- » 1.9 cu. ft. Stainless Steel Over-the-Range Convection Microwave Oven
- » Solid Surface Countertops
- » Pop-Up Outlets in Kitchen Countertop
- » Large Double Bowl Stainless Steel Sink with Single Handle Faucet & Pull-Down Sprayer
- » Designer Tile Backsplash
- » 12-volt Attic Fan with Cover

BEDROOM & BATHROOM

- » Denver Mattress® King Size Bed with Tilt-A-View® Inclining Bed Mechanism
- » Bedspread with Throw Pillows
- » USB Charging Ports in Nightstands
- » Foot Flush Porcelain Toilet
- » Macerator Toilet (3901 & 4000)

- » Oversized Full Height Shower with Glass Door
- » Second Full Height Shower and Tub with Glass Door (4000)
- » 12-volt Attic Fan with Cover in Bathroom

ENTERTAINMENT

- » 49" LED HDTV in Living Area (3401 & 4000)
- » 43" LED HDTV in Living Area (3601)
- » 43" LED HDTV & 55" LED HDTV in Living Area (3901)
- » 32" LED HDTV in Cockpit Overhead (3401, 3601 & 4000)
- » JBL® Sound Bar with Bluetooth®
- » Sony® Blu-Ray Player in Living Area & Bedroom
- » 32" LED HDTV in Bedroom
- » Two (2) 15" LED TV/DVD Combo in Bunk Bed Area (4000)
- » Exterior 39" LED HDTV on Manual Swivel and Sound Bar with Bluetooth®
- » Cable TV & HDMI Video Ready
- » Winegard® Connect 4G/WiFi System

ELECTRICAL & PLUMBING

- » Cummins Onan® RV QD 8000 Diesel Generator
- » Automatic Generator Start
- » 50-amp Shoreline Power Cord

- » 2000-watt Inverter/100-amp Converter
- » Dual 15,000 BTU Mid-Profile Ducted Air Conditioners with Heat Pumps
- » Energy Management System
- » Multiplex Wiring Control System with 7" Screen & App Control
- » 100-watt Solar Charging System with Power Controller
- » Four (4) Auxiliary House Batteries
- » Battery Disconnect Switch
- » Exterior GFCI Recept
- » 10-gallon DSI Gas/Electric Water Heater
- » Water Heater Bypass System
- » Enclosed & Heated Holding Tanks
- » E-Z Flow Water Panel with Whole-House Water Filtration
- » Black Tank Flush System
- » 360° Siphon RV Holding Tank Vent Cap
- » Outside Shower
- » Stackable Washer & Dryer

For a complete listing of available features, visit thormotorcoach.com/aria.





IMPORTANT—PLEASE READ: This brochure reflects product design, fabrication, material, components and specifications at the date of printing, which date is disclosed below. Please visit us online at ThorMotorCoach.com or consult with your selling dealership for the latest in standards, options, specification and technical information. Photographs in the brochure may depict optional equipment or may only be available in certain floor plans. Components, appliances and the chassis may have been manufactured in a calendar year before the vehicle's designated model year. All capacities are approximate. The actual length of the vehicle may differ from that indicated in the brochure due to variances in the manufacturing processes and/or installed components. All dry weights are based on standard model features and do not include optional features or equipment. Component part and appliance manufacturers issue limited warranties covering portions of the vehicle not covered under the limited warranty we issue. Copyright Thor Motor Coach, Inc. © MY 08/15/18



thormotorcoach.com/aria
P.O. Box 1486, Elkhart, IN 46515 Sales Department: 800.860.5658 Customer Service: 877.855.2867