

2019 | BOUNDER

CLASS A GAS



LASTING DEPENDABILITY | FAMILY FAVORITE | FEATURE PACKED



www.fleetwoodrv.com



BOUNDER 36F
Shown in Sherwood

ADVENTURE WITHOUT BOUNDARIES

With the 2019 Fleetwood Bounder, it's easy to fully enjoy your family time with a comfortable place to stay and everything you need on hand. That's because this Class A Gas motorhome is designed with all your necessities onboard, like a Hide-A-Loft™ drop-down queen bed, Illumaplex® electronics house control system, and a full list of satisfying features to make you feel right at home. For 2019, you'll find modern interiors, from the wall art to the cabinetry, as well as contemporary exterior paint colors and increased chassis sizes. It's no wonder Bounder continues to be one of America's best-selling Class A Gas motorhomes.



YOU WANT EVERY SINGLE ADVANTAGE WHEN IT COMES TO YOUR RV.

At REV, we don't settle for anything less than the best, and neither should you. That's why every Fleetwood RV motorhome features industry-leading materials and construction. With these REV brands, you'll also find the ultimate in RV convenience and strength, like our auto hydraulic leveling system, Vacu-Bond™ construction, Dryseal™ edge coating, and much more – all coming standard to elevate your travels.

Each of these advantages have been engineered to deliver superior reliability, durability, and most of all, customer satisfaction.

1. Power Platform™ (Gas Motorhomes)

Designed to deliver the best in storage, strength, balance and control, the exclusive Power Platform provides a significant enhancement to the Ford® drivetrain. The Power Platform allows for each floorplan in the Bounder to have the most pass through storage bays, the highest tank capacities and the largest slide rooms.

2. Auto Hydraulic Leveling System

More reliable than electric leveling jacks, our automatic hydraulic leveling system is reliable, durable and easy to use. The operating procedure is clean and easy, the results are smooth, simple leveling at the push of a button.

3. Powerlock System™ (Interlocking Floors, Walls, and Ceiling)

REV's interlocking aluminum extrusion wall-joint system integrates floor, sidewall, and roof assembly into one locked-together overall structure for long-term performance and durability.

4. Powerframe System™ (Precision-Welded Aluminum Walls, Floor, and Roof Structures)

Our wall, floor, and roof frames are designed and engineered to fit precisely with interlocking extrusions on the steel-reinforced bridge structure. No "hammer-it-to-fit" stick and frame construction here.

5. Vacu-Bond™ Construction

Vacuum-bonded assemblies combine industry-leading materials and construction for a straight and flat integrated wall that's better suited to the rigors of the road. It applies up to 415,000-pounds of vacuum pressure to our already strong welded-aluminum sidewall frame, bead-foam panel insulation, Tuff-Coat fiberglass skin, and inner wall materials for over 30 minutes – far exceeding industry standards.

6. Solid Bead-Foam Engineered Fit Insulation™

In some RVs, you may find air holes in the insulation. Not in a REV RV. Using exact measurements, bead-foam is placed between every structural support to eliminate any gaps and provide insulation from both exterior temperature and noise.



Five Layer Wall

Our Vacu-Bond™ walls feature an adhesive bonding process that applies up to 415,000-pounds of vacuum pressure to the welded-aluminum sidewall frame, bead-foam panel insulation, and Tuff-Coat fiberglass skin for more than 30 minutes – far exceeding industry standards.



Weld Joint

Every joint found in the frame of your Fleetwood motorhome has been welded by a certified welder to add strength to the frame, unlike the stick and nail construction found on other RVs.



Ceiling Interlock

You won't find stick and frame construction here. Our exclusive extruded aluminum allows the ceiling to "lock" with the wall structure, creating one solid aluminum assembly.

12. Seamless Metallic Slide Room Underbelly

What's underneath is just as important as what's on top. Our metallic slide bottom goes above the standard wood bottom for protection against the elements, and adds yet another level of durability.

13. Roto-Cast Molded Luggage Bays

Instead of the industry-standard plywood, these molded bays are more durable, look great, and can be washed with a hose.

14. Dedicated Full-Length Metallic A/C Ducting

Instead of cut-out foam channels, REV provides insulated A/C ducting that runs the entire length of your motorhome with carefully placed outlets in the most occupied places to assure cool comfort.

15. Sure-Glide Flush Floor Aluminum Slide Transition Ramp

Pinewood ramps that absorb moisture, crack and rot are the industry standard. Not here! Our aluminum ramps will stay straight, extend and retract easily, and will provide you with years of trouble-free operation.

16. Automotive Inspired Bonded Windshield

REV RV's bonded windshields surpass the standard "floating" windshield in durability. The entire perimeter of glass is bonded to a frame that provides more support and is much more conducive to the demands of the road.

17. Bus-Style Cargo Doors

We far exceed the industry standards of exposed seals and hinges with a more durable design taken from our luxury motorcoaches.

18. Premium Full-Body Paint

Just like the cars, trucks, motorcycles and most any other automotive product produced today, our motorhomes receive the same premium painted protection on the exterior. Unlike the cars of today, our motorhomes are typically more than just one color. The REV RV family of painted motorhomes receive up to four different colors and as many as two separate coats of clear. Our REV RV family of Class A motorhomes are painted and clear coat protected in a state-of-the-art facility located right on the REV manufacturing campus. The results are easy to see....Better protection, better looks, and higher resale value after years of enjoyment.

19. Radiused and Cambered Entry Door

The industry standard square corner door allows for too much wind noise. So, we use a higher-end solution that fits your motor coach's body better, latches more securely, and seals tighter.

20. Hide-A-Loft™ Overhead Bed System

A REV RV exclusive, our Hide-A-Loft™ Bed System offers a capacity of up to 500 lbs. The bed includes a queen mattress and is incredibly comfortable and easy to operate.

21. Dealer Partnership

REV's dealer relationship goes beyond the expected. We listen to our dealers and are able to provide you with a motorhome you can be proud to own and that fits your needs. This partnership allows the dealer to be a bridge between the customer and REV Group.



Build your own Bounder at
<https://www.fleetwoodrv.com/build-your-own>



BOUNDER 36F
Shown in Atlantic



It's about embracing the adventurous side of life – celebrating all the fun, creative ways you can enjoy free time with family and friends. A Bounder has a wide range of easy-to-use features that ensure comfort, relaxation, and most of all, livability.

BOUNDER 36F
Shown in Sherwood

FLEETWOOD RV
www.fleetwoodrv.com





Boundless beauty on the inside and out of a Bounder. The Bounder is again setting new standards with engaging layouts, well-thought-out amenities, and unprecedented comfort.

5

6

BOUNDER 36F
Shown in Spiced Mocha decor
with Nottingham Cherry cabinetry



BOUNDER 36F
Shown in Spiced Mocha decor
with Nottingham Cherry cabinetry





TOP SELLING FEATURES

- #1 selling motorhome of all-time
- Full scale luxury Gas Class A motorhome
- Five awesome floorplans to suit all requirements
- Illumaplex electronics house control system
- All new interior & exterior enhancements
- Automotive inspired cockpit with dual monitors
- Energy Management System
- Hide-A-Loft™ drop down queen bed (500lb capacity)



FLOORPLANS

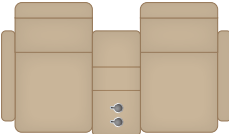
AVAILABLE OPTIONS



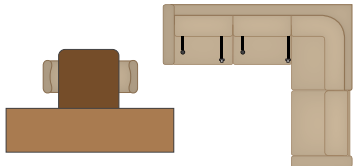
OPT. 113 RANGE
THREE BURNER DROP-IN
(33C, 35K, 35P, 36F, 37FP)



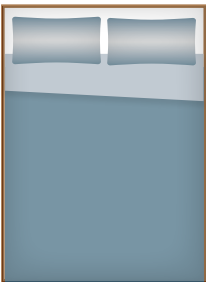
OPT. 126 WASHER/DRYER
(34C, 35K, 36F)



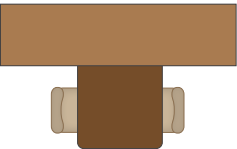
OPT. 194 THEATRE SEATING
(34C, 35K, 36F, 36FP)



OPT. 208 L-SOFA & FREE
STANDING DINETTE w/CREDENZA
(35P)



OPT. 220 HIDE-A-LOFT™ DROP
DOWN QUEEN BED
(33C, 35K, 35P, 36F, 37FP)

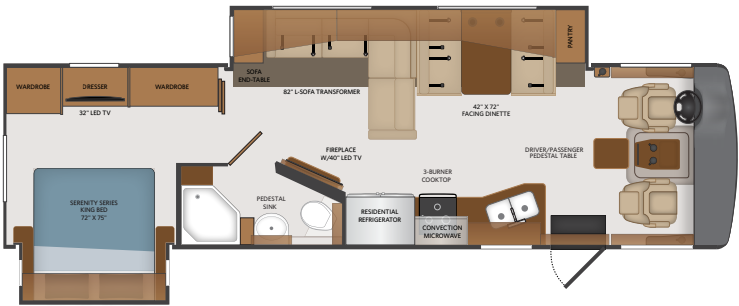


OPT. 833 FREE STANDING
DINETTE w/CREDENZA
(33C, 35K, 35P)

099	SATELLITE DELETE
113	RANGE - THREE BURNER DROP-IN
126	WASHER/DRYER (33C, 35K, 36F)
147	PREMIUM STEREO UPGRADE
194	THEATRE SEATING (34C, 35K, 36F, 36FP)
208	L-SOFA & FREE STANDING DINETTE w/CREDENZA (35P)
220	HIDE-A-LOFT™ DROP DOWN QUEEN BED
435	CSA-PKG FORD®
447	CSA FORD® INSTRUMENT PANEL
563	TECHNOLOGY PACKAGE
671	POWER CORD REEL
833	FREE STANDING DINETTE w/CREDENZA (33C, 35K, 35P)

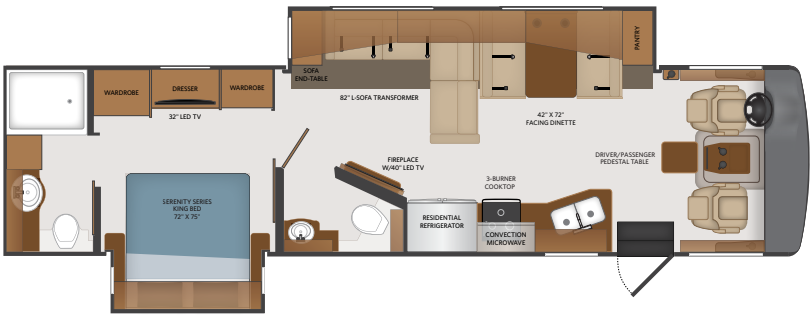
33C

Options: 099, 113, 126, 147, 194, 220, 435, 447, 563, 671, 833



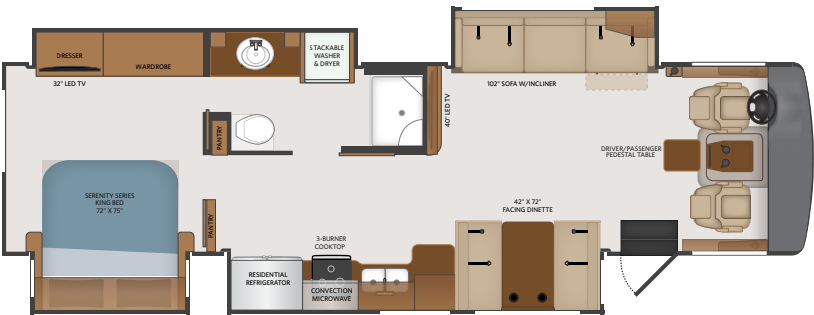
35K

Options: 099, 113, 126, 147, 194, 220, 435, 447, 563, 671, 833



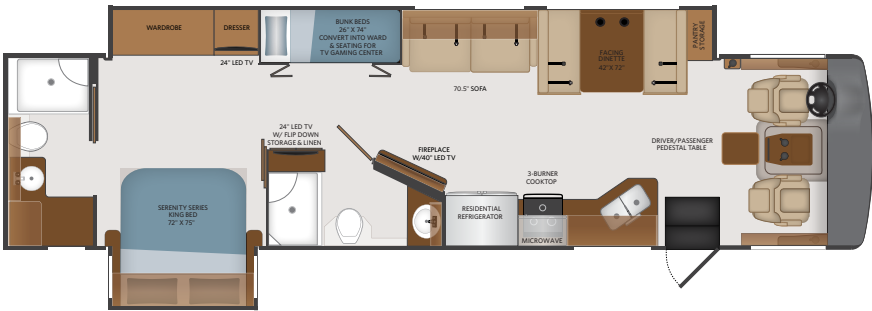
35P

Options: 099, 113, 126, 147, 208, 220, 435, 447, 563, 671, 833



36F

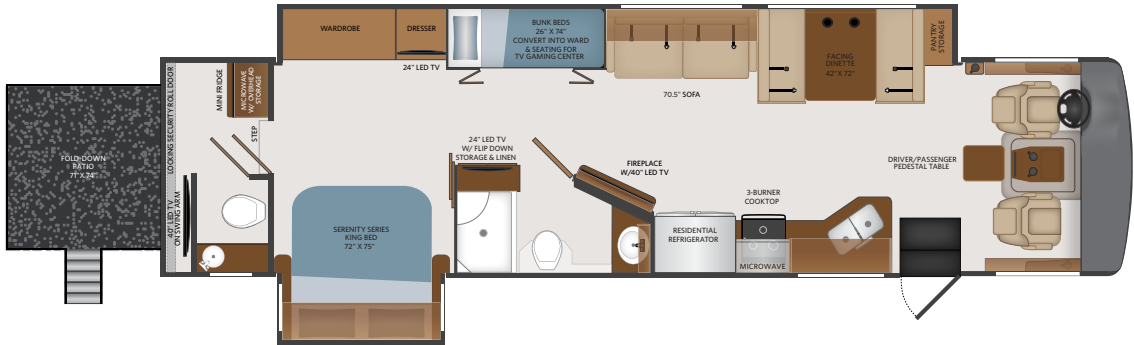
Options: 099, 113, 126, 147, 194, 220, 435, 447, 563, 671



36FP

Options: 099, 113, 147, 194, 220, 435, 447, 563, 671

Extend your living space with the all-new Extended Living Edition floorplan. The snap-in patio system features a powder coat finish, a protective roll-down door, and sturdy, adjustable MORryde patio steps that snap firmly into place and adjust to difficult terrain. Each of these elements have been designed to give travelers an extended living space that's as easy to setup as 1-2-3.



CHASSIS

MODEL	33C	35K	35P	36F	36FP
Wheelbase (inches)	208"	228"	252"	242"	242"
Front GAWR (lbs) ²	8,000	8,000	9,000	9,000	9,000
Rear GAWR (lbs) ³	15,000	15,000	15,500	15,500	17,500
GCWR (lbs) ³	26,000	26,000	30,000	30,000	30,000
GVWR (lbs) ³	22,000	22,000	24,000	24,000	26,000
Hitch Rating Weight (lbs) [†]	5,000	5,000	5,000	8,000	8,000
Tongue Weight (lbs) [*]	500	500	500	800	800
Fuel Capacity (gal)	80	80	80	80	80

DIMENSIONS AND CAPACITIES

MODEL	33C	35K	35P	36F	36FP
Overall Length (inches) ⁴	34' 3"	36' 3"	36' 3"	38' 9"	39' 1"
Overall Height (with A/C)	12' 10"	12' 10"	12' 10"	12' 10"	12' 10"
Overall Width (maximum) ^{5,6}	102"	102"	102"	102"	102"
Interior Height (maximum)	84"	84"	84"	84"	84"
Interior Width (maximum)	96"	96"	96"	96"	96"
Patio Awning Width (feet & inches)	18'	18'	15'	18'	18'
Interior Storage (cu. ft.)	123	126	144	171	171
Exterior Storage (cu. ft.)	160	180	138	170	170
Fresh Water Holding Tank (gal)	100	100	100	100	100
Grey Water Holding Tank (gal)	58	58	46	90	90
Black Water Holding Tank (gal)	42	42	30	50	50
Appliance Propane Tank (gal)	25	25	25	25	25
Water Heater Tank (gal)	10	10	10	NA	NA

FORD® CHASSIS

Model: FORD®
Engine: 6.8L Triton V10
Transmission: Ford® 6-Speed, Automatic w/Overdrive

Alternator: 175 Amp
Torque: 460 lb.-ft. @ 3,000 RPM
Horsepower: 320 HP @ 3,900 RPM

EXTERIOR CHOICES



ATLANTIC



SHERWOOD



TWILIGHT

INTERIOR DECOR CHOICES

SPICED MOCHA



STERLING SLATE



- 1
- SOFA
- 2
- LIVING ACCENT
- 3
- BEDSPREAD
- 4
- COUNTERTOP
- 5
- FLOORING
- 6
- CARPET

DESIGNER RECOMMENDS THE FOLLOWING INTERIOR AND EXTERIOR COMBINATIONS

Sterling Slate Décor	+	Greystone Cabinetry	+	Atlantic Graphics
Spice Mocha Décor	+	Cappuccino Cabinetry	+	Sherwood Graphics
Spice Mocha Décor	+	Nottingham Cabinetry	+	Twilight Graphics

	33C	35K	35P	36F	36FP	
EXTERIOR	Aerodynamic Fiberglass Cap w/Automotive Headlighting	S	S	S	S	S
	Rear Fiberglass Cap w/Automotive Lighting	S	S	S	S	S
	ABS Wheel Well Skirts	S	S	S	S	S
	TPO Roof - Thermoplastic Polyolefin	S	S	S	S	S
	Legless Electric Patio Awning w/LED lighting and Wind Sensor Retract	S	S	S	S	S
	Slideout Awning Toppers	S	S	S	S	S
	Radiused Entry Door w/Screendoor, Latch, Deadbolt Lock	S	S	S	S	S
	Black Luggage Door Handles	S	S	S	S	S
	Entry Grab Handle - Acrylic Lighted	S	S	S	S	S
	Exterior Power Entry Step w/Light	S	S	S	S	S
	Side Swing Aluminum Bus-Style Luggage Doors	S	S	S	S	S
	Dual Pane Frameless Windows	S	S	S	S	S
	LED Patio Light	S	S	S	S	S
	Front, Side and Rear Clearance & Marker Lighting	S	S	S	S	S
	Auto Gen Start	S	S	S	S	S
	Gravity Fresh Water Fill	S	S	S	S	S
	Exterior Service Station - Water Pump Switch, Exterior Shower, Black Tank Flush, City Water Hookup & Drainage Valves	S	S	S	S	S
	Exterior Park Cable & Satellite Hookup	S	S	S	S	S
	Trialer Hitch w/Seven-Way Round Tow Connection (lbs.)	5,000	5,000	5,000	8,000	8,000
	TV Antenna - Unidirectional King Controls Jack Antenna	S	S	S	S	S
	Exterior LP Connection	S	S	S	S	S
	Four Point Fully Automatic Hydraulic Leveling Jacks	S	S	S	S	S
	Rear Ladder	S	S	S	S	S
	Four-Color Premier Full Body Paint w/Front Clear Mask	S	S	S	S	S
	Roof Vent Rain Covers	S	S	S	S	S
	Auto-Locating Stationary Satellite System w/Dish Receiver(s) - King	S	S	S	S	S
	Satellite Delete	O	O	O	O	O
	Automotive One-Piece Windshield	S	S	S	S	S
	Daytime Running Lights	S	S	S	S	S
	Tinted Slider Driver/Passenger Windows	S	S	S	S	S
	Automotive Windshield Wiper System	S	S	S	S	S
	Remote Power/Heated Mirrors w/ Turn Signals & Side Cameras - Black	S	S	S	S	S
Driver Chair w/Reclining Back, Swivel & Six-way Power Controls	S	S	S	S	S	
Passenger Chair w/Manual Footrest, Reclining Back & Swivel	S	S	S	S	S	
Driver/Passenger ABS Style Armrests	S	S	S	S	S	
Driver/Passenger Cupholders	S	S	S	S	S	
Windshield Power Roller Shade	S	S	S	S	S	
Driver/Passenger Window Manual Roller Shades	S	S	S	S	S	
Driver/Passenger Overhead Map Lighting	S	S	S	S	S	
Black Instrument Gauges w/Electronic Information Center	S	S	S	S	S	
High Output Dash Air Conditioning/Heat	S	S	S	S	S	
Electronic Cruise Control	S	S	S	S	S	
Windshield Wipers w/Delay	S	S	S	S	S	
Remote Switch Power/Heated Mirrors	S	S	S	S	S	
Steering Wheel w/Tilt Column	S	S	S	S	S	
Color Monitor for Side & Rear Cameras 6"	S	S	S	S	S	
INTERIOR	Pioneer Touch Screen Radio 6.2" w/AM/ FM/CD/DVD/Bluetooth/MP3/USB - Remote Control - Phone Control - Siri Eyes Free - Navigation Ready - Sirius/XM Ready (Requires Subscription)	S	S	S	S	S
	Kenwood Motorized Tilt Touch Screen Radio 6.95" w/AM/FM/CD/DVD/Bluetooth/ MP3/USB - Remote Control - Phone Control - Siri Eyes Free - Android Auto & Apple Car Play w/Navigation - Android Rapid Charge - Built in HD Radio - Wireless Music Browsing - Pandora - Spotify - Sirius/XM Ready (Requires Subscription)	O	O	O	O	O
	Sirius/XM Satellite Radio Ready (Requires Subscription)	S	S	S	S	S
KITCHEN	USB and Auxiliary Inputs	S	S	S	S	S
	Seat Belts - Three Point Driver & Passenger w/Adjustable Straps	S	S	S	S	S
	12V Accessory Ports	S	S	S	S	S
	110-Volt AC Outlets	S	S	S	S	S
	Automotive Style Dash w/Dual Monitors & Workstation	S	S	S	S	S
	Center Dash Pullout Storage Bin	S	S	S	S	S
	Cab Lights	S	S	S	S	S
	Generator On/Off Switch	S	S	S	S	S
	Battery Booster Switch	S	S	S	S	S
	Fiberglass Engine Cover w/Snack Tray	S	S	S	S	S
BATHROOM	Front Cab Floor Mats	S	S	S	S	S
	Front Cab Fans	S	S	S	S	S
	Auto Leveling Jacks Controls	S	S	S	S	S
	Driver/Passenger Center Table	S	S	S	S	S
	Aux Start Switch	S	S	S	S	S
	Hide-A-Loft Drop Down Queen Bed w/24" TV	O	O	O	O	O
	Sofa - Expandable L-Sofa	S	S	NA	NA	NA
	Sofa - Tri-fold	NA	NA	NA	S	S
	Sofa - Tri-fold w/Incliner & Facing Booth Dinette w/Dream Dinette	NA	NA	S	NA	NA
	Sofa - Expandable L-Sofa & Free-Standing Dinette w/Credenza	NA	NA	O	NA	NA
ENTERTAINMENT	Sofa - Theater Seating	O	O	NA	O	O
	Facing Booth Dinette w/Dream Dinette Table	S	S	S	S	S
	Free Standing Dinette w/Credenza	O	O	O	NA	NA
	Solid Surface Galley Top	S	S	S	S	S
	Surf-X Tops Throughout (Excluding Galley)	S	S	S	S	S
	Electric Fireplace	S	S	NA	S	S
	Interior Flat Soft Touch Vinyl Ceiling	S	S	S	S	S
	Vinyl Tile Flooring	S	S	S	S	S
	Ozite Lined Cabinet Interiors	S	S	S	S	S
	Cedar-Lined Wardrobe Interiors (Select Locations)	S	S	S	S	S
ELECTRIC & UTILITIES	Full-extension Drawer Guides w/Latches	S	S	S	S	S
	Hidden Euro Hinges & Struts	S	S	S	S	S
	Solid Wood Raised Panel Cabinet Doors	S	S	S	S	S
	Solid Wood Ceiling Treatment	S	S	S	S	S
	Slideout Fascia - Interior Wood Color	S	S	S	S	S
	Window Valances w/Lambrequins & Wood Accents	S	S	S	S	S
	Manual Day/Night Roller Shades	S	S	S	S	S
	Energy Efficient 3" LED Flush Mount Ceiling and Under Cabinet Reading Lights Throughout	S	S	S	S	S
	Flush Floor Living Slideouts	S	S	S	NA	NA
	Brushed Nickle Faucets/Fixtures/Hardware	S	S	S	S	S
BEDROOM	Battery Disconnect	S	S	S	S	S
	Interior Entry Grab Handle - Metal	S	S	S	S	S
	Multiplex Electric Controls w/App Control	S	S	S	S	S
	Entry Door Manual Roller Shade	S	S	S	S	S
	Solid Surface Entry Step w/Lighted Stepwell	S	S	S	S	S
	Residential Refrigerator - SS French Door Style w/Icemaker - Samsung	S	S	S	S	S
	Three-Burner Cooktop w/Solid Surface Covers	S	S	S	S	S
	Three-Burner Drop-In Range w/Oven	O	O	O	O	O
	SS Over-the-Range Convection Microwave	S	S	S	S	S
	Tile Backsplash	S	S	S	S	S
BATHROOM	Deep Double Bowl Undermount Stainless Steel Sink	NA	S	NA	NA	NA
	Top-mounted Stainless Steel Sink	NA	S	S	S	S
	Pedestal Porcelain Sink	S	NA	NA	NA	NA
	Single Handle Residential Faucet	S	S	S	S	S
	Medicine Cabinet w/Mirror	S	S	S	S	S
	Fiberglass Shower Surround	S	S	S	S	S
	Glass Shower Door	S	S	S	S	S
	Shower Skylight	S	S	S	S	S
	Metal Showerhead w/Sliding Adjustable Bar, Soap Dish & Matching Single Valve Faucet	S	S	S	S	S
	Porcelain Standard Toilet	NA	NA	S	NA	NA
BATHROOM	Top-mounted Porcelain Sink	NA	NA	S	NA	NA
	Power Ceiling Vent - Fantastic	S	S	S	S	S
	40" Flat Screen LED TV (Living Area)	S	S	S	S	S
	32" Flat Screen LED TV (Bedroom)	S	S	S	NA	NA
	24" Flat Screen LED TV (Bedroom)	NA	NA	NA	S	S
	24" Flat Screen LED TV (Bunk Area)	NA	NA	NA	S	S
	24" Flat Screen LED TV (Overhead w/ Hide-A-Loft Drop Down Bed Option)	O	O	O	O	O
	HDMI Video Distribution	S	S	S	S	S
	Sound Bar w/Blu-Ray Player	S	S	S	S	S
	Exterior Entertainment Center w/40" LED TV, AM/FM/CD/DVD/Bluetooth & Two Speakers	S	S	S	S	S
BATHROOM	Technology Package: Bluetooth® Speaker Exterior Porch Light, Wifi Extender, Cell Booster, 160W Solar Panel, Upgraded Kenwood® Radio, Kenwood Collision Avoidance Camera	O	O	O	O	O
	Dual-Roof Mount Ducted 15,000-BTU A/C Units w/Chill Grill and Rear Heat Pump	S	S	S	S	S
	34,000 BTU Furnace	S	S	S	NA	NA
	30,000/20,000 BTU Furnace	NA	NA	NA	S	S
	Service: 50-amp	S	S	S	S	S
	Converter: 60 AMP Power Converter	S	S	S	S	S
	Inverter: Single 2000w Pure Sine	S	S	S	S	S
	Solar Prep	S	S	S	S	S
	Multiplex Wiring Control System w/App Control	S	S	S	S	S
	6V Aux Batteries (4)	S	S	S	S	S
BATHROOM	Neutral Loss Protection	S	S	S	S	S
	Generator: 5.5kW Onan	S	S	S	S	S
	Auto Gen Start	S	S	S	S	S
	Master Battery Disconnect Switch	S	S	S	S	S
	Water Pump: 12V 3GPM High Capacity Shurflo Water Pump	S	S	S	NA	NA
	Water Pump: 12V 5.3GPM High Capacity AquaJet Water Pump	NA	NA	NA	S	S
	Water Purification System	S	S	S	S	S
	Water Heater Bypass System	S	S	S	S	S
	Exterior Shower	S	S	S	S	S
	Cable TV/Satellite Hookup	S	S	S	S	S
BATHROOM	Black Holding Tank Flush System - San-T-Flush	S	S	S	S	S
	Single Location Monitor panel w/LPG, Touch Sensor Tank Monitoring & Battery Readouts	S	S	S	S	S
	Fire Extinguisher, LP/CO & Smoke Detectors	S	S	S	S	S
	Exterior GFCI Receptacle in Exterior Storage	S	S	S	S	S
	Combo Washer/Dryer	O	O	NA	O	NA
	Stackable Washer/Dryer	NA	NA	S	S	NA
	10-Gallon Water Heater	S	S	S	NA	NA
	Tankless Water Heater	NA	NA	NA	S	S
	Combo Washer/Dryer Prep	S	S	NA	S	NA
	50-amp Shoreline Power Cord	S	S	S	S	S

**CSA standards may require substitution or deletion to achieve conformance

Product information, photography and illustrations included in this publication were as accurate as possible at the time of printing.

BOUNDER STANDARD FEATURES AND OPTIONS

RV OWNERCARE

Limited one-year/15,000-mile coach warranty and three-year/45,000-mile structural warranty, whichever occurs first, and it is fully transferable for the first 12 months. RV OWNERCARE is one of the RV industry's most comprehensive programs and includes systems, appliances, components and construction, with no deductible and no service charge.

Chassis Warranty provided by Ford®

YOUR LOCAL DEALER



OUR VERY OWN FLEETWOOD RV MOTORHOME SERVICE CENTERS

At Fleetwood RV, we strive to deliver peace-of-mind at every turn. Our devotion to customer service starts with our trusted dealer network and spans to our own staff of motorhome service professionals at REV Recreation Group's regional technical centers. The motorhome service centers are strategically located throughout the United States to provide you convenient service wherever the road takes you.

Below, you'll find the closest motorhome service center, as well as a list of the other centers. Please visit www.fleetwoodrv.com/motorhome-service-centers to schedule a Service Appointment.

East Coast REV Technical Center
800-509-3417

West Coast REV Technical Center
877-466-6226

ROADSIDE ASSISTANCE. ANYWHERE. ANYTIME.



24/7 CUSTOMER SUPPORT FOR:

- FUEL
- BATTERY
- LOCKSMITH
- TOWING
- SLIDE-OUT ISSUES
- AND MUCH MORE!

1-855-268-0414

REV GROUP

Fleetwood RV is part of REV Recreation Group, a division of REV Group, Inc., a family of 33 industry-leading motor vehicle brands. At REV Group, we innovate, design and build products that connect and protect thousands of people every day—our trusted vehicles are engineered with the utmost rigor and precision to deliver the highest levels of performance, reliability, durability and safety.

DISCLAIMERS

1. GVWR (Gross Vehicle Weight Rating) is the maximum permissible weight of this fully loaded motor home. The GVWR is equal to or greater than the sum of the (UVW) unloaded vehicle weight plus the (OCCC) occupant cargo-carrying capacity.

2. GAWR (Gross Axle Weight Rating) is the maximum permissible loaded weight a specific axle is designed to carry.

3. GCWR (Gross Combined Weight Rating) is the value specified by the motor home manufacturer as the maximum allowable loaded weight of this motor home with its towed vehicle. Towing and braking capacities may be different. Refer to Fleetwood and chassis manufacturer's manuals for complete information.

4. Length measured from front bumper to rear bumper (excludes accessories).

5. Excludes safety equipment and awnings.

6. Motor homes feature a body width over 96" which will restrict your access to certain roads. Before purchasing, you should research any state and/or province road laws which may affect your usage.

7. Tank manufacturer's listed water capacity (WC). Actual propane capacity is 80% of water listing as required by the safety code.

† The chassis manufacturer recommends the installation of a supplemental brake control system to activate the brakes on the vehicle or trailer you are towing. Hitch receiver ratings expressed are maximum for the hitch receiver installed and may require the purchase of additional equipment that is dependent on the weight of the towed load. Consult with hitch receiver manufacturer for further information.

* UVW and OCCC are found on the label containing the federal certification tag in each RV.

** Seatbelts and locations are shown in the brochure for display purposes only. Actual numbers and locations will vary by model.

*** All 2019 REV Recreation Group motorhomes include a limited one year/15,000-mile coach warranty and three-year/45,000-mile structural warranty, whichever occurs first, and is fully transferable for the first 12 months.

FLEETWOOD MOTORHOME ASSOCIATION

As a Fleetwood RV owner, you're invited to become a member of the Fleetwood Motorhome Association (FMA). Becoming a member is the perfect way to meet other Fleetwood owners who love to travel across America and share in the RV lifestyle. Visit the FMA website at www.fma4fun.org to learn more and join the fun.

CONTACT US

To locate a dealer near you, visit our website at www.fleetwoodrv.com or call 1-800-322-8216. We can also be contacted at Fleetwood RV Customer Relations, P.O. Box 1007, Decatur, IN 46733.

IMPORTANT—PLEASE READ: Product information, photography and illustrations included in this publication were as accurate as possible at the time of printing. For further product information and changes, please visit our website at www.fleetwoodrv.com or contact your local Fleetwood RV dealer. Prices, materials, design and specifications are subject to change without notice. All weights, fuel, liquid capacities and dimensions are approximate. Fleetwood RV has designed its recreational vehicles to provide a variety of uses for its customers. Each vehicle features optimal seating, sleeping, storage and fluid capacities. The user is responsible for selecting the proper combination of loads (i.e., occupants, equipment, fluids, cargo, etc.) to ensure that the vehicle's capacities are not exceeded.

www.fleetwoodrv.com

©2018 REV Group, Inc. Printed in the USA. 10/18. Model Year 2019, First Edition.