

NAVIGATOR

2019 CLASS A DIESEL



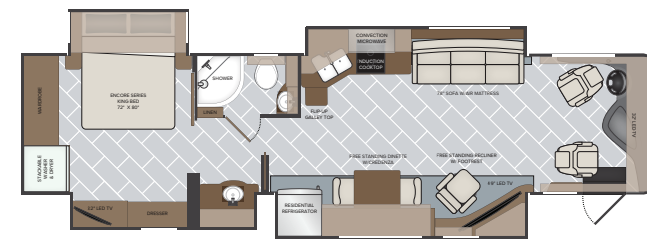
HOLIDAY RAMBLER®

holidayrambler.com

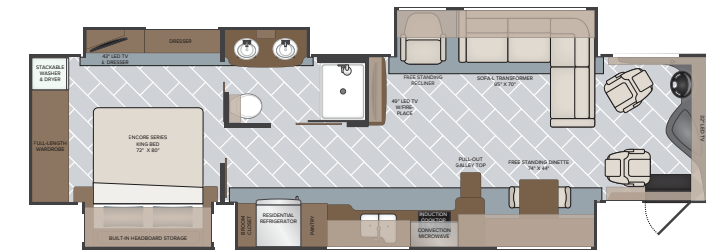


Navigator 38K
REGAL GRAPHICS

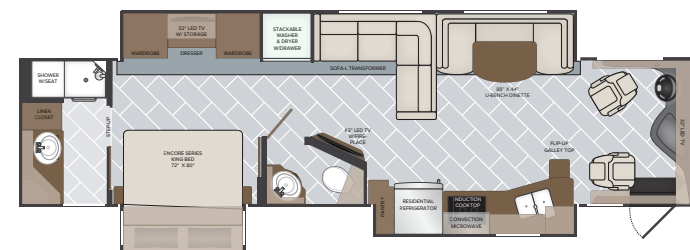
NAVIGATOR FLOORPLANS



37R | OPTIONS:
099, 191, 194, 217, 237, 436, 563, 830



38F | OPTIONS:
099, 203, 217, 237, 436, 563, 830



38K | OPTIONS:
099, 194, 217, 237, 436, 563, 833

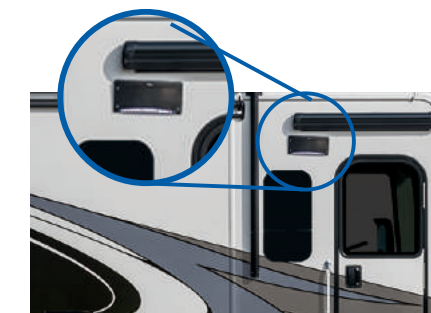


38N | OPTIONS:
099, 194, 217, 237, 436, 563, 809, 833

TECHNOLOGY PACKAGE Includes: Bluetooth® Speaker, Porch Light, Wifi Extender, Cell Booster, 160W Solar Panel, Collision Avoidance



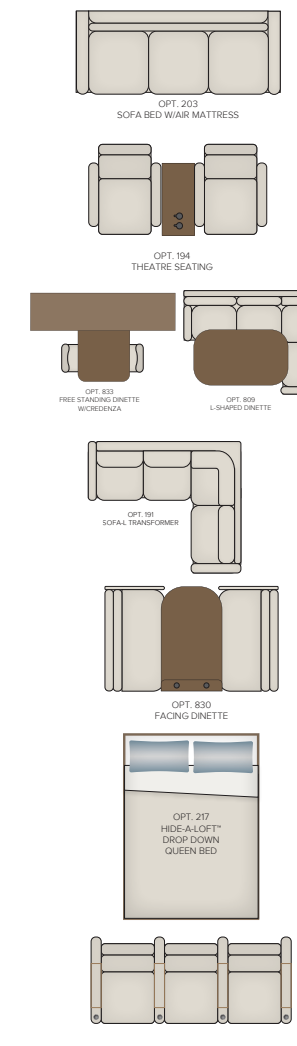
Mobile Eye



Bluetooth Speaker Porch Light



160W Solar Panel



- AVAILABLE OPTIONS**
- 099 | Satellite Delete
 - 191 | Expandable L-Sofa
 - 194 | Theatre Seating
 - 203 | Sofa Bed w/Air Mattress
 - 217 | Hide-A-Loft™ Drop Down Queen Bed
 - 237 | Third Roof A/C
 - 436 | CSA-Freightliner Package
 - 563 | Technology Package
 - 809 | L-Shaped Dinette
 - 830 | Facing Dinette
 - 833 | Free Standing Dinette w/Credenza

A Navigator should be reliable, accommodating, and most of all, ready for anything. Lucky for you, the all-new 2019 Navigator is a Class A Diesel constructed for the ultimate road trip experience. Featuring a Magnadyne M-10 10" touch screen stereo with navigation, you'll always be sure of your next turn, and the Power Bridge Chassis® with 21K V-Ride ensures you have dependability when on the path less traveled.

A mid-level option for Ramblers everywhere, the Navigator is perfect for pack-up-and-go vacations thanks to its long list of functional features, like a 100-gallon fuel tank, impressive pass-thru storage, and on-demand water heater. No longer will you worry about whether you have this or that, because when you get the 2019 Navigator, you'll have everything you need.



HOLIDAY RAMBLER

Built
for Every
New Direction



Navigator 38K
CITYSCAPE INTERIOR WITH
DARK CHERRY HIGH-GLOSS CABINETRY

Navigator 38K
CITYSCAPE INTERIOR WITH
DARK CHERRY HIGH-GLOSS CABINETS



Visit our website for more interior photos and to build your 2019 Navigator at holidayrambler.com.



You want every single advantage when it come to your RV. So, just to be safe we're giving you 21.

Each of these 21 advantages have been engineered to deliver superior reliability, durability, and most of all, customer satisfaction.

Riding on Confidence

At Holiday Rambler we don't settle for anything less than the best, and neither should you.

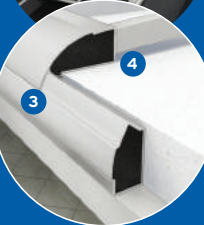
That's why every motorhome features industry-leading materials and construction. You'll also find the ultimate in RV convenience and strength, like our auto hydraulic leveling system,

Vacu-Bond™ construction, Dryseal™ edge coating, and much more — all coming standard to elevate your travels.



Ceiling Interlock

You won't find stick and frame construction here. Our exclusive extruded aluminum allows the ceiling to "lock" with the wall structure, creating one solid aluminum assembly.



Floor Interlock

To give your RV's structure a precise, seamless fit, our extruded aluminum, an exclusive feature, "locks" the wall structure and floor together to create a solid aluminum shell that maximizes overall strength.



Five Layer Wall

Our Vacu-Bond™ walls feature an adhesive bonding process that applies up to 415,000-pounds of vacuum pressure to the welded-aluminum sidewall frame, bead-foam panel insulation, and Tuff-Coat fiberglass skin for more than 30 minutes – far exceeding industry standards.



Weld Joint

Every joint found in the frame of your Fleetwood motorhome has been welded by a certified welder to add strength to the frame, unlike the stick and nail construction found on other RVs.

1. Power Bridge™ (Diesel Motorhomes)

REV's Power Bridge chassis is exclusive and provides customers with superior handling; cavernous storage, enormous holding tank capacities and a better ride. With its modern-engineers all-steel structure, the Power Bridge creates a true side-to-side, front-to-rear and belly-to-beltline bridging platform that is custom designed for each Class A Diesel floorplan. This is a vast improvement over standard rail technology, and it's the perfect pairing with the Freightliner XCM chassis.

2. Auto Hydraulic Leveling System

More reliable than electric leveling jacks, our automatic hydraulic leveling system is reliable, durable and easy to use. The operating procedure is clean and easy, the results are smooth, simple leveling at the push of a button.

3. Powerlock System™

(Interlocking Floors, Walls, and Ceiling)

REV's interlocking aluminum extrusion wall-joint system integrates floor, sidewall, and roof assembly into one locked-together overall structure for long-term performance and durability.

4. Powerframe System™

(Precision-Welded Aluminum Walls, Floor, and Roof Structures)

Our wall, floor, and roof frames are designed and engineered to fit precisely with interlocking extrusions on the steel-reinforced bridge structure. No "hammer-it-to-fit" stick and frame construction here.

5. Vacu-Bond™ Construction

Vacuum-bonded assemblies combine industry-leading materials and construction for a straight and flat integrated wall that's better suited to the rigors of the road. It applies up to 415,000-pounds of vacuum pressure to our already strong welded-aluminum sidewall frame, bead-foam panel insulation, Tuff-Coat fiberglass skin, and inner wall materials for over 30 minutes — far exceeding industry standards.

6. Solid Bead-Foam Engineered Fit Insulation™

In some RVs, you may find air holes in the insulation. Not in a REV RV. Using exact measurements, bead-foam is placed between every structural support to eliminate any gaps and provide insulation from both exterior temperature and noise.

7. Dryseal™ Edge Coating

This water-wicking coating is applied to every edge of the walls and windows for long-lasting durability. It helps to seal out moisture, prevent delamination, swelling, and mold.

8. Tuff-Coat Fiberglass Walls

REV RV seeks to use the highest quality exterior fiberglass on our Class A gas and Class A diesel products. The impressive tuff-coat fiberglass skin is extremely weather resistant and UV resistant. Most importantly, there is no wood substrate on the exterior of the REV Class A products. Delamination is a major concern for manufacturers using the composite or wood backer in their walls. Not at REV RV, our exterior skin has no composite and no wood, just the fiberglass.

9. Tuff-Ply Engineered Vinyl Roofing™

As the name implies, this "Tuff-Ply" or Thermoplastic Poly Olefin is as tough as it comes and is very low maintenance. Tuff-Ply is flexible, pliable and easily conforms with the roofline radius with little to no stress at the awning rail connection seam. Tuff-Ply is a clean, non-streaking, non-chalking engineered vinyl material that is easy to maintain.

10. Tuff-PEX™ Plumbing System

It's a complete system of flexible, yet durable, Oetiker tubing, fittings, and stainless-steel rings — all with sub-zero ratings. Colors of red for hot and blue for cold make servicing simple.

11. Tapered Slideout Box Tops

Our slideouts include a tapered roofline that directs water away from the RV to provide an additional level of moisture protection. There are also multiple bead-seals, as well as our debris awning protection.

12. Seamless Metallic Slide Room Underbelly

What's underneath is just as important as what's on top. Our metallic slide bottom goes above the standard wood bottom for protection against the elements, and adds yet another level of durability.

13. Citadel Fiberglass Luggage Liner™

On select motorhomes, the Citadel liner offers an extra barrier of protection against moisture and is also easy to clean.

14. Dedicated Full-Length Metallic A/C Ducting

Instead of cut-out foam channels, REV provides insulated A/C ducting that runs the entire length of your motorhome with carefully placed outlets in the most occupied places to assure cool comfort.

15. Sure-Glide Flush Floor Aluminum Slide

Transition Ramp Pinewood ramps that absorb moisture, crack and rot are the industry standard. Not here! Our aluminum ramps will stay straight, extend and retract easily, and will provide you with years of trouble-free operation.

16. Automotive Inspired Bonded Windshield

REV RV's bonded windshields surpass the standard "floating" windshield in durability. The entire perimeter of glass is bonded to a frame that provides more support and is much more conducive to the demands of the road.

17. Bus-Style Cargo Doors

We far exceed the industry standards of exposed seals and hinges with a more durable design taken from our luxury motorcoaches.

18. Premium Full-Body Paint

Just like the cars, trucks, motorcycles and most any other automotive product produced today, our motorhomes receive the same premium painted protection on the exterior. Unlike the cars of today, our motorhomes are typically more than just one color. The REV RV family of painted motorhomes receive up to four different colors and as many as two separate coats of clear. Our REV RV family of Class A motorhomes are painted and clear coat protected in a state-of-the-art facility located right on the REV manufacturing campus. The results are easy to see....Better protection, better looks, and higher resale value after years of enjoyment.

19. Radiused and Cambered Entry Door

The industry standard square corner door allows for too much wind noise. So, we use a higher-end solution that fits your motorcoach's body better, latches more securely, and seals tighter.

20. Hide-A-Loft™ Overhead Bed System

A REV RV exclusive, our Hide-A-Loft™ Bed System offers a capacity of up to 500 lbs. The Hide-A-Loft system includes queen mattress that is incredibly comfortable and easy to operate.

21. Dealer Partnership

REV's dealer relationship goes beyond the expected. We listen to our dealers and are able to provide you with a motorhome you can be proud to own and that fits your needs. This partnership allows the dealer to be a bridge between the customer and REV Group.



The Power Bridge Chassis™

The workhorse behind Holiday Rambler, REV diesel motorhomes, the Power Bridge delivers stellar pass-through storage, combined with large compartment openings to give you room for all your essentials. But, that's not all. The Power Bridge's suspension system offers up a truly smooth ride by absorbing road irregularities.

RV OWNERCARE

Limited one-year/15,000-mile coach warranty and three-year/45,000-mile structural warranty, whichever occurs first, and it is fully transferable for the first 12 months. RV OWNERCARE is one of the RV industry's most comprehensive programs and includes systems, appliances, components and construction, with no deductible and no service charge.

Chassis Warranty Freightliner Custom Chassis Corporation®



HOLIDAY RAMBLER

EXTERIOR CHOICES



Armstrong



Grande



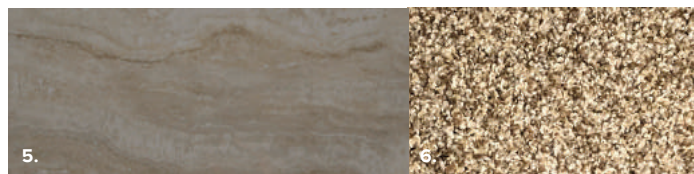
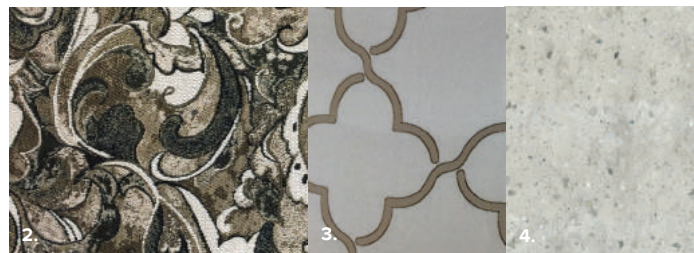
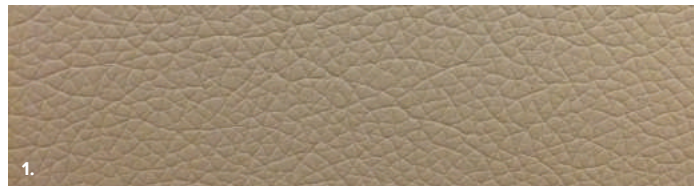
Carmen



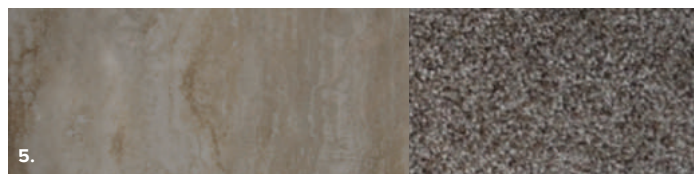
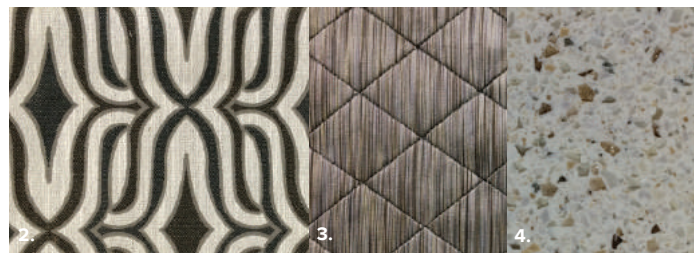
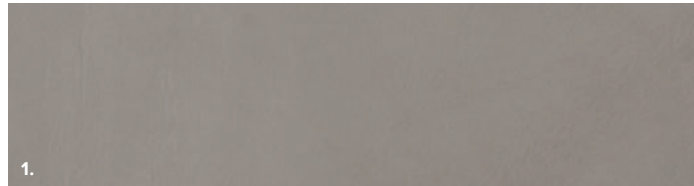
Regal

INTERIOR DECOR CHOICES

- 1. Sofa
- 2. Accent
- 3. Bedspread
- 4. Countertop
- 5. Flooring
- 6. Carpet



Vintage Sandstone



Cityscape

CABINETRY



Nutmeg High Gloss



Dark Cherry High Gloss



Whispering Wind High Gloss

Navigator

EXTERIOR	37R	38F	38K	38N
Aerodynamic Fiberglass Cap w/Automotive Headlighting	S	S	S	S
Hood Insert & Seamless Mounting	S	S	S	S
Rear Fiberglass Cap w/Fiberglass Rear Engine Access, Automotive Lighting & Grill	S	S	S	S
Fiberglass Wheel Well Trims	S	S	S	S
TPO Roof	S	S	S	S
Four-Color Premier Full Body Paint	S	S	S	S
Front Clear Protective Mask	S	S	S	S
Fixed Generator w/Hood Access	S	S	S	S
Awning - Electric Patio Awning w/LED Lighting & Wind Sensor Retract	S	S	S	S
Slideout Awning Toppers Above Slideouts	S	S	S	S
Entry Door Awning	S	S	S	S
Radius Door w/Screen Door, w/Latch, Deadbolt Lock & Frameless Window	S	S	S	S
Remote Keyless Entry Door (Key Fob)	S	S	S	S
Acrylic Grab Handle at Entry Door	S	S	S	S
Exterior Lighted Power Entry Step	S	S	S	S
Side Swing Aluminum Bus-Style Baggage Doors w/Chrome Handles	S	S	S	S
Windows - Large Dark Tinted Frameless, Dual Pane	S	S	S	S
LED Patio Lights - (Door Side, Passenger Side Over Service Bay)	S	S	S	S
Front, Side & Rear LED Clearance & Marker Lighting	S	S	S	S
Power Cord Reel	S	S	S	S
Exterior Park Cable & Satellite Hookup	S	S	S	S
Seven-Way Round Tow Connection	S	S	S	S
Rear Ladder - Brushed Aluminum Color	S	S	S	S
Underhood Utility Light	S	S	S	S
Antenna - Unidirectional King Controls Jack Antenna	S	S	S	S
Pre-wire for Solar Panel	S	S	S	S
Basement 90° Slide Tray	S	NA	S	S
King Stationary Satellite System w/ Receivers & Programming	S	S	S	S
Third A/C	O	O	O	O
Roof Vent Rain Covers	S	S	S	S
Water System Winterization Package	S	S	S	S
INTERIOR ENTRY	37R	38F	38K	38N
Power Entry Step Cover	S	S	S	S
Solid Surface Entry Step w/LED Accent Lighting	S	S	S	S
Battery Disconnect	S	S	S	S
Acrylic Grab Handle Inside Entry Door & Dash	S	S	S	S
Metal Interior Grab Handle at Entry	S	S	S	S
Entry Door Manual Roller Shades & Blinds	S	S	S	S
INTERIOR	37R	38F	38K	38N
Sofa - Comfortfit 78" Sofa w/Air Bed	S	NA	NA	NA
Sofa - Comfortfit 60" Sofa w/Large Jack-Knife	NA	NA	NA	S
Sofa - Comfortfit 81" x 70" L-Sofa w/Jack-knife	S	NA	S	NA
Sofa - Comfortfit 95" x 70" L-Sofa w/Air Bed	NA	S	NA	NA
Free Standing Recliner w/Footrest	S	S	NA	NA
U-Shaped Dinette	NA	NA	S	NA
Dinette - Free Standing Dinette Buffet w/Two Standing Chairs & Two Folding Chairs	S	S	NA	NA
Dinette - Facing Booth	NA	NA	NA	S
Polished Solid Surface Countertops	S	S	S	S
Bedroom Countertops	S	S	S	S
Solid Surface Dinette Tabletop	S	S	S	S
Electric Fireplace	S	S	S	S
Interior Flat Soft Touch Vinyl Ceiling	S	S	S	S
Market Tile Flooring 12" x 24"	S	S	S	S
Living Room & Dining Slideouts	S	S	S	S
Full Extension Drawer Guides Throughout w/Latches	S	S	S	S
Hidden Hinges Throughout	S	S	S	S

INTERIOR CONTINUED	37R	38F	38K	38N
Solid Cabinet Construction	S	S	S	S
Solid Crown Molding at Ceiling	S	S	S	S
Solid Raised Panel Cabinet Doors	S	S	S	S
Solid Drawer Fronts w/Birch Box Construction	S	S	S	S
Flat Non-Panel Passage Doors Throughout	S	S	S	S
Color Coordinating Solid Fascia/Trim/Ceiling Feature Trim	S	S	S	S
Coordinating Valance w/Lambrequins	S	S	S	S
Manual Day/Night Roller Shades Throughout - Black/Black	S	S	S	S
Energy Efficient LED 3" Puck Flush Mount Ceiling & Accent Wall Lighting Throughout	S	S	S	S
Multi-Plex Lighting w/Smart APP Controls	S	S	S	S
Front Overhead LCD TV	S	S	S	S
Sofa - Comfortfit 95" Sofa w/Air Bed	NA	O	NA	NA
Sofa - Comfortfit 78"x70" L-Sofa w/Jack-knife	O	NA	NA	NA
Theatre Seating	O	NA	O	O
Free Standing Dinette w/Credenza	NA	NA	O	O
Facing Booth Dinette	O	O	NA	NA
L-Shape Dinette	NA	NA	NA	O
KITCHEN	37R	38F	38K	38N
Refrigerator - 19 cu.ft. Residential Stainless Steel	S	S	S	S
Flush-mount Induction Cooktop	S	S	S	S
Stainless Steel Over-the-Range Convection Microwave	S	S	S	S
Solid Surface Galley Countertop	S	S	S	S
Hand Laid Glass Tile Backsplash	S	S	S	S
Deep Double Bowl Undermount Stainless Steel Sink	S	S	S	S
Polished Solid Surface Sink Covers	S	S	S	S
Residential Single Handle Faucet w/Pullout Sprayer - Satin Nickel	S	S	S	S
Manual Night Roller Shade - Black	S	S	S	S
Pantry Raised Panel Door w/Birch Finish Interior Shelves	S	S	S	S
Pull-Out Kitchen Countertop	S	S	S	S
Adjustable Kitchen Shelves	S	S	S	S
Full-Extension Drawer Guides w/Latches	S	S	S	S
Fantastic® Power Vent w/Wall Switch	S	S	S	S
Waste Basket	S	S	S	S
BEDROOM/BUNK AREA	37R	38F	38K	38N
King Encore Series Memory Foam Mattress w/Adjustable Head	S	S	S	S
Lift-up Bed w/Under Bed Storage	S	S	S	S
Bunk Beds 28" x 73" w/5" Foam Mattress	NA	NA	NA	S
Dual Flat Panel Monitors	NA	NA	NA	S
Designer Bedspread, Pillow Shams & Pillows	S	S	S	S
Bunk Bed w/Privacy Shades	S	S	S	S
Coordinating Fabric Window Treatments & Lambrequins	S	S	S	S
Manual Day/Night Roller Shades - Black/Black	S	S	S	S
Energy Efficient LED Flush Mount Ceiling Lighting	S	S	S	S
Energy Efficient LED & Under Cabinet Reading Lights	S	S	S	S
Remote Generator Start Switch	S	S	S	S
Solid Raised Panel Cabinet Doors	S	S	S	S
Solid Cabinet Wardrobe Doors w/Mirrors	S	S	S	S
Nightstand Tops	S	S	S	S
Cedar Lined Rear Wardrobe Closet	S	S	S	S
Decorative Padded Headboard	S	S	S	S
LAVY	37R	38F	38K	38N
Solid Surface Lavy Countertop	S	S	S	S
Stainless Undermount Lavy Sink	S	S	S	S
Residential Brushed Nickel Double Handle Faucet	S	S	S	S
Deluxe Hardwood Medicine Cabinet w/Mirror	S	S	S	S
One-Piece Fiberglass Shower Surround	S	S	S	S
Glass Shower Door	S	S	S	S

LAVY	37R	38F	38K	38N
Shower Skylight	S	S	S	S
Metal Shower Head w/Sliding Adjustable Bar, Soap Dish & Matching Single Valve Faucet	S	S	S	S
Porcelain Foot-flush Toilet w/Water Saver	S	NA	S	NA
Porcelain Maserator Toilet	NA	S	S	S
Coordinating Fabric Window Treatment	S	S	S	S
Dual Towel Rings & Toilet Paper - Satin Nickel	S	S	S	S
Powered Roof Vent(s)	S	S	S	S
ENTERTAINMENT	37R	38F	38K	38N
LG 32" Flat Screen LED TV (Bedroom)	S	NA	S	S
LG 43" Flat Screen LED TV (Bedroom)	NA	S	NA	NA
LG 43" Flat Screen LED TV (Living Area)	NA	NA	S	S
LG 49" Flat Screen LED TV (Living Area)	S	S	NA	NA
Bose® Solo 5 TV Sound System	S	S	S	S
Entertainment Center Box w/40" TV & Soundbar	S	S	S	S
LG 32" Flat Screen LED TV (Front Overhead)	S	S	S	S
ELECTRIC & UTILITIES	37R	38F	38K	38N
Air Conditioner: Two-Roof Mount High Efficiency Ducted 15,000-BTU w/Chill Grill & Rear Heat Pump	S	S	S	S
Third A/C	O	O	O	O
Girard Tankless Water Heater	S	S	S	S
25,000/25,000 BTU Furnace	S	NA	NA	NA
25,000/30,000 BTU Furnace	NA	S	S	S
Service: 50-amp, 120-volt Service Panel	S	S	S	S
Converter: 60 AMP Power Converter - Precision Circuits	S	S	S	S
Inverter: Single 2000W Pure Sine w/Remote - Magnum	S	S	S	S
Electric System	S	S	S	S
Prep for Solar Panel	S	S	S	S
Neutral Loss Protection	S	S	S	S
Generator: 8kW Onan Quiet Diesel	S	S	S	S
Auto Gen Start	S	S	S	S
Batteries: 6V Deep Cycle House Batteries (4)	S	S	S	S
Master Battery Disconnect Switch	S	S	S	S
Water Pump: 12V 3GPM High Capacity Shurflo	S	S	S	S
Water Purification System	S	S	S	S
Gravity Water Fill	S	S	S	S
Exterior Shower	S	S	S	S
Cable TV/Satellite Hookup	S	S	S	S
Toilet Tank San-T-Flush System	S	S	S	S
Single Location Monitor Panel with LPG, Touch Sensor Tank Monitoring & Battery Readout	S	S	S	S
LP/CO & Smoke Detectors & Fire Extinguisher	S	S	S	S
Auxiliary LP Supply, Quick Connect (Passenger Side)	S	S	S	S
Auxiliary Air Chuck (Driver Side Compartment)	S	S	S	S
Exterior GFCI Receptacle in Exterior Storage	S	S	S	S
Central Vacuum System	S	S	S	S
12V USB Charging Outlets	S	S	S	S
Surge Guard Transfer Switch	S	S	S	S
Power Water Hose Reel	S	S	S	S
Stackable Washer/Dryer	S	S	S	S
Auto-Locating Stationary Satellite w/Two Receivers & Programming	S	S	S	S
High-Definition Digital Antenna w/Signal Strength Indicator	S	S	S	S
Ground Fault Interruptor	S	S	S	S
Multi-Plex Wall Switches	S	S	S	S
Technology Package (Bluetooth® Speaker, Porch Light, Wifi Extender, Cell Booster, 160W Solar Panel, Collision Avoidance Mobile Eye)	O	O	O	O

**CSA standards may require substitution or deletion to achieve conformance

Product information, photography and illustrations included in this publication were as accurate as possible at the time of printing.

DIMENSIONS & CAPACITIES

MODEL	37R	38F	38K	38N
Overall Length (inches) ⁴	38' 8"	40' 1"	38' 8"	40' 1"
Overall Height (inches with A/C) ^{5,6}	12' 10"	12' 10"	12' 10"	12' 10"
Overall Width (inches maximum) ^{5,6}	102"	102"	102"	102"
Interior Height (inches maximum)	84"	84"	84"	84"
Interior Width (inches maximum)	96"	96"	96"	96"
Patio Awning Width (feet & inches)	14'	10' 8"	10' 8"	10' 8"
Interior Storage (cu. ft.)	138	173	151	151
Exterior Storage (cu. ft.)	143	156	156	182
Fresh Water Holding Tank (gal)	100	100	100	100
Grey Water Holding Tank (gal)	75	75	75	75
Black Water Holding Tank (gal)	50	50	50	50
Appliance Propane Tank (gal) (WC)	38.7	38.7	38.7	38.7
Tankless Water Heater	S	S	S	S

CHASSIS

MODEL	37R	38F	38K	38N
Wheelbase (inches)	245"	263"	252"	252"
Front GAWR (lbs) ²	12,400	12,400	12,400	12,400
Rear GAWR (lbs) ²	21,000	21,000	21,000	21,000
GCWR (lbs) ³	33,000	33,000	33,000	33,000
Hitch Rating Weight (lbs)	10,000	10,000	10,000	10,000
Tongue Weight (lbs)	1,000	1,000	1,000	1,000
Fuel Capacity (gal)	100	100	100	100

POWER BRIDGE® CHASSIS

Model: Freightliner® XCM Series

Engine: Cummins® ISB 6.7

Transmission: Allison® 2,500 MH
6-Speed, w/Electronic Shifter

Alternator: Delco Remy 160 AMP

Torque: 700 lb.-ft. @ 1,600 RPM

Horsepower: 340 HP

YOUR LOCAL DEALER

DISCLAIMER

1. GVWR (Gross Vehicle Weight Rating) is the maximum permissible weight of this fully loaded motorhome. The GVWR is equal to or greater than the sum of the (UVW) unloaded vehicle weight plus the (OCCC) occupant cargo-carrying capacity*.
 2. GAWR (Gross Axle Weight Rating) is the maximum permissible loaded weight a specific axle is designed to carry.
 3. GCWR (Gross Combined Weight Rating) is the value specified by the motorhome manufacturer as the maximum allowable loaded weight of this motorhome with its towed vehicle. Towing and braking capacities may be different. Refer to Holiday Rambler and chassis manufacturer's manuals for complete information.
 4. Length measured from front bumper to rear bumper (excludes accessories).
 5. Excludes safety equipment and awnings.
 6. Motorhomes feature a body width over 96" which will restrict your access to certain roads. Before purchasing, you should research any state and/or province road laws which may affect your usage.
 7. Tank manufacturer's listed water capacity (WC). Actual propane capacity is 80% of water listing as required by the safety code.
- * The chassis manufacturer recommends the installation of a supplemental brake control system to activate the brakes on the vehicle or trailer you are towing. Hitch receiver ratings expressed are maximum for the hitch receiver installed and may require the purchase of additional equipment that is dependent on the weight of the towed load. Consult with hitch receiver manufacturer for further information.

* UVW and OCCC are found on the label containing the federal certification tag in each RV.

** The Minimum Towable Load of this vehicle is the available weight capacity, up to GCWR, when the coach is fully loaded to maximum GVWR. However, if the coach is loaded to something less than maximum GVWR, that extra available weight capacity can be added to your Towable Load. For example, if your coach is loaded to 1000lbs less than maximum GVWR, your Towable Load increases accordingly. Do not exceed the hitch rating weight, GVWR or GCWR.

** Seatbelts and locations are shown in the brochure for display purposes only. Actual numbers and locations will vary by model.

*** All 2019 REV Recreation Group motorhomes include a limited one-year/15,000-mile coach warranty and three-year/45,000-mile structural warranty, whichever occurs first, and is fully transferable for the first 12 months.

CONTACT US

To locate a dealer near you, visit our website at www.holidayrambler.com or call 1-877-252-4666. We can also be contacted at Holiday Rambler Customer Relations, P.O. Box 1007, Decatur, IN 46733.

IMPORTANT—PLEASE READ: Product information, photography and illustrations included in this publication were as accurate as possible at the time of printing. For further product information and changes, please visit our website at www.holidayrambler.com or contact your local Holiday Rambler dealer. Prices, materials, design and specifications are subject to change without notice. All weights, fuel, liquid capacities and dimensions are approximate. Holiday Rambler has designed its recreational vehicles to provide a variety of uses for customers. Each vehicle features optimal seating, sleeping, storage and fluid capacities. The user is responsible for selecting the proper combination of loads (i.e., occupants, equipment, fluids, cargo, etc.) to ensure that the vehicle's capacities are not exceeded.



HOLIDAY RAMBLER
REV GROUP

Holiday Rambler is part of REV Recreation Group, a division of REV Group, Inc., a family of 33 industry-leading motor vehicle brands. At REV Group, we innovate, design and build products that connect and protect thousands of people every day—our trusted vehicles are engineered with the utmost rigor and precision to deliver the highest levels of performance, reliability, durability and safety.

holidayrambler.com
revgroup.com