

Crossfire, Bullet & Premier

EASTERN TRAVEL TRAILERS

GET AWAY

IN STYLE



FALL PREVIEW



Keystone RV
Company

The ultimate ownership experience.

The goal of Keystone RV Company is to surprise and delight our owners at each and every touchpoint. We're happy when our campers are happy, and we are committed to providing the very best ownership experience in the industry.



1 EASIER SHOPPING.

At Keystone, we make choosing an RV as easy as finding the Big Dipper on a dark summer night. With comprehensive online product information, Key Connect™ product advisors, and an unparalleled dealer network, we will help you select the perfect RV for your family's adventure.

2 INNOVATIVE THINKING.

The road's a nicer place when you have the industry's smartest features behind you. Keystone leads the pack in patented innovations that make our RVs safer, more comfortable, and easier to operate.

3 LONG HAUL QUALITY.

To keep you on the road, there are certain things we just won't build a Keystone RV without. Game-changing features like our Unified Wiring Standard, Tru-Fit™ five-point slide construction, and no-fail Tuf-Lok™ A/C duct joiners combined with exhaustive testing and inspections are some of the reasons why Keystone is able to offer our owners the industry's best 3-year limited structural warranty.

4 WORRY-FREE CUSTOMER SERVICE.

Wherever the road takes you, you're never too far from an authorized Keystone service center. We also offer live service assistance, ultra-fast parts shipping, online maintenance tips and tricks, and a single-point warranty claims policy. *That's* peace of mind.

5 KEYSTONE NATION.

When you choose Keystone, you become one of the largest camping families in the country. We're Keystone Nation. A friendly community where people share photos, travel tips and amazing stories – all in the spirit of camaraderie and adventure. Come join us.

Experience the Bullet lifestyle by visiting [#bullet](#)



BULLET



CROSSFIRE | BULLET | PREMIER

Bullet has the ultimate line-up for any adventure.

Bullet is the ultra-light coach with a luxurious look and feel, an abundance of practical features, innovative floorplans, and unrivaled towability at the lightest weight possible. It truly is the original luxury lightweight RV. With the request for more amenities in new, groundbreaking floorplans Bullet delivered once again with the Bullet Premier. Since its inception, Bullet has always been committed to listening to the customer and building what they want most. That simple approach not only built the brand into the #1 selling travel trailer in its segment, it resulted in the easiest to tow ultra-light that truly feels like home.

For more information, please visit kestonerv.com/bullet



more product detail at
www.keystonerv.com/Bullet

Crossfire

TRAVEL TRAILERS

- New Coastal Cottage interior
- Four stabilizer jacks
- LED awning light
- Dual propane tanks with cover
- Friction-hinge entry doors
- Bluetooth AM/FM Stereo
- Stainless steel microwave
- Tub surround with shelves
- Oversized double basin sink with high rise faucet
- Continuous-edge laminated kitchen countertops
- Hidden hinges on cabinet doors
- Interior LED lights
- Enclosed underbelly
- Roof mount 13,500 BTU A/C



Stainless steel microwave

Stainless steel microwave adds to the modern feel of the bright interior



Interior LED lights

LED lighting draws less energy than regular bulbs and gives off less heat



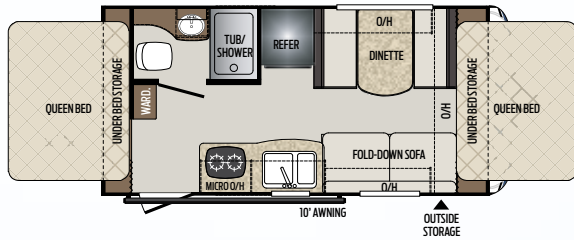
Continuous-edge laminated kitchen countertops

The continuous, seamless edge on the countertop reinforces durability and adds a clean, modern appearance

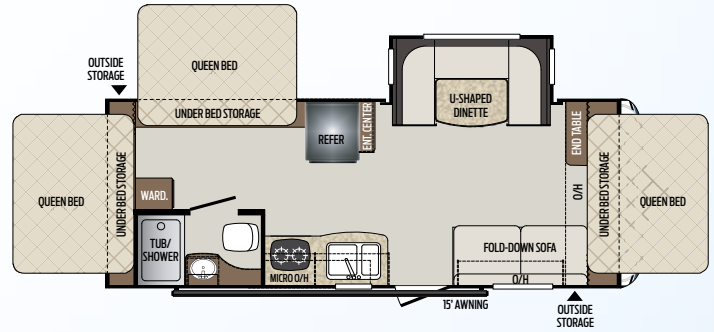


Heavy duty hidden hinge

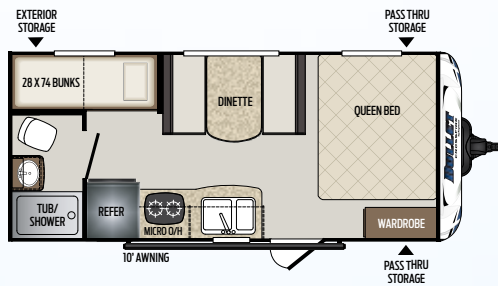
Hidden hinges on the cabinets offer a residential look and a high-end feel



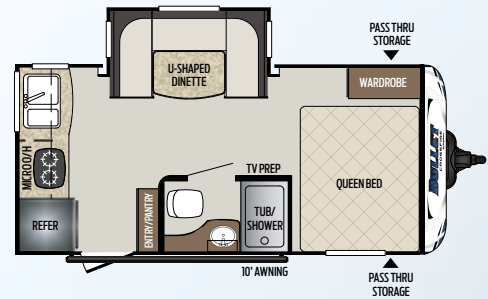
1650EX | Two tent expandable
Weight: 3420 LBS. | Length: 19' 6"



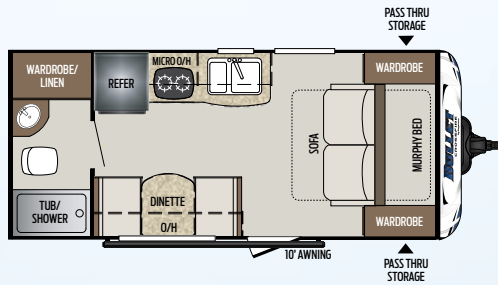
2190EX | Three tent expandable w/dinette slide
Weight: 4480 LBS. | Length: 24' 11"



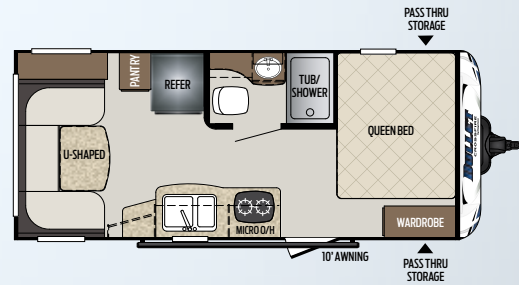
1700BH | Bunk house, single axle
Weight: TBD | Length: 21' 4"



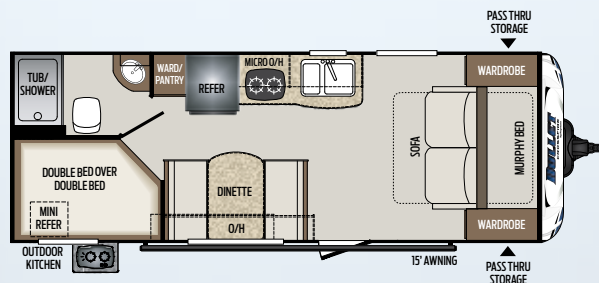
1750RK | Rear kitchen w/dinette slide
Weight: 3555 LBS. | Length: 20' 4"



1800RB | Rear bath w/murphy bed
Weight: 3310 LBS. | Length: 21' 4"



1900RD | Rear dinette, no slides
Weight: 3360 LBS. | Length: 21' 11"



2200BH | Bunkhouse w/outside kitchen
Weight: 4110 LBS. | Length: 25' 4"



more product detail at
www.keystonerv.com/Bullet

Bullet | TRAVEL TRAILERS

- New Coastal Cottage interior
- 60" x 80" queen bed (N/A 330BHS)
- LED awning light
- 9" triple entry steps
- Aluminum wheels
- Power tongue jack
- Friction-hinge entry doors
- Peg board in pass-through storage
- Outdoor TV prep
- Dream Dinette™
- Stainless steel sink
- Bluetooth AM/FM stereo with AUX, DVD and USB
- Furrion® flush-mounted glass cooktop and low-profile hood vent with stainless steel microwave
- Outdoor kitchen with refrigerator and two-burner cooktop (N/A 221RBS, 248RKS, 269RLS, 273BHS)
- 32" LED TV (N/A 261RBS)
- 42" LED TV (261RBS)
- Continuous-edge laminated kitchen countertops
- Heavy duty, shaker-style, painted cabinet doors with hidden hinges
- Two rows of interior LED lights in living area
- Backsplash behind range (N/A select floorplans)
- KeyTV™ Keystone's revolutionary single-source, easy-to-use controller for over-the-air, cable and satellite television



Hidden hinges

Hidden hinges on the cabinets offer a residential look and a high-end feel

Furrion® kitchen appliances

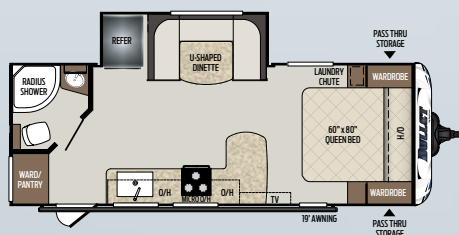
Furrion® flush-mounted glass cooktop and low-profile hood vent with stainless steel microwave

EXCLUSIVE KeyTV™

Game-changing single point control of over-the-air, cable and satellite feeds

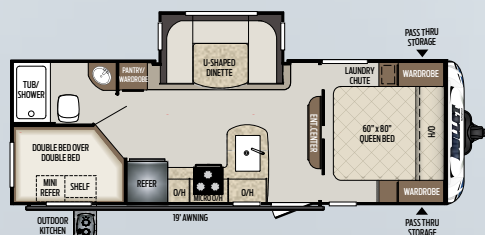
Continuous-edge laminated kitchen countertops

The continuous, seamless edge on the countertop reinforces durability and adds a clean, modern appearance



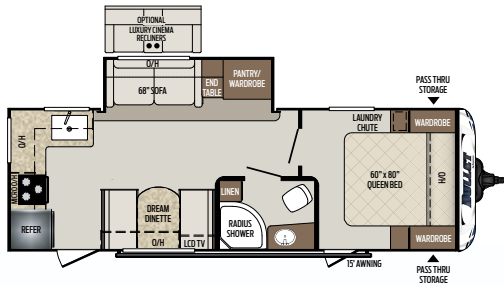
221RBS

Rear bath, one slide
 Weight: TBD LBS. | Length: 26' 8"

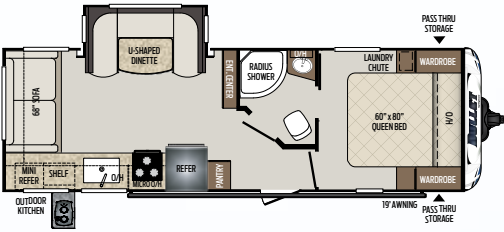


243BHS

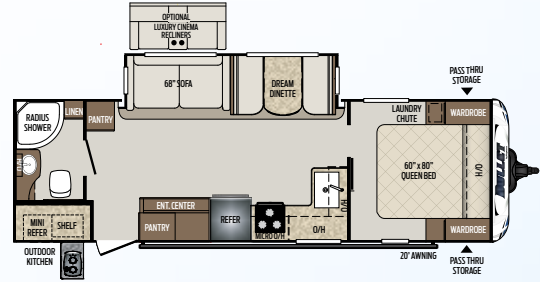
Bunkhouse, one slide
 Weight: 5075 LBS. | Length: 28' 10"



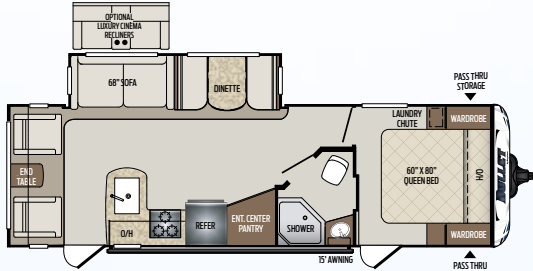
248RKS | Rear kitchen, one slide
Weight: 5240 LBS. | Length: 29' 10"



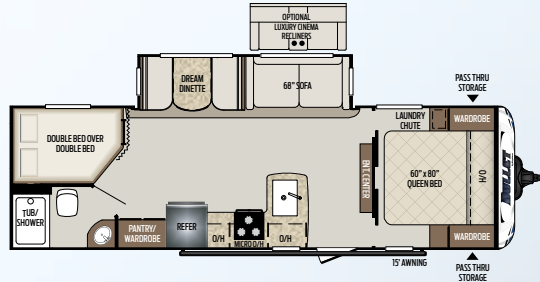
257RSS | Rear sofa, one slide
Weight: 5158 LBS. | Length: 29' 11"



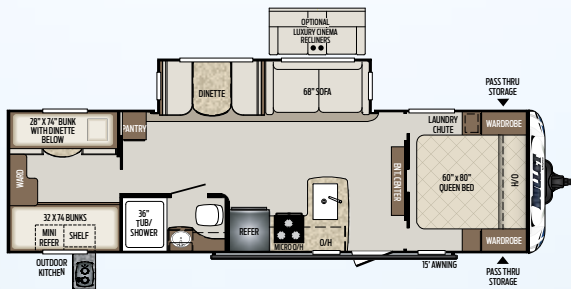
261RBS | Rear bath, outside kitchen
Weight: 5465 LBS. | Length: 31'



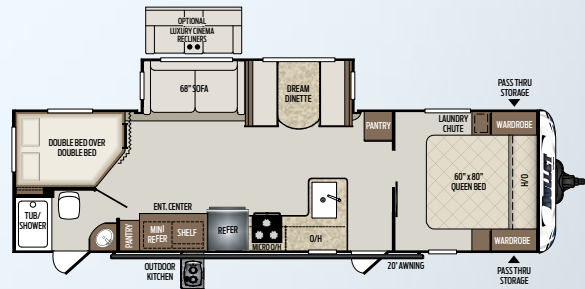
269RLS | Rear living, two entries
Weight: 5530 LBS. | Length: 32' 5"



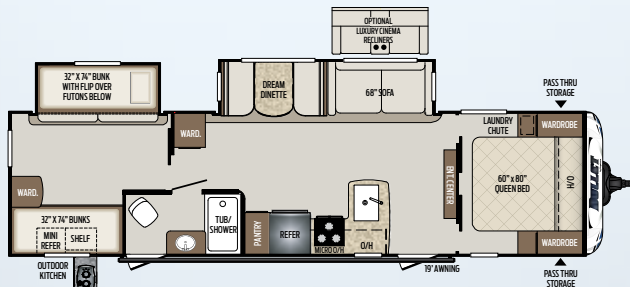
273BHS | Bunk house, one slide
Weight: 5393 LBS. | Length: 31' 3"



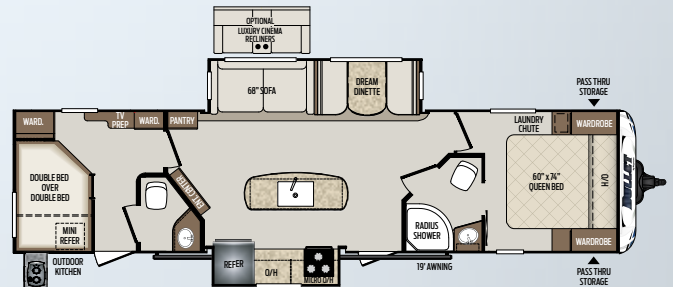
287QBS | Quad bunk house, outside kitchen
Weight: 5925 LBS. | Length: 33' 10"



290BHS | Bunk house, outside kitchen
Weight: TBD LBS. | Length: 33' 9"



308BHS | Bunk house, two slides
Weight: 6397 LBS. | Length: 36'



330BHS | Bunk house, 1 and 1/2 baths
Weight: 6981 LBS. | Length: 37' 8"



more product detail at
www.keystonerv.com/Premier

Premier | TRAVEL TRAILERS

- New Coastal Cottage interior
- LED awning light
- Ultra-stable and secure MORryde® Step Above™ steps
- Aluminum wheels
- Power tongue jack
- Friction-hinge entry doors
- Peg board in pass-through storage
- Outdoor kitchen with galvanized countertop (22RBPR, 26RBPR, 29BHPR, 29RKPR)
- Outdoor entertainment center w/32" TV and refrigerator (30RIPR, 34BIPR)
- Furrion® flush-mounted glass cooktop and low-profile hood vent with stainless steel microwave
- Stainless steel sink
- Porcelain toilet
- 8 cu. ft. stainless steel double door refrigerator
- 32" LED TV (N/A 26RBPR, 29BHPR, 30RIPR, 34BIPR, 34RIPR)
- 42" LED TV (26RBPR, 29BHPR, 30RIPR, 34BIPR, 34RIPR)
- Solid surface kitchen countertops
- Dream Dinette™
- Hidden hinges on cabinet doors
- Interior LED lights
- Backsplash behind range
- Residential size queen bed
- Norco® 5.1 electric stabilization system
- KeyTV™ Keystone's revolutionary single-source, easy-to-use controller for over-the-air, cable and satellite television



Ultra-stable and secure MORryde® Step Above™ steps
Ultra-stable and secure MORryde® Step Above™ steps with Keystone kick plate



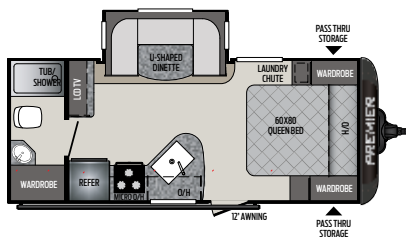
Furrion® kitchen appliances
Furrion® flush-mounted glass cooktop and low-profile hood vent with stainless steel microwave



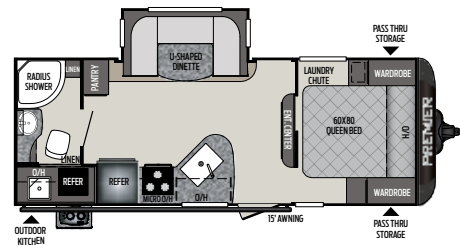
EXCLUSIVE KeyTV™
Game-changing single point control of over-the-air, cable and satellite feeds



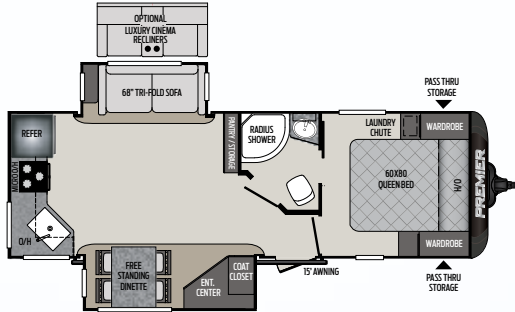
Hidden hinges
Hidden hinges on the cabinets offer a residential look and a high-end feel



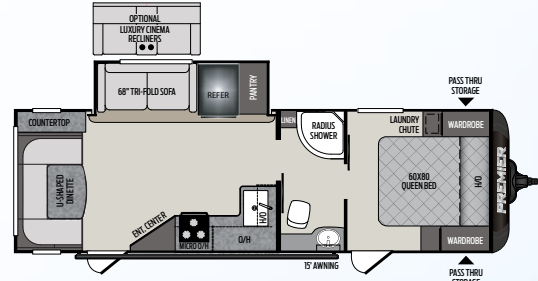
19FBPR | Rear bath, one slide
Weight: 4353 LBS. | Length: 24' 3"



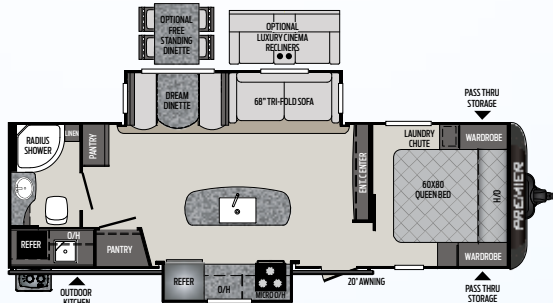
22RBPR | Rear bath, outside kitchen
Weight: 4972 LBS. | Length: 26' 11"



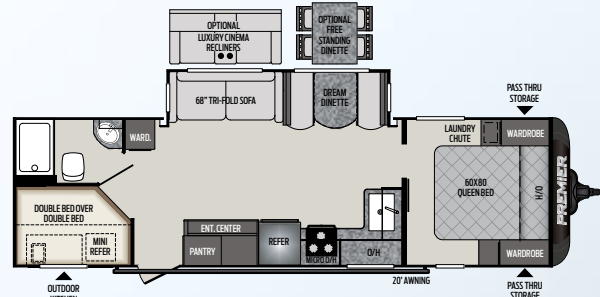
24RKPR | Rear kitchen, two slides
Weight: 5563 LBS. | Length: 29' 6"



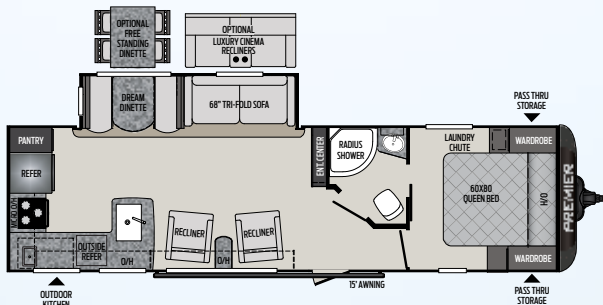
26UDPR | Rear dining, one slide
Weight: TBD | Length: TBD



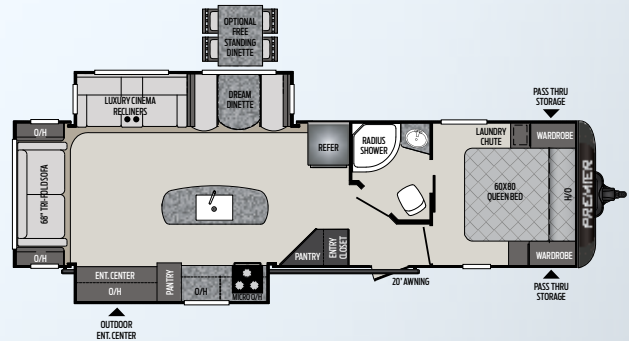
26RBPR | Rear bath, island kitchen
Weight: 6121 LBS. | Length: 32'



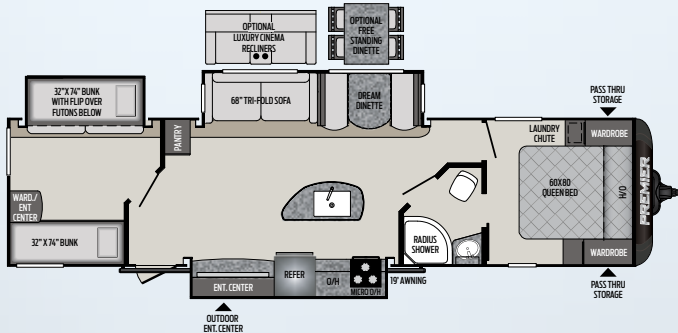
29BHPR | Bunk house, outside kitchen
Weight: 5985 LBS. | Length: 33' 4"



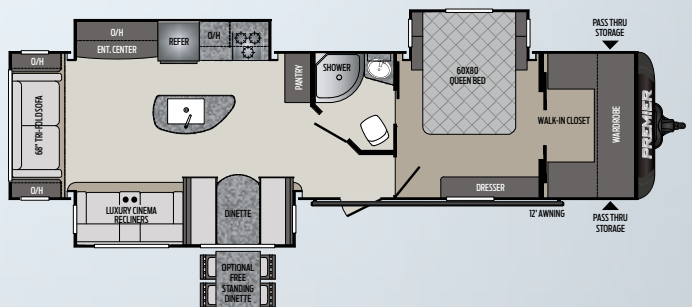
29RKPR | Rear kitchen, one slide
Weight: 6172 LBS. | Length: 34' 5"



30RIPR | Rear living room, island kitchen
Weight: 6870 LBS. | Length: 35' 11"



34BIPR | Bunk house, three slides
Weight: 7285 LBS. | Length: 38' 1"



34RIPR | Rear living room, bed slide
Weight: 7495 LBS. | Length: 38' 3"

CROSSFIRE TRAVEL TRAILERS

MODEL	WEIGHT	CARRYING CAPACITY	HITCH WEIGHT	FRESH WATER	WASTE WATER	GRAY WATER	LPG	LENGTH*	WIDTH	HEIGHT	AWNING
1650EX	3420	1280	470	43	30	30	40	19' 6"	8'	10' 5"	10'
1700BH	TBD	TBD	TBD	43	30	30	40	21' 4"	8'	10' 4"	10'
1750RK	3555	1145	400	43	30	60	40	20' 4"	8'	10' 5"	10'
1800RB	3310	1090	480	43	30	30	40	21' 4"	8'	10' 5"	10'
1900RD	3360	1340	490	43	30	30	40	21' 11"	8'	10' 5"	10'
2070BH	3770	1630	405	43	30	30	40	23' 8"	8'	10' 4"	15'
2190EX	4480	1820	610	43	30	30	40	24' 11"	8'	10' 4"	15'
2200BH	4110	2190	425	43	30	30	40	25' 4"	8'	10' 4"	15'

BULLET TRAVEL TRAILERS

MODEL	WEIGHT	CARRYING CAPACITY	HITCH WEIGHT	FRESH WATER	WASTE WATER	GRAY WATER	LPG	LENGTH*	WIDTH	HEIGHT	AWNING
221RBS	TBD	TBD	TBD	43	30	30	40	26' 8"	8'	10' 8"	15'
243BHS	4940	1560	580	43	30	30	40	28' 4"	8'	10' 8"	19'
248RKS	5148	1352	580	43	30	60	40	29' 4"	8'	10' 8"	15'
257RSS	5158	2142	570	43	30	30	40	29' 11"	8'	10' 8"	19'
261RBS	5465	2135	600	43	30	60	40	31'	8'	10' 8"	20'
269RLS	5530	2070	705	43	30	30	40	32' 5"	8'	10' 8"	15'
273BHS	5393	2217	610	43	30	30	40	31' 3"	8'	10' 8"	15'
277BHS	5563	2037	635	43	30	60	40	32'	8'	10' 8"	20'
287QBS	5840	1760	735	43	30	30	40	33' 4"	8'	10' 8"	15'
290BHS	TBD	TBD	TBD	43	30	60	40	33' 9"	8'	10' 8"	20'
308BHS	6397	1203	730	43	30	30	40	36'	8'	10' 8"	19'
330BHS	6981	1619	800	43	60	30	40	37' 8"	8'	10' 11"	19'

PREMIER TRAVEL TRAILERS

MODEL	WEIGHT	CARRYING CAPACITY	HITCH WEIGHT	FRESH WATER	WASTE WATER	GRAY WATER	LPG	LENGTH*	WIDTH	HEIGHT	AWNING
19FBPR	4353	2147	480	43	30	30	40	24' 3"	8'	11' 0"	12'
22RBPR	4972	1528	590	43	30	30	40	26' 11"	8'	11' 0"	15'
24RKPR	5563	1937	655	43	30	60	40	29' 6"	8'	11' 0"	15'
26UDPR	TBD	TBD	TBD	43	30	60	40	32'	8'	11' 0"	19'
26RBPR	6121	1379	755	43	30	60	40	32'	8'	11' 0"	20'
29BHPR	5985	1615	610	43	30	60	40	33' 4"	8'	11' 1"	20'
29RKPR	6172	1428	685	43	30	60	40	34' 5"	8'	11' 1"	15'
30RIPR	6870	1330	865	43	30	60	40	35' 11"	8'	11' 2"	20'
34BIPR	7285	2115	975	43	30	30	40	38' 1"	8'	11' 4"	19'
34RIPR	7495	1905	980	43	30	60	40	38' 3"	8'	11' 4"	12'

DISCLAIMER: Product information is as accurate as possible as of the date of publication of this brochure. All features, floor plans, and specifications in this brochure are subject to change without notice. Please also consult Keystone's web site at www.keystonerv.com for more current product information and specifications. Tow Vehicle Disclaimer. CAUTION: Owners of Keystone recreational vehicles are solely responsible for the selection and proper use of tow vehicles. All customers should consult with a motor vehicle manufacturer or their dealer concerning the purchase and use of suitable tow vehicles for Keystone products. Keystone disclaims any liability or damages suffered as a result of the selection, operation, use or misuse of a tow vehicle. KEYSTONE'S LIMITED WARRANTY DOES NOT COVER DAMAGE TO THE RECREATIONAL VEHICLE OR THE TOW VEHICLE AS A RESULT OF THE SELECTION, OPERATION, USE OR MISUSE OF THE TOW VEHICLE. *Length is defined as the distance from the centerline of hitch pin/coupler to rear bumper of trailer.

THERMAL PACKAGE (BULLET, PREMIER)*

- Ducted Heat and Enclosed Heated Underbelly
- 2" Duct off of Furnace to Underbelly
- 30K BTU Furnace and Residential Heat Ducts

PREMIER PACKAGE (PREMIER) *

- Aerodynamic Fiberglass Painted Front Cap
- 6' 11" Vaulted Ceiling
- Power Tongue Jack
- 5.1 Electric Stabilization System
- Max Depth Slides
- LED Flush Mounted Puck Lighting

STANDARDS AND OPTIONS

CF Crossfire Travel Trailers
BL Bullet Travel Trailers
PR Premier Travel Trailers

	CF	BL	PR
CONSTRUCTION STANDARDS			
Aggressive front profile for increased towability	●	●	●
Aluminum-framed side, front and rear walls	●	●	●
2" aluminum framed floor	●	●	●
Aluminum framed slideouts	●	●	●
Darco moisture barrier	●	●	●
In-frame fresh, gray, and black water tanks	●	●	●
7.5" - 10.5" Steel z-beam with full-length welded outrigger	●	●	●
EXTERIOR CAMPING PACKAGE			
6-gallon gas/electric DSI quick recovery water heater	●	●	●
Outside speakers	●	●	●
(4) stabilizer jacks	●	●	●
TV antenna and cable/satellite hook-up	●	●	●
Electric awning	●	●	●
LED awning light	●	●	●
Wide-stance Dexter® E-Z Lube axles	●	●	●
Outside shower (hot and cold water)	●	●	●
Black tank flush		●	●
EXTERIOR			
Dual propane tanks with cover	●	●	●
Spare tire	●	●	●
Oversized grab handle (main door)		●	●
9" Triple entry steps		●	
Solid step entry steps			●
Magnetic storage door catches	●	●	●
Aluminum wheels		●	●
Power tongue jack		●	●
Oversized exterior pass thru storage with lighting		●	●
Fiberglass front cap		●	●
Entry door with friction hinges	●	●	●
Peg board in pass thru storage		●	●
TV hookup prep		●	●
LP quick connect		●	●
Outdoor kitchen with galvanized countertop (22RBPR, 29RKPR, 30RIPR, 31BHPR, 34BHPR)			●
Outdoor kitchen (2200BH, 243BHS, 257RSS, 261RBS, 272BHS, 287QBS, 308BHS, 330BHS)	●	●	
Enclosed underbelly	●	●	●
INTERIOR CAMPING PACKAGE			
13.5 BTU A/C	●	●	●
Bluetooth AM/FM Stereo with Aux, DVD and iPod Hookup		●	●
Bluetooth AM/FM Stereo with Aux and iPod Hookup	●		
Full extension drawer glides	●	●	●
Stainless steel sink		●	●

	CF	BL	PR
8 cu. ft. stainless steel double door refrigerator			●
6 cu. ft. stainless steel double door refrigerator	●	●	
32" LED TV (N/A 261RBS, 26RBPR, 29BHPR, 30RIPR, 34RIPR, 34BIPR)		●	●
42" LED TV (261RBS, 26RBPR, 29BHPR, 30RIPR, 34RIPR, 34BIPR)		●	●
Flush-mount 3 burner range with glass cover		●	●
INTERIOR			
Self-edge laminated kitchen countertops	●	●	
Solid surface kitchen countertops			●
Dream dinette		●	●
Hidden hinges on cabinet doors	●	●	●
Residential style furniture	●	●	●
Water heater-by-pass for winterization	●	●	●
Interior LED lights	●	●	●
Low profile range hood	●	●	●
Stor-Mor™ dinette			●
BATHROOM			
Power vent fan	●	●	●
Solid wood medicine cabinet	●	●	●
Deluxe radius shower w/glass door		●	●
Porcelain foot flush toilet			●
Tub surround with shelves	●	●	●
MASTER BEDROOM			
Residential-size queen bed (N/A 330BHS)		●	●
Individual LED reading lights		●	●
Hardwood entry doors		●	●
Laundry chute		●	●
Dual USB charging port		●	●
SAFETY EQUIPMENT			
Carbon monoxide detector	●	●	●
Smoke alarm	●	●	●
Tinted safety glass windows, egress windows (fire escape)	●	●	●
OPTIONS			
Bumper-mounted Aussie grill		●	●
15K A/C		●	●
50 AMP service w/second A/C (N/A Premier 19FBPR, 22RBPR, 24RKPR) (Bullet 308BHS, 330BHS Only)		●	●
Free-standing dinette		●	●
Theater seating (replaces tri-fold sofa)		●	●
5.1 electric stabilization system (mandatory)			●

BUILT FOR THE LONG HAUL



PRINT 8.2018



**Keystone RV
Company**

Crossfire, Bullet & Premier

WESTERN TRAVEL TRAILERS

GET AWAY

IN STYLE



FALL PREVIEW



The ultimate ownership experience.

The goal of Keystone RV Company is to surprise and delight our owners at each and every touchpoint. We're happy when our campers are happy, and we are committed to providing the very best ownership experience in the industry.



1 EASIER SHOPPING.

At Keystone, we make choosing an RV as easy as finding the Big Dipper on a dark summer night. With comprehensive online product information, Key Connect™ product advisors, and an unparalleled dealer network, we will help you select the perfect RV for your family's adventure.

2 INNOVATIVE THINKING.

The road's a nicer place when you have the industry's smartest features behind you. Keystone leads the pack in patented innovations that make our RVs safer, more comfortable, and easier to operate.

3 LONG HAUL QUALITY.

To keep you on the road, there are certain things we just won't build a Keystone RV without. Game-changing features like our Unified Wiring Standard, Tru-Fit™ five-point slide construction, and no-fail Tuf-Lok™ A/C duct joiners combined with exhaustive testing and inspections are some of the reasons why Keystone is able to offer our owners the industry's best 3-year limited structural warranty.

4 WORRY-FREE CUSTOMER SERVICE.

Wherever the road takes you, you're never too far from an authorized Keystone service center. We also offer live service assistance, ultra-fast parts shipping, online maintenance tips and tricks, and a single-point warranty claims policy. *That's* peace of mind.

5 KEYSTONE NATION.

When you choose Keystone, you become one of the largest camping families in the country. We're Keystone Nation. A friendly community where people share photos, travel tips and amazing stories – all in the spirit of camaraderie and adventure. Come join us.

Experience the Bullet lifestyle by visiting [#bullet](#)



BULLET



CROSSFIRE | BULLET | PREMIER

Bullet has the ultimate line-up for any adventure.

Bullet is the ultra-light coach with a luxurious look and feel, an abundance of practical features, innovative floorplans, and unrivaled towability at the lightest weight possible. It truly is the original luxury lightweight RV. With the request for more amenities in new, groundbreaking floorplans Bullet delivered once again with the Bullet Premier. Since its inception, Bullet has always been committed to listening to the customer and building what they want most. That simple approach not only built the brand into the #1 selling travel trailer in its segment, it resulted in the easiest to tow ultra-light that truly feels like home.

For more information, please visit keystonerv.com/bullet



more product detail at
www.keystonerv.com/Bullet

Crossfire

TRAVEL TRAILERS

- New Coastal Cottage interior
- Four stabilizer jacks
- LED awning light
- Dual propane tanks with cover
- Friction-hinge entry doors
- Outdoor kitchen with refrigerator and two-burner cooktop
- Bluetooth AM/FM Stereo with aux and USB
- Stainless steel microwave
- Tub surround with shelves
- Oversized double basin sink with high rise faucet
- Continuous-edge laminated kitchen countertops
- Hidden hinges on cabinet doors
- Interior LED lights
- Enclosed underbelly
- Roof mount 13.5 BTU A/C



Stainless steel microwave

Stainless steel microwave adds to the modern feel of the bright interior



Interior LED lights

LED lighting draws less energy than regular bulbs and gives off less heat



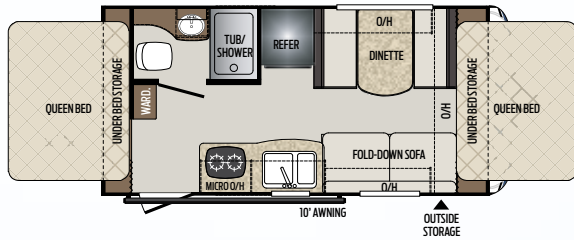
Continuous-edge laminated kitchen countertops

The continuous, seamless edge on the countertop reinforces durability and adds a clean, modern appearance

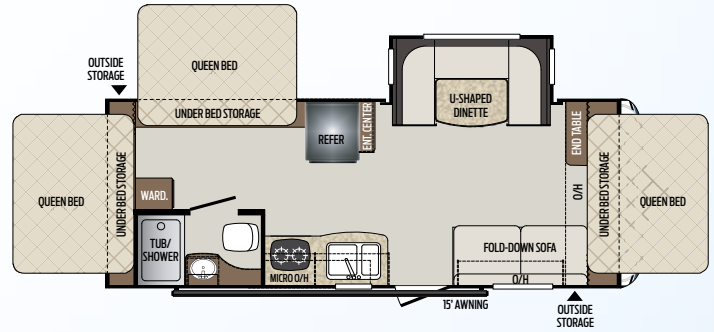


Porcelain toilet

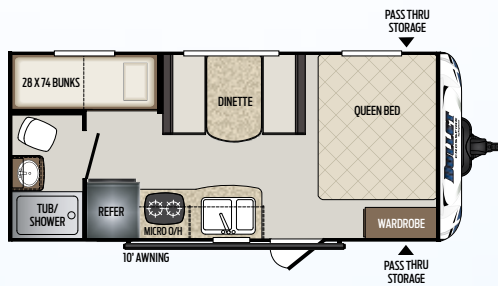
Upgraded fixture with foot flush



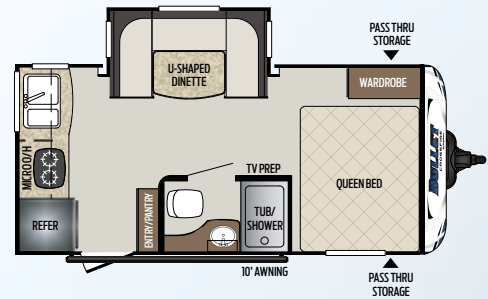
1650EX | Two tent expandable
Weight: 3420 LBS. | Length: 19' 6"



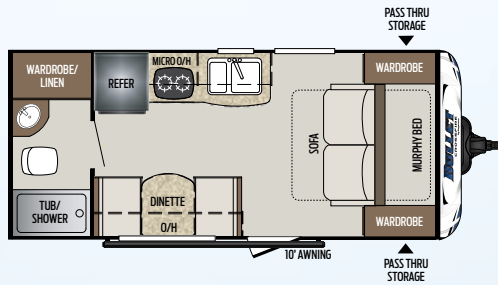
2190EX | Three tent expandable w/dinette slide
Weight: 4480 LBS. | Length: 24' 11"



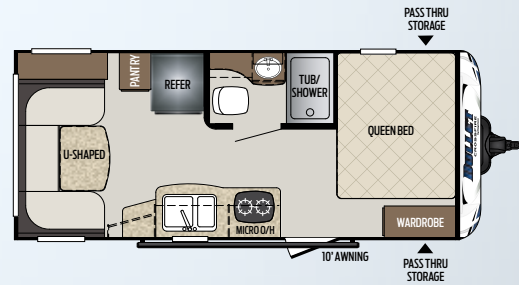
1700BH | Bunk house, single axle
Weight: TBD | Length: 21' 4"



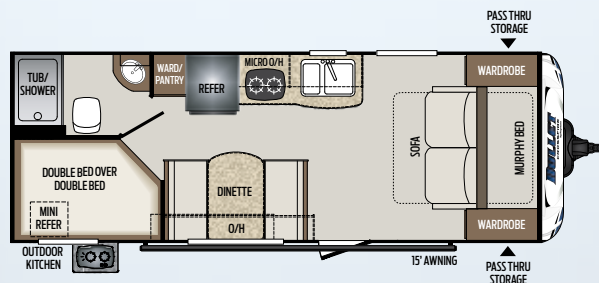
1750RK | Rear kitchen w/dinette slide
Weight: 3555 LBS. | Length: 20' 4"



1800RB | Rear bath w/murphy bed
Weight: 3310 LBS. | Length: 21' 4"



1900RD | Rear dinette, no slides
Weight: 3360 LBS. | Length: 21' 11"



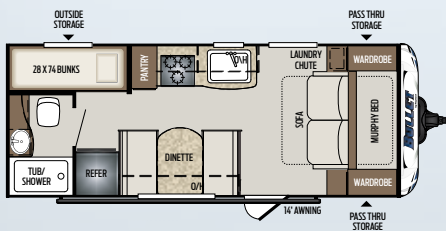
2200BH | Bunkhouse w/outside kitchen
Weight: 4110 LBS. | Length: 25' 4"



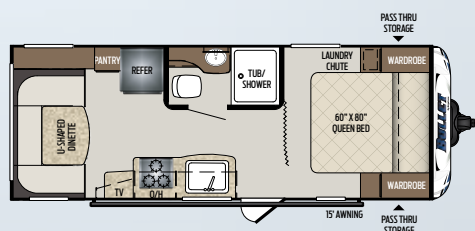
more product detail at
www.keystonerv.com/Bullet

Bullet | TRAVEL TRAILERS

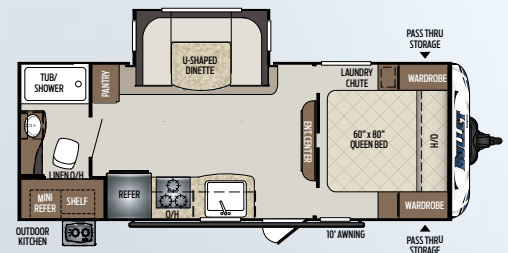
- New Coastal Cottage interior
- 60" x 80" queen bed
- LED awning light
- Aluminum wheels
- Power tongue jack
- Friction-hinge entry doors
- Peg board in pass-through storage
- Outdoor TV prep
- Dream Dinette™
- Stainless steel sink
- Bluetooth AM/FM stereo with AUX, DVD and USB
- Furrion® flush-mounted glass cooktop and low-profile hood vent with stainless steel microwave
- Outdoor kitchen with refrigerator and two-burner cooktop (N/A 221RBS, 248RKS, 269RLS, 290BHSWE)
- 32" LED TV (N/A 261RBS)
- 42" LED TV (261RBS)
- Continuous-edge laminated kitchen countertops
- Heavy duty, shaker-style, painted cabinet doors
- Two rows of interior LED lights in living area
- Backsplash behind range (n/a select floorplans)
- KeyTV™ Keystone's revolutionary single-source, easy-to-use controller for over-the-air, cable and satellite television



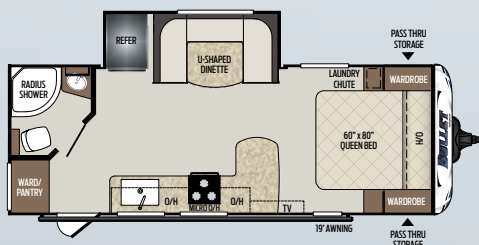
202BHSWE | Bunk house, rear bath
 Weight: 4003 LBS. | Length: 24' 4"



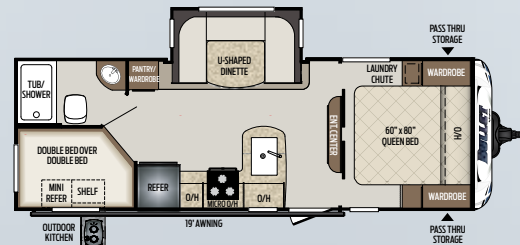
210RUDWE | Rear u-shaped dinette
 Weight: 4318 LBS. | Length: 26' 5"



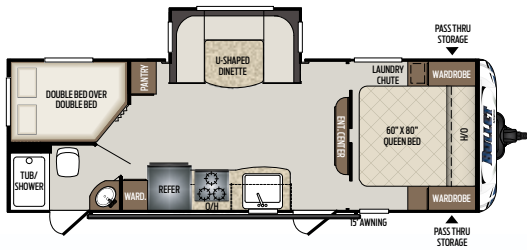
212RBSWE | Rear bath, outside kitchen
 Weight: 4675 LBS. | Length: 26'



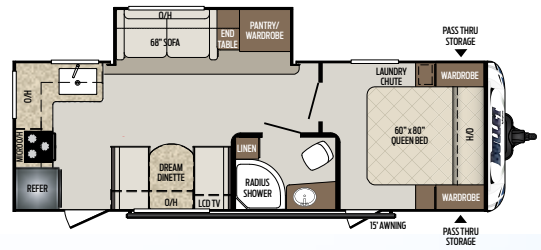
221RBSWE | Rear bath, one slide
 Weight: TBD | Length: 26' 8"



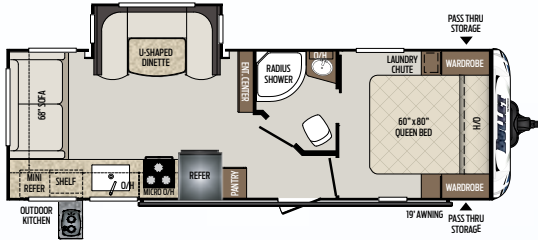
243BHSWE | Bunk house, outside kitchen
 Weight: 5088 LBS. | Length: 28' 10"



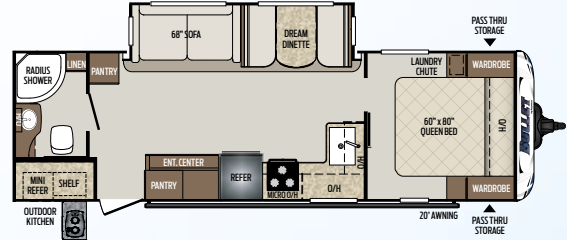
247BHSWE | Bunk house, two entries
Weight: 5170 LBS. | Length: 29' 4"



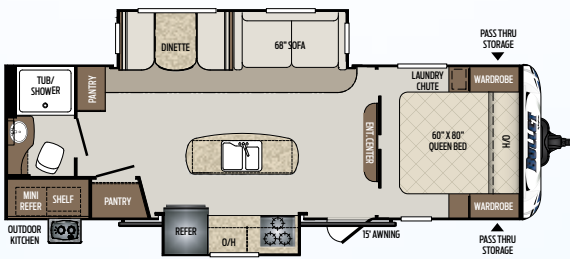
248RKSWE | Rear kitchen, one slide
Weight: 5286 LBS. | Length: 29' 10"



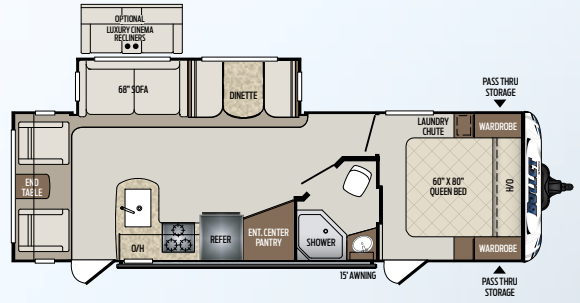
257RSSWE | Rear sofa, one slide
Weight: 5158 LBS. | Length: 29' 11"



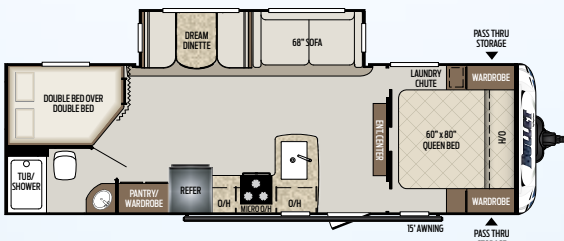
261RBSWE | Rear bath, outside kitchen
Weight: 5544 LBS. | Length: 31'



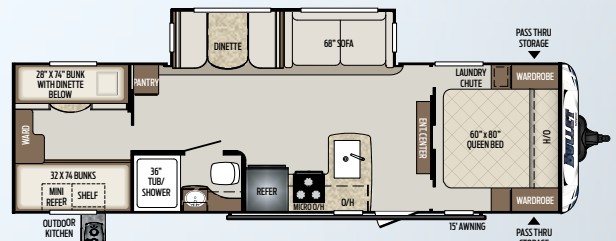
265RBIWE | Rear bath, outside kitchen
Weight: 5803 LBS. | Length: 30'



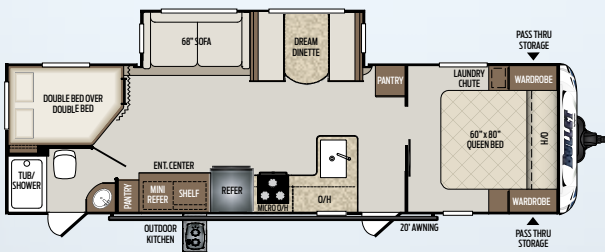
269RLSWE | Rear living, two entries
Weight: 5530 LBS. | Length: 32' 5"



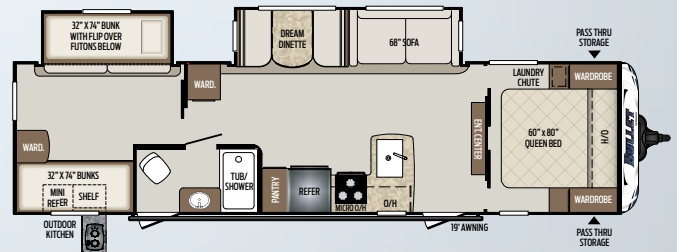
273BHSWE | Bunk house
Weight: TBD | Length: 31' 3"



287QBSWE | Quad bunk house, outside kitchen
Weight: 5930 LBS. | Length: 33' 10"



290BHSWE | Bunk house, outside kitchen
Weight: 5980 LBS. | Length: 33' 9"



308BHSWE | Bunk house, two slides
Weight: 6602 LBS. | Length: 36'



more product detail at
www.keystonerv.com/Premier

Premier

TRAVEL TRAILERS

- New Coastal Cottage interior
- LED awning light
- Ultra-stable and secure MORryde® Step Above™ steps
- Aluminum wheels
- Power tongue jack
- Friction-hinge entry doors
- Peg board in pass-through storage
- Outdoor kitchen with galvanized countertop (22RBPR, 26RBPR, 29BHPR, 29RKPR)
- Outdoor entertainment center w/32" TV and refrigerator (30RIPR, 34BIPR)
- Furrion® flush-mounted glass cooktop and low-profile hood vent with stainless steel microwave
- Stainless steel sink
- Porcelain toilet
- 8 cu. ft. stainless steel double door refrigerator
- 32" LED TV (19FBPR, 22RBPR, 24RKPR, 26UDPR, 29RKPR)
- 42" LED TV (26RBPR, 29BHPR, 30RIPR, 34RIPR, 34BIPR)
- Solid surface kitchen countertops
- Dream Dinette™
- Hidden hinges on cabinet doors
- Interior LED lights
- Backsplash behind range (N/A select floorplans)
- Residential size queen bed
- Norco 5.1 electric stabilization system
- KeyTV™ Keystone's revolutionary single-source, easy-to-use controller for over-the-air, cable and satellite television



Ultra-stable and secure MORryde® Step Above™ steps

Ultra-stable and secure MORryde® Step Above™ steps with Keystone kick plate



Furrion® kitchen appliances

Furrion® flush-mounted glass cooktop and low-profile hood vent with stainless steel microwave



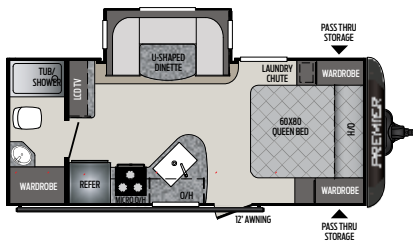
EXCLUSIVE Key TV™

Game-changing single point control of over-the-air, cable and satellite feeds

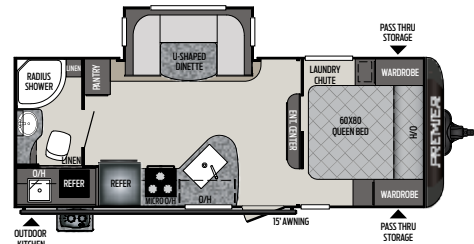


Porcelain toilet

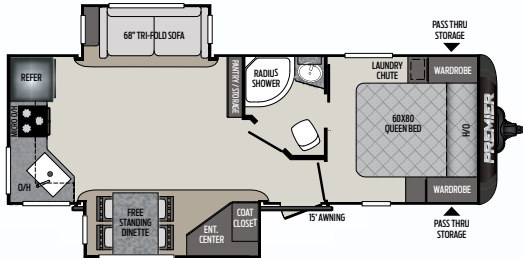
Upgraded fixture with foot flush



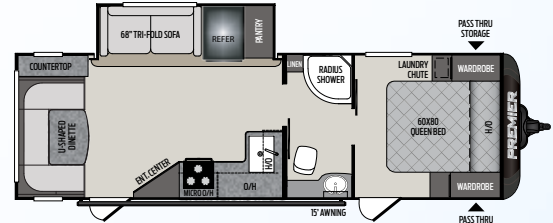
19FBPR | Rear bath, one slide
Weight: 4353 LBS. | Length: 24' 3"



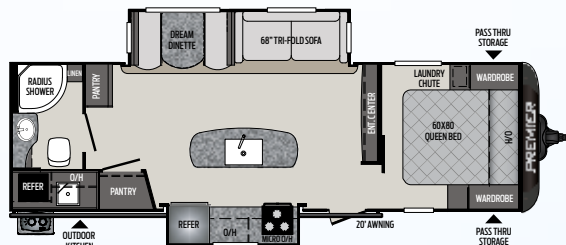
22RBPR | Rear bath, outside kitchen
Weight: 4972 LBS. | Length: 26' 11"



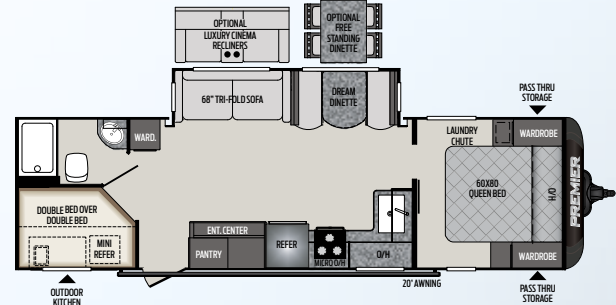
24RKPR | Rear kitchen, two slides
Weight: 13339 LBS. | Length: 39'



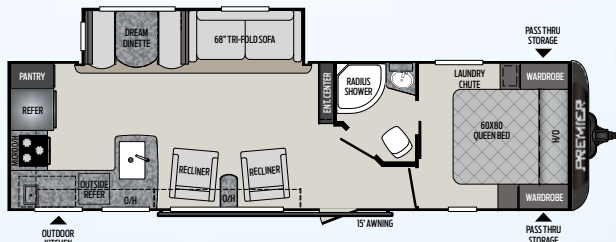
26UDPR | Rear dining, one slide
Weight: TBD | Length: TBD



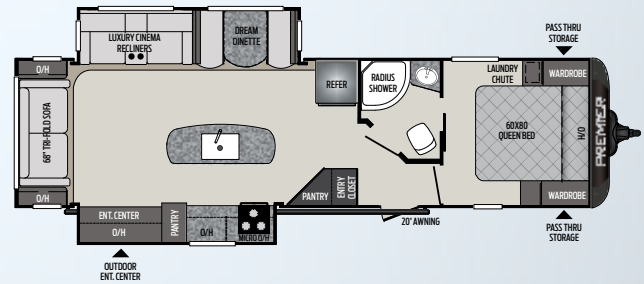
26RBPR | Rear bath, island kitchen
Weight: 6121 LBS. | Length: 32'



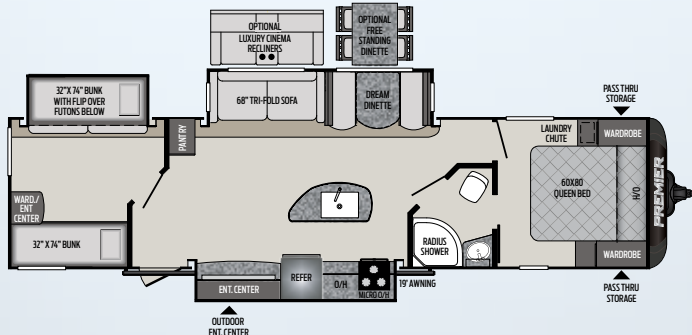
29BHPR | Bunk house, outside kitchen
Weight: 5985 LBS. | Length: 33' 4"



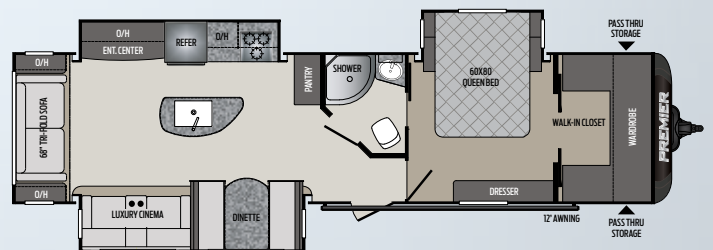
29RKPR | Rear kitchen, one slide
Weight: 6172 LBS. | Length: 34' 5"



30RIPR | Rear living room, island kitchen
Weight: 6870 LBS. | Length: 35' 11"



34BIPR | Bunk house, three slides
Weight: 7285 LBS. | Length: 38' 1"



34RIPR | Rear living room, bed slide
Weight: 7495 LBS. | Length: 38' 3"

CROSSFIRE TRAVEL TRAILERS

MODEL	WEIGHT	CARRYING CAPACITY	HITCH WEIGHT	FRESH WATER	WASTE WATER	GRAY WATER	LPG	LENGTH*	WIDTH	HEIGHT	AWNING
1650EX	3420	1280	470	43	30	30	40	19' 6"	8'	10' 5"	10'
1700BH	TBD	TBD	TBD	43	30	30	40	21' 4"	8'	10' 4"	10'
1750RK	3555	1145	400	43	30	60	40	20' 4"	8'	10' 5"	10'
1800RB	3310	1090	480	43	30	30	40	21' 4"	8'	10' 5"	10'
1900RD	3360	1340	490	43	30	30	40	21' 11"	8'	10' 5"	10'
2190EX	4480	1820	610	43	30	30	40	24' 11"	8'	10' 4"	15'
2200BH	4110	2190	425	43	30	30	40	25' 4"	8'	10' 4"	15'

BULLET TRAVEL TRAILERS

MODEL	WEIGHT	CARRYING CAPACITY	HITCH WEIGHT	FRESH WATER	WASTE WATER	GRAY WATER	LPG	LENGTH*	WIDTH	HEIGHT	AWNING
202BHSWE	4003	1997	420	43	30	30	40	24' 4"	8'	10' 10"	14'
210RUDWE	4318	2082	560	43	30	30	40	26' 5"	8'	10' 10"	15'
212RBSWE	TBD	TBD	TBD	43	30	30	40	26' 6"	8'	10' 10"	10'
243BHSWE	5088	1412	644	43	30	30	40	28' 10"	8'	10' 10"	19'
247BHSWE	5170	1830	578	43	30	30	40	29' 4"	8'	10' 10"	15'
248RKSWE	5286	1214	652	43	30	60	40	29' 10"	8'	10' 10"	15'
257RSSWE	5208	2092	576	43	30	60	40	29' 11"	8'	10' 10"	19'
261RBSWE	5544	2016	564	43	30	60	40	31' 0"	8'	10' 10"	19'
265RBSWE	5803	1797	600	43	30	60	40	30' 10"	8'	10' 10"	15'
269RLSWE	5606	1994	674	43	30	30	40	32' 5"	8'	10' 10"	15'
273BHSWE	5574	2026	648	43	30	30	40	31' 9"	8'	10' 10"	15'
287QBSWE	5930	1670	778	43	30	30	40	33' 10"	8'	10' 10"	15'
290BHSWE	TBD	TBD	TBD	43	30	60	40	33' 9"	8'	10' 8"	20'
308BHSWE	6602	1398	780	43	30	30	40	36' 0"	8'	10' 10"	19'

PREMIER TRAVEL TRAILERS

MODEL	WEIGHT	CARRYING CAPACITY	HITCH WEIGHT	FRESH WATER	WASTE WATER	GRAY WATER	LPG	LENGTH*	WIDTH	HEIGHT	AWNING
19FBPR	4353	2147	480	43	30	30	40	24' 3"	8'	11' 0"	12'
22RBPR	4972	1528	590	43	30	30	40	26' 11"	8'	11' 0"	15'
24RKPR	5563	1937	655	43	30	60	40	29' 6"	8'	11' 0"	15'
26UDPR	TBD	TBD	TBD	43	30	60	40	32' 0"	8'	11' 0"	19'
26RBPR	6121	1379	755	43	30	60	40	32' 0"	8'	11' 0"	20'
29BHPR	5985	1615	610	43	30	60	40	33' 4"	8'	11' 1"	20'
29RKPR	6172	1428	685	43	30	60	40	34' 5"	8'	11' 1"	15'
30RIPR	6870	1330	865	43	30	60	40	35' 11"	8'	11' 2"	20'
34BIPR	7285	2115	975	43	30	30	40	38' 1"	8'	11' 4"	19'
34RIPR	7495	1905	980	43	30	60	40	38' 3"	8'	11' 4"	12'

DISCLAIMER: Product information is as accurate as possible as of the date of publication of this brochure. All features, floor plans, and specifications in this brochure are subject to change without notice. Please also consult Keystone's web site at www.keystonerv.com for more current product information and specifications. Tow Vehicle Disclaimer. CAUTION: Owners of Keystone recreational vehicles are solely responsible for the selection and proper use of tow vehicles. All customers should consult with a motor vehicle manufacturer or their dealer concerning the purchase and use of suitable tow vehicles for Keystone products. Keystone disclaims any liability or damages suffered as a result of the selection, operation, use or misuse of a tow vehicle. KEYSTONE'S LIMITED WARRANTY DOES NOT COVER DAMAGE TO THE RECREATIONAL VEHICLE OR THE TOW VEHICLE AS A RESULT OF THE SELECTION, OPERATION, USE OR MISUSE OF THE TOW VEHICLE. *Length is defined as the distance from the centerline of hitch pin/coupler to rear bumper of trailer.

THERMAL PACKAGE (BULLET, PREMIER)*

- Ducted heat and enclosed heated underbelly
- 2" duct off of furnace to underbelly
- 30K BTU furnace and residential heat ducts

PREMIER PACKAGE (PREMIER)*

- Aerodynamic full fiberglass painted front cap
- 6' 11" Vaulted ceiling
- Power tongue jack
- 5.1 Electric stabilization system
- Max depth slides
- Led flush mounted puck lighting
- Upgraded exterior graphics package

STANDARDS AND OPTIONS

	CF	BL	PR
CONSTRUCTION STANDARDS			
Aggressive front profile for increased towability	●	●	●
Aluminum-framed side, front and rear walls	●	●	●
2" aluminum framed floor	●	●	●
Aluminum framed slideouts	●	●	●
One piece TPO roof	●	●	●
E-Z Lube Dexter® axles	●	●	●
Electric brake system (4 wheels)	●	●	●
Darco moisture barrier	●	●	●
In-frame fresh, gray, and black water tanks	●	●	●
7.5" - 10.5" Steel z-beam with full-length welded outrigger	●	●	●
¼" ABS enclosed underbelly	●	●	●
EXTERIOR CAMPING PACKAGE			
6-gallon gas/electric DSI quick recovery water heater	●	●	●
Outside speakers	●	●	●
(4) stabilizer jacks	●	●	●
TV antenna and cable/satellite hook-up	●	●	●
Electric awning	●	●	●
LED awning light	●	●	●
43" Wide-stance Dexter® E-Z Lube axles	●	●	●
Outside shower (hot and cold water)	●	●	●
Black tank flush		●	●
EXTERIOR			
Dual propane tanks with cover	●	●	●
In Frame Dual Battery Rack	●	●	●
Spare tire	●	●	●
Extended 4" down spouts	●	●	●
Oversized grab handle (main door)		●	●
Solid step entry steps			●
Magnetic storage door catches	●	●	●
Aluminum wheels		●	●
Power tongue jack		●	●
Oversized exterior pass thru storage with lighting		●	●
Fiberglass front cap		●	●
Entry door with friction hinges	●	●	●
Peg board in pass thru storage		●	●
LP quick connect		●	●
Solar prep		●	●
Outdoor kitchen with galvanized countertop (22RBPR, 29RKPR, 30RIPR, 31BHPR, 34BHPR)			●
Outdoor kitchen (2200BH, 243BHSWE, 257RSSWE, 261RBSWE, 287QBSWE, 290BHSWE, 308BHSWE)	●	●	
INTERIOR CAMPING PACKAGE			
13.5 BTU A/C	●	●	●
Night shades	●	●	●

CF Crossfire Travel Trailers
BL Bullet Travel Trailers
PR Premier Travel Trailers

	CF	BL	PR
Stainless steel microwave	●	●	●
Hardwood cabinet doors	●	●	●
Foot flush toilet	●	●	●
Porcelain toilet		●	●
Tub surround with shelves	●	●	●
Full extension drawer glides	●	●	●
Stainless steel sink		●	●
Oversized double basin sink with High rise faucet	●		
Stainless steel double door refrigerator	6cu.ft.	6cu.ft.	8cu.ft.
32" AND 42" LED TV (FLOOR PLAN SPECIFIC)		●	●
Flush-mount 3 burner range with glass cover		●	●
2 burner cooktop	●		
INTERIOR			
Self-edge laminated kitchen countertops	●	●	
Solid surface kitchen countertops			●
Dream dinette		●	●
68" tri-fold sofa		●	●
Residential style furniture	●	●	●
Water heater-by-pass for winterization	●	●	●
Interior LED lights	●	●	●
Low profile range hood	●	●	●
17" Oven		●	●
Back Splash behind Range (na select floorplans)		●	●
Stor-Mor™ dinette			●
Retractable Kitchen Faucet			●
Four Extra Large Windows in Superslides		●	●
BATHROOM			
Power vent fan	●	●	●
Solid wood medicine cabinet	●	●	●
Linen storage	●	●	●
MASTER BEDROOM			
Upgraded Foam Mattress	●	●	●
Residential Size Queen Bed		●	●
Dual 110V Outlets	●	●	●
Mirrored Wardrobes	●	●	●
Individual LED Reading Lights		●	●
Hardwood Entry Doors		●	●
Laundry Chute		●	●
TV Hookup Prep		●	●
Dual USB Charging Port		●	●
OPTIONS			
Bumper-mounted Aussie grill		●	●
15K A/C		●	●
Free-standing dinette			●

BUILT FOR THE LONG HAUL



PRINT 8.2018



**Keystone RV
Company**