

SHORE PARK

12' SERIES FLOOR PLANS

BRINGING AMERICA HOME * BRINGING AMERICA FUN

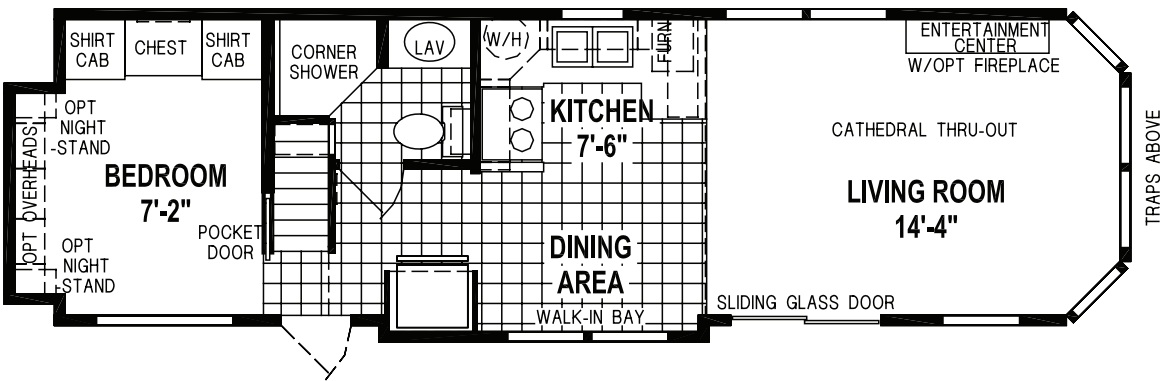
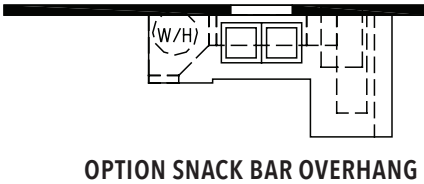
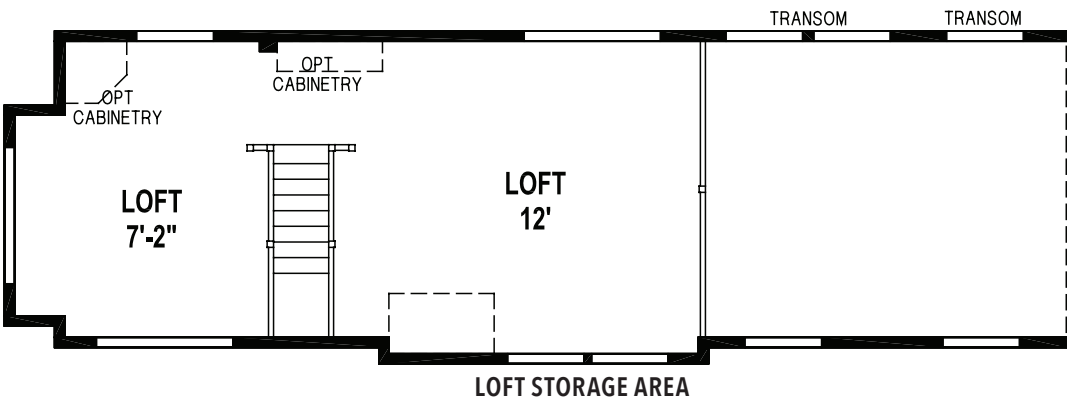
SHORE PARK **HOME**
IS WHERE YOU
PARK IT

SINCE 1951

LANCASTER, WISCONSIN

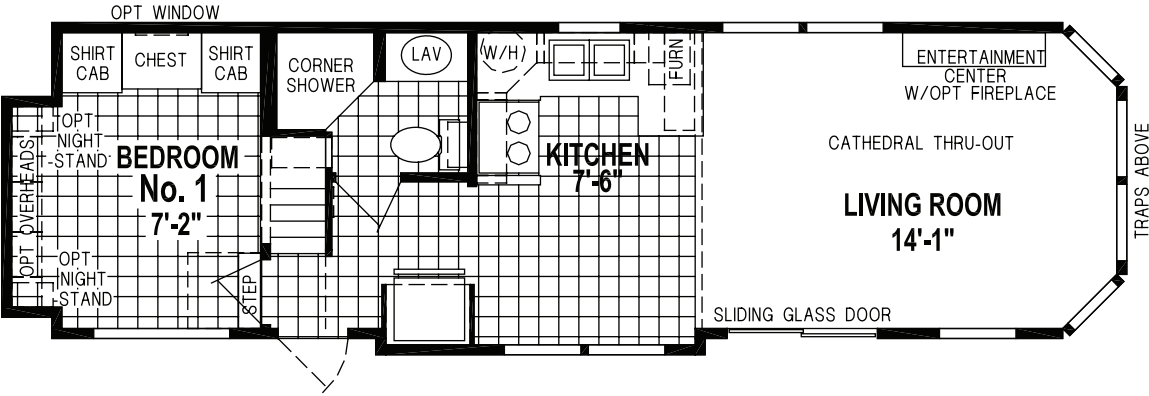
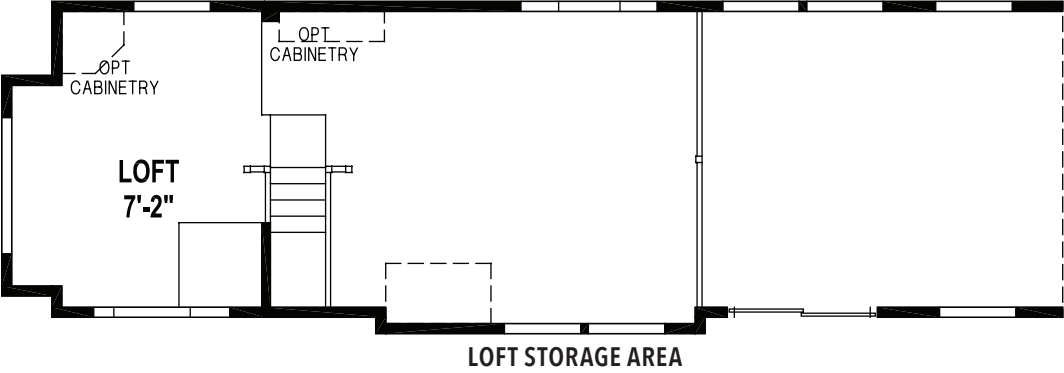
12' SERIES

Skyline is pleased to introduce the Shore Park series of park models. Ideal for campgrounds, retirement communities, or that perfect little spot by the lake, Shore Park features can include the a spacious residential bath, custom painted drywall interior, real wood trim and innovative ceiling finishes. Manufactured in Lancaster, Wisconsin and backed by over 65 years of manufacturing experience, a 15-month warranty and stellar customer service, the only thing you have to worry about is where you're going to park them.



1935CTP/3612 • 1 BEDROOM • CATHEDRAL THRU-OUT

12' SERIES

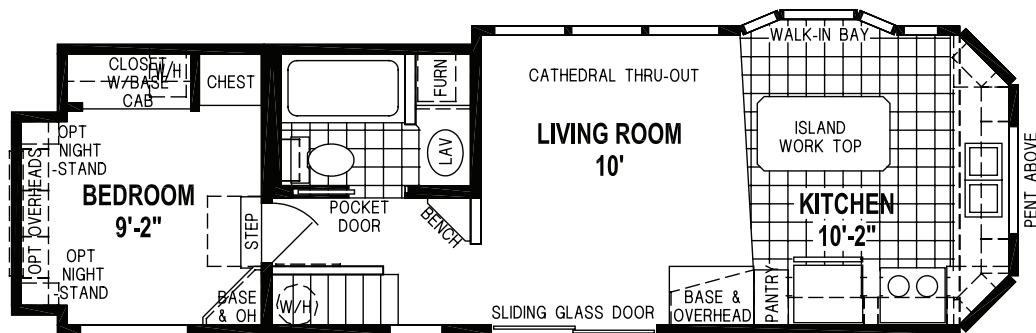
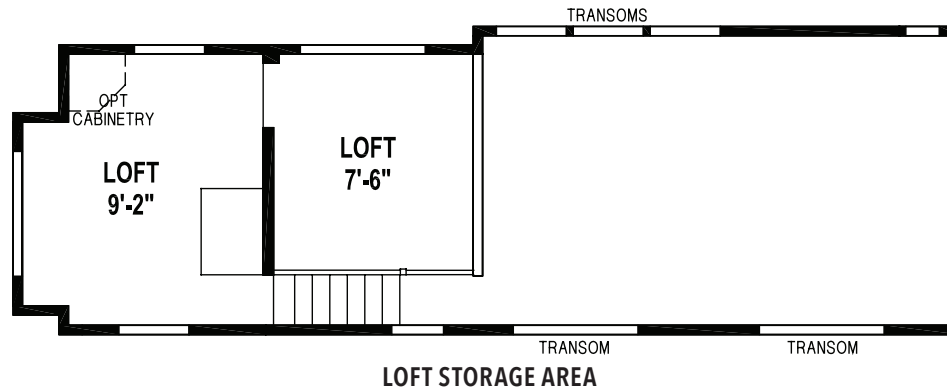


1935CTR/3612 • 1 BEDROOM • DROP LOFT • CATHEDRAL THRU-OUT

12' SERIES



12' SERIES



1941CTO/34'-10"12 • 1 BEDROOM • DROP LOFT • CATHEDRAL THRU-OUT



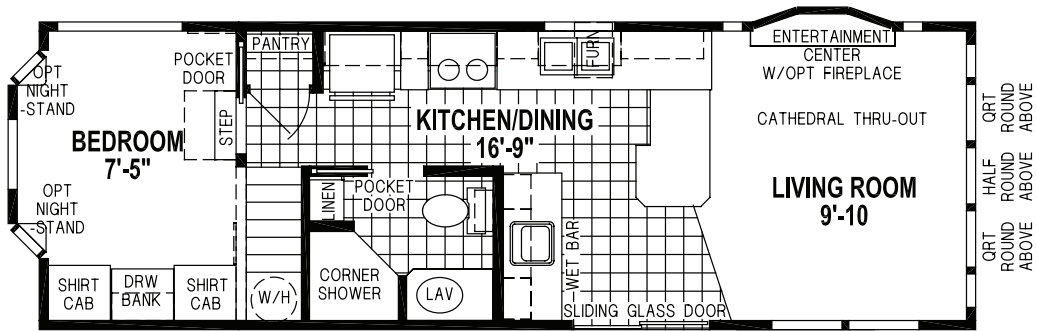
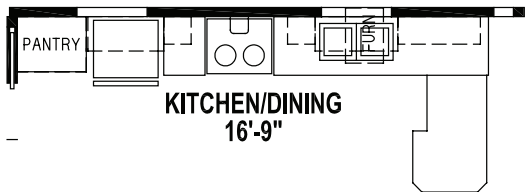
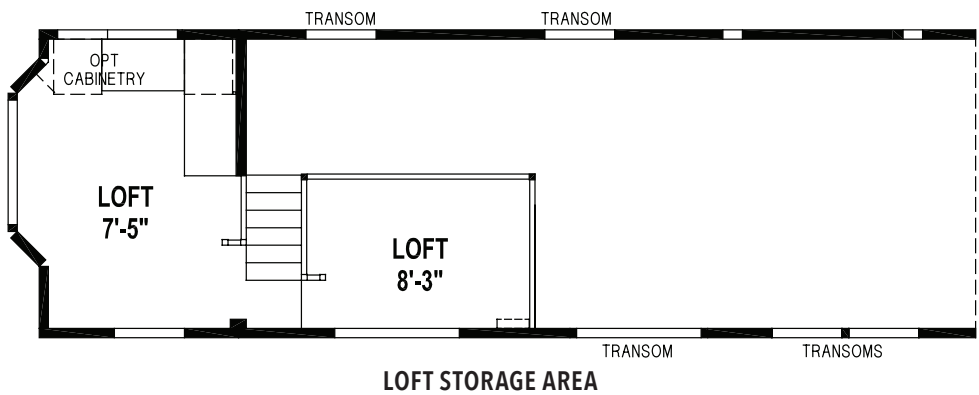
All Skyline park models are covered by our no-nonsense 15-month warranty, the very best in the industry. It's our way of showing our customers how much we believe in the quality we build into every Skyline park model. Our warranty gives new park model owners the assurance that comes from working with a company with more than six decades of building.

12' SERIES



1955CTP/3412 • 1 BEDROOM • DROP LOFT • CATHEDRAL THRU-OUT

12' SERIES



1955CTQ/3412 • 1 BEDROOM • DROP LOFT • CATHEDRAL THRU-OUT

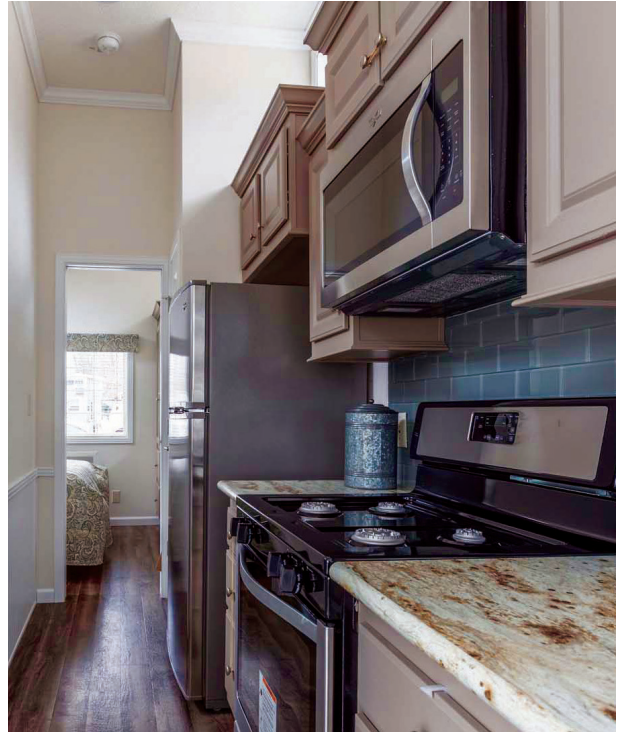


12' SERIES

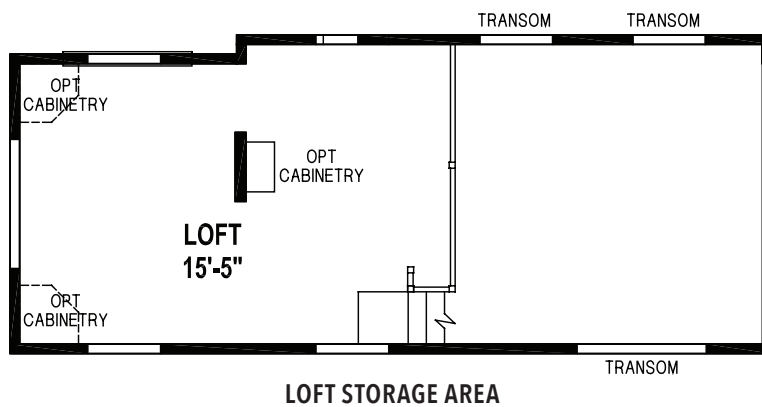
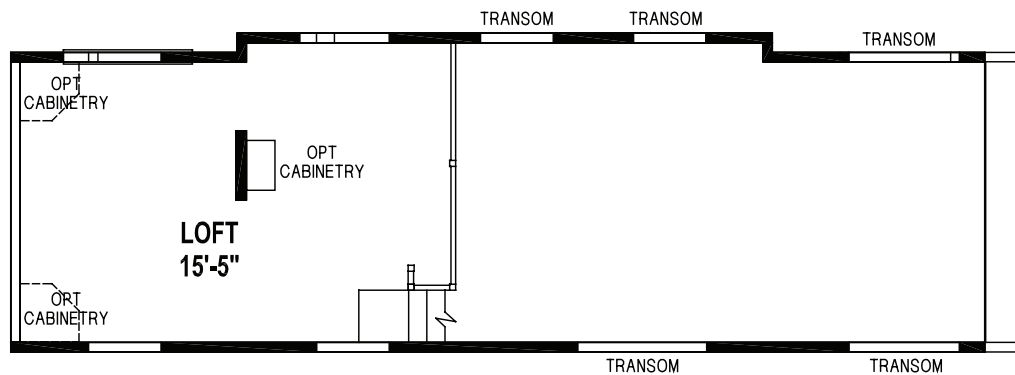
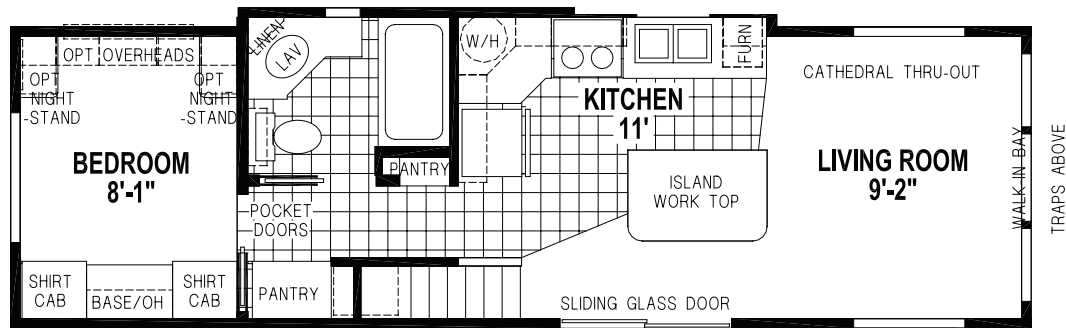
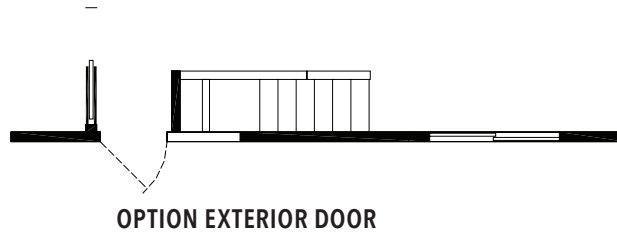
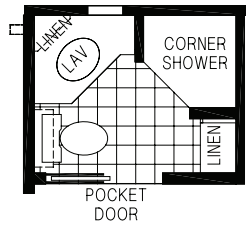




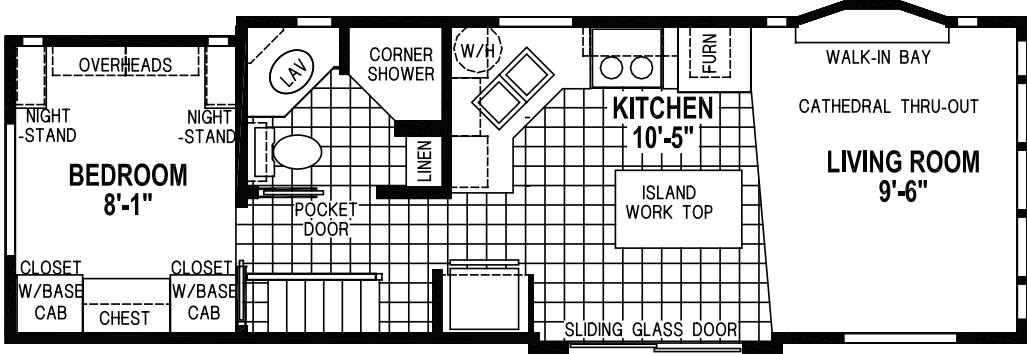
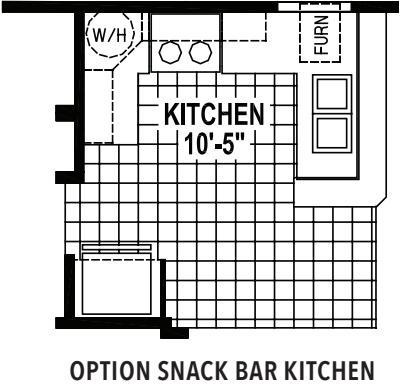
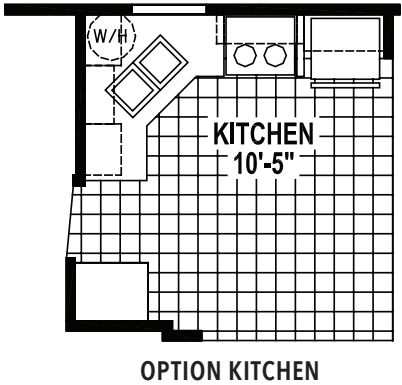
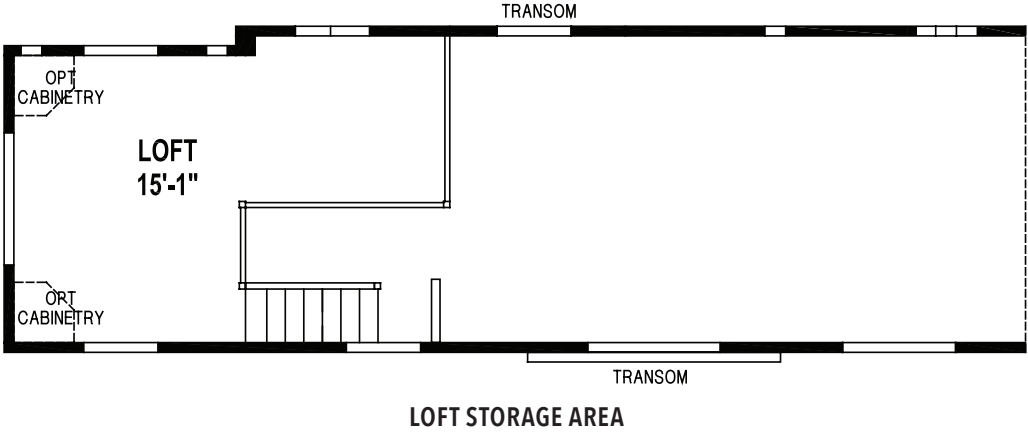
12' SERIES



12' SERIES

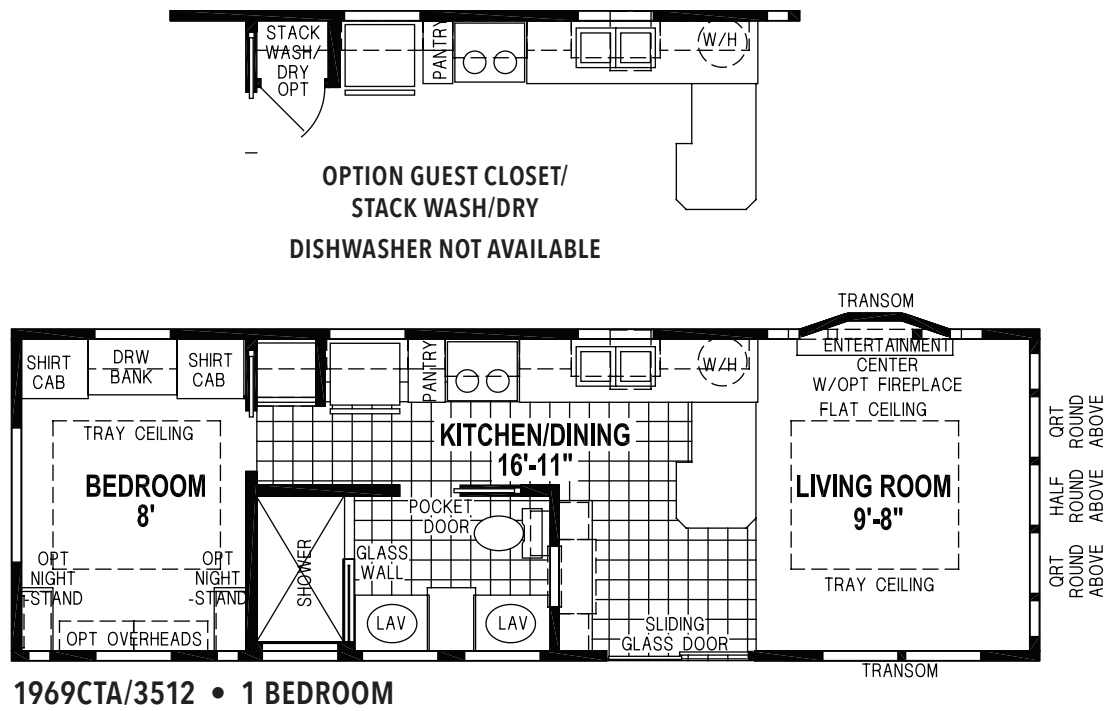


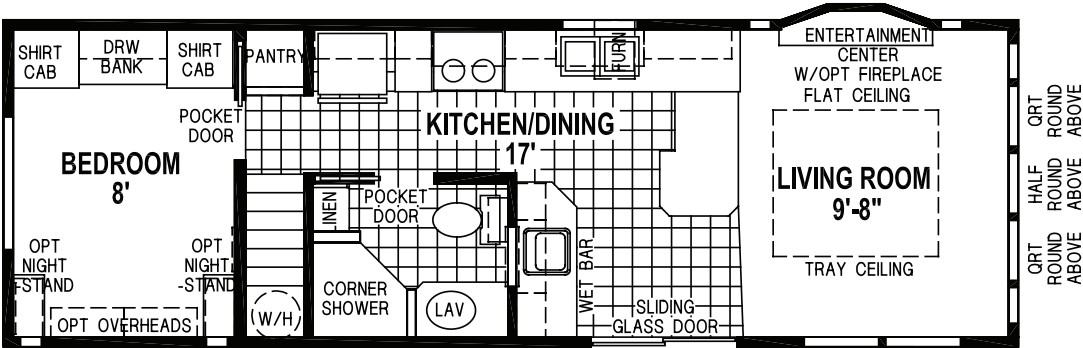
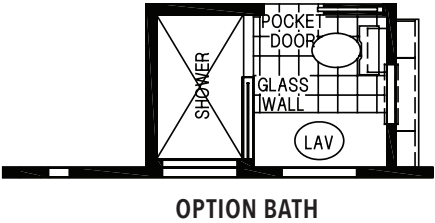
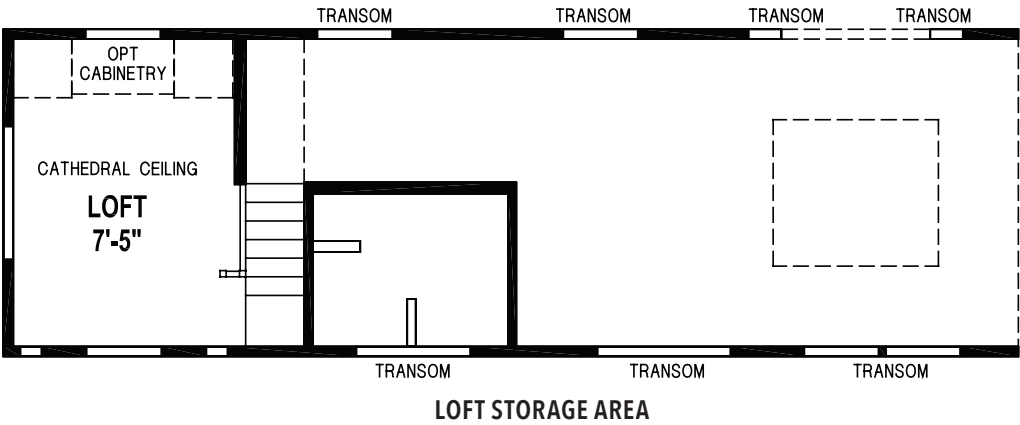
12' SERIES



1966CTP/3512 • 1 BEDROOM • CATHEDRAL THRU-OUT

12' SERIES

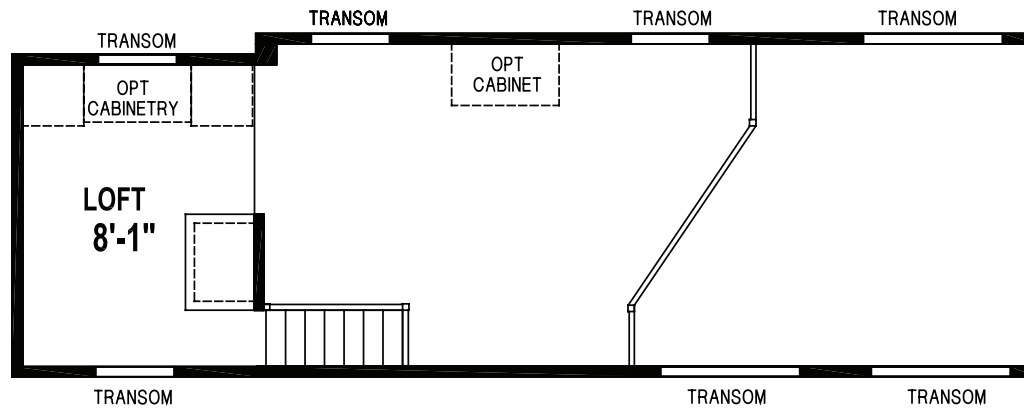




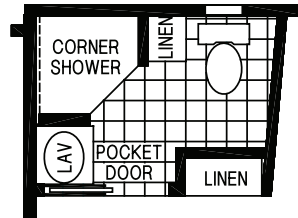
1969CTP/3512 • 1 BEDROOM



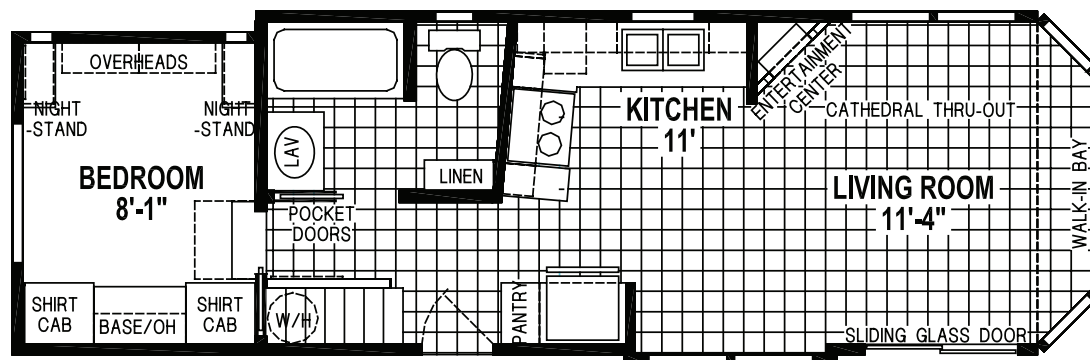
12' SERIES



LOFT STORAGE AREA



OPTION BATH



1974CTP/3612 • 1 BEDROOM • DROP LOFT • CATHEDRAL THRU-OUT



SHORE PARK

12' SERIES PARK MODELS

STANDARD FEATURES

LIVING AREAS

- Upgrade Carpet
- Cornice Valance with Wood Blinds
- Large 2- $\frac{3}{4}$ " Cove at Ceiling
- TV Jack (Exterior)
- Chandelier Dining Light
- 52" Paddle Fan

KITCHEN

- Hardwood Oak or Cherry Cabinet Doors and Face Frames
- Drawer Over Door Base Cabinet Construction
- Modular Cabinet System with Adjustable Shelves
- Two Shelves in Base Cabinet
- Stainless Steel Sink
- Single Lever Faucet at Sink with Sprayer
- 16 Cu. Ft. Double Door Frost-Free Refrigerator
- 30" Deluxe Gas Range
- Spacesaver Microwave Range Hood
- Cornice Valance with Wood Blinds
- Large Cove Above Cabinets
- Cabinet Above Refrigerator
- Deluxe Cabinet Door and Drawer Hardware
- 6" Ceramic Tile Backsplash

BATHROOM

- Hardwood Oak or Cherry Cabinet Doors and Face Frames
- 6" Ceramic Tile Backsplash at Lav
- Fiberglass Tub with Full Surround (most models)
- Single Lever Faucet at Lav
- Privacy Locks
- Towel Bar and Paper Holder
- Power Vent Fan with Light – Fan Only at Loft Models
- Elongated China Commodes
- China Sink with Overflow and Pop-Up Drain

BEDROOM

- Upgrade Carpet
- Cornice Valance with Wood Blinds
- Mirrored Wardrobe Doors with Drawers Below (per floor plan)
- Ventilated Wire Shelving
- TV Jack

ADDITIONAL FEATURES

- ANSI 119.5 Approved
- Cathedral Ceiling Throughout
- Detachable Hitch
- Shingle Roof with Ridge Vent
- 25-Year Shingles
- Vinyl Lap Siding
- Deadbolt at Rear Door
- Sliding Glass Door (Insulated)
- Exterior Light at All Exterior Doors
- Single Hung Vinyl Windows
- Egress Windows in Bedrooms
- Window Grids
- Exterior GFI Protected Receptacle
- Textured Ceiling
- LED Lighting Throughout
- Wire for Paddle Fan
- Carpet Pad with Tack Strip
- Gas Furnace
- 20 Gallon Electric Water Heater
- PEX Water Lines
- Iron Gas Piping with Shut-off Valves
- Water Shut-off Valves Throughout
- 6-Panel Interior Passage Doors (per floor plan)
- Pre-Finished Door Jambs
- Insulation: R-22 Roof, R-11 Floor and R-11 Walls
The Higher the "R-Value" the Greater the Insulation Power.
- 7'-6" Sidewall Height (per floor plan)
- 2 x 4 Sidewall, 16" O. C.
- 2 x 6 Floor Joists, 16" O. C.
- CO₂/Smoke Detector with Battery Backup and False Alarm Control
- Fiberglass Insulated Heating Runs
- Toe Kick Registers in Kitchen and Bath
- LP Detector
- Fire Extinguisher



WWW.SKYLINEPM.COM

For your comfort and safety, Skyline park model designs are approved and inspected for conformance to RPTIA standards. Overall length does not include approximately four foot hitch. Room sizes are measured from floor ends and wall centers.

Because of progressive product improvement, all prices and specifications are subject to change without prior notice or obligation to Skyline Corporation. Your Retailer, an independent contractor, who is not an agent of Skyline Corporation, is the party responsible for your purchase contract and any additions, deletions, alterations, or attachments made to or in your park model.



YOUR LOCAL SKYLINE RETAILER:



SKY01-04-18-9694, 571-Lancaster, Printed in the U.S.A.

