

Springdale

EASTERN

TRAVEL TRAILERS

FIFTH WHEELS

TOY HAULERS

SINGLE-AXLE MINIS

# SAY HELLO

TO YOUR NEXT ADVENTURE



FALL PREVIEW



# The ultimate ownership experience.

The goal of Keystone RV Company is to surprise and delight our owners at each and every touchpoint. We're happy when our campers are happy, and we are committed to providing the very best ownership experience in the industry.



## 1 EASIER SHOPPING.

At Keystone, we make choosing an RV as easy as finding the Big Dipper on a dark summer night. With comprehensive online product information, Key Connect™ product advisors, and an unparalleled dealer network we will help you select the perfect RV for your family's adventure.

## 2 INNOVATIVE THINKING.

The road's a nicer place when you have the industry's smartest features behind you. Keystone leads the pack in patented innovations that make our RVs safer, more comfortable, and easier to operate.

## 3 LONG HAUL QUALITY.

To keep you on the road, there are certain things we just won't build a Keystone RV without. Game-changing features like our Unified Wiring Standard, Tru-Fit™ five-point slide construction, and no-fail Tuf-Lok™ A/C duct joiners combined with exhaustive testing and inspections are some of the reasons why Keystone is able to offer our owners the industry's best 3-year limited structural warranty.

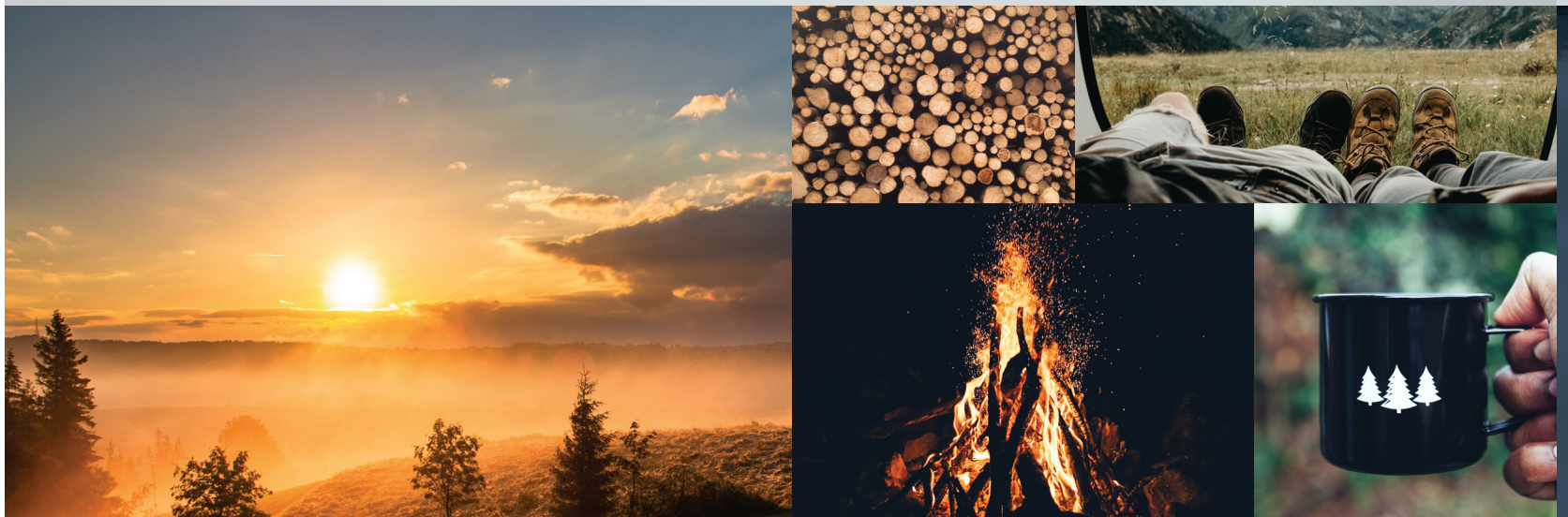
## 4 WORRY-FREE CUSTOMER SERVICE.

Wherever the road takes you, you're never too far from an authorized Keystone service center. We also offer live service assistance, ultra-fast parts shipping, online maintenance tips and tricks, and a single-point warranty claims policy. *That's* peace of mind.

## 5 KEYSTONE NATION.

When you choose Keystone, you become one of the largest camping families in the country. We're Keystone Nation. A friendly community where people share photos, travel tips and amazing stories – all in the spirit of camaraderie and adventure. Come join us.

Experience the Springdale lifestyle by visiting [#keystonespringdale](#)



# SPRINGDALE



SINGLE-AXLES | TRAVEL TRAILERS | TOY HAULERS | FIFTH WHEELS

## Get up and get going with Springdale's 20th Anniversary Edition.

Springdale has introduced more families to the camping lifestyle than any other Keystone brand. Why? Because Springdale offers more standard features, options and amenities than you will find in other conventionally built RV brands. Combined with Keystone's quality construction and customer service, Springdale will make you wonder what you were waiting for.

Springdale's exciting 20th anniversary models feature a fresh new exterior styling, modern interior design touches, and the introduction of the Tailgator toyhaulers to our full lineup of fifth wheels, travel trailers and minis.

For more information, please visit [keystonerv.com/springdale](http://keystonerv.com/springdale)

SPRINGDALE | 03



more product detail at  
[www.keystonerv.com/springdale](http://www.keystonerv.com/springdale)

# Springdale

## TRAVEL TRAILERS

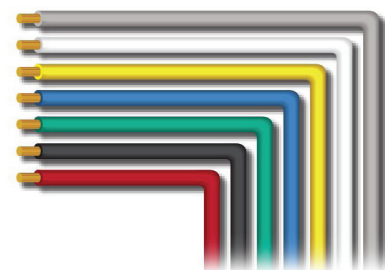
- Thermofoil pressed countertops
- Arched ceilings—82" height across the line-up
- Furrion® oven with glass cooktop and LED accent lights
- 6 cu. ft. gas/electric refrigerator
- Jensen® audio system with DVD/CD/MP3/Bluetooth
- Stainless steel microwave
- Hidden laundry chute
- Convenience center for slide rooms, lights, tank monitoring
- Single-basin undermount sink
- Cable TV hookups in all bedrooms
- Reversible bedspread
- Decorative backsplash
- Sliding windows in slide rooms
- 30,000 BTU furnace
- Power tongue jack standard
- Black tank flush
- Outdoor TV prep and bracket
- Fully walkable roof
- Quick release gas line
- Backup camera prep
- Triple entry steps
- Exterior stereo speakers
- Tinted safety glass windows
- 24' x 8' Dyna Span® floor decking
- Triple-seal slide room system
- 3-year fully transferable limited structural warranty



**EXCLUSIVE Tru-fit™ slide construction**  
 A more durable slide room design that minimizes functional motor and structural stress, resists leaking



**In-floor straight line heat duct system**  
 Distributes heat evenly for greater comfort



**EXCLUSIVE color-coded wiring**  
 Easy-to-trace circuits simplifies and expedites electrical system troubleshooting



**EXCLUSIVE HitchVision™**  
 Simplifies hitch hookup with "no looking back" convenience (FW only)



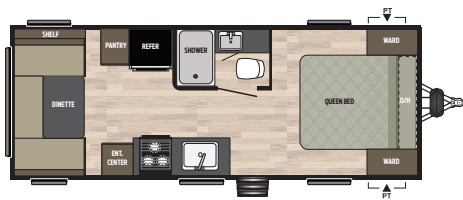
**Arched**  
 82" height across the lineup



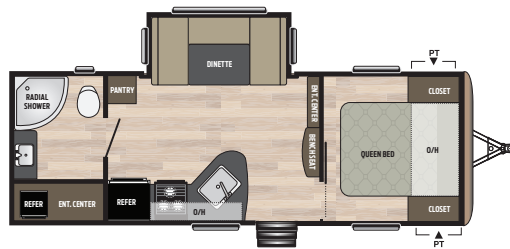
**Power tongue jack**  
 Making it fast and easy to setup your campsite



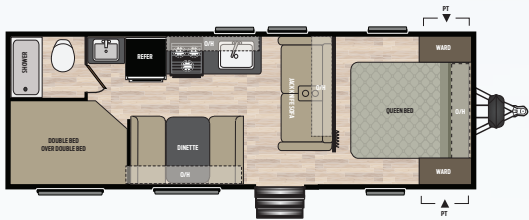
**New Furrion® glass cooktop**  
 Glass 2 in 1 cooktop w/ oven and LED lighting



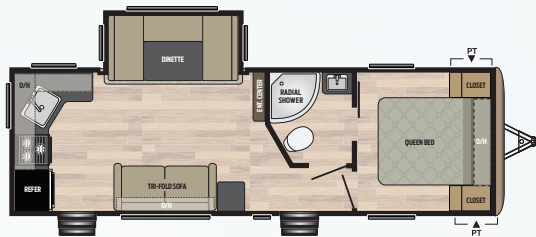
**202RD** | Rear dinette, queen walk-around bed  
Weight: 4605 LBS. | Length: 24' 10"



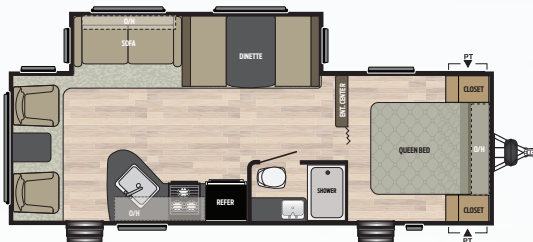
**235RB** | Large rear bathroom, lightweight, large outside kitchen  
Weight: 6095 LBS. | Length: 27' 5"



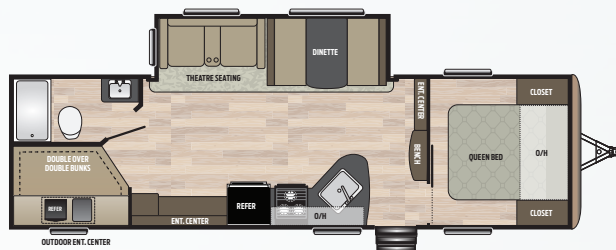
**260BH** | #1 selling bunkhouse, private master bedroom  
Weight: 4941 LBS. | Length: 28' 10"



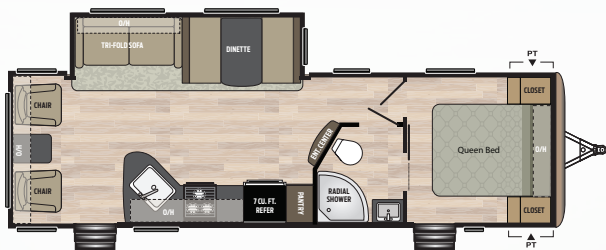
**262RK** | Rear kitchen, dual entrance, side-aisle bath  
Weight: 6362 LBS. | Length: 30' 2"



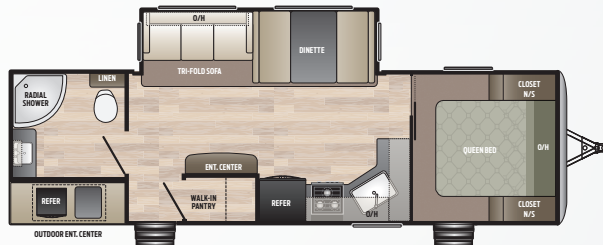
**266RL** | Rear lounge, built for entertaining  
Weight: 6094 LBS. | Length: 28' 11"



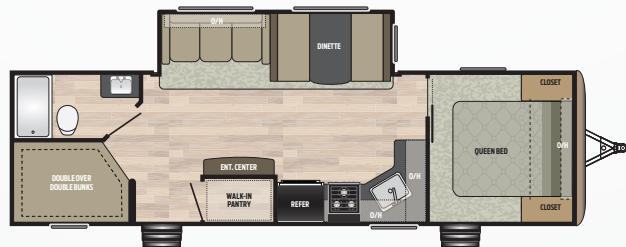
**270BH** | Double over double bunkhouse, 40" TV in theatre seating  
Weight: 6907 LBS. | Length: 32' 11"



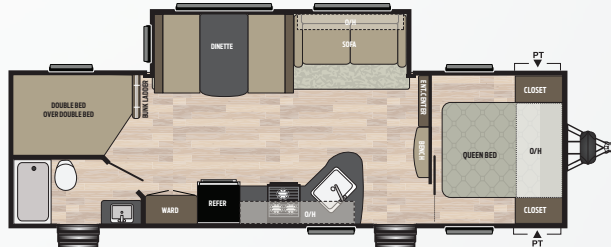
**271RL** | Rear living room, large kitchen packed with storage  
Weight: 6981 LBS. | Length: 31' 10"



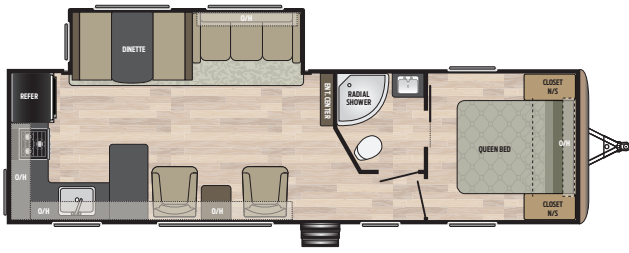
**274RB** | Rear bath focus, large walk-in pantry, outside kitchen  
Weight: 7175 LBS. | Length: 31' 7"



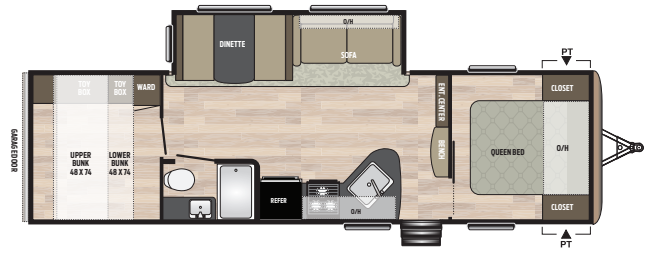
**280BH** | Bunkhouse, entertainment-focused, walk-in pantry, outside kitchen  
Weight: 7206 LBS. | Length: 32' 11"



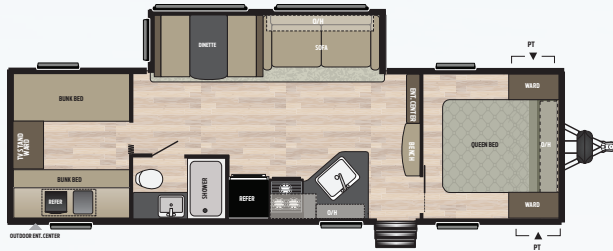
**282BH** | Bunkhouse, outside entrance to bath, private master bedroom  
Weight: 6625 LBS. | Length: 32' 11"



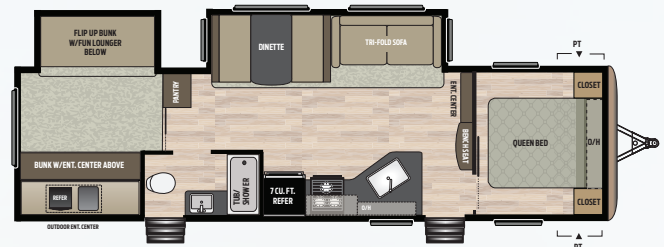
**293RK** | Rear kitchen, huge countertop, amazing lounge area  
Weight: 6721 LBS. | Length: 33' 4"



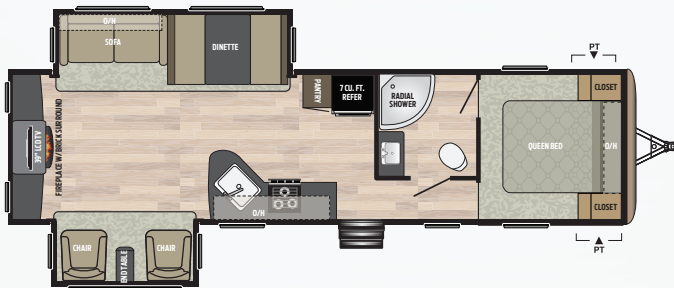
**296BH** | Rear garage storage, private bunkhouse, double-over-double  
Weight: 7085 LBS. | Length: 33' 2"



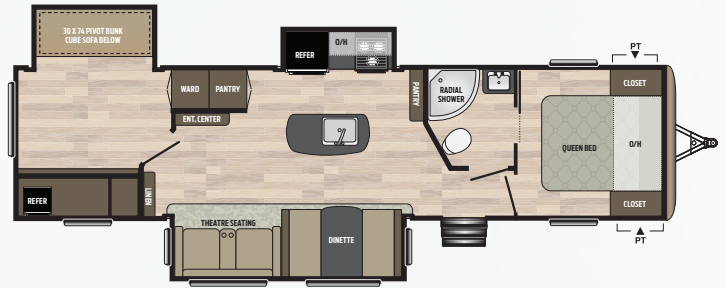
**298BH** | Private bunkroom, private master bedroom, outside kitchen  
Weight: 6860 LBS. | Length: 32' 8"



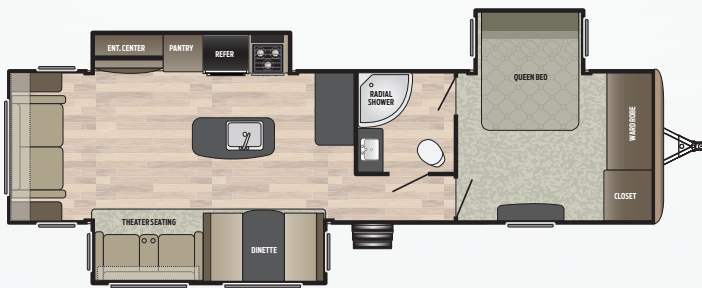
**303BH** | Private bunkroom, featuring gaming chairs, dual-entry, private master  
Weight: 8060 LBS. | Length: 35' 0"



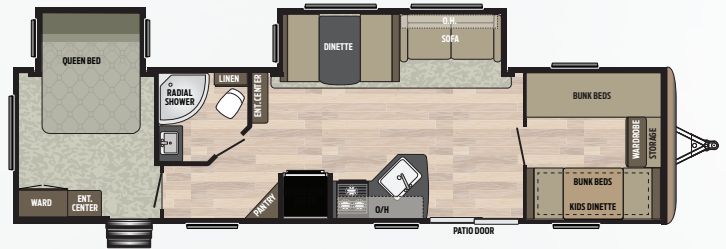
**311RE** | Entertainment-focused, 2 slides, brick fireplace, master suite  
Weight: 8409 LBS. | Length: 35' 7"



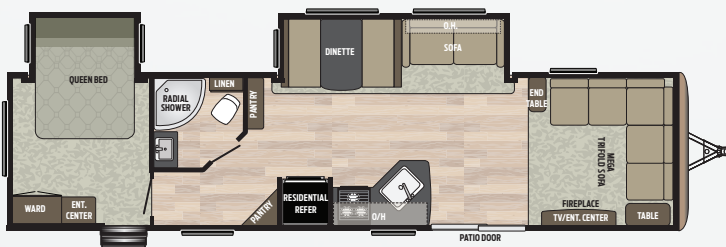
**332RB** | Master suite, theatre seating, private bunkroom  
Weight: 9274 LBS. | Length: 37' 7"



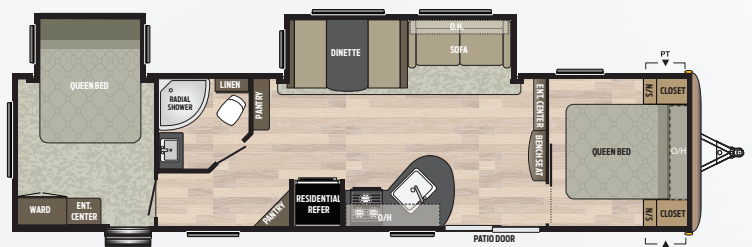
**333RE** | Rear entertainment, 3 slides (inc. master bedroom), extreme kitchen  
Weight: 9175 LBS. | Length: 37' 3"



**38BH** | Built for comfort, sleeps up to 10, glass patio door, private bedrooms  
Weight: 8675 LBS. | Length: 38' 11"



**38FL** | Amazing front lounge, fireplace with brick, entertainment-focused  
Weight: 8576 LBS. | Length: 38' 11"



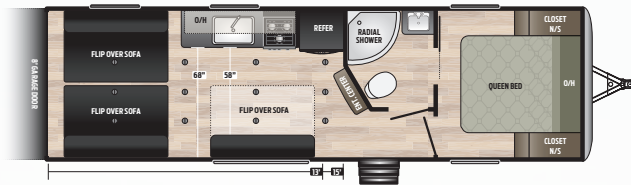
**38FQ** | Front queen, two-slide w/ deluxe kitchen & Springdale mud room  
Weight: 8655 LBS. | Length: 38' 11"



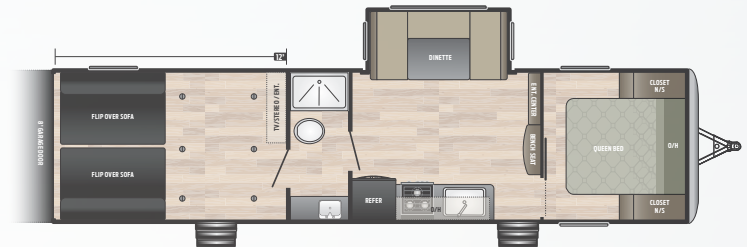
more product detail at  
[www.keystonerv.com/springdale](http://www.keystonerv.com/springdale)

## Springdale | TAILGATOR TOY HAULERS

- Springdale re-launches the original Keystone toy hauler brand
- Thermofoil pressed countertops
- Skylight over shower and tub
- Arched ceilings
- Larger garage floor space
- Power tongue jack
- Jensen® stereo and speaker system
- 7 cu. ft. stainless steel refrigerator
- Springdale's EXCLUSIVE "do-more" dinette table
- Glass accent overhead cabinet doors in kitchen
- Textured backsplash
- LED interior lighting
- Furrion® oven with glass cooktop & LED accent lights
- Black night shades
- Smooth metal front with diamond plate rock guard
- Fully walkable roof
- Built for tailgating and hauling toys
- Exterior TV hookups
- Outside shower
- Laundry chute
- 3-year, fully transferable limited structural warranty



**27TH** | New toy hauler, featuring a 13' garage, master suite  
Weight: 6025 LBS. | Length: 31' 4"



**32TH** | Toy hauler, enclosed 12' garage, dinette slide room  
Weight: TBD LBS. | Length: TBD

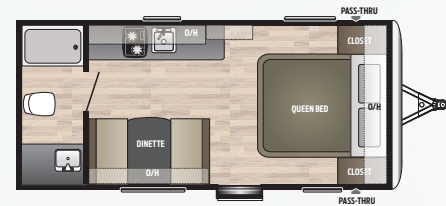


more product detail at  
[www.keystonerv.com/springdale](http://www.keystonerv.com/springdale)

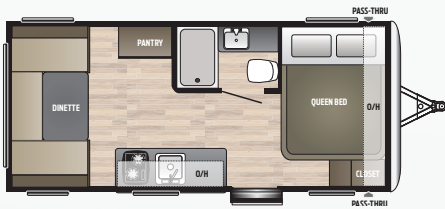
# Springdale

## SINGLE-AXLE MINI TRAVEL TRAILERS

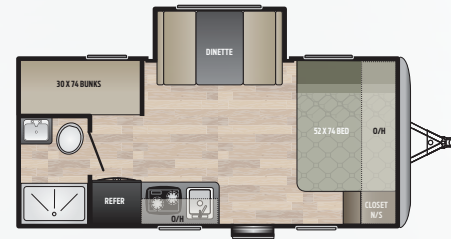
- 8' wide body
- Solid wood cabinet doors
- 78" interior height
- LED interior lights
- Gas-strutted entry door
- Front diamond plate rock guard
- Front and rear stabilizer jacks
- Exterior speakers
- AM/FM stereo with Bluetooth
- 6-gallon gas/electric water heater
- 2-burner cooktop
- Reversible bedspread
- Seamless floor decking
- 20 lb. propane tank
- 3-year, fully transferable limited structural warranty



**1700FQ** | Walk around front queen bed, huge bathroom  
 Weight: 3237 LBS. | Length: 21' 5"



**1750RD** | Rear dinette, amazing view, incredible countertop space  
 Weight: 3309 LBS. | Length: 21' 5"



**1760BH** | Dinette slide room, 13.5 A/C, 6 cu. ft. refrigerator  
 Weight: 3735 LBS. | Length: 21' 5"



**1790FQ** | Dinette slide room, large bathroom, couple's coach  
 Weight: 3720 LBS. | Length: 21' 5"



**1800BH** | #1 selling floorplan, bunkhouse, outside speakers  
 Weight: 3295 LBS. | Length: 21' 5"



# Springdale

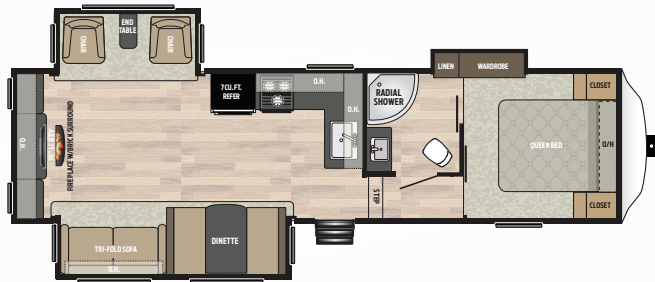
## SINGLE-AXLE & FIFTH WHEEL FLOOR PLANS

### Springdale

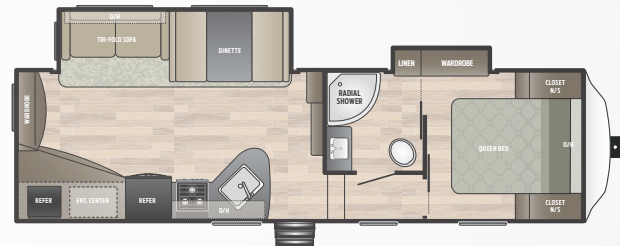
#### FIFTH WHEELS

- Affordable fifth wheel luxury
- Thermofoil pressed countertops
- Laminated fiberglass sidewalls
- 50 AMP service
- Hardwood cabinet doors
- Wardrobe slide room
- Furrion® oven with glass cooktop and LED accent lights
- Convenience center for slide rooms, lights and tank monitoring
- Free-standing table and chairs, optional
- Front cap
- Backup camera prep
- 40" television
- Fully walkable roof

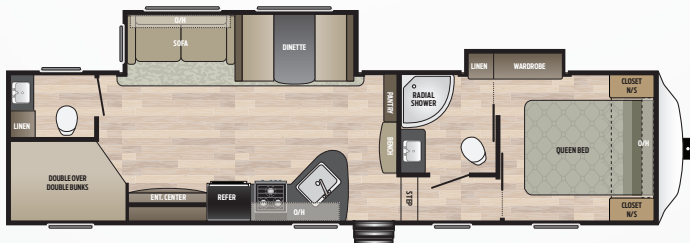
- Exterior speakers
- Triple-seal slide systems
- Fully enclosed and heated underbelly
- 30 lb. LP tanks
- Number/color-coded wiring system for easy troubleshooting and repair
- Dexter® E-Zube® axles
- Decorative backsplash
- Reversible bedspread
- 30,000 BTU furnace
- Stainless steel appliances
- Sliding windows in slide rooms
- Triple entry steps
- 3-year, fully transferable limited structural warranty



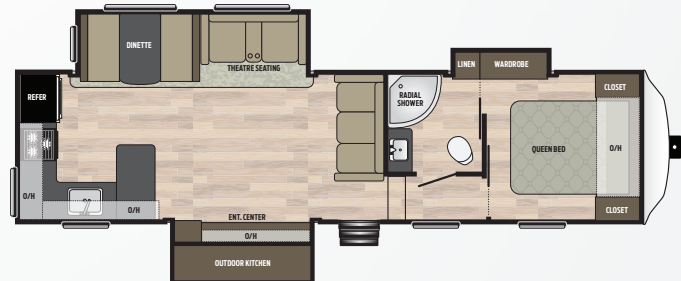
**253FWRE** 3 slides, rear entertainment, fireplace, recliners  
Weight: 8591 LBS. | Length: 32' 10"



**272FWRE** 2 slides, rear entertainment, outside kitchen  
Weight: TBD LBS. | Length: 30' 2"



**300FWBH** Bunkhouse, one and a half bath, wardrobe slide, outside kitchen  
Weight: 8670 LBS. | Length: 34' 10"



**302FWRK** Rear kitchen, tri-fold sofa and theatre seating, outside kitchen  
Weight: 8911 LBS. | Length: 33' 9"

### TRAVEL TRAILERS

MODEL	WEIGHT	CARRYING CAPACITY	HITCH WEIGHT	FRESH WATER	WASTE WATER	GRAY WATER	LPG	LENGTH*	HEIGHT
202RD	4605	2108	565	52	30	30	40	24' 10"	10' 11"
235RB	6095	1700	795	52	39	78	60	27' 5"	11' 3"
260BH	4941	2569	510	52	39	30	40	28' 10"	10' 6"
262RK	6362	1388	750	52	30	78	60	30' 2"	11' 3"
266RL	6094	1551	645	52	39	39	40	28' 11"	10' 11"
270BH	6907	2678	785	52	39	60	60	32' 11"	11' 3"
271RL	6981	2719	935	52	39	30	60	31' 10"	11' 3"
274RB	7175	2345	720	52	39	69	60	31' 7"	11' 3"
280BH	7206	2394	805	52	39	60	60	32' 11"	11' 3"
282BH	6625	1975	690	52	39	69	40	32' 1"	11' 3"
293RK	6721	2079	830	52	30	69	40	33' 4"	10' 11"
296BH	7085	3018	920	52	30	39	40	33' 2"	10' 11"
298BH	6860	3013	685	52	30	39	40	32' 8"	10' 11"
303BH	8060	1710	970	52	39	39	60	35' 0"	11' 4"
311RE	8409	1351	960	52	39	78	60	35' 7"	10' 11"
332RB	9274	2101	1215	52	30	78	60	37' 7"	10' 11"
333RE	9175	2175	1155	52	39	39	60	37' 3"	10' 11"
38BH	8675	2480	995	56	39	69	60	38' 11"	11' 4"
38FL	8576	2529	945	56	39	69	60	38' 11"	11' 4"
38FQ	8655	2480	975	56	39	69	60	38' 11"	11' 4"

### FIFTH WHEELS

MODEL	WEIGHT	CARRYING CAPACITY	HITCH WEIGHT	FRESH WATER	WASTE WATER	GRAY WATER	LPG	LENGTH*	HEIGHT
253FWRE	8591	1709	1500	52	39	39	60	32' 10"	11' 10"
272FWRE	TBD	TBD	TBD	52	78	39	60	30' 2"	11' 10"
300FWBH	8670	1680	1555	52	69	78	60	34' 10"	11' 4"
302FWRK	8911	1409	1520	52	39	78	60	33' 9"	11' 4"

### TOY HAULERS & SINGLE AXLES

MODEL	WEIGHT	CARRYING CAPACITY	HITCH	FRESH WATER	WASTE WATER	GRAY WATER	LPG	LENGTH*	HEIGHT
27TH	6025	3765	995	52	30	39	60	31' 4"	11' 3"
32TH	TBD	TBD	TBD	TBD	TBD	TBD	TBD	TBD	TBD
1700FQ	3237	1203	480	27	30	32	20	21' 5"	10' 2"
1750RD	3309	1091	520	27	30	30	20	21' 5"	10' 2"
1760BH	3735	765	520	27	30	30	20	21' 5"	10' 2"
1790FQ	3720	760	480	27	32	30	20	21' 5"	10' 2"
1800BH	3295	1105	485	27	30	30	20	21' 5"	10' 2"

DISCLAIMER: Product information is as accurate as possible as of the date of publication of this brochure. All features, floor plans, and specifications in this brochure are subject to change without notice. Please also consult Keystone's web site at [www.keystonerv.com](http://www.keystonerv.com) for more current product information and specifications. **Tow Vehicle Disclaimer. CAUTION:** Owners of Keystone recreational vehicles are solely responsible for the selection and proper use of tow vehicles. All customers should consult with a motor vehicle manufacturer or their dealer concerning the purchase and use of suitable tow vehicles for Keystone products. Keystone disclaims any liability or damages suffered as a result of the selection, operation, use or misuse of a tow vehicle. **KEYSTONE'S LIMITED WARRANTY DOES NOT COVER DAMAGE TO THE RECREATIONAL VEHICLE OR THE TOW VEHICLE AS A RESULT OF THE SELECTION, OPERATION, USE OR MISUSE OF THE TOW VEHICLE.** \*Length is defined as the distance from the centerline of hitch pin/coupler to rear bumper of trailer.

## TT / FW STANDARDS/OPTIONS

	TT	FW	TH	SINGLE
<b>INTERIOR STANDARD FEATURES</b>				
Range hood w/ light and exhaust fan	•	•	•	
Furrion® oven w/glass top and LED lights	•	•	•	
LED lighting	•	•	•	•
6 cu. ft. gas/electric refrigerator	•		•	
7 cu. ft. gas/electric refrigerator		•		
DVD/CD/MP3/Bluetooth stereo	•	•	•	
CD/Bluetooth radio				•
Stainless steel microwave	•	•	•	•
Decorative residential light fixture in slide		•		
Hidden laundry chute (most models)	•		•	
Single-basin undermount sink	•	•	•	•
Cable TV hookup w/booster	•	•	•	•
Solid hardwood cabinetry	•	•	•	•
Reversible bedspread	•	•	•	•
Teddy Bear™ bunk mattresses	•	•	•	•
Bathroom exhaust fan	•	•	•	
Decorative hi-def backsplash	•	•	•	
Quick recovery 6-gallon gas DSI water heater	•	•	•	•
8000 BTU Air Conditioner				•
13,500 BTU ducted air conditioner w/ thermostat	•	•	•	
20,000 BTU furnace				•
30,000 BTU furnace	•	•	•	
12v 55 AMP converter	•	•	•	•
Operable windows in slide-out	•	•	•	
<b>EXTERIOR STANDARD FEATURES</b>				
Laminated sidewalls w/ aluminum framework		•		
Mega pass-through storage compartment	•	•	•	•
Dexter® E-Z Lube axles	•	•	•	•
E-Coated corrosion-resistant wheels	•	•	•	•
2 interior and 2 all-weather exterior speakers	•	•	•	•
Quick-release gas line	•	•	•	
Seamless, one piece TPO roof membrane	•	•	•	•
Fully walkable roof	•	•	•	
Diamond plate rock guard	•		•	•
Triple entry steps on main door	•	•	•	
Single entry step on main door				•

TT Travel Trailers  
 FW Fifth Wheels  
 TH Tailgator Toy Hauler Travel Trailers  
 SINGLE Single-Axle Mini Travel Trailers

	TT	FW	TH	SINGLE
Tinted safety glass windows	•	•	•	•
4G LTE and WiFi ready	•	•	•	
Extended rain gutters	•	•	•	•
Furrion® backup camera/observation prep	•	•	•	
<b>CONSTRUCTION STANDARD FEATURES</b>				
24' x 8' DynaSpan® subflooring	•	•	•	•
2" x 3" floor joists, 12" on center	•	•	•	•
Floorplan-specific frame	•	•	•	•
Full width outriggers	•	•	•	•
Triple-seal slide w/ steel C-channel moisture barrier	•	•	•	•
Tuf-Lok™ crush-resistant ductwork couplers	•	•	•	•
Color-coded unified wiring system	•	•	•	•
3-year fully transferable Limited Structural Warranty	•	•	•	•

### SPRINGDALE TRAVEL TRAILER & TOY HAULER 20TH ANNIVERSARY PACKAGE (MANDATORY) – EXCLUDING MINI'S

Vaulted ceiling; power tongue jack; upgraded pressed countertops; led adjustable power awning; central monitoring panel; external tv hookup/mount; bedroom tv prep; heated & enclosed underbelly (slide models); booth accent lighting; spare tire & carrier

### SPRINGDALE "NEXT LEVEL" PACKAGE (266RL, 270BH, 271RL, 274RB, 280BH, 282BH, 293RK, 296BH, 298BH, 303BH, 311RE, 332RB, 333RE)

Smooth front metal; power stabilizer jacks; 7 cu. ft. stainless refrigerator; led tv; tri-fold sleeper sofa; "do-more" free-standing dinette; aluminum alloy wheels; decorative light fixture in slide

### SPRINGDALE "NEXT LEVEL" PACKAGE (MANDATORY FOR 27TH, 32TH) (235RB, 262RK, 27TH, 32TH)

Smooth front metal; power stabilizer jacks; 7 cu. ft. stainless refrigerator; led tv; "do-more" free-standing dinette; aluminum wheels; decorative light in slide

### SPRINGDALE "NEXT LEVEL" PACKAGE (MANDATORY) (38BH, 38FL, AND 38FQ)

Smooth front metal; tri-fold sleeper sofa; led tv; "do-more" free-standing dinette; aluminum alloy wheels

### SPRINGDALE "NEXT LEVEL" PACKAGE (202RD AND 260BH)

Smooth front metal, 7 cu. ft. stainless refrigerator; led tv; "do-more" free-standing dinette, aluminum alloy wheels, decorative light in slide

### SPRINGDALE FIFTH WHEEL 20TH ANNIVERSARY PACKAGE (MANDATORY) (253FWRE, 272FWRE, 300FWBH, 302FWRK)

Upgraded pressed countertops; LED adjustable power awning; central monitoring panel, external TV hookup/mount; bedroom TV prep; heated & enclosed underbelly; booth accent lighting; spare tire & carrier; 50 AMP service, wired/braced for 2nd A/C.

### OTHER OPTIONS (N/A ON SPRINGDALE MINI SINGLE-AXLE TRAVEL TRAILERS)

50 AMP service, wired and braced for 2nd A/C Available on: 27TH, 270BH, 271RL, 274RB, 280BH, 282BH, 293RK, 296BH, 298BH, 303BH, 311RE, 332RB, 333RE, 38BH, 38FL, 38FQ)

15,000 BTU A/C IPO 13,500 BTU A/C

FREE-STANDING TABLE AND CHAIRS (SELECT MODELS)

### SPRINGDALE SINGLE AXLE MINI ONLY OPTION

13,500 BTU direct-blow A/C (replaces the 8000 BTU, side-mount A/C)

BUILT FOR THE LONG HAUL



PRINT 8.2018

