

VENTANA LE
diesel motor coach



MEET *the* TOTAL PACKAGE

From innovations like Comfort Drive™ and the Newmar-exclusive STAR Foundation, to a decidedly polished interior, the 2019 Ventana LE is where your wants and needs exist in perfect harmony. Below a vent-free Feature Ceiling lie residential qualities like new grouted vinyl tile flooring and a routed solid-surface kitchen backsplash with glass mosaic inserts, while both sides of the cabin are adorned with partial-wood window treatments and a backlit carved wood fascia.

DOUBLE-PANE WINDOWS



Crisp and colorful



go anywhere
DO EVERYTHING

FLOOR PLANS

8 available at 34, 37, or 40 feet

HIGHLIGHTS & AMENITIES

Freightliner® XCR chassis with V-Ride® rear suspension

Cummins® diesel engine with up to 360 horsepower

Comfort Drive™ adaptable steering technology

8.0 kW Quiet Series diesel generator with automatic start

Lennox full-paint Masterpiece™ finish

The place to be



Floor plan 3717 with Lennox décor

ONE SPACE *fits* ALL

Like to host? Then you will love Ventana LE, where you can find everything from a pair of recliners to a sofa that doubles as a set of bunk beds on select floor plans. Choose floor plan 3717 and pick between opposing jackknife sofas or two power-adjustable theater seats, which come perfectly positioned across from a retractable 48-inch Vizio® LED TV with a standard Bose® soundbar and Blu-ray player. Equipped for the modern family, Ventana LE also offers two in-coach Wi-Fi access solutions.

MULTIPLEX LED LIGHTING



Grouted vinyl tile flooring

Best seats in the house

FIRST-CLASS ALL *the* WAY

The 2019 Ventana LE is designed to make each journey rival your every destination, starting with power-adjustable Flexsteel® captain's chairs that include a passenger seat workstation and footrest.

Standard side and rearview cameras enhance your vision, and an available Rand McNally® navigation system is capable of providing turn-by-turn directions. Floor plan 3717 is furnished with a standard booth dinette featuring a foldable table, with storage ottomans present on select floor plans.



your dream kitchen



Newport glazed maple hardwood cabinetry



40" x 30" FIBERGLASS SHOWER



HELP YOURSELF to MORE

Feel at home as you prepare your favorite meals from a fully equipped galley stocked with stainless steel appliances comprised of a Whirlpool® microwave and available French-door refrigerator. A polished solid-surface countertop extends to a fixed peninsula when you choose floor plan 3717, for an L-shaped kitchen that houses two separate full-length pantries. In the master bath, a large sliding-door shower and solid-surface vanity await, presenting both linen and medicine cabinets.

Your relaxation station



A tranquil RETREAT

Your days are filled with discovery, which is why Ventana LE presents a master bedroom where you can rest and renew with help from an available Sleep Number® adjustable mattress. For those nights when you just want to sit back and enjoy the show, there's a Vizio® LED TV with a second Blu-ray/DVD player. A Whirlpool® washer and dryer is optional inside all floor plans equipped with a rear-wall wardrobe, and every master suite comes styled with a designer headboard and two solid-surface nightstands.



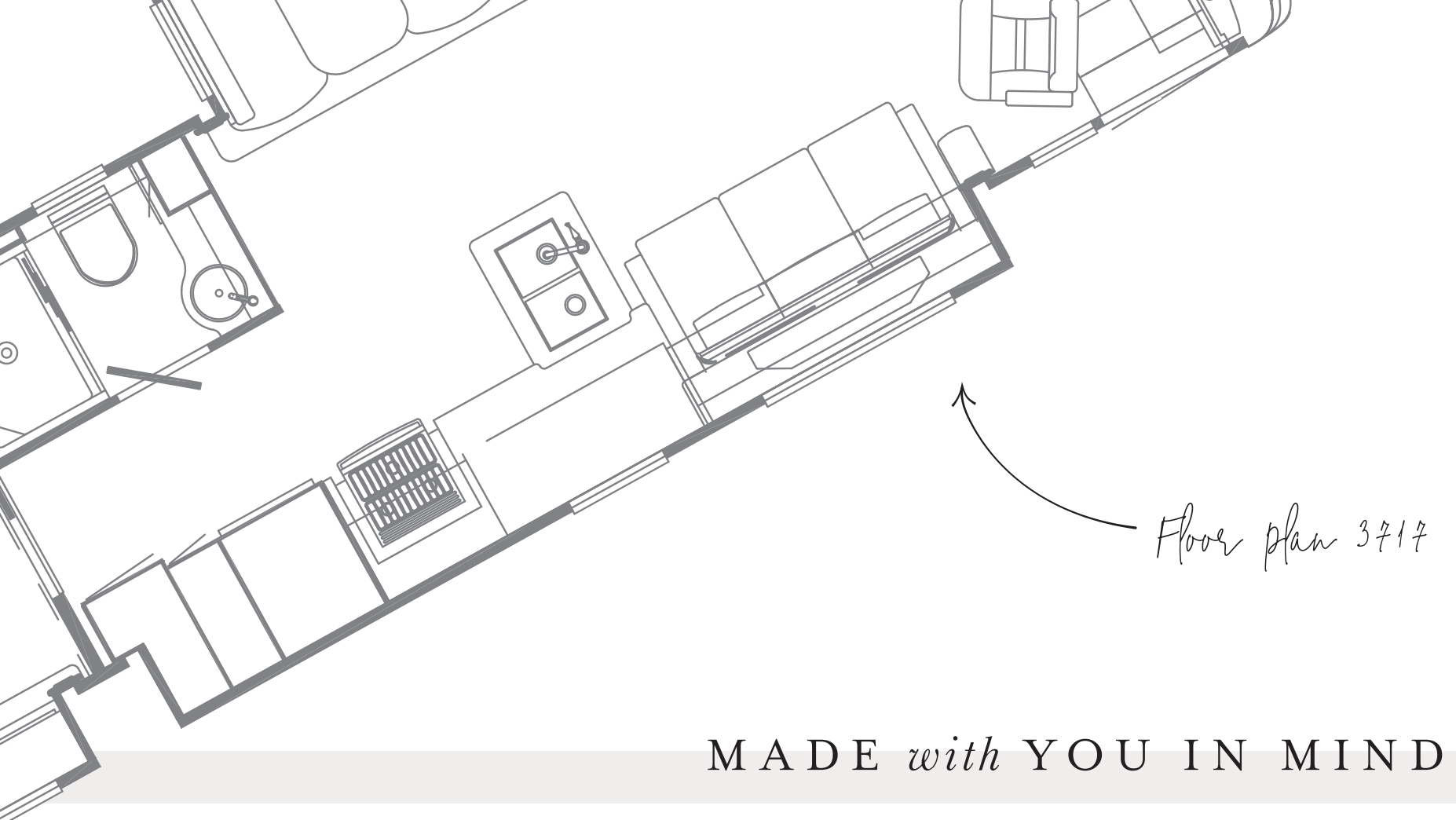
AVAILABLE KING BED

ready for any occasion



REVEL IN *the* OUTDOORS

Make your Ventana LE tailgate central with an available outdoor entertainment center, complete with an LED TV and Bluetooth®-compatible soundbar. Or, sit back and admire your dazzling full-paint Masterpiece™ finish. Lennox showcases a charcoal-metallic base, protected up front and on the sides by Diamond Shield® film. New for 2019, all 37- and 40-foot models are paired with an Allison® 3,000 MH transmission, 10,000 lb. tow hitch, and a 24,000 lb. rear axle, while every Ventana LE chassis is strengthened by the Newmar STAR Foundation.



Floor plan 3717

MADE *with* YOU IN MIND

Customer-driven floor plans have been a Newmar hallmark since the beginning, and the new 3717 is no different. Boasting four power slideouts, an L-shaped kitchen, and a generous amount of plush seating options, 3717 is arranged for travelers who value an open and airy cabin where space is plentiful and comfort is easy to come by. Take the living area, for example, where opposing sofas are paired with a dinette booth and surrounded by double-pane windows.

WARM *and* WELCOMING

If soft and inviting is how you would describe your favorite style, look to the Lennox décor offered exclusively on the 2019 Ventana LE. Lennox is filled with modern design cues, along with materials like toffee-colored faux leather and a taupe-patterned bedspread. Simple and understated, Lennox is designed to age gracefully and mesh seamlessly with available Newport maple cabinets that come covered by a tasteful matte finish.

Lennox décor →



EXTERIOR *and* INTERIOR DÉCOR



ARMORY EXTERIOR

Awning Color: Charcoal Tweed



ARMORY INTERIOR

a. Furniture/ Fabric b. Flooring c. Carpet d. Counter Top



LENNOX EXTERIOR

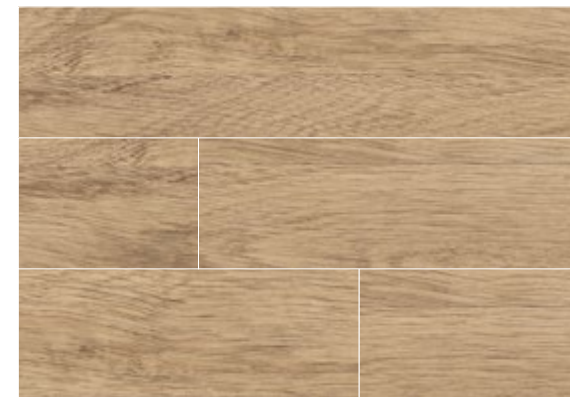
Awning Color: Linen Tweed



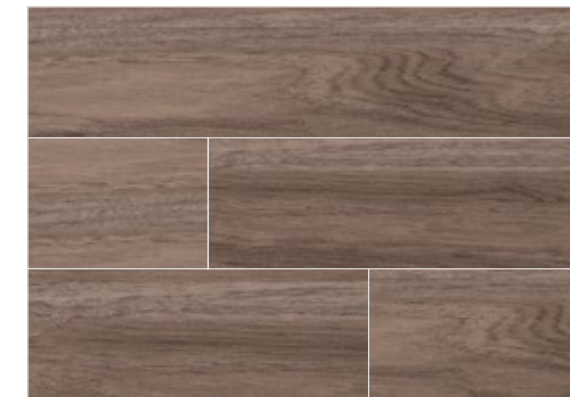
LENNOX INTERIOR

a. Furniture/ Fabric b. Flooring c. Carpet d. Counter Top

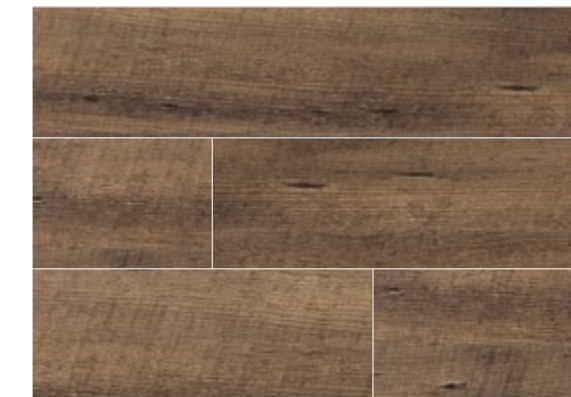
OPTIONAL LAMINATE PLANK FLOORING



ASTORIA/WICKER
MAPLE FLOORING



HARBOR/NEWPORT
MAPLE FLOORING



CALYPSO/BERMUDA
MAPLE FLOORING

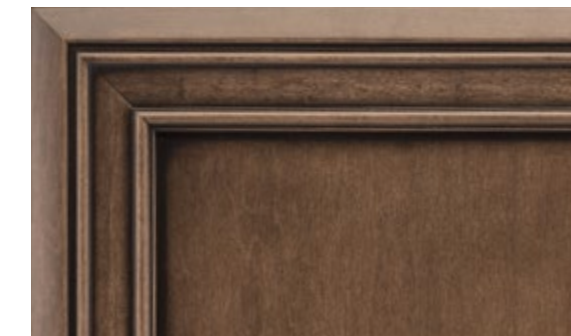
WOOD OPTIONS



ASTORIA/WICKER
GLAZED MAPLE

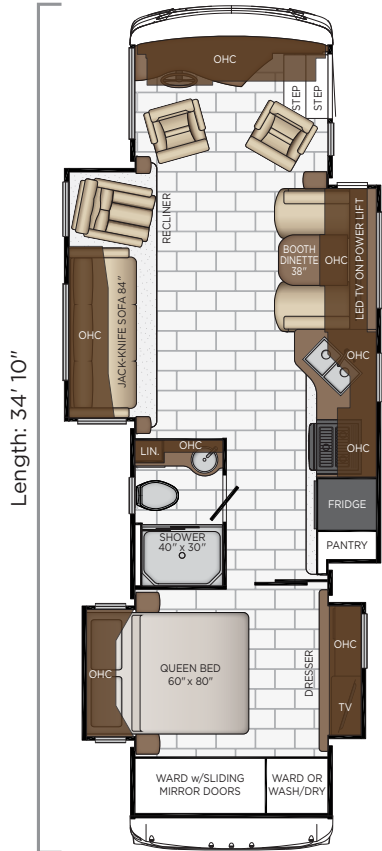


HARBOR/NEWPORT
GLAZED MAPLE



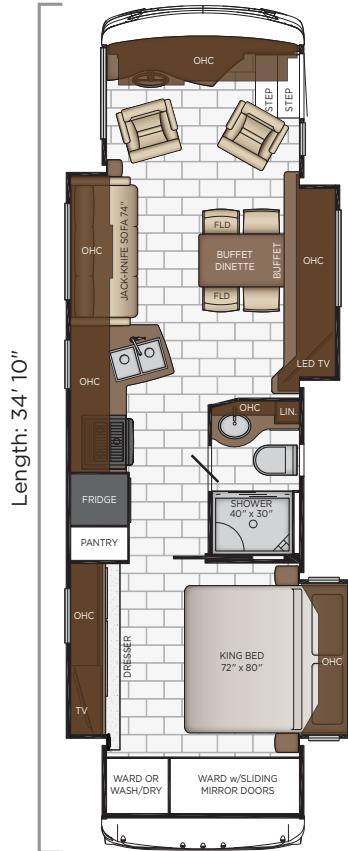
CALYPSO/BERMUDA
GLAZED MAPLE

VENTANA LE



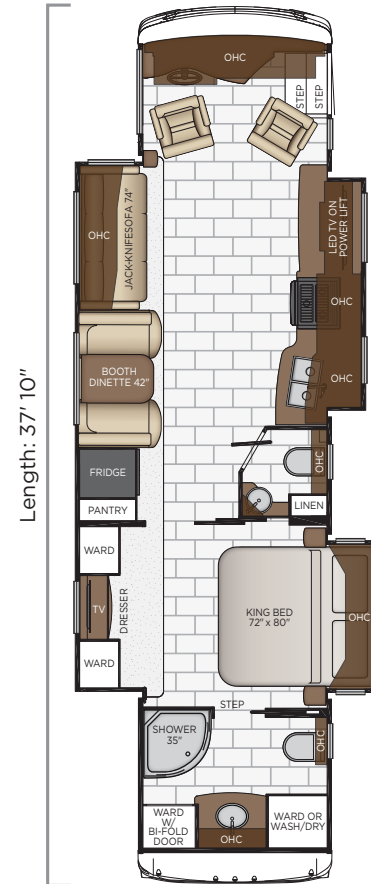
3412

Length	34'10"
Width	101.5"
App. Overall Height	12'10"
Interior Width	95.5"
Interior Height	83"
Grey Tank	65 gal.
Sewage Tank	45 gal.
Water Tank	105 gal.
Propane Tank	32 gal.
Furnace	35,000 btu



3426

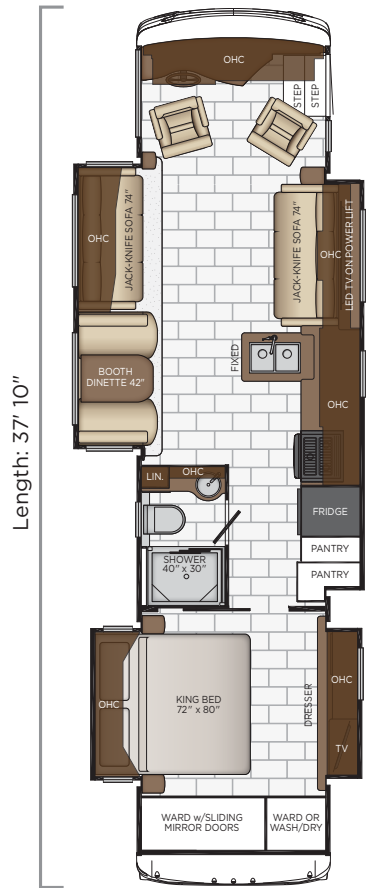
Length	34'10"
Width	101.5"
App. Overall Height	12'10"
Interior Width	95.5"
Interior Height	83"
Grey Tank	65 gal.
Sewage Tank	45 gal.
Water Tank	105 gal.
Propane Tank	32 gal.
Furnace	35,000 btu



3709

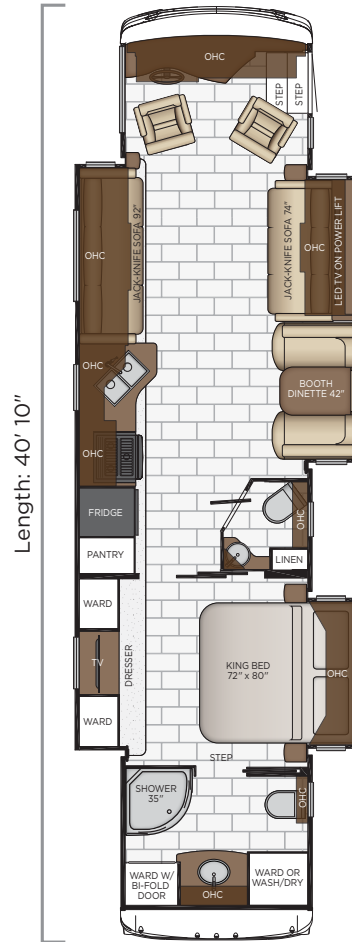
Length	37'10"
Width	101.5"
App. Overall Height	12'10"
Interior Width	95.5"
Interior Height	83"
Grey Tank	65 gal.
Sewage Tank	45 gal.
Water Tank	105 gal.
Propane Tank	32 gal.
Furnace	54,000 btu

FLOOR PLANS



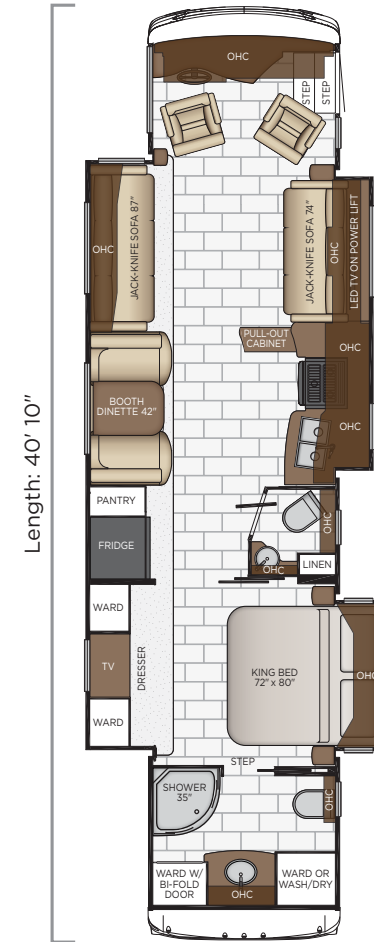
3717

Length	37'10"
Width	101.5"
App. Overall Height	12'10"
Interior Width	95.5"
Interior Height	83"
Grey Tank	65 gal.
Sewage Tank	45 gal.
Water Tank	105 gal.
Propane Tank	32 gal.
Furnace	54,000 btu



4002

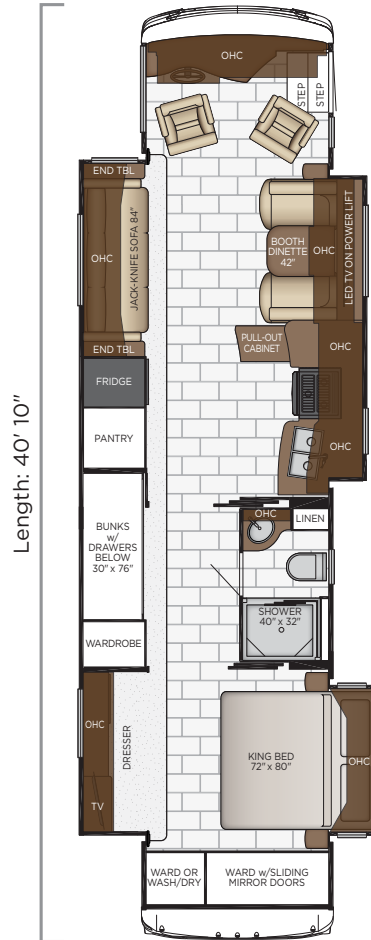
Length	40'10"
Width	101.5"
App. Overall Height	12'10"
Interior Width	95.5"
Interior Height	83"
Grey Tank	65 gal.
Sewage Tank	45 gal.
Water Tank	105 gal.
Propane Tank	32 gal.
Furnace	54,000 btu



4037

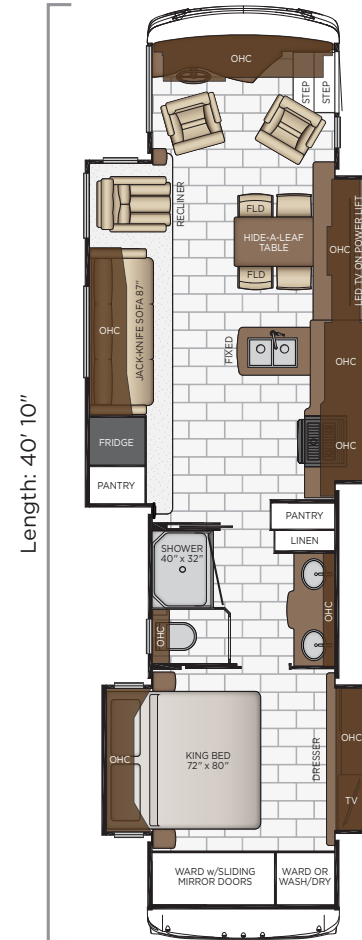
Length	40'10"
Width	101.5"
App. Overall Height	12'10"
Interior Width	95.5"
Interior Height	83"
Grey Tank	65 gal.
Sewage Tank	45 gal.
Water Tank	105 gal.
Propane Tank	32 gal.
Furnace	54,000 btu

VENTANA LE



4045

Length	40'10"
Width	101.5"
App. Overall Height	12'10"
Interior Width	95.5"
Interior Height	83"
Grey Tank	65 gal.
Sewage Tank	45 gal.
Water Tank	105 gal.
Propane Tank	32 gal.
Furnace	54,000 btu



4048

Length	40'10"
Width	101.5"
App. Overall Height	12'10"
Interior Width	95.5"
Interior Height	83"
Grey Tank	65 gal.
Sewage Tank	45 gal.
Water Tank	105 gal.
Propane Tank	32 gal.
Furnace	54,000 btu



QUALITY YOU CAN FEEL

Like a fine home, the 2019 Ventana LE is framed 16 inches on center, and is covered by a BriteTEK™ roof with walkable decking and an integrated gutter rail.

FLOOR PLAN	ENGINE HP	AXLE RATIO	FUEL CAP.	WHEEL BASE	FRONT GAWR	REAR GAWR	TAG GAWR	GVWR	GCWR	APP. UVW	APP. NCC
3412	340	4.78	100 gal.	206	12400 lb.	20000 lb.	n/a	31400 lb.	33000 lb.	27100 lb.	4300 lb.
3426	340	4.78	100 gal.	206	12400 lb.	20000 lb.	n/a	31400 lb.	33000 lb.	26300 lb.	5100 lb.
3709	360	4.78	100 gal.	242	13500 lb.	24000 lb.	n/a	37500 lb.	47500 lb.	27900 lb.	9600 lb.
3717	360	4.78	100 gal.	242	13500 lb.	24000 lb.	n/a	37500 lb.	47500 lb.	27700 lb.	9800 lb.
4002	360	4.78	100 gal.	276	13500 lb.	24000 lb.	n/a	37500 lb.	47500 lb.	29500 lb.	8000 lb.
4037	360	4.78	100 gal.	276	13500 lb.	24000 lb.	n/a	37500 lb.	47500 lb.	29600 lb.	7900 lb.
4045	360	4.78	100 gal.	276	13500 lb.	24000 lb.	n/a	37500 lb.	47500 lb.	29400 lb.	8100 lb.
4048	360	4.78	100 gal.	276	13500 lb.	24000 lb.	n/a	37500 lb.	47500 lb.	29000 lb.	8500 lb.

The content in our literature depicts and describes products that are subject to change. For the most recent images and information, please visit NewmarCorp.com.

Lengths, heights, widths and dry weights are approximate. Weight will vary based on optional equipment added to the above base weight.

GAWR: Gross Axle Weight Rating is the maximum permissible weight for an axle.

GVWR: Gross Vehicle Weight Rating is the maximum permissible weight for a fully loaded motor coach.

GCWR: Gross Combination Weight Rating is the value specified by the manufacturer of the vehicle as the maximum allowable loaded weight of this motor coach and any towed trailer or towed vehicle.

UVW: Unloaded Vehicle Weight is the weight of this motor coach as built at the factory with full fuel, engine oil and coolants. Does not include cargo, fresh water, propane gas or dealer-installed accessories.

NCC: Net Carrying Capacity is the maximum weight of all occupants, including the driver, personal belongings, food, fresh water, waste water, propane gas, tools, tongue weight of towed vehicle, dealer-installed accessories, etc., that can be carried by the motor coach.

Specifications supplied by the chassis manufacturer.

Ventana LE R-Values:

Roof R-Value = 19

Sidewall R-Value = 11

Floor R-Value = 16

Basement R-Value = 4

FEATURES *and* OPTIONS



EXTERIOR



EXTERIOR FEATURES

Full-Paint Masterpiece Finish™ with Diamond Shield Protection on Front Cap

Convex Exterior Mirrors with Remote Control and Defrost

Entrance Door with Automatic Step

Assist Handle at Entrance Door

Hydraulic Leveling Jacks

Stainless Steel Exterior Trim Pieces on Front Cap and Grille Area

Mud Flaps

Rear Ladder

Rear Hitch for Towing Car

Undercoating

Hammock Backer

OPTIONS

Patio Hammock Package

Flagpole Bracket

Temporary Windshield Protection (For Transport Only)

CONSTRUCTION FEATURES

BriteTEK™ Roof with Walkable Deck

Gelcoated Fiberglass Exterior Sidewalls, Front and Rear Caps

Aluminum-Frame Sidewalls & Roof Construction, 16" on Center

5/8" Foam Insulation Laminated in Sidewalls & Ceiling

Polar Pak R19 Batten Insulation in Roof

OPTIONS

One Piece Molded Fiberglass Roof



WINDOWS, AWNINGS & VENTS

One Piece Tinted Windshield

Frameless Double-Pane Tinted Safety Glass Windows

Fan-Tastic Vent with Rain Sensor in Kitchen and Bathroom

Skylight Above Shower

Carefree Traveler Power Side and Entrance Door Awning with Alumaguard

Slideout Awning Covers

Kitchen Window

OPTIONS

Bunk Windows

Egress Door with Ladder System*

CHASSIS FEATURES

Freightliner® XCR Chassis with 340Hp Cummins ISB Engine 34' Floor Plans

Freightliner® XCR Chassis with 360Hp Cummins ISB Engine 37'-40' Floor Plans

Chrome Wheel Simulators

Comfort Drive Steering System with Adjustable Control

V-Ride Drive Axle Suspension

Cruise Control

Manual Tilt and Telescope Steering Wheel with VIP Smart Wheel

Recessed Fuel Fills with Crossover to Fill from Either Side

Anti-Lock Braking System

Chassis Battery Disconnect

AIR CONDITIONING & HEATING

Two 15M Penguin® Heat Pump Air Conditioners

Propane Furnace with Ducted Heat

Dash Heater and Air Conditioner

Wall Mounted Sensors for Heating and Air Conditioning

Built-in Overhead Defroster Blower Fan

ELECTRICAL FEATURES

8.0 kW Cummins Onan® Diesel Quiet Series Generator

50 Amp Electrical Service with Flexible Cord and Automatic Transfer Switch

Automatic Generator Start on Low Battery or Temperature Setting

Four 12-Volt House Batteries on Pull-out Tray

Battery Disconnect Switch for House Battery

1200 Watt Inverter

Emergency Engine Start Switch

Energy Management System

Exterior Security Light on Doorside

Mid-ship Side Turn Signals

LED Lights Recessed in Ceiling and Underneath Overhead Cabinets

Manually Operated Hold-To-Run Slideout Switch

12 Volt Auxiliary Receptacle on Dashboard

USB Charger At Dinette & Bedroom Nightstand

USB Outlet at Dash for Driver Use

USB Outlet at Head of Each Bunk Area*

Engine Block Heater

Cable TV Connection

Lights in Exterior Storage Compartments

Interior Courtesy Lights

Spare Fuses in Chassis Fuse Panel & House Fuse Panel

Accent Lights in Fascia Slideout Trim

Multiplex Lighting Control System

OPTIONS

2000 Watt Modified Sine Inverter with 4-Six Volt Batteries*

Transfer Switch with Surge Protector

PLUMBING & BATH FEATURES

Demand Water System

Sewage Holding-Tank Rinse

Water Heater Bypass System

Dometic 321 China Bowl Stool or Macerator Stool*

Systems Monitor Panel

Fiberglass Shower with Glass Door

Exterior Shower

Water Filter for Entire Unit

INTERIOR FEATURES

Dash Panel Color Coordinated ABS

Interior Assist Handle at Main Entry Door

Power Stepwell Cover

Inlaid Six Panel Design Interior Passage Doors

Decorative Wall Art

Padded Vinyl Ceiling

Vinyl Tile Floor in Kitchen, Bathroom and Living Area

Bathroom Floor Extended into Bedroom Area

Carpeting on Slideout Floors

MCD Window Shades

MCD Power Shades at Windshield and Manual Shades on Driver/Passenger Side Windows

Quilted Bedspread with Accent Pillow

OPTIONS

Carpet in Bedroom

Vinyl Plank Floor in Place of Vinyl Tile



CABINETS & FURNITURE

Calypto Glazed Maple Mitered Designer Cabinet Doors with Matte Finish
Concealed Hinges on Cabinet Doors
Drawers with Full Extension Ball Bearing Guides
Fixed Pantry Shelves
Polished Solid Surface Countertop in Kitchen with Stainless Steel Sink and Sink Covers
Polished Solid Surface Countertops in Bathroom and Bedroom
Flexsteel® Deluxe Leather Sofa and Driver/Passenger Seats
Plush Pillow Top Mattress
Lifts on Bed Top
Front Seats with 6 Way Power
Manual Foot Rest on Passenger Seat
Passenger Seat Work Station
Extended Rotation Concealed Hinge for Washer/Dryer Cabinet Door
Mesh Cell Phone Holder at each Bunk Bed*
OPTIONS
Bermuda Glazed Maple Mitered Designer Cabinet Doors with Matte Finish
Astoria Glazed Maple Mitered Designer Cabinet Doors with Matte Finish
Harbour Glazed Maple Mitered Designer Cabinet Doors with Matte Finish
Newport Glazed Maple Hardwood Face Frame Mitered Designer Cabinet Doors with Matte Finish
Wicker Glazed Maple Hardwood Face Frame Mitered Designer Cabinet Doors with Matte Finish
Combination Desk with Buffet Dinette Table, 2 Fixed & Two Folding Chairs*
Buffet Dinette with 2 Fixed & Two Folding Chairs*
Flexsteel Euro Booth Dinette with 1-6" Table Leaf*
Hide-A-Bed with Air Mattress*
Sleep Number R5 Square Air Mattress
Sleep Number R5 Radius Corner Air Mattress
2 Recliners with Lampstand and Reading Lights*
Euro Booth Dinette with Extra Leaves and 2 Folding Chairs*

Fold-N-Tumble Sofa*
Power Incline Retracting Bed Base, Sleep Number Air Mattress*
Power Incline Head of Bed with Sleep Number Air Mattress*
87" Bunk Sofa*
87" Bunk Sofa with End Table*
Side Folding Hide-A-Bed Sofa with Air Mattress*
Powered Theater Seating*
Two Ottomans*

APPLIANCES & ACCESSORIES

30" Over the Range Stainless Steel Microwave
Recessed Stainless Steel Three-Burner Range with Oven
Norcold® 10 Cu. Ft. Stainless Steel Refrigerator
10 gal. Gas/Electric Water Heater with Direct-Spark Ignition
Prep for Two-Piece Washer/Dryer
Flush Gas Cooktop Cover of Matching Countertop Material
Air Horns
OPTIONS
Norcold® 12 Cf. Four-Door Refrigerator with Icemaker
Icemaker added to Standard Norcold® Refrigerator
Icemaker Added to Standard Norcold® Refrigerator with Heated Water Line
Whirlpool 19.7 Cf. Refrigerator, 2000 Watt Pure Sine Inverter & Six-6 Volt Batteries and 22 gal. Propane Tank
Whirlpool 11 Cf. Refrigerator, 2000 Watt Pure Sine Inverter & Six-6 Volt Batteries and 22 gal. Propane Tank
Whirlpool 11 Cf. Refrigerator, 2000 Watt Pure Sine Inverter & Six-6 Volt Batteries and 22 gal. Propane Tank and Icemaker
30" Convection Stainless Steel Microwave Oven with Three Burner Stainless Cooktop
Whirlpool® Two Piece Stacked Washer & Dryer
Fireplace in Living Area*



AUDIO, VIDEO & ACCESSORIES

LED TV and DVD Player in Living and Bedroom Areas, TV Sizes Vary per Floor Plan*
Dash Radio/CD Player with Harman/JBL 180 Watt Sound System and Subwoofer
Bluetooth Microphone for Sony® Dash Radio
Rearview Color Monitor System with Audio
Side-view Cameras Displayed onto Rearview Monitor Screen
Winegard Digital Crank-up TV Antenna
Satellite Prep on Roof
TV Jack and 110 Volt Recept in Door Side Exterior Storage Compartment
High Definition Component Wiring
Two Blu-ray Disc Players
Bose® Solo 5 Soundbar Sound System
10 Bc Fire Extinguisher, Smoke Detector, Propane and Carbon Monoxide Detector
OPTIONS
Vizio 32" LED TV in Front Overhead
Two" LCD Flip Down LCD Monitor/DVD Player with Headphone at each Bunk*
Exterior Entertainment Center in Sidewall with Vizio 43" LED TV & Soundbar*
Exterior Entertainment Center in Storage Compartment with Vizio 32" LED TV & Soundbar*
SiriusXM® Satellite Radio with Antenna (Does not include monthly subscription)
WiFiRanger Sky3 Pack Router
Winegard Automatic Dome Satellite Dish
Winegard Automatic Open Face Satellite Dish
Winegard Automatic Open Face SWM Satellite Dish
Winegard Cellular In Motion Wifi - Requires Cellular Subscription Through Winegard
WiFiRanger SkyPro LTE Cellular Router
Winegard In Motion Dome Satellite Dish
Winegard Rayzar Automatic Digital TV Antenna
Xite Dash Radio, 6" Monitor with Rand McNally Navigation

*Check with dealership on floor plan availability.

The content in our literature depicts and describes products that are subject to change. For the most recent images and information, please visit NewmarCorp.com.

THE NEWMAR CUSTOMER EXPERIENCE

The Newmar difference goes beyond our industry-leading motor coaches to deliver you with an unrivaled ownership experience.



QUALITY FROM THE START

Every Newmar is crafted one at a time by folks who have spent an average of eight years building them. And each coach we assemble must undergo more than 1,000 tests and checks before ever leaving our factory.



CAREFULLY SELECTED DEALERS

We view our dealership network in terms of quality, not quantity. Each of our dealers acts as a partner in our shared mission to exceed your highest of expectations, for an ownership experience that's second to none from day one.



EVERYTHING IN ONE PLACE

As a Newmar owner, you'll find resources specific to your coach through Newgle, an easy-to-use knowledge base that houses everything from user guides to technical support documents.



FRIENDS FOR LIFE

*Meet fellow owners through the **Newmar Kountry Klub**, a top social club for RV travelers that hosts rallies and other special events throughout the U.S. and Canada.*



SEAMLESS SERVICE

When you join the Newmar family, we pair you with a dedicated service specialist with expert knowledge of your exact coach. Available 24/7, our service specialists guarantee dealer warranty authorizations within four business hours and ship all in-stock parts the same day, free of charge.



ROCK-SOLID PROTECTION

*All models include a one-year/unlimited mileage limited warranty and a five-year, non-transferable structural warranty that covers your coach's superstructure in the event it fails to perform. **Ask your Newmar dealer for more details.***



A. ROOF

BriteTEK™ Roof with Walkable Deck

Batten Insulation

A/C Ducting

16" on Center Aluminum Rafter Framing

Kraft Paper Vapor Barrier

5/8" Bead Foam

3/16" Panel

Padded Vinyl Overlay

B. SIDEWALL

Interior Wall Panel

5/8" Bead Foam

Kraft Paper Vapor Barrier

Batten Insulation

Composite One-Piece Gelcoat Exterior Wall

Aluminum Framing

C. FLOOR

Carpet/Tile

Carpet Padding

5/8" Floor Decking

Batten Insulation

16" on Center Wood Framing

Polyethylene Moisture Barrier

D. EXTERIOR

(2) 15 M Penguin™ Central Air Conditioners with Heat Pump

One-Piece Bonded Windshield

Frameless, Double-Pane, Tinted Safety Glass Windows

Side-Hinged Baggage Doors

OUR PARTNERS

Newmar Quality Begins With The Company We Keep

You deserve class-leading performance from names you can trust. That's why we only work with suppliers dedicated to providing our customers with unrivaled quality, comfort, and support.



BASF

The Coatings division of BASF is a global expert in the development and production of innovative and sustainable OEM and refinish coatings that deliver solutions beyond your imagination.



INDUSTRIAL FINISHES

Industrial Finishes has supported RV manufacturers for over four decades. The Industrial Finishes paint process delivers uncompromising quality, providing your coach with a true "Masterpiece" finish.



FLEXSTEEL®
RECREATION

FLEXSTEEL RECREATION

Flexsteel Recreation offers innovative furniture designed for a life that rarely sits still. Comfortable and space-saving, Flexsteel furniture ensures your RV is always ready for dining, sleeping, or hosting guests.



SONY

Beautifully designed Sony TVs and Blu-ray players combine to deliver an immersive picture and true-to-life sound. Revolutionize every aspect of your in-coach entertainment experience with Sony.



Driven By You

FREIGHTLINER CUSTOM CHASSIS

Freightliner Custom Chassis are renowned for their exceptional ride, excellent maneuverability, advanced chassis technology, and nationwide 24/7 factory-direct support.



SPARTAN MOTORS

Spartan Motors is an American company with over 30 years of experience designing and manufacturing the premier motorhome chassis, which provides superior performance, exceptional safety ratings, and industry-leading technology.



OUR PEOPLE MAKE *the* DIFFERENCE

*Newmar was founded in 1968 for one simple reason:
to build a better RV.*

*Since then, we've focused our efforts and energy on creating
residential-quality "homes on wheels," complete with
handmade cabinetry and designer décors.*

*And every Newmar is handcrafted one at a time by men and
women who have spent an average of eight years assembling
them, resulting in superior-quality coaches that fully surpass
their mass-produced competition.*

*Here, we don't just take the responsibility of designing,
engineering, and constructing your motorhome seriously, we
take it personally. Because in the end, our goal is not to win
your trust, but earn it. Not once, but every single time you
hit the road.*

Join us, and discover the Newmar difference for yourself.



WHEN YOU KNOW
the DIFFERENCE



Newmar Corporation | 355 N Delaware St | PO Box 30 | Nappanee, IN 46550-0030 | 574-773-7791 | Fax 574-773-2895

NewmarCorp.com