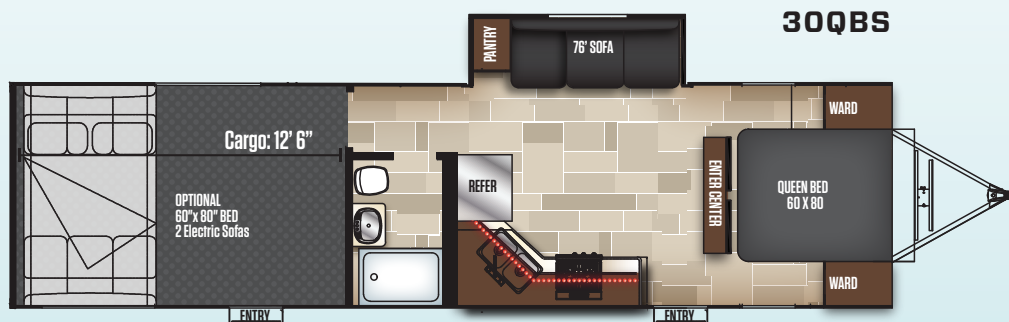
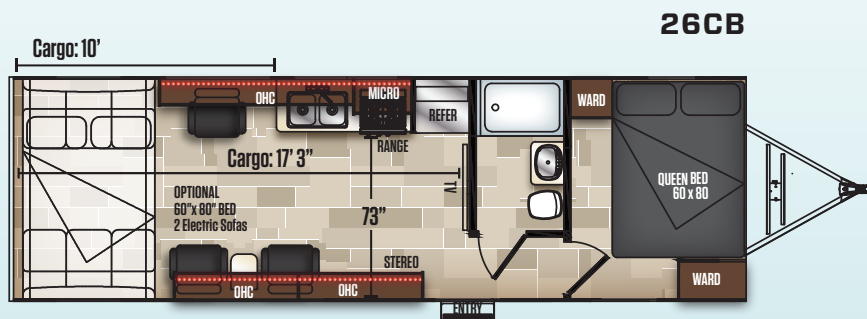
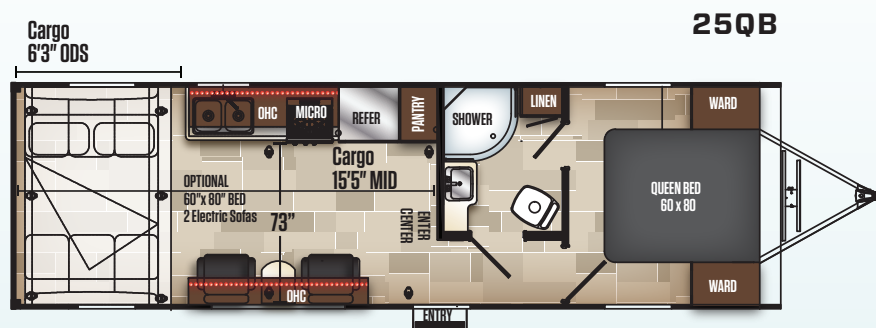
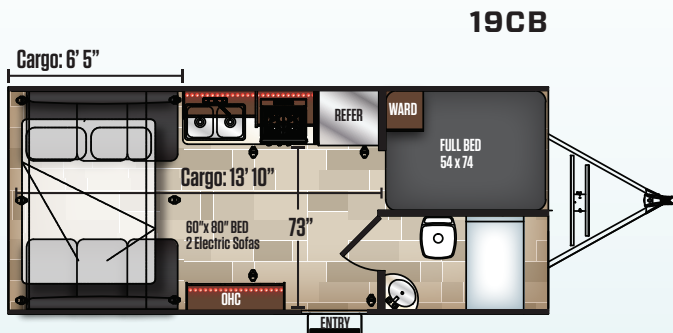


# ADRENALINE

## TRAVEL TRAILER TOY HAULERS



	ANT19CB	ANT25QB	ANT26CB	ANT30QBS
Hitch Weight (lbs.)	805	927	705	1264
UVW (lbs.)	6391	7709	7148	8797
GVWR (lbs.)	10961	11252	10938	13264
CCC (lbs.)	4614	3418	3757	4467
Exterior Length	25'	32' 8"	32' 5"	38' 1"
Exterior Height	12' 1"	12' 4 1/2"	12' 4"	12' 4"
Exterior Width	102"	102"	102"	102"
Fresh Water (gal.)	98	98	98	98
Black Water (gal.)	39	39	39	39
Gray Water (gal.)	78	78	78	84
Awning Size	15'	18'	18'	23'
Tire	ST225/ 75R15 LR E	ST225/ 75R15 LR E	ST225/ 75R15 LR E	ST235/ 80R16 LR E

\*\* All weights are approximate depending on how unit is equipped



# STANDARDS & OPTIONS

## EXTERIOR STANDARDS

- 102" Wide-Body Construction
- 8" Mega Rail Powder Coated Chassis (10" On 30QBS)
- Dexter Axle E-Z Lube®
- Dexter Axle E-Z Flex® Suspension
- Dexter Axle Nev-R-Adjust® Brakes
- 15" Aluminum Wheels W/ E-Rated Radial Tires (19CB/25QB/26CB)
- 16" Aluminum Wheels W/ E- Rated Radial Tires (30QBS)
- Nitrogen Filled Tires
- Azdel Laminated Sidewalls
- Aluminum Truss Roof with Fiberglass Insulation
- Welded Aluminum Sub-Floor
- Insulated Sub-Floor with Tongue & Groove Plywood
- Heated and Enclosed Underbelly
- Tinted Safety Glass Windows
- Radius Entrance AND Baggage Doors W/ Slam Latches
- 7'6" Patio Ready Ramp Door
- Key Lock Ramp Door Latches
- Generator Prep (Includes Transfer Switch, Fuel Lines, Remote Start, Wiring)
- Power Awning W/ LED Light Strip & Wind Sensor
- Rain Gutters W/ Extended Drip Spouts
- Smart Electric Tongue Jack
- 2-30LB LP Bottles W/ Cover
- Dual Battery Rack W/ Battery Box
- One Piece TPO Roof
- Black Tank Flush
- LED Lighting
- Exterior Marine Grade Speakers
- 4 Point Manual Stabilizer Jacks
- Rear Cargo Loading LED Light
- 30" Radius Entrance Door
- Solar Prep plug
- Deluxe Entry Door Assist Handle
- Step Entry W/ LED Lights
- Digital TV Antenna W/ Power Booster
- Satellite Prep
- Outside Spray Port

## INTERIOR STANDARDS

- Shaker Style Cabinets and Doors
- Soft Close Drawer Guides
- Designer Carefree Flooring
- LED Lighting Throughout

- Night Shades and/or Snap Shades Throughout
- 2 Burner Cast Iron Cooktop
- Thermofoil Counter Tops
- Easy Glide Full Extension Ball Bearing Drawer Guides
- Rear Pull Down Screen
- Steel Secured 2500# Rated D-Rings
- Auto-Ignition Furnace W/ Wall Mount Thermostat
- Maxx Air Fan w/ Remote in Cargo Area
- 2nd A/C Prep in Garage (30QBS)
- Medicine Cabinet
- Tub/Shower W/ Surround Glass Doors
- Porcelain Foot Flush Toilet
- Queen Size Electric Bed w/ Roll Over Sofas (19CB)
- Euro Recliners (2 - 25QB, 3 - 26CB)
- Multi Zone Interior Speakers
- Bedroom TV Hookups
- USB Charging Ports - Multiple Locations

## ADRENALINE PACKAGE (MANDATORY OPTION)

- Zero Gravity Ramp Door
- Fiberglass Front Cap w/ Rock Guard & LED Lights
- Aluminum Sturdy Step
- 15,000 BTU Ducted A/C
- 8 cu ft Refrigerator
- Convection Microwave Oven
- 40" JENSEN® LED TV
- Jensen® AM/FM/DVD/MP3 Bluetooth Stereo w/ App Control
- Rear Observation Camera Prep
- Spare Tire and Carrier
- Battery Disconnect
- Road Side 30 Gallon Fuel Station
- 6 Gallon Quick Recovery Gas/Electric DSI Water Heater
- Bed Spread

## OPTIONS

- Queen Size Electric Bed
- Queen Size Electric Bed w/ Roll Over Sofas (Standard 19CB)
- 4,000 Watt Onan Generator (19CB/25QB/26CB)
- 5,500 Watt Onan Generator (30QBS)
- One Touch 4 Point Auto-leveling
- Additional Maxx Air Fans
- Patio Ramp Door System



# Coachmen

Leader to the Great Outdoors.



YOUR **ADRENALINE** DEALER

All information contained in this brochure is believed to be accurate at the time of publication. However, during the model year, it may be necessary to make revisions and Forest River, Inc., reserves the right to make all such changes without notice, including prices, colors, materials, equipment and specifications as well as the addition of new models and the discontinuance of models shown in this brochure. Therefore, please consult with your Forest River dealer and confirm the existence of any materials, design or specifications that are material to your purchase decision. Litho. U.S.A. FDR 1505 P / W: 2018.05.31