

NEWMAR | 2019 CANYON STAR



# CANYON STAR

*gas motor coach*



6102

## STYLE *meets* VERSATILITY

*Far beyond the aspirational coaches strewn across the gas-engine landscape, Canyon Star is both well-designed and purposefully appointed, blending an uncompromising level of detail with residential amenities like available in-coach Wi-Fi and an optional bunk-bed sofa. Showcasing partial-wood window treatments, supple Ultralux® seating, and a new-and-improved toy hauler floor plan, the 2019 Canyon Star offers luxury made for open-road living.*

AVAILABLE FLEXSTEEL® RECLINER



*bold is beautiful*



## BUILT *to* GO BEYOND

### FLOOR PLANS

*11 available at 35, 36, 37, or 39 feet*

### HIGHLIGHTS & AMENITIES

*26,000 lb. Ford® F-53 chassis with 320-horsepower gas engine*

*Dometic® WeatherPro power side awning with aluminum shield*

*Standard side and rearview camera display*

*Outdoor kitchen and TV both available on select floor plans*

*Madras full-paint Masterpiece™ finish*

Simple sophistication



Floor plan 3719 with Madras décor

## *A lasting* IMPRESSION

*Equal parts timeless and contemporary, Canyon Star greets you with adjustable Multiplex LED lighting that flows from a newly crafted tray-style ceiling adorned with a glazed wood trim. A backlit wood slideout fascia displays carved accents and adds warmth to an already welcoming space, one that can be had with a jackknife sofa and a pair of storage ottomans. Love movie nights? A Vizio® LED TV, Blu-ray player, and Bose® soundbar all come standard.*

POWER CAPTAIN'S CHAIRS

*Refined and ready*



*New luxury vinyl tile flooring*



AVAILABLE COMFORT DINETTE BOOTH

## WARM *and* WELCOMING

*With hand-laid luxury vinyl tile flooring, lustrous metal-trimmed lighting sconces, and an available comfort dinette booth, the 2019 Canyon Star combines exceptional form with guest-friendly functionality. Up front, new six-way power adjustable driver and passenger seats provide ample comfort and support, while an optional six-inch color monitor with Rand McNally® navigation keeps you pointed in the right direction.*

DOUBLE-BOWL SINK



*Newport glazed maple hardwood cabinetry*

*Home sweet home*

## FULL of FLAVOR

*Serving up a highly textured, design-driven aesthetic, the Canyon Star galley is loaded with unique extras like a diamond-patterned backsplash, mitered designer cabinet doors crafted in our very own woodshop, and stainless steel appliances, including an available Whirlpool® French-door refrigerator and drawer-mounted dishwasher. In the master bath, a spacious fiberglass shower accompanies a polished solid-surface sink top and mirrored medicine cabinet.*



*Mid-ship master bath*

*picture perfect*



*Vizio® LED TV with Blu-ray player*

## **RICH *and* PLENTIFUL**

*The abundance of residential qualities inside the 2019 Canyon Star goes well beyond the surface. Take the rear-wall wardrobe inside select floor plans, which is capable of housing an available stacked Whirlpool® washer and dryer. Then, there's the optional Sleep Number® adjustable mattress. And don't forget opulent extras such as a deluxe headboard and stacked drawers topped with a matte wood finish.*



**AVAILABLE KING BED**

Enjoy every second



## TAKE *the* PARTY OUTSIDE

*Canyon Star not only presents you with multiple options for in-coach living and storage, it offers several ways to have fun at the campsite, including an outdoor entertainment center starring an LED TV. Power comes from a standard 5.5 or available 7.0 kilowatt Cummins® Onan generator, while baggage doors with heavy-duty side hinges keep your gear secure.*

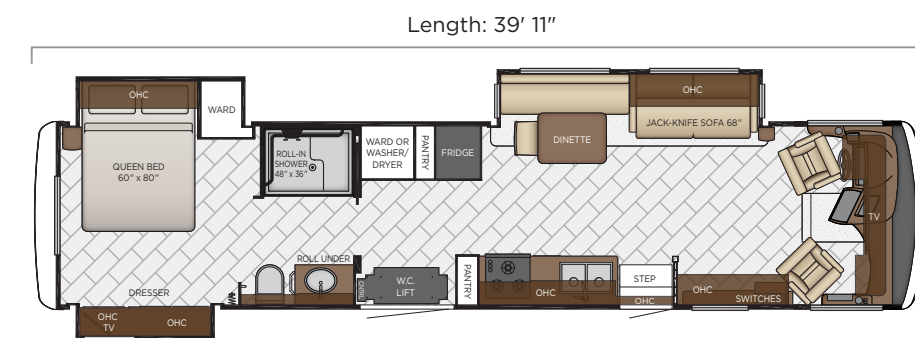


Maximum accessibility



## GET IN *and* GET OUT THERE

The founding member of the Newmar Mobility Lineup, Canyon Star 3911 presents a stylish living space outfitted with everything you need to travel comfortably, starting with lowered switches and appliances, an optional power-adjustable bed and L-shaped dinette, and a roll-in shower. A fully integrated BraunAbility® power lift makes entering and exiting a breeze, while a widened aisleway extends the full length of the coach.



### 3911

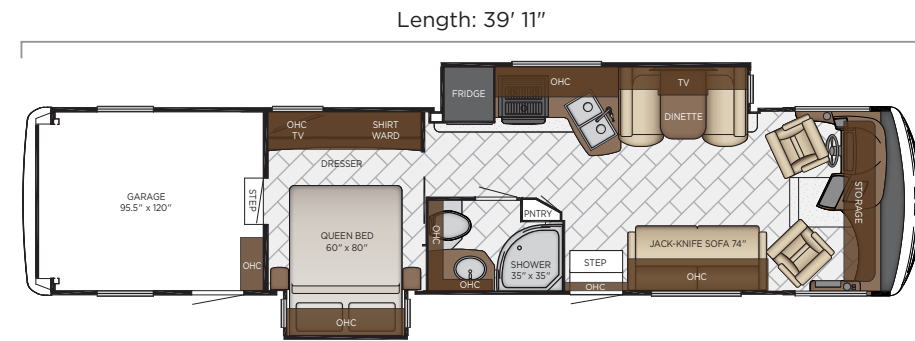
Length	39'11"	Grey Tank	60 gal.
Width	101.5"	Sewage Tank	40 gal.
App. Overall Height	12'11"	Water Tank	75 gal.
Interior Width	95.5"	Propane Tank	25 gal.
Interior Height	84"	Furnace	40,000 btu

30-inch-wide aisleway; 2016 interior/exterior design shown

INTEGRATED POWER LIFT

# LEAVE *nothing* BEHIND

The Canyon Star 3927, an updated version of our highly versatile toy hauler model, is now available with more setup options than ever before, starting with optional electric-lift bunk beds or a comfy dinette. Fitted to a high-strength ramp engineered to handle ATVs, motorcycles, and more, 3927 is covered by washable diamond tread rubber flooring.



## 3927

Length	39'11"	Grey Tank	60 gal.
Width	101.5"	Sewage Tank	40 gal.
App. Overall Height	12'11"	Water Tank	75 gal.
Interior Width	95.5"	Propane Tank	25 gal.
Interior Height	84"	Furnace	40,000 btu

WALL-MOUNTED DVD PLAYER



*Endless possibilities*

make it yours



2017 Excalibur paint shown



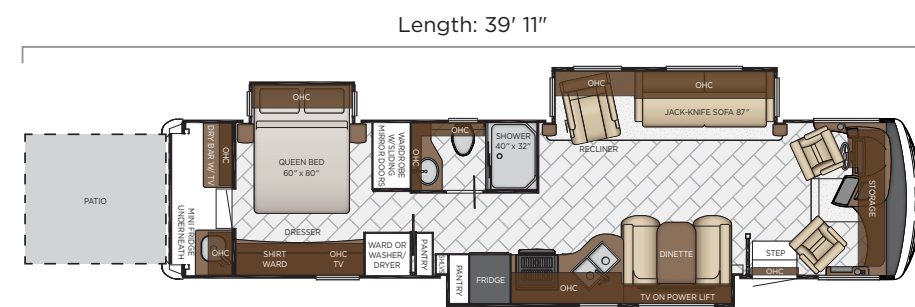
## NO more LAUNDROMAT

*New for 2019, Canyon Star 3927 can be had with an available stacked Whirlpool® washer and dryer while still leaving ample floor space for the rest of your gear. Three separate windows along with overhead lighting brighten the entire room, and a wall-mounted Sony® LED TV, foldable seats, and removable carpeting let you use 3927 as a second living area.*

OPTIONAL LAUNDRY CENTER

## ALL PLANS *on* DECK

*Canyon Star 3924 delivers a roomy and accommodating outdoor gathering space in the form of a gated patio that extends with ease and is ready in seconds. Accessible from the master bedroom or by way of drop-down steps equipped with a handrail, each patio is covered by washable diamond tread rubber flooring and fitted with a mini-fridge, microwave, storage cabinets, LED TV, and more.*



### 3924

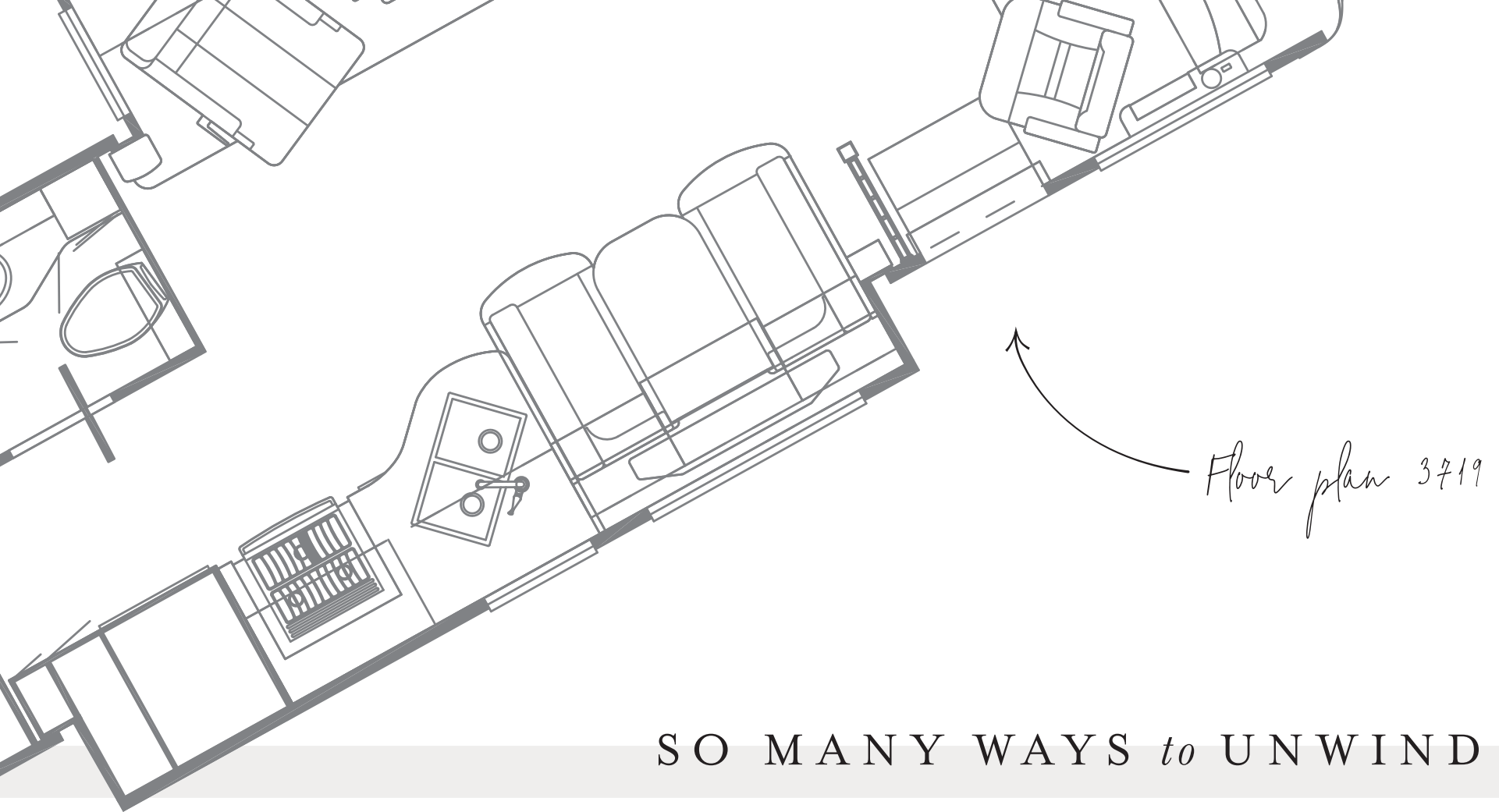
Length	39'11"	Grey Tank	60 gal.
Width	101.5"	Sewage Tank	40 gal.
App. Overall Height	12'11"	Water Tank	75 gal.
Interior Width	95.5"	Propane Tank	25 gal.
Interior Height	84"	Furnace	40,000 btu

*Your own mobile patio*



*2018 Dellwood paint shown*

STANDARD PATIO SINK



## SO MANY WAYS *to* UNWIND

*All-new for 2019, floor plan 3719 boasts four power slideouts and is packed full of creature comforts that include many of our most popular seating options, from an 87-inch jackknife Hide-A-Bed sofa to a deluxe swivel recliner. An ultra-plush dinette booth features a drop-down table that lies just below a retractable 4K LED TV, and three separate pantry spaces help keep kitchen clutter to a minimum.*

## BOHEMIAN *in* NATURE

*Madras décor fabrics showcase a robust, diamond-shaped pattern broken up by zig-zagging horizontal stripes, incorporating a natural style that adds a hint of Southwestern flair to an otherwise soft, neutral color palette. In the master bedroom, the bedspread displays both circular and heart-shaped designs that combine to present a classic floral pattern.*

*Madras décor* →



EXTERIOR *and* INTERIOR DÉCOR



EXCALIBUR EXTERIOR  
*Awning Color: Charcoal Tweed*



EXCALIBUR INTERIOR  
*a. Furniture/ Fabric b. Flooring c. Carpet d. Counter Top*



MADRAS EXTERIOR  
*Awning Color: Linen Tweed*



MADRAS INTERIOR  
*a. Furniture/ Fabric b. Flooring c. Carpet d. Counter Top*

EXTERIOR *and* INTERIOR DÉCOR



ASTORIA / WICKER  
MAPLE FLOORING



HARBOR / NEWPORT  
MAPLE FLOORING



CALYPSO / BERMUDA  
MAPLE FLOORING



ASTORIA / WICKER MAPLE

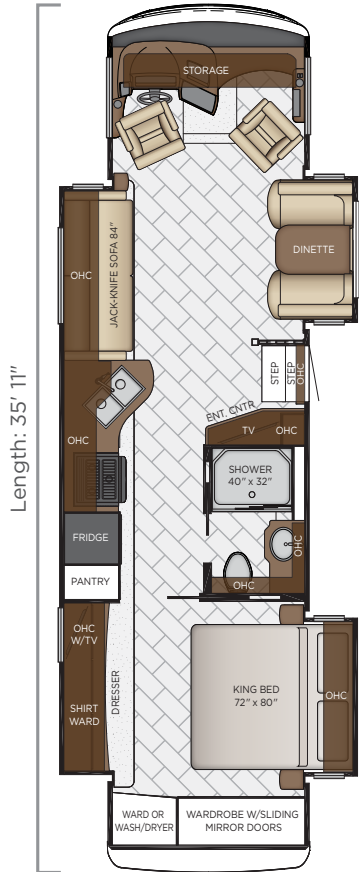


HARBOR / NEWPORT MAPLE



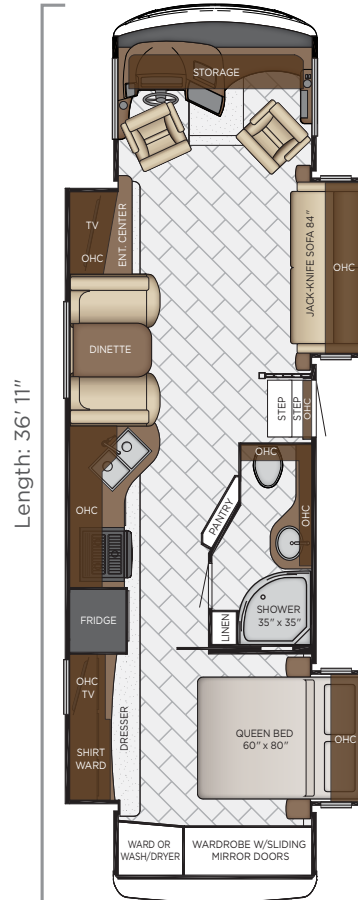
CALYPSO / BERMUDA MAPLE

# CANYON STAR



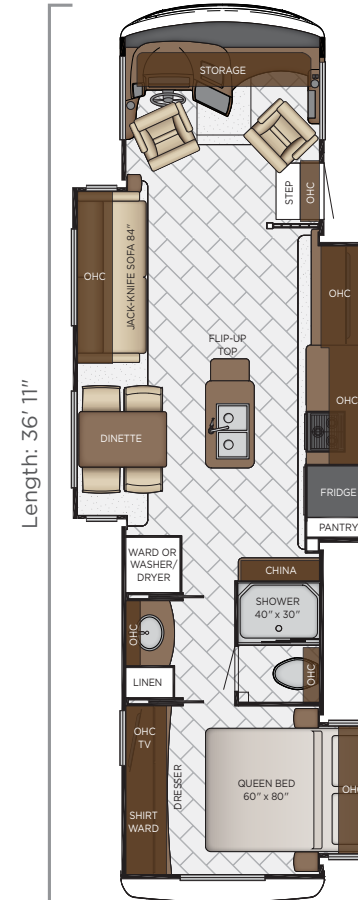
## 3513

Length	35'11"
Width	101.5"
App. Overall Height	12'11"
Interior Width	95.5"
Interior Height	84"
Grey Tank	60 gal.
Sewage Tank	40 gal.
Water Tank	75 gal.
Propane Tank	25 gal.
Furnace	40,000 btu



## 3608

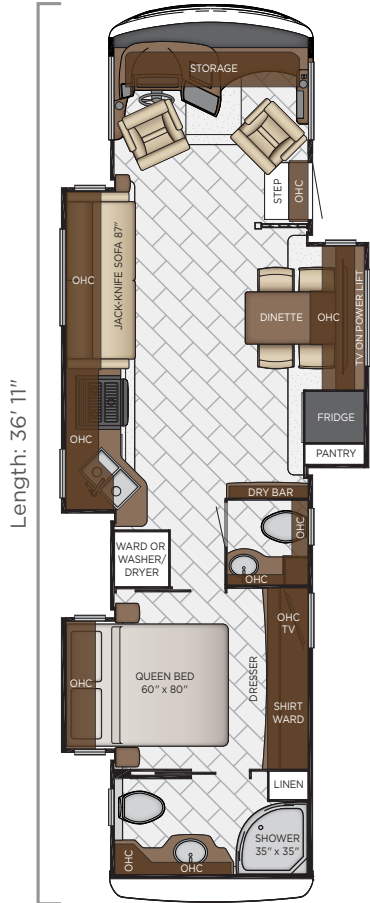
Length	36'11"
Width	101.5"
App. Overall Height	12'11"
Interior Width	95.5"
Interior Height	84"
Grey Tank	60 gal.
Sewage Tank	40 gal.
Water Tank	75 gal.
Propane Tank	25 gal.
Furnace	40,000 btu



## 3627

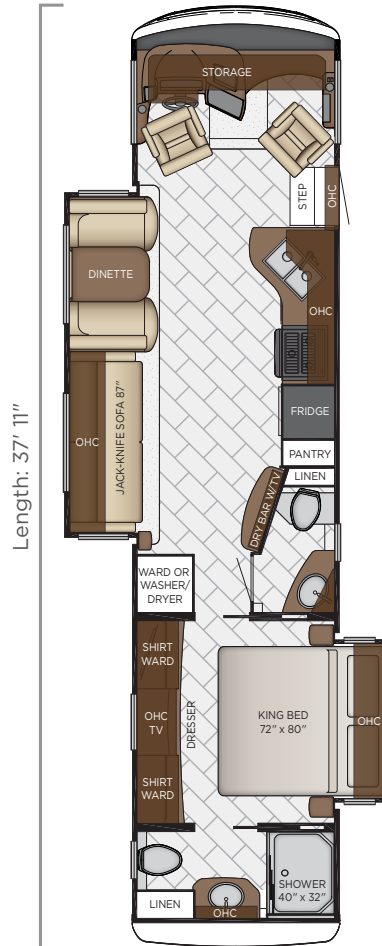
Length	36'11"
Width	101.5"
App. Overall Height	12'11"
Interior Width	95.5"
Interior Height	84"
Grey Tank	60 gal.
Sewage Tank	40 gal.
Water Tank	75 gal.
Propane Tank	25 gal.
Furnace	40,000 btu

# FLOOR PLANS



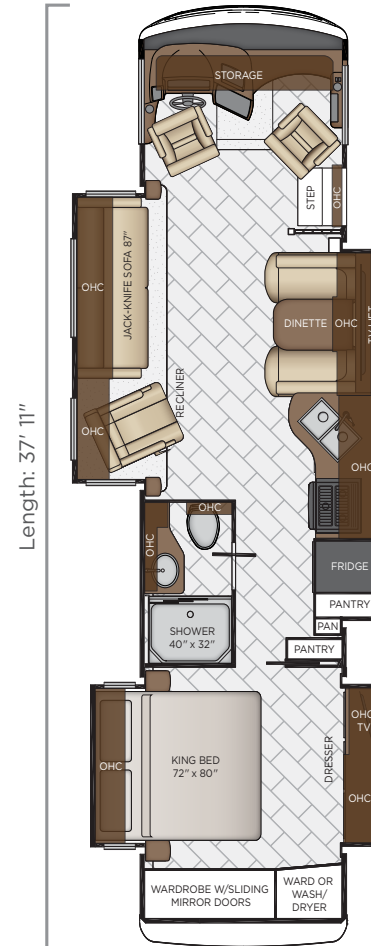
## 3646

Length	36'11"
Width	101.5"
App. Overall Height	12'11"
Interior Width	95.5"
Interior Height	84"
Grey Tank	60 gal.
Sewage Tank	92 gal.
Water Tank	75 gal.
Propane Tank	25 gal.
Furnace	40,000 btu



## 3710

Length	37'11"
Width	101.5"
App. Overall Height	12'11"
Interior Width	95.5"
Interior Height	84"
Grey Tank	60 gal.
Sewage Tank	92 gal.
Water Tank	75 gal.
Propane Tank	25 gal.
Furnace	40,000 btu

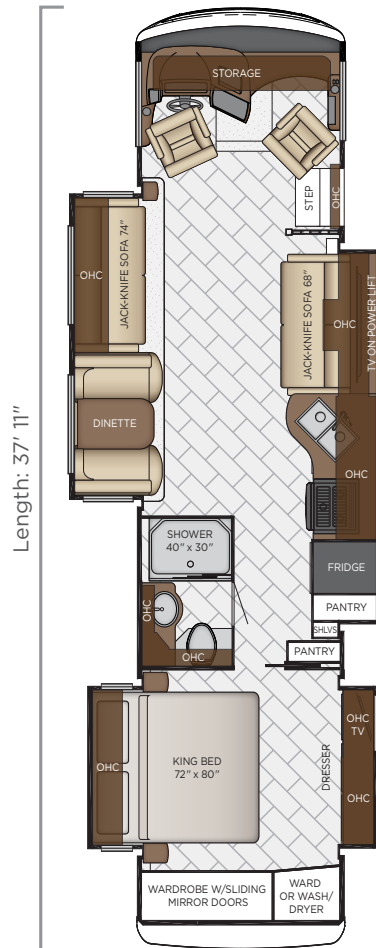


## 3719

Length	37'11"
Width	101.5"
App. Overall Height	12'11"
Interior Width	95.5"
Interior Height	84"
Grey Tank	60 gal.
Sewage Tank	40 gal.
Water Tank	75 gal.
Propane Tank	25 gal.
Furnace	40,000 btu

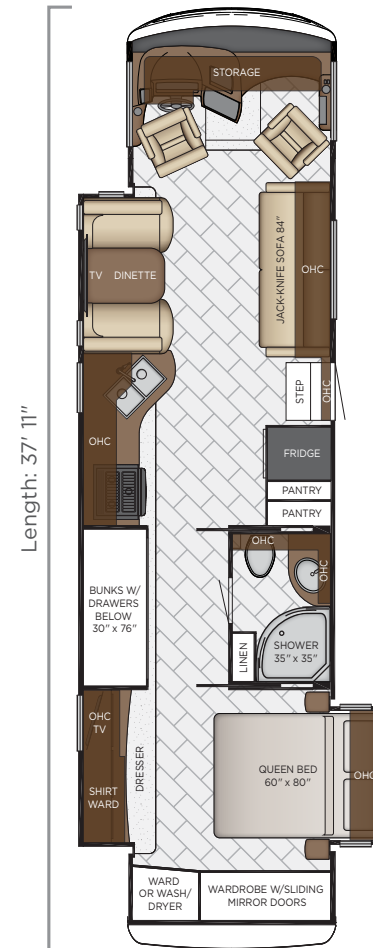


# CANYON STAR



## 3722

Length	37'11"
Width	101.5"
App. Overall Height	12'11"
Interior Width	95.5"
Interior Height	84"
Grey Tank	60 gal.
Sewage Tank	40 gal.
Water Tank	75 gal.
Propane Tank	25 gal.
Furnace	40,000 btu



## 3723

Length	37'11"
Width	101.5"
App. Overall Height	12'11"
Interior Width	95.5"
Interior Height	84"
Grey Tank	60 gal.
Sewage Tank	40 gal.
Water Tank	75 gal.
Propane Tank	25 gal.
Furnace	40,000 btu



# QUALITY YOU CAN FEEL

Like a fine home, the 2019 Canyon Star is framed 16 inches on center, and is covered by a fiberglass roof with walkable decking and an integrated gutter rail.

FLOOR PLAN	ENGINE HP	AXLE RATIO	FUEL CAP.	WHEEL BASE	FRONT GAWR	REAR GAWR	TAG GAWR	GVWR	GCWR	APP. UVW	APP. NCC
3513	320	6.17	80 gal.	234	9000 lb.	17500 lb.	n/a	26000 lb.	30000 lb.	21039 lb.	4961 lb.
3608	320	6.17	80 gal.	242	9000 lb.	17500 lb.	n/a	26000 lb.	30000 lb.	21440 lb.	4560 lb.
3627	320	6.17	80 gal.	240	9000 lb.	17500 lb.	n/a	26000 lb.	30000 lb.	20860 lb.	5140 lb.
3646	320	6.17	80 gal.	242	9000 lb.	17500 lb.	n/a	26000 lb.	30000 lb.	20787 lb.	5213 lb.
3710	320	6.17	80 gal.	242	9000 lb.	17500 lb.	n/a	26000 lb.	30000 lb.	20499 lb.	5501 lb.
3719	320	6.17	80 gal.	242	9000 lb.	17500 lb.	n/a	26000 lb.	30000 lb.	22044 lb.	3956 lb.
3722	320	6.17	80 gal.	242	9000 lb.	17500 lb.	n/a	26000 lb.	30000 lb.	22044 lb.	3956 lb.
3723	320	6.17	80 gal.	242	9000 lb.	17500 lb.	n/a	26000 lb.	30000 lb.	21426 lb.	4574 lb.
3911	320	6.17	80 gal.	260	9000 lb.	17500 lb.	n/a	26000 lb.	30000 lb.	21215 lb.	4785 lb.
3924	320	6.17	80 gal.	266	9000 lb.	17500 lb.	n/a	26000 lb.	30000 lb.	22764 lb.	3236 lb.
3927	320	6.17	80 gal.	266	9000 lb.	17500 lb.	n/a	26000 lb.	30000 lb.	21623 lb.	4377 lb.

**The content in our literature depicts and describes products that are subject to change. For the most recent images and information, please visit [NewmarCorp.com](http://NewmarCorp.com).**

Lengths, heights, widths and dry weights are approximate. Weight will vary based on optional equipment added to the above base weight.

**GAWR:** Gross Axle Weight Rating is the maximum permissible weight for an axle.

**GVWR:** Gross Vehicle Weight Rating is the maximum permissible weight for a fully loaded motor coach.

**GCWR:** Gross Combination Weight Rating is the value specified by the manufacturer of the vehicle as the maximum allowable loaded weight of this motor coach and any towed trailer or towed vehicle.

**UVW:** Unloaded Vehicle Weight is the weight of this motor coach as built at the factory with full fuel, engine oil and coolants. Does not include cargo, fresh water, propane gas or dealer-installed accessories.

**NCC:** Net Carrying Capacity is the maximum weight of all occupants, including the driver, personal belongings, food, fresh water, waste water, propane gas, tools, tongue weight of towed vehicle, dealer-installed accessories, etc., that can be carried by the motor coach.

**Specifications supplied by the chassis manufacturer.**

**Canyon Star R-Values:**

Roof R-Value = 16

Sidewall R-Value = 11

Floor R-Value = 11

# FEATURES *and* OPTIONS



## EXTERIOR



### EXTERIOR FEATURES

Full-paint Masterpiece Finish™ with Clearcoat Finish

Dura Shield Protection on Front Cap

Convex Exterior Mirrors with Defrost and Remote Control

Entrance Door with Automatic Step

Entrance Door with Automatic Triple Step in Garage\* (3927 Floor Plan)

Fueling Station in Garage\* (3927 Floor Plan)

Rear Hitch for Towing Car

Garage Rear Ramp Access Designed for ATV & Normal Clearance Motorcycle

Rear Deck, Rails and Ladder Kit on 3924

Assist Handle at Entrance Door

Wheelchair Lift on 3911 Floor Plan

Stainless Steel Exterior Trim Pieces on Front Cap and Grille Area

Chrome Exterior Baggage Door Handles

Hydraulic Leveling Jacks

Undercoating

Mud Flaps

Rear Protective Tow Guard with Stainless Newmar Letters

### OPTIONS

Rear Ladder

Flagpole Bracket

Temporary Windshield Protection - For Transport Only

### CONSTRUCTION FEATURES

BriteTEK™ Roof with Walkable Decking

5/8" Foam Insulation Laminated in Sidewalls and Ceiling

Gelcoated Fiberglass Exterior Sidewalls, Front and Rear Caps

Aluminum-Frame Sidewalls & Roof Construction, 16" on Center

Polar Pak R-19 Batten Insulation on Roof

### OPTIONS

One Piece Molded Fiberglass Roof

Power Opening Wheelchair Lift Entrance Door on 3911 Floor Plan

Exterior Kitchen on Door Side Rear of Unit (3646 Floor Plan)\*

Power Entrance Step Well Cover on 3911

Automatic Mechanical Lock Arm on Slideout Rooms - Scissor Style (3911 Only)



## WINDOWS, AWNINGS & VENTS

Frameless Double-Pane Tinted Safety Glass Windows

Fan-Tastic® Vent with Rain Sensor in Kitchen, Bathroom and 3927 Garage\*

Skylight Above Shower

Dometic® WeatherPro Side Awning with Aluminum Weather Shield

Slideout Covers

One Piece Tinted Windshield

Rear Window in Bedroom\*

### OPTIONS

Kitchen Window

Driver's Door with Power Window

Power Screen for Rear Cargo Door\*

Egress Door with Ladder System\*

## CHASSIS FEATURES

Ford® F-53 26,000 lb. Chassis

Cruise Control

Tilt Steering Wheel

Aluminum Wheels

Anti Lock Braking System

## AIR CONDITIONING & HEATING

Two 13.5M Penguin Central Air Conditioners

Dash Heater and Air Conditioner

Defrost Fans Built Into Front Overhead

Driver & Passenger Dash Overhead Ventilation System

Propane Gas Furnace with Ducted Heat

### OPTIONS

13.5M Penguin™ Air Conditioner with Heat Strip in Garage\*

Auxiliary Heater in Bedroom

## ELECTRICAL FEATURES

5.5 kW Cummins Onan® Generator with Remote Switch and Automatic Changeover

50 Amp Electrical Service with Flexible Cord and Automatic Transfer Switch

Two 12 Volt House Batteries

Battery Disconnect Switch for House Battery

12 Volt Auxiliary Recept on Dashboard

Four 12-Volt Batteries and 2000 Watt Pure Sine Inverter (3924 Only)

10 Watt Solar Panel to Charge Chassis Battery

Drain Lift Pump with 1000 Watt Inverter\*

60 Amp Converter

Daytime Running Lights

Emergency Engine Start Switch

Accent Lights in Slideout Fascia Trim

LED Ceiling Lights Throughout

Interior Courtesy Lights

Multiplex Lighting Control System

Lighted Wardrobe

Manually Operated Hold-To-Run Slideout Switch

Energy Management System

USB Charger at Passenger Seat Area and at Dash for Driver Use

Cable TV Connection

Fog Lights

Lights in Exterior Storage Compartments, Controlled by an Interior Master Switch

### OPTIONS

1000 Watt Inverter Run to TVs\*

7.0 kW Onan Generator

Power Rewind Reel with 33' Cord\*

Solar Prep with 6 Gauge Wire Run From Roof to House Battery Compartment

Transfer Switch with Surge Protector

## PLUMBING & BATH FEATURES

Demand Water System

Sewage Holding Tank Rinse

Water Heater Bypass System

Dometic® 321 China Bowl Stool

Fiberglass Shower Surround with Shower Door

Exterior Shower

Water Filter for Entire Unit

Systems Monitor Panel

Sink and Faucet in Rear Deck Room on 3924

Concerto® Electric Flush Stool on 3911



## INTERIOR FEATURES

Padded Vinyl Ceiling

Carpeting On Slideout Floors

Inlaid Six Panel Design Interior Passage Doors

Auto-Motion Power Shade at Windshield & Manual Shades at Driver/Passenger Side Windows

Auto-Motion Manual Double Roller Window Shades\*

Dash Panel Color Coordinated ABS

Decorative Wall Art\*

Quilted Bedspread and Accent Pillow

Vinyl Tile Floor in Kitchen, Bathroom & Living Area + Bedroom

Interior Assist Handle at Main Entrance Door

Shoe Storage Located in Entrance Door Step Compartment

Diamond Tread Rubber Flooring in Garage\* (3927 Floor Plan)

Tie-down Track in Garage\* (3927 Floor Plan)

Integrated Window Blind System on Entry Door

Wastebasket in Kitchen Base Under Sink

### OPTIONS

Two Wheel Chocks in Garage Area\*

Auto-Motion Power Window Shades with Remote Control on 3911

Carpet in Bedroom

Vinyl Plank Floor in Place of Vinyl Tile

## CABINETS & FURNITURE

Calypto Glazed Maple Cabinets with Mitered Designer Doors and Matte Finish

Concealed Hinges on Cabinet Doors

Polished Solid Surface Countertop in Kitchen with Under Mounted Stainless Steel and Sink Covers

Polished Solid Surface Countertops in Bathroom and Bedroom

Drawers with Full Extension Ball Bearing Guides

Pull-Out Pantry Shelves\*

Flexsteel® Ultralux Leather Sofa and Driver Passenger Seats

Dinette with Power Adjusted Table, Bench Seat & Folding Chair on 3911 Floor Plan

Six-Way Power Driver/Passenger Seats

Manual Foot Rest On Passenger Seat

Passenger Seat Work Station

Lifts on Bed Top to Access Storage Area\*

Plush Pillow Top Mattress



Extended Rotation Concealed Hinge for Washer/Dryer Cabinet Door
Lower Bed Base & Sleep Number Deluxe Mattress on 3911
Mesh Cell Phone Holder at Each Bunk Bed*
<b>OPTIONS</b>
Astoria Glazed Maple Cabinets with Mitered Designer Doors and Matte Finish
Bermuda Glazed Maple Hardwood Face Frame Cabinets with Mitered Designer Doors-Matte Finish
Harbor Glazed Maple Cabinets with Mitered Designer Doors and Matte Finish
Wicker Glazed Maple Hardwood Face Frame Cabinets with Mitered Designer Doors and Matte Finish
Newport Glazed Maple Hardwood Face Frame Cabinets with Mitered Designer Doors and Matte Finish
Combination Desk/Dinette with Free Standing Hidden-Leaf Table with Four Chairs
Combination Desk with Buffet Table (Two Fixed/Two Folding Chairs)*
Combination Desk/Dinette with Roll Away Table (Two Fixed/Two Folding Chairs)*
Free Standing Hidden Leaf Dinette Table with Four Chairs (Two Fixed/Two Folding Chairs)*
Dinette with Roll Away Table*
Hide-A-Bed Sofa with Innerspring Mattress*
Drop-Down Bunk Bed Over Driver/Passenger Seats with Electric Release Latches & 32" TV in Front Overhead and Bunk Ladder*
Drop -Bunk Bed Over Driver/Passenger Seats with Electric Release Latches and Bunk Ladder*
Sleep Number® R5 Square Corner Air Mattress
Flexsteel® Euro Booth Dinette*
Full Height Bed Base on 3911
Full Height Power Incline Retracting Bed Base on 3911
Power Incline Retracting Bed Base with Sleep Number® Air Mattress
Electric Lift Bunk Beds with Removable Rug in Garage*
Electric Lift Bunk Beds with Seating, Pedestal Table and Removable Floor Rug in Garage*
87" Bunk Sofa*
Buffet Dinette*
Buffet Dinette with Free Standing Table*
Side Folding Hide-A-Bed Sofa with Innerspring Mattress*
Powered Theater Seating*
Two Ottomans*
2 Recliners Off Door Side, Fold-N-Tumble Door Side (3722 Only)*

**APPLIANCES & ACCESSORIES**

Three-Burner Recessed Range with Oven*
Norcold® 10 Cf. Refrigerator
Raised Panel Refrigerator Door Insert Panel
30" Over the Range Microwave Oven*
Flush Gas Cooktop Cover of Matching Countertop Material
10 gal. Gas/Electric Water Heater Direct-Spark Ignition
Microwave and Refrigerator in Rear Deck Room on 3924
<b>OPTIONS</b>
30" Convection Stainless Steel Microwave with Three-Burner Gas Cooktop and Dishwasher
30" Convection Stainless Steel Microwave with Three-Burner Gas Cooktop with Piezo Ignition
30" Convection Stainless Steel Microwave in Kitchen Overhead with Drawer Below Cooktop on 3911
Norcold® 12 Cf. Four-Door Refrigerator with Icemaker
Icemaker Added to Standard Norcold Refrigerator with Heated Water Line
Icemaker Added to Standard Norcold® Refrigerator
Whirlpool 19.7 Cf. Refrigerator, 2000 Watt Pure Sine Inverter and Six-6 Volt Batteries*
Whirlpool 19.7 Cf. Refrigerator with Six-6 Volt Batteries (2000 Watt Inverter Standard)*
Whirlpool 11 Cf. Refrigerator with Dedicated 1000 Watt Pure Sine Inverter & Two Extra Batteries and Icemaker*
Whirlpool 11 Cf. Refrigerator with Dedicated 1000 Watt Pure Sine Inverter & Two Extra Batteries*
Whirlpool® Two Piece Stacked Washer & Dryer
Whirlpool® Two Piece Stacked Washer & Dryer in Garage on 3927 Floor Plan
Prep for Two Piece Washer/Dryer
Prep for Two Piece Washer/Dryer in Garage on 3927 Floor Plan (No Cabinets)
Central Vacuum with Tool Kit
Electric Fireplace in Living Area*
110 Volt Heat Pads for Holding Tanks



**AUDIO, VIDEO & ACCESSORIES**

Vizio LED TV and DVD Player in Living & Bedroom Area (TV Sizes Vary Per Floor Plan)
Bose® Solo 5 Soundbar Sound System
AM/FM/CD Dash Radio with Harman/JBL 180 Watt Sound System
Exterior AM/FM/DVD Radio with Two Speaker Inside 3927 Garage Area & Two Outside Speakers*
High Definition Component Wiring
Rearview Color Monitor System with Audio
Side-view Cameras Displayed onto Rearview Monitor Screen with Smart Phone Connection
Winegard Digital Crank-Up TV Antenna
Two Bedroom Radio Speakers with On/Off Switch
Satellite Prep on Roof
TV Jack and 110 Volt Recept in Door Side Exterior Storage Compartment
Two Blu-ray Disc Players
Bluetooth Microphone for Sony® Dash Radio
10 Bc Fire Extinguisher, Smoke Detector, Propane and Carbon Monoxide Detector
10 Bc Fire Extinguisher in Garage 3927 Floor Plan
<b>OPTIONS</b>
SiriusXM® Satellite Radio with Antenna (Does not include monthly subscription)
Vizio 43" LED TV in Front Overhead*
Vizio 49" Televator TV with Fireplace in Place of Front Overhead TV on 3911
Winegard® Automatic Dome Satellite Dish
Winegard Automatic Open Face Dish
Winegard In Motion Dome Satellite Dish
Winegard Rayzar Automatic Digital TV Antenna
Winegard Automatic Open Face SWM Satellite Dish
Winegard Cellular In Motion WIFI Requires Cellular Subscription Through Winegard
Vizio 32" LED TV in Garage*
Exterior Entertainment Center in Sidewall with Vizio 32" LED TV and Radio*
Exterior Entertainment Center in Storage Compartment with Vizio 32" LED TV and Radio*
WiFiRanger Sky3 Pack Router
Xite Dash Radio, 6" Monitor with Rand McNally Navigation
Two 11" LCD Flip Down Monitor/DVD Player with Headphone at Each Bunk*
WiFiRanger SkyPro LTE Cellular Router

\*Check with dealership on floor plan availability.

The content in our literature depicts and describes products that are subject to change. For the most recent images and information, please visit [NewmarCorp.com](http://NewmarCorp.com).

# THE NEWMAR CUSTOMER EXPERIENCE

*The Newmar difference goes beyond our industry-leading motor coaches to deliver you with an unrivaled ownership experience.*



## QUALITY FROM THE START

*Every Newmar is crafted one at a time by folks who have spent an average of eight years building them. And each coach we assemble must undergo more than 1,000 tests and checks before ever leaving our factory.*



## CAREFULLY SELECTED DEALERS

*We view our dealership network in terms of quality, not quantity. Each of our dealers acts as a partner in our shared mission to exceed your highest of expectations, for an ownership experience that's second to none from day one.*



## EVERYTHING IN ONE PLACE

*As a Newmar owner, you'll find resources specific to your coach through Newgle, an easy-to-use knowledge base that houses everything from user guides to technical support documents.*



## FRIENDS FOR LIFE

*Meet fellow owners through the **Newmar Kountry Klub**, a top social club for RV travelers that hosts rallies and other special events throughout the U.S. and Canada.*



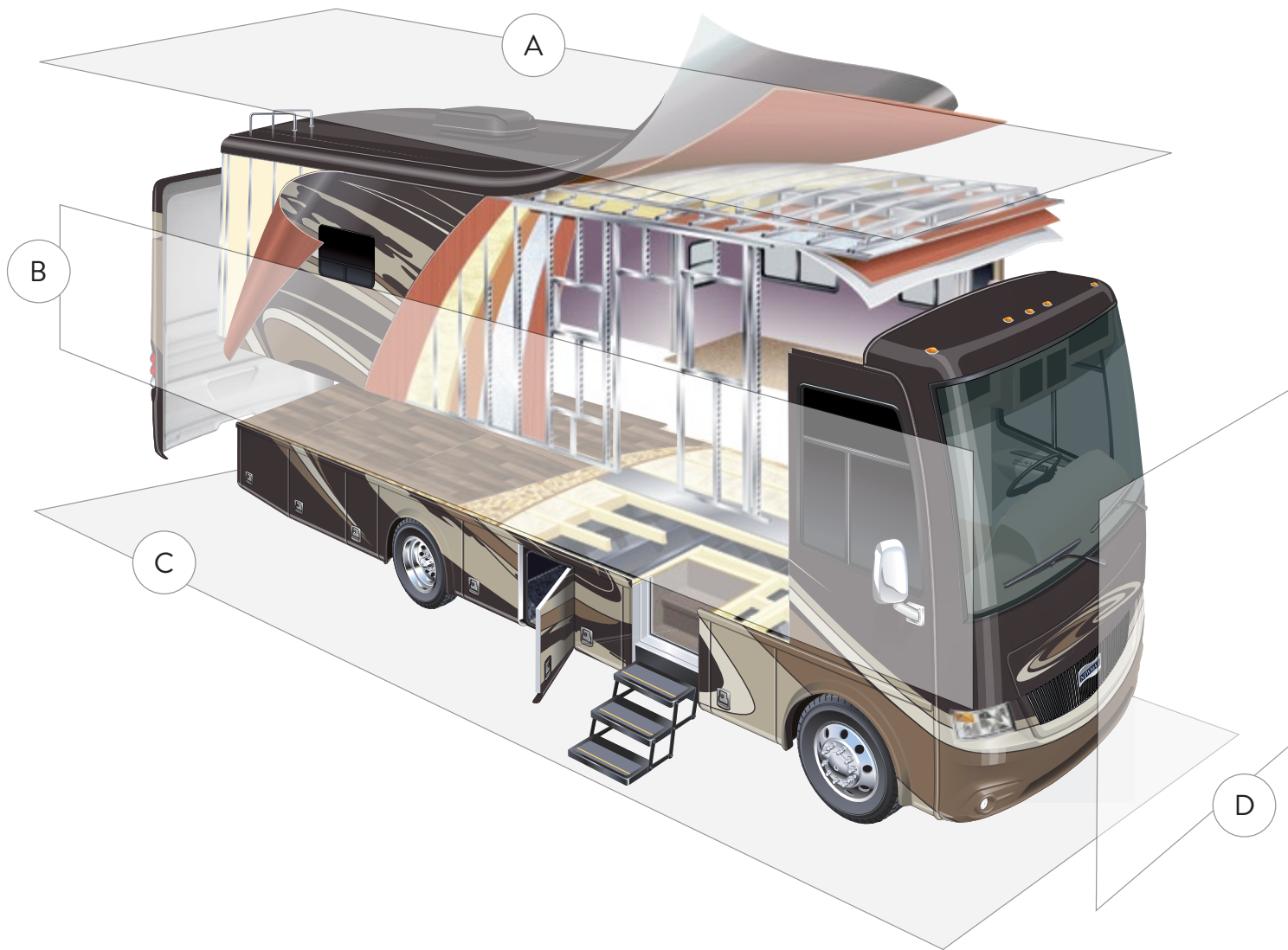
## SEAMLESS SERVICE

*When you join the Newmar family, we pair you with a dedicated service specialist with expert knowledge of your exact coach. Available 24/7, our service specialists guarantee dealer warranty authorizations within four business hours and ship all in-stock parts the same day, free of charge.*



## ROCK-SOLID PROTECTION

*All models include a one-year/unlimited mileage limited warranty and a five-year, non-transferable structural warranty that covers your coach's superstructure in the event it fails to perform. **Ask your Newmar dealer for more details.***



## A. ROOF

---

*BriteTEK™ Roof with Walkable Decking*

*Batten Insulation*

*A/C Ducting*

*16" on Center Aluminum Rafter Framing*

*Kraft Paper Vapor Barrier*

*5/8" Bead Foam*

*3/16" Panel*

*Padded Vinyl Overlay*

## B. SIDEWALL

---

*Interior Wall Panel*

*5/8" Bead Foam*

*Kraft Paper Vapor Barrier*

*Batten Insulation*

*Composite One-Piece*

*Gelcoat Exterior Sidewall*

*Aluminum Framing*

## C. FLOOR

---

*Vinyl Tile*

*16" on Center Wood Framing*

*5/8" Floor Decking*

*Polyethylene Moisture Barrier*

*Fiberglass Batten Insulation*

## D. EXTERIOR

---

*13.5M Penguin™ Central Air Conditioners*

*One-Piece Bonded Windshield*

*Coated Aluminum Wheels*

*Frameless, Double-Pane, Tinted Safety Glass Windows*

*Side-Hinged Baggage Doors*



# OUR PARTNERS

*Newmar Quality Begins With The Company We Keep*

*You deserve class-leading performance from names you can trust. That's why we only work with suppliers dedicated to providing our customers with unrivaled quality, comfort, and support.*



## BASF

*The Coatings division of BASF is a global expert in the development and production of innovative and sustainable OEM and refinish coatings that deliver solutions beyond your imagination.*



## INDUSTRIAL FINISHES

*Industrial Finishes has supported RV manufacturers for over four decades. The Industrial Finishes paint process delivers uncompromising quality, providing your coach with a true "Masterpiece" finish.*



FLEXSTEEL®  
RECREATION

## FLEXSTEEL RECREATION

*Flexsteel Recreation offers innovative furniture designed for a life that rarely sits still. Comfortable and space-saving, Flexsteel furniture ensures your RV is always ready for dining, sleeping, or hosting guests.*



## SONY

*Beautifully designed Sony TVs and Blu-ray players combine to deliver an immersive picture and true-to-life sound. Revolutionize every aspect of your in-coach entertainment experience with Sony.*



Driven By You

## FREIGHTLINER CUSTOM CHASSIS

*Freightliner Custom Chassis are renowned for their exceptional ride, excellent maneuverability, advanced chassis technology, and nationwide 24/7 factory-direct support.*



## SPARTAN MOTORS

*Spartan Motors is an American company with over 30 years of experience designing and manufacturing the premier motorhome chassis, which provides superior performance, exceptional safety ratings, and industry-leading technology.*



## OUR PEOPLE MAKE *the* DIFFERENCE

*Newmar was founded in 1968 for one simple reason:  
to build a better RV.*

*Since then, we've focused our efforts and energy on creating  
residential-quality "homes on wheels," complete with  
handmade cabinetry and designer décors.*

*And every Newmar is handcrafted one at a time by men and  
women who have spent an average of eight years assembling  
them, resulting in superior-quality coaches that fully surpass  
their mass-produced competition.*

*Here, we don't just take the responsibility of designing,  
engineering, and constructing your motorhome seriously, we  
take it personally. Because in the end, our goal is not to win  
your trust, but earn it. Not once, but every single time you  
hit the road.*

*Join us, and discover the Newmar difference for yourself.*



WHEN YOU KNOW  
*the* DIFFERENCE



*Newmar Corporation | 355 N Delaware St | PO Box 30 | Nappanee, IN 46550-0030 | 574-773-7791 | Fax 574-773-2895*

*NewmarCorp.com*