



HOLIDAY RAMBLER®

DREAM LIFESTYLE | FAMILY AMENITIES | FULL-TIME FUN

[www.holidayrambler.com](http://www.holidayrambler.com)

# VACATIONER

2018.5 HOLIDAY RAMBLER CLASS A GAS

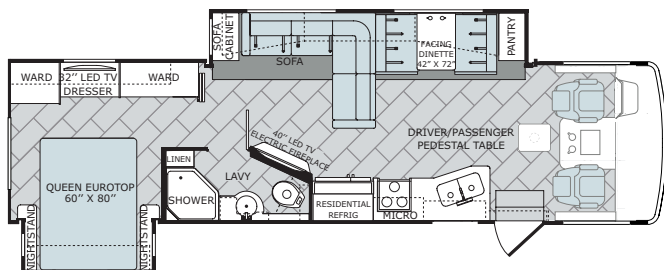


OUR VEHICLES CONNECT AND PROTECT  
PEOPLE AROUND THE WORLD EVERYDAY.  
[www.revgroup.com](http://www.revgroup.com)



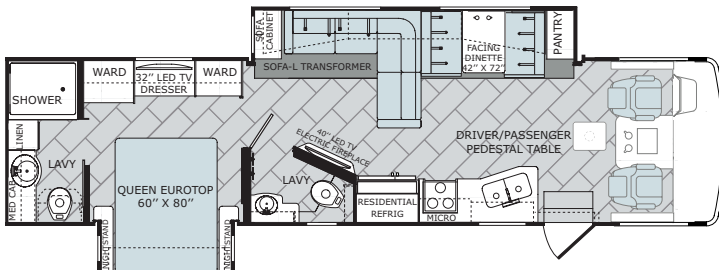
# FLOORPLANS

33C



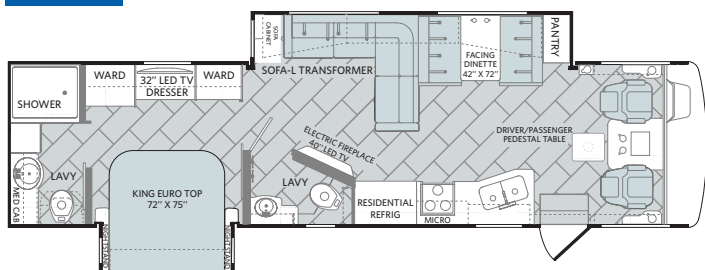
AVAILABLE OPTIONS: 113, 126, 194, 220, 833

34S



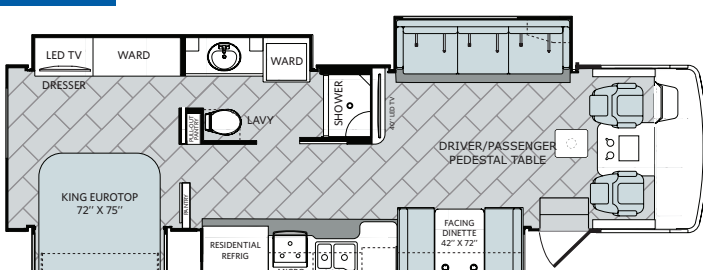
AVAILABLE OPTIONS: 113, 126, 194, 220, 833

35K



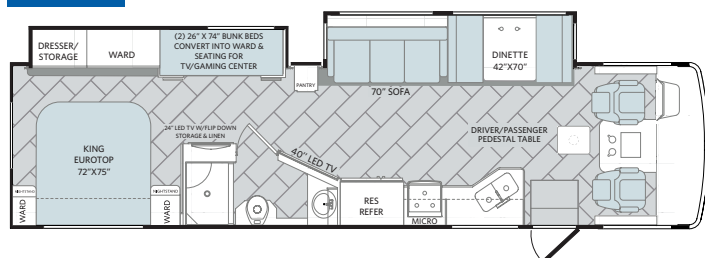
AVAILABLE OPTIONS: 113, 126, 194, 220, 833

35P



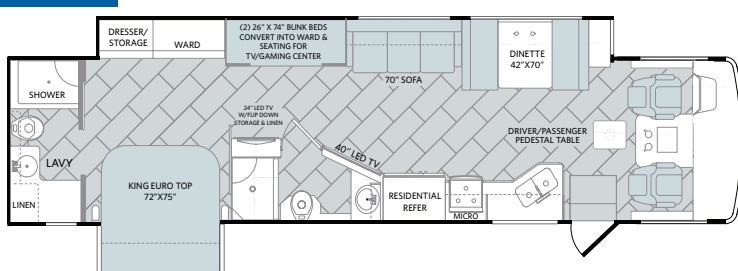
AVAILABLE OPTIONS: 113, 131, 208, 220, 833

36D



AVAILABLE OPTIONS: 113, 194, 220, 833

36F



AVAILABLE OPTIONS: 110, 113, 126, 194, 220

## EXTERIOR OPTIONS



Celestial



Harbor



Spectrum

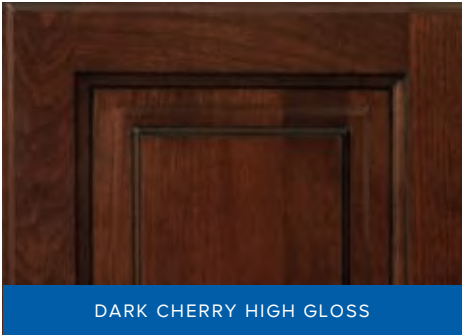
**IMPORTANT—PLEASE READ:** Product information, photography and illustrations included in this publication were as accurate as possible at the time of printing. For further product information and changes, please visit our website at [www.holidayrambler.com](http://www.holidayrambler.com) or contact your local Holiday Rambler dealer. Prices, materials, design and specifications are subject to change without notice. All weights, fuel, liquid capacities and dimensions are approximate. Holiday Rambler has designed its recreational vehicles to provide a variety of uses for its customers. Each vehicle features optimal seating, sleeping, storage and fluid capacities. The user is responsible for selecting the proper combination of loads (i.e., occupants, equipment, fluids, cargo, etc.) to ensure that the vehicle's capacities are not exceeded.

©2017 REV Group Inc. Printed in USA. Inventory Control Number VACATIONER\_SalesWN18S1, 03/17. Model Year 2018, First Edition.

# DECOR



1 SOFA    2 LIVING ACCENT    3 BEDSPREAD    4 COUNTERTOP    5 FLOORING    6 CARPET



DARK CHERRY HIGH GLOSS



ITALIAN SIENNA HIGH GLOSS



WHISPERING WIND



YOUR LOCAL DEALER



HOLIDAY RAMBLER®

## WEIGHTS & MEASURES

MODEL	33C	34S	35K	35P	36D	36F
Wheelbase (inches)	208"	228"	228"	252"	228"	242"
Front GAWR (lbs) <sup>2</sup>	8,000	8,000	8,000	9,000	8,000	8,000
Rear GAWR (lbs) <sup>2</sup>	15,000	15,000	15,000	15,500	15,000	15,000
GCWR (lbs) <sup>3</sup>	26,000	26,000	26,000	30,000	26,000	26,000
Hitch Rating Weight (lbs) <sup>†</sup>	5,000	8,000	5,000	5,000	8,000	8,000
Tongue Weight (lbs) <sup>*</sup>	500	500	500	500	500	500
Fuel Capacity (gal)	80	80	80	80	80	80

## FORD® CHASSIS

Model: Ford

Engine: 6.8L Triton V10

Transmission: Ford 6-Speed, Automatic w/Overdrive

Alternator: 175 Amp

Torque: 460 lb.-ft. @ 3,000 RPM

Horsepower: 320 HP @ 3,900 RPM

## DIMENSIONS & CAPACITIES

MODEL	33C	34S	35K	35P	36D	36F
Overall Length (inches) <sup>†</sup>	34' 3"	36' 3"	36' 3"	36' 3"	36' 3"	38' 9"
Overall Height with A/C)	12' 10"	12' 10"	12' 10"	12' 10"	12' 10"	12' 10"
Overall Width (maximum) <sup>5,6</sup>	102"	102"	102"	102"	102"	102"
Interior Height (maximum)	84"	84"	84"	84"	84"	84"
Interior Width (maximum)	96"	96"	96"	96"	96"	96"
Patio Awning Width	18'	18'	18'	15'	18'	18'
Interior Storage (cu. ft.)	123	150	126	144	204	171
Exterior Storage (cu. ft.)	160	148	180	138	130	170
Fresh Water Holding Tank (gal)	100	100	100	100	100	100
Grey Water Holding Tank (gal)	58	45	58	46	45	90
Black Water Holding Tank (gal)	42	50	42	30	50	50
Appliance Propane Tank (gal) (WC) <sup>7</sup>	25	25	25	25	25	25
Water Heater Tank (gal)	10	10	10	10	10	10



Holiday Rambler is part of REV Recreation Group, a division of REV Group, Inc., a family of 29 industry-leading motor vehicle brands. At REV Group, we innovate, design and build products that connect and protect thousands of people every day—our trusted vehicles are engineered with the utmost rigor and precision to deliver the highest levels of performance, reliability, durability and safety.

### DISCLAIMER

1. GVWR (Gross Vehicle Weight Rating) is the maximum permissible weight of this fully loaded motorhome. The GVWR is equal to or greater than the sum of the (UVW) unloaded vehicle weight plus the (OCCC) occupant cargo-carrying capacity\*.

2. GAWR (Gross Axle Weight Rating) is the maximum permissible loaded weight a specific axle is designed to carry.

3. GCWR (Gross Combined Weight Rating) is the value specified by the motorhome manufacturer as the maximum allowable loaded weight of this motorhome with its towed vehicle. Towing and braking capacities may be different. Refer to Holiday Rambler and chassis manufacturer's manuals for complete information.

4. Length measured from front bumper to rear bumper (excludes accessories).

5. Excludes safety equipment and awnings.

6. Motorhomes feature a body width over 96" which will restrict your access to certain roads. Before purchasing, you should research any state and/or province road laws which may affect your usage.

7. Tank manufacturer's listed water capacity (WC). Actual propane capacity is 80% of water listing as required by the safety code.

\* The chassis manufacturer recommends the installation of a supplemental brake control system to activate the brakes on the vehicle or trailer you are towing. Hitch receiver ratings expressed are maximum for the hitch receiver installed and may require the purchase of additional equipment that is dependent on the weight of the towed load. Consult with hitch receiver manufacturer for further information.

\* UVW and OCCC are found on the label containing the federal certification tag in each RV.

\*\* The Minimum Towable Load of this vehicle is the available weight capacity, up to GCWR, when the coach is fully loaded to maximum GVWR. However, if the coach is loaded to something less than maximum GVWR, that extra available weight capacity can be added to your Towable Load. For example, if your coach is loaded to 1000lbs less than maximum GVWR, your Towable Load increases accordingly. Do not exceed the hitch rating weight, GVWR or GCWR.

\*\*\* Seatbelts and locations are shown in the brochure for display purposes only. Actual numbers and locations will vary by model.

\*\*\* All 2017 REV Recreation Group motorhomes include a limited one-year/15,000-mile coach warranty and three-year/45,000-mile structural warranty, whichever occurs first, and is fully transferable for the first 12 months.

### CONTACT US

To locate a dealer near you, visit our website at [www.holidayrambler.com](http://www.holidayrambler.com) or call 1-877-252-4666. We can also be contacted at Holiday Rambler Customer Relations, P.O. Box 1007, Decatur, IN 46733.

**IMPORTANT—PLEASE READ:** Product information, photography and illustrations included in this publication were as accurate as possible at the time of printing. For further product information and changes, please visit our website at [www.holidayrambler.com](http://www.holidayrambler.com) or contact your local Holiday Rambler dealer. Prices, materials, design and specifications are subject to change without notice. All weights, fuel, liquid capacities and dimensions are approximate. Holiday Rambler has designed its recreational vehicles to provide a variety of uses for customers. Each vehicle features optimal seating, sleeping, storage and fluid capacities. The user is responsible for selecting the proper combination of loads (i.e., occupants, equipment, fluids, cargo, etc.) to ensure that the vehicle's capacities are not exceeded.

[www.holidayrambler.com](http://www.holidayrambler.com)

©2017 REV Group, Inc. Printed in the USA. Inventory Control Number VAC18F1, 10/17. Model Year 2018, First Edition.