

FOREST RIVER
HYPER-LYTE
HEMISPHERE



TRAVEL TRAILERS AND FIFTH WHEELS





26BHKHL



HYPER-LYTE
TRAVEL TRAILERS



26BHKHL FRONT TO BACK VIEW

FOREST RIVER HYPER-LYTE HEMISPHERE

DENVER MATTRESS

RESIDENTIAL COMFORT FOR YOUR RV

- HIGH DENSITY FOAM CORE
- LUXURIOUS EURO-TOP FOR ADDED COMFORT
- LUXURY STRETCH KNITTING
- MADE IN THE U.S.A.

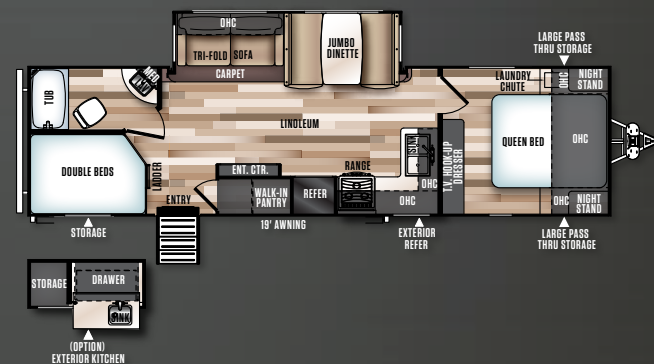


26BHKHL BEDROOM

JAGGER DECOR



26BHKHL KITCHEN AREA



26BHKHL FLOORPLAN



29RLSHL



HYPER-LYTE
FIFTH WHEELS



29RLSHL FRONT TO BACK
(SHOWN WITH OPTIONAL 40" TV)

FOREST RIVER
HYPER-LYTE
HEMISPHERE



29RLSHL BACK TO FRONT

JAGGER DECOR



29RLSHL FLOORPLAN



29RLSHL MASTER SUITE

FOREST RIVER HYPER-LYTE HEMISPHERE

15 FANTASTIC FEATURES



High rise faucet with pullout sprayer



30" Radius main entry door



Jumbo booth dinette with plywood core top (select models)



Load-N-Go collapsible storage bins (select models)



Modern roller shades with decorative valance



Tinted safety glass windows



Tri-fold, E-Z set up sleeper sofa



Painted gel coat fiberglass front cap with light strips on Fifth Wheels, won't fade, chalk or crack



All cabinet doors feature hidden hinges



Convenient laundry chute directly to pass thru storage



Wide track suspension with aluminum rims (Travel trailers only)



Docking station with quick winterization feature (Fifth wheels only)



Blue LED lighted marine grade exterior speakers



One touch electric awning with "Quick Pitch"



Slam latch baggage doors with magnetic catches



LIMITED EDITION PACKAGE



FURRION BACK UP CAMERA PREP



GREEN PACKAGE
FURRION SOLAR PANEL PREP WITH LED LIGHTS AND LED AWNING LIGHTS



FURRION CD/DVD/USB PLAYER WITH BLUETOOTH

PEOPLE ARE OUR #1 PRIORITY!

Without our employees, dealers and valued customers, we would not have a product or a lifestyle to provide. We are equipping our units with **9 FREE** bonus gifts valued at **\$3,241.00** to show our appreciation to our customers and dealers for keeping our employees working. Get excited for the camping season and purchase one of the select units outfitted with this **FREE** package.



PUSH BUTTON REMOTE
OPERATES: AWNING, SLIDES, LED AWNING LIGHTS, POWER STAB JACKS



HIGH RISE FAUCET WITH PULL OUT SPRAYER



RECESSED STOVE WITH GLASS STOVE COVER



DENVER MATTRESS



POWER TONGUE AND STAB JACKS
POWER TONGUE JACK IS NOT INCLUDED ON 5TH WHEELS

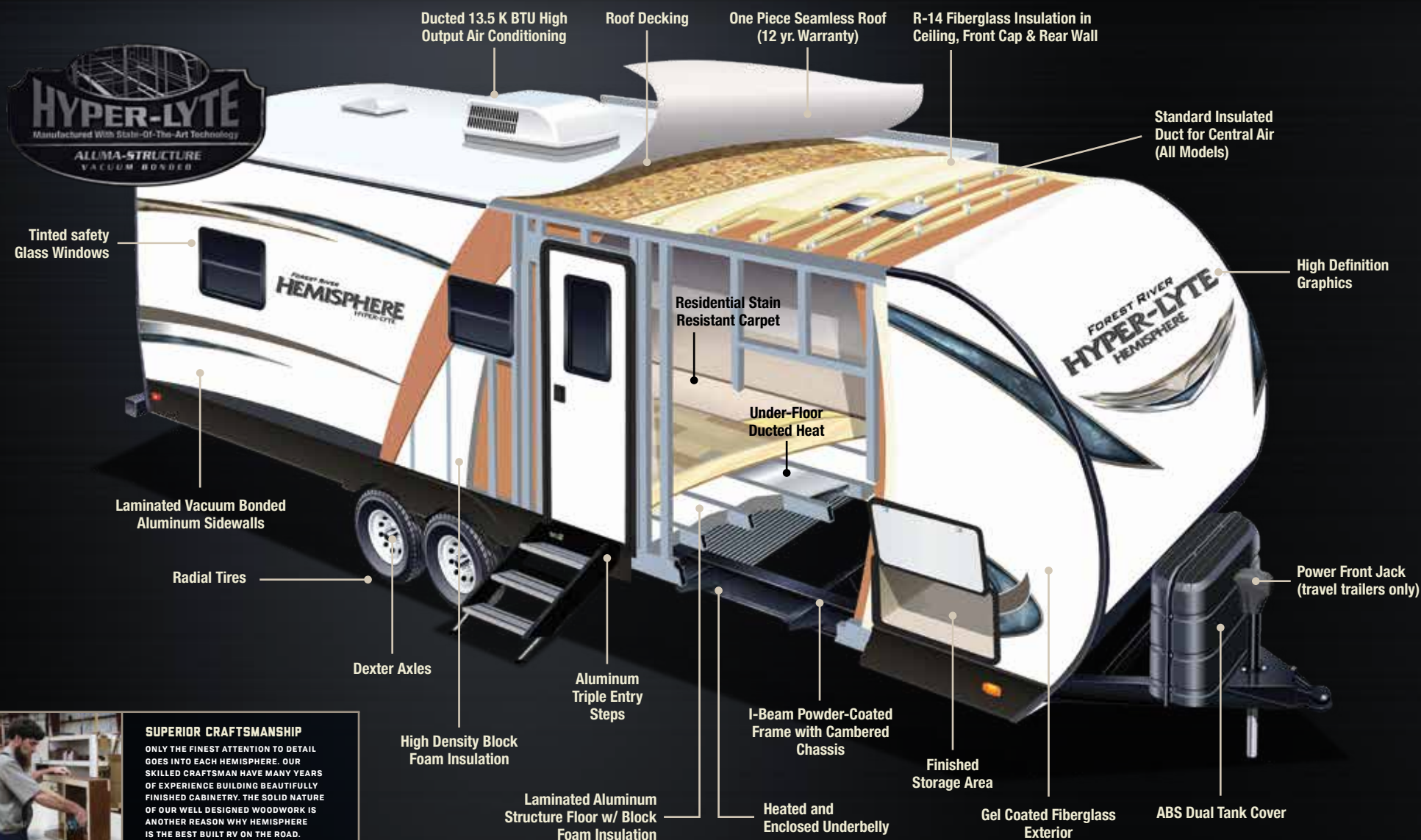


SOLID-STEP, ALUMINUM ENTRY STEPS (MAIN ENTRY)

HYPER-LYTE CONSTRUCTION



The Salem Hemisphere has a Welded Aluminum Superstructure that is regarded as the Industry's finest.



SUPERIOR CRAFTSMANSHIP
ONLY THE FINEST ATTENTION TO DETAIL GOES INTO EACH HEMISPHERE. OUR SKILLED CRAFTSMAN HAVE MANY YEARS OF EXPERIENCE BUILDING BEAUTIFULLY FINISHED CABINETRY. THE SOLID NATURE OF OUR WELL DESIGNED WOODWORK IS ANOTHER REASON WHY HEMISPHERE IS THE BEST BUILT RV ON THE ROAD.



HYPER-LYTE SERIES

STANDARDS AND OPTIONS

HYPER-LYTE CONSTRUCTION/ EXTERIOR FEATURES

- Dexter Axles w/ 15" Radial Tires & Aluminum Wheels
- Aerodynamic Fiberglass Front End
- Wide Track Suspension (Travel Trailers only)
- 4 Sided Aluminum-Framed Vacuum-Bonded Construction
- Gel Coated Fiberglass Exterior
- Laminated Sidewalls
- Laminated Floor w/ In-Floor Heat
- Solid Step Aluminum Entry Steps (Main Entry Door)
- 30" Smooth Fiberglass Radius Main Entry Door w/ Tinted Window and Shade Prep (26" Secondary)
- Swing Arm Entry Assist Handle
- Extra Large Full Pass-Thru Storage (per floorplan)
- One Touch Electric Awning w/ Adjustable Legs (1 year warranty)
- Marine Grade Exterior Speakers w/Blue LED Light
- Exterior TV Bracket w/ Cable and Power Outlet
- Upgraded ABS Fender Skirts
- Interior Grab Handle at Entry Door
- Powder Coated I-Beam Frame
- Cambered Chassis
- Water Heater By-Pass
- Norco Cable Slide Out Systems
- 16 Gal. per hour G/E Quick Recovery DSI Water

- Heater (2 year warranty)
- Stabilizer Jacks
- One Piece Seamless Roof (12 Year Warranty)
- Tinted Safety Glass Windows
- Black Tank Flush

KITCHEN

- Dometic® Double Door Refrigerator (2 Year Warranty)
- Residential, Double Bowl Sink
- Bamboo Cutting Board/ Sink Cover
- Microwave w/ Carousel (1 Year Warranty)
- High Rise, Pull-Out Sprayer Faucet
- Vented Range Hood w/ Light
- Beauflor® Plank Wood Linoleum
- Solid Wood Drawer Fronts w/ Full Extension Ball Bearing Guides
- Solid Wood Raised Upper Panel Doors
- Large Overhead Cabinets (per Floor Plan)
- Wall-Mounted Systems Monitor Panel
- Satin Nickel Hardware

LIVING ROOM

- Satin Nickel Hardware
- 13,500 BTU Ducted Roof Air Conditioner w/ Quick Cool (2 Year Warranty)
- Residential Stain Resistant Carpet
- Recliners (Per Floorplan)
- Residential Roller Shades with Decorative Valance
- Deluxe Dinette Tabletop

- Solid Wood Drawer Fronts
- Extra Large 74" Jumbo Dinette (Per Floorplan)
- Large Dinette Picture Window
- Winegard® TV Antenna
- Cable TV and Satellite Prep
- Decorative Dinette Light
- 30k BTU Suburban Forced Air DSI Furnace (2 Year Warranty) w/ Digital Thermostat
- Under Floor Heat Ducting
- Tri-Fold Hide-a-Bed Sofa w/ Storage and X-Large Throw Pillows (Most Models)
- Laundry Hamper (Most Models)
- 32" HD TV and CD/DVD/ AM/FM w/ MP3 Hookup and Surround Sound

BEDROOM

- Denver Mattress (60" X 74")
- Strut Lifted Storage Area Under Bed
- Huge Storage Drawers in Travel Trailer Bed Base (Most Models)
- Load-N-Go Collapsible Storage Bins Under Bed Base (Most Models)
- Oversized Bunks (Per Floorplan)
- Solid Bedroom Privacy Doors
- Mirrored Wardrobes w/ Two Nightstands and Outlets (Most Models)

BATHROOM

- 12-Volt Power Bath Roof Exhaust Vent
- Huge Residential Shower

- w/ Glass Door Surround (Most Models)
- Wooden Medicine Cabinet w/ Mirrored Door
- Dometic® Foot Flush Toilet
- Vinyl Tub Surround

SECURITY AND SAFETY

- LP Leak Detector
- Smoke Detector
- Carbon Monoxide Detector
- Fire Extinguisher
- Welded Heavy Duty Safety Chains (Travel Trailers)
- Electric Brakes (all wheels)
- GFI Receptacles
- ANSI 119.2
- Certified to Meet National Highway Traffic Safety Administration Specifications

HYPER-LYTE OPTIONS

- Free-Standing Dinette w/ 4 Chairs
- 10.7 cu. ft. Residential Refrigerator w/ Inverter (All Models)
- 15,000 BTU Ducted A/C w/ Quick Cool
- Outside Shower
- White Gel Coat Fiberglass Front Cap
- Extreme Weather Package (Calc. @ R38 Floor, Front Cap and Roof)
- Exterior Kitchen/Bar

CONTACT YOUR HEMISPHERE DEALER FOR A COMPLETE LIST OF OPTIONS.

EXTERIOR KITCHEN

THE EXTERIOR KITCHEN OPTION IS AVAILABLE ON SELECT MODELS OF BOTH FIFTH WHEELS AND TRAVEL TRAILERS AND FEATURES:

- PRESSED METAL COUNTERTOP AT LOW, WORKABLE HEIGHT
- FAUCET WITH HOT AND COLD WATER
- SINK WITH PLUMBING TO ADDITIONAL ENCLOSED GREY TANK
- CONVENIENT 110V OUTLET
- BUMPER MOUNTED, SWING ARM GAS GRILL WITH LP HOOK UP



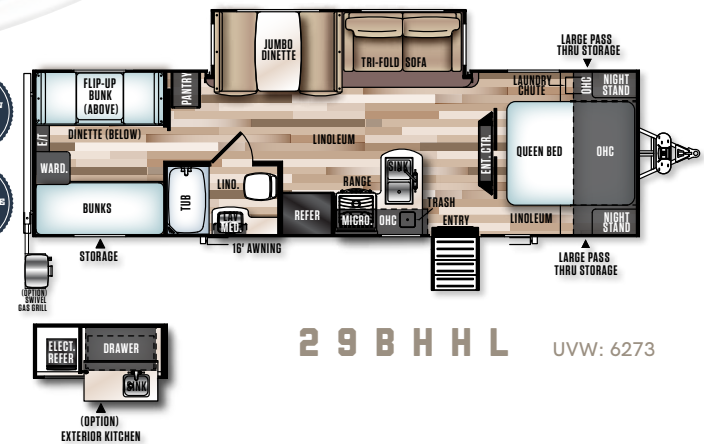
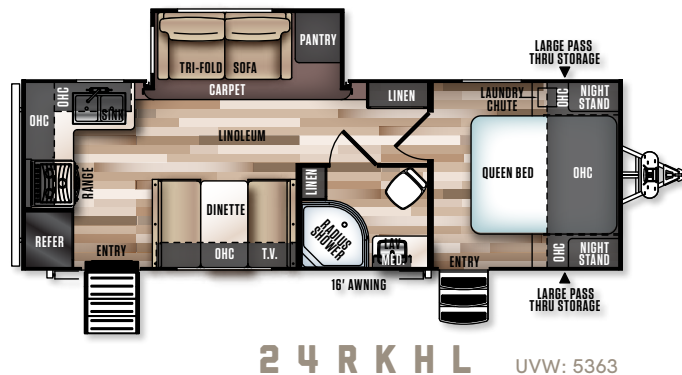
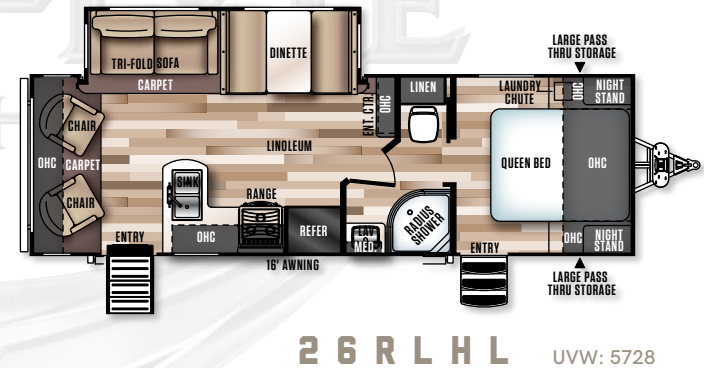
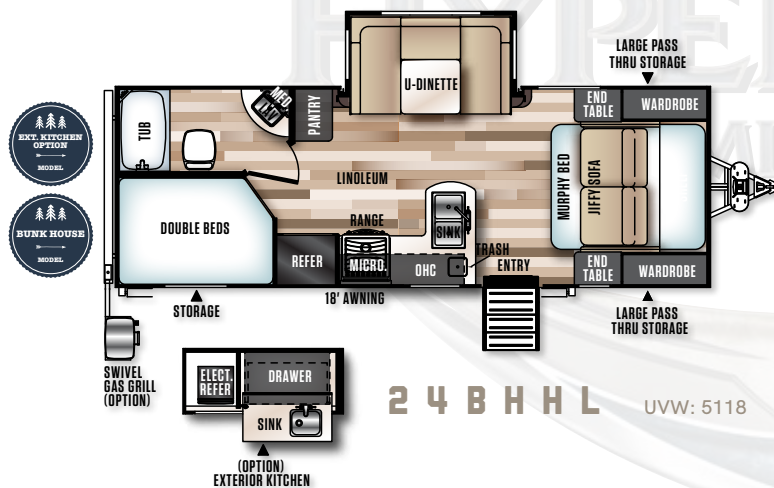
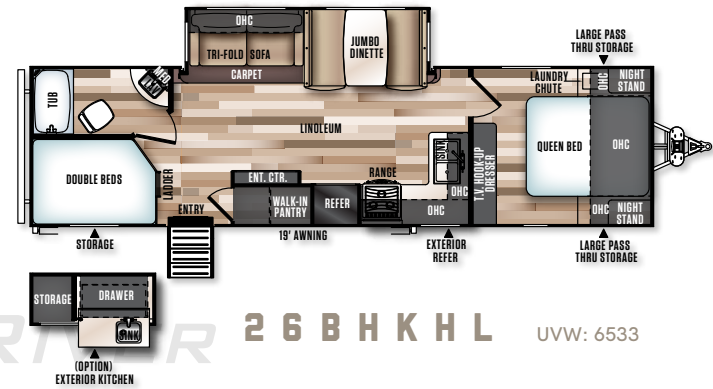
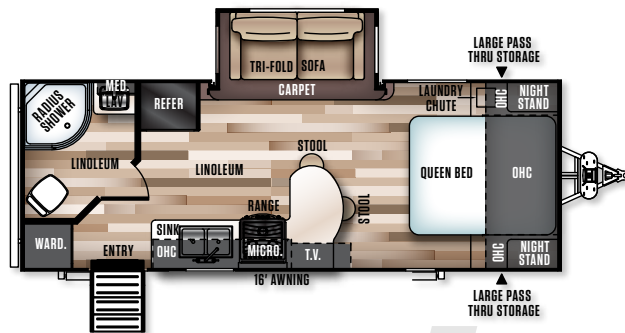
DECOR OPTIONS



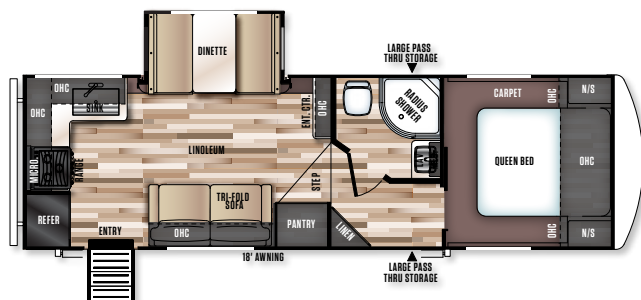
PREPARED FOR
THE SEASONS

- HEATED AND ENCLOSED UNDERBELLY WITH UNDER-FLOOR DUCTED HEATING
- HIGH DENSITY, BLOCK FOAM INSULATION (SIDEWALL AND FLOOR)
- DOUBLE LAYERED FIBERGLASS INSULATION (ROOF, FRONT AND REAR WALL)
- HIGH EFFICIENCY AIR CONDITIONING SYSTEM WITH THICK, INSULATED DUCTING

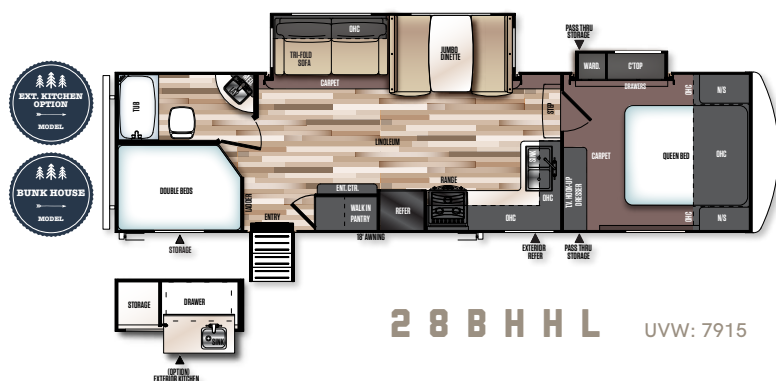
HYPER-LYTE TRAVEL TRAILER FLOORPLANS



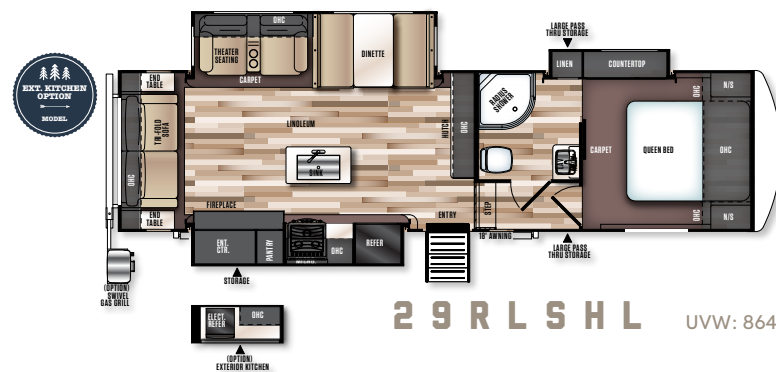
HYPER-LYTE FIFTH WHEEL FLOORPLANS



25RKSHL UVW: 6939



28BHHL UVW: 7915



29RLSHL UVW: 8649



SPECIFICATIONS	TRAVEL TRAILERS						FIFTH WHEELS		
MODEL	23RBHL	24BHHL	24RKHL	26BHKHL	26RLHL	29BHHL	25RKSHL	28BHHL	29RLSHL
HITCH HEIGHT (lbs)	520	510	585	714	625	645	1307	1552	1632
AXLE WEIGHT	4210	4570	4740	5781	5065	5590	5573	6304	6958
UVW	4768	5118	5363	6533	5728	6273	6939	7915	8649
CCC (cargo cap)	2752	2392	2222	2981	1897	3172	3061	2597	1943
EXT LENGTH	25' 11"	27' 0"	28' 7"	34' 10"	30' 1"	32' 7"	29' 6"	34' 0"	33' 10"
EXT HEIGHT	10' 10"	10' 10"	10' 10"	10' 8"	10' 10"	10' 11"	11' 10"	12' 6"	12' 1"
FRESH WATER CAP (gal)*	49	49	49	48	49	48	48	48	48
BLACK WATER CAP (gal)	32	32	32	27	32	27	30	27	30
GREY WATER CAP (gal)	32	32	64	64	32	54	57	54	62
TIRE SIZE (in)	15"	15"	15"	15"	15"	15"	15"	15"	15"
AWNING SIZE (ft)	16'	18'	16'	19'	16'	16'	18'	18'	18'

See back cover for more information on weights. *Includes water heater.

GVWR (Gross Vehicle Weight Rating) - is the maximum permissible weight of the unit when fully loaded. It includes all weights, inclusive of all fluids, cargo, optional equipment and accessories. For safety and product performance do NOT exceed the GVWR.

GAWR (Gross Axle Weight Rating) - is the maximum permissible weight, including cargo, fluids, optional equipment and accessories that can be safely supported by a combination of all axles.

UVW (Unloaded Vehicle Weight)* - is the typical weight of the unit as manufactured at the factory. It includes all weight at the unit's axle(s) and tongue or pin and LP Gas. The UVW does not include cargo, fresh potable water, additional optional equipment or dealer installed accessories.

*Estimated Average based on standard build optional equipment.

CCC (Cargo Carrying Capacity)** - is the amount of weight available for fresh potable water, cargo, additional optional equipment and accessories. CCC is equal to GVWR minus UVW. Available CCC should accommodate fresh potable water (8.3 lbs per gallon). Before filling the fresh water tank, empty the black and gray tanks to provide for more cargo capacity.

** Estimated average based on standard build optional equipment

Each Forest River RV is weighed at the manufacturing facility prior to shipping. A label identifying the unloaded vehicle weight of the actual unit and the cargo carrying capacity is applied to every Forest River RV prior to leaving our facilities.

The load capacity of your unit is designated by weight, not by volume, so you cannot necessarily use all available space when loading your unit.

All information contained in this brochure is believed to be accurate at the time of publication. However, during the model year, it may be necessary to make revisions and Forest River, Inc., reserves the right to make all such changes without notice, including prices, colors, materials, equipment and specifications as well as the addition of new models and the discontinuance of models shown in this brochure. Therefore, please consult with your Forest River dealer and confirm the existence of any materials, design or specifications that are material to your purchase decision.



PRE-DELIVERY INSPECTION FACILITY

20,000 square feet of quality assurance. The bare essentials for a premium product. This state-of-the-art facility gives immediate daily feedback to production for quality assurance in every unit built.



FREE MEMBERSHIP
to Forest River Owners' Group

www.forestriverfrog.com



www.ForestRiverBuyLocal.com

FOREST RIVER
HYPER-LYTE
HEMISPHERE



Learn More

Scan this barcode using a QR Reader on your smart phone to learn more about Forest River.



A Berkshire Hathaway company.

Forest River, Inc.
55470 C.R. 1, Elkhart, IN 46515
(574) 389-4600
www.forestriverinc.com/hemisphere
www.forestriveraccessories.com

YOUR LOCAL HEMISPHERE DEALER

© 2018 - HEMISPHERE a Division of Forest River Inc.
A Berkshire Hathaway company