



LIGHTWEIGHT TRAVEL TRAILERS & FIFTH WHEELS



Highland
RIDGE RV

Own the Outdoors

FLOORPLANS

TRAVEL TRAILERS



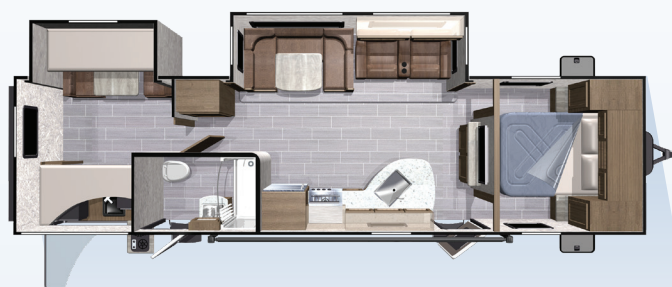
LT271RLS



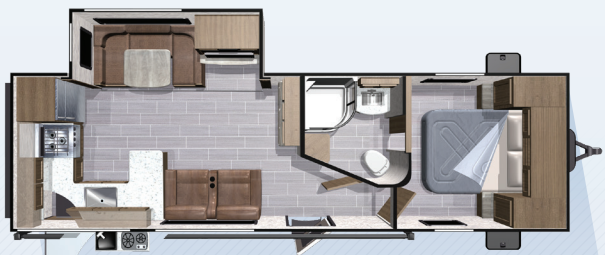
LT291RLS



LT275RLS



LT311BHS



LT280RKS



LT312BHS

FIFTH WHEELS



LF291RLS



LF295BHS

FEATURES

STANDARDS

- » 1/2 Ton Towable (FW)
- » 100# Full Extension Drawer Guides
- » 8 Cu. Ft. Refrigerator
- » LED Lighting in Ceilings
- » Quick Recovery Gas/Electrical Water Heater
- » Residential Return Air A/C - FW Race Track Ducting
- » Prepped for Observation Camera
- » Key-Alike System
- » Aluminum Tread Entry Steps
- » Power Awning(s) with LED Lighting
- » Stainless Steel Appliances
- » Stainless Steel Under Mount Sinks (Kitchen & Lav)
- » Outside Enclosed Docking Station
- » Battery Disconnect
- » Solar Prep
- » Queen Mattress (60" x 80")
- » Solid Surface Counter Tops (Kitchen) & Pressed Membrane Tops
- » Linoleum Throughout
- » Patent Flush Floor Slides with Vinyl Flooring (No Carpet)
- » Framelss Windows
- » Hardwood Cabinet Doors
- » 50 Amp Service
- » PVC Roofing Membrane (12 Year Warranty/10 Year Non-Prorated)
- » Porcelain Toilet
- » Linoleum Throughout Main Living Areas & Slides (FW)
- » Walk Around Queen Bed with Best in Class Headroom (FW)
- » Heat Registers Strategically Placed (No Registers in Floor) (FW)

OPTIONS

- » A/C - 2nd A/C, 13.5k BTU Ducted
- » A/C - Main 15k A/C ipo Std. 13.5k A/C
- » BBQ Grill with Bumper Bracket
- » Bike Rack - LCI Jack-It Front Bike Rack (TT)
- » Power Front and Rear Stabilizer Jacks
- » Recliners ipo Std. Theater Seats (280)
- » Tri-Fold Sofa ipo Std Power Theater Seats (295)
- » U-Lounge ipo Std. Theater Seats/Booth (295)
- » Table/Chairs ipo Std. Booth
- » Tri-Fold Sofa ipo Std Power Theater Seats (N/A 291)
- » U-Lounge ipo Std. Theater Seats/Booth (275, 312)

SPECIFICATIONS

	LT271RLS	LT275RLS	LT280RKS	LT291RLS	LT311BHS	LT312BHS	LF291RLS	LF295BHS
Square Feet	262	310	260	300	315	342	317	320
UVW	5710	7065	5900	6483	6835	7745	7840	8270
Hitch Weight	707	880	675	822	931	935	1305	1320
GVWR	7400	8995	7675	8600	8995	9735	9995	9995
Cargo (Gross)	1690	1635	1775	2117	2160	1990	2155	1725
Length (Pin to Rear)	31' 6"	33' 11"	31' 9"	33' 5"	35' 5"	36' 11"	31' 11"	33' 11"
Ext. Height	131"	131"	131"	131"	131"	131"	151"	151"
Ext. Width	97"	97"	97"	97"	97"	97"	97"	97"
Ext. Width (Slides Out)	135"	156"	135"	156"	135"	169"	156"	156"
Interior Height (Upper Deck)	-	-	-	-	-	-	80"	80"
Interior Height (Overall)	82"	82"	82"	82"	82"	82"	92"	92"
Fresh Water (Gal.)	51	51	51	51	51	58	51	51
Gray Water (Gal.)	29	58	58	58	29	70	58	58
Waste Water (Gal.)	29	29	29	29	29	29	29	29
LP Capacity (lbs.)	60	60	60	60	60	TBD	60	60
Tire Size	15"	15"	15"	15"	15"	15"	15"	15"
Awning Size	20'	20'	20'	10', 11'	19'	19'	9', 11'	15'

CONSTRUCTION



1 | ROOF

- » Double batten insulation layered with radiant foil
- » Screw-mounted plywood decking topped with premium quality PVC
- » No treatment required! Will not chalk or spot
- » Heat reflecting properties keep coach cooler in the summer

2 | SLIDE OUTS

- » Best in class slide height and depth
- » Flush floor and above floor slides
- » Accu-Slide cable system with four points of compression
- » Laminate components plus 3M flashing tape along corners to prevent leaks

3 | SIDEWALLS

- » Lightweight, double-welded aluminum walls
- » Slide roof frames laminated with rigid foam insulation

4 | MAIN BODY

- » Class-leading I-beam chassis and draw bars
- » Equa-Flex suspension system
- » Axles with self-adjusting brakes
- » Aluminum wheels with nitrogen-filled tires
- » Industry-leading unique heating system

5 | DOORS & LOCKS

- » Full-width entrance doors with built-in screen doors and integrated window shades
- » Entrance and baggage doors on secure and convenient key-alike system

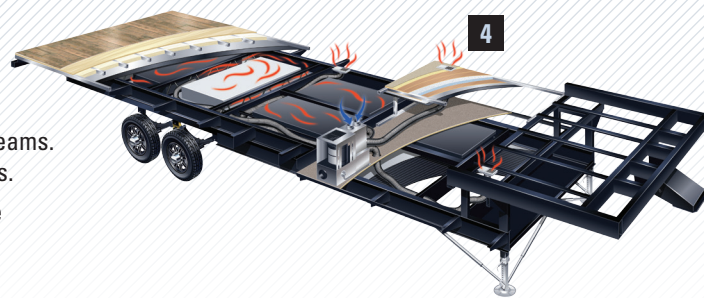
6 | FLOORS

- » Double-welded framed floors
- » Insulated with rigid foam wrapped in radiant foil, anti-puncture Darco material, and strengthened with an overlapping double layer of laminate

INDUSTRY-LEADING HEATING SYSTEM

Oversize 4-inch heat ducts run from the furnace down to the fully enclosed underbelly and wrap around the tanks suspended between the chassis I-beams. Holding tanks are warmed by the forced air heat which prevents freeze-ups.

A return at the end of the tank connecting back into the coach provides the necessary air flow, eliminating the need for a pressurized system.



Your Light Dealer:



Highland
RIDGE RV

Own the Outdoors

For more information visit us at:
www.HighlandRidgeRV.com

Due to continual research and advances, manufacturer reserves the right to change specifications, design, price, and equipment without notice, and assumes no responsibility for any error in the literature. Some items shown are not included as standard or optional equipment.