



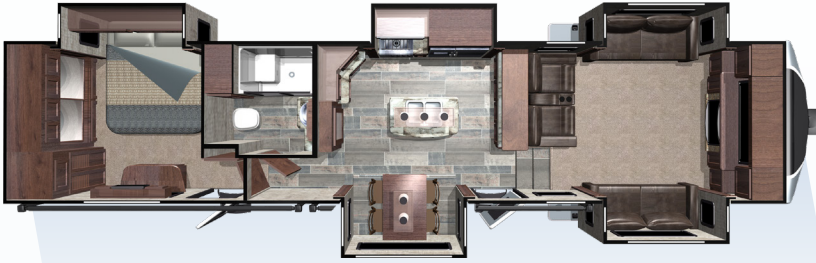
LUXURY FIFTH WHEELS



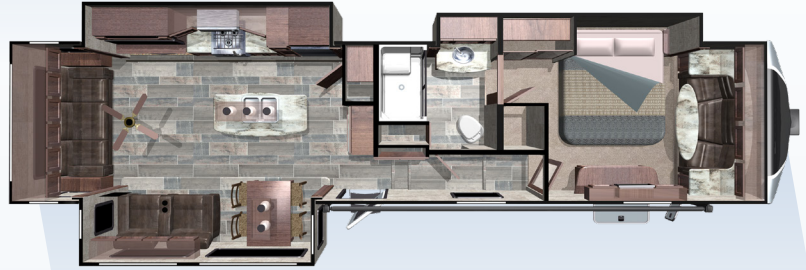
Highland
RIDGE RV

Own the Outdoors

FLOORPLANS



3X377FLR



3X384RLS



3X387RBS



3X388RKS



3X397FBS



3X427BHS

FEATURES

STANDARDS

- » 102" Wide Body
- » 3X Thermal Barrier Sidewall
- » 21" Oven with Flush Glass Stove Top
- » 6 Point Auto Leveling with JT Strong Arm Stabilizers
- » No Carpet in Kitchen & Living Areas
- » Patent Flush Floor Slides with Vinyl Flooring (No Carpet)
- » Arched Vaulted Ceilings
- » Dual Pane Windows
- » ACCU-SLIDE Slide System (42" Deep with 4- Corner Compression)
- » 15k (Main) & 13.5k (2nd) Residential Return Air A/C
- » PVC Roofing Membrane (12 Year Warranty/ 10 Year Non-Prorated)
- » Day & Night Roller Shades
- » Key-Alike System
- » 84" Slide-Out Ceiling Height
- » 32" x 76" Entrance & Screen Door Combo
- » Aluminum Tread Entry Steps
- » 23 Cu Ft. 110V Refrigerator with Ice Maker, Exterior Access Door (for service), and Freeze Protection Water Lines
- » French Door to Bedroom
- » Washer/Dryer Prep
- » Armless Automatic Awning with LED Light, FLX Guard, Wind Sensor & Dual Pitch
- » Metal Slam Latch Baggage Doors
- » Nitrogen Filled G-Rated Tires with Aluminum Rims
- » Motion Sensor Light in Bedroom & Hallway
- » Solar Prep
- » Correct Track Suspension Alignment System
- » Heat & Massage Theatre Seats
- » Wall Controlled Power Vent (Kitchen)

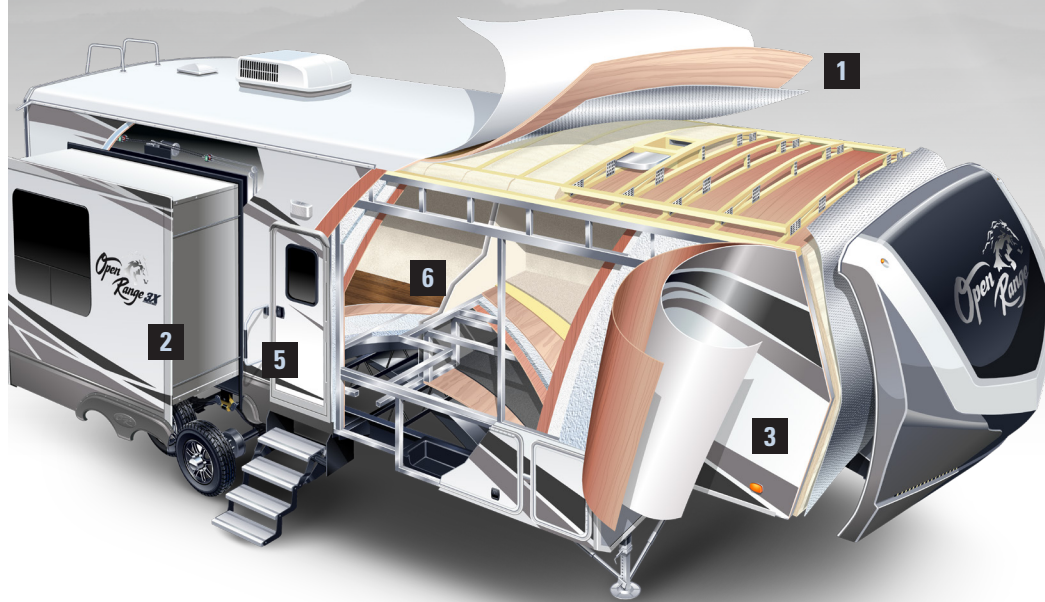
OPTIONS

- » BBQ Grill
- » Bike Receiver
- » Fan: Wall Control Power Vent, Bathroom (Std in 377, 387), Living Room (377, 387)
- » Fireplace - Wall Mount (427)
- » Folding Dinette Chairs (2 Extra)
- » Generator LP-Onan 5.5KW **MUST Option Gen Prep**
- » Generator Prep - LP
- » Heat Pump (on Main 15k A/C)
- » Observation Camera
- » Queen Bed ipo Std. King Bed
- » Recliners ipo Std. Theater Seats (388, 397)
- » Refrigerator - 12cu ipo 23cu
- » Slide-Out Awning Covers: 3 (384, 388, 397), 4 (372, 377, 387), 5 (427)
- » Sofa ipo Std. Theater Seats (427)
- » TV: Bedroom, Outside Kitchen (372, 427), Bunk Room TV (372)
- » TrailAir Air Ride Pin Box
- » U-Lounge (with HAB Mattress) (427)
- » Vacuum Cleaner - Dyson

SPECIFICATIONS

	3X377FLR	3X384RLS	3X387RBS	3X388RKS	3X397FBS	3X427BHS
Square Feet	429	430	429	420	428	430
UVW	12860	12910	13320	12280	12800	13340
Hitch Weight	2373	2545	2575	2465	2470	2338
GVWR	16995	16450	16470	16450	16470	16300
Cargo (Gross)	4135	3540	3150	4170	3670	2960
Length (Pin to Rear)	41' 8"	39' 11"	42' 4"	39' 8"	42' 2"	41' 11"
Ext. Height	157"	157"	157"	157"	157"	157"
Ext. Width	102"	102"	102"	102"	102"	102"
Ext. Width (Slides Out)	165"	169"	169"	180"	169"	165"
Interior Height (Overall)	100"	100"	100"	100"	100"	100"
Interior Height (Upper Deck)	78"	78"	78"	78"	78"	78"
Fresh Water (Gal.)	85	85	85	85	85	85
Gray Water (Gal.)	123	82	82	82	82	82
Waste Water (Gal.)	41	41	82	41	82	82
LP Capacity (lbs.)	60	60	60	60	60	60
Tire Size	16"	16"	16"	16"	16"	16"
Awning Size	(2) 14'	18'	18', 12'	16'	18'	18'

CONSTRUCTION



1 | ROOF

- » Double batten insulation layered with radiant foil
- » Screw-mounted plywood decking topped with premium quality PVC
- » No treatment required! Will not chalk or spot
- » Heat reflecting properties keep coach cooler in the summer

2 | SLIDE OUTS

- » Best in class slide height and depth
- » Flush floor and above floor slides
- » Accu-Slide cable system with four points of compression
- » Laminate components plus 3M flashing tape along corners to prevent leaks

3 | SIDEWALLS

- » Light-weight, double-welded aluminum walls
- » Slide roof frames laminated with rigid foam insulation

4 | MAIN BODY

- » Class-leading I-beam chassis and draw bars
- » Equa-Flex suspension system
- » Axles with self-adjusting brakes
- » Aluminum wheels with nitrogen-filled tires
- » Industry-leading unique heating system

5 | DOORS & LOCKS

- » Full-width entrance doors with built-in screen doors and integrated window shades
- » Entrance and baggage doors on secure and convenient key-alike system

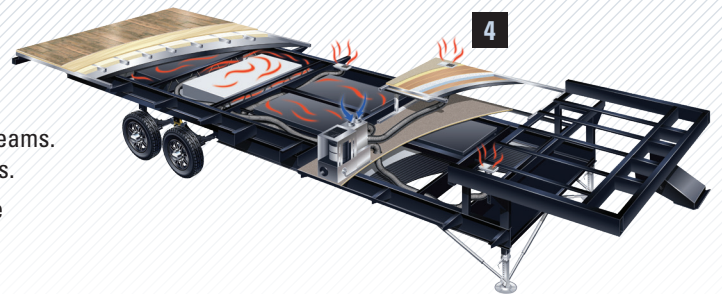
6 | FLOORS

- » Double-welded framed floors
- » Insulated with rigid foam wrapped in radiant foil, anti-puncture Darco material, and strengthened with an overlapping double layer of laminate

INDUSTRY-LEADING HEATING SYSTEM

Oversize 4-inch heat ducts run from the furnace down to the fully enclosed underbelly and wrap around the tanks suspended between the chassis I-beams. Holding tanks are warmed by the forced air heat which prevents freeze-ups.

A return at the end of the tank connecting back into the coach provides the necessary air flow, eliminating the need for a pressurized system.



Your Open Range 3X Dealer:

 **Highland**
RIDGE RV
Own the Outdoors

For more information visit us at:
www.HighlandRidgeRV.com