



HORIZON



RV PRO  
BEST OF SHOW  
2018



RVBUSINESS  
RV OF THE YEAR  
2018

Set your course for the new Horizon

**WINNEBAGO**



*On the Cover: Harvest Frost Contemporary Full-Body Paint  
Interior: Mica with Smoke Cabinetry*



## The new look of diesel luxury and performance

Confident and bold, the new Winnebago® Horizon® brings a fresh look to the diesel pusher category, with the performance to back it up. Each of the Horizon floorplans feature a refreshingly clean design, highlighted by LED tube lighting and luxurious Villa furnishings. Both include a spacious master bedroom with an available walkaround recline/incline king bed, abundant interior storage, full galley with residential-style refrigerator, and the versatile Glide & Dine® dining table

and chairs that let you configure your dining area to suit your needs. Every Horizon is built on our turbo-diesel-powered Maxum Chassis® so you can count on the performance, ride, handling, and storage to match the Horizon's elegant good looks. Drive, arrive, and thrive in style: the new Horizon is calling.

This brochure features the **Horizon 40A floorplan**



# Horizon | Lounge

Relaxing in style has never been so comfortable. Settle into the sleek lounge chair or snuggle up by the fireplace on the Rest Easy® Sofa (40A) or the Extendable Sectional Sofa (42Q). The Horizon's premium Villa furnishings offer superb comfort and durability, and swivel cab seats offer additional seating choices when you're hosting movie night, thanks to the home theater system with a soundbar and subwoofer. Porcelain tile flooring and dual-pane, frameless, tinted windows with MCD solar/blackout roller shades add to the Horizon's clean and contemporary ambiance, while the decorative ceiling panels provide quiet, even A/C distribution and soft LED ambient lighting.



# Horizon | Galley

Whether you're making a light snack or crafting a gourmet meal, the Horizon's fully equipped galley is your ace in the hole. An apron-front stainless steel sink is set in the beautiful Corian® countertop, and a stationary galley peninsula (40A) provides additional counter space. The touch-control microwave/convection oven and two-burner induction range top provide precision-controlled heat, while cooling duties are handled by the residential stainless steel French door refrigerator. The optional dishwasher further adds to the galley's upscale look and functionality.





When the day is done, or when you just need some downtime, the spacious rear bedroom beckons. Dial in perfect comfort on the available powered Ideal Rest® Natural Reserve king bed, or take in the day's events on the bedroom HDTV. A chest of drawers and a wardrobe offer abundant clothing storage, and the available washer/dryer further extends your wardrobe range. The bathroom showcases a Corian countertop with a decorative backsplash, a large shower with a clear glass shower door, and a flexible hand-held showerhead to help you relax or recharge.







The Horizon's powered driver and passenger seats put you in complete control as you recline and swivel to meet your lounging needs. Powered mirrors with defrost, turn signal indicator, and a sideview camera are standard, as are the tilt/telescopic steering column and keyless entry with remotes. Charge your devices with the 12-volt powerpoints while utilizing the 10.4" touch screen Infotainment Center with a Rand McNally RV GPS, Bluetooth® capability, and much more.





# Horizon | Exterior

The Horizon's stunning appearance is accented by its premier clearcoat automotive finish in your choice of a traditional or contemporary design. To ensure your complete comfort outside as well as inside your coach, standard equipment includes an exterior entertainment center with an HDTV, soundbar, and wireless subwoofer. In addition, relax under the powered patio awning with a motion sensor and LED lighting.



Powered Patio Awning



Exterior Entrance Door and Awning



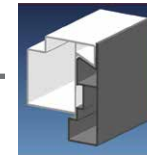
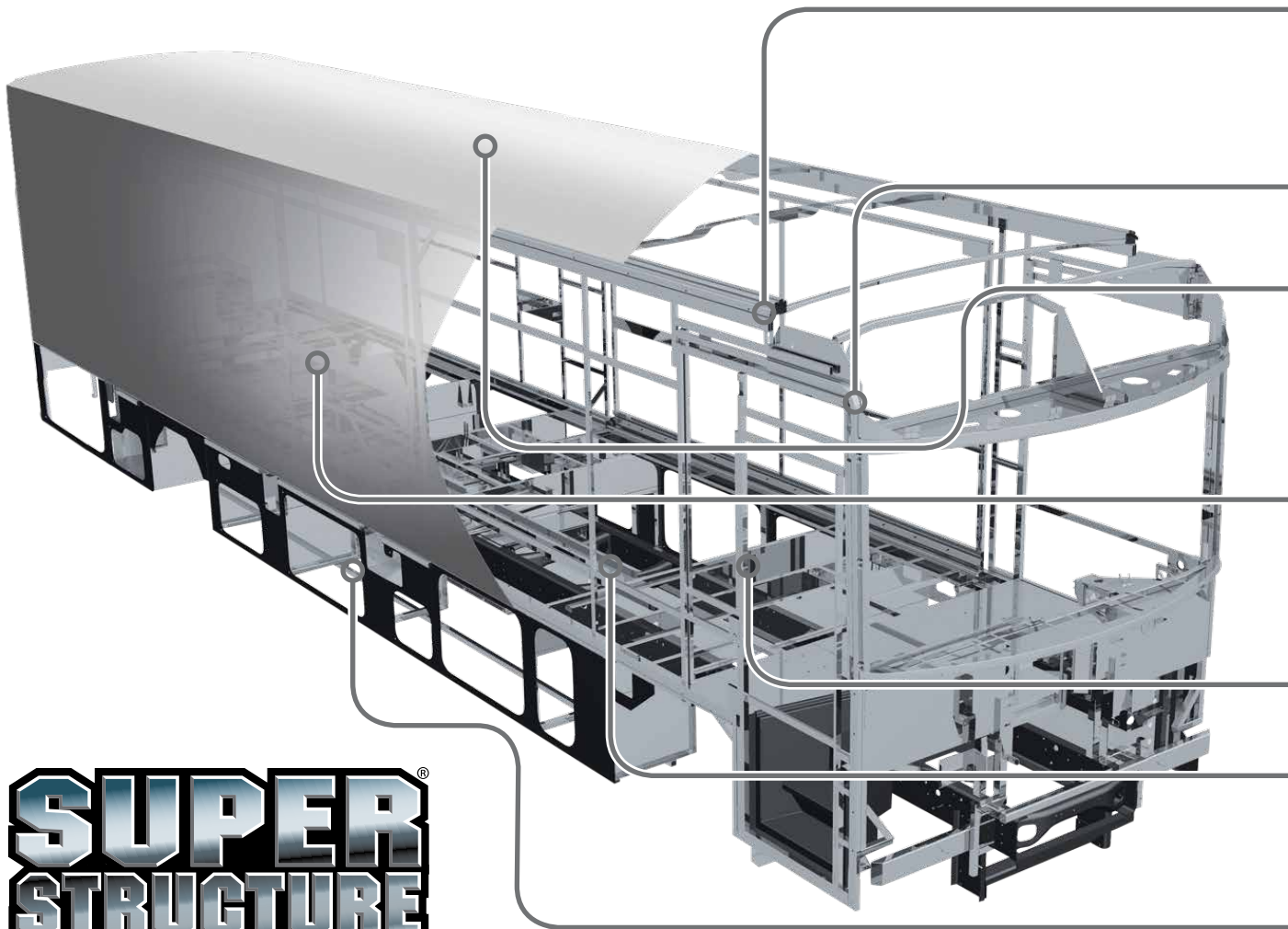
Stylized Aluminum Wheel



Exterior Storage



Exterior Slideout Storage Tray



**Interlocking Joints** Specially engineered interlocking joints connect the floor, sidewalls, and roof where competitors often rely on simple screws to bear the weight.



**Laser-Cut Tubing** Precision laser cutters create precise joints in structural steel that are stronger and require less welding.

**Fiberglass Roof** The one-piece fiberglass roof is backed by a 10-year limited parts-and-labor roof skin warranty.

**Thermo-Panel® Sidewalls** By layering fiberglass and high-density block foam insulation with welded aluminum support structures, we create some of the industry's strongest, most durable, and lightweight sidewalls.

**Solid Framework** Structural extruded aluminum creates an extremely strong and solid frame.

**Embedded Steel** Metal substructures embedded into the sidewall provide solid attachment points to keep cabinets and appliances mounted securely in place.

**E-coating** An electrodeposition coating helps protect critical steel components.

**SUPER  
STRUCTURE**

BUILT TO LAST

From our smallest Class C coach to our largest diesel-pusher, coaches are built to Winnebago's® legendary SuperStructure® construction design. It's a process developed and refined over more than 50 years of building some of the strongest, most durable coaches in the industry.



## TESTING

Before rolling out of our factories,

every coach undergoes an extensive 113-point inspection. Each coach also passes a high-pressure water test that simulates rain at a rate of 50-inches per hour to check for leaks. During the design process, our computer simulations, physical testing center, and rigorous test track ensure each model is built to last.



Visit [BetterBuiltRVs.com](http://BetterBuiltRVs.com) to gain real insight into what goes into a Winnebago motorhome.

## DETAILS

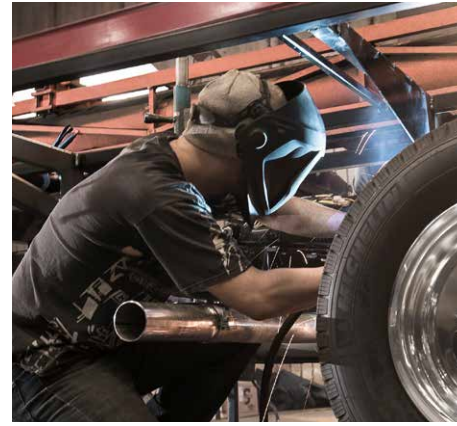
At Winnebago,

we treat the features you can't see with the same care as the ones you can. Look in the access panels of some of our competitors' coaches and you'll see loose insulation and wires haphazardly strewn about. Winnebago maintains a clean fit and finish throughout so your coach will last for the long haul.



## BUILT IN-HOUSE

We process and finish key aluminum parts. We rotocast our own plastic components. In fact, we manufacture most of our own parts so they are designed to fit the space, rather than fitting the space to an awkward off-the-shelf component size.



**SUPER  
STRUCTURE**  
BUILT TO LAST

## TAKE A TOUR

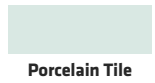
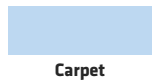
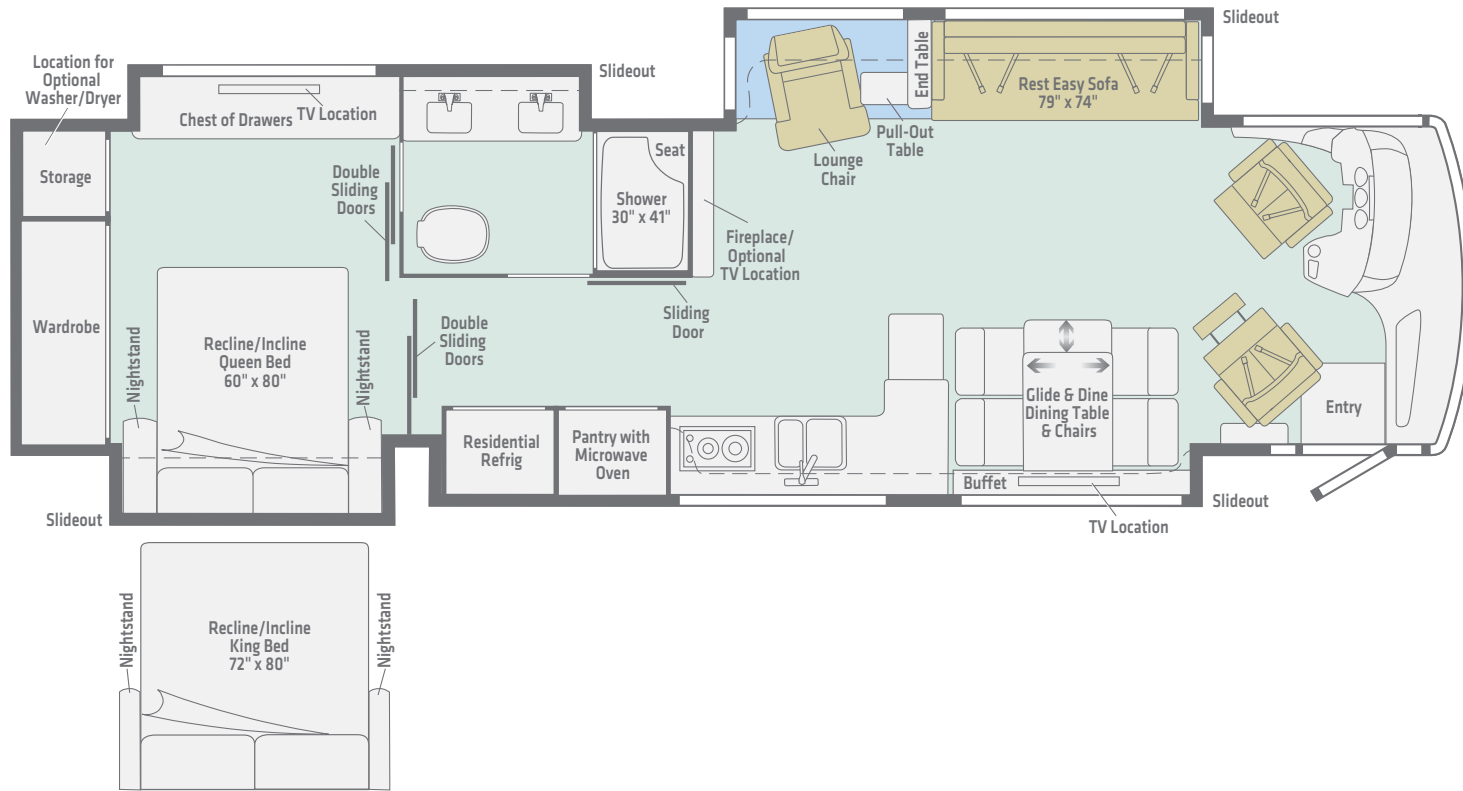
We're proud of our processes, state-of-the-art facilities, and the people who make Winnebago number one. We invite you to visit our complex in Forest City, Iowa, for a firsthand look at the dedication and technology behind every motorhome we build.



Call (641) 585-6936 or (800) 643-4892 or visit us online at [WinnebagoInd.com/company/visit](http://WinnebagoInd.com/company/visit) for more information.

# 40A

The quad-slide 40A seamlessly blends meal prep, dining, and entertaining areas for the ultimate experience in versatile living space.



Length 41'1"  
 Ext. Storage (cu. ft.) 183  
 Seating 4

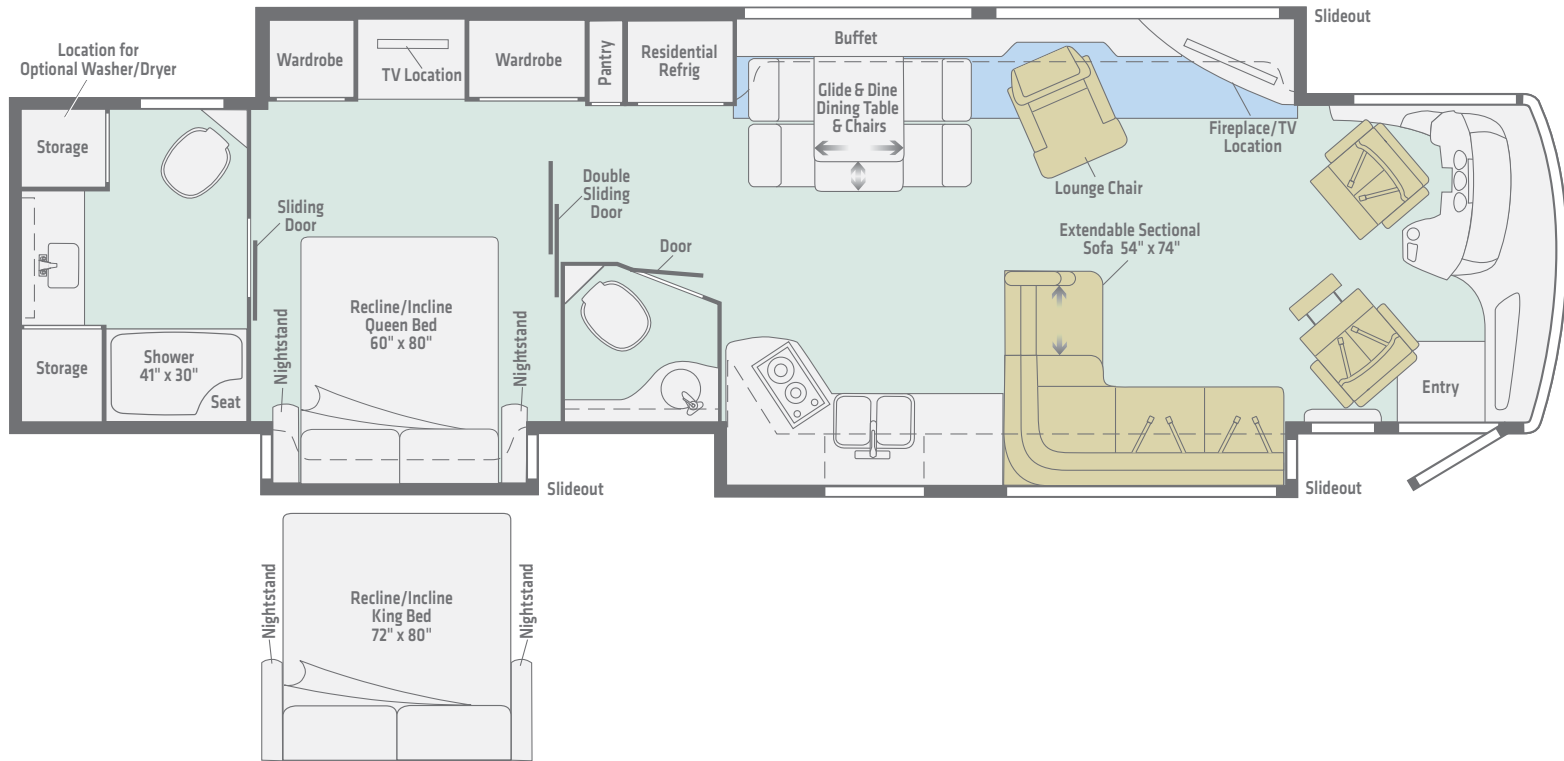
*Dimensions shown are for sleeping and shower space only and may vary due to styling differences. Dashed lines denote overhead storage areas. Floorplans and specifications are also available online at [WinnebagoInd.com](http://WinnebagoInd.com).*

[Click here to explore this floorplan's web page.](#)



# 42Q

A mid-coach guest bath, dedicated lounge area, and private master suite make the 42Q ideal for entertaining – or getting away from it all.



Standard Ultraleather



Carpet



Porcelain Tile

**Length 43'3"**  
**Ext. Storage (cu. ft.) 229**  
**Seating 4**

*Dimensions shown are for sleeping and shower space only and may vary due to styling differences. Dashed lines denote overhead storage areas. Floorplans and specifications are also available online at WinnebagoInd.com.*



Click here to explore this floorplan's web page.

*Effective 3/21/18 traditional body paint discontinued.  
Choose from eight new contemporary full-body paint options.*



**Anvil**  
CONTEMPORARY  
FULL-BODY PAINT



**Indium**  
CONTEMPORARY  
FULL-BODY PAINT



**Lava Gray**  
CONTEMPORARY  
FULL-BODY PAINT



**Harvest Frost**  
CONTEMPORARY  
FULL-BODY PAINT



Effective 3/21/18 traditional body paint discontinued.  
Choose from eight new contemporary full-body paint options.



**Magma**  
CONTEMPORARY  
FULL-BODY PAINT



**Powder Gray**  
CONTEMPORARY  
FULL-BODY PAINT



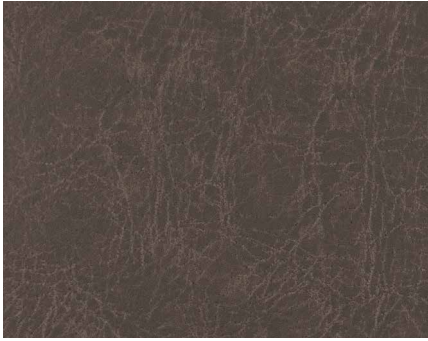
**Shadow**  
CONTEMPORARY  
FULL-BODY PAINT



**Wedgewood**  
CONTEMPORARY  
FULL-BODY PAINT

Choose from three collections and three wood package options.

### Mica



Ultraleather



Ultraleather Accent



Feature Fabric



Wall Board

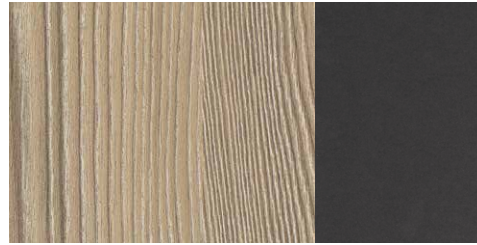


Bedsread

### Wood Packages



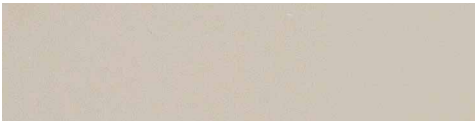
Smoke High Gloss w/Grigio High Gloss



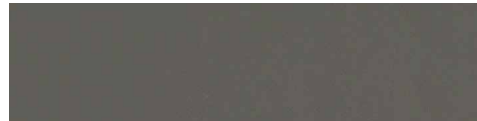
Briarwood w/Gun Metal High Gloss



Cappuccino High Gloss w/Sandalwood



Corian Countertop



Corian Countertop



Corian Countertop



Porcelain Tile Flooring



Porcelain Tile Flooring



Porcelain Tile Flooring

*Winnebago® reserves the right to change décor materials and specifications without notice or obligation.*



Choose from three collections and three wood package options.

# Gypsum



Ultraleather



Ultraleather Accent



Feature Fabric



Wall Board

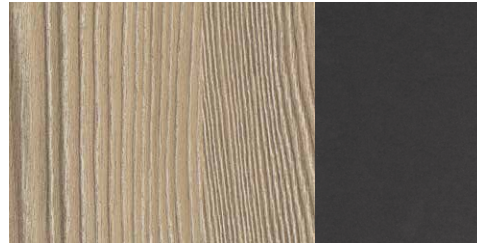


Bedsread

# Wood Packages



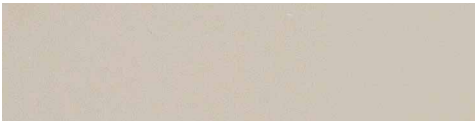
Smoke High Gloss w/Grigio High Gloss



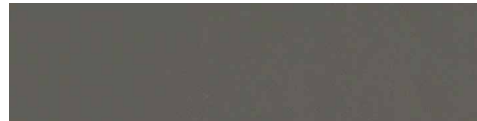
Briarwood w/Gun Metal High Gloss



Cappuccino High Gloss w/Sandalwood



Corian Countertop



Corian Countertop



Corian Countertop



Porcelain Tile Flooring



Porcelain Tile Flooring



Porcelain Tile Flooring

*Winnebago® reserves the right to change décor materials and specifications without notice or obligation.*

Choose from three collections and three wood package options.

# Hematite



Ultraleather



Ultraleather Accent



Feature Fabric



Wall Board

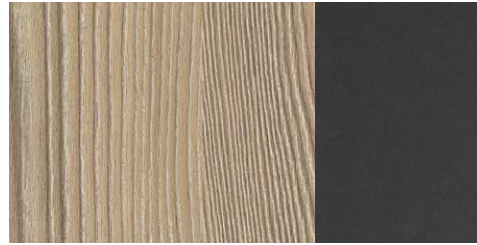


Bedsread

# Wood Packages



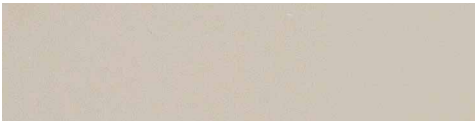
Smoke High Gloss w/Grigio High Gloss



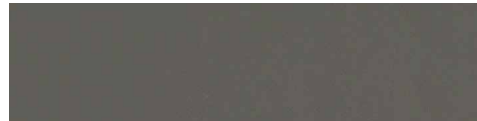
Briarwood w/Gun Metal High Gloss



Cappuccino High Gloss w/Sandalwood



Corian Countertop



Corian Countertop



Corian Countertop



Porcelain Tile Flooring



Porcelain Tile Flooring



Porcelain Tile Flooring

*Winnebago® reserves the right to change décor materials and specifications without notice or obligation.*



## Weights & Measures

	40A	42Q
Length	41'1"	43'3"
Exterior Height <sup>1</sup>	12'9"	12'9"
Exterior Width <sup>2</sup>	8'5.5"	8'5.5"
Exterior Storage <sup>3</sup> (cu. ft.)	183	229
Awning Length	20'	14'6"
Interior Height	7'	7'
Interior Width	8'0.5"	8'0.5"
Freshwater Tank Capacity <sup>4</sup> (gal.)	85	85
Water Heater Capacity (gal.)	Unlimited	Unlimited
Holding Tank Capacity - Black/Gray <sup>4</sup> (gal.)	57/89	51/71
LP Capacity <sup>5</sup> (gal.)	5.6	5.6
Fuel Capacity (gal.)	100	150
GCWR <sup>6</sup> (lbs.)	53,700	60,660
GVWR (lbs.)	38,700	45,660
GAWR - Front (lbs.)	14,700	15,660
GAWR - Rear (lbs.)	24,000	30,000
Wheelbase	276"	279"+tag
Seating Capacity	4	4

## Maxum Chassis®

400-hp Cummins ISL 8.9L turbo-charged diesel engine (40A)

450-hp Cummins ISL 8.9L turbo-charged diesel engine (42Q)

Allison® 6-speed automatic 3000 MH transmission

160-amp. alternator (40A)

240-amp. alternator (42Q)

Air brakes w/ABS

Engine exhaust brake

QuickConnect® air connection w/manual shut off

Automatic hydraulic leveling jacks

7-pin trailer wiring

Trailer Hitch<sup>6</sup> 15,000-lb. drawbar/1,500-lb. maximum vertical tongue weight

Stylized aluminum wheels

Front air suspension

FCCC V-Ride® rear drive axle/suspension

Chassis ignition slide room lock system

## OPTIONAL EQUIPMENT

Tire pressure monitoring system

## Cab Conveniences

**Infotainment Center with Rand McNally RV GPS** 10.4" touch screen color monitor w/split screen function, 2nd monitor, Rand McNally RV GPS safe & easy routing, amenities & tools, trips & content, turn-by-turn voice guidance, AM/FM radio, steering wheel and handheld remotes, SiriusXM™ (includes 90-day trial subscription), compass, outside temperature, iPod®/iPhone® audio integration, Bluetooth®, color rearview camera, sideview cameras, and house mode feature (mirrors video and audio of radio screen to any TV in or on the coach)

**Radio** w/power switch, 4-speaker system

**Cab seats** w/multi-position armrests, adjustable lumbar support, multi-adjustable recline, map pocket, and footrest (passenger seat only)

**3-point seat belts**

**6-way power assist seat pedestal** w/remote swivel release

**Cruise control**

**12-volt powerpoints and USB chargers**

**Powered stepwell cover**

**Powered MCD solar/blackout roller shades** (front windshield)

**Defroster fans**

**MCD solar/blackout roller shades** (driver and passenger windows)

**Chassis/house battery radio power switch**

**Adjustable gas and brake peddle**

**Power mirrors** w/defrost, turn signal indicator, and sideview camera

**TRW® tilt/telescopic steering column** w/foot actuated pedal

**Keyless entry** w/remotes

**Instrument Panel**

**Trim Panel**

## OPTIONAL EQUIPMENT

JBL® 11-speaker Premium Cab Sound System

## Interior

**50" HDTV**

**Satellite system ready**

**Digital TV amplified antenna system**

**HDMI Matrix Central Audio/Video Selection System**

**MCD solar/blackout roller shades**

**Soft vinyl ceiling**

**Porcelain tile floors**

**Accent strip lighting**

**Multi-plex OnePlace® systems center**

**Dual-pane, tinted, frameless windows**

**LED ceiling lights**

**Washer/dryer prep**

**Blu-ray™ Home Theater System** w/soundbar and subwoofer (lounge)

**Home theater soundbar system** (bedroom)

**Electric fireplace**

**Multi-plex wall switches**

**USB chargers**

## OPTIONAL EQUIPMENT

**Stacked washer and dryer**

**50" second lounge HDTV** (40A)

**Winegard Trav'ler** automatic HDTV antenna

**Winegard Trav'ler®** automatic HDTV satellite system for DirecTV® or Dish® Network

**Central Vacuum system**



## Galley

**Corian®** countertops w/dish draining grooves, bamboo sink covers, and decorative backsplash

**Residential stainless steel French door refrigerator** w/water dispenser, automatic icemaker, and bottom freezer drawer

**Microwave/convection oven** w/vented range fan (touch control)

**2-burner induction range top**

**Cold water filtration system**

**Pantry**

**Powered ventilator fan**

## OPTIONAL EQUIPMENT

**Dishwasher**

## Bath

**Corian countertop** w/decorative backsplash

**Shower 30"x41"** (40A)

**Shower 41"x30"** (42Q)

**Flexible, hand-held showerhead**

**Clear glass shower door**

**Powered roof vent(s)** (bath(s)) (42Q)

**Skylight**



**Tissue holder**

**Porcelain toilet w/electric flush**

**Area rug** (42Q)

**Towel bar(s)** (42Q)

**Towel ring(s)**

## Bedroom

**40" HDTV**

**Powered queen bed** w/Ideal Rest® Natural Reserve digital comfort control mattress w/remotes

**Bedsread and pillow shams**

**Headboard**

**Ceiling fan**

### OPTIONAL EQUIPMENT

**Powered king bed** w/Ideal Rest Natural Reserve digital comfort control mattress w/remotes

## Exterior

**Entertainment Center** w/HDTV, soundbar, and wireless subwoofer

**Powered patio awning** w/motion sensor and LED lighting

**KeyOne® lock system**

**Porch light** w/interior switch

**Powered entrance awning** w/LED lighting

**Lighted storage compartments**

**Driver's side docking/service light**

**Lighted stepwell** w/interior switch

**Slideout storage compartment tray**

**Storage containers** w/lids (4)

**Automatic entrance steps**

**Auxiliary side lamps**

**Full-width mudguard**

**Lower front protective mask**

**Sikkens full-body paint**

**Premier clearcoat automotive finish**

**Rear mud flaps**

### OPTIONAL EQUIPMENT

**Portable refrigerator/freezer on roll-out tray**

**Ladder** (backwall)

**Undercarriage lighting**

## Heating & Cooling System

**TrueAir® Maximum Comfort air conditioner, 13,500 BTU** (3 cooling units)

**Air conditioner heat pumps**

**Multi-zone thermostat**

**Aqua-Hot® 400 hydronic dual-zone heating system** w/ continuous hot water

## Electrical System

**Service Center** lighted, cable TV input, 50-amp. power cord, QuickPort® shoreline/generator automatic changeover switch, portable satellite hookup

**2,800-watt inverter/charger** w/remote panel w/battery disconnect

**100-watt solar panel battery charger**

**10,000-watt Cummins Onan® Quiet Diesel™ generator** (able to operate 3 roof air conditioners)

**Cummins Onan Energy Command™ automatic generator start system**

**Auxiliary start circuit**

**AC/DC electrical distribution system**

**6 deep-cycle Group 31 Marine/RV AGM batteries**

**Battery disconnect system** (coach and chassis)

**PowerLine® Energy Management System**

**Automatic dual-battery charge control**

**Exterior antenna jack and AC duplex**

## Plumbing System

**Service Center** pressurized city water hookup w/diverter fill, freshwater drain, drainage valves, exterior wash station w/pump switch, black tank holding tank flushing system, 20' sewer hose w/QuickConnect®, QuickPort

**On-demand water pump**

**Hydronic heating system**

**TrueLevel™ holding tank monitoring system**

**Winterization Package** water heater bypass valve, siphon tube, and diverter valve

**Full-coach water filtration system**

**Removable LP tank** w/shut off valve

**LPG accessory connection** (patio area)

**Heated holding tank compartment**

## Safety

**LP, smoke, and carbon monoxide detectors**

**10 BC fire extinguisher**

**Ground fault interrupter**

**Fog lamps**

**High-mount brake lamps**

**Daytime running lamps**

## Warranty<sup>7</sup>

**3-year/100,000-mile basic limited warranty<sup>8</sup>**

**10-year limited parts-and-labor warranty on fiberglass roof skin<sup>8</sup>**

### FOOTNOTES

- The height of each model is measured to the top of the tallest standard feature and is based on the curb weight of a typically equipped unit. The actual height of your vehicle may vary by several inches depending on chassis or equipment variations. Please contact your dealer for further information.
- Floorplans feature a wide-body design - over 96" in making your purchase decision, you should be aware that some states restrict access on some or all state roads to 96" in body width. Before making your purchase decision, you should confirm the road usage laws in the states of interest to you.
- The load capacity of your motorhome is designated by weight, not by volume, so you cannot necessarily use all available space when loading your motorhome.
- Capacities are based on measurements prior to tank installation. Slight capacity variations can result due to installation applications.
- Capacities shown are tank manufacturer's listed water capacity (W.C.). Actual filled LP capacity is 80% of listing due to overfilling prevention device on tank.
- Actual towing capacity is dependent on your particular loading and towing circumstances which includes the GVWR, GAWR, and GCWR as well as adequate trailer brakes. Please refer to the Operator's Manual of your vehicle for further towing information.
- See separate chassis warranty.
- See your dealer for complete warranty information.

NA Not Available

Not all items available in combination. See dealer for details.

Winnebago's® continuing program of product improvement makes specifications, equipment, model availability, and prices subject to change without notice. Published content reflects the most current product information at time of printing. Please consult your dealer for individual vehicle features and specifications.