

2018 HOLIDAY RAMBLER NAVIGATOR/NAVIGATOR XE

# NAVIGATOR/NAVIGATOR XE

2018 HOLIDAY RAMBLER  
CLASS A DIESEL



HOLIDAY RAMBLER  
RV GROUP

# NAVIGATOR XE

## TOP FEATURES

- 300HP (33D) or 340HP (35E, 35M, 36U) Cummins® ISB 6.7L Engine w/Exhaust Brake
- 2100 MH Allison® 6-Speed, Electronic-Shift Transmission (33D) or 2500 MH Allison® 6-Speed, Electronic-Shift Transmission (35E, 35M, 36U)
- 90 Gallon Fuel Tank
- Impressive Pass-Thru Storage
- 84" Interior Height
- Hardwood Cabinets, Doors & Drawers
- Hide-A-Loft™ Drop-Down Queen Bed
- Central Vacuum System
- Residential Refrigerator
- Memory Foam Mattress



Navigator XE 33D is shown in Vintage Sandstone décor with High Gloss Italian Sienna cabinetry.

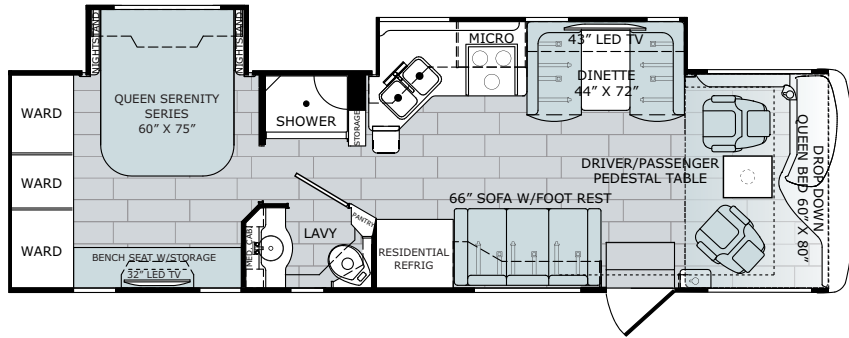


This is living.

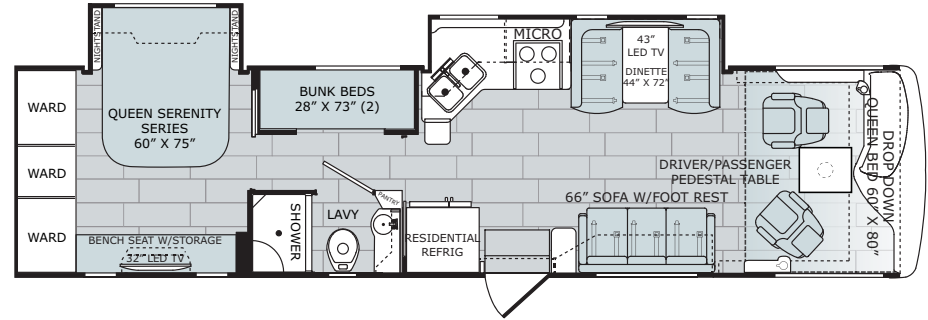
When you're looking to navigate your next journey, there's a coach that offers residential style, spacious floorplans, high-class amenities and more — the 2018 Navigator XE. This Holiday Rambler motorhome makes a statement with a spacious wide body design that features an 84" interior ceiling height, three luxurious paint packages and four floorplans that span more than 33- 37' in length. Riding on a Roadmaster™ chassis and sporting a large power awning, the XE makes each destination a dream come true.

# NAVIGATOR XE FLOORPLANS

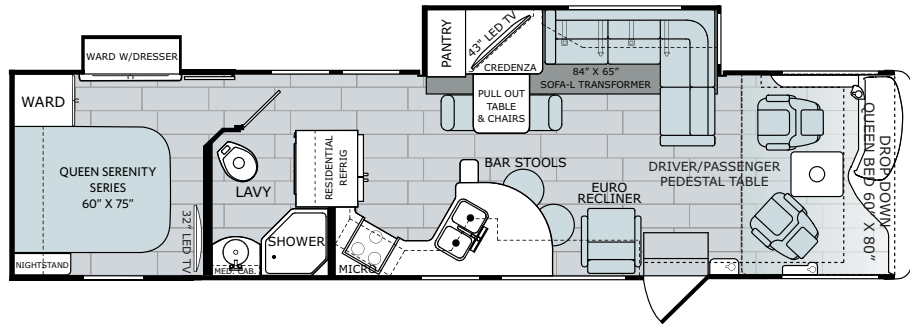
**33D** Options: 126, 815



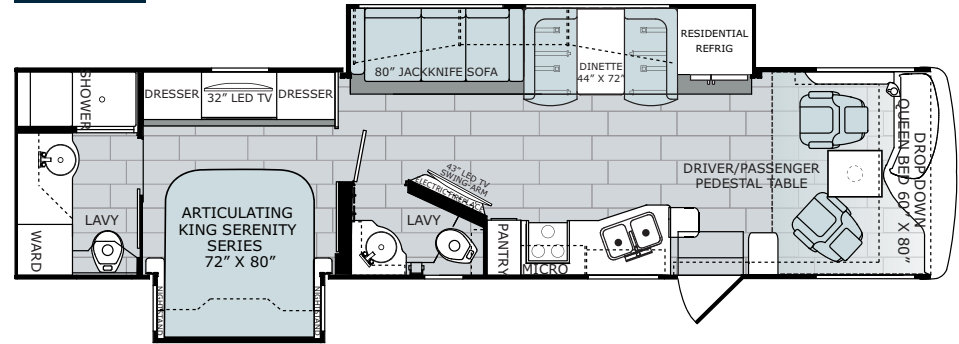
**35E** Options: 126, 157, 815



**35M** Options: 126



**36U** Options: 126, 194, 830



## Available Options



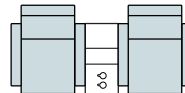
OPT. 126  
WASHER  
/DRYER



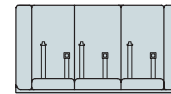
OPT. 126 (36U)  
SIDE BY SIDE  
WASHER/DRYER



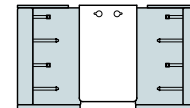
OPT. 157  
DUAL FLAT PANEL  
TV PACKAGE  
FOR BUNKS



OPT. 194  
THEATRE SEATING  
SOFA W/INCLINERS



OPT. 815  
66"  
FOLDAWAY  
SLEEPER



OPT. 830  
FACING DINETTE

# NAVIGATOR XE STANDARDS AND OPTIONS

## INTERIOR THROUGHOUT

- 120V/12V AC/DC Converter
- 20,000/25,000 Btu/ Furnaces (33D, 35E)
- 20,000/34,000 Btu/ Furnaces (36U)
- 34,000 Btu/ Furnace (35M)
- 6 Gallon Quick Recovery Water Heater (Gas/Electric)
- 84" Interior Ceiling Height
- Auto Generator Start
- Central Vacuum System
- Centralized Control Monitoring
- Crown Molding
- Dedicated Full-Length, Metallic A/C Ducting
- Deluxe Roller Bearing, Full Extension Drawer Guides & Transit-Ship Locks
- Demand Water Pump w/Filter
- Driver/Passenger Pedestal Table
- Dual Lo-Profile, High-Efficiency A/C w/Chill Grills & Bedroom Heat Pump
- Fan-Tastic® Power Roof Vent w/ Wall Switch (3) (36U)
- Flat Interior Ceiling
- Four 6V Deep-Cycle House Batteries
- Hardwood Cabinet Doors/Drawers
- HDMI Video System
- Hide-A-Loft™ Drop Down Queen Bed
- LED Lighting
- Manual Day/Night Double Roller Shades
- Ozite Lined Storage
- Passenger Cup Holder Console w/Integrated Magazine Rack
- Power Passenger Chair w/ Power Footrest
- Satellite Radio (Subscription Required)
- Soft-Touch Vinyl Ceiling
- Spacious Wide Body Design
- Tuff-Pex™ Plumbing System
- Vinyl Flooring
- Wall Switches (Includes Switches for Ceiling Lights & Vents)
- Water Heater Bypass
- Water-pump Switches in Multiple Locations
- Whole Coach Water Filtration System
- Wood Finish Return Air Intake for Furnace

### OPTIONS

- CSA Package (Canadian Specs)\*\*
- Premium Radio Upgrade

## DRIVER CONVENIENCE

- (2) 12V Power Outlets at Dash
- 110V Power Outlet at Dash
- 3-Point Seat belts at Driver & Front Passenger Seats (w/ Adjustable Shoulder Straps)
- Air Suspension Dump Switch
- AM/FM/DVD Touch Screen Radio w/ Main/Auxiliary Power Switch
- Automotive Wrap-Around Dash
- Auxiliary Start Circuit Switch
- Color Back-Up Monitor w/Side Cameras Integrated in Mirrors
- Cruise Control
- Aurora® High-Output Auto A/C Heater Combo
- Driver & Passenger Roller Shades
- Driver Console Cup Holders
- Driver/Front Passenger Soft-Touch Captain's Chairs w/Reclining Back/ Slide Controls & Power Driver Seat
- Dual Dash Monitors
- Easy-Access Battery Disconnect System
- Front Power Roller Shades/Blinds
- Intermittent Wiper Control
- Remote Heated Power Exterior Mirrors w/Turn Signals & Side-view Cameras
- Soft-Touch Automotive Dash
- Tilt/Telescoping Steering Wheel

## LIVING ROOM

- 43" LED HDTV
- 66" Sofa w/Footrest (33D, 35E)
- Entry Assist Handle
- Fireplace (36U)
- Soft Touch Residential Style Seating
- Select Hardwood Overhead Face Frames
- Bose Solo 5 Sound Bar w/LG Blu-Ray/DVD Player (36U)
- Sony® 5.1 Home Theater System w/Built-in AM/FM/DVD & Surround Sound Speakers
- TV Antenna w/Signal Booster

### OPTIONS

- Theatre Seating Sofa w/Recliners (36U)
- Facing Dinette (36U)
- 66" Foldaway Sleeper (33D, 35E)

## GALLEY

- 3 Burner Range w/High Output/ Piezo Igniter w/Cooktop Cover
- Select Adjustable Cabinet Shelves
- Cabinet Toe Kicks
- Dream Dinette Mechanism
- Full Mosaic Glass Tile Backsplash
- Galley Window w/Mini Blinds
- Select Hardwood Overhead Face Frames
- Solid Surface Dinette Tabletop
- Large, 50/50 Dual Stainless Steel Sink
- LED Task Lighting
- Polished Solid-Surface Countertop w/Deco Edge
- Pull Out Pantry
- Residential Refrigerator w/2000W Inverter
- Stainless Steel Convection Microwave Oven w/Built-in Range Hood & Lights
- Single-Handle Galley Faucet w/ Pull Down Sprayer
- Polished Solid-Surface Dinette Table & Range Covers
- Under-Galley Shelving & Wastebasket

## BEDROOM

- 32" LED HDTV
- Bedspread w/Decorative Pillows
- Bunk Beds (35E)
- Dual 110V Outlets (Select Models)
- Overhead Cabinets
- King Exclusive Dream Easy Series 72" x 80" (36U)
- Queen Dream Easy Memory Foam Mattress (33D, 35E, 35M)
- Rear Speakers
- Remote Generator Start Switch
- Under Bed Storage (33D, 35M, 35E)
- Wardrobe w/Cedar Lining
- Surf-X Bedroom Tops

### OPTIONS

- King Panel TV's (35E)
- Side-by-Side Washer/Dryer (36U)
- Washer/Dryer Combo (33D, 35E, 35M)

## BATHROOM

- A/C Venting
- Adjustable Shelving (Select Cabinets)
- Hardwood Bath Door/Trims
- LED Lighting Over Sink
- Mosaic Glass/Stone Tile Backsplash
- One Piece Fiberglass Shower w/ Convenience Shelf, Skylight & Low Threshold
- Polished Brushed Nickel Double-Handle Faucet
- Polished Brushed Nickel Towel Bars & Rings
- Porcelain Toilet w/Water Saver
- Stainless Steel Sink (35M, 33D, 35E)
- Vacuum Flush Toilet Bath

## SAFETY/CONVENIENCE

- 30" Wide Entry Door
- Carbon Monoxide, Propane & Smoke Detectors/Alarms
- Central Electrical Panel
- Energy Management System (EMS) w/Soft-Start
- Fire Extinguisher
- Multiple Seatbelt Locations
- Neutral Loss Protection

## EXTERIOR THROUGHOUT

- 50-Amp Service w/LED Power Cord Indicators
- 6.0 kW Onan® Quiet Diesel Generator (33D, 35E, 35M, 36U)
- Aluminum Bus-Style Side Swing Luggage Doors
- Aluminum Extruded Slide Ramps
- Awning Rail/Drip Molding
- Clear Protective Front Mask
- Door-Side 110V Patio Receptacle
- Dryseal™ Edge Coating (Water-Wicking Wall Edge Coating)
- Dual Glazed Windows
- Exterior Entertainment Center w/32" LED HDTV & High Output, Splash-proof AM/FM/DVD Sound System
- Fiberglass Rear Cap w/High-Mounted Center Brake Light
- Fiberglass Wheel-Well Trims
- Five-Point Build System™
- Frameless Flush Mount Windows
- Full-Body Paint
- LED Clearance Lights
- Park Cable Receptacle
- Power Awning w/LED Light Strip & Wind Sensor Ready
- Pre-Wired For Easy DSS Antenna Installation
- Seamless Beltline Trim
- Solar Pre-Wire Kit
- Tapered Slideout Box Tops & Debris Awnings
- Tuff-Roof™ Low-Maintenance Roof System
- Utility Compartment w/Exterior Shower
- Water Pump Switch (Located in Service Compartment)

### OPTIONS

- Roof Vent Rain Covers
- King Dome Satellite

## AUTOMOTIVE

- 22.5" Aluminum Wheels
- Fog Lamps
- Large One-Piece Bonded Windshield
- Mud Flaps
- Single-Motor Windshield Wipers w/Wet Arm
- Under-Hood Utility Light

## SAFETY/CONVENIENCE

- 20' Sewer Hose
- 4-Wheel ABS Brakes
- (4) 6V/Deep-Cycle House Batteries
- Automatic Hydraulic Leveling Jacks
- Automotive Safety Glass
- Daytime Running Lights
- Easy-Sweep Flooring at Entry Step
- Entry Assist Handle
- Entry Door w/Screen Door & Deadbolt Lock
- Large Egress Window in Bedroom
- Lighted Entry Assist Handle
- Porch Light (Door-side)
- Power Entry Step
- Rear, Front and Side Marker Lights (Select LED)
- Toilet Tank San-T-Flush™ System
- Touch Sensor Tank Monitoring System
- Utility Compartment w/Exterior Shower

## STORAGE

- Continuous One-Piece Compartment Seals
- Lighted Compartments
- Pass-Through Storage
- Rotocast Molded Storage Boxes

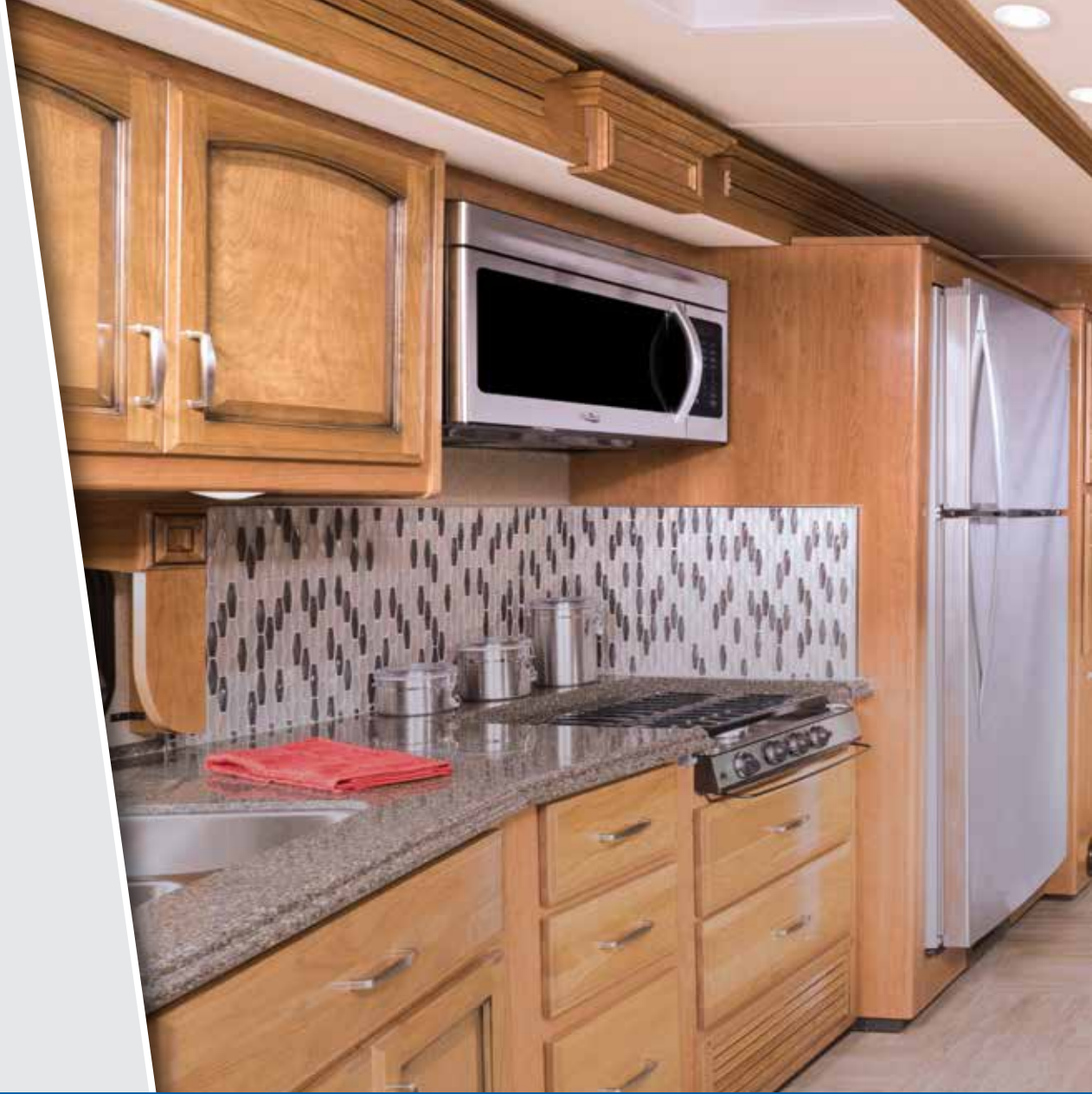
## BODY STRUCTURE

- Basement Storage
- Heated Water & Holding Tank Compartments
- Chassis Construction
- Powerframes™ Precision, Welded Aluminum Interlocking Frames
- Powerlock System™ (Interlocking Floors, Walls, & Ceiling)
- Quiet Cool Ducted A/C
- Radiused Entry Door
- Raised Space Frame Foundation
- Solid Bead-Foam Engineered Fit Insulation™

# NAVIGATOR

## TOP FEATURES

- Power Bridge Chassis® - Freightliner® XCM Series
- 340 HP Cummins® ISB 6.7L Engine
- 8.0 Kw Onan® Quiet Diesel Generator
- Rand McNally GPS
- Villa® Furniture
- Electric Fireplace
- LG® TV & A/V Electronics
- Hardwood Window Valances
- Hardwood Ceiling Treatment
- Power Awning w/LED Light Strip
- Power Cord Reel
- Central Vacuum System
- Front Compartment Tray





The Navigator 39F is shown in Vintage Sandstone décor with Italian Sienna High Gloss cabinetry.

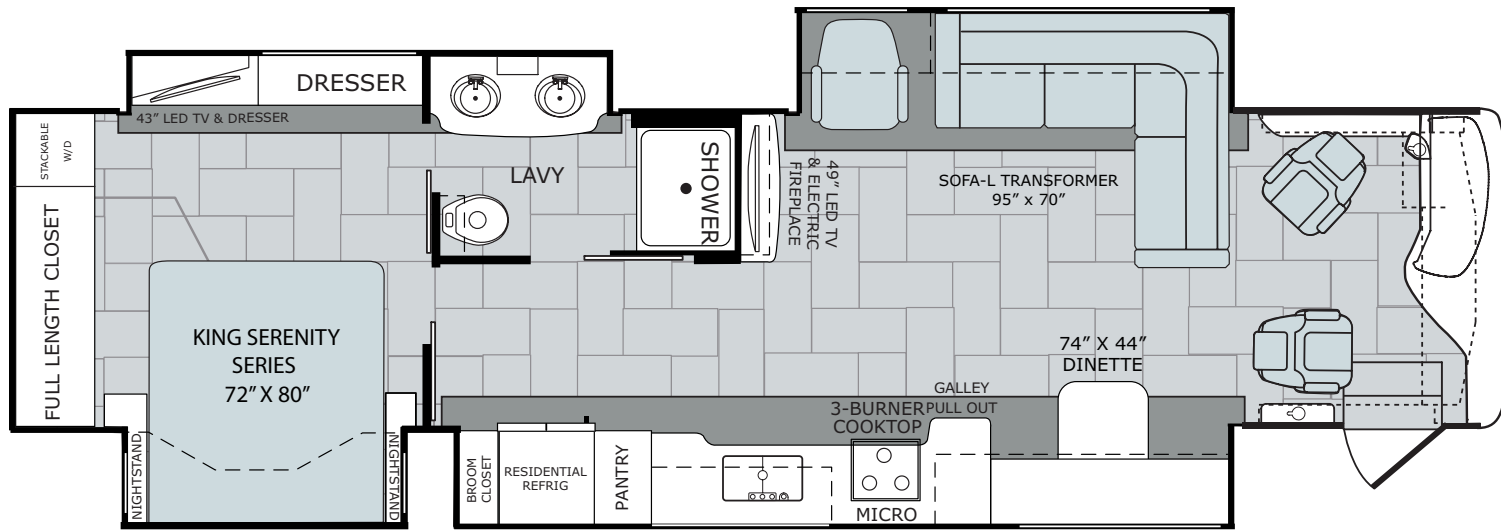
# This is living.

Holiday Rambler pulled out all the stops for the 2018 Navigator RV. Featuring a deluxe floorplan that brings high-class inclusions and tons of refined finishing touches to the table, these homes are for true RV enthusiasts everywhere. The spacious wide-body designs pack in front-to-back premium offerings. An electric fireplace, luxury bathrooms, king-size beds and an exemplary galley featuring solid-surface countertops is just a taste of what these powerful motorhomes have to offer.

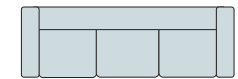
# NAVIGATOR FLOORPLANS

38F

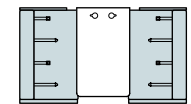
Options: 203, 830



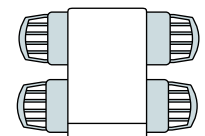
## Available Options



OPT. 203  
SOFA



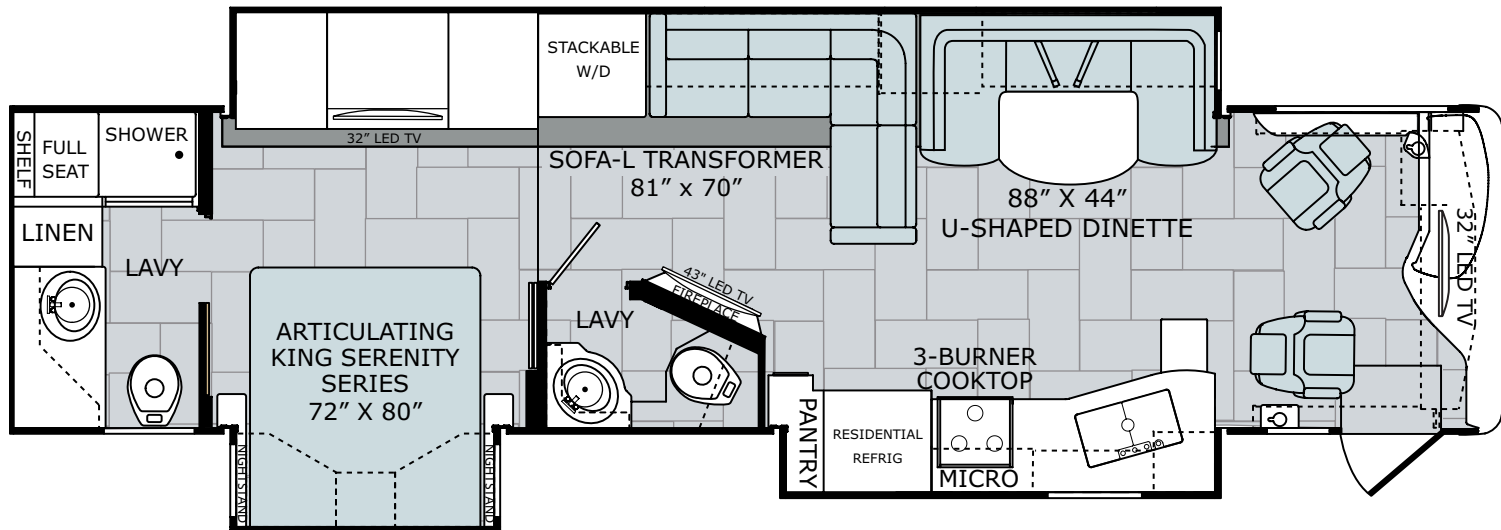
OPT. 830  
FACING DINETTE &  
SOFA BED W/AIR  
MATTRESS  
(38F ONLY)



CRENZENA  
OPT. 833  
FREE-STANDING DINETTE  
WITH CRENZENA

38K

Options: 833





# NAVIGATOR STANDARDS AND OPTIONS

## INTERIOR THROUGHOUT

- 120V/12V AC/DC Converter
- 25,000/30,000 Btu/h Dual Furnaces (38F, 38K)
- Water Heater 16-Gallon Output
- 84" Interior Ceiling Height
- Auto Generator Start
- Bedroom Heat Pump
- Ceiling Plenum
- Central Vacuum System
- Centralized Control Monitoring
- Crown Molding
- Dedicated Full-Length, Metallic A/C Ducting
- Deluxe Roller Bearing, Full Extension Drawer Guides & Transit-Ship Locks
- Demand Water Pump w/Filter
- Dual Roof-Mounted, High-Efficiency A/C w/Solar Panel, Chill Grills & Bedroom Heat Pump
- Fan-Tastic® Power Roof Vent w/ Wall Switch (3) (38K)
- Flat Interior Ceiling
- Manual Day/Night Roller Shades Throughout - Black/Black
- Hardwood Cabinet Doors/Drawers
- HDMI Video System
- LED Lighting
- Ozite Lined Storage
- Power Passenger Chair w/Power Footrest
- Satellite Radio (Subscription Required)
- Soft-Touch Vinyl Ceiling
- Spacious Wide Body Design
- Tuff-Pex™ Plumbing System
- Vinyl Flooring
- Wall Switches (Includes Switches for Ceiling Lights & Vents)
- Wall-to-Wall Vinyl Tile Flooring
- Water Heater Bypass
- Water Pump Switches in Multiple Locations
- Whole Coach Water Filtration System
- Wood Finish Return Air Intake for Furnace
- Quiet Cool Ducted A/C

### OPTIONS

- CSA Package (Canadian Specs)\*\*

## DRIVER CONVENIENCE

- (2) 12V Power Outlets at Dash
- 110V Power Outlet at Dash
- 3-Point Seat Belts at Driver & Front Passenger Seats (w/ Adjustable Shoulder Straps)
- Air Suspension Dump Switch
- Automotive Wrap-Around Dash
- Auxiliary Start Circuit Switch
- Color Back-Up Monitor w/Side Cameras Integrated in Mirrors
- Cruise Control
- Aurora® High-Output Auto A/C Heater Combo
- Driver & Passenger Roller Shades
- Driver Console Cup Holders
- Driver/Passenger Soft-Touch Captain's Chairs w/Reclining Back/Slide Controls w/Power Driver Seat
- Dual Dash Monitors
- Easy-Access Battery Disconnect System
- Front Power Roller Shades/Blinds
- Intermittent Wiper Control
- Remote Heated Power Exterior Mirrors w/Turn Signals & Side-view Cameras
- Soft-Touch Automotive Dash
- Tilt/Telescoping Steering Wheel
- Touch Screen Radio w/Built-In GPS w/Main/Auxiliary Power Switch

## LIVING ROOM

- 32" LED HDTV In Front Overhead
- 43" LED HDTV (38K)
- 49" LED HDTV (38F)
- 5.1 Home Theater System w/Built-in AM/FM/DVD & Surround Sound Speakers
- Bose Solo 5 Sound Bar w/LG Blu-Ray/DVD Player (38F)
- TV Antenna w/Signal Booster
- Entry Assist Handle
- Fireplace (38K, 38F)
- Soft Touch Residential Style Seating
- Select Hardwood Overhead Face Frames
- U-Shape Dinette (38K)
- Free Standing Dinette w/Credenza (38F)
- Expandable L-Sofa w/Air Mattress (38F)
- Expandable L-Sofa w/Jack-Knife (38K)
- Euro Chair (38F)

### OPTIONS

- Free-Standing Dinette w/Credenza (38K)
- 95" x 70" Sofa (38F)

## GALLEY

- 3 Burner Range w/High Output/ Piezo Igniter w/Cooktop Cover
- Select Adjustable Cabinet Shelves
- Cabinet Toe Kicks
- Full Mosaic Glass Tile Backsplash
- Galley Window w/Mini Blinds
- Galley Window w/Roller Shade (38F)
- Select Hardwood Overhead Face Frames
- Solid Surface Dinette Tabletop
- Large, 50/50 Dual Stainless Steel Sink
- LED Task Lighting
- Polished Solid-Surface Countertop w/Deco Edge
- Pull Out Pantry (38F)
- Residential Refrigerator w/2000W Inverter & 4 House Batteries
- Convection Stainless Steel Microwave Oven w/Built-In Range Hood & Lights
- Single-Handle Galley Faucet w/Pull Down Sprayer
- Polished Solid-Surface Dinette Table & Range Covers
- Under-Galley Shelving & Wastebasket

### OPTIONS

- Dream Dinette Mechanism (38F)

## BEDROOM

- 32" LED HDTV (38K)
- 43" LED HDTV (38F)
- Bedspread w/Decorative Pillows
- Dual 110V Outlets (Select Models)
- King Exclusive Dream Easy Series (38K)
- King Memory Foam Mattress (38F)
- Rear Speakers
- Overhead Cabinets
- Remote Generator Start Switch
- Under Bed Storage (38F)
- Rear Wardrobe w/Cedar Lining, Carpet Floor & Wire Organizer (38F)
- Dual Rear Wardrobe w/Cedar Lining, Hinging Rods (38K)
- Stackable Washer & Dryer

## BATHROOM

- A/C Venting
- Adjustable Shelving (Select Cabinets)
- Glass Shower Enclosure w/ Skylight & Low Threshold
- Hardwood Bath Door/Trims
- LED Lighting Over Sink
- Mosaic Glass/Stone Tile Backsplash
- One Piece Fiberglass Shower w/ Convenience Shelf
- Polished Brushed Nickel Double Handle Faucet
- Polished Brushed Nickel Towel Bars & Rings
- Porcelain Toilet w/Water Saver
- Stainless Steel Sink
- Porcelain Macerator Toilet (38F, 38K)

## SAFETY/CONVENIENCE

- 30" Wide Entry Door
- Carbon Monoxide, Propane & Smoke Detectors/Alarms
- Central Electrical Panel
- Energy Management System (EMS) w/Soft-Start
- Fire Extinguisher
- Multiple Seatbelt Locations

## EXTERIOR THROUGHOUT

- 50-Amp Service w/LED Power Cord Indicators
- 8.0 kW Onan® Quiet Diesel Generator (38F, 38K)
- Aluminum Bus-Style Side Swing Luggage Doors
- Aluminum Extruded Slide Ramps
- Awning Rail/Drip Molding
- Clear Protective Front Mask
- Door-Side 110V Patio Receptacle
- Dryseal™ Edge Coating (Water-Wicking Wall Edge Coating)
- Dual Glazed Windows
- Electrical System w/Neutral Loss Protection
- Exterior Entertainment Center w/32" LED HDTV & High Output, Splash-proof AM/FM/DVD Sound System
- Fiberglass Rear Cap w/High-Mounted Center Brake Light
- Fiberglass Wheel-Well Trims
- Five-Point Build System™
- Frameless Flush Mount Windows
- Full-Body Paint
- LED Clearance Lights
- Park Cable Receptacle
- Power Awning w/LED Light Strip & Wind Sensor React
- Seamless Beltline Trim
- Tapered Slideout Box Tops & Debris Awnings
- Tuff-Roof™ Low-Maintenance Roof System
- Utility Compartment w/Exterior Shower
- Water Pump Switch (Located in Service Compartment)
- 1st Full Bay 90 Slide Trays (38B, 38K)
- 2nd Full Bay 54 Slide Trays (38F)

### OPTIONS

- King Dome Satellite
- Roof Vent Rain Covers

## AUTOMOTIVE

- 22.5" Aluminum Wheels
- Large One-Piece Bonded Windshield
- Mud Flaps
- Single-Motor Windshield Wipers w/Wet Arm
- Under-hood Utility Light

## SAFETY/CONVENIENCE

- 20' Sewer Hose
- 4-Wheel ABS Brakes
- (4) 6V/Deep-Cycle House Batteries
- Automatic Hydraulic Leveling Jacks
- Automotive Safety Glass
- Daytime Running Lights
- Easy-Sweep Flooring at Entry Step
- Entry Door w/Screen Door & Deadbolt Lock
- Large Egress Window
- Lighted Entry Assist Handle
- Porch Light (Door-side)
- Power Entry Step
- Rear, Front and Side Marker Lights (Select LED)
- Toilet Tank San-T-Flush™ System
- Touch Sensor Tank Monitoring System
- Utility Compartment w/Exterior Shower

## STORAGE

- Continuous One-Piece Compartment Seals
- Lighted Compartments
- Pass-Through Storage

## BODY STRUCTURE

- Basement Storage
- Heated Water & Holding Tank Compartments
- Chassis Construction
- Powerframes™ Precision, Welded
- Aluminum Interlocking Frames
- Powerlock System™ (Interlocking Floors, Walls, & Ceiling)
- Radiused & Cambered Entry Door
- Raised Space Frame Foundation
- Solid Bead-Foam Engineered Fit Insulation™

# DÉCOR & EXTERIOR OPTIONS

Dark Cherry High Gloss



City Scape



Italian Sienna High Gloss



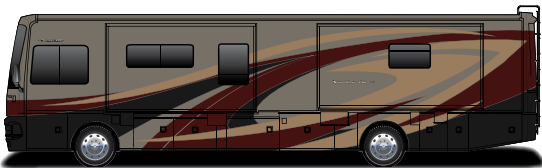
Vintage Sandstone



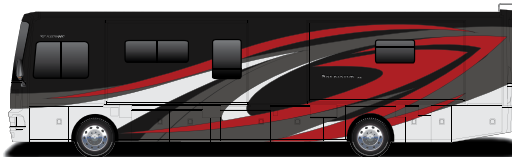
1 | Sofa 2 | Accent 3 | Bedspread 4 | Countertop 5 | Flooring 6 | Carpet

## NAVIGATOR XE

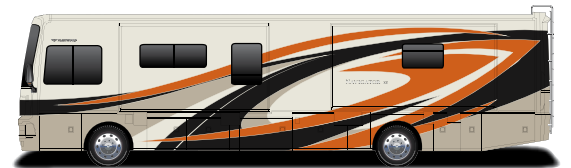
Beach



Loft

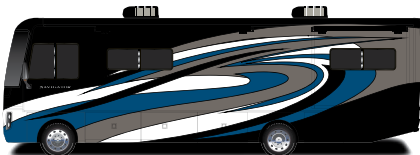


Sterling

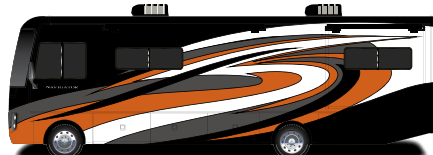


## NAVIGATOR

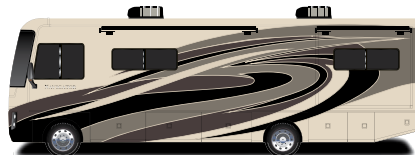
Centennial



Iron Blaze



Natural Freedom



Silver Ridge



# WEIGHTS AND MEASUREMENTS

| CHASSIS                                | NAVIGATOR XE |        |        |        | NAVIGATOR |        |
|----------------------------------------|--------------|--------|--------|--------|-----------|--------|
|                                        | MODEL        | 33D    | 35E    | 35M    | 36U       | 38F    |
| Wheelbase                              | 208"         | 242"   | 242"   | 252"   | 263"      | 252"   |
| Front GAWR (lbs) <sup>2</sup>          | 10,500       | 10,500 | 10,500 | 10,500 | 12,400    | 12,400 |
| Rear GAWR (lbs) <sup>2</sup>           | 17,500       | 17,500 | 17,500 | 19,000 | 21,000    | 21,000 |
| GCWR (lbs) <sup>3</sup>                | 30,000       | 33,000 | 33,000 | 33,000 | 33,000    | 33,000 |
| Hitch Rating Weight (lbs) <sup>†</sup> | 10,000       | 10,000 | 10,000 | 10,000 | 10,000    | 10,000 |
| Tongue Weight (lbs) <sup>4</sup>       | 1,000        | 1,000  | 1,000  | 1,000  | 1,000     | 1,000  |
| Fuel Capacity (gal)                    | 90           | 90     | 90     | 90     | 100       | 100    |

## ROADMASTER™ CHASSIS (300HP - 33D)

Model: Freightliner® XCS Series  
 Engine: Cummins ISB 6.7L  
 Transmission: Allison®, 2100 MH 6-speed w/Electronic Shifter  
 Alternator: Delcom Remy 160 Amp  
 Torque: 660 lb.-ft. @ 1,600 RPM  
 Horsepower: 300HP

## ROADMASTER™ CHASSIS (340HP - 35E, 35M, 36U, 38F, 38K)

Model: Freightliner® XCM Series  
 Engine: Cummins ISB 6.7L  
 Transmission: Allison®, 2500 MH 6-speed w/Electronic Shifter  
 Alternator: Delcom Remy 160 Amp  
 Torque: 700 lb.-ft. @ 1,600 RPM  
 Horsepower: 340HP

## DIMENSIONS & CAPACITIES

| DIMENSIONS & CAPACITIES                             | NAVIGATOR XE |         |         |         | NAVIGATOR |          |
|-----------------------------------------------------|--------------|---------|---------|---------|-----------|----------|
|                                                     | MODEL        | 33D     | 35E     | 35M     | 36U       | 38F      |
| Overall Length <sup>4</sup>                         | 33' 11"      | 36' 9"  | 36' 9"  | 37' 7"  | 40' 1"    | 38' 7.5" |
| Overall Height (suspension inflated) <sup>5,6</sup> | 11' 10"      | 11' 10" | 11' 10" | 11' 10" | 12' 10"   | 12' 10"  |
| Overall Width (suspension inflated) <sup>5,6</sup>  | 102"         | 102"    | 102"    | 102"    | 102"      | 102"     |
| Interior Height (maximum)                           | 84"          | 84"     | 84"     | 84"     | 84"       | 84"      |
| Interior Width (maximum)                            | 96"          | 96"     | 96"     | 96"     | 96"       | 96"      |
| Patio Awning Width                                  | 17'          | 17'     | 20'     | 17'     | 18'       | 10' 8"   |
| Interior Storage (cu. ft.)                          | 140          | 160     | 170     | 164     | 173       | 151      |
| Exterior Storage (cu. ft.)                          | 133          | 161     | 161     | 164     | 156       | 156      |
| Fresh Water Holding Tank (gal)                      | 77           | 77      | 77      | 77      | 100       | 100      |
| Grey Water Holding Tank (gal)                       | 60           | 60      | 60      | 60      | 75        | 75       |
| Black Water Holding Tank (gal)                      | 32           | 32      | 32      | 32      | 50        | 50       |
| Appliance Propane Tank (gal) (WC) <sup>7</sup>      | 28.2         | 28.2    | 28.2    | 28.2    | 38.7      | 38.7     |
| Water Heater Tank (gal)                             | 6            | 6       | 6       | 6       | 10        | 10       |

# This is living.

At Holiday Rambler, your dream journey is our unwavering inspiration. Whether you're planning a rambling weekend getaway or imagining a cross-country holiday adventure, we know that owning a motorhome is a dream lifestyle. We take that dream seriously. **We focus on the idea of home — not the place, but the feeling.** Then we make sure to turn that feeling into one of the most envious getaways. Holiday Rambler. This is living...



HOLIDAY RAMBLER®

YOUR LOCAL DEALER

**REV**GROUP

Holiday Rambler is part of REV Recreation Group, a division of REV Group, Inc., a family of 29 industry-leading motor vehicle brands. At REV Group, we innovate, design and build products that connect and protect thousands of people every day—our trusted vehicles are engineered with the utmost rigor and precision to deliver the highest levels of performance, reliability, durability and safety.

#### DISCLAIMER

1. GVWR (Gross Vehicle Weight Rating) is the maximum permissible weight of this fully loaded motorhome. The GVWR is equal to or greater than the sum of the (UVW) unloaded vehicle weight plus the (OCCC) occupant cargo-carrying capacity\*.
  2. GAWR (Gross Axle Weight Rating) is the maximum permissible loaded weight a specific axle is designed to carry.
  3. GCWR (Gross Combined Weight Rating) is the value specified by the motorhome manufacturer as the maximum allowable loaded weight of this motorhome with its towed vehicle. Towing and braking capacities may be different. Refer to Holiday Rambler and chassis manufacturer's manuals for complete information.
  4. Length measured from front bumper to rear bumper (excludes accessories).
  5. Excludes safety equipment and awnings.
  6. Motorhomes feature a body width over 96" which will restrict your access to certain roads. Before purchasing, you should research any state and/or province road laws which may affect your usage.
  7. Tank manufacturer's listed water capacity (WC). Actual propane capacity is 80% of water listing as required by the safety code.
- \* The chassis manufacturer recommends the installation of a supplemental brake control system to activate the brakes on the vehicle or trailer you are towing. Hitch receiver ratings expressed are maximum for the hitch receiver installed and may require the purchase of additional equipment that is dependent on the weight of the towed load. Consult with hitch receiver manufacturer for further information.
- \*\* UVW and OCCC are found on the label containing the federal certification tag in each RV.
- \*\*\* The Minimum Towable Load of this vehicle is the available weight capacity, up to GCWR, when the coach is fully loaded to maximum GVWR. However, if the coach is loaded to something less than maximum GVWR, that extra available weight capacity can be added to your Towable Load. For example, if your coach is loaded to 1000lbs less than maximum GVWR, your Towable Load increases accordingly. Do not exceed the hitch rating weight, GVWR or GCWR.
- \*\*\* Seatbelts and locations are shown in the brochure for display purposes only. Actual numbers and locations will vary by model.
- \*\*\* All 2017 REV Recreation Group motorhomes include a limited one-year/15,000-mile coach warranty and three-year/45,000-mile structural warranty, whichever occurs first, and is fully transferable for the first 12 months.

#### CONTACT US

To locate a dealer near you, visit our website at [www.holidayrambler.com](http://www.holidayrambler.com) or call 1-877-252-4666. We can also be contacted at Holiday Rambler Customer Relations, P.O. Box 1007, Decatur, IN 46733.

**IMPORTANT—PLEASE READ:** Product information, photography and illustrations included in this publication were as accurate as possible at the time of printing. For further product information and changes, please visit our website at [www.holidayrambler.com](http://www.holidayrambler.com) or contact your local Holiday Rambler dealer. Prices, materials, design and specifications are subject to change without notice. All weights, fuel, liquid capacities and dimensions are approximate. Holiday Rambler has designed its recreational vehicles to provide a variety of uses for customers. Each vehicle features optimal seating, sleeping, storage and fluid capacities. The user is responsible for selecting the proper combination of loads (i.e., occupants, equipment, fluids, cargo, etc.) to ensure that the vehicle's capacities are not exceeded.

[www.holidayrambler.com](http://www.holidayrambler.com)

©2017 REV Group, Inc. Printed in the USA. Inventory Control Number NAVNAVXE18B1, 07/17. Model Year 2018, First Edition.