

Class A Motorhomes | 2018

Precept • Alante



HANDS DOWN, THE BEST RIDE.

2
YEAR
WARRANTY



Our Wings Get You There

Family fun happens when you spread your wings. Thanks to Jayco's amenity-packed floorplans, rock-solid construction and two full camping seasons, or 24,000 miles, of warranty coverage, you can. Greater peace of mind and added comfort mean better memories and lasting bonds. So go ahead. Hit the road—and let the good times fly.

Generations of Family Fun



PRECEPT

Alante

CLASS A MOTORHOMES

The lineup delivers an unmatched combination of performance and value. With industry-exclusive technology, premium ride and handling features, and oh-so-comfortable spaces, these coaches have something for every traveler.

THE JAYCO DIFFERENCE

1. **120-inch panoramic windshield** equipped with oversized wiper blades allows for maximum visibility
2. **Exterior entertainment center** comes standard with an LED TV mounted on a swivel bracket
3. **One-piece fiberglass roof** offers unmatched durability
4. **Lockable pass-through storage** with easy-to-use Slam-latch™ doors
5. **Seatbelts in every seating position** secure the most precious cargo

WE CARE ABOUT GETTING THERE AS MUCH AS BEING THERE

JRide® is a powerful blend of precise handling and renowned stability. Hands down, it's the best ride. **Experience JRide for yourself—visit your local dealer and take a test drive.**



A PRECEPT STANDARD

J+

Precept:
<https://www.jayco.com/products/class-a-motorhomes/2018-precept/jride-plus/>



AN ALANTE STANDARD

J

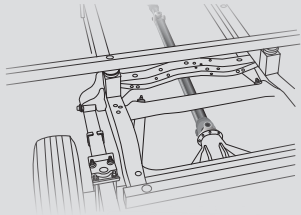
Alante:
<https://www.jayco.com/products/class-a-motorhomes/2018-alante/jride/>

*Each model contains different JRide components. Visit Jayco.com for details.

J J+

COMPUTER-BALANCED DRIVESHAFT

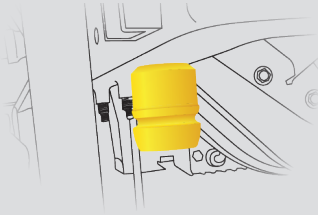
Ensures smooth and efficient power transfer from the engine to the wheels



J J+

BOUNCE BUMPERS

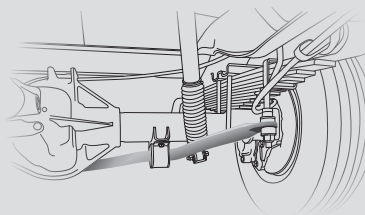
Assist during extreme road occurrences to absorb impact and dampen excess road noise



J J+

STABILIZER BAR(S)

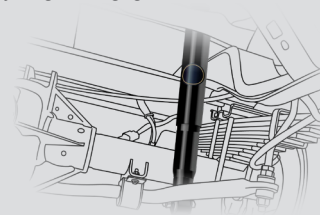
Reduces the body roll of a vehicle during fast cornering or over road irregularities



J J+

SACHS SHOCK ABSORBERS

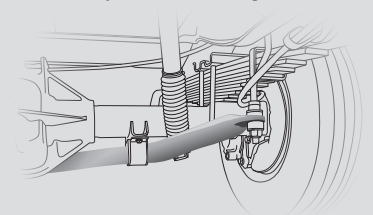
Large-diameter tube design pairs gas and hydraulics to resist heat and pressure while independently adjusting to changing road conditions



J+

HEAVY-DUTY FRONT STABILIZER BAR

A larger bar and polyurethane bushings, instead of rubber, transfer power faster for extra support, more stability and easier handling



GARMIN®
powered by **FUSION**



JAYCO-EXCLUSIVE GARMIN® INFOTAINMENT SYSTEM POWERED BY FUSION®

New for 2018 and exclusive to Jayco motorhomes, this easy-to-use, detachable touchscreen system delivers the convenience of connectivity, doubling as a custom RV navigation and four-zone AM/FM/Bluetooth®/USB entertainment system.



FEATURED FLOORPLAN: 33U

PRECEPT

FEATURE KEY: 1. Solid-surface countertops with integrated stainless steel sink 2. Day/night roller shades 3. Expandable L-shaped sofa (33U) 4. Overhead bunk with 750-pound capacity



TRUMA AquaGo® ON-DEMAND WATER HEATER

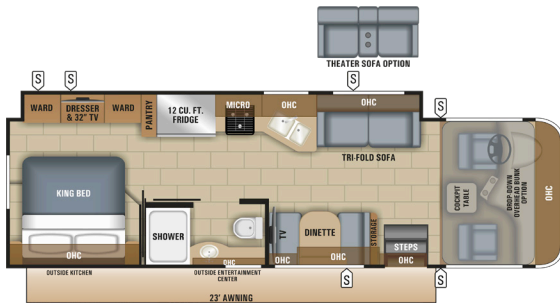


EXTERIOR ENTERTAINMENT CENTER WITH LED LIGHTS AND ELECTRIC AWNING

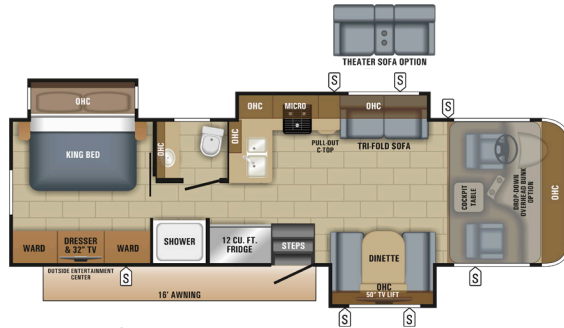


12-CUBIC-FOOT REFRIGERATOR

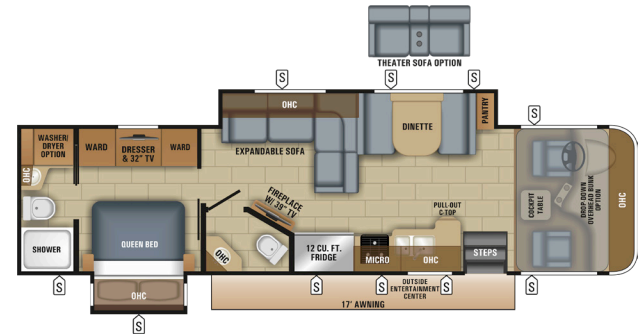
PRECEPT FLOORPLANS



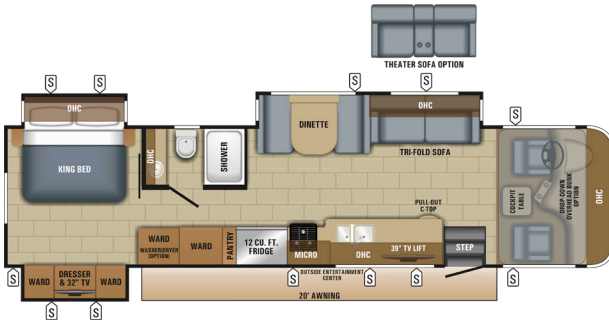
PRECEPT | 29V



PRECEPT | 31UL



PRECEPT | 33U



PRECEPT | 35S

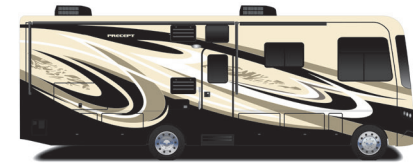


PRECEPT | 36T

PRECEPT EXTERIOR SELECTIONS



Graphics
Sahara Dream



Premium Paint Option
Desert Sky



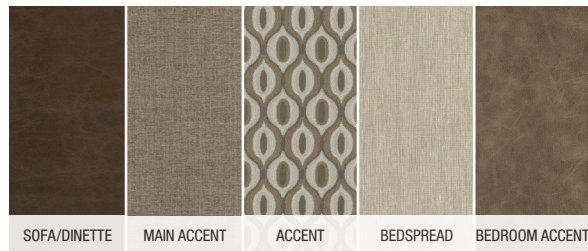
Premium Paint Option
Moon Bay



Premium Paint Option
Summer Wood

PRECEPT INTERIOR DÉCOR

CHATEAU



MINERAL



PRECEPT SPECS

| MODELS | | DIMENSIONS | | | | TANKS (GALS.) | | |
|-----------|-----------------|----------------|----------------------------|-----------------|------------|--|---------------------------|----------------------------|
| FLOORPLAN | EXTERIOR LENGTH | EXTERIOR WIDTH | EXTERIOR HEIGHT (WITH A/C) | INTERIOR HEIGHT | WHEEL BASE | FRESH WATER CAPACITY (INCLUDES WATER HEATER) | GREY WASTE WATER CAPACITY | BLACK WASTE WATER CAPACITY |
| 29V | 32' 2" | 101" | 12' 7" | 84" | 190" | 72 | 40 / 8.5 | 50 |
| 31UL | 32' 11" | 101" | 12' 7" | 84" | 228" | 72 | 40 | 50 |
| 33U | 36' 3" | 101" | 12' 7" | 84" | 228" | 72 | 40 / 31 | 51 / 31 |
| 35S | 36' 7" | 101" | 12' 7" | 84" | 228" | 72 | 40 | 50 |
| 36T | 38' 2" | 101" | 12' 7" | 84" | 242" | 72 | 40 / 40 | 51 / 51 |



FEATURED FLOORPLAN: 31R

ALANTE

FEATURE KEY: 1. Hardwood cabinet doors 2. Roller shades 3. LED living room TV
4. 3-burner range and oven with 9,000-BTU SuperBurner™ and piezo igniter



OPTIONAL DROP-DOWN BUNK WITH 750-POUND RATING

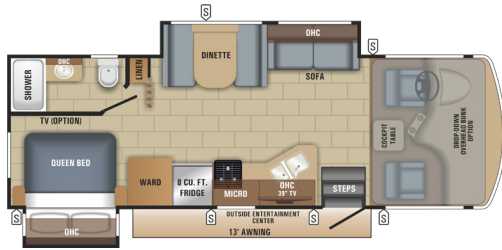


31V BEDROOM

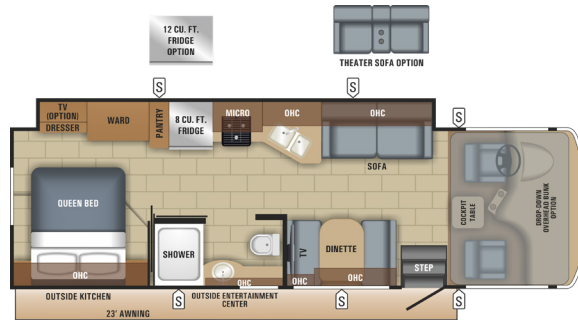


26X COCKPIT

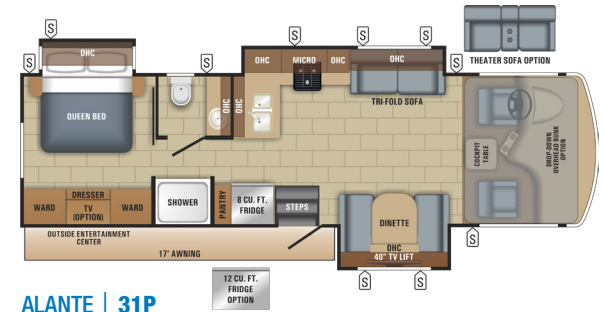
ALANTE FLOORPLANS



ALANTE | 26X



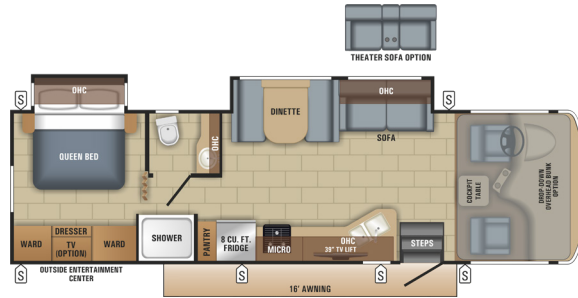
ALANTE | 29S



ALANTE | 31P



ALANTE | 31R



ALANTE | 31V

ALANTE EXTERIOR



Sparkling Sand Graphics

ALANTE INTERIOR DÉCOR

ALBANY



CHAMBRAY



NANTUCKET



ALANTE SPECS

| MODELS | | DIMENSIONS | | | | TANKS (GALS.) | | |
|-----------|-----------------|----------------|-------------------------------|-----------------|------------|---|------------------------------|-------------------------------|
| FLOORPLAN | EXTERIOR LENGTH | EXTERIOR WIDTH | EXTERIOR HEIGHT (WITH A/C) | INTERIOR HEIGHT | WHEEL BASE | FRESH WATER CAPACITY (INCLUDES WATER HEATER) | GREY WASTE WATER CAPACITY | BLACK WASTE WATER CAPACITY |
| 26X | 27' 5" | 101" | 12' 5" | 84" | 158" | 59 | 40 | 32 |
| 29S | 31' 4" | 101" | 12' 5" | 84" | 190" | 79 | 40 / 9 | 50 |
| 31P | 31' 6" | 101" | 12' 5" | 84" | 191" | 79 | 41 | 51 |
| 31R | 34' 10" | 101" | 12' 5" | 84" | 228" | 79 | 40 | 50 |
| 31V | 31' 11" | 101" | 12' 5" | 84" | 190" | 78 | 40 | 50 |

Gross Vehicle Weight Rating (GVWR): The maximum permissible weight of the motorhome, including the Unloaded Vehicle Weight (UUV) plus passengers, personal items, all cargo, fluids, options and dealer-installed accessories. The GVWR is equal to or greater than the sum of the UUV and the Cargo Carrying Capacity.

Gross Combined Weight Rating (GCWR): The maximum allowable combined weight of the motorhome used as a tow vehicle and the attached towed vehicle. It is important for your safety and enjoyment that you are aware of the weights and tow ratings of the RV you select. Consult a competent advisor for questions or advice.

Whether you are new to RVing or a veteran, get a feel for the performance of your RV before heading out on the roadways. When you tow a vehicle with your RV, you must drive differently than when you drive a single vehicle. Practice hooking up, driving, backing up and braking in a safe environment or seek out professional instruction. Jayco affixes a weight label to each RV which lists weight information for that vehicle. Refer to that label to verify the vehicle will meet your requirements.

STANDARDS AND OPTIONS

PRECEPT

CUSTOMER VALUE PACKAGE

| |
|---|
| JRide® Plus Package: Computer-balanced driveshaft, heavy-duty front stabilizer bar, standard rear stabilizer bar, jounce bumpers, SACHS shock absorbers |
| Automatic hydraulic leveling jacks |
| Jayco-exclusive Garmin® infotainment system powered by Fusion® |
| Backup and sideview cameras |
| Frameless windows |
| Electric patio awning with LED lights |
| Slideout cover awnings |
| Exterior entertainment center with LED TV mounted on swivel bracket and CD/DVD/AM/FM radio and speakers |
| Onan® Marquis Gold Genset 5,500-watt generator with auto-gen start |
| 1000-watt inverter |
| 50-amp electrical service |
| 15,000-BTU A/C unit with heat pumps (2) |
| Truma AquaGo® on-demand water heater |
| Solid-surface kitchen countertops with integrated stainless steel sink |
| LED living room TV |
| Day/night roller shades |
| Driver/passenger cockpit table |
| STANDARD EXTERIOR EQUIPMENT |
| High-gloss fiberglass walls |
| One-piece fiberglass roof |
| Entrance door with industry's largest travel-view window |
| One-piece fiberglass front and rear cap |
| Bead-foam insulation (R-24 max roof, R-9 max floor, R-8 max walls) |

| |
|---|
| Electric-powered entrance steps |
| Lockable pass-through storage compartments with easy-to-use Slam-latch™ doors |
| 12V house battery |
| 12V demand water pump |
| Theftford® Sani-Con® Turbo macerator system |
| 120-inch panoramic windshield |

STANDARD INTERIOR EQUIPMENT

| |
|--|
| Soft-touch vinyl ceiling |
| High-intensity, recessed LED ceiling lights |
| Ball-bearing drawer guides |
| 3-burner range with 9,000-BTU SuperBurner™ and piezo igniter |
| Convection microwave oven |
| 12-cubic-foot gas/electric refrigerator |
| Water filtration system |
| Dream Dinette™ mechanism, easily raises/lowers tabletop |
| Seatbelts in all seating positions |
| Soft-touch vinyl dash |
| 31,000-BTU auto-ignition ducted furnace (31UL) |
| 30,000-BTU auto-ignition ducted furnaces (2) (36T) |
| 35,000-BTU auto-ignition ducted furnace (33U, 35S) |
| Prep for satellite dish |
| Cable TV hookup with RG-6 coax and video selector switch |
| Digital antenna with signal booster |
| Shower with surround, glass door, skylight and light |
| Stainless steel lavatory sink |
| Porcelain toilet with foot flush |
| Powered roof vent in bathroom with wall switch |

| |
|---|
| Queen-size bed with under-bed storage (33U, 36T) |
| King-size bed with under-bed storage (29V, 31UL, 35S) |
| 32-inch LED TV in bedroom |
| Bunk beds (300-pound rating) (36T) |
| Decorative kitchen backsplash |
| Entrance door with large frameless window and keyless entry |

STANDARD DRIVING EQUIPMENT

| |
|--|
| Ford® F53 chassis: |
| 6.8L Triton® V-10 320HP gas engine with electronic fuel injection and 460 lb.-ft. torque |
| 6-speed automatic TorqShift® transmission with overdrive and tow-haul mode |
| 130-amp alternator |
| 56-pound, 16.5-gallon propane tank |
| 12V chassis battery |
| Front and rear disc, 4-wheel anti-lock brakes |
| 5,000-pound-rated rear hitch receiver with dual connector |
| 7-pin plug |
| 6-way power, swivel driver and passenger seats |
| Flush-mount LED marker lights |
| Third brake light |

OPTIONS

| |
|---|
| Canadian standards |
| Premium Paint Options: Desert Sky, Moon Bay, Summer Wood |
| Drop-down overhead bunk in cab area with 750-pound capacity |
| Washer/dryer combination (33U, 35S, 36T) |
| Power theater seats (n/a in 33U) |

ALANTE

CUSTOMER VALUE PACKAGE

| |
|---|
| JRide Package: Computer-balanced driveshaft, jounce bumpers, standard front and rear stabilizer bars, SACHS shock absorbers |
| Jayco-exclusive Garmin infotainment system powered by Fusion |
| Backup and sideview cameras |
| Electric patio awning with LED lights |
| Slideout cover awnings |
| LED living room TV |
| Roller shades |
| One-piece fiberglass roof |
| Exterior entertainment center with LED TV mounted on swivel bracket and CD/DVD/AM/FM radio and speakers |
| 1,000-watt inverter |
| Driver/passenger cockpit table |

STANDARD EXTERIOR EQUIPMENT

| |
|--|
| Automatic hydraulic leveling jacks |
| White, high-gloss fiberglass walls |
| One-piece fiberglass front cap |
| Frameless windows |
| Entrance door with industry's largest travel-view window |
| Bead-foam insulation (R-24 max roof, R-9 max floor, R-8 max walls) |
| Electric-powered double entry step |
| Lockable pass-through storage compartments with easy-to-use Slam-latch doors |
| 12V house battery |
| 12V demand water pump |
| 30-amp electrical service cord |
| 4-inch tube bumper with sewer hose storage |

| |
|---|
| Onan Marquis Gold Genset 4,000-watt generator |
| 11,000-BTU A/Cs (2) (n/a on 26X) |
| 15,000-BTU A/C (26X) |
| Energy Management System |
| Outside shower |

STANDARD INTERIOR EQUIPMENT

| |
|---|
| Stainless steel sinks in kitchen and bathroom |
| High-intensity, recessed LED ceiling lights |
| Hardwood cabinet doors throughout |
| Ball-bearing drawer guides |
| 3-burner range with oven, 9,000-BTU SuperBurner and piezo igniter |
| 1.6-cubic-foot microwave |
| 8-cubic-foot gas/electric refrigerator |
| Water filtration system |
| Seatbelts in all seating positions |
| 31,000-BTU auto-ignition ducted furnace |
| Prep for satellite dish |
| Cable TV hookup with RG-6 coax and video selector switch |
| Digital antenna with signal booster |
| Shower with glass door, skylight and light |
| Toilet with foot flush |
| Bathroom powered roof vent with wall switch |
| Bedroom power vent (26X) |
| Full two-toned dash with grey burl accents |
| 6-gallon gas/electric water heater |
| Linoleum flooring |
| Queen-size bed with bedspread |
| Decorative window valance |
| Bunk beds (300-pound rating) (31R) |

STANDARD DRIVING EQUIPMENT

| |
|---|
| Ford F53 chassis: |
| 16,000-pound GVWR (26X) |
| 18,000-pound GVWR (29S, 31P, 31V) |
| 20,500-pound GVWR (31R) |
| 6.8L Triton V-10 320HP gas engine with electronic fuel injection and 460 lb.-ft. torque |
| 6-speed automatic TorqShift transmission with overdrive and tow-haul mode |
| 175-amp alternator |
| 56-pound, 16.5-gallon propane tank |
| 12V chassis battery |
| 19.5-inch Goodyear® radial tires |
| Front and rear disc, 4-wheel anti-lock brakes |
| 5,000-pound-rated rear hitch receiver with dual connector |
| 7-pin plug |
| 6-way power driver seat |
| LED marker lights |
| Third brake light |
| Power front shade |

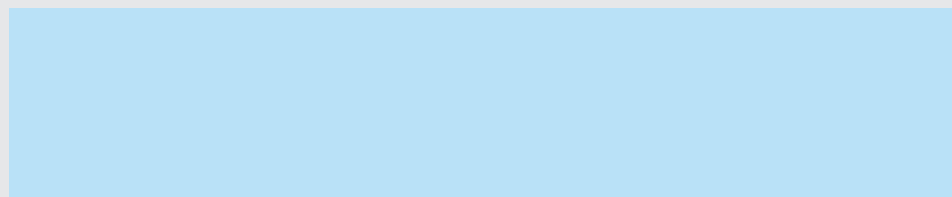
OPTIONS

| |
|---|
| Canadian standards |
| LED TV in bedroom |
| Drop-down overhead bunk in cab area with 750-pound capacity |
| 12-cubic-foot gas/electric refrigerator (29S, 31P, 31R) |
| Theater seats (n/a in 26X, 31R) |



Generations of family fun.

Meet your Jayco Dealer



We work hard—so you can play hard. From finding the perfect Jayco for your family to providing flexible financing options and full-service support, we're here to help.

Follow Jayco



Jayco, Inc. | P.O. Box 460 | Middlebury, IN 46540



See dealer for further information and prices. All information in this brochure and on www.jayco.com is the latest available at the time of publication approval. Jayco reserves the right to make changes and to discontinue models without notice or obligation. Photography may show optional equipment or props used for decoration purposes only. RVs built for sale in Canada may differ to conform to Canadian codes. JAYCO and the JAYCO BIRD IN FLIGHT are registered trademarks of Jayco, Inc. Printed in USA 50K 11/17 ©2017 Jayco, Inc. 274785

Travel with Confidence



At Jayco, we build our RVs to handle every adventure, then back them with our industry-leading 2-year limited warranty. We, with support from our select partners, have you covered for **2 camping seasons or twenty-four thousand (24,000) miles** (mileage limitation applies to motorized products only), whichever occurs first, from the original date of purchase. You won't find a better warranty in the business, because the only strings we attach are those that deliver the ultimate in reliability. That's the Jayco difference. So go explore. We have the warranty that will follow you. For a copy of our 2-year limited warranty with complete terms and conditions, please contact your local Jayco dealer.

FREE

ROADSIDE ASSISTANCE

A year's access to Coach-Net™—the country's largest RV emergency road service.



eco advantage™

Jayco's long-term commitment to generations of family fun

After six years of increased efforts to eliminate waste, conserve energy and increase recycling, we've come a long way in building RVs that are not only better for your family—but also better for the planet.

Learn more at Jayco.com/EcoAdvantage