



SILVERSTAR
LITE



LIGHTWEIGHT TRAVEL TRAILERS

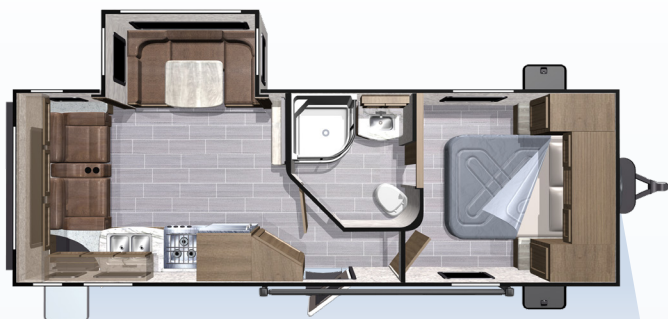


Highland
RIDGE RV

Own the Outdoors

FLOORPLANS

TRAVEL TRAILERS



ST2410RL



ST2802BH



ST2910RL

FEATURES

STANDARDS

- » 100# Full Extension Drawer Guides (Kitchen & Lav)
- » 8 Cu. Ft. Refrigerator
- » LED Lighting in Ceilings
- » Quick Recovery Gas/Electrical Water Heater
- » Residential Return Air A/C
- » Prepped for Observation Camera
- » Key-Alike System
- » Aluminum Tread Entry Steps
- » Power Awning(s) with LED Lighting
- » Stainless Steel Appliances
- » Stainless Steel Under Mount Sinks
- » Outside Enclosed Docking Station
- » Battery Disconnect
- » Solar Prep
- » Convertible Mattress (60" x 80")
- » Seamless Surf(x) Countertops
- » Linoleum Throughout Main Living Areas & Slides
- » Patent Flush Floor Slides with Vinyl Flooring (No Carpet)
- » PVC Roofing Membrane (15 Year Warranty Non-Prorated)
- » Porcelain Toilet

OPTIONS

- » 50 Amp Service with 2nd A/C Prep (2802) (Forced 2910)
- » A/C - 2nd A/C, 13.5k BTU Ducted (must choose 50amp option) (2802, 2910)
- » A/C - Main 15k A/C ipo Std. 13.5k A/C
- » BBQ Grill with Bumper Bracket
- » Bike Rack - LCI Jack-It Front Bike Rack (TT)
- » Power Front and Rear Stabilizer Jacks
- » Table/Chairs ipo Std. Booth
- » Tri-Fold Sofa ipo Std Power Theater Seats (N/A 2910)

SPECIFICATIONS

	ST2410RL	ST2802BH	ST2910RL
Square Feet	222	267	300
UVW	5322	5765	6483
Hitch Weight	502	510	822
GVWR	7400	7450	8600
Cargo (Gross)	2078	1685	2117
Length (Pin to Rear)	28' 5"	31' 9"	33' 5"
Ext. Height	131"	131"	131"
Ext. Width	97"	97"	97"
Ext. Width (Slides Out)	135"	135"	156"
Interior Height (Upper Deck)	-	-	-
Interior Height (Overall)	82"	82"	82"
Fresh Water (Gal.)	51	51	51
Gray Water (Gal.)	29	58	58
Waste Water (Gal.)	29	29	29
LP Capacity (lbs.)	60	60	60
Tire Size	15"	15"	15"
Awning Size	15'	20'	10', 11'

CONSTRUCTION



1 | ROOF

- » Double batten insulation layered with radiant foil
- » Screw-mounted plywood decking topped with premium quality PVC
- » No treatment required! Will not chalk or spot
- » Heat reflecting properties keep coach cooler in the summer

2 | SLIDE OUTS

- » Best in class slide height and depth.
- » Flush floor and above floor slides
- » Accu-Slide cable system with four points of compression
- » Laminate components plus 3M flashing tape along corners to prevent leaks

3 | SIDEWALLS

- » Lightweight, double-welded aluminum walls
- » Slide roof frames laminated with rigid foam insulation

4 | MAIN BODY

- » Class-leading I-beam chassis and draw bars
- » Equa-Flex suspension system
- » Axles with self-adjusting brakes
- » Aluminum wheels with nitrogen-filled tires
- » Industry-leading unique heating system

5 | DOORS & LOCKS

- » Full-width entrance doors with built-in screen doors and integrated window shades
- » Entrance and baggage doors on secure and convenient key-alike system

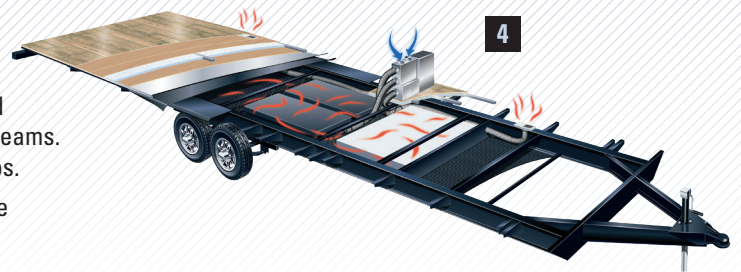
6 | FLOORS

- » Double-welded framed floors
- » Insulated with rigid foam wrapped in radiant foil, anti-puncture Darco material, and strengthened with an overlapping double layer of laminate

INDUSTRY-LEADING HEATING SYSTEM

Oversize 4-inch heat ducts run from the furnace down to the fully enclosed underbelly and wrap around the tanks suspended between the chassis I-beams. Holding tanks are warmed by the forced air heat which prevents freeze-ups.

A return at the end of the tank connecting back into the coach provides the necessary air flow, eliminating the need for a pressurized system.



Your Lite Dealer:



Highland
RIDGE RV

Own the Outdoors

For more information visit us at:
www.HighlandRidgeRV.com