



**FIVE STAR RATING
FOR OVER 15 YEARS**



- *Personal Care*
- *Quality Workmanship*
- *Industry Leading 6 Year Structural Warranty*
- *New Interior LED Lighting and Solar Panel Standard on Every Model*
- *Built for Canadian Winters*

NORTHERN *Lite*

THE HISTORY OF NORTHERN LITE

In 1989, a group of experienced RV builders, working for a major fiberglass truck camper manufacturer saw a niche in the RV market and established Northern Lite Mfg. to design and build a fiberglass truck camper to fit import trucks.

The company evolved and eventually began to produce a complete line of full sized truck campers.

In 1989, two entrepreneurs, Mac Donkin and Lloyd Gartrell, who had sold their successful businesses and decided to retire, each purchased with their wives, a Northern Lite Camper for a once in a lifetime tour across Canada and the US and after that a tour to Alaska.

After spending 7 months on the road traveling, these gentlemen were so

impressed with the quality and workmanship of their Northern Lite Campers that they decided that when they returned home they would invest in this growing company. They felt that if they and their wives were so pleased with these campers, then other buyers would be impressed also.

After 4 years of being investors, Mac and Lloyd decided to buy the rest of the Company.



Putting their business experience to work, and emphasizing the importance of building a quality product, Mac and Lloyd have expanded the Company until today Northern Lite is one of the leading manufacturers and exporters of molded fiberglass truck campers in North America.

Mac Donkin continues to be actively involved in the everyday operation of this successful company.

The excellence of the Northern Lite Camper has been recognized by the RV Consumer Group who in their 2004 RV Rating Book awarded Northern Lite Campers their prestigious 5 Star Rating. This award was particularly gratifying because Northern Lite was the only truck camper manufacturer in North America to receive this honour.

In 2000, Northern Lite doubled the size of their manufacturing facility in Kelowna, B.C. and are now shipping their Truck Campers throughout Canada and into Alaska, Washington, Oregon, California and the other western states, and as far east as New Hampshire.

In February of 2014 the factory burned to the ground. With the support of employees, dealers and friends, a new state-of-the-art factory was built and re-opened for production December 1, 2014.



Northern Lite holds the distinction of producing North America's ONLY campers to achieve a

FIVE STAR RATING

*for over 15 years running in the RV Rating Book as listed by the RV Consumer Group
P.O. Box 520, Quilcene, Washington, 98376
www.rv.org*

What is a 5-Star Rating?

According to the RV Rating Book, "To get a 5-star rating, a brand needs to have an 'excellent' record of performance in Value, Reliability and Highway Control, indicated by ratings of 90 or higher."

One of the factors in the Value rating is depreciation. A high score in this indicates less depreciation on a product over the years.

Reliability is based on used RV appraisals and letters, claims, and commentaries from customers as well as owner satisfaction polls.

Highway Control rating is based on the balance and handling of the product.

Performance also includes the manufacturer's willingness to stand behind their product.



FACTORY TOUR

Northern Lite Campers are built using fiberglass molds in a process similar to building a fiberglass boat.



FIRST CAMPER PRODUCED IN NEW FACTORY



STEP 1

After a layer of Gelcoat is applied to the interior of the mold, a mixture of "chopped" fiberglass strands and a plastic resin is sprayed on top of the Gelcoat to form a very rigid, strong and light weight molded shell.



STEP 2

Once both the top and bottom are pulled out of the molds, the top shell is placed over the bottom shell which has a plywood lip along its top.



STEP 3

The top is screwed onto the bottom shell through this plywood lip. Using a metal molding, a vinyl insert is then used to cover up stainless steel screws.



STEP 4

The camper then proceeds to the assembly line where openings for doors, windows, and exterior compartments are cut out and assembly begins.

FACTORY TOUR



STEP 5

As the camper moves down the assembly line, cupboards, cabinets and appliances are installed and the exterior is completed.



STEP 8

Before it leaves the Northern Lite Factory, each camper is individually weighed and the actual weight is noted inside the camper.



STEP 6

At the Final Inspection station, final finishing is completed and quality and systems checks are carried out.

STEP 9



STEP 7

Air pressure testing is the final test before the camper leaves the assembly line.

The finished camper is now ready to ship to one of our over 30 Authorized Dealers throughout North America.

SPECIAL CONSTRUCTION FEATURES



1

The top shell of the Northern Lite Camper is placed over the bottom shell and overlaps 2" to eliminate any possible chance of leakage.



2

Non rusting stainless steel screws are used to attach the top to the bottom and are also used on the exterior of our campers



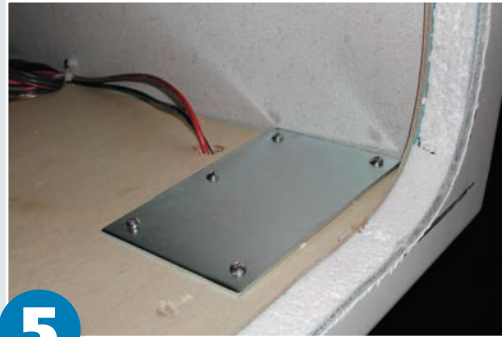
3

A unique aerodynamic roof line gives extra strength to the roof, lessens wind resistance, and eliminates water leaks.



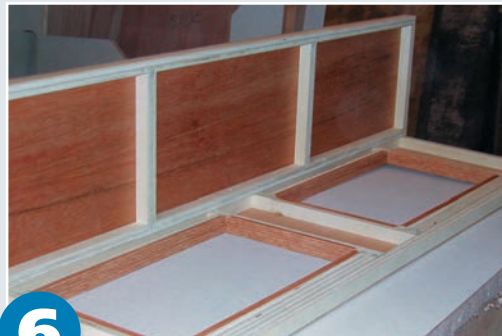
4

Jack brackets curve under the camper for extra support when lifting the camper. The brackets are screwed into 1" plywood backing.



5

Tie downs are welded to a 4"x6" piece of steel and mounted on 1" plywood for extra strength.



6

Cabinets are framed with strips of 3/4" plywood rather than spruce or pine, to get away from warped wood with knots, adding extra strength to cabinets.



7

Drawers are constructed using high quality Russian Birch and all drawer guides are metal roller bearing and full extension.



8

No particle board or chip board anywhere!



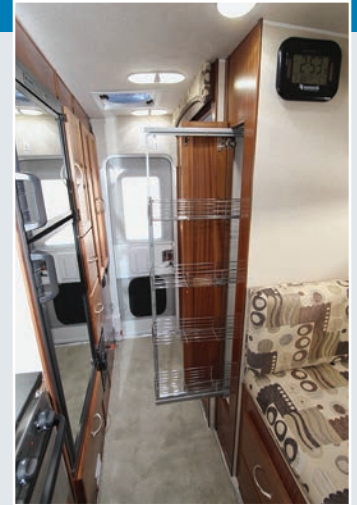
9

All wood paneling is "real wood" sapele veneer, not a paper or vinyl overlay.

10'2" EXCD SPECIAL EDITION



BUMPER PATIO STANDARD ON SPECIAL EDITIONS



Pull Out Pantry

Interior of 10'2 SE showing Dometic Skylight and LCD TV in bunk area and Dometic Acrylic Thermal pane Window in kitchen area.

DISTINCTIVE FEATURES OF THIS SPECIAL EDITION

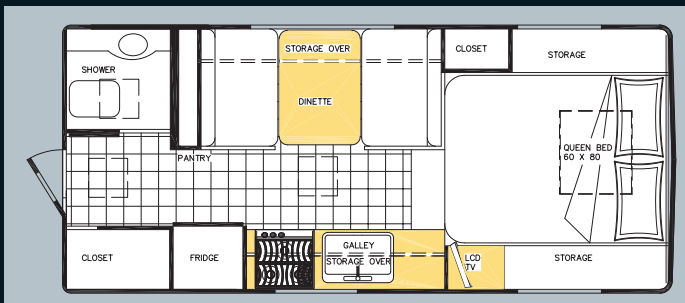
- Upgraded Dometic thermal pane acrylic windows
- 10' Side awning
- Additional battery box
- Battery disconnect switch
- Sliding propane tray
- Rear bumper patio c/w step
- Electric jacks
- Removable carpet
- Stereo CD/DVD player
- LCD television c/w antenna
- Dometic thermal skylight
- Microwave (in cupboard)
- Pull-out pantry
- Privacy drape
- Bedspread
- Roof air conditioner
- Four season heated tanks
- 95 Watt solar panel c/w digital regulator
- Fantastic fan
- Queen size bed (60x80)
- 7' Power rear awning
- LED interior lighting
- 3 Stage battery charger
- Sliding basement tray



Dometic Acrylic Thermal Pane Windows are 50% lighter than conventional Thermal Pane Windows and have a higher R value.



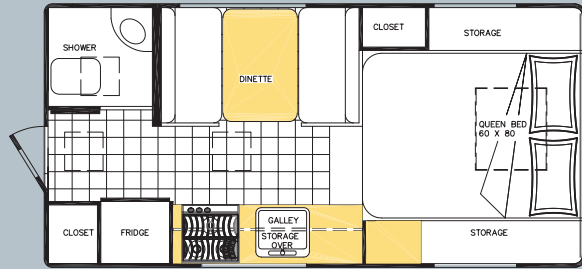
New Basement Tray



9'6" Q CLASSIC SPECIAL EDITION

CLASSIC SPECIAL EDITION FEATURES

- 8' Side Awning
- Wireless Electric Jacks
- Power 7' rear awning
- Removable Carpet
- Heki Thermal Skylite
- LCD TV c/w antenna
- Bumper Patio
- Bedspread
- 5000R Fantastic Fan
- CD DVD Player
- Sapele Hardwood
- LED interior lighting
- Optional U Shape Dinette
- 3 Stage battery charger
- New larger bunk windows
- 95 Watt solar panel c/w regulator
- Four season camper
- Heated tanks



OPTIONAL U-DINETTE SEATING



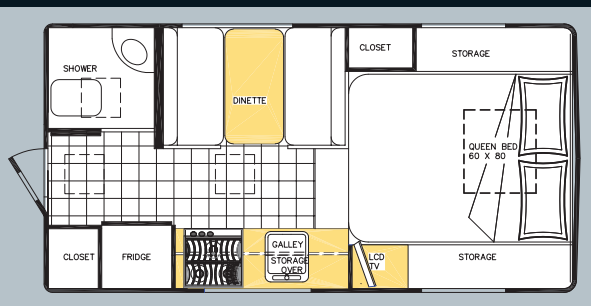
8'11" Q CLASSIC SPECIAL EDITION

STANDARD FEATURES

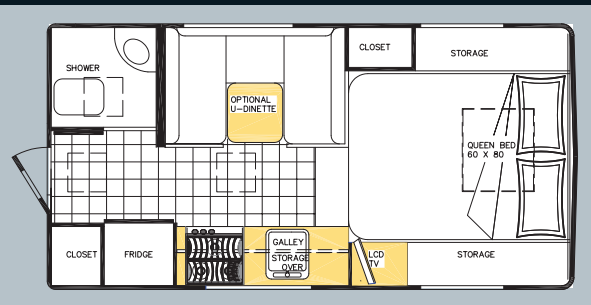
- 8' Side awning
- Wireless electric jacks
- 7' Power rear awning
- Removable carpet
- Heki thermal skylight
- LCD TV c/w digital antenna
- CD/DVD player
- Privacy curtain
- Bumper patio
- Bedspread package
- 5000R Fantastic Fan
- Sapele hardwood
- 95 Watt solar panel c/w regulator
- LED interior lighting
- 3 Stage battery charger
- Optional u-shape dinette
- New larger bunk windows
- Four season camper
- Heated tanks
- Sliding basement tray



With face to face dinette



With optional u-dinette



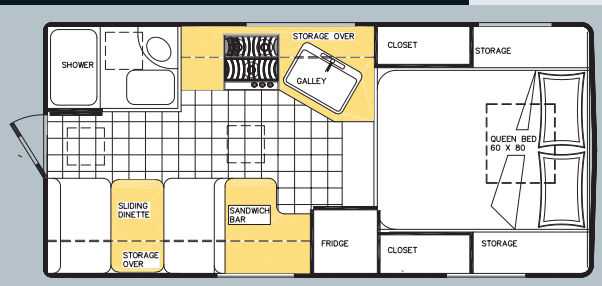
OPTIONAL U-DINETTE SEATING



10'2" EXRR DRY BATH

STANDARD FEATURES

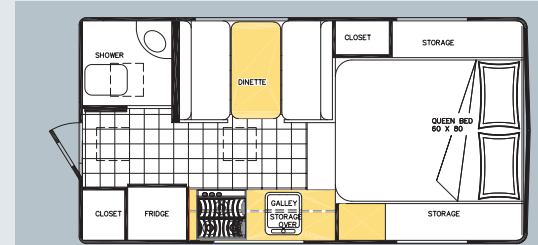
- Heki thermal skylight
- Dometic thermal windows
- 95 Watt solar panel
- LED interior lighting
- Sapele Hardwood
- Separate tub shower
- Bedspread package
- Four season camper
- Large kitchen galley
- Sandwich bar
- Sliding basement storage tray
- Heated tanks



SPORTSMAN EDITION

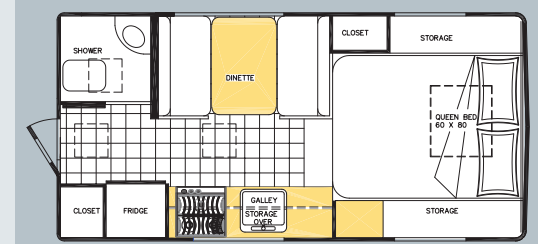


9'6" SPORTSMAN



8'11" Q Sportsman Series

With face to face dinette · Fits full size short box trucks



9'6" Q Sportsman Series

With face to face dinette · Fits full size long box trucks

STANDARD EQUIPMENT

- Battery disconnect switch
- Monitor panel
- Ladder
- Outside shower
- Propane auto changeover
- 12 volt Bathroom vent
- Fits all trucks without lift kit
- 6.3 cu ft 3 way fridge
- 18,000 BTU auto light furnace
- Power range hood
- 3 Burner stove top
- Glass stove top cover
- 2x20lb Propane cylinders
- 45 Amp converter c/w battery charger
- Bathroom c/w shower
- Fresh water toilet c/w holding tank
- Sapele cabinets and trim packages
- Sapele veneer paneling
- LED light package
- Class thermal windows
- 95 Watt solar panel c/w regulator
- Basement tray
- Bedspread package
- Marine headliner
- Screen door
- Heki thermal skylight
- Mechanical jacks – white
- Pre-wire for electric jacks
- Folding assist handle
- Face to face dinette
- Full Queen (60"W x 80"L)
- 10" Heated basement storage
- Hot water heater – DSI
- Heated and insulated tanks
- Sliding propane tray
- Extra large, stainless steel sink
- Extra large (dual) battery box

OPTIONAL EQUIPMENT

- Air conditioner
- 8' Side awning
- 7' Overdoor power awning (factory order only)
- Boat rack
- Factory pickup
- Fantastic fan – 5000R
- Happijac – electric motors (c/w wireless remote)
- Happijac – dually brackets
- LCD TV screen (c/w swing out arm)
- Microwave
- Privacy drape
- Rear bumper step
- Step 6 – 24" heavy duty
- Stereo speakers only (4)
- Stereo CD/DVD player (c/w 4 speakers)
- TV antenna
- U.S. Package
- Rear bumper patio



CAMPER SPECIFICATIONS

	102" Northern Series	102" EX CD SE	102" Dry Bath	102" EX RR	Classic Series	9'6" Q SE	Sportsman	9'6" Q	Classic Series	8'11" Q SE	Sportsman	8'11" Q
Center of gravity (inches)	48	48	42.5	42.5	37.5	37.5						
Overall width (inches)	98	98	98	98	98	98						
Overall length (inches)	218	218	198	198	191	191						
Overall floor length (inches)	131	131	110	110	104	104						
Overall height (inches)	106	100	94	94	94	94						
Interior headroom (feet-inches)	6-8	6-8	6-4	6-4	6-4	6-4						
Dinette bed (inches)	39x75	35x74.5	37x74	37x74	37x67	37x67						
Table size (inches)	29x38	29x34	29x36	29x36	26x36	26x36						
Mattress size (inches)	60x80	60x80	60x80	60x80	60x80	60x80						
Fresh water capacity (US gallons)	42	42	39	39	39	39						
Waste tank (US gallons)	18	18	13	13	13	13						
Gray tank (US gallons)	40	40	24	24	24	24						
Hot water tank (US gallons)	6	6	6	6	6	6						
Propane gas capacity (lbs)	40	40	40	40	40	40						
Approximate dry weight (lbs)	3265	2800	2625	2190	2525	2160						

Water capacity includes hot water tank.

We reserve the right to change specifications without notice of consequence.

All Northern Lite products carry, in addition to the standard manufacturer's one year warranty, an inclusive six year structural integrity warranty.



OPTIONAL BUMPER PATIO



STANDARD STEP

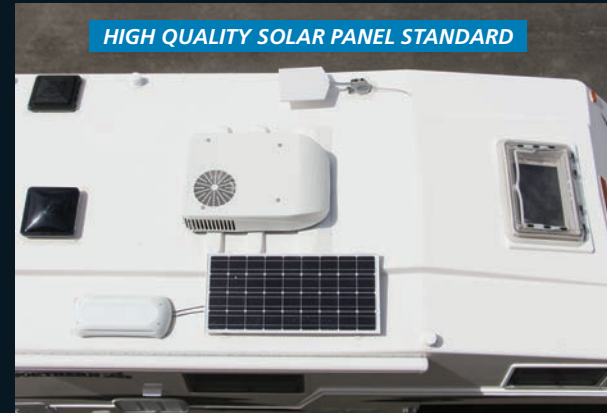


OPTIONAL BOAT RACK

7' POWER REAR AWNING



HIGH QUALITY SOLAR PANEL STANDARD





Northern Lite holds the distinction of
producing North America's
ONLY campers to achieve a

FIVE STAR RATING

for over 15 years running in the RV Rating Book
as listed by the RV Consumer Group
P.O. Box 520, Quilcene, Washington, 98376
www.rv.org



8'11" Q SPECIAL EDITION

9'6" Q SPECIAL EDITION

10'2" EX CD SPECIAL EDITION

Your Authorized Dealer:

**NORTH AMERICA'S LIGHTEST
FOUR SEASON CAMPERS
NOW COME STANDARD
WITH SOLAR PANELS
AND LED LIGHTING**



PRINTED IN CANADA



*Northern Lite reserves the right to make changes to
features and options without notice.*

Northern Lite Mfg. Ltd.
322 Totom Avenue
Kelowna, B.C.
Canada V1X 5W6

Telephone (250) 765-3702
Fax (250) 765-3708
Toll Free 1-800-887-5342

E-mail: info@northern-lite.com
www.northern-lite.com