

ATTITUDE

Toyhaulers



Model 32SAG

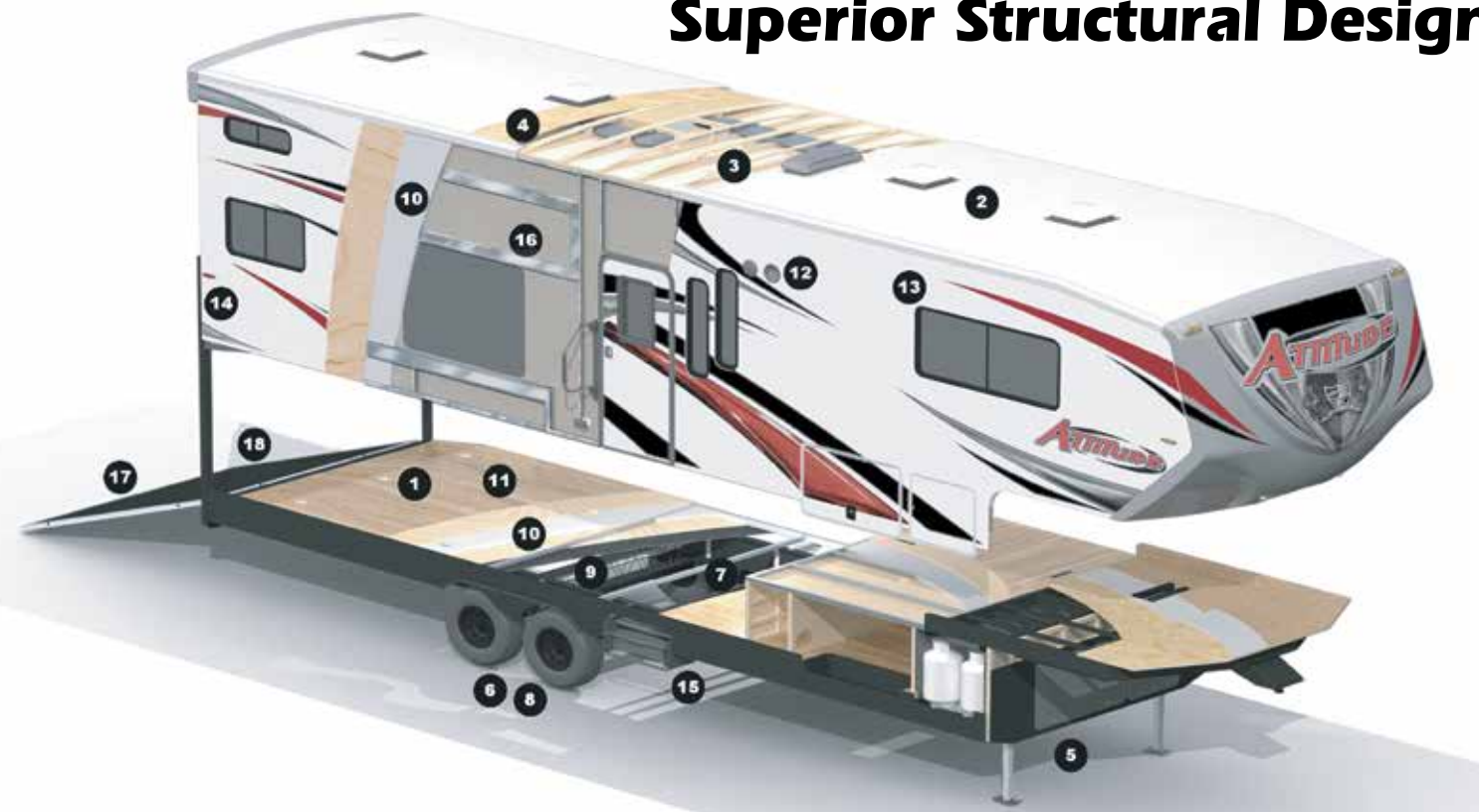
ECLIPSE
RECREATIONAL VEHICLES INC.



*sponsoring the hottest
off-road superstars*



Superior Structural Design

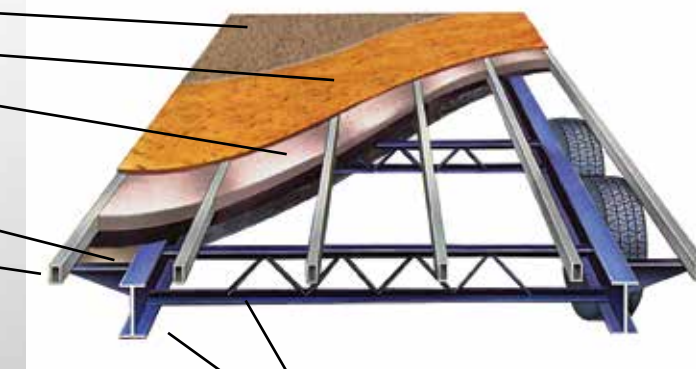


1. 2,500 lbs. Tie-Downs Mounted to Steel
2. Seamless One Piece TPO Roof
3. 5" Roof Trusses
4. Fully Decked Walk-on Roof
5. Wide Stance Chassis
6. Wide Track Axles
7. 12x2" Self Adjust Brakes w/ 7,000 lbs. Stopping Capacity per Axle
8. Tru-Offroad Lubeable Suspension
9. Hi Clearance Offroad Holding Tanks

10. Hi-Density Block Foam - R11 Insulation
11. 2 1/4" Ultra Stong Bonded Floor
12. Hi-Rez LED Flood Lights
13. Extra Large Tinted Windows
14. LED Running Lights
15. Radius Entry Steps
16. Lumber Core Screwed Cabinets with Steel Backing
17. 3,000 lbs. Ramp Door - Rhino Lined
18. Ramp Patio Ready

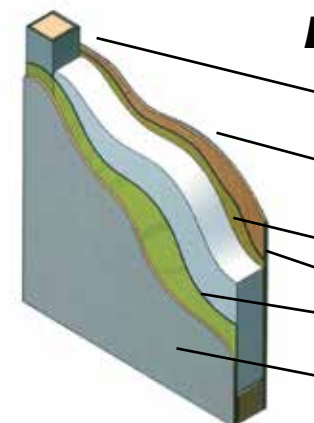
Bonded Floor

- Residential Grade Linoleum
- 1/2" Marine Grade Plywood Decking
- High Density EPS Foam Installation
- Quality Adhesive Developed Specifically for Vacuum Bonded Process
- Lauan Under-Decking Covered w/ Underbelly
- 1.5 x 1.5 Welded Aluminum Tube Framing Filled with Lumber for Better Screw Retention



Heavy Duty Truss Chassis Supports I-Beam Chassis

Bonded Wall



- 1.5 x 1.5 Welded Aluminum Tube Filled with Lumber for Better Screw Retention
- Lamilux Exterior Paneling High Gloss Gel Coated Fiberglass Surface Bonded to Lauan Backing
- High Density EPS Foam Insulation
- Quality Adhesive Developed Specifically for Lamination Process
- Vinyl Covered Lauan

* Bonded Walls and Floors on all Fiberglass Coaches

Limited Edition



19FB



21SA



21SA



19FB

Standard Features - Exterior

- 6,000 LB Axles w/ Zerk Fittings and Self-Adjusting Brakes
- Awning
- Corrugated Thermal Gray Siding
- Decked Walk-on Roof
- Floor - 3" Frame
- Front Laminated Fiberglass
- Fuel Station - 40 Gallon
- HD Digital Antenna w/ Park Cable Hookup
- Hi Def 3M Graphics
- Hi Rez LED Flood Lights
- LP - Dual 20 Lbs w/ LP Cover
- Powder Coated Chassis w/ Double Radius Entry Step
- Propane Stub for Quick Connect
- Ramp Door - 7' Rhino Lined (3,000 Lbs Rating)
- Spare Tire w/ Carrier
- Stabilizer Jacks - Rear
- Steel Wheels - Mod Black 15"
- Tank Capacities - 100 Fresh, 50 Gray, 50 Black
- Windows - Extra Large Tinted

Standard Features - Interior

- 30 AMP Service
- A/C Living Room - 13.5K BTU (Ducted on 21SA-LE)
- Drive-on Wheel Box
- Furnace - 18K BTU (Ducted on 21SA-LE)
- I-Beam Chassis w/ Z-Style Outriggers
- Interior LED Lighting
- Stereo - AM/FM/BT w/ Exterior Speakers
- Lumber Core Screwed Cabinets
- Microwave - Range Hood - Range/Oven
- Mini-Blinds
- Porcelain Toilet
- Rapid Charge Converter
- Refrigerator - Large Double Door
- Skylight Over Shower (21SA-LE Only)
- Single Bowl Galley Sink w/ Pull-out Faucet
- Tie Downs - 2,500 Lbs Rating
- Top Stitch Deluxe Furniture
- Water Heater - 6 Gal DSI (Quick Recovery)

Interior Colors

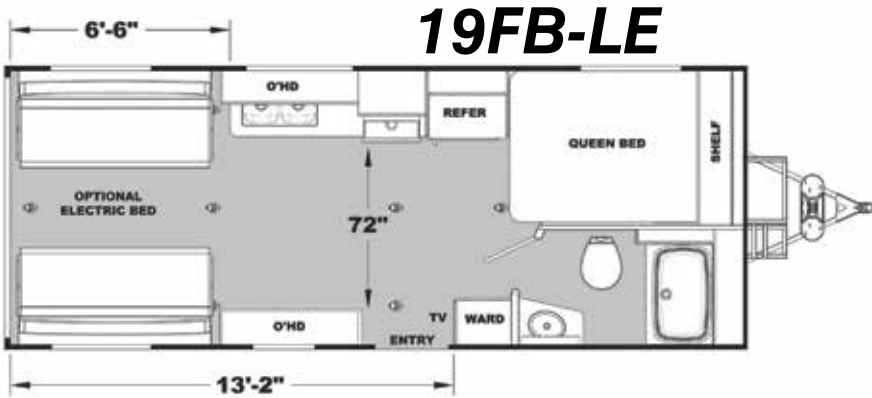
- Zinc (Gray Interior)
- w/ Platinum Birch Wood

Hi Def Exterior Graphics

- Gray

Optional Upgrades

- 2 Chairs IPO Sofa
- CSA Canada
- Electric Bed w/ Ladder
- Generator - 3.5K Portable
- Power Tongue Jack
- Ramp Door Cable Kit
- Solar Panel - 160 Watt
- Stabilizer Jacks - Front
- TV - Living Room (28" Class)
- Winterize



19FB-LE



21SA-LE

Limited Package Includes:

- Electric Awning - DVD - Black Tank Flush
- 12V USB Charger

Attitude

Limited Models:

- 19FB-LE • 21SA-LE



19FB



21SA



21SA

Pro Lite



25FS



25FS



25FS



27SA

Standard Features - Exterior

- 6,000 LB Axles w/ Zerk Fittings and Self-Adjusting Brakes
- Awning
- Corrugated Thermal Gray Siding
- Decked Walk-on Roof
- Exterior Shower
- Floor - 3" Framed
- Front & Rear Laminated Gray Fiberglass
- Fuel Station - 40 Gallon
- HD Digital Antenna w/ Park Cable Hookup
- Hi Def 3M Graphics
- Hi Rez LED Lights - Running, Flood (DS-2, Rear-2)
- Lights - Hitch, Porch, and Step
- LP - Dual 20 Lbs w/ LP Cover
- Powder Coated Chassis w/ Double Radius Entry Step
- Ramp Door - 7' Rhino Lined (3,000 Lbs Rating)
- Ramp Door Cable Kit
- Spare Tire w/ Carrier
- Stabilizer Jacks - Front & Rear
- Steel Wheels - Mod Black 15"
- Swing-away Entry Door Assist Handle
- Tank Capacities - 100 Fresh, 50 Gray, 50 Black w/ Tank Flush
- Windows - Extra Large Tinted

Standard Features - Interior

- 12V USB Charger in Galley Area
- 30 AMP Service
- A/C Living Room - 12.5K BTU Ducted (Not Ducted on 23FB)
- Drive-on Metal Wheel Well (3,000# Rating)
- Electric Bed (2) w/ Ladder (23SA - 1 Bed Only)
- Furnace - 18K BTU Ducted (Not Ducted on 23FB)
- Glass Enclosed Shower (23SA, 27SA Only)
- I-Beam Chassis w/ Z-Style Outriggers
- Stereo - AM/FM/BT w/ Exterior Speakers
- Lumber Core Screwed Cabinets
- Microwave - Range Hood - Range/Oven
- Pillowtop Mattress w/ Bedspread
- Pleated Shades
- Porcelain Toilet
- Rapid Charge Converter
- Refrigerator - Large Double Door
- Solid Surface Galley Top-Drop w/ Glass Cover
- Stainless Steel Galley Sink w/ Pull-out Faucet
- Top Stitch Deluxe Furniture
- Water heater - 6 Gal DSI(Quick Recovery)

Interior Colors

- Zinc (Gray Interior) w/ Platinum Birch Wood

Hi Def Exterior Graphics

- Red, Blue or Gray

Optional Upgrades

- A/C Living Room - 15K BTU
- Aluminum Wheels - Deluxe 15" Black
- Black Aluminum Fender Skirts
- Carpet Kit (Inc w/ Glass Pkg.)
- CSA Canada
- Electric Bed / Dinette (Bottom Bunk) (N/A 23SA)
- Enclosed Tanks - Heated
- Flip - Over Electric Lounge (N/A 23SA) (Inc. w/ Glass Pkg)
- Folding Dinette IPO Sofa (Doorside)
- Folding Roof Door
- Generator - 3.5K Portable (23FB Only)
- Generator - 4.0K Onan w/ Transfer Switch (N/A w/ 3.5 Gen)
- Living Room Slideout - Roadside (27SA Only)
- LP - Dual 30 Lbs
- Power Tongue Jack
- Rear Screen Wall
- Skylight Over Shower (N/A 23FB)
- Solar Panel - 160 Watt
- TV - Living Room (28" Class)
- Winterize

Glass Package (Gray) Includes:

- Fiberglass Sidewalls - Aluminum Framed (Laminated)
- Ultra Strong Bonded Floor
- Flip-Over Electric Lounge (N/A 23SA) - Carpet Kit

Performance Package Includes:

- 2 Chairs IPO Sofa w/ Bay Window - DVD - Medicine Cabinet
- 12V USB Charger in Bedroom - Interior LED Lights w/ Dimmer
- Exterior LED Light Bar - Electric Awning w/ LED Light

Attitude Pro Lite Models:

- 23FB (TT)
- 23SA (TT)
- 25FS (TT)
- 27SA (TT)

23FB



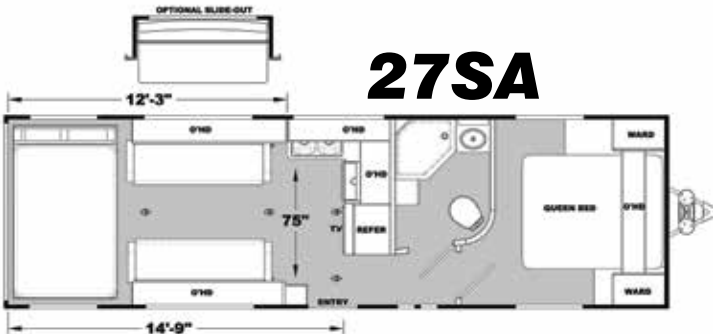
23SA



25FS



27SA



27SA



25FS



281BG

Widelite



Standard Features - Exterior

- 6,000 LB Axles w/ Zerk Fittings and Self-Adjusting Brakes (7,000 LB Axles on 28SAG - 8,000 LB Axles on 32SAG)
- Aluminum Wheels - Deluxe 15" Black (16" G-Rated Tired on 28SAG, 32SAG)
- Black Aluminum Fender Skirts
- Curbside Under Glow LED Lighting
- Decked Walk-on Roof
- Electric Awning w/ LED Light
- Exterior Shower
- Fuel Station - 40 Gallon
- Generator 4.0K Onan w/ Transfer Switch
- Gray Fiberglass Caps - Front (w/ LED)
- Gray Fiberglass Sidewalls - Aluminum Framed (Laminated)
- HD Digital Antenna w/ Park Cable Hookup
- Hi Rez LED Lights - Running, Light Bar, Flood (DS-2, Rear-2)
- Lights - Hitch Step
- LP - Dual 30 Lbs (w/ Custom LP Cover on TT's)
- Powder Coated Chassis w/ Dbl Rad Entry Step (Triple on FW)
- Power Tongue Jack
- Ramp Door - 7' Rhino Lined (3,000 Lbs Rating)
- Ramp Door Cable Kit
- Spare Tir w/ Carrier
- Stabilizer Jacks - 4 (High Clearance) (2-Rear on FW)
- Swing-away Entry Door Assist Handle
- Tank Capacities - 150 Fresh, 50 Gray, 50 Black w/ Tank Flush
- Ultra Strong Bonded Floor

Standard Features - Interior

- 2 Chairs with Bay Window
- 30 AMP Service
- A/C Living Room - 15K BTU Ducted
- Carpet Kit
- Drive-on Metal Wheel Well (3,000# Rating)
- Electric Bed w/ Single Lounge and Ladder
- Furnace - 30K BTU Ducted
- Glass Enclosed Shower
- LED Lights w/ Dimmer
- Lighted Solid Surface Galley Top - Drop Range w/ Glass Cover
- Microwave w/ Built-in Range Hood - Range/Oven
- Pillowtop Mattress w/ Bedspread and Shams
- Pleated Shades
- Refrigerator - Large Double Door
- Skylight Over Shower
- Stainless Steel Galley Sink w/ Pull-out Faucet & Water Filter
- Stereo - AM/FM/CD/DVD/BT w/ App-Controls and Ext Speakers
- TV - Living Room (32" Class) (40" Class on 2814GS)
- (50" Class on 3016GS, 32GSG)
- USB Chargers - 12V (One in Galley & One in Bedroom)
- Water Heater - 6 Gal DSI (Quick Recovery)

Interior Colors

- Zinc (Gray Interior) w/ Platinum Birch Wood

Hi Def Exterior Graphics

- Red, Blue, Gray or Limited Edition Green

Optional Upgrades

- 2nd A/C Bedroom - 13.5K BTU (Req's 5.5 Gen Opt)
- 6-Point Electric Auto Leveling (28SAG, 32SAG Only)
- Alumium Wheels - Deluxe 6" (STD 28iBG, 28SAG, 32SAG; N/A 2814GS, 2016GS, 32GSG)
- Ceiling Fan - 12V
- CSA Canada
- Electric Bed / Dinette (Bottom Bunk)
- Enclosed Tanks - Heated
- Fantastic Fan in Bathroom
- Folding Dinette IPO Chairs (N/A 2814GS, 3016GS, 32GSG)
- Folding Roof Ladder
- Generator - 5.5K Onan w/ App Controls
- Living Room Slideout - Roadside (STD on 2814GS, 3016GS, 32GSG)
- Ramp Patio Fence
- Rear Screen Wall
- Rear Table (N/A 28iBG, 2814GS, 28SAG)
- Refrigerator - XL Double Door
- Roadside Hi Rez LED Flood Lights (2)
- Solar Panel - 160 Watt
- TV - Bedroom (28" Class)
- Wardrobe Slideout
- Water Heater - 10 Gal DSA/Electric
- White Countertops
- Windows - Frameless
- Winterize

Centurion Package Includes:

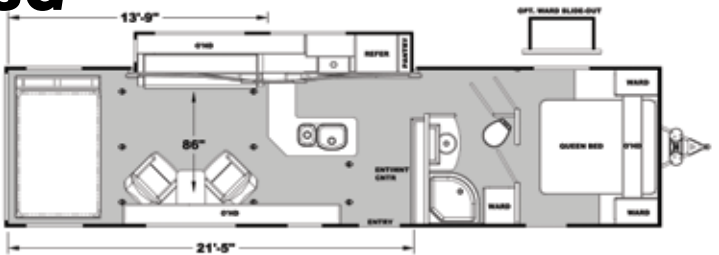
- Solid Surface Lavy Top w/ Glass Bowl & Deluxe Faucet

Attitude

Widelite Models:

- 2814GS (TT)
- 32IBG (TT)
- 28SAG (5W)
- 3016SS (5W)
- 28iBG (TT)
- 32GSG (TT)
- 2814SS (5W)
- 32SAG (5W)
- 3016GS (TT)

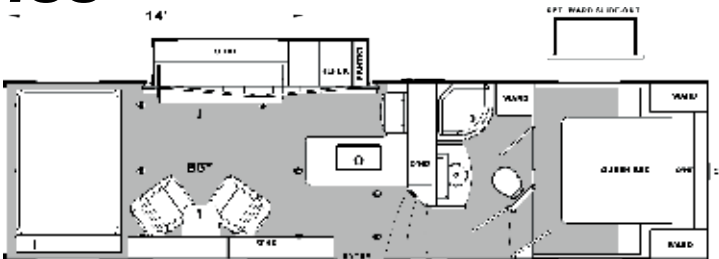
32GSG



28SAG



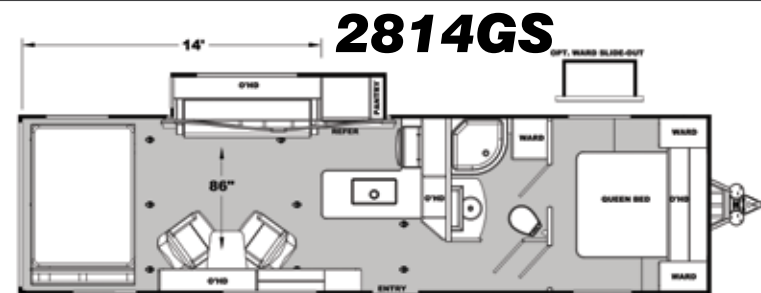
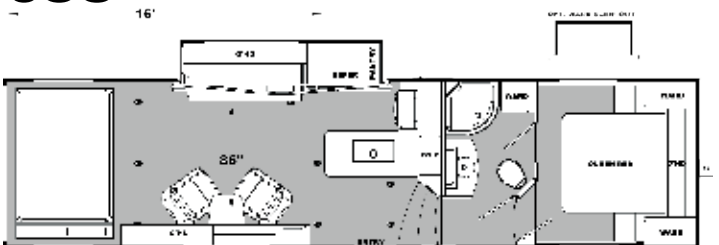
2814SS



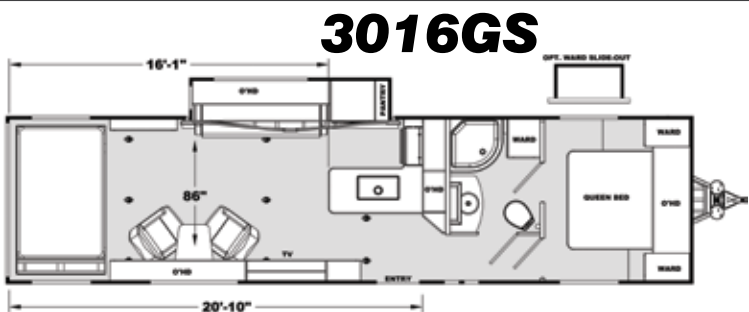
32SAG



3016SS



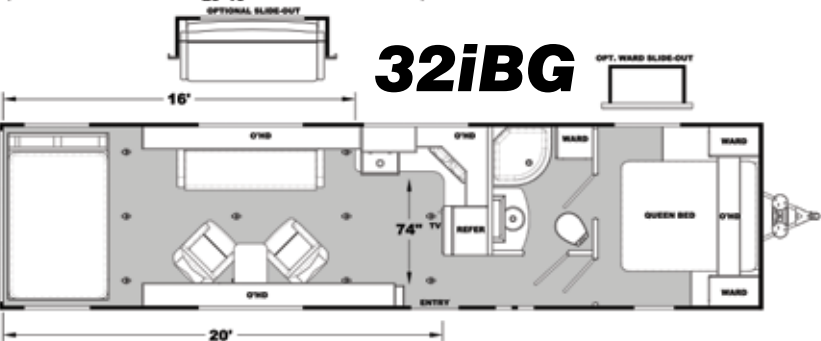
2814GS



3016GS



28iBG



32iBG

Widebody 5th Wheels



35GSG



35GSG



35GSG



35GSG



34CR



King Size Bed

Standard Features - Exterior

- 7,000 LB Axles w/ Zerk Fittings and Self-Adjusting Brakes (8,000 LB Axles on 31CRSG)
- Aluminum Wheels - Deluxe 16" Black w/ G-Rated Tires
- Backup Camera Ready
- Black Aluminum Fender Skirts
- Curbside Under Glow LED Light
- Electric Awning w/ LED Light
- Exterior 40" Class TV w/ Luggage Door (N/A 31CRSG)
- Folding Roof Ladder w/ Decker Walk-on Roof
- Fuel Station - 40 Gallon
- Generator 5.5K Onan w/ Transfer Switch
- Gray Fiberglass Caps - Front (w/ LED) Full Turning Radius 88°
- Gray Fiberglass Sidewalls - Aluminum Framed (Laminated)
- HD Digital Antenna w/ Park Cable Hookup
- Hi Rez LED Lights-Running, Light Bar, Flood (DS-2, RS-2, Rear-2)
- Lights - Hitch and Step
- LP - Dual 30 Lbs
- Powder Coated Chassis w/ Triple Radius Entry Step
- Ramp Door w/ Cables - 7.5' Rhino Lined (3,000 lbs Rating)
- Spare Tire w/ Carrier
- Stabilizer Jacks - Rear (High Clearance)
- Swing-away Entry Door Assist Handle
- Tank capacities - 150 Fresh, 50 Gray, 50 Black w/ Tank Flush
- Ultra Strong Bonded Floor

Standard Feature - Interior

- 2 Chairs w/ Bay Window
- 50 AMP Service
- A/C Living Room - 15K BTU Ducted
- Carpet Kit
- Ceiling Fan - 12V
- Electric Bed w/ Double lounge and Ladder
- Furnace - 30K BTU Ducted
- Glass Enclosed Shower
- In-Floor beaver Tail Storage
- LED Lights w/ Dimmer
- Lighted Solid Surface Galley Top - Drop Range w/ Glass Cover
- Microwave w/ Built-in Range Hood - Range/Oven
- Pillowtop King Mattress w/ Bedspread and Shams
- Pleated Shades
- Refrigerator - Large Double Door (N/A 35GSG)
- Refrigerator - Side-by-Side 4-Door (35GSG Only)
- Stainless Steel Galley Sink w/ Pull-out Faucet & Water Filter
- Stereo - AM/FM/CD/DVD/BT w/ App Controls and Ext Speakers
- TV - Living Room (32" Class) (50" Class on 35GSG)
- USB Chargers - 12V (One in Galley & One in Bedroom)
- Water Heater - 6 Gal DSI (Quick Recovery)

Interior Color

- Zinc (Gray Interior) w/ Platinum Birch Wood

Hi Def Exterior Graphics

- Red, Blue, Gray or Limited Edition Green

Optional Upgrades

- 2 Extra Chairs
- 2nd A/C Bedroom - 12.5K BTU
- 2nd Electric Awning w/ LED Light (35 & 39 Only)
- 6-Point Electric Auto Leveling
- 7.0KW Generator w/ Rear 12.5 A/C (35GSG, 39CRSG Only)
- Central Vacuum System
- CSA Canada
- Electric Bed / Dinette (Bottom Bunk)
- Enclosed Tanks - Heated
- Exterior TV Bracket & Hookups (31CRSG Only)
- Extra 40 Gallon Fuel Tank (25GSG Req's +3 Opt)
- Extra 70 Gallon Fresh Water (N/A 35GSG)
- Extra Cargo - 3' (35GSG Only)
- Fantastic Fan in Bathroom
- Folding Dinette w/ Table (31CRSG, 39CRSG Only)
- Inverter - 1800 Watt
- Kicker Stereo System w/ App Controls
- Lighted Logo Soffit (N/A 31CRSG)
- Living Room Slideout - Roadside (STD on 35GSG)
- Onan Energy Command 30 Auto-Start for Generator
- Ramp Patio Fence
- Rear Screen Wall
- Rear Table (N/A 31CRSG)
- Rear TV Entertainment (50" Class) (35+3 & 39 Only)
- Refrigerator - XL Double Door (N/A 35GSG)
- Solar Panel - 160 Watt
- TV - Bedroom (28" Class)
- Water Heater Heater - 10 Gal DSI/Electric
- White Countertops
- Windows - Frameless
- Windows Thermo Pane
- Winterize
- Wireless Backup Camera

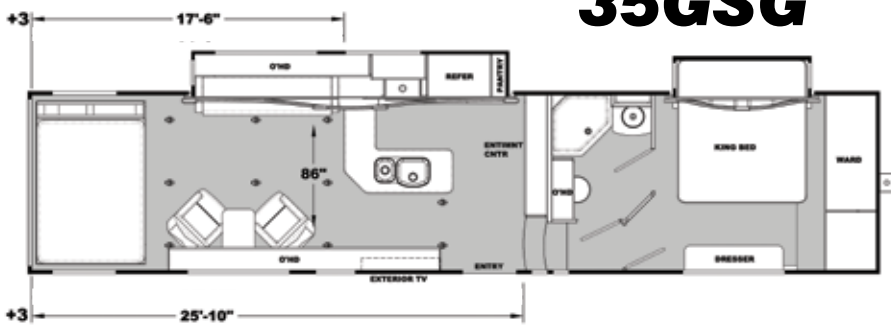
Centurion Package Includes:

- Solid Surface Lavy Top w/ Glass Bowl & Deluxe Faucet

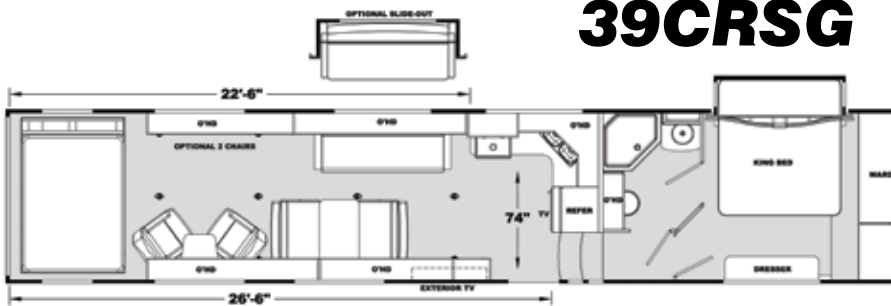
Attitude Widebody 5th Models:

- 31CRSG
- 34CRSG
- 35GSG
- 39CRSG

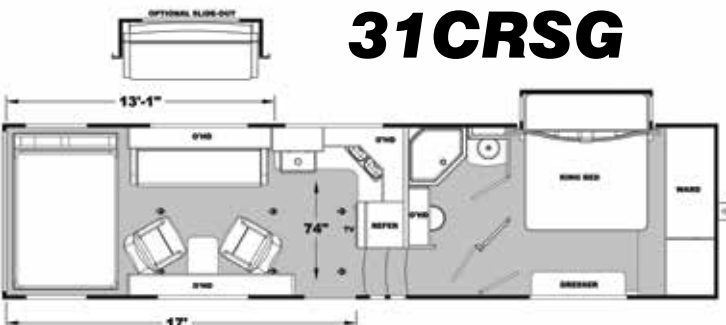
35GSG



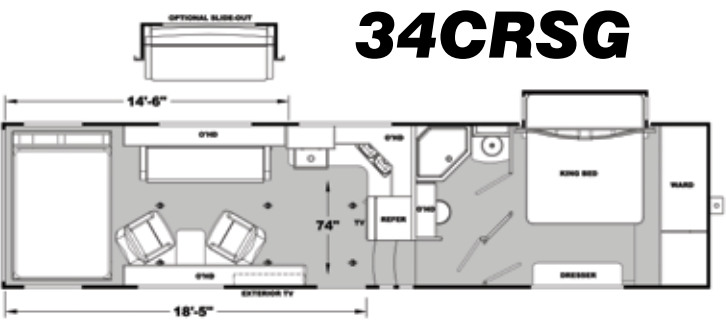
39CRSG



31CRSG



34CRSG



Garage 5th Wheels



36TSG



Elec Bed Dinette



36TSG

Standard Features - Exterior

- 7,000 LB Axles w/ Zerk Fittings and Self-Adjusting Brakes
- 2nd Electric Awning w/ LED Light
- 7.0KW Generator w/ Rear 13.5 A/C
- CSA Canada
- Extra 40 Gallon Fuel Tank
- Extra Cargo - 3' (N/A 39TSG)
- Fantastic Fan in Bathroom
- Fireplace - Electric
- Half Bath w/ Folding Wall
- Inverter - 1800 Watt
- Linc Pad universal Control
- Refrigerator - XL Double Door (2) (39TSG Only)
- Solar Panel - 160 Watt
- TV - Bedroom (28" Class)
- TV - Garage w/ Inside-Outside Bracket (28" Class)
- Washer/Dryer Ready (N/A w/ Half Bath Opt)
- White Countertops
- Windows - Frameless
- Windows - Thermo Pane
- Winterize
- Wireless Backup Camera

Standard Features - Interior

- 50 AMP Service
- A/C Living Rom - 15K BTU Ducted, Bedroom 13.5K BTU
- Carpet Kit
- Ceiling Fan - 12V
- Central Vacuum System
- Electric Bed w/ Flip-Over Double Lounge, Table, and Ladder
- Furnace - 30K BTU Ducted
- Glass Enclosed Shower
- Heavy Duty Flooring in Garage w/ In-Floor Beaver Tail Storage
- Kicker Stereo System w/ App Controls & Outside Speakers
- LED Lights w/ Dimmer
- Lightened Solid Surface Galley Top-Drop Range w/ Glass Cover
- Medicine Cabinet w/ Crown Molding
- Microwave w/ Built-in Range Hood
- Pillowtop King Mattress w/ Bedspread and Shams
- Pleated Shades
- Rear Screen Wall
- Refrigerator - Large Double Door (2 on 39TSG)
- Refrigerator - Side-by-Side 4-Door (36TSG)
- Theater Seating w/ Recliners
- TV - Living Room (50" Class)
- USB Chargers - 12V (One in Galley & One in Bedroom)
- Water Heater - 10 Gal DSI/Electric (Quick Recovery)

Interior Colors

- Zinc (Gray Interior) w/ Platinum Birch Wood

Hi Def Exterior Graphics

- Red, Blue, Gray or Limited Edition Green

Optional Upgrades

- 2 Extra Chairs
- 2nd Electric Awning w/ LED Light
- 7.0KW Generator w/ Rear 13.5 A/C
- CSA Canada
- Extra 40 Gallon Fuel Tank
- Extra Cargo - 3' (N/A 39TSG)
- Fantastic Fan in Bathroom
- Fireplace - Electric
- Half Bath w/ Folding Wall
- Inverter - 1800 Watt
- linc Pad Universal Control
- Refrigerator - XL Double Door (2) (39TSG Only)
- Solar Panel - 160 Watt
- TV - Bedroom (28" Class)
- TV - Garage w/ inside-Outside Bracket (28" Class)
- Washer/Dryer Ready (N/A w/ Half Bath Opt)
- White Countertops
- Windows - Frameless
- Windows Thermo Pane
- Winterize
- Wireless Backup Camera

Centurion Package Includes:

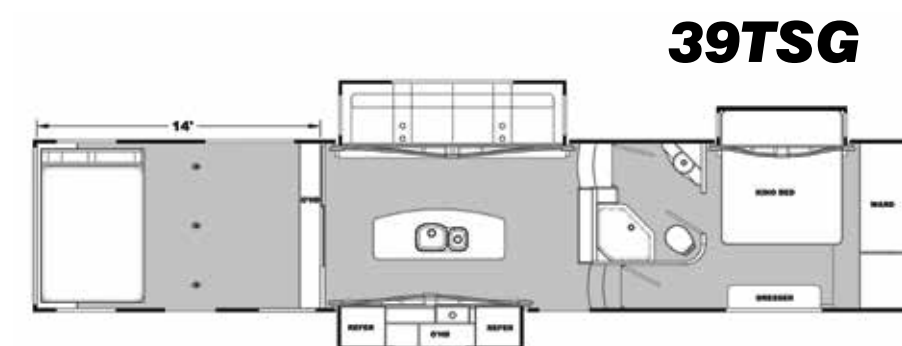
- Solid Surface Lavy Top w/ Glass Bowl & Deluxe Faucet

Power Package Includes:

- 6-Point Electric Auto Leveling
- Onan Energy Command 30 Auto- Start for Generator

Party Package Includes:

- Electric Bed / Dinette - Ramp Door Patio Fence



Attitude Garage 5th Wheels Models:

- 36TSG
- 39TSG

Zinc w/Platinum Birch Wood



Buy Locally



Eclipse Recreation Vehicles Inc. strongly encourages our retail customers to purchase from their local dealership whenever possible.



Blue Graphics

Red Graphics

Grey Graphics

Exterior Graphic Options



32GSG



Ramp Door Patio Fence Option

What is the Hottest Toyhauler?



It's all about ATTITUDE: Attitude offers exceptional innovation, function, and design to meet your expectation for a fun-filled adventure. Whether you play in the dunes with toys, camp in the wild or enjoy the beach, the Attitude is right for you. Eclipse RV built Attitude with you in mind. We offer our customers the ultimate value. Our customers needs and desires were collectively gathered to create the best toyhauler in the industry. We offer choices, whether it be a lightweight 19-foot toyhauler or a 39-plus foot luxurious widebody. We have our customers to thank for our growing success: friends are referring friends!

Limited	GVWR	Dry Weight	Hitch Weight	Axle Weight	Exterior Height	O.A. Length	Fresh Water	Gray Water	Black Water	LP Capacity
19FB-LE	9900	5540	660	4880	11'-8"	26'-1"	100 Gal.	50 Gal.	50 Gal.	40#
21SA-LE	9900	6550	880	5670	11'-8"	28'-10"	100 Gal.	50 Gal.	50 Gal.	40#
Pro-Lite	GVWR	Dry Weight	Hitch Weight	Axle Weight	Exterior Height	O.A. Length	Fresh Water	Gray Water	Black Water	LP Capacity
23FB	9900	6575	720	5855	11'-8"	30'-1"	100 Gal.	50 Gal.	50 Gal.	40#
23SA	9900	6428	913	5515	11'-8"	29'-3"	100 Gal.	50 Gal.	50 Gal.	40#
25FS	9900	7010	1010	6000	11'-8"	31'-8"	100 Gal.	50 Gal.	50 Gal.	40#
27SA	9900	6940	915	6025	11'-8"	32'-9"	100 Gal.	50 Gal.	50 Gal.	40#
Wide Lite	GVWR	Dry Weight	Hitch Weight	Axle Weight	Exterior Height	O.A. Length	Fresh Water	Gray Water	Black Water	LP Capacity
28IBG	12000	7280	1060	6220	11'-10"	34'-4"	150 Gal.	50 Gal.	50 Gal.	60#
2814GS	13000	TBD	TBD	TBD	12'-1"	35'-4"	150 Gal.	50 Gal.	50 Gal.	60#
3016GS	13500	9340	1360	7980	12'-1"	37'-4"	150 Gal.	50 Gal.	50 Gal.	60#
32IBG	13000	8495	1390	7105	11'-10"	37'-4"	150 Gal.	50 Gal.	50 Gal.	60#
32GSG	13500	9390	1470	7920	12'-1"	37'-4"	150 Gal.	50 Gal.	50 Gal.	60#
Wide Lite 5th Wheel	GVWR	Dry Weight	Hitch Weight	Axle Weight	Exterior Height	O.A. Length	Fresh Water	Gray Water	Black Water	LP Capacity
28SAG	14000	8755	2035	6720	12'-11"	31'-9"	150 Gal.	50 Gal.	50 Gal.	60#
2814SS	14000	TBD	TBD	TBD	12'-11"	33'-0"	150 Gal.	50 Gal.	50 Gal.	60#
3016SS	14000	TBD	TBD	TBD	12'-11"	35'-0"	150 Gal.	50 Gal.	50 Gal.	60#
32SAG	14000	9273	2243	7030	12'-11"	35'-9"	150 Gal.	50 Gal.	50 Gal.	60#
Wide Body 5th Wheel	GVWR	Dry Weight	Hitch Weight	Axle Weight	Exterior Height	O.A. Length	Fresh Water	Gray Water	Black Water	LP Capacity
31CRSG	16000	10690	2690	8000	13'-3"	34'-4"	150 Gal.	50 Gal.	50 Gal.	60#
34CRSG	18000	11280	3590	7690	13'-3"	38'-10"	150 Gal.	50 Gal.	50 Gal.	60#
35GSG	18000	12100	3120	8980	13'-3"	38'-10"	150 Gal.	50 Gal.	50 Gal.	60#
35GSG+3	18000	12540	3260	9280	13'-3"	41'-10"	150 Gal.	50 Gal.	50 Gal.	60#
39CRSG	18000	12400	2870	9530	13'-3"	43'-10"	150 Gal.	50 Gal.	50 Gal.	60#
Garage 5th Wheel	GVWR	Dry Weight	Hitch Weight	Axle Weight	Exterior Height	O.A. Length	Fresh Water	Gray Water	Black Water	LP Capacity
36TSG	18000	13360	2560	10800	13'-3"	39'-6"	150 Gal.	40&40 Gal.	50 Gal.	60#
36TSG+3	18000	13528	2883	10645	13'-3"	42'-6"	150 Gal.	40&40 Gal.	50 Gal.	60#
39TSG	18000	13980	3100	10880	13'-3"	42'-10"	150 Gal.	40&40 Gal.	50 Gal.	60#



Grey Graphics with Grey Glass



27SA Corrugated Thermal Grey



All product data, graphics and photography in this brochure were as accurate as possible at press time. Subsequent refinements during the model year may be evident in the actual product. Eclipse RV, Inc. reserves the right to change prices, colors, materials, equipment and specifications without notice - as well as to add, modify or discontinue models shown in promotional materials and / or on it's website. Unloaded vehicle weight and carrying capacities will vary upon optional equipment.

Manufactured by Eclipse Recreational Vehicles, Inc.

3016 Kansas Ave., #14, Riverside, CA 92507

(951) 684-6868

www.EclipseRVMfg.com

