



HOLIDAY RAMBLER®

DREAM LIFESTYLE | FAMILY AMENITIES | FULL-TIME FUN

[www.holidayrambler.com](http://www.holidayrambler.com)

# PRODIGY

2018 HOLIDAY RAMBLER CLASS C DIESEL SPRINTER

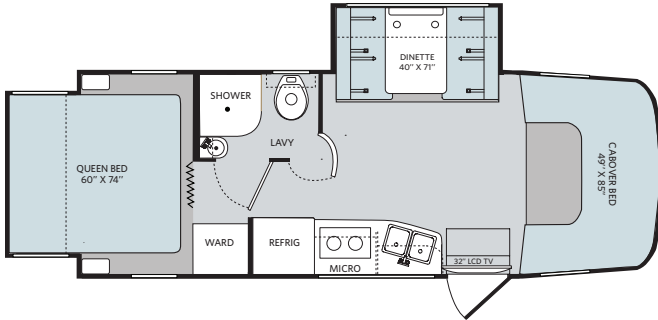


OUR VEHICLES CONNECT AND PROTECT  
PEOPLE AROUND THE WORLD EVERYDAY.  
[www.revgroup.com](http://www.revgroup.com)

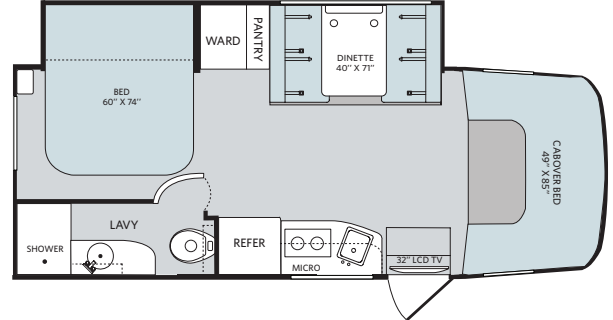


# FLOORPLANS

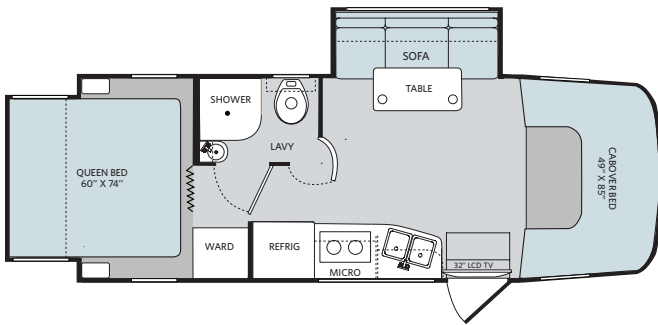
24A



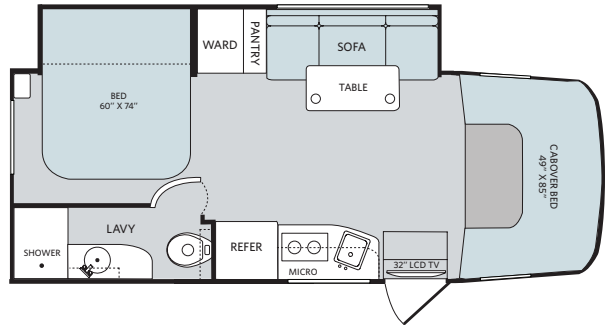
24B



24C



24D



## EXTERIOR



Frost



Cayenne



Odyssey

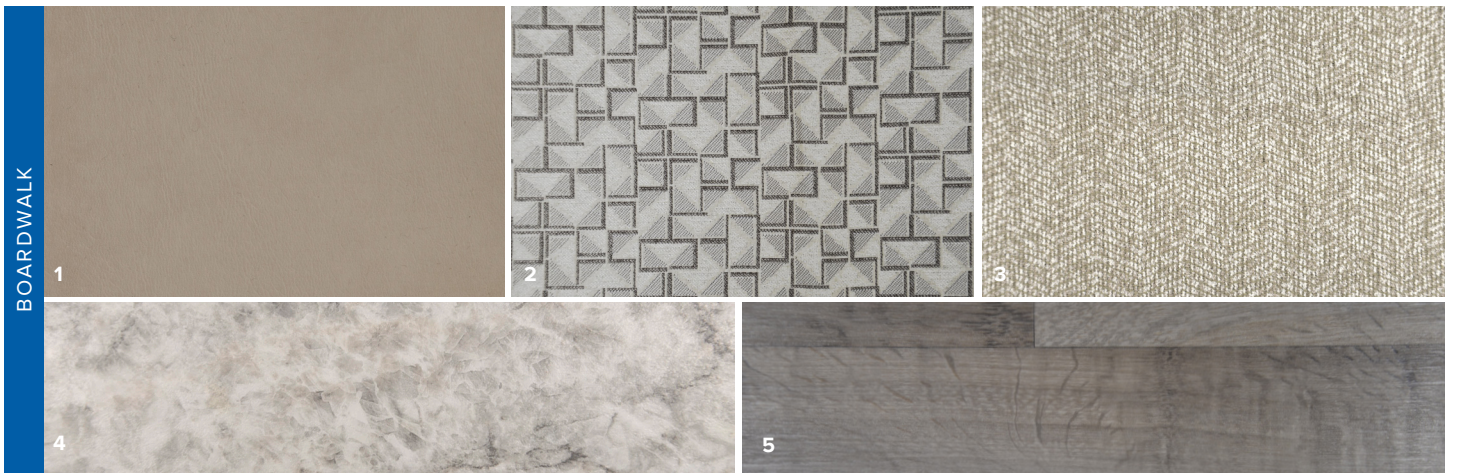


Pacific

**IMPORTANT—PLEASE READ:** Product information, photography and illustrations included in this publication were as accurate as possible at the time of printing. For further product information and changes, please visit our website at [www.holidayrambler.com](http://www.holidayrambler.com) or contact your local Holiday Rambler dealer. Prices, materials, design and specifications are subject to change without notice. All weights, fuel, liquid capacities and dimensions are approximate. Holiday Rambler has designed its recreational vehicles to provide a variety of uses for its customers. Each vehicle features optimal seating, sleeping, storage and fluid capacities. The user is responsible for selecting the proper combination of loads (i.e., occupants, equipment, fluids, cargo, etc.) to ensure that the vehicle's capacities are not exceeded.

©2017 REV Group Inc. Printed in USA. Inventory Control Number 18PRODIGY\_SalesWN18S1, 08/17. Model Year 2018, First Edition.

# DECOR



BOARDWALK

1

2

3

4

5

1 SOFA

2 LIVING ACCENT

3 BED

4 COUNTERTOP

5 FLOORING



PRIMERA WALNUT



WHISPERING WIND HIGH GLOSS

YOUR LOCAL DEALER



HOLIDAY RAMBLER®

## WEIGHTS & MEASURES

MODEL	24A	24B
Wheelbase (inches)	170"	170"
Front GAWR (lbs) <sup>2</sup>	4,410	4,410
Rear GAWR (lbs) <sup>2</sup>	7,720	7,720
GCWR (lbs) <sup>3</sup>	15,250	15,250
GVWR (lbs) <sup>1</sup>	11,030	11,030
Hitch Rating Weight (lbs) <sup>†</sup>	5,000	5,000
Tongue Weight (lbs) <sup>*</sup>	500	500
Fuel Capacity (gal)	26.4	26.4

Model: Mercedes-Benz Sprinter

Engine: 3.0L 6 Cylinder, 188HP, Turbo-Diesel Engine

Transmission: Mercedes-Benz, 5-Speed, Automatic

Alternator: 220 Amp

Torque: 260 lb.-ft. @ 1,400 - 2,400 RPM

Horsepower: 188 HP @ 3,800 RPM

## DIMENSIONS & CAPACITIES

MODEL	24A	24B
Overall Length (inches) <sup>4</sup>	25' 2"	25' 2"
Overall Height (with A/C)	11' 4"	11' 4"
Overall Width (maximum) <sup>5,6</sup>	7' 8"	7' 8"
Interior Height (maximum)	82"	82"
Interior Width (maximum)	88"	88"
Patio Awning Width (feet & inches)	15' 6"	15' 6"
Interior Storage (cu. ft.)	24	24
Exterior Storage (cu. ft.)	42	40
Fresh Water Holding Tank (gal)	29	29
Grey Water Holding Tank (gal)	33	33
Black Water Holding Tank (gal)	33	33
Appliance Propane Tank (gal) (WC) <sup>7</sup>	13	13
Water Heater Tank (gal)	6	6



Holiday Rambler is part of REV Recreation Group, a division of REV Group, Inc., a family of 29 industry-leading motor vehicle brands. At REV Group, we innovate, design and build products that connect and protect thousands of people every day—our trusted vehicles are engineered with the utmost rigor and precision to deliver the highest levels of performance, reliability, durability and safety.

### DISCLAIMER

1. GVWR (Gross Vehicle Weight Rating) is the maximum permissible weight of this fully loaded motorhome. The GVWR is equal to or greater than the sum of the (UVW) unloaded vehicle weight plus the (OCCC) occupant cargo-carrying capacity\*.

2. GAWR (Gross Axle Weight Rating) is the maximum permissible loaded weight a specific axle is designed to carry.

3. GCWR (Gross Combined Weight Rating) is the value specified by the motorhome manufacturer as the maximum allowable loaded weight of this motorhome with its towed vehicle. Towing and braking capacities may be different. Refer to Holiday Rambler and chassis manufacturer's manuals for complete information.

4. Length measured from front bumper to rear bumper (excludes accessories).

5. Excludes safety equipment and awnings.

6. Motorhomes feature a body width over 96" which will restrict your access to certain roads. Before purchasing, you should research any state and/or province road laws which may affect your usage.

7. Tank manufacturer's listed water capacity (WC). Actual propane capacity is 80% of water listing as required by the safety code.

\* The chassis manufacturer recommends the installation of a supplemental brake control system to activate the brakes on the vehicle or trailer you are towing. Hitch receiver ratings expressed are maximum for the hitch receiver installed and may require the purchase of additional equipment that is dependent on the weight of the towed load. Consult with hitch receiver manufacturer for further information.

\*\* UVW and OCCC are found on the label containing the federal certification tag in each RV.

†† The Minimum Towable Load of this vehicle is the available weight capacity, up to GCWR, when the coach is fully loaded to maximum GVWR. However, if the coach is loaded to something less than maximum GVWR, that extra available weight capacity can be added to your Towable Load. For example, if your coach is loaded to 1000lbs less than maximum GVWR, your Towable Load increases accordingly. Do not exceed the hitch rating weight, GVWR or GCWR.

\*\* Seatbelts and locations are shown in the brochure for display purposes only. Actual numbers and locations will vary by model.

\*\*\* All 2017 REV Recreation Group motorhomes include a limited one-year/15,000-mile coach warranty and three-year/45,000-mile structural warranty, whichever occurs first, and is fully transferable for the first 12 months.

### CONTACT US

To locate a dealer near you, visit our website at [www.holidayrambler.com](http://www.holidayrambler.com) or call 1-877-252-4666. We can also be contacted at Holiday Rambler Customer Relations, P.O. Box 1007, Decatur, IN 46733.

**IMPORTANT—PLEASE READ:** Product information, photography and illustrations included in this publication were as accurate as possible at the time of printing. For further product information and changes, please visit our website at [www.holidayrambler.com](http://www.holidayrambler.com) or contact your local Holiday Rambler dealer. Prices, materials, design and specifications are subject to change without notice. All weights, fuel, liquid capacities and dimensions are approximate. Holiday Rambler has designed its recreational vehicles to provide a variety of uses for customers. Each vehicle features optimal seating, sleeping, storage and fluid capacities. The user is responsible for selecting the proper combination of loads (i.e., occupants, equipment, fluids, cargo, etc.) to ensure that the vehicle's capacities are not exceeded.

[www.holidayrambler.com](http://www.holidayrambler.com)

©2017 REV Group, Inc. Printed in the USA. Inventory Control Number RENO18B1, 08/17. Model Year 2018, First Edition.