

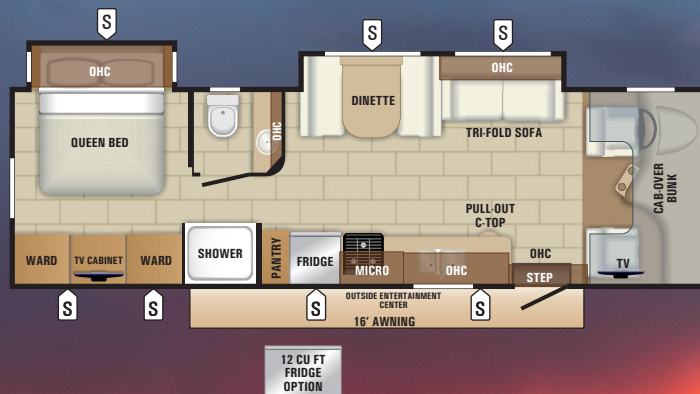


2018 ENTEGRA ESTEEM

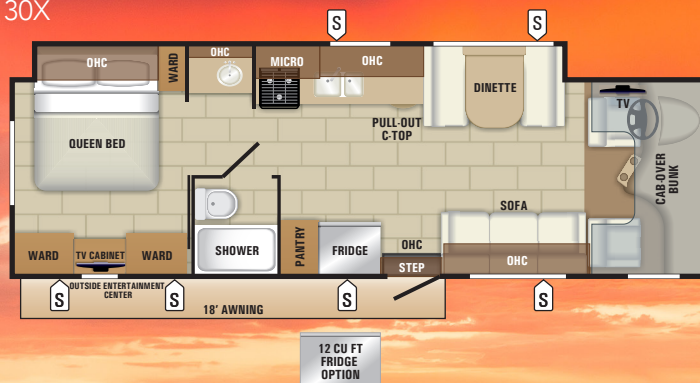
PRODUCT HIGHLIGHTS

- One-piece Seamless Front Cap w/ 30" x 82" Automotive-Bonded Window
- Hellwig® Helper Springs
- Bilstein Shocks
- Heavy-Duty Stabilizer Bar
- 1,000 watt Inverter
- Frameless Windows
- One-Piece Fiberglass Roof
- Stainless Exterior Trim
- Slam-Latch Baggage Doors
- 2-year Warranty

29V



30X



31L



2018 ENTEGRA ESTEEM STANDARDS



CHASSIS

Ride and Handling Package: Computer-balanced driveshaft, Hellwig® helper springs, rubber isolation mounts, Bilstein shocks, Heavy-Duty stabilizer bar
Automatic hydraulic leveling jacks
Ford E-450 chassis- 14,500-pound GVWR, 22,000-pound GCWR
Triton 6.8L EFI V-10 305HP engine w/420 lb-ft torque
6-speed automatic TorqShift series transmission w/ overdrive
7,500-pound hitch w/750-lb tongue capacity & 7-pin plug
55-gallon fuel tank
120-amp alternator
Auxiliary start switch
Power anti-lock brakes w/power steering
Dash A/C
Cruise control
Tilt steering wheel
6-way power driver seat
Driver & passenger air bags
Power windows & door locks
Third brake light
Wheel liners

EXTERIOR EQUIPMENT

TuffShell vacuum-bonded, laminated floor, sidewalls & roof
Bead-foam insulation (R-24 max roof, R-9 max floor, R-5 max walls)
White fiberglass exterior w/ vinyl graphics
Seamless, molded front fiberglass cap with 30"x82" automotive-bonded panoramic front window
Fiberglass running boards
Frameless windows
12V electric awning w/LED lights
One-piece fiberglass roof
Chrome, remote-controlled, heated sideview mirrors
Keyless entry door, touchpad lock system
Electric-powered entrance steps
High-output marine grade exterior speakers
Locking exterior storage compartments
Onan® 4,000-watt MicroQuiet generator w/ auto-changeover
House battery on slideout tray
Illuminated battery disconnect switch
12V electrical system w/120V, 60-amp power converter
1,000-watt inverter
32" exterior TV
30-amp power cord
120V GFCI-protected exterior receptacle
56-pound propane tank
Heated holding tanks (12V pads)
4-inch bumper-tube w/sewer hose storage
Black tank sprayer
Outside shower
LED taillights

INTERIOR EQUIPMENT

Atwood® 6-gallon gas/electric DSI auto-ignition water heater
84-inch ceiling height w/ padded vinyl ceiling
High-intensity, recessed LED ceiling lights
Sienna Maple cabinetry w/ shaker style doors
Side-hinged, hidden-hinge overhead doors
Satin nickel hardware
Ball-bearing drawer guides
Hardwood fascia
12V demand water pump
Water filtration system
Dream Dinette™
Vinyl flooring throughout
Interior command center
15,000-BTU A/C w/ heat pump
31,000-BTU auto-ignition furnace w/ wall thermostat
32" LED TV
Cable TV hookup w/ RG-6 coax
Satellite dish prep
Day/night roller shades

CAB

Sony® infotainment system
Backup & sideview cameras
Full cab-over bunk (750-pound rating)
Custom dash applique

KITCHEN

Recessed stainless steel Atwood® 3-burner range w/ 9,000-BTU SuperBurner™ and solid-surface covers
Oven
8-cubic-foot, flush-mount, double door refrigerator with stainless steel finish
Solid-surface countertop w/ matching sink covers
Recessed stainless steel sink

BATHROOM

Recessed stainless steel sink
Shower w/ decorative surround
Skylight in shower
Toilet w/ foot flush

BEDROOM

24" LED TV in bedroom
Queen-size bed w/ bedspread
Fan-Tastic Fan
Light in wardrobe

OPTIONS

(2) 24" LED TV's in Bunk Area (31L only)
12 cu.ft. refrigerator (29V & 30X only)
Aluminum rims
Full-body paint (comes equipped w/ slideout covers)



Entegra Coach, Inc., P.O. Box 460, Middlebury, IN 46540, www.entegracoach.com. See dealer for further information and prices. All information in this brochure is the latest available at the time of publication approval. Entegra Coach reserves the right to make changes and to discontinue models without notice or obligation. Photos in this brochure may show optional equipment and props for photography purposes. RVs built for sale in Canada may differ to conform to Canadian codes. ©2018 Entegra Coach, Inc., Entegra Esteem flyer 2018.indd EJ 9-17 Printed in U.S.A.



Carefree Paint Package

Floorplan	Exterior Length	Exterior Width	Exterior Height w/AC	Interior Height	Wheel Base	Fresh Water Capacity (gal.) (includes water heater)	Grey Waste Water Capacity (gal.)	Black Waste Water Capacity (gal.)
29V	32' 6"	100"	11' 6"	84"	223"	53	41	32
30X	32' 6"	100"	11' 6"	84"	223"	53	41	31
31L	32' 6"	100"	11' 6"	84"	223"	53	41	32

It is important for your safety and enjoyment that you are aware of the weights and tow ratings of the RV you select. Consult a competent advisor for questions or advice. Whether you are new to RVing or a veteran, get a feel for the performance of your RV before heading out on the roadways. When you tow a vehicle with your RV, you must drive differently than when you drive a single vehicle. Practice hooking up, driving, backing up and braking in a safe environment or seek out professional instruction. Jayco affixes a weight label to each RV which lists weight information for that vehicle. Refer to that label to verify the vehicle will meet your requirements. See specifications chart above.

Gross Vehicle Weight Rating (GVWR): The maximum permissible weight of the motorhome, including the Unloaded Vehicle Weight (UUV) plus passengers, personal items, all cargo, fluids, options and dealer-installed accessories. The GVWR is equal to or greater than the sum of the UUV and the Cargo Carrying Capacity.
Gross Combined Weight Rating (GCWR): The maximum allowable combined weight of the motorhome used as a tow vehicle and the attached towed vehicle.