

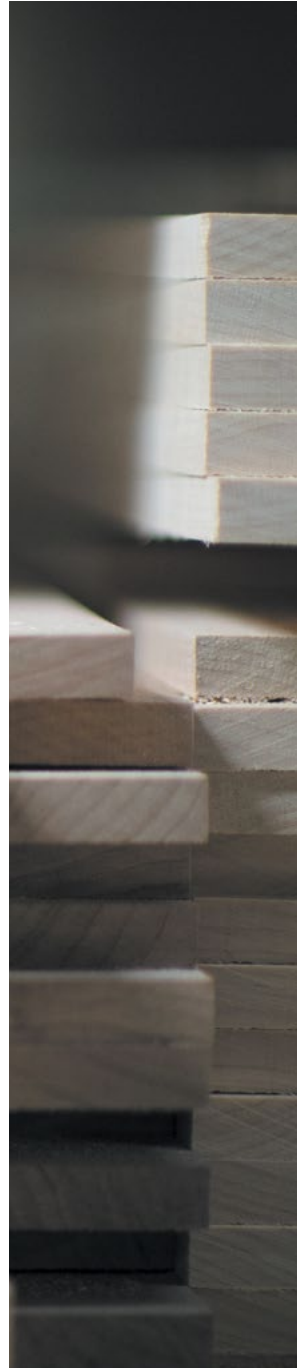


# BAY SPORT

# STAR/ SPORT



50 YEARS HAVE TAUGHT US...  
QUALITY RESULTS TAKE QUALITY TIME.



LEADING THE WAY  
**FORWARD**

At Newmar, our first 50 years have taught us that the brightest futures are realized by those willing to blaze a new trail. Lead rather than follow. And reject cookie-cutter imitation in favor of cutting-edge innovation. That's why we are committed to spending the next half century creating handcrafted motor coaches that go above and beyond their batch-built competition. Coaches designed and engineered to help you live the RV lifestyle to the absolute fullest. Join us, and discover the Newmar difference for yourself.

Matt Miller, President







Full-paint Masterpiece™ Finish | Mustang Exterior | Floor Plan 3307

## THE OPEN ROAD IS CALLING

Redesigned for 2018, Bay Star Sport combines unexpected extras with unmatched Newmar quality, the result of a 10-day assembly, paint, and inspection process. Inside, an all-new instrument panel houses a USB outlet, JBL® cockpit audio, and a rearview monitor with sound. There's even an available Rand McNally® navigation system and a stowable passenger workstation.

**The industry's best**

Mustang full-paint Masterpiece™ finish, frameless windows

**Tried and true**

Ford® F-53 chassis with a 320-HP V10 engine



# WHERE EVERYONE BELONGS

From a Vizio® LED TV to the pair of optional Wi-Fi solutions, family-friendly accommodations are everywhere inside the Bay Star Sport. Select floor plans can be had with a dropdown bunk bed and either a Hide-A-Bed or Fold-N-Tumble sofa, while floor plan 3307 is available with both a dinette booth and a Flexsteel® couch that transforms into a set of bunk beds in seconds.

#### **Welcome home**

Floor plan 3307 with Mustang décor, travertine-patterned vinyl flooring

#### **Enjoy together**

Available dinette booth



Mustang Décor with Astoria Glazed Maple Cabinetry | Floor Plan 3307





## HELP YOURSELF TO MORE

Decorated by a mosaic backsplash with chrome accents, the kitchen is where you will find everything you need to eat well away from home, like a three-burner cooktop with oven, an over-the-range microwave, and a Dometic® refrigerator. A solid-surface countertop surrounds the stainless steel double-bowl sink, while floor plan 3307 adds an extra storage pantry.

**Made in Nappanee**

Astoria glazed maple cabinetry with concealed hinges

**It's your choice**

New Calypso wood finish also available (not shown)





## YOUR PRIVATE ESCAPE

Opt for the available LED TV and DVD player and take in the latest Hollywood blockbusters from inside of a bedroom that can be shielded from the rest of the cabin using a uniquely engineered pocket door. A large rear window is included with select floor plans, and a backlit fascia covers each slideout. Over in the master bath, a solid-surface wood vanity provides plenty of storage.

### **Rest easy**

Queen bed with quilted bedspread and accent pillow

### **Feel restored**

36" x 30" shower with skylight and power vent







## MADE FOR MAKING MEMORIES

Donning all-new front and rear caps with concealed hinges, a Carefree of Colorado® power side awning, and DuraShield™ front cap paint protection, the 2018 Bay Star Sport looks good in the great outdoors. And it's a breeze to drive, thanks to an independent front suspension, Bilstein™ shock absorbers, cruise control, and available side-view cameras.

### **Quiet power**

Standard Cummins®  
Onan generator

### **The little things**

Lit exterior storage,  
automatic entrance-door steps





# EXTERIOR & INTERIOR DÉCOR



## MUSTANG EXTERIOR

*Awning Color: Linen Tweed*



## PALOMINO EXTERIOR

*Awning Color: Charcoal Tweed*



## MUSTANG INTERIOR

*a. Furniture/ Fabric b. Carpet c. Counter Top*

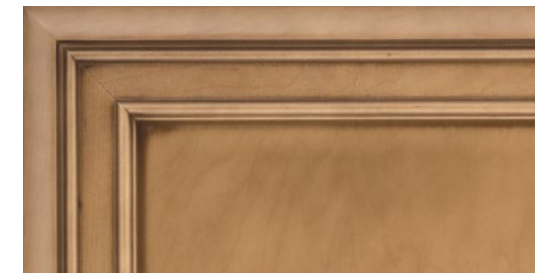


## PALOMINO INTERIOR

*a. Furniture/ Fabric b. Carpet c. Counter Top*



## ASTORIA GLAZED MAPLE

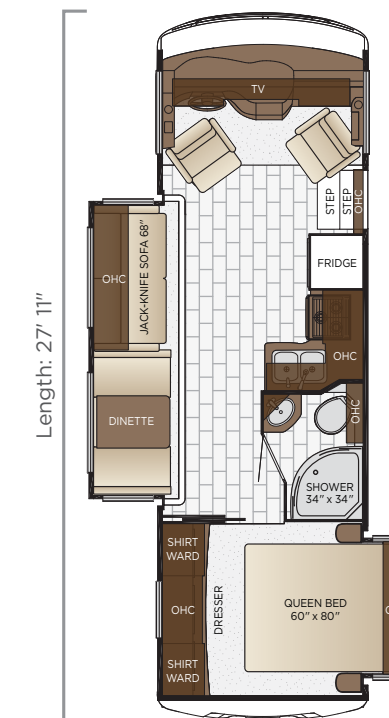


## SIENNA GLAZED MAPLE



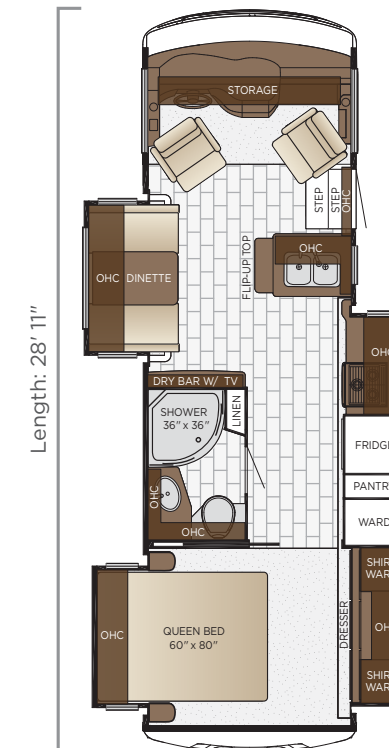
## CALYPSO GLAZED MAPLE

# BAY STAR SPORT FLOOR PLANS



## 2702

Length	27'11"
Width	101.5"
App. Overall Height	12'04"
Interior Width	95.5"
Interior Height	80"
Grey Tank	60 gal.
Sewage Tank	40 gal.
Water Tank	75 gal.
Propane Tank	25 gal.
Furnace	30,000 btu

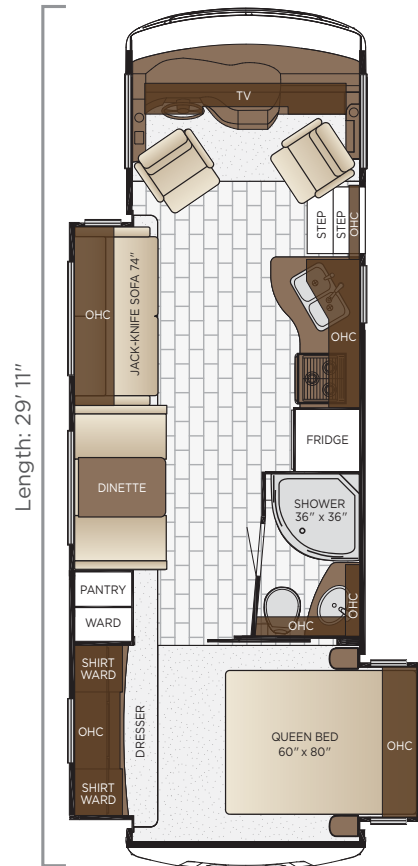


## 2812

Length	28'11"
Width	101.5"
App. Overall Height	12'04"
Interior Width	95.5"
Interior Height	80"
Grey Tank	60 gal.
Sewage Tank	40 gal.
Water Tank	75 gal.
Propane Tank	25 gal.
Furnace	30,000 btu

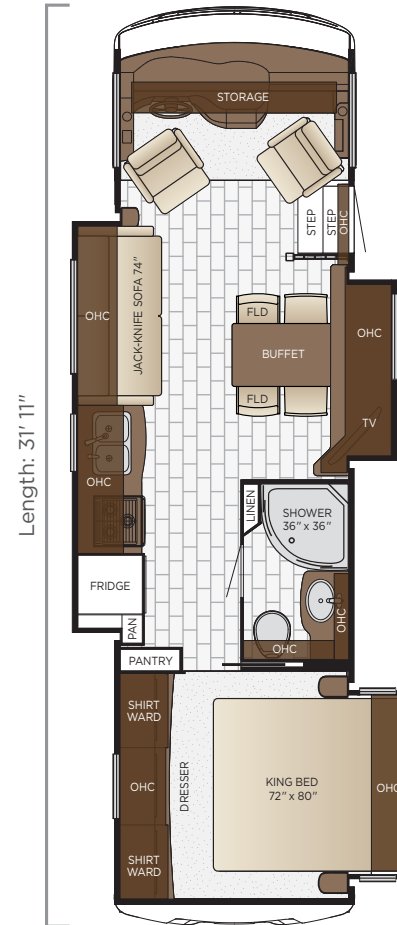


# BAY STAR SPORT



## 2903

Length	29'11"
Width	101.5"
App. Overall Height	12'04"
Interior Width	95.5"
Interior Height	80"
Grey Tank	60 gal.
Sewage Tank	40 gal.
Water Tank	75 gal.
Propane Tank	25 gal.
Furnace	30,000 btu

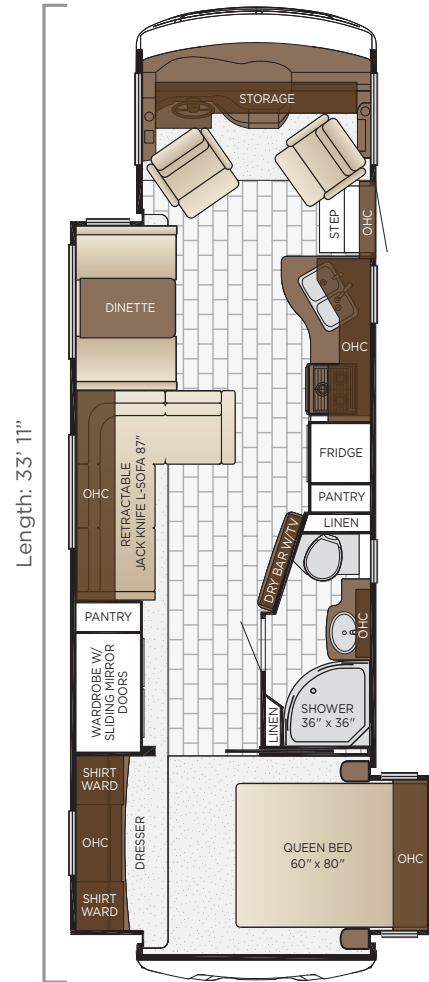


## 3113

Length	31'11"
Width	101.5"
App. Overall Height	12'04"
Interior Width	95.5"
Interior Height	80"
Grey Tank	60 gal.
Sewage Tank	40 gal.
Water Tank	75 gal.
Propane Tank	25 gal.
Furnace	30,000 btu

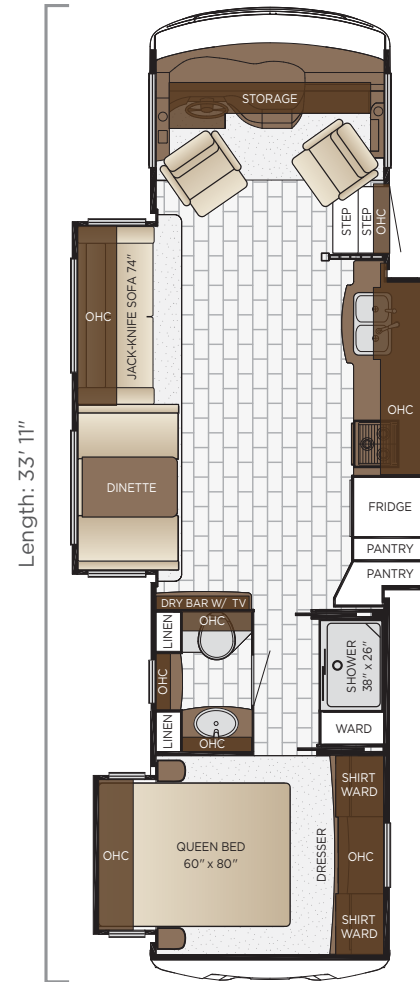


# FLOOR PLANS



## 3307

Length	33'11"
Width	101.5"
App. Overall Height	12'04"
Interior Width	95.5"
Interior Height	80"
Grey Tank	60 gal.
Sewage Tank	40 gal.
Water Tank	75 gal.
Propane Tank	25 gal.
Furnace	35,000 btu



## 3312

Length	33'11"
Width	101.5"
App. Overall Height	12'04"
Interior Width	95.5"
Interior Height	80"
Grey Tank	60 gal.
Sewage Tank	40 gal.
Water Tank	75 gal.
Propane Tank	25 gal.
Furnace	35,000 btu



## EXTERIOR FEATURES

Exterior Masterpiece Full Painted Graphics with Clearcoat Finish

DuraShield™ Protection on Front Cap

Lighted Exterior Storage Compartments

Automatic Step for Entrance Door

Convex Exterior Mirrors

Rear Hitch for Towing Car

Assist Handle at Entrance Door

Undercoating

Mud Flaps

### OPTIONS

Convex Exterior Mirrors with Defrost and Remote Control

Hydraulic Leveling Jacks

Rear Ladder

Flag Pole Bracket

Temporary Windshield Protection for Transport Only

## CONSTRUCTION FEATURES

BriteTEK™ Roof with Walkable Deck

Gelcoated Fiberglass Exterior Sidewalls, Front & Rear Caps

Aluminum-Frame Sidewalls & Roof Construction, 16" on center

5/8" Foam Insulation Laminated in Sidewalls & Ceiling

## WINDOWS, AWNINGS & VENTS

One Piece Tinted Windshield

Frameless Single Pane Tinted Safety-Glass Windows

Power Vent in Bathroom

Skylight Above Shower

Carefree Travel'r Side Awning

### OPTIONS

Slideout Covers

Frameless Double-Pane Tinted Safety Glass Windows

Rear Window in Bedroom

Power Vent in Kitchen

## CHASSIS FEATURES

Ford® F-53 Chassis 18,000 lb. on 27' Floor Plans

Ford® F-53 Chassis 20,500 lb. on 28'-33' Floor Plans

Cruise Control

Tilt Steering Wheel

Stainless Steel Wheel Simulators

## AIR CONDITIONING & HEATING

13.5M Brisk® Central Air Conditioner

Dash Heater and Air Conditioner

Propane Gas Furnace with Ducted Heat

### OPTIONS

15.0M Penguin™ Heat Pump Central Air Conditioner

Driver & Passenger Overhead Dash Fans

Two 13.5 Penguin Heat Pump A/C, 5.5 Onan Generator, 50 Amp Electrical Service with Energy Management System\*

## ELECTRICAL FEATURES

4.0 kW Cummins Onan® Generator with Remote Switch and Automatic Changeover

30 Amp Electrical Service with Flexible Cord and Automatic Transfer Switch

Two 12 Volt House Batteries

Manual Battery Disconnect Switch for House Battery

12 Volt Auxiliary Receptacle on Dashboard

45 Amp Converter

Daytime Running Lights

Emergency Engine Start Switch

LED Interior Lighting

Manually Operated Hold-To-Run Slideout Switch

Cable TV Connection

USB Outlet at Dash for Driver Use

### OPTIONS

1000 Watt Inverter Run to TVs\*



## PLUMBING & BATH FEATURES

Demand Water System

Sewage Holding-Tank Rinse

Water Heater Bypass System

Dometic® 310 China Bowl Stool

ABS Shower Surround with Shower Door

Systems Monitor Panel

## INTERIOR FEATURES

Vinyl Ceiling Panels

Pleated Window Shades

Decorative Wall Art

Mini Blinds in Kitchen and Bathroom Windows

Vinyl Floor in Kitchen, Living Area and Bathroom

Carpeting in Bedroom and on Slideout Floors

Interior Assist Handle at Main Entrance Door

Quilted Bedspread and Accent Pillow

Inlaid Six Panel Design Interior Passenger Doors

Auto Motion Power Shade at Windshield & Manual Shades at Driver & Passenger Side Windows

Dash Panel Color Coordinated ABS

10 Bc Fire Extinguisher, Smoke Detector, Propane and Carbon Monoxide Detector

## CABINETS & FURNITURE

Calypso Glazed Maple Mitered Designer Cabinet Doors- Matte Finish

Concealed Hinges on Cabinet Doors

Drawers with Full Extension Guides

Polished Solid Surface Countertop in Kitchen with Stainless Steel Sink

Solid Surface Countertops in Bathroom and Bedroom

Flexsteel® Delux Leather Sofa and Front Seats

Passenger Seat Work Station

Lifts on Bed Top

Smooth-Top Mattress

### OPTIONS

Astoria Glazed Maple Mitered Designer Cabinets-Opt. Matte Finish

Sienna Glazed Maple Mitered Designer Cabinets-Opt. Matte Finish

Drop Down Bunk Bed Over Driver/Passenger Seats with Electric Release Latches\*

Plush Pillow Top Mattress

Folding Cockpit Table

Side Folding Hide-A-Bed Sofa 87\*\*

74" Fold-N-Tumble with Air Mattress

84" Jackknife Sofa in Place of 84" Jackknife L-Sofa\*

87" Bunk Sofa\*

Buffet Dinette

Combo Buffet Dinette, Two Fixed/Two Folding Chairs

68" Jackknife Sofa with Removable Table 2812 Only

## APPLIANCES

Three-Burner Range with Oven

Range Hood with Light and Fan

Microwave

Dometic® 6 Cf. Refrigerator with Wood Paneling Front

6 gal. Gas Water Heater with Direct Spark Ignition

### OPTIONS

Norcold 12 Cf. 4-Door Refrigerator with Icemaker\*

## AUDIO, VIDEO & ACCESSORIES

LED TV in Living Area (TV Sizes Vary per Floor Plan)

Dash Radio/CD Player with Harman/JBL 180 Watt Sound System

Rearview Colored Monitor System with Audio

Winegard Digital TV Antenna

TV Jack and 110 Volt Recept in Door Side Exterior Storage Compartment

Satellite Dish Prep on Roof

### OPTIONS

32" LED TV in Bedroom

DVD Player with Coax Switcher

Side View Cameras Displayed onto Rearview Monitor Screen

WiFiRanger Skypro Pack Router

Winegard Cellular In Motion WiFi

Xite Dash Radio, 6" Monitor with Rand McNally Navigation

Winegard Cellular in Motion WiFi Prep

**\*Check with dealership on floor plan availability.**

**The content in our literature depicts and describes products that are subject to change. For the most recent images and information, please visit [NewmarCorp.com](http://NewmarCorp.com).**





Full-paint Masterpiece™ Finish | Whitecap Exterior | Floor Plan 3414

LIVE THE DREAM  
**YOUR WAY**

With ten versatile floor plans, the all-new 2018 Bay Star is adored by those who love choice. Want a full bath-and-a-half? Choose 3403. Bringing the whole crew? 3124, 3401, and 3414 can all be had with a couch that turns into bunk beds. Bay Star is even available with an outdoor kitchen fitted with a refrigerator, sink, and storage cabinets when you select 3009, 3414, 3518, or 3532.

**Dazzling color**

Whitecap full-paint Masterpiece™ finish

**Added vision**

Convex side mirrors with defrost, optional side-view cameras



PURPOSE-BUILT  
**TO PLEASE**

The 2018 Bay Star offers an available Bose® Solo 5 soundbar and two separate in-coach Wi-Fi solutions. Two-tone Ultralux captain's chairs feature a passenger footrest and workstation, and floor plan 3414 includes an 87" Flexsteel® sofa, a retractable 48" Sony® LED TV with DVD player, and opposing slideouts that extend to create an especially spacious galley.

**Room to roam**

Floor plan 3414 with  
Whitecap décor

**Great looks**

Backlit slideout fascia,  
optional vinyl tile



Whitecap Décor with Calypso Glazed Maple Cabinetry | Floor Plan 3414





## MORE OF WHAT YOU CRAVE

Floor plan 3414 makes your dream of having a luxurious L-shaped kitchen a reality, while adding an available free-standing Hide-a-Leaf dinette. And every Bay Star lets you explore your culinary creativity using a polished solid-surface countertop, double-bowl stainless steel sink, and an upgraded Whirlpool® over-the-range microwave. Wood cabinetry can even be dressed in a new Calypso finish, as shown.

### **Tasteful details**

New octagon-shaped mosaic backsplash

### **Keep it fresh**

Standard wood-paneled Norcold® refrigerator







## RELISH TOTAL SERENITY

Covered by a designer bedspread, scarf, and accent pillow, the Bay Star master suite features a queen bed that rests between two solid-surface nightstands, providing an ideal view of a second Sony® LED TV with DVD or optional Blu-ray player. What's more, select floor plans come equipped with a 40" x 26" sliding-door shower.

**Settle right in**

Queen bed with wood-bound headboard

**Be rejuvenated**

Available twin-sink vanity







ARRIVE. UNWIND.  
**REPEAT.**

Whatever the forecast, a Dometic® Weather Pro power side awning has you covered, while a quiet Cummins® Onan generator delivers reliable power on demand. Watch your favorites fireside with the available exterior-mounted Sony® LED TV, and, in the morning, easily load your belongings behind a set of side-hinged baggage doors. Up front, a modern new instrument panel houses a JBL® cockpit audio system and an available six-inch monitor with Rand McNally® navigation.

**See clearly**

Fully bonded windshield with defrost feature

**Strong roots**

Ford® F-53 chassis, new front and rear caps



## EXTERIOR & INTERIOR DÉCOR



**INTRIGUE EXTERIOR**

*Awning Color: Charcoal Tweed*



**WHITECAP EXTERIOR**

*Awning Color: Charcoal Tweed*



**INTRIGUE INTERIOR**

*a. Furniture/ Fabric b. Carpet c. Counter Top*



**WHITECAP INTERIOR**

*a. Furniture/ Fabric b. Carpet c. Counter Top*

## LUXURY VINYL PLANK FLOORING



**ASTORIA GLAZED  
MAPLE FLOORING**



**SIENNA GLAZED  
MAPLE FLOORING**



**CALYPSO GLAZED  
MAPLE FLOORING**



**ASTORIA GLAZED MAPLE**



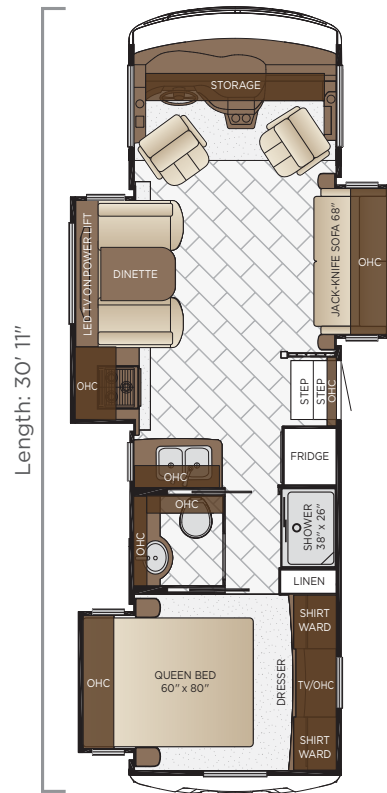
**SIENNA GLAZED MAPLE**



**CALYPSO GLAZED MAPLE**

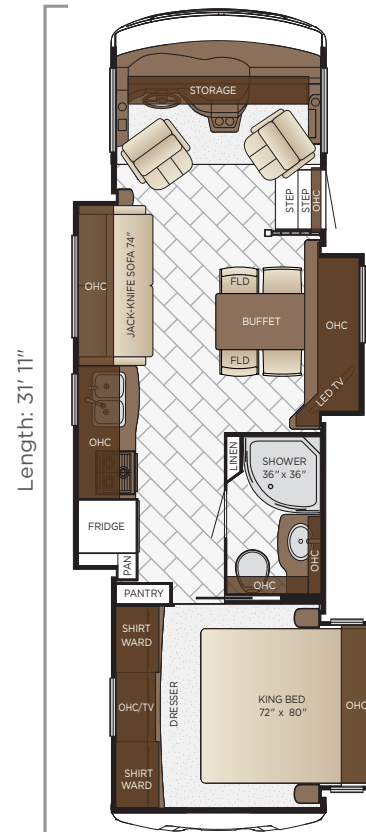


# BAY STAR



## 3009

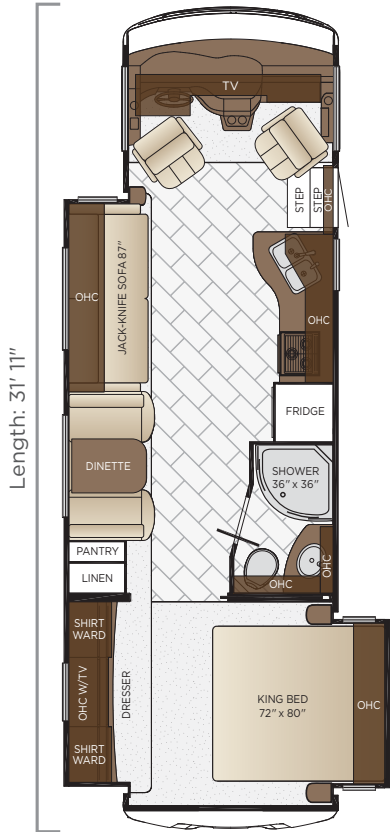
Length	30'11"
Width	101.5"
App. Overall Height	12'08"
Interior Width	95.5"
Interior Height	80"
Grey Tank	60 gal.
Sewage Tank	40 gal.
Water Tank	75 gal.
Propane Tank	25 gal.
Furnace	40,000 btu



## 3113

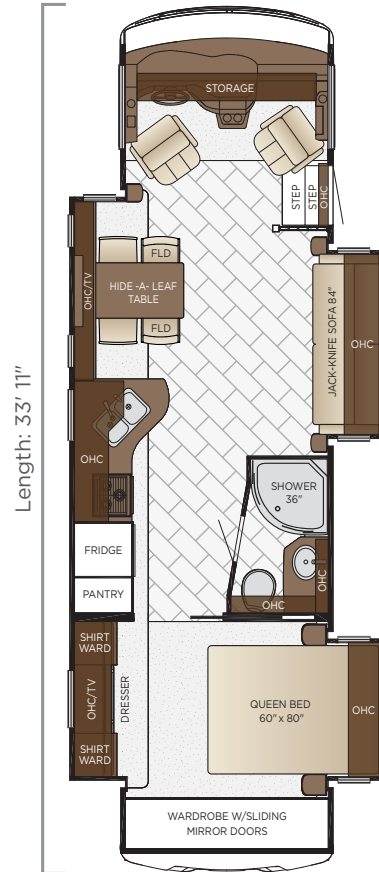
Length	31'11"
Width	101.5"
App. Overall Height	12'08"
Interior Width	95.5"
Interior Height	80"
Grey Tank	60 gal.
Sewage Tank	40 gal.
Water Tank	75 gal.
Propane Tank	25 gal.
Furnace	40,000 btu

# FLOOR PLANS



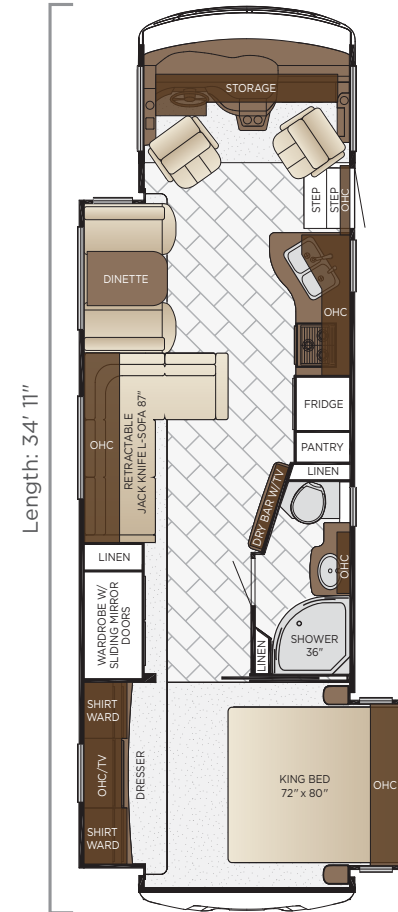
## 3124

Length	31'11"
Width	101.5"
App. Overall Height	12'08"
Interior Width	95.5"
Interior Height	80"
Grey Tank	60 gal.
Sewage Tank	40 gal.
Water Tank	75 gal.
Propane Tank	25 gal.
Furnace	40,000 btu



## 3333

Length	33'11"
Width	101.5"
App. Overall Height	12'08"
Interior Width	95.5"
Interior Height	80"
Grey Tank	60 gal.
Sewage Tank	40 gal.
Water Tank	75 gal.
Propane Tank	25 gal.
Furnace	40,000 btu



## 3401

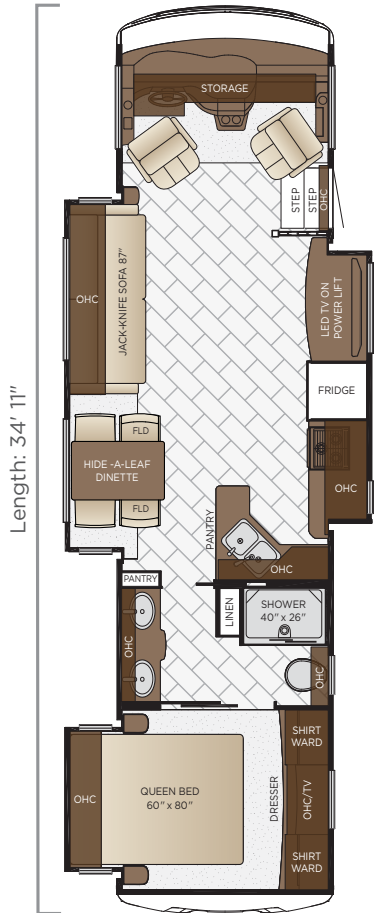
Length	34'11"
Width	101.5"
App. Overall Height	12'08"
Interior Width	95.5"
Interior Height	80"
Grey Tank	60 gal.
Sewage Tank	40 gal.
Water Tank	75 gal.
Propane Tank	25 gal.
Furnace	40,000 btu



# BAY STAR



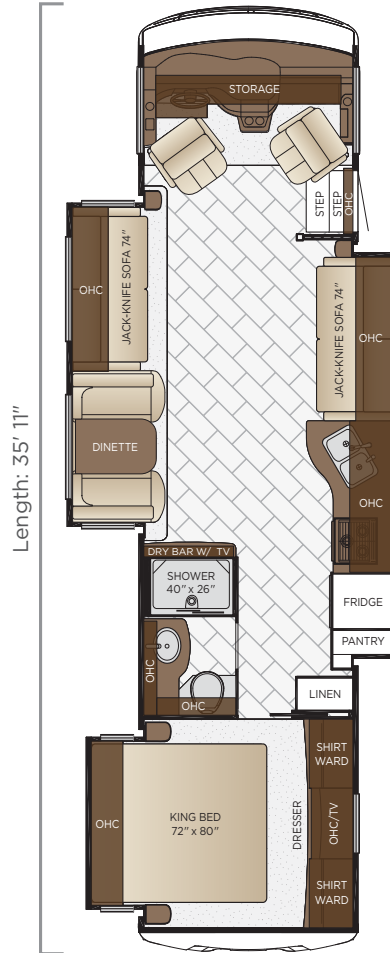
# FLOOR PLANS



Length: 34' 11"

## 3414

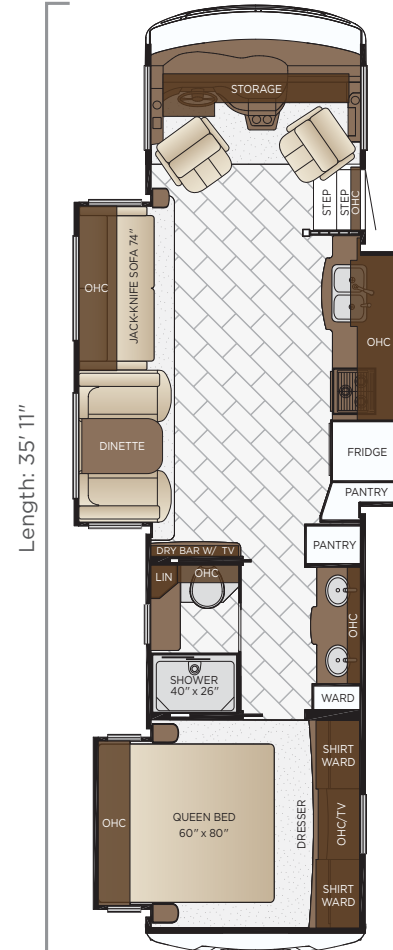
Length	34'11"
Width	101.5"
App. Overall Height	12'08"
Interior Width	95.5"
Interior Height	80"
Grey Tank	60 gal.
Sewage Tank	40 gal.
Water Tank	75 gal.
Propane Tank	25 gal.
Furnace	40,000 btu



Length: 35' 11"

## 3518

Length	35'11"
Width	101.5"
App. Overall Height	12'08"
Interior Width	95.5"
Interior Height	80"
Grey Tank	60 gal.
Sewage Tank	40 gal.
Water Tank	75 gal.
Propane Tank	25 gal.
Furnace	40,000 btu



Length: 35' 11"

## 3532

Length	35'11"
Width	101.5"
App. Overall Height	12'08"
Interior Width	95.5"
Interior Height	80"
Grey Tank	60 gal.
Sewage Tank	40 gal.
Water Tank	75 gal.
Propane Tank	25 gal.
Furnace	40,000 btu



# QUALITY YOU CAN FEEL

Like a fine home, both the 2018 Bay Star Sport and Bay Star are framed 16 inches on center, and are covered by a fiberglass roof with walkable decking and an integrated gutter rail.

## BAY STAR SPORT

FLOOR PLAN	ENGINE HP	AXLE RATIO	FUEL CAP.	WHEEL BASE	FRONT GAWR	REAR GAWR	TAG GAWR	GVWR	GCWR	APP. UVW	APP. NCC
2702	320	4.30	80 gal.	172	7000 lb.	12000 lb.	n/a	18000 lb.	23000 lb.	15191 lb.	2809 lb.
2812	320	5.38	80 gal.	190	7500 lb.	13500 lb.	n/a	20500 lb.	26000 lb.	16320 lb.	4180 lb.
2903	320	5.38	80 gal.	190	7500 lb.	13500 lb.	n/a	20500 lb.	26000 lb.	16395 lb.	4105 lb.
3113	320	5.38	80 gal.	200	7500 lb.	13500 lb.	n/a	20500 lb.	26000 lb.	14564 lb.	5936 lb.
3307	320	5.38	80 gal.	216	7500 lb.	13500 lb.	n/a	20500 lb.	26000 lb.	17664 lb.	2836 lb.
3312	320	5.38	80 gal.	216	7500 lb.	13500 lb.	n/a	20500 lb.	26000 lb.	17664 lb.	2836 lb.

## BAY STAR

FLOOR PLAN	ENGINE HP	AXLE RATIO	FUEL CAP.	WHEEL BASE	FRONT GAWR	REAR GAWR	TAG GAWR	GVWR	GCWR	APP. UVW	APP. NCC
3009	320	5.38	80 gal.	200	8000 lb.	15000 lb.	n/a	22000 lb.	26000 lb.	17494 lb.	4506 lb.
3113	320	5.38	80 gal.	200	8000 lb.	15000 lb.	n/a	22000 lb.	26000 lb.	17834 lb.	4166 lb.
3124	320	5.38	80 gal.	200	8000 lb.	15000 lb.	n/a	22000 lb.	26000 lb.	18174 lb.	3826 lb.
3333	320	5.38	80 gal.	216	8000 lb.	15000 lb.	n/a	22000 lb.	26000 lb.	19114 lb.	2886 lb.
3401	320	5.38	80 gal.	220	8000 lb.	15000 lb.	n/a	22000 lb.	26000 lb.	19186 lb.	2814 lb.
3403	320	5.38	80 gal.	216	8000 lb.	15000 lb.	n/a	22000 lb.	26000 lb.	19178 lb.	2822 lb.
3406	320	5.38	80 gal.	220	8000 lb.	15000 lb.	n/a	22000 lb.	26000 lb.	18540 lb.	3460 lb.
3414	320	5.38	80 gal.	220	8000 lb.	15000 lb.	n/a	22000 lb.	26000 lb.	19178 lb.	2822 lb.
3518	320	6.17	80 gal.	228	9000 lb.	15500 lb.	n/a	24000 lb.	30000 lb.	19322 lb.	4668 lb.
3532	320	6.17	80 gal.	228	9000 lb.	15500 lb.	n/a	24000 lb.	30000 lb.	19322 lb.	4668 lb.

The content in our literature depicts and describes products that are subject to change. For the most recent images and information, please visit [NewmarCorp.com](http://NewmarCorp.com).

Lengths, heights, widths and dry weights are approximate. Weight will vary based on optional equipment added to the above base weight.

**GAWR:** Gross Axle Weight Rating is the maximum permissible weight for an axle.

**GVWR:** Gross Vehicle Weight Rating is the maximum permissible weight for a fully loaded motor coach.

**GCWR:** Gross Combination Weight Rating is the value specified by the manufacturer of the vehicle as the maximum allowable loaded weight of this motor coach and any towed trailer or towed vehicle.

**UVW:** Unloaded Vehicle Weight is the weight of this motor coach as built at the factory with full fuel, engine oil and coolants. Does not include cargo, fresh water, propane gas or dealer-installed accessories.

**NCC:** Net Carrying Capacity is the maximum weight of all occupants, including the driver, personal belongings, food, fresh water, waste water, propane gas, tools, tongue weight of towed vehicle, dealer-installed accessories, etc., that can be carried by the motor coach.

**Specifications supplied by the chassis manufacturer.**

**Bay Star Sport and Bay Star R-Values:**

Roof R-Value = 16

Sidewall R-Value = 11

Floor R-Value = 11

# FEATURES & OPTIONS

# EXTERIOR



Bay Star Motor Coach | Whitecap Décor with Calypso Glazed Maple Cabinetry | Floor Plan 3414

## EXTERIOR FEATURES

Exterior Masterpiece Full Painted Graphics with Clearcoat Finish

Durashield™ Protection on Front Cap

Lighted Exterior Storage Compartments

Automatic Step for Entrance Door

Convex Exterior Mirrors with Defrost

Rear Hitch for Towing Car

Assist Handle at Entrance Door

Undercoating

Mud Flaps

Hydraulic Leveling Jacks

### OPTIONS

Convex Exterior Mirrors with Defrost and Remote Control

Rear Ladder

Flag Pole Bracket

Exterior Kitchen\*

Temporary Windshield Protection for Transport

## CONSTRUCTION FEATURES

BriteTEK™ Roof with Walkable Deck

Gelcoated Fiberglass Exterior Sidewalls, Front & Rear Caps

Aluminum-Frame Sidewalls & Roof Construction, 16" on center

5/8" Foam Insulation Laminated in Sidewalls & Ceiling

### OPTIONS

Polar Pak R19 Batten Insulation in Roof



## WINDOWS, AWNINGS & VENTS

One Piece Tinted Windshield
Frameless Single Pane Tinted Safety-Glass Windows
Power Vent in Kitchen and Bathroom
Skylight Above Shower
Dometic® Weather Pro Side Awning with Aluminum Weather Shield
Slideout Covers
<b>OPTIONS</b>
Frameless Double-Pane Tinted Safety Glass Windows
Rear Window in Bedroom*
Fantastic Vent with Rain Sensor in Kitchen & Bathroom
Bunk Windows*

## CHASSIS FEATURES

Ford® F-53 Chassis 22,000 lb. on 30'-34' Floor Plans
Ford® F-53 Chassis 24,000 lb. on 35' Floor Plans
Cruise Control
Tilt Steering Wheel
Aluminum Wheels

## AIR CONDITIONING & HEATING

13.5M Brisk® Central Air Conditioner
Dash Heater and Air Conditioner
Defrost Fans Built into Front Overhead
Propane Gas Furnace with Ducted Heat
<b>OPTIONS</b>
15.0M Penguin™ Heat Pump Air Conditioner*
Two 13.5 Penguin Heat Pump A/C, 5.5 Onan Generator, 50 Amp Electrical Service with Energy Management System
Auxiliary Heater in Bedroom

## ELECTRICAL FEATURES

4.0 kW Cummins Onan® Generator with Remote Switch and Automatic Changeover
30 Amp Electrical Service with Flexible Cord and Automatic Transfer Switch
Two 12 Volt House Batteries
Battery Disconnect Switch for House Battery
12 Volt Auxiliary Receptacle on Dashboard
45 Amp Converter
Daytime Running Lights
Emergency Engine Start Switch
LED Ceiling Lights
Manually Operated Hold-To-Run Slideout Switch
Cable TV Connection
10 Watt Solar Panel to Charge Chassis Battery
1000 Watt Inverter Run to Drain Lift Pump & TVs on 3403 Floor Plans
Lights in Wardrobes
USB Chargers at Driver/Passenger Seat Area
<b>OPTIONS</b>
1000 Watt Inverter Run to TVs*
50 Amp Electrical Service*
Solar Prep Rated for 1200 Watts with Six Gauge Wire from Roof to House Battery Compartment

## PLUMBING & BATH FEATURES

Demand Water System
Sewage Holding Tank Rinse
Water Heater Bypass System
Dometic® 310 China Bowl Stool
ABS Shower Surround with Shower Door
Systems Monitor Panel
Exterior Shower
<b>OPTIONS</b>
Water Filter for Entire Unit



## INTERIOR FEATURES

Vinyl Ceiling Panels
Decorative Wall Art
Vinyl Floor in Kitchen, Living Area and Bathroom
Carpeting in Bedroom and on Slideout Floors
Interior Assist Handle at Main Entrance Door
Quilted Bedspread, Bed Scarf & Accent Pillow
Inlaid Six Panel Design Interior Passenger Doors
Auto Motion Manual Double Roller Shades on Windows Behind Driver/Passenger Area
Auto Motion Power Shade at Windshield & Manual Shades at Driver & Passenger Side Windows
Dash Panel Color Coordinated ABS
10 Bc Fire Extinguisher, Smoke Detector, Propane and Carbon Monoxide Detector
Shoe Storage Located in Entrance Door Step Compartment
Waste Basket in Kitchen Base

### OPTIONS

Vinyl Tile Floor in Place of Vinyl Wood Floor

## CABINETS & FURNITURE

Calypso Glazed Maple Mitered Designer Cabinet Doors - Matte Finish
Drawers with Full-Extension Guides
Polished Solid Surface Countertop in Kitchen with Stainless Steel Sink
Solid Surface Countertops in Bathroom and Bedroom
Flexsteel® Ultralux Leather Sofa and Front Seats
Lifts on Bed Top
Smooth-Top Mattress
Passenger Seat Work Station
Manual Foot Rest on Passenger Seat
Pullout Pantry Shelves*
Concealed Hinges on Cabinet Doors

### OPTIONS

Astoria Glazed Maple Mitered Designer Cabinets - Matte Finish  
 Sienna Glazed Maple Mitered Designer Cabinets - Matte Finish  
 Combination Desk with Buffet Dinette Table, 2 Fixed & 2 Folding Chairs

Combination Desk/Dinette with Free Standing Hidden Leaf Table, 2 Fixed & 2 Folding Chairs
Buffet Dinette with Free Standing Table
Buffet Dinette
Free Standing Hidden Leaf Dinette Table, 2 Fixed & 2 Folding Chairs*
Drop Down Bunk Bed Over Driver/Passenger Seats with Electric Release Latches*
Drop Down Bunk Bed Over Driver/Passenger Seats with Electric Release Latches and 32" TV in Front Overhead*
Plush Pillow Top Mattress
Folding Cockpit Table
Hide-A-Bed Sofa
Off Door Side-Side Opening Hide-A-Bed Sofa*
Off Door Side 74" Fold-N-Tumble Sofa with Air Mattress*
Side Opening Hide-A-Bed Sofa*
Six Way Power for Driver Seat
84" Hide-A-Bed Sofa*
87" Bunk Sofa*

## APPLIANCES & ACCESSORIES

Three-Burner Range with Oven
30" Over-the-Range Microwave
Norcold® 8 Cf. Refrigerator
Raised Panel Refrigerator Door Insert Panel
6 gal. Gas/Electric Water Heater with Electronic Ignition

### OPTIONS

Frigidaire 10 Cf. Refrigerator with Dedicated 1000 Watt Pure Sine Inverter & 2 Extra Batteries
Norcold 12 Cf. 4-Door Refrigerator with Icemaker*
Icemaker Added to Standard Norcold Refrigerator with Heated Water Line
30" Convection Microwave with 3 Burner Cooktop
Fireplace in Living Area (Requires 50 amp Service Option)*
110 Volt Heat Pads for Holding Tanks
Icemaker Added to Standard Norcold® Refrigerator

## AUDIO, VIDEO & ACCESSORIES

Sony LED TV & DVD Player in Living and Bedroom Areas (TV Sizes Vary per Floor Plan)
Dash Radio/CD Player with Harman/JBL 180 Watt Sound System
Rearview Colored Monitor System with Audio
Winegard Digital TV Antenna
Satellite Dish Prep on Roof
High Definition Component Wiring
TV Jack and 110 Volt Recept in Door Side Exterior Storage Compartment
Bluetooth Microphone for Sony Dash Radio

### OPTIONS

32" LED TV in Front Overhead
32" LED TV in Exterior Storage Compartment*
32" LED TV Exterior TV Only*
Blu-ray Disc Players
Side View Cameras Displayed onto Rearview Monitor Screen
Sirius Radio Capability with Antenna (Does Not Include Monthly Subscription)
Bose Solo 5 Soundbar Sound System
WiFiRanger Skypro Pack Router
Xite Dash Radio, 6" Monitor with Rand McNally Navigation
Winegard Automatic Open Face Satellite Dish
Winegard® Automatic Dome Satellite Dish
Winegard in Motion Dome Satellite Dish
Winegard Automatic Open Face SWM Satellite
Winegard Cellular In Motion WiFi
Winegard Cellular In Motion WiFi Prep

\*Check with dealership on floor plan availability.

The content in our literature depicts and describes products that are subject to change. For the most recent images and information, please visit [NewmarCorp.com](http://NewmarCorp.com).



# THE NEWMAR CUSTOMER EXPERIENCE

The Newmar Difference goes beyond our industry-leading motor coaches to deliver you with an unrivaled ownership experience.



## QUALITY FROM THE START

Every Newmar is crafted one at a time by folks who have spent an average of eight years building them. And each coach we assemble must undergo more than 1,000 quality checks before ever leaving the Newmar factory.



## EVERYTHING IN ONE PLACE

As a Newmar owner, you'll find resources specific to your coach through **Newgle**, an easy-to-use knowledge base that houses everything from user guides to technical support documents.



## FRIENDS FOR LIFE

Join Newmar and meet fellow owners through the **Newmar Kountry Klub**, a top social club for RV travelers. Or, connect using the world's only social sharing network created for RVers, by RVers — **RoadLens.io**.



## SEAMLESS SERVICE

Available 24/7, our service specialists guarantee dealer repair authorization within four hours, and all in-stock parts ship the same day, free of charge. If a part is out of stock, we'll pull it from our production floor or order the part from the appropriate vendor right away.



## ROCK-SOLID WARRANTY COVERAGE

All models include a 1-year/unlimited mileage limited warranty and a 5-year, non-transferable structural warranty that covers your vehicle's superstructure in the event it fails to perform. Ask your Newmar dealer for details.

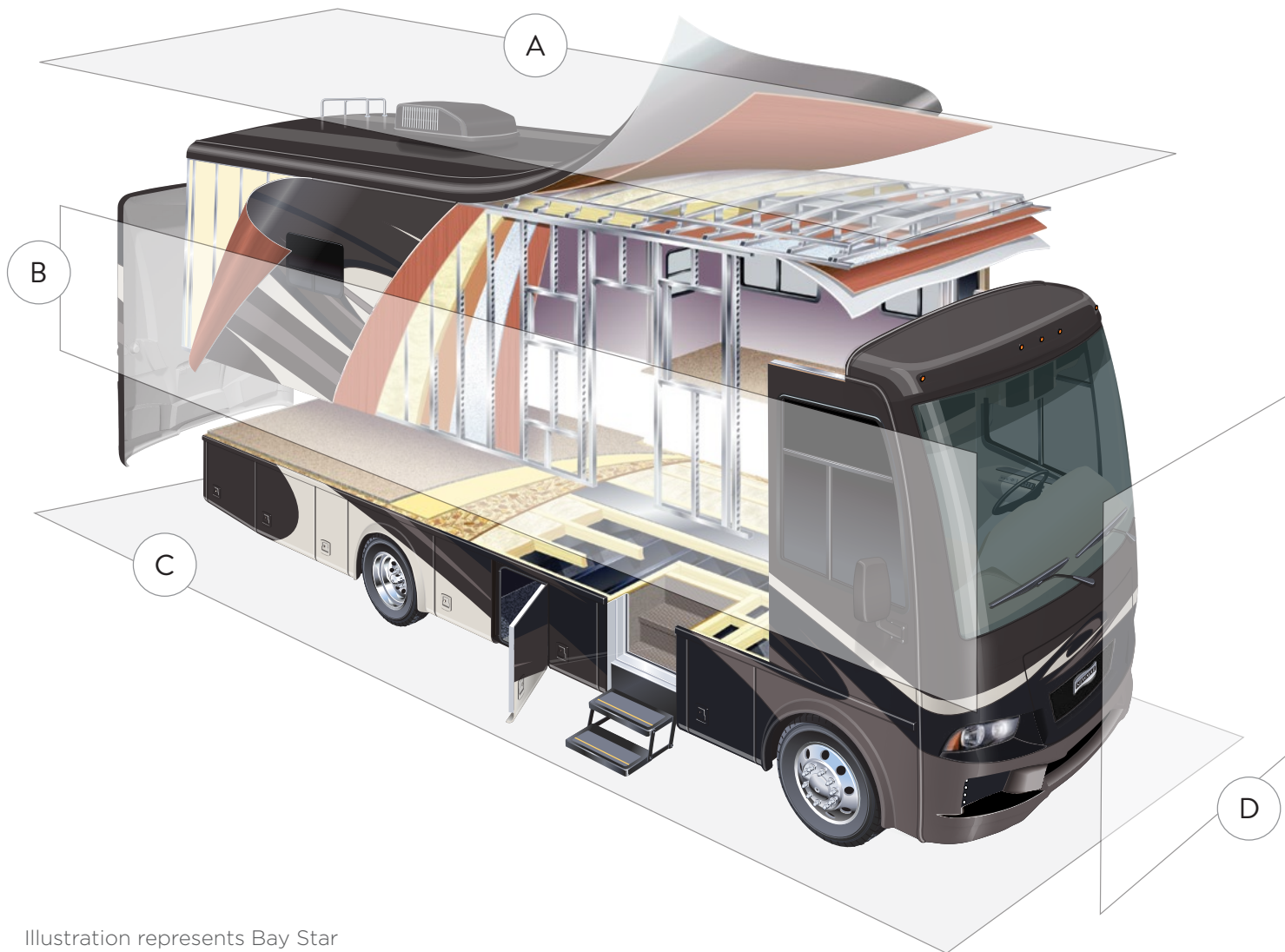


Illustration represents Bay Star

## A. ROOF

---

- BriteTEK™ Roof with Walkable Decking
- Batten Insulation
- A/C Ducting
- 16" on Center Aluminum Framing
- Kraft Paper Vapor Barrier
- 5/8" Bead Foam
- 3/16" Panel
- Padded Vinyl Overlay

## B. SIDEWALL

---

- Interior Wall Panel
- 5/8" Bead Foam
- Kraft Paper Vapor Barrier
- Batten Insulation
- Composite One-Piece Gelcoat Exterior Sidewall
- Aluminum Framing

## C. FLOOR

---

- |                    |                               |
|--------------------|-------------------------------|
| Carpet             | Batten Insulation             |
| Carpet Padding     | 16" on Center Wood Framing    |
| 5/8" Floor Decking | Polyethylene Moisture Barrier |

## D. EXTERIOR

---

- |                                     |  |
|-------------------------------------|--|
| 13.5M Brisk Central Air Conditioner | Frameless, Tinted Safety-Glass Windows |
| One-Piece Windshield                |  |



# OUR PARTNERS

*Newmar Quality Begins With The Company We Keep*

Newmar only works with suppliers dedicated to providing our customers with unrivaled quality, comfort and convenience. Best-in-class performance from names you can trust. At Newmar, that's our difference, and our promise.

## **BASF**

The Coatings division of BASF is a global expert in the development and production of innovative and sustainable OEM and refinish coatings. Coatings by BASF – solutions beyond your imagination.

## **Flexsteel**

Flexsteel Recreation offers innovative furniture designed for a life that rarely sits still. Comfortable and space-saving, Flexsteel furniture ensures your RV is always ready for dining, sleeping or hosting guests.

## **Freightliner Custom Chassis**

Freightliner Custom Chassis are renowned for their exceptional ride, excellent maneuverability, advanced chassis technology, and nationwide 24/7 factory-direct support.

## **Industrial Finishes**

Industrial Finishes has supported RV manufacturers for over four decades. The Industrial Finishes paint process delivers uncompromising quality, providing your coach with a true Masterpiece™ finish.

## **Sony**

Beautifully designed Sony TVs & Blu-ray players deliver an immersive picture and true-to-life sound. Revolutionize every aspect of your home entertainment experience with Sony.

## **Spartan Motors**

An American company with over 30 years of experience designing and manufacturing the premier motorhome chassis, which deliver superior performance, exceptional safety ratings, and industry-leading technology.





## THE NEWMAR LEGACY

*50 years, built one by one.*

Driven to engineer and build the highest-quality RVs the world had ever seen, Marvin Miller and Marvin Newcomer founded Newmar Corporation in 1968.

The pair set up shop in the small Midwest woodworking town of Nappanee, Indiana, where they discovered the people who would establish Newmar as a leading RV manufacturer over the next half century. Artisans and engineers, product designers and quality-control experts to whom being the best is more important than being the biggest.

As we move toward 100 years as a company, our products will continue to evolve. But one thing that will never change is our commitment to hand-crafting excellence, one coach at a time.





*Bay Star*



NEWMAR CORPORATION | 355 N DELAWARE ST | PO BOX 30 | NAPPANEE, IN 46550-0030 | 574-773-7791 | FAX 574-773-2895

[www.newmarcorp.com](http://www.newmarcorp.com)