

2015

# RIVERSIDE

by Riverside Travel Trailer

Find your Riverside today!



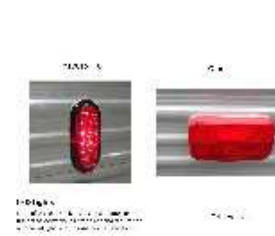
[www.riversidetrailer.com](http://www.riversidetrailer.com)



Find us on facebook at Riverside Travel Trailer, Inc

## Specifications

Key Specifications														
Model	24RPM	24SKY	25RBS	27RBSK	28DBS	29BKSK	30LOFTK	31BHSK	32FKS	32RKS	32FLS	32RLS	32LOFTRBS	39K'S
Length	28' 5"	27' 11"	29' 4"	30' 11"	30' 11"	34' 6"	31' 8"	36' 1"	35' 1"	35' 8"	35' 8"	36' 1"	36' 4"	39' 8"
Dry Weight	6020	5320	5740	6659	6140	7260	7090	7770	7680	7640	7970	7640	8540	8940
Hitch Weight	1020	700	940	940	930	760	700	1020	940	880	1020	880	1180	1400
Height	11' 4"	10'	11'	11'	11'	11'	12' 6"	11'	11'	11'	11'	11'	12' 6"	11'



See a detailed product comparison on our website at

[www.riversidetrailer.com](http://www.riversidetrailer.com)

Just click the "Why Riverside?" link and see how our products compare.

## Standard Features

- LED Lights
- Four Galley Outlets
- Patio TV Hook Up
- Large TV Entertainment Center
- Designer Window Treatment
- LP Oven with Cook Top
- LP Bottle Cover
- Rubber Roof
- Adjustable AC Vents
- Two Dinette Doors
- Bedroom TV Hook Up
- Radius Entry Doors
- Microwave
- Exterior Speakers
- Spare Tire Carrier and Cover
- Dual LP Bottles
- LP Forced Air Furnace
- Radius Luggage Doors

- Awning Lights Outlet
- Triple Entry Step
- Hitch Light
- Upgrade Mattress
- Diamond Plate Rock Guard
- Kitchen Counter Backsplash
- Wood Cabinet Doors
- Omni Directional TV Antenna
- LP Gas Line Manifold
- Bathroom Power Vent
- Exterior Shower
- Awning
- AM/FM/CD/DVD Stereo
- Folding Entry Assist Handle
- Gas/Elec/DSI Water Heater
- 13.5 Roof Ducted Air
- Galley Drawers
- Tinted Windows

All specifications contained herein are based on the latest product information at time of printing. Riverside Travel Trailer, Inc. reserves the right to make changes and specifications at any time without notice and assumes no responsibility for errors in this brochure.

Riverside Travel Trailer, Inc  
 PO Box 1099  
 Peru, IN 46970  
 765-472-3920  
[www.riversidetrailer.com](http://www.riversidetrailer.com)



Your Local Dealer:

## Interior

Riverside interiors offer many upgrade features such as the LED lighting, pleated shades, and two dinette doors to name a few. We include a maximum number of storage areas and we encourage you to count how many "doors and drawers" are included. We are sure ours will out number other trailers of similar size.

Photo "A" is the slide room featured in Mocha interior. "B" is the dresser for the 32RKS and 32FLS. "C" is interior storage found above the outside kitchen in the 30LOFTK. "D" is the bathroom in the 32FKS and 32FLS models. "E" is the bi-level galley found in the 30LOFTK, 25RBS, 27RBSK, 28DBS, 31BHSK and 39 models. "F" is the loft area of the 30LOFTK.



## Why Traditional Walls Are Better

A simple search of "RV delamination" in any internet search engine will return a list of significant and expensive damage to campers with fiberglass walls by the intrusion of water to the sidewall causing plywood and adhesives to let go resulting in blistering of the skin. This is referred to as delamination. There are no easy repairs to this type of problem and the resulting depreciation to the value of the camper can cause lasting financial issues.

Traditionally manufactured trailers do not delaminate. Here are some other benefits to traditional manufacturing:

- \* Wood framing offers insulation, hollow aluminum does not.
- \* Metal siding is painted much like an automobile and does not fade. Fiberglass fades with age.
- \* Metal can be purchased in multiple colors improving the exterior looks. Fiberglass panels are only one color and stickers or paint added for color.
- \* Metal has "ridges" which provide lateral lines that improves the look of the trailer. Fiberglass is smooth often showing panel seams.
- \* Metal allows for blocking to be added to the wall for aftermarket accessories should you wish to add items at a later date. Fiberglass walls cannot be altered.
- \* Wood frame, metal sided units allow for flex. Fiberglass units under stress can crack.

### Samples of Fiberglass Delamination



## Residential Package

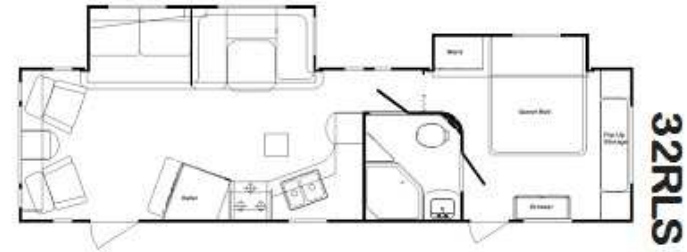
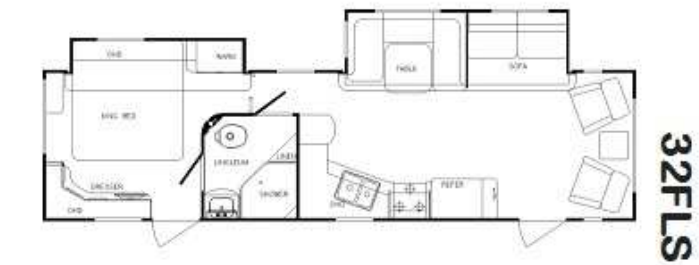
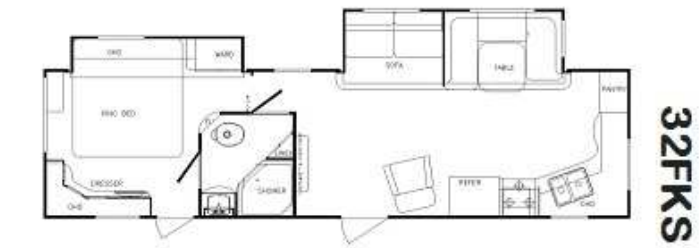
The residential package consists of a 23 cubic foot refrigerator with ice maker and in door drink dispenser, a 1000 watt inverter to power the refrigerator while towing, a tri fold sofa bed, recliner chair where chairs are called for, and a 15K roof air. This package is available on the following models:

- 27RBSK
- 32FKS
- 32RKS
- 32FLS
- 30LOFTK
- 32LOFTRB



# Floor Plans

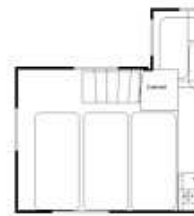
## Suite Coaches



## Loft Coaches



\*Upper area  
30LOFTK



\*Lower Area for  
32LOFTRBS



## Bunk Bed Coaches



# Toy Hauler

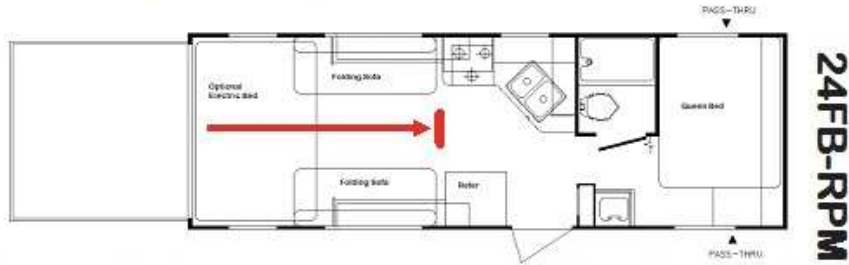
# Photo Gallery



Riverside's toy hauler features a front generator tray so you can take your portable generator along with you. The ladder provides ease of roof access and the "beaver tail" floor acts to extend the ramp reducing the angle you need to drive to move motorized toys into and out of the trailer.

This trailer has a dry weight of just over 6,000 pounds which leaves plenty of carrying capacity for those items you want to take along. The ramp door is slip resistant and has a rolling capacity of 3000 pounds. Radial tires, LED lighting, optional aluminum rims and two tone metal finish the look.

Primary storage from the ramp door closed to the red line is 10' 6".



24FB-RPM



Looking at the photos counter clock wise, the first shows the sofas in the travel position. Under these sofas are steel wheel wells. We use steel so you will not damage them when loading or from road debris. Next shows the sofas in the entertaining or relaxing position. The lower skirt hides any items you wish to stow under the sofas while in this position. The lower photos shows the sofas in the sleeping position. When both are laid out in this fashion a large sleeping area is created for a good night's sleep.



The optional electric bed operates on 12volt power and raises to the ceiling when not needed, and lowers to create another sleeping area. The galley includes an oven, microwave, double bowl sink with counter top back-splash. The TV mounts under the stereo which also includes a DVD player.



Front bedroom has queen bed sleeping, TV hook up, plenty of cabinets, and the wash up sink. The bathroom includes a foot pedal flush toilet, tub shower and a 12vt exhaust vent. The camper is wall to wall linoleum so there is no carpet to hold dirt or moisture and clean up is easy.



Master suites include reading lights, doors above bed, and plenty of outlets. Lights are aimed at your book!



Optional Radiant Technology insulation wrap available for use in extreme conditions.



Two storage doors on larger slide rooms, one for access to under standard sofa and one for under the "U" shaped dinette.



LED lighting reduces 12vt power requirements and eliminates bulb changes!



Outside kitchen models feature a double bowl sink for ease of lunch time clean up!



"U" shaped dinettes include two interior and one exterior storage areas.



Dual run air conditioning ducts significantly increase the distribution of cool air throughout the camper.



Standard oven and three burner cook top. All ready for "pizza night".



A dedicated outlet for awning lights is powered by an interior switch for convenience.

For more detail photos and descriptions visit our website at [www.riversidetrailer.com](http://www.riversidetrailer.com) and click the "Why Riverside" tab!