



*Light*  
SERIES



**THE FIRST NAME IN CAMPING.  
THE TRUSTED NAME IN RVs.**





**Light**  
SERIES

HOME

**DISCOVER**

THE COLEMAN LIGHT



**YOUR HOME AWAY FROM HOME**

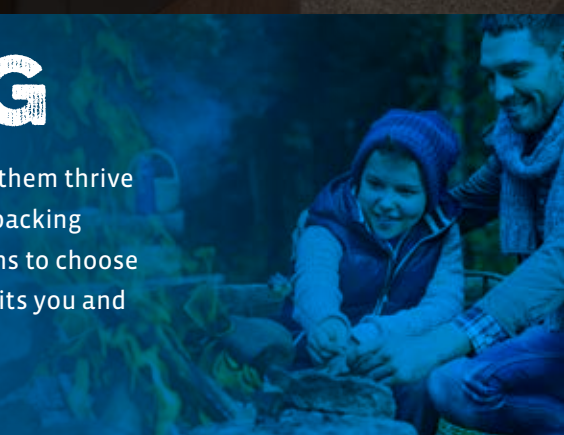
The Coleman Light Series was built for outdoor play and a relaxing indoor stay, delivering a feature-rich kitchen, Bluetooth entertainment system, power awning with LED patio lighting, as well as laminated floor and walls that increase durability and overall weight reduction.

**THE FIRST NAME IN CAMPING**



The Outdoor Company®

For more than 100 years, millions of people have trusted the Coleman name to help them thrive in the great outdoors. These all-new Coleman RVs deliver on that same reputation, packing more camping conveniences into one value-packed product! With multiple floorplans to choose from and a number of residential-style features throughout, the campground awaits you and your Coleman RV.







## EVER-RESTFUL NIGHTS

An upgraded Rest Easy mattress greets you when the day is over, while underneath the bed you'll find extra storage space that allows you to take even more camping essentials.



## A SPACE TO REFRESH

When it comes to Coleman, even deluxe amenities are practical. These bathrooms include a foot pedal flush toilet for the ultimate in convenience, as well as a full shower or tub surround and wooden medicine cabinet with mirror.



**Light**  
SERIES



**iN-Command**  
CONTROL SYSTEMS

## ALWAYS IN-COMMAND

The exclusive Jensen iN-Command touch pad and smartphone based apps help Coleman Light owners control their whole-coach features, like the water pump, water heater, power awning and light fixtures - all without stumbling around in the dark for switches or manually fumbling with adjustable devices.

NORTH AMERICA'S  
**TRUSTED**  
NAME IN RVs



# EXPLORE

THE COLEMAN LIGHT



The Outdoor Company®

## A ROOM WITH A VIEW

The large power awning comes complete with LED patio lighting to provide an ambiance perfect for late summer nights.

## YOUR MOBILE PICNIC AREA

Take mealtime out of the kitchen with an exterior kitchenette packed with modern conveniences. This outdoor area brings with it a swivel grill and countertop area to fix campground food when a fire is out of the question.

## ROOM FOR ALL THE ESSENTIALS

From sporting equipment to backup clothing and even souvenirs, tackle Mother Nature with all your gear in tow, thanks to a roomy pass-through storage space that can hold whatever the occasion calls for.

## RESIDENTIAL COMFORTS

A Coleman kitchen always comes prepared with feature-rich amenities, like a commercial-grade faucet and large low-rise sink.

## EASY SETUP AND DEPARTURE

In addition to a fully-enclosed underbody that improves handling, the Light Series comes with easy-to-use electric stabilizer jacks, while the Light LX Series sports four high-capacity stabilizer jacks - each making setup and departure easier than ever.

## EXTERIOR

120V exterior outlet  
28" entrance door(s)  
Aluminum framed walls  
Aluminum tread entry step(s)\*  
Awning  
Black tank flush\*  
Diamond plate  
Enclosed heated holding tanks (all tanks)\*  
EZ-Lube axles  
Fender skirts (black)  
Fiberglass sidewalls  
Folding entry handle (main door)\*  
Folding entry step  
Friction entry door hinge\*  
Front and rear jacks  
Galvanized steel roof rafters  
Laminated aluminum floor assembly  
LED porch light with interior switch\*  
Magnetic baggage door holders  
Nitro fill radial tires  
Quick-connect, 30-amp power cord\*  
Radius, swept-back front wall  
Slam-latch storage compartments\*  
Steel wheels (silver)  
Switched LED pass-thru storage lighting  
Taillights  
Tinted, framed safety-glass windows

## INTERIOR

12V decorative LED ceiling light at dinette\*  
60" X 80" residential mattress\*  
80" interior height  
Acrylic range backsplash with LED accent\*  
Bead-board cabinet door insets in kitchen overhead\*  
Beaflor residential linoleum with seven-year warranty  
Bedroom TV hookup with DVD connection  
Bedsread\*  
Brushed nickel hardware  
Bunk ladder (select models)  
Dual LED reading lights (select models)  
Fire extinguisher  
Full-extension, ball-bearing drawer guides throughout  
Hardwood cabinet doors  
High-compression countertops throughout

Interior control center  
Large residential kitchen sink  
LED ceiling lights throughout  
Mini blinds (kitchen window and bunk areas)  
Pendant light in kitchen (select models)\*  
Pleated night shades  
Pocket/slider privacy doors in bedroom areas  
Porcelain foot-pedal flush toilet\*  
Radius dinette cushions  
Radius-glass shower door (select models)\*  
Refrigerator insert  
Shower curtain (select models)  
Shower skylight in bathroom\*  
Smoke, propane and carbon monoxide detectors  
Soft-gathered fabric valance at bunks (select models)\*  
Stainless-steel kitchen faucet with sprayer\*  
Swivel rockers (select models)  
Teddy bear bunk mats  
Tub/shower surround\*  
Wood medicine cabinet with mirror\*

## APPLIANCES

12V USB charging outlets in select locations\*  
13,500-BTU ducted roof A/C  
13,500-BTU roof A/C with shroud-mounted controls  
17" oven\*  
2-burner cooktop (LX Series)  
20-lb. propane bottle(s) with black ABS cover  
20,000- to 30,000-BTU furnace  
3-burner cooktop with piezo ignition\*  
4.2 cu. ft. refrigerator (LX Series 1755 only)  
6 cu. ft. double-door refrigerator (select models)  
6-gal. gas/electric DSI water heater  
60-gal. fresh water system\*  
Cable/satellite TV hookup  
Coleman outside grill and stove with griddle (select models)  
Digital thermostat  
Interior speakers  
Microwave  
Power vent in bathroom  
Range hood with 12V light and exhaust fan  
Solid-state converter with built-in battery charger  
Stereo AM/FM/CD/DVD/Bluetooth/MP3/auxiliary  
TV antenna with signal boost  
Water heater bypass kit

## OPTIONS

15,000-BTU A/C in lieu of 13,500 (select models)\*  
50-amp power with prep for 2nd A/C (select models)\*  
Aluminum wheels\*  
CSA standards  
iN-Command operating system (mandatory)\*

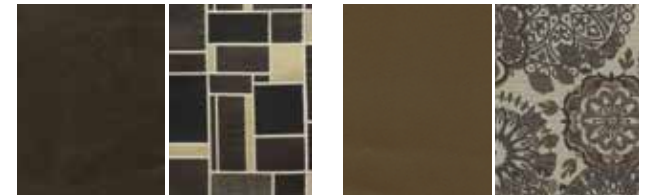
## GATEWAY LUXURY PACKAGE (LIGHT SERIES ONLY) (MANDATORY)

Exterior speakers  
Front and rear power stabilizer jacks  
Outside shower  
Power awning with LED light  
Solar charging connection  
Spare tire and cover  
Stainless-steel appliance upgrade

## ESCAPE PACKAGE (LIGHT LX SERIES ONLY) (MANDATORY)

Black sport wheels  
Outside speakers  
Power awning with LED light  
Solar charging connection  
Spare tire with carrier

## COLEMAN DECOR



MACKINAC DECOR

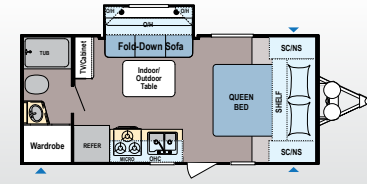
SHORELINE DECOR



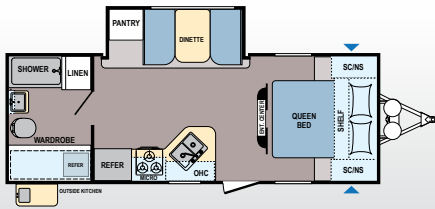
To check for recent updates to floorplans and specifications. Scan this **QR CODE** with your favorite QR Reader application.

**\*NOT AVAILABLE ON LX SERIES MODELS**

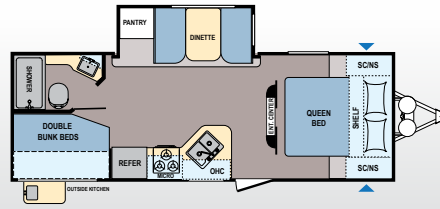
# THE FIRST NAME IN CAMPING. THE TRUSTED NAME IN RVS.



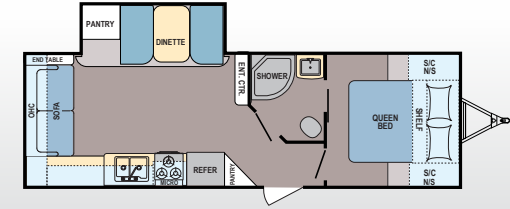
**LIGHT | 1805RB | Sleeps 4**  
Ext. Length: 22' 9" Ext. Height: 10' 10" Average Shipping Weight: 4,136



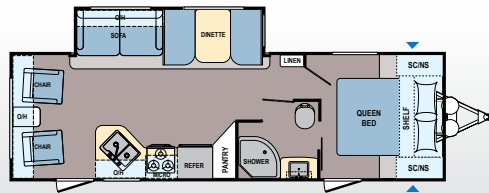
**LIGHT | 2305QB | Sleeps 4**  
Ext. Length: 27' 0" Ext. Height: 10' 10" Average Shipping Weight: 4,901



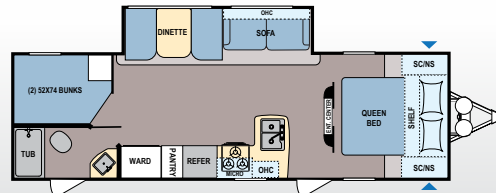
**LIGHT | 2405BH | Sleeps 6-8**  
Ext. Length: 27' 5" Ext. Height: 10' 11" Average Shipping Weight: 5,081



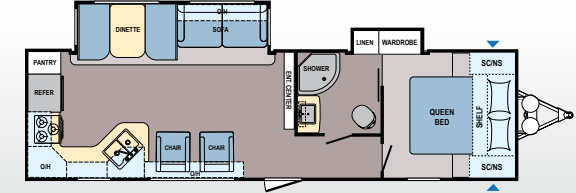
**LIGHT | 2515RL | Sleeps 4-6**  
Ext. Length: 29' 5" Ext. Height: 10' 11" Average Shipping Weight: 5,260



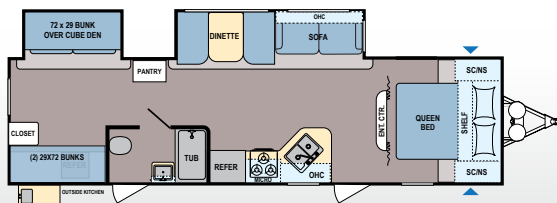
**LIGHT | 2605RL | Sleeps 4-6**  
Ext. Length: 31' 1" Ext. Height: 10' 11" Average Shipping Weight: 5,532



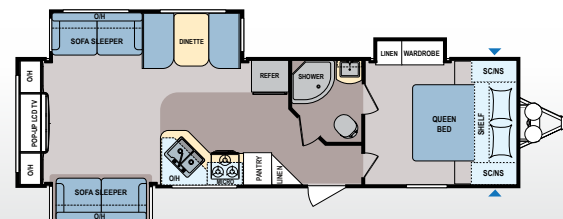
**LIGHT | 2855BH | Sleeps 8-10**  
Ext. Length: 31' 3" Ext. Height: 10' 11" Average Shipping Weight: 5,588



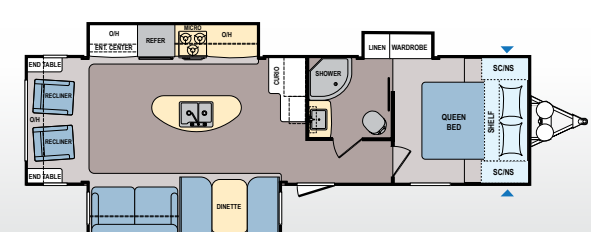
**LIGHT | 2915RK | Sleeps 4-6**  
Ext. Length: 34' 0" Ext. Height: 10' 10" Average Shipping Weight: 6,358



**LIGHT | 3015BH | Sleeps 8-10**  
Ext. Length: 34' 9" Ext. Height: 10' 9" Average Shipping Weight: 6,331



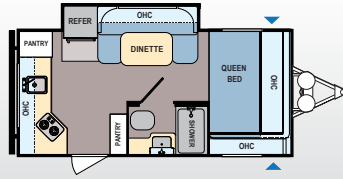
**LIGHT | 3025RE | Sleeps 6-8**  
Ext. Length: 34' 11" Ext. Height: 11' 1" Average Shipping Weight: 6,829



**LIGHT | 3035RL | Sleeps 6-8**  
Ext. Length: 34' 10" Ext. Height: 11' 2" Average Shipping Weight: 7,106

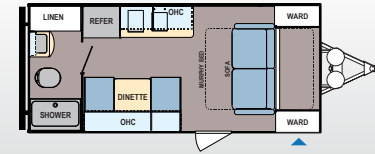


# COLEMAN LIGHT LX MODELS



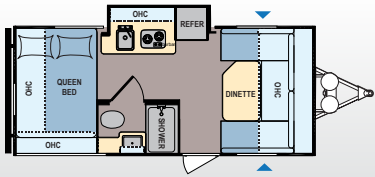
## LIGHT LX | 1605FB | Sleeps 3-4

Ext. Length: 20' 11" Ext. Height: 8' 11" Average Shipping Weight: TBD



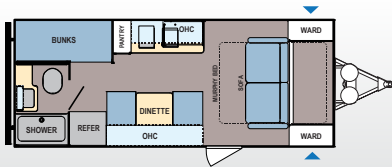
## LIGHT LX | 1705RB | Sleeps 3-4

Ext. Length: 20' 11" Ext. Height: 8' 11" Average Shipping Weight: 3,484



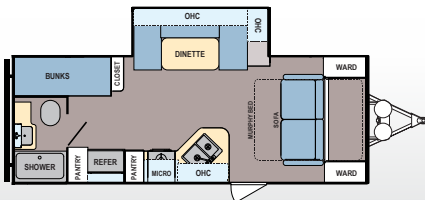
## LIGHT LX | 1755FD | Sleeps 3-4

Ext. Length: 22' 1" Ext. Height: 8' 11" Average Shipping Weight: TBD



## LIGHT LX | 1925BH | Sleeps 5-6

Ext. Length: 23' 10" Ext. Height: 10' 3" Average Shipping Weight: 3,787



## LIGHT LX | 2155BH | Sleeps 5-6

Ext. Length: 25' 9" Ext. Height: 10' 3" Average Shipping Weight: TBD

# COLEMAN SPECIFICATIONS

FLOORPLAN	DIMENSIONS			WEIGHTS (LBS.)			TANKS (GALS.)		
	*EXTERIOR TRAVEL LENGTH	EXTERIOR WIDTH	EXTERIOR HEIGHT (WITH A/C)	**AVERAGE SHIPPING WEIGHT	DRY HITCH WEIGHT	CARGO CARRYING CAPACITY	***FRESH WATER CAPACITY	GREY WATER CAPACITY	BLACK WATER CAPACITY
1705RB	21 FT, 11 IN	96"	125"	3,484	491	1,356	46	39	39
1605FB	20 FT, 11 IN	96"	107"	TBD	TBD	TBD	TBD	TBD	TBD
1755FD	20 FT, 1 IN	96"	107"	TBD	TBD	TBD	TBD	TBD	TBD
1925BH	23 FT, 10 IN	96"	123"	3,787	583	3,813	46	39	39
2155BH	25 FT, 9 IN	96"	123"	TBD	TBD	TBD	TBD	TBD	TBD
1805RB	22 FT, 9 IN	96"	130"	4,136	492	3,464	60	39	28
2305QB	27 FT, 0 IN	96"	130"	4,901	507	2,699	60	42	42
2405BH	27 FT, 6 IN	96"	131"	5,081	562	2,519	60	39	28
2515RL	29 FT, 5 IN	96"	131"	5,260	566	2,340	60	39	28
2605RL	31 FT, 1 IN	96"	131"	5,532	702	2,068	60	39	28
2855BH	31 FT, 3.375 IN	96"	131"	5,587	733	2,013	60	67	28
2915RK	34 FT, 0 IN	96"	130"	6,358	642	1,242	60	67	28
3015BH	34 FT, 9 IN	96"	129"	6,376	741	1,224	60	39	28
3025RE	34 FT, 11 IN	96"	133"	6,829	1,011	2,851	60	39	28
3035RL	34 FT, 10 IN	96"	134"	7,106	1,005	2,574	60	39	28

\*Our weights represent how most units are built, inclusive of many commonly-ordered options. \*\*Length is defined as the distance from the centerline of hitch pin/coupler to rear bumper of trailer. \*\*\*Fresh water capacity includes water heater capacity.

# NORTH AMERICA'S TRUSTED NAME IN RVs



Since 1900, the **Coleman® Company, Inc.** has led the world in manufacturing of camping gear and outdoor equipment. From the renowned Coleman lantern to stoves, tents, sleeping bags and coolers, Coleman's reputation for high-quality camping products is legendary.

Whether your outdoor activities involve hiking, camping, fishing, hunting, boating, swimming, tailgating or simply relaxing, Coleman offers everything you need to satisfy your family's dreams.

Coleman's floorplans are not only loaded with

added value and innovative features, they're designed to help your family get the most out of every camping experience.


After all, Coleman is Camping!

We invite you to visit your nearest Coleman RV dealer today, and find out for yourself why Coleman is the most respected name in outdoor recreation.



Manufactured under license by:  
Dutchmen Manufacturing, Inc.  
PO Box 2000 • 2164 Caragana Court  
Goshen, Indiana 46527  
(574) 537-0600  
[www.dutchmen.com](http://www.dutchmen.com)

**YOUR LOCAL DEALER**

Disclaimer: Product information is as accurate as possible as of the date of publication of this brochure. Features, floorplans and specifications are subject to change without notice. Please consult our website for more current product information and specifications. Coleman®, Dutchmen® and  are trademarks of The Coleman® Company, Inc., and are used under license.