

2018 AMERICAN DREAM

2018 AMERICAN DREAM BY AMERICAN COACH





AMERICAN DREAM 45T SHOWN IN VENETIAN SAND DECOR & HIGH GLOSS CHESTNUT WOOD CABINERY



THE FREEDOM TO DREAM

The horizon line has long called to America's pioneering spirit, each sunset begging to be touched. So at American Coach, we built a luxury motor coach that would redefine your dream journey. Riding on a custom Liberty Chassis and offering the most intuitive cab features, the American Dream makes getaways especially enviable. Plus with an attention to detail that only American Coach delivers, this dream coach exceeds every expectation.

LUXURY BEYOND IMAGINE

For those who dream of living in American luxury, we built the American Dream, a motorhome that takes comfort and style beyond the imaginable. Luxury is found in every corner. With an attention to detail that only American Coach delivers, the American Dream exceeds every expectation.





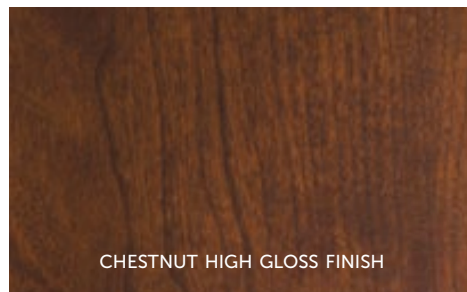
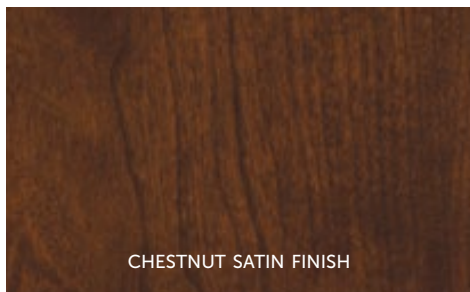
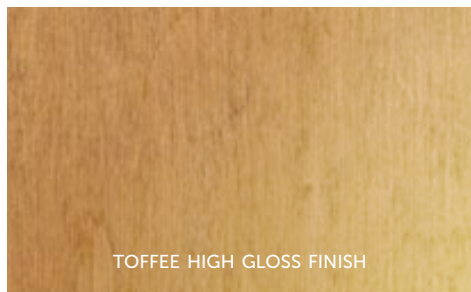
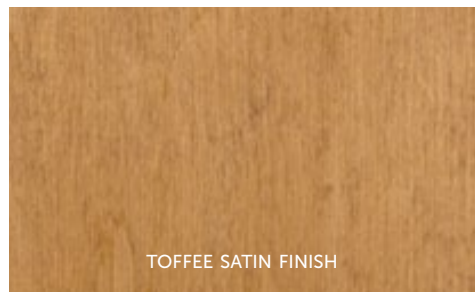
Combining the finest appliances, like a Whirlpool French-door refrigerator, with elegant touches, like satin-finish or high-gloss cabinetry, the American Dream is a statement in luxury.



DÉCOR OPTIONS



1 BACKSPLASH 2 COUNTERTOP 3 TILE 4 BEDSPREAD 5 BED ACCENT 6 SOFA 7 LIVING ACCENT 8 CARPET



CUSTOM PAINT FOR THAT FINAL TOUCH

We take pride in every detail of our coaches, right down to the gleam of each paint package, which is why American Coach features its very own custom paint facility at its manufacturing location in Decatur, Indiana. Every coach makes its way through the 125,000-square-foot facility, visiting eight different downdraft paint booth stations to achieve American Coach's pristine look — an automotive full-body paint with sand and buff high-gloss finish.



AMPLIFY



LUSTER

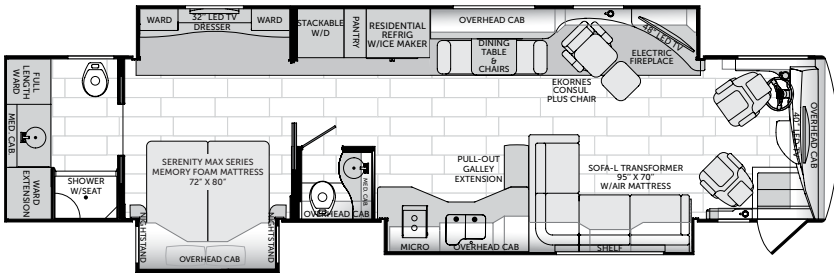


PACIFIC

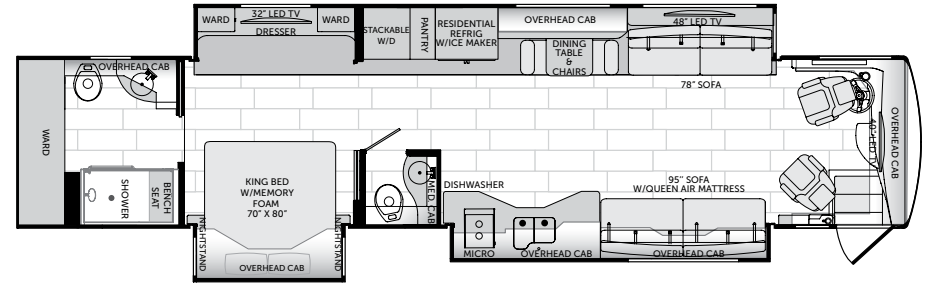


SILVERLIGHT

FLOORPLANS

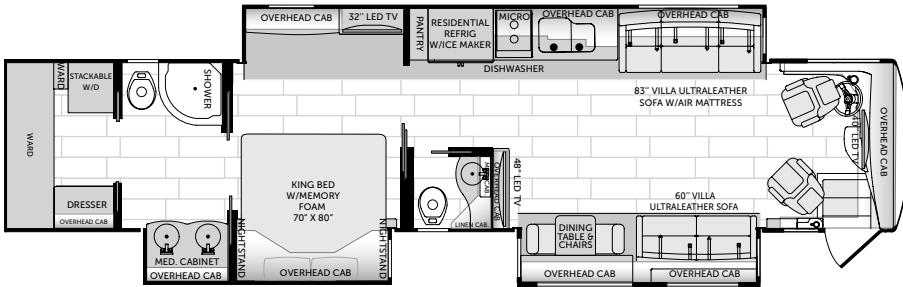


42G



45A

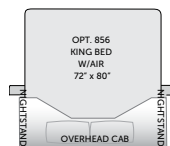
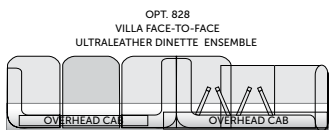
OPTIONS 856



45T

OPTIONS 828, 856

OPTIONS



STANDARDS AND OPTIONS

INTERIOR

GENERAL AMENITIES

- 30" Deep Full Wall Slide-Out
- Fan-Tastic® Rain Sensor Power Roof Vents w/3-Speed Fan (3)
- Full Tile Floor
- Heated Tile Floor
- Interior MultiPlex Power Management System
- LED Ceiling & Task Lighting
- Lined Cabinet Interiors
- Pop-Up Outlet at Dinette Countertop w/USB Outlets
- Power Grasscloth Shades & Blackout Night Roller Blinds
- Premium Hardwood Face-Framed Cabinetry & Moldings
- Solid-Surface Entry-Step w/LED Accent Lights & Power Cover

DRIVER CONVENIENCE

- Adjustable Brake & Throttle Pedals
- Chrome, Heated Side-View Mirrors w/Remote Adjustment & Turn Signal Indicators, Side Vision Cameras Integrated into Mirrors
- Dual-Dash Monitor Design
- Keyless Entry Door Access w/Key Fob
- Power Driver Window
- Powered Windshield Privacy Blinds & Shades
- Pressure Pro® Active Tire Pressure Monitoring System
- Rand McNally RV Navigation
- SGM Dash Climate Control
- Silverleaf® Chassis Monitoring System
- Villa® 6-Way Power Driver Seat w/Heat, Power Lumbar & Adjustable Arms (Ultraleather™)
- Villa 6-Way Power Passenger Seat w/Heat, Power Lumbar, Adjustable Arms & Electric Footrest (Ultraleather™)
- Color Camera Monitor w/One-Way Audio
- Sony® Rear-View Camera
- Xite® Touch Screen Dash Radio w/GPS Navigation & Sirius® Satellite Radio (Subscription Required)

LIVING AREA

- Central Vacuum System
- Raised-Panel Cabinet Doors
- Winegard In-Motion Satellite System
- Electric Fireplace (42G)

GALLEY

- Countertop Decorative Edge Treatment
- Decorative Backsplash w/LED Light Strip
- Dehco® High-Rise Galley Faucet w/Pullout Sprayer
- Polished Solid-Surface Countertop & Flush Sink Covers
- Roller Bearing Full Extension Drawer Guides
- Stainless Steel Under-Mount Double-Bowl Sink

ELECTRONICS

- Sony® Blu-ray® Home Entertainment System w/WiFi
- Front Overhead Sony 40" LED HDTV
- Sony 48" LED HDTV

APPLIANCES

- Convection Microwave Oven
- Dishwasher Drawer w/Cabinet Wood Front
- Flush-Mount Electric 2-Burner Induction Cooktop
- Whirlpool® French Door Refrigerator w/Icemaker In Door

BEDROOM

- Electronic First Alert® Hidden Safe
- Exclusive Serenity Series King Mattress w/Signature Memory Foam
- Exclusive Serenity Max Series w/Adjustable His & Her Section & Head & Foot Massage Component Included (42G)
- Full-Length Rear Wardrobe (N/A 42G)
- Hardwood Framed Headboard w/Padded Fabric Accent
- Lift-Up Bed w/Under-Bed Storage (N/A 42G)
- Polished Solid-Surface Counter & Nightstand Tops
- Recessed Bedroom Ceiling Fan
- Remote Generator Start Switch
- Shoe Storage Rear Wardrobe

ELECTRONICS

- Sony® 32" LED HDTV
- Sony Blu-ray® DVD Player
- Stacked Washer/Dryer
- King Air Mattress (N/A 42G)

OPTIONAL

- Tecma® Silence Plus 2-Button Porcelain Vacuum Flush Toilets
- Shower Caddy Molded into Shower Surround (42G, 45A)
- Double Roller Shades (Manual)

BATHROOM

- Fiberglass Shower w/Molded Seat/Shelf (42G)
- Full Tile Spa Shower (45A)
- Solid Surface Shower Pan, w/Decorative Inlay & Glass Curved Door (45T)
- Polished Solid-Surface Countertop w/Residential Faucet

FURNITURE

- Decorative Dinette & Folding Guest Chairs (N/A w/Face-to-Face Dinette Options)
- Dinette w/Deep-Base Cabinet Storage, File Storage & Slide-Out Laptop Tray
- Polished Solid-Surface Dinette Table w/Slide-Out Extension
- Villa® Ultraleather™ Sofa Bed w/Air Mattress (45A, 45T)
- Villa Ultraleather Sofa w/Removable Arms (45A, 45T)
- Villa Ultraleather Transformer Sofa Bed w/Air Mattress (42G)

OPTIONAL

- Villa Ultraleather Dinette Face-to-Face Dinette Ensemble (45T)

PLUMBING & ELECTRIC

- Aqua-Hot® 450D Multi-Zone Hydronic Heating System w/Pre Heat
- Energy Management System (50Amp)
- Heat Pump on Rear AC Unit
- Heated Water & Holding Tank Compartments
- Holding Tank San-T-Flush™ System
- Pure Sine Wave Inverter/Charger (2800w)
- Inverter & Battery Monitor
- Multi-Point Water Pump Switching
- SensaTank™ Level Monitoring System (Interior & Exterior Monitor)
- Surge Guard™ Electrical System Protection
- (3) Low Profile Roof-Mounted, High-Efficiency 15,000 Btu/h A/C & Bedroom Heat Pump
- Whole-Coach Water Filtration System
- Variable-Speed Water Pump
- Waste Management System (Macerator)

SAFETY

- 3-Point Integrated Seat Belts at Driver & Passenger Seats
- Carbon Monoxide (CO) Detector
- Daytime Running Lights
- Emergency Egress Window
- Fire Extinguisher
- Lighted Exterior Grab Handle
- Smoke Detector

EXTERIOR

GENERAL AMENITIES

- (1)-90° Electric Tray, 1-54" & (1)-36" Tray
- Air Inflation Hose w/Fittings
- Aqua-Hot® Engine Preheating
- Battery Disconnect Switches for House & Chassis
- Cummins® Onan® 10.0 kW Quiet Diesel Generator on Power Slide-Out w/Automatic Start
- Exterior Sidewall TV (Sony® 40" LCD HDTV & JBL AM/FM/CD/DVD)
- Fresh Water Hose (25')
- Maintenance-Free (8) Absorbed Glass Mat 6-Volt Batteries (Group GC2)
- "One Key" System (Luggage/Entry Doors)
- Power Cord Reel (50 Amp)
- Power Bus-Style Double Entry Step
- Power Luggage Door Locks (Select Doors) w/Remote Key Fob
- Power Water Hose Reel
- Protective Front Mask
- Roof Vent Rain Covers
- Solar Charging Panel (95w)
- Strut-Assisted Side-Hinged Luggage Doors
- Undercarriage LED Lighting

OPTIONAL

- King Stationary Satellite System
- Polished Stainless Exterior 6" Trim
- Rear Ladder

AWNINGS, WINDOWS & DOORS

- 33" Avionics Entry Door w/Deadbolt & Pneumatic Air Latches
- Frameless Flush-Mount Windows
- Powered Entry Door Awning
- Roof-Mounted Girard Nova 2-stage Power Awning (2) w/Wind Sensor System & LED Lights
- Slide-Out Topper Awnings
- Window Awnings (Roadside)

CONSTRUCTION

- 5-Layer Flooring w/3" Bead Foam Insulation
- 6-Layer Radius Roof w/Bead Foam Insulation
- Automotive Full-Body Paint w/Sand & Buff High-Gloss Finish
- Central Electrical Panel for 120V/12V AC/DC
- Dense Bead Foam Insulation
- Full Fiberglass Front & Rear Caps
- Gel Coat Fiberglass Exterior Sidewalls w/No Wood Substrate
- Heated Water and Holding Tank Compartments
- Insulated Aluminum Framed & Paneled Luggage Compartment Doors
- One-Piece Molded Fiberglass Roof w/Radius Corners & Seamless Transition to Caps
- Pebble-Finished Fiberglass Basement Lining
- Steel Construction on Front Bulkhead
- Vacu-bond® Sidewall, Roof, Floor & Rear Wall

WEIGHTS, MEASURES, & ENGINE SPECS

ENGINE SPECS	450 - 42G	600 - 45A & 45T
Model	Freightliner® XCM Series	Freightliner® SLM Series
Engine	Cummins® ISL9 with 2-Stage Engine Brake	Cummins® ISX15 w/3-Stage Engine Brake
Torque	1,250 lb-ft @ 1,400 RPM	1,950 lb-ft @ 1,200 RPM
Horsepower	450HP	600 HP
Transmission	Allison® 3000 MH, 6-Speed w/Electronic Shifter	Allison® 4000 MH, 6-Speed w/Electronic Shifter
Alternator	170-Amp Leece-Neville	240-Amp Leece-Neville
Front Tires	315/80R 22.5 Michelin® Radial (2)	315/80R 22.5 Michelin® Radial (2)
Rear Tires	295/80R 22.5 Michelin® Radial (6)	295/80R 22.5 Michelin® Radial (6)

WEIGHTS	42G	45A	45T
GVWR (lbs) ¹	47,000	51,000	51,000
Front GAWR (lbs) ²	17,000	17,000	17,000
Rear GAWR (lbs) ²	20,000	20,000	20,000
Tag Axle GAWR (lbs) ²	10,000	14,000	14,000
GCWR (lbs) ²	62,000	66,000	66,000
Hitch Rating Weight (lbs) ^{††}	15,000	15,000	15,000
Tongue Weight (lbs) [†]	1,500	1,500	1,500
Fuel Capacity (gal)	150	150	150

DIMENSIONS & CAPACITIES	42G	45A	45T
Wheelbase (inches)	302"	302"	302"
Overall Length ⁴	42' 11.5"	44' 11.5"	44' 11.5"
Overall Height (with A/C) ^{5,6}	12' 11"	12' 11"	12' 11"
Overall Width (maximum) ^{5,6}	102"	102"	102"
Interior Height (maximum)	84"	84"	84"
Interior Width (maximum)	96"	96"	96"
Fresh Water Holding Tank (gal)	100	100	100
Grey Water Holding Tank (gal)	60	60	60
Black Water Holding Tank (gal)	40	40	40

LIBERTY® CHASSIS

- Aluminum Wheels (6)
- Anti-Lock Brake System (ABS)
- Automatic 4-Point Dual (Air & Hydraulic) Leveling System
- Automatic Traction Control
- Bendix® Front Wheel Air Disc Brakes
- Custom-Tuned Sachs® Shocks
- 13gal DEF Tank
- Dual Fuel Fill Doors, Locking
- Heavy-Duty Steel Bridge Structure
- Engine Block Heater
- Full Air Brakes w/Automatic Slack Adjusters
- Side Radiator Configuration
- Two 1900 CCA Maintenance-Free Chassis Batteries
- V-Ride® T20 20,000# Rear Suspension
- Ultrasteer™ Tag-Axle Suspension w/ Passive Steering

RIDING ON CONFIDENCE

An exceptionally built motor coach should ride on an equally exceptional foundation. The Liberty Chassis features a Freightliner V-Ride™ rear/drive axle for increased sway control and better coach handling. The heavy-duty steel bridge, along with the Freightliner UltraSteer® B-Series tag axle, provides added strength, increased maneuverability and better handling for confident command of the road ahead.



1



2



3



4

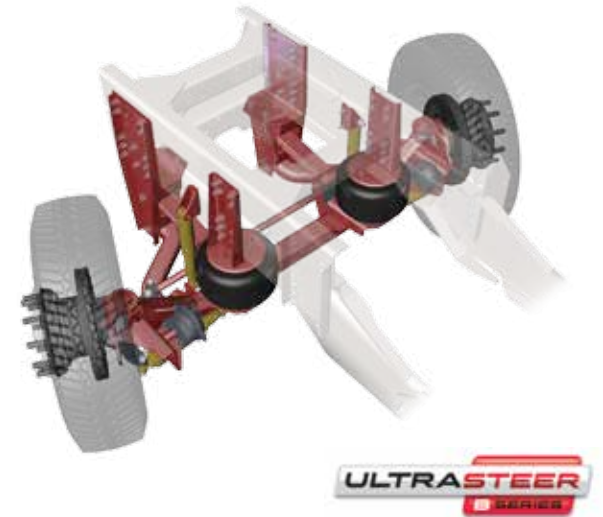


1 THE INDUSTRY'S LARGEST STORAGE
The Liberty Chassis design creates extreme passthrough basement storage space for taller compartments, easier access and loads of room. American Dream also features a one-key system for all storage and power door locks with key fob on select doors.

2 ZF DOUBLE WISHBONE INDEPENDENT FRONT SUSPENSION & PREMIUM SACHS® SHOCKS
The front suspension features up to a 60° wheel cut for unmatched handling backed by the dependability of the ZF name, while custom-tuned Sachs shocks heighten comfort and increase safety.

3 BENDIX® DISC BRAKES
Bendix front wheel air disc brakes deliver uniform stopping power and better steering control, while reducing brake fade and stopping noise.

4 V-RIDE™ SUSPENSION
The V-Ride axle suspension features increased towing capacity, allowing you to carry more gear while providing a durable, comfortable ride.



FREIGHTLINER ULTRASTEER B-SERIES

The UltraSteer B-Series straight-beam axle and wide-track suspension arms provide increased lateral stiffness, offering complete control and precise maneuvering in all conditions.

2018

AMERICAN DREAM

SERVICE BACKED BY AMERICAN PRIDE American Dream is backed by American Coach's RV OWNERCARE warranty program, a limited one-year/15,000-mile coach warranty and three-year/45,000-mile structural warranty, whichever occurs first. And with each warranty comes a network of trustworthy dealers and regional technical centers ready to get you back on the road.



American Coach

The heart of luxury. The soul of freedom.

www.americancoach.com

YOUR LOCAL DEALER

REV GROUP

American Coach is part of REV Recreation Group, a division of REV Group, Inc., a family of 26 industry-leading motor vehicle brands. At REV Group, we innovate, design and build products that connect and protect thousands of people every day—our trusted vehicles are engineered with the utmost rigor and precision to deliver the highest levels of performance, reliability, durability and safety.

IMPORTANT — PLEASE READ: Product information, photography and illustrations included in this publication were as accurate as possible at the time of printing. For further product information and changes, please visit our website at www.AmericanCoach.com or contact your local American Coach dealer. Prices, materials, design and specifications are subject to change without notice. All weights, fuel, liquid capacities and dimensions are approximate. American Coach has designed its recreational vehicles to provide a variety of uses for its customers. Each vehicle features optimal seating, sleeping, storage and fluid capacities. The user is responsible for selecting the proper combination of loads (i.e., occupants, equipment, fluids, cargo, etc.) to ensure that the vehicle's capacities are not exceeded.

DISCLAIMERS

1. GVWR (Gross Vehicle Weight Rating) is the maximum permissible weight of this fully loaded motor home. The GVWR is equal to or greater than the sum of the (UVW) unloaded vehicle weight plus the (OCCC) occupant cargo-carrying capacity.*
2. GAWR (Gross Axle Weight Rating) is the maximum permissible loaded weight a specific axle is designed to carry.
3. GCWR (Gross Combined Weight Rating) is the value specified by the motor home manufacturer as the maximum allowable loaded weight of this motor home with its towed vehicle. Towing and braking capacities may be different. Refer to American Coach and chassis manufacturer's manuals for complete information.
4. Length measured from front bumper to rear bumper (excludes accessories).
5. Excludes safety equipment and awnings.
6. Motor homes feature a body width over 96" which will restrict your access to certain roads. Before purchasing, you should research any state and/or province road laws which may affect your usage. N/A = Not Applicable

† The chassis manufacturer recommends the installation of a supplemental brake control system to activate the brakes on the vehicle or trailer you are towing. Hitch receiver ratings expressed are maximum for the hitch receiver installed and may require the purchase of additional equipment that is dependant on the weight of the towed load. Consult with hitch receiver manufacturer for further information.

‡ The Minimum Towable Load of this vehicle is the available weight capacity, up to GCWR, when the coach is fully loaded to maximum GVWR. However, if the coach is loaded to something less than maximum GVWR, that extra available weight capacity can be added to your Towable Load. For example, if your coach is loaded to 1,000 lbs less than maximum GVWR, your Towable Load increases accordingly. Do not exceed the hitch rating weight, GVWR or GCWR.

* UVW and OCCC are found on the label containing the federal certification tag in each RV.

** Seatbelts and locations are shown in the brochure for display purposes only. Actual numbers and locations will vary by model.

*** All 2017 REV Recreation Group motorhomes include a limited one-year/15,000-mile coach warranty and three-year/45,000-mile structural warranty, whichever occurs first, and is fully transferable for the first 12 months.

CONTACT: To locate a dealer near you, visit our website at www.AmericanCoach.com or call 1-800-322-8216. We can also be contacted at American Coach Customer Care, P.O. Box 31, Decatur, IN 46733.

©2017 REV Group, Inc. Printed in the USA. Inventory Control Number: DREAM18B1, 05/17. Model Year 2018, First Edition.