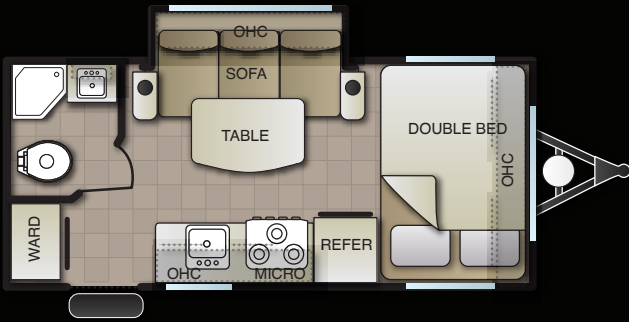
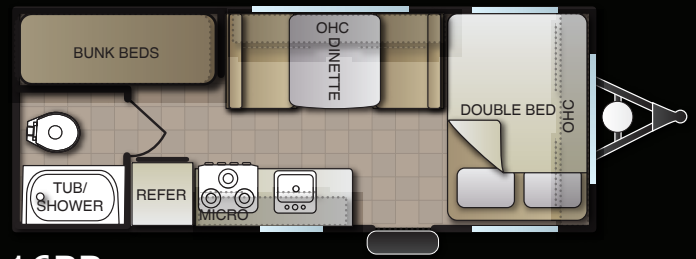


PANTHER

# MINI LITE MODELS



14RBS



16BB



16RB



18RBS

## MINI LITE FEATURES

- 14" Color Matched Wheels
- 3,500 lb. Rated Axle(s)
- 6 Gallon DSI Water Heater
- 6' Refrigerator Double Door
- Aluminum Frame Fiberglass Exterior Walls
- Custom Fit LCI Chassis
- Front Diamond Plate Medal
- Furnace 20,000 BTU
- Holding Tanks
- Insulated Floor Ceiling and Walls
- Kitchen Drawer
- Laminated Counter Tops w/Edge
- LED Lighting
- Metal Ball Bearing Drawer Guides
- Next Level Floor Covering
- One Piece Roof Membrane
- Oven w/High Output Cooktop
- Pass Thru Storage - Where Available
- Pillow Top Mattress
- Radius Baggage Doors
- Radius Entry Door
- Roller Shade Window Coverings
- Sani Flush / Black Tank
- Screwed Together Cabinets
- TV Antenna
- Ultra Light Weight Trailer
- Upgraded Appliances
- Upgraded 3M Graphics

### POPULAR OPTIONS

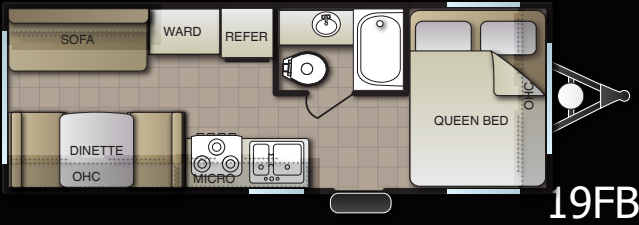
- A/C - 13.5 BTU
- Awning - Power
- Heat Pads
- Microwave Oven
- Sink Cover in Galley
- Skylight in Bathroom
- Spare Tire & Carrier
- Stab Jacks (4)
- Stereo with Speakers
- TV - 24" Livingroom
- TV Bracket Only - Livingroom
- Winterizing Kit
- Oregon State Tag
- Washington State Tag
- CSA Compliance

## MINI LITE SPECIFICATIONS

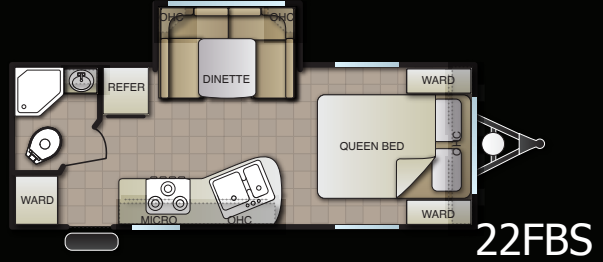
| MODEL | EXT LENGTH | EXT WIDTH | EXT HEIGHT (W A/C) | INT HEIGHT | GWWR  | AXLE WEIGHT | HITCH WEIGHT | UVW   | PAYLOAD | FRESH WATER | GRAY WATER | BLACK WATER |
|-------|------------|-----------|--------------------|------------|-------|-------------|--------------|-------|---------|-------------|------------|-------------|
| 14RBS | 19'5"      | 84"       | 11'                | 78"        | 4,000 | 2,305       | 582          | 2,887 | 1,113   | 25 GAL      | 15 GAL     | 15 GAL      |
| 16BB  | 20'10"     | 84"       | 11'                | 78"        | 3,650 | 2,640       | 458          | 3,098 | 552     | 25 GAL      | 15 GAL     | 15 GAL      |
| 16RB  | 20'10"     | 84"       | 11'                | 78"        | 3,650 | 2,655       | 402          | 3,057 | 593     | 25 GAL      | 15 GAL     | 15 GAL      |
| 18RBS | 22'5"      | 84"       | 11'                | 78"        | 7,000 | 3,675       | 346          | 4,021 | 2,979   | 25 GAL      | 15 GAL     | 15 GAL      |

Unloaded vehicle weight (UVW) information is intended as a guide only and does not include water, fluids or popular options. Actual weight may vary. Payload capacity does not include the weight of water, fluids, or popular options. Weights and capacities are approximate and are subject to change without notice.

# 8' WIDE XTRALITE MODELS



19FB



22FBS



24IKS



24RBS



26DB



26DBS

## XTRALITE FEATURES

### INTERIOR

- 78" Ceilings
- A/C 13.5 BTU - Nonducted
- Back Splash - Galley
- Cooktop w/Flush Glass Cover
- 6' Double Door Refrigerator
- Furnace - 20,000 BTU
- LED Lighting
- Large Oven
- Laminated Counter Tops w/Edge
- Microwave Oven
- Pillow Top Mattress
- Roller Shade Window Coverings
- Sink Cover
- Stereo/DVD/Bluetooth
- Upgraded Appliances

### EXTERIOR

- 20 lb. Bottles (2) w/Cover
- 6 Gallon Gas DSI Water Heater
- Awning - Power
- Custom Colored Skirts
- Custom Colored Wheels
- Front Diamond Plate Rockguard - Black
- Laminated Fiberglass Exterior
- LED Lighting
- One Piece Roof Membrane
- Sani-Flush / Black Tank
- Spare Tire & Carrier
- Stab Jacks (4)
- TV Antenna w/Cable
- Upgraded Appliances

### POPULAR OPTIONS

- Ducted A/C
- Enclosed Tanks
- Exterior Ladder
- Front Window w/Rockguard
- Glass Enclosure
- Heat Pads
- Outside Shower
- Power Stab Jacks / IPO Manual
- Power Tongue Jack
- Skylight in Bathroom
- TV Bracket Only - Livingroom
- TV LCD Livingroom 24"
- Tub/Shower Surround
- Winterizing - "Anti Burst"
- Oregon State Tag
- Washington State Tag
- CSA Compliance

## XTRALITE SPECIFICATIONS

| MODEL | EXT LENGTH | EXT WIDTH | EXT HEIGHT (W A/C) | INT HEIGHT | GVWR | AXLE WEIGHT | HITCH WEIGHT | UVW | PAYLOAD | FRESH WATER | GRAY WATER | BLACK WATER |
|-------|------------|-----------|--------------------|------------|------|-------------|--------------|-----|---------|-------------|------------|-------------|
| 19FB  | 23'3"      | 96"       | 11'                | 78"        | TBD  | TBD         | TBD          | TBD | TBD     | 44 GAL      | 35 GAL     | 35 GAL      |
| 22FBS | 25'7"      | 96"       | 11'                | 78"        | TBD  | TBD         | TBD          | TBD | TBD     | 44 GAL      | 35 GAL     | 35 GAL      |
| 24IKS | 29'        | 96"       | 11'                | 78"        | TBD  | TBD         | TBD          | TBD | TBD     | 44 GAL      | 35 GAL     | 35 GAL      |
| 24RBS | 27'10"     | 96"       | 11'                | 78"        | TBD  | TBD         | TBD          | TBD | TBD     | 44 GAL      | 35 GAL     | 35 GAL      |
| 26DB  | 29'1"      | 96"       | 11'                | 78"        | TBD  | TBD         | TBD          | TBD | TBD     | 44 GAL      | 35 GAL     | 35 GAL      |
| 26DBS | 30'11"     | 96"       | 11'                | 78"        | TBD  | TBD         | TBD          | TBD | TBD     | 44 GAL      | 35 GAL     | 35 GAL      |

Unloaded vehicle weight (UVW) information is intended as a guide only and does not include water, fluids or popular options. Actual weight may vary. Payload capacity does not include the weight of water, fluids, or popular options. Weights and capacities are approximate and are subject to change without notice.

18RBS



18RBS



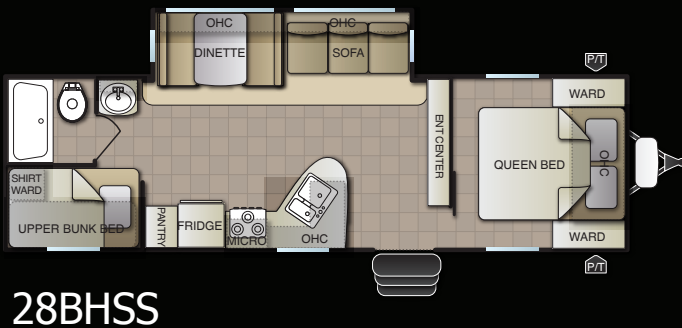
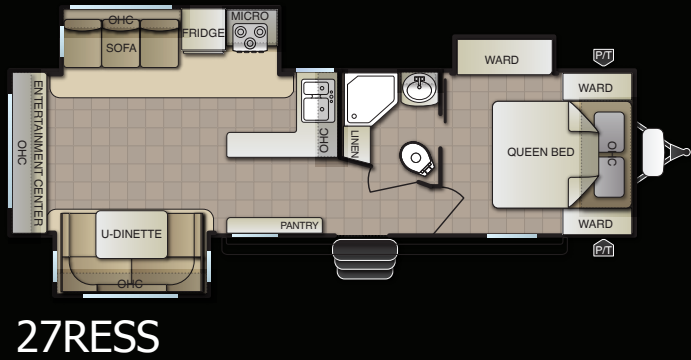
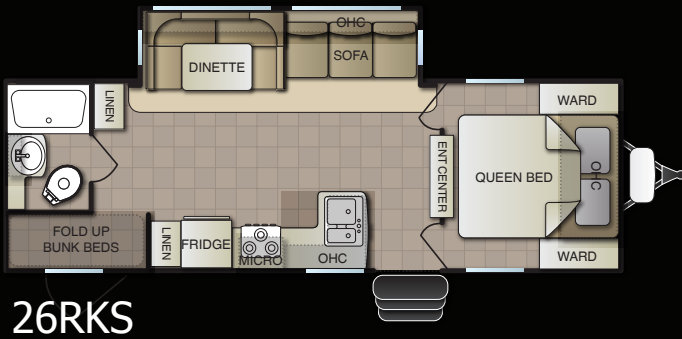
18RBS



18RBS



# 8' WIDE WIDELITE MODELS



## WIDELITE FEATURES

### INTERIOR

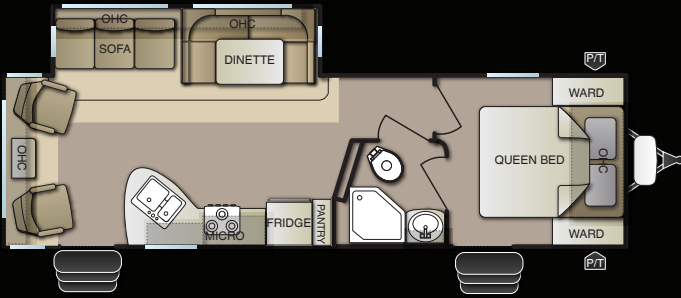
- 81" Interior Height
- A/C 13.5 BTU - Ducted
- Back Splash - Galley
- Cooktop w/Flush Glass Cover
- 6' Double Door Refrigerator
- Furnace - 30,000 BTU
- Large Oven
- LED Lighting
- Microwave Oven
- Pillow Top Mattress
- Roller Shade Window Coverings
- Shower / Tub Surround
- Sink Cover
- Skylight in Bathroom
- Solid Surface Counter Tops/Galley
- Stereo/DVD/Bluetooth
- Upgraded Appliances

### EXTERIOR

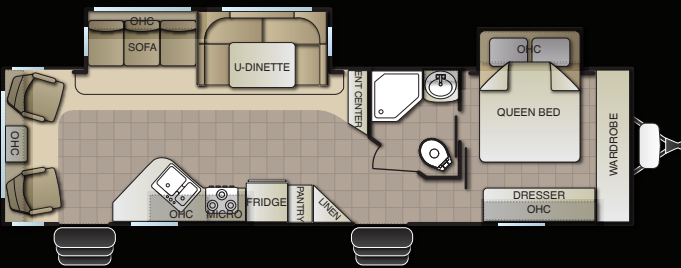
- Aluminum Frame Construction
- Awning - Power
- Custom Built I-Beam Chassis
- DSI Water Heater
- Dual LPG Bottles w/Cover
- Fender Skirts - Black
- Front Diamond Plate Metal - Black
- Large Holding Tanks
- LED Lighting
- Painted Wheels - Color Matched
- Sani-Flush / Black Tank
- Seamless One Piece Roof
- Spare Tire & Carrier
- Stab Jacks (4)
- TV Antenna w/Cable
- Upgraded 3M Graphics

### POPULAR OPTIONS

- A/C 15.0 BTU Upgrade
- Aluminum Wheels
- Enclosed Tanks
- Exterior Ladder
- Exterior Swing Out Handle
- Front Window w/Rockguard
- Glass Enclosure
- Heat Pads
- Outside Shower
- Power Stab Jacks / IPO Manual
- Power Tongue Jack
- TV LCD L/R 24"
- TV LCD L/R 32"
- Winterizing - "Anti Burst"
- Oregon State Tag
- Washington State Tag
- CSA Compliance



27RLSS



32DBSS

## WIDELITE SPECIFICATIONS

| MODEL  | EXT LENGTH | EXT WIDTH | EXT HEIGHT (W A/C) | INT HEIGHT | GVWR  | AXLE WEIGHT | HITCH WEIGHT | UVW   | PAYLOAD | FRESH WATER | GRAY WATER | BLACK WATER |
|--------|------------|-----------|--------------------|------------|-------|-------------|--------------|-------|---------|-------------|------------|-------------|
| 26RKS  | 28'9"      | 96"       | 11'5"              | 78"        | TBD   | TBD         | TBD          | TBD   | TBD     | 44 GAL      | 35 GAL     | 35 GAL      |
| 27RESS | 32'11"     | 96"       | 11'5"              | 78"        | 9,900 | 6,340       | 674          | 6,814 | 3,086   | 44 GAL      | 35 GAL     | 35 GAL      |
| 27RLSS | 32'7"      | 96"       | 11'5"              | 78"        | 9,900 | 6,125       | 744          | 6,669 | 3,231   | 44 GAL      | 35 GAL     | 35 GAL      |
| 28BHSS | 31'5"      | 96"       | 11'5"              | 78"        | TBD   | TBD         | TBD          | TBD   | TBD     | 44 GAL      | 35 GAL     | 35 GAL      |
| 30RKSS | 33'9"      | 96"       | 11'5"              | 78"        | TBD   | TBD         | TBD          | TBD   | TBD     | 44 GAL      | 70 GAL     | 35 GAL      |
| 32DBSS | 35'5"      | 96"       | 11'5"              | 78"        | TBD   | TBD         | TBD          | TBD   | TBD     | 44 GAL      | 35 GAL     | 35 GAL      |

Unloaded vehicle weight (UVW) information is intended as a guide only and does not include water, fluids or popular options. Actual weight may vary. Payload capacity does not include the weight of water, fluids, or popular options. Weights and capacities are approximate and are subject to change without notice.

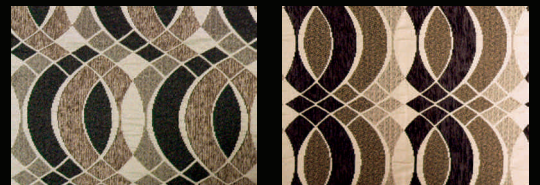


**Pacific Coachworks** is committed to providing the highest quality travel trailers, fifth wheels, and toy haulers at an unsurpassed value. We are dedicated to establishing lasting partnerships with trusted RV dealers, vendors, and suppliers, all of which are equally committed to conducting business with your best interests in mind. Our team is focused on exceeding customer expectations by providing the highest level of customer support and service.

Pacific Coachworks • 3411 N. Perris Blvd., Perris, CA 92571  
 (951) 686-7294 • [www.pacificcoachworks.com](http://www.pacificcoachworks.com)

All information included in this brochure is the latest at the time of publication. Pacific Coachworks reserves the right to make changes and to discontinue at any time, without notice, prices, colors, materials, equipment, accessories, specifications, models, and packages, without incurring any obligations to make the same or similar changes to trailers. All vehicles built by Pacific Coachworks, Inc. include a one year factory warranty.

#### DECOR



# Pacific Coachworks™