



CHARLESTON





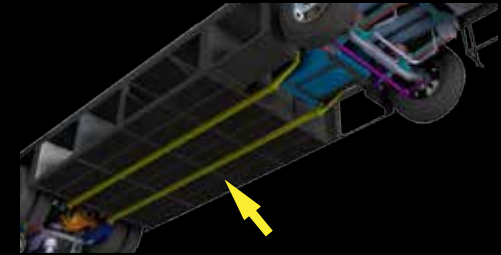
*Always obey a bridges load capacity

TRU-BRACE

Forest River Diesel Chassis Upfit Support System



Your home on wheels needs a solid foundation, that is why your Forest River Diesel Chassis is upfit by MORryde.



Structure built on a fixture table for optimum leveling and squareness. Laser cutting +/- 0.010. Bending within +/-01 degree.

ORIGINAL CHASSIS

UPFIT WITH THE TRU-BRACE™ REINFORCED FRAME



Aluminized Steel Side Skirts *prevent rust* and *prolong the life* of the structure

Side skirts assembled as one piece to *minimize seams* and *prevent rust creep*

Upgraded from molded plastic, the steel bays hold *more weight* for your gear

The Tru-Brace™ reinforcements *strengthen the frame*, *reduce chassis flex* and *minimize the springboard effect* that whips the back of your unit up and down over rough roads.

CHARLESTON

A TRUE OVERACHIEVER.

INSIDE AND OUT. Every detail of the Charleston interior is as carefully considered as the exterior appointments. The supple surroundings are highlighted by leather couches and captains chairs, matching accents and spacious seating. The kitchen with its True Induction® electric cooktop and optional stainless steel dishwasher are just a few of the features that put the Charleston at the forefront of Class A innovation.





430BH | BLACK PEARL INTERIOR
Charleston proudly features **SONY** and **BOSE** components.



430BH | BLACK PEARL INTERIOR
Charleston proudly features **SONY** and **BOSE** components.

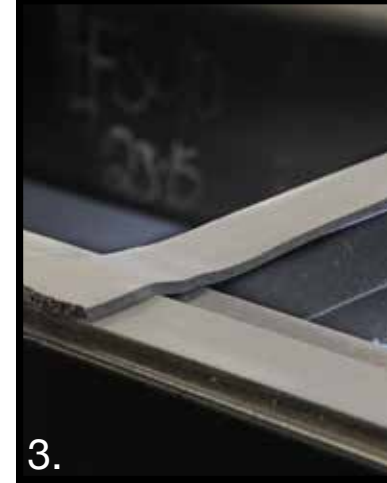


430BH

EVERYTHING HAS IT'S PLACE.

ESPECIALLY FRIENDS AND FAMILY. The Charleston 430BH, like the 430RB, is built for comfort and convenience. It's large slides open up to create a spacious, comfortable living area that is great for entertaining friends and family. High end features like the finished ceiling and stainless steel appliance package are residential hallmarks that showcase our commitment to quality. With our bunk feature, friends and family are sure to enjoy quiet comfort during their stay.

CONSTRUCTION BENEFITS



Charleston Construction Benefits:

1. For quality assurance all construction takes place in a single facility. 2. Auxiliary air chuck on 2" insulated firewall. 3. Neoprene isolator between chassis and floor eliminates vibration. 4. Steel entrance steps insulated with plywood. 5. 3" block foam insulated floor structure. 6. Easy interior dash access. 7. Auxiliary LP hook-up on curb side. 8. All firewall openings sealed with grommets to eliminate electrical shorts. 9. Minimal connections on all water lines. 10. Our fiberglass insulated dash is integrated with the front cap.

EXTERIOR FEATURES



A. View it outside. The exterior entertainment center in the sidewall is the perfect way to tailgate or simply watch the big game at your favorite destination. The exterior entertainment features a **SONY** 40" LCD/HDTV and radio.

B. Convenient access. The easy to use electric generator slide tray allows for easy and convenient access to the Charleston's 10KW power generator.



C. Easy to understand. Charleston's automotive style electrical station makes troubleshooting quick and easy.

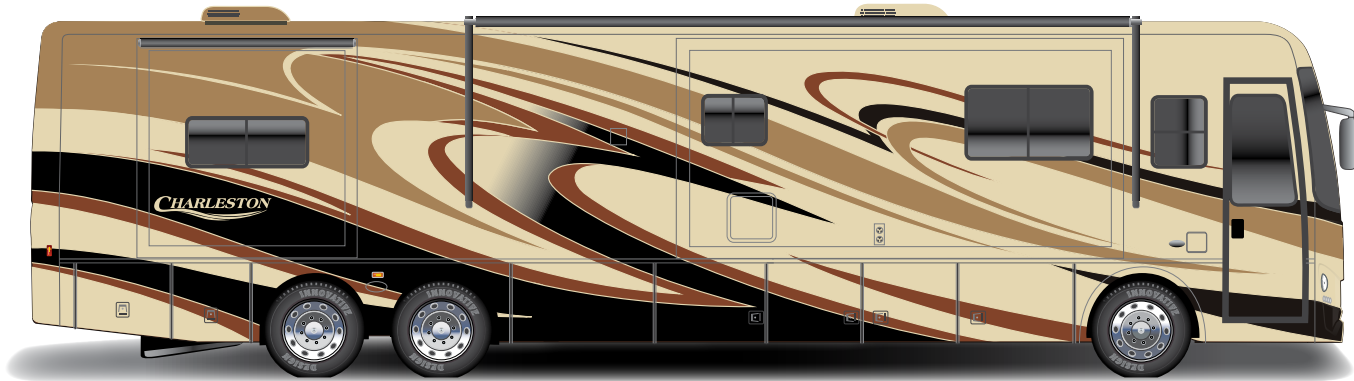
D. Simply innovative. The Charleston's zoned, central water distribution system allows uninterrupted showers and eliminates numerous elbow connections.



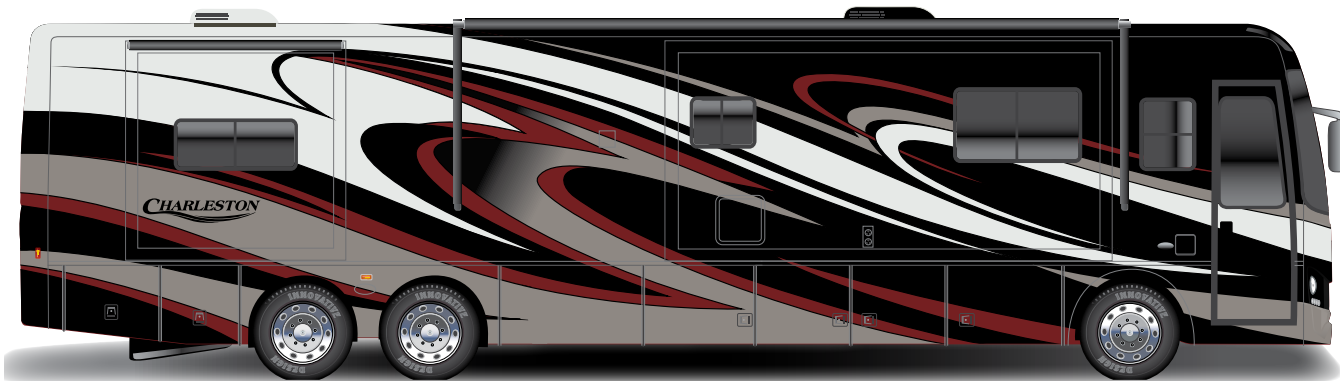
E. Cavernous. Charleston's side opening exterior storage doors allow for greater accessibility and easy access to insulated, steel-cage protected cargo areas. Our above-floor slide-out system allows for increased storage space below.

F. Secure it. The keyless entry and lighted entry assist handle provide convenience, comfort and safety when entering your Charleston.

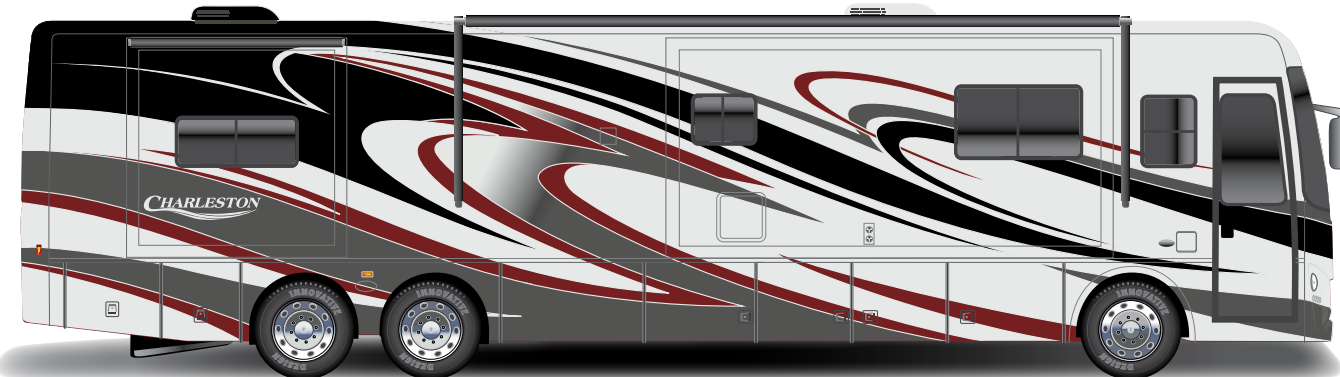
EXTERIOR PAINT OPTIONS



CARAMEL ICE



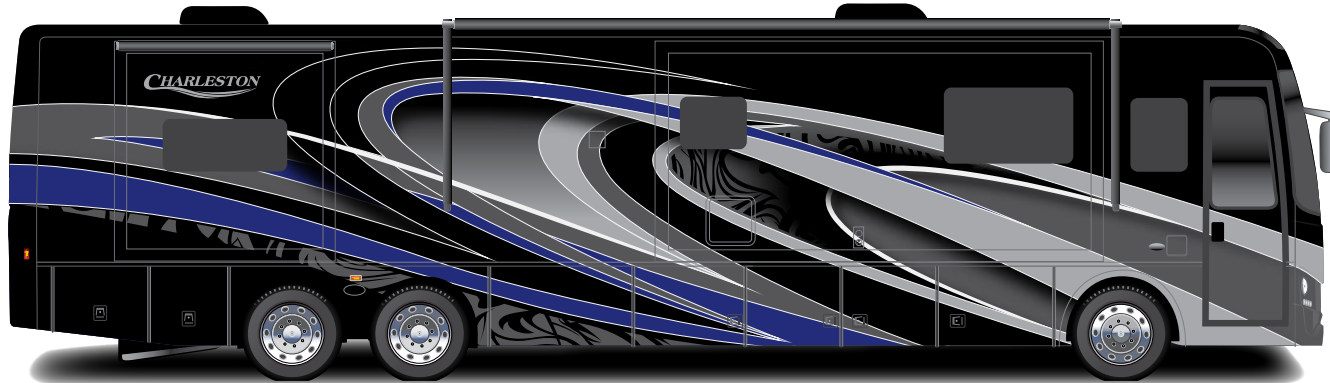
MIDNIGHT FLAME



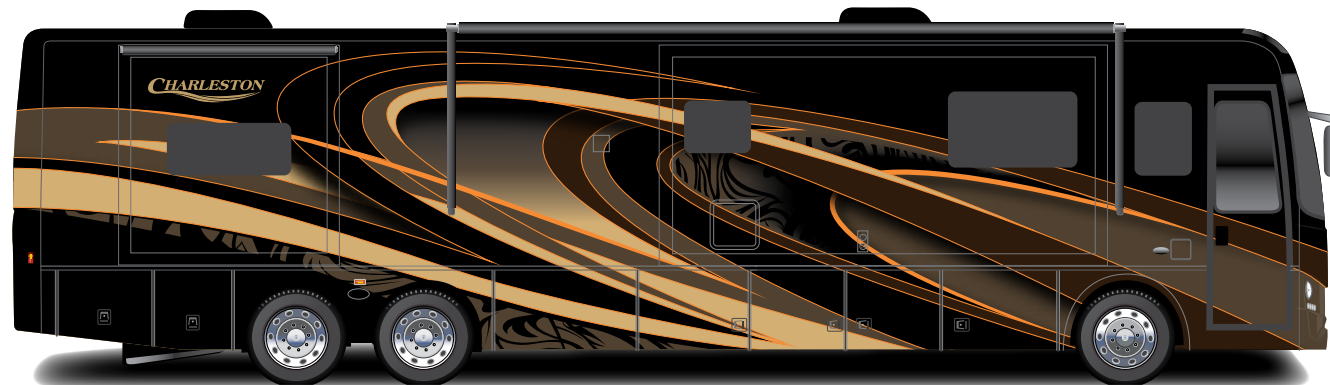
CINNAMON GLAZE



EXTERIOR PAINT UPGRADE OPTIONS



HONORABLE KNIGHT PAINT UPGRADE OPTION



SAFARI PAINT UPGRADE OPTION



DECOR OPTIONS



SADDLE

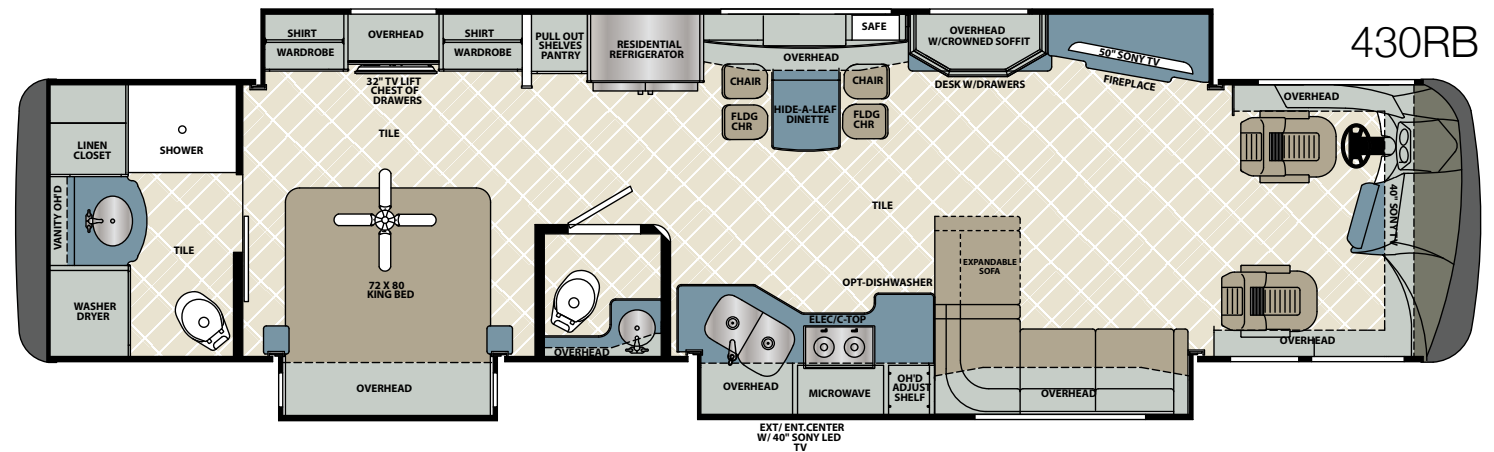
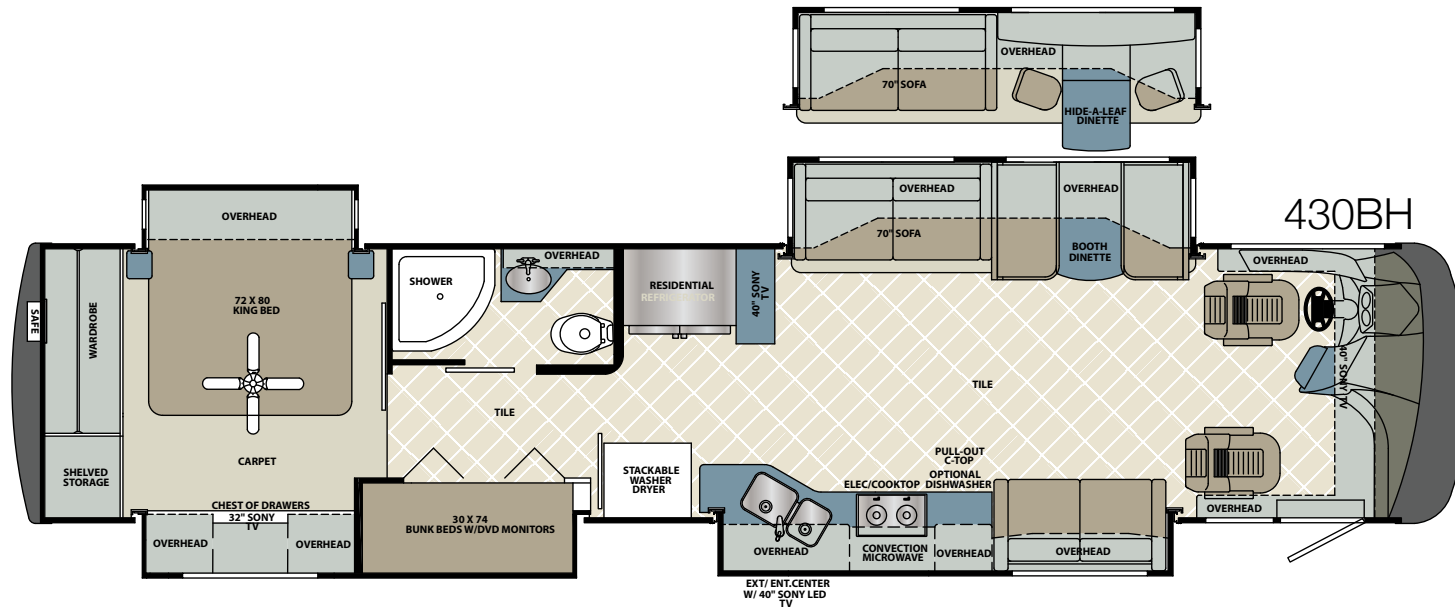


CASHMERE



TWILIGHT GLIMMER/BLACK PEARL

FLOORPLANS | SPECIFICATIONS



Floorplan	Length (Feet)	GVWR (Lbs.)	GCWR (Lbs.)	GAWR Front (Lbs.)	GAWR Rear (Lbs.)	GAWR TAG (Lbs.)	Wheelbase (Inches)	Height* (Feet)	Width* (Inches)	Basement storage* (Cu. Ft.)	Awning (Feet)	Fresh Tank (Gal.)	Gray Tank (Gal.)	Black Tank (Gal.)	LP Tank	Furnace (BTU's)	Hot Water
430BH	42' 11"	44,320	59,320	14,320	20,000	10,000	266"	12' 9"	100"	185.75'	14' 0"	86	66	42	24.5	50,000	Continuous
430RB	42' 11"	44,320	59,320	14,320	20,000	10,000	262"	12' 9"	100"	185.75'	15' 0"	86	66	42	24.5	50,000	Continuous

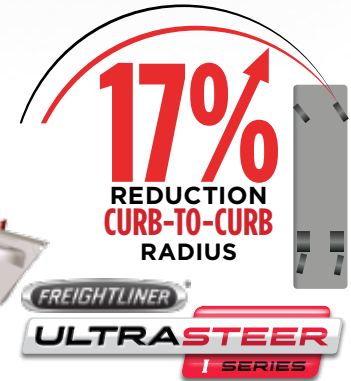
Please see back cover for more information on weights.
*Approximate



The XC-R chassis offers you greater horsepower and torque options. The design features a lowered rear frame rail, allowing for a flat floor throughout the entire coach and more floorplan configurations.

Cummins ISL9 450HP @ 2100RPM, 2200GOV RPM,
1250 LB/FT @ 1400RPM tires

Ingersoll-IMT F22 10,000# Drop Center Tag Axle



The optional UltraSteer I-Series features an independent suspension on the tag axle. This provides enhanced overall ride quality and stability, with comparable weight capacity and turning angle to the B-Series.

Michelin XZA3+ 275/80R22.5 16 ply radial tires

Dual Fuel Fill

Allison 3000MH 6-speed transmission

22.5" Polished Aluminum Wheels



Introducing the V-Ride™ Rear RV Suspension System from FCCC. the first ever single axle suspension rated at 21,000 pounds and higher, it's designed for today's demanding luxury motorhome owners- who want the ability to carry more gear, the freedom to equip their interiors with premium amenities, and a comfortable, confident driving experience.

Bendix ADB22X Air Disc Front Brakes

FLOORPLAN	430BH	430RB		430BH	430RB		430BH	430RB
<u>AUTOMOTIVE & COCKPIT STANDARDS</u>				<u>CONSTRUCTION & EXTERIOR STANDARDS</u>			<u>ELECTRICAL STANDARDS</u>	
Freightliner XCR Raised Rail Chassis	S	S	Multiple auxiliary charging ports at dash	S	S	PTL Entrance door with deadbolt	S	S
Cummins ISL9 450HP @2100RPM, 2200GOV RPM, 1250 LB/FT @ 1400RPM	S	S	Ingersoll-IMT F22 10,000# drop center tag axle	S	S	Auxiliary air chuck (front firewall)	S	S
Allison 3000MH 6-speed transmission	S	S	Adjustable suspended pedals with Teleflex flush mount accelerator	S	S	Auxiliary LP supply, quick connect (passenger side)	S	S
120V Engine Heater 1000W	S	S	Bendix ADB22X Air Disc Front Brakes	S	S	Full length mud flap with chrome Forest River name	S	S
22.5" Polished Aluminum Wheels	S	S	<u>CONSTRUCTION & EXTERIOR STANDARDS</u>			Slide tray in basement compartment	S	S
Michelin XZA3+ 275/80R22.5 16 ply radial tires	S	S	Fiberglass front and rear caps	S	S	<u>ELECTRICAL STANDARDS</u>		
Trailer Hitch Capacity, 15,000 LBS	S	S	Full body painted exterior (4X clear coat)	S	S	50A service with auto transfer switch	S	S
Allison electronic push button shifter	S	S	Four (4) point fully auto hydraulic leveling system w/ auto air dump	S	S	10kW Onan diesel generator w/electric slide tray	S	S
100 gallon, locking dual fill fuel tank	S	S	Morryde steel basement structure	S	S	Electronic battery disconnect switch	S	S
13 Gallon DEF Tank	S	S	Tru-Brace chassis support system	S	S	Remote generator start switch on dash and in Bedroom	S	S
LCD engine message center	S	S	Rust resistant aluminized steel chassis skirts	S	S	LED Ceiling light package	S	S
Day time running lights	S	S	Diamond Shield front mask protective film	S	S	Driver and Passenger LED ceiling map lights	S	S
7-Pin tow power connector	S	S	Electric generator Slide	S	S	Cosmetic bathroom lighting	S	N/A
18.7 CFM air compressor	S	S	1 Piece fiberglass Roof	S	S	Decorative wall and dinette lighting where applicable	S	S
Farr Eco-air cleaner	S	S	Top-mount, remote, exterior, heated mirrors with cameras	S	S	Auxiliary engine start switch at dash	S	S
Air filter restriction indicator	S	S	Frameless dual pane, dark tint windows	S	S	Individual reading lights bed overhead	S	S
Fuel/water separator	S	S	Automotive foam and Ziebart seal undercoating	S	S	2000w pure sine inverter-converter	S	S
Brake line air dryer with heater	S	S	Carefree power door awning	S	S	Euro style 12v Switches	S	S
Automatic, heated moisture ejectors	S	S	Carefree Freedom patio box awning w/LED lighting and auto retract with direct response electronics	S	S	Auto generator start module	S	S
Power steering	S	S	Carefree slide toppers with covers	S	S	Dimmer control living room and bedroom ceiling lights	S	S
Washer/wiper with intermittent function	S	S	Full height strut assisted compartment doors w/full pass through storage	S	S	Four (4) Six volt deep cycle house batteries	S	S
160 amp alternator	S	S	"One Key" system, ext-compartment, entry door & fuel fill doors	S	S	Two (2) Master electric convenience shut off switches	S	S
Two (2) Maintenance Free 1900CCA batteries	S	S	Quiet integrated A/C intake/ducting roof system	S	S	30" Auto/Power entrance step	S	S
Full air ABS brakes w/ auto slack adjuster	S	S	Crowned and layered vacuum bonded fiberglass roof	S	S	Patio light	S	S
C-Brake by Jacobs with LOW/OFF/HI brake dash switch	S	S	Vacuum bonded 3" floor with tubular steel frame	S	S	Easy access fuse/load centers	S	S
Telescopic/tilt steering wheel	S	S	Gel coated vacuum bonded aluminum tube with fiberglass and block foam insulation sidewalls	S	S	Dimmer control living room & bedroom ceiling lights	S	S
Neway air suspension front and V-Ride rear	S	S	1/2" Structure wood flooring	S	S	Docking lights	S	S
Sachs custom tuned shock absorbers	S	S	Block foam polystyrene insulation	S	S	Pop up desk dual USB 110v receptacle at desk	N/A	S
55 degree wheel cut	S	S	33" Entryway	S	S	Energy management system with inverter assist	S	S
Auto air suspension deflation system	S	S	In wall channeled drains for A/Cs	S	S	Keyless Entry	S	S
Cross flow, rear mounted radiator	S	S	Steel basement construction	S	S	35' Power cord with electric reel	S	S
Transmission oil cooler	S	S	Tubular steel firewall with polystyrene insulation	S	S	<u>PLUMBING STANDARDS</u>		
5 year / 100,000 mile coolant (some maintenance required)	S	S	Shower skylight	S	S	Variable speed constant pressure water pump	S	S
V.I.P. Smart Wheel, 4-Spoke 18" premium burl wood steering wheel	S	S	Lighted exterior assist handle	S	S	Bath - Solid surface under mount sink	S	S
Power stepwell cover	S	S	Two piece rear ladder	S	S	Kitchen - Stainless steel under mount sink	S	S
Entry assist handle	S	S	84" interior ceiling height	S	S	Whole house water filter	S	S
Electronic cruise control with high idle	S	S				Black water tank flush system	S	S
						Kitchen-High rise single lever faucet with pull-out sprayer	S	S

	430BH	430RB		430BH	430RB		430BH	430RB
Double lever lavatory faucets	S	S	Blu-ray DVD Player	S	S	Installed wall safe	S	S
One piece fiberglass shower with glass door	S	S	Ext/entertainment center in sidewall: 40" TV and Radio with auxiliary jack	S	S	<u>APPLIANCE STANDARDS</u>		
Porcelain china stool	S	S	Two pair dash stereo speakers	S	S	15,000 BTU with heat pump (front/rear), 13,500 BTU (middle) low profile A/C's	S	S
Techma-macerator stool (rear bath)	N/A	S				Holding tank heat pads	S	S
Clean easy exterior shower hose	S	S	<u>INTERIOR STANDARDS</u>			Continuous flow tankless gas hot water heater	S	S
Individual zoned hot/cold manifold water supply system	S	S	Polished porcelain tile	S	S	30,000 BTU Front furnace	S	S
360 Siphon vent caps	S	S	Native Hardwood Cabinetry	S	S	20,000 BTU Rear furnace	S	S
<u>DRIVER/PASSENGER AREA STANDARDS</u>			Raised panel hardwood cabinet doors	S	S	30" OTR convection microwave oven	S	S
One piece windshield	S	S	Hidden hinges and bar pull style cabinet hardware	S	S	Residential French door refrigerator with ice maker	S	S
Power front night and day shade	S	S	Carpeted living room and dining slide-outs	S	S	True-Induction electric cooktop	S	S
Manual passenger & driver windows day/night shade	S	S	Hardwood lighted window valances	S	S	Fan in bathrooms with built in thermostat control	S	S
Dash burl panels	S	S	Wardrobe shoe storage rack	S	N/A	Fantastic fan in galley with wall thermostat and rain sensor	S	S
Fog Lights	S	S	Bedroom carpet with padding	S	N/A	Stackable washer/dryer	S	S
Dash radio with integrated color back-up and side camera pkg with navigation	S	S	Villa sofa (with hide a bed)	S	N/A	Electric fireplace	S	S
Wrap around cockpit with nine (9) gauge instrument cluster	S	S	Villa expandable sofa (with hide a bed)	N/A	S	Basement freezer	S	S
Driver 360 degree swivel and recline seat w/6-Way power adjustment	S	S	Villa love seat	S	N/A	Central vacuum	S	S
Passenger 360 degree swivel and recline set w/power 6-Way adjustment and power footrest	S	S	Polished solid surface kitchen/dinette c-tops with flush sink covers	S	S	<u>SAFETY STANDARDS</u>		
Soft touch Flexsteel driver/passenger seat	S	S	Polished solid surface backsplash with tile inserts kitchen	S	S	110 GFI protected circuits	S	S
Passenger seat console (vinyl wrapped)	S	S	Polished solid surface c-tops throughout	S	S	Carbon monoxide detector	S	S
Lighted step well	S	S	Soft close ball bearing drawer guides in kitchen	S	S	LP gas detector w/auto tank shutoff	S	S
Two (2) Defroster fans with high and low settings	S	S	Full extension ball bearing metal drawer guides	S	S	Smoke alarm	S	S
Driver/passenger cup holders	S	S	Galley storage compartment for range and sink covers	S	S	Egress window	S	S
Automotive dash AC/Heater with deluxe controls	S	S	Kitchen Pantry	N/A	S	Surface mounted fire extinguisher	S	S
Tile with solid surface edged step well	S	S	Pull out kitchen countertop	S	S	<u>CHASSIS OPTIONS</u>		
Premium Freightliner gauge package w/chrome bezels	S	S	Bi-fold doors/pantry, bunk beds	S	N/A	UltraSteer tag axle	O	O
<u>ENTERTAINMENT STANDARDS</u>			Free-standing hide-a-leaf dinette with hutch and four chairs	N/A	S	<u>INTERIOR OPTIONS</u>		
50" SONY LED TV, living room	N/A	S	"Soft Touch" dream booth dinette with storage underneath	S	N/A	Free-standing hide-a-leaf dinette w/ hutch and four chairs	O	N/A
40" SONY LED TV, living room with slide	S	N/A	"Soft Touch" padded ceiling with living room hardwood feature	S	S	Executive dark cherry wood	O	O
32" SONY LED TV, bedroom	S	S	Roller style day/night shades	S	S	<u>APPLIANCE/ELECTRONIC OPTIONS</u>		
40" SONY LED TV, front dash overhead	S	S	Large bedside wardrobe	S	N/A	Trav'ler (Winegard) satellite antennae (DirectTV-US) (Shaw-Canada)	O	O
BOSE premium sound bar system with powered subwoofer	S	S	Dresser drawers and wardrobe type cabinets	S	S	Fisher/Paykel stainless steel dishwasher	O	O
Two flip down LCD monitors with DVD and AV inputs (1 per Bunk)	S	N/A	72"x 80" Select Comfort air, king bed with bedspread and decorative pillows	S	S			
Trav'ler (Winegard) satellite prep.	S	S	Hardwood headboard with padded insert	S	S			
Cable TV prep	S	S	Contoured overhead cabinets in slide out rooms	S	S			
Hi-Definition digital TV antenna with signal strength indicator	S	S	Bed night stands	S	S			
High definition Cat 6 matrix signal distribution	S	S	Mirrored medicine cabinets	S	S			
			Towel bar, toilet paper holder and towel ring	S	S			
			Bedroom 2 speed ceiling fan	S	S			



24/7 EMERGENCY ROADSIDE ASSISTANCE

For a worry-free ownership experience Forest River includes one

year of Coach-Net RV Technical & Roadside Assistance with each RV purchase. Whether new to the RV lifestyle or an experienced RV enthusiast, Forest River owners have 24/7 access to technical, operational and emergency road service coverage throughout the US & Canada. Coach-Net's fast, dependable service is just a phone call away.

Coach-Net®

RV Technical & Roadside Assistance



PRE-DELIVERY INSPECTION FACILITY

20,000 square feet of quality assurance. The bare essentials for a premium product. This state-of-the-art facility gives immediate daily feedback to production for quality assurance in every unit built.



Forest River, Inc. encourages our customers to purchase their Forest River products whenever possible for the following reasons:

- 1) Forest River, Inc. dealers are independently owned and operated businesses so priority service and scheduling is at their discretion and is often provided to customers that purchased their unit at that dealership.
- 2) Purchasing locally allows customers to establish meaningful relationships with a dealer, enhancing the RV experience through assistance with product questions, user tips or RV regulations for your state or country, and much more!
- 3) Canadian customers must meet requirements to bring an RV purchased out of the country to their home. These requirements may involve additional inspections and certifications, taxes and fees. Your local Canadian Dealer is a professional at meeting these requirements.
- 4) Scheduling timely warranty repairs and adjustments through a local dealership provides far greater flexibility and convenience to you, the customer!

It is the goal of Forest River, Inc. that all of our RV owners fully enjoy the RV experience and that customer satisfaction meets or exceeds their expectations!

GVWR (Gross Vehicle Weight Rating) - is the maximum permissible weight of the unit when fully loaded. It includes all weights, inclusive of all fluids, occupants, cargo, optional equipment and accessories. For safety and product performance do NOT exceed the GVWR.

GCWR (Gross Combined Weight Rating) - Is the maximum permissible loaded weight of your motor home and any towed trailer or towed vehicle. Actual GCWR of this vehicle may be limited by the sum of the GVWR and the installed hitch receiver maximum capacity rating; see hitch rating label for detail.

GAWR (Gross Axle Weight Rating) - is the maximum permissible weight, including cargo, fluids, optional equipment and accessories that can be safely supported by each axle.

UVW (Unloaded Vehicle Weight)* - is the typical weight of the unit as manufactured at the factory. It includes all weight at the unit's axle(s), including full fuel, all fluids and LP Gas. The UVW does not include cargo, fresh potable water, additional optional equipment or dealer installed accessories.

*Estimated Average based on standard build optional equipment.

CCC (Cargo Carrying Capacity)** - is the amount of weight available for fresh potable water, cargo, passengers, additional optional equipment and accessories. CCC is equal to GVWR minus UVW. Available CCC should accommodate fresh potable water (8.3 lbs per gallon). Before filling the fresh water tank, empty the black and gray tanks to provide for more cargo capacity.

** Estimated average based on standard build optional equipment

Each Forest River RV is weighed at the manufacturing facility prior to shipping. A label identifying the unloaded vehicle weight of the actual unit and the cargo carrying capacity is applied to every Forest River RV prior to leaving our facilities.

The load capacity of your unit is designated by weight, not by volume, so you cannot necessarily use all available space when loading your unit.

Actual towing capacity is dependent upon your particular loading and towing circumstances, which includes the GVWR, GAWR and GCWR as well as adequate trailer brakes. Please refer to the Operator's Manual of your vehicle for further towing information.

©Charleston- a division of Forest River Inc.
A Berkshire Hathaway company



Learn More
Scan this barcode using a QR Reader on your smart phone to learn more about Forest River.



A Berkshire Hathaway company.

Forest River Diesel Division
1800 W. Hively Ave.
Elkhart, IN 46517
(574) 522-3693
www.forestriverinc.com
www.forestriveraccessories.com

FREE MEMBERSHIP
to Forest River Owners' Group

www.forestriverfrog.com



All information contained in this brochure is believed to be accurate at the time of publication. However, during the model year, it may be necessary to make revisions and Forest River, Inc., reserves the right to make all such changes without notice, including prices, colors, materials, equipment and specifications as well as the addition of new models and the discontinuance of models shown in this brochure. Therefore, please consult with your Forest River, Inc., dealer and confirm the existence of any materials, design or specifications that are material to your purchase decision.

