

# Adventurer

# WINNEBAGO



## Why Adventurer?

- Corian® countertops and mosaic tile backplash
- Powered king bed (37F, 38Q)
- Infotainment Center with Rand McNally RV GPS and dual touchscreen monitors
- Blu-ray™ Home Theater Sound System
- TrueAir® maximum comfort air conditioning
- Powered patio awning with LED lighting
- Motoraid supplemental hot water and heating system
- Available solar panel/battery charger
- Available JBL® Premium Cab Sound System





On the Cover: 37F Black Walnut Full-Body Paint

37F Manhattan with Coffee-Glazed Honey Cherry Cabinetry

## Class A in Every Detail

The Adventurer® brings a true luxury motorhome experience to the Class A gas market. Three floorplans, ranging from 35 to 38 feet, are loaded with amenities and smart features that make life on the road more enjoyable, such as Corian® countertops, MCD solar/blackout roller shades, and TrueAir® maximum comfort air

conditioning. The exterior is also a feast for the eyes with multiple full-body paint selections, stylized aluminum wheels and chrome accents. Each floorplan has expansive storage—both inside and out—and three slideouts to expand your living space. Make your move to the head of the class in a new Adventurer.



### Recognized Quality

The Recreation Vehicle Dealer Association annually rates RV manufacturers and awards the Quality Circle Award to manufacturers that provide exceptional products, service and support. Winnebago Industries is proud to be the only manufacturer that has received this award every year since its inception.





37F Manhattan with Coffee-Glazed Honey Cherry Cabinetry

The 35P features a traditional layout with a Rest Easy® sofa facing the BenchMark® full-comfort dinette. The 37F replaces the dinette with a Glide & Dine™ dining table and chairs connected to a buffet with a retractable HDTV. For the maximum lounging experience, select the 38Q with the Rest Easy Extendable Sectional Sofa that faces the full-featured entertainment center with an electric fireplace. A moveable hoop-base lounge chair in the 37F and 38Q provide additional seating flexibility. Four new interior décor options make you feel at home while the TrueAir maximum comfort air conditioning keeps you cool all summer long.



MCD Solar/Blackout Roller Shades



37F Cab Seats Reclined





37F Rest Easy Sofa



37F Lounge Chair



37F Glide & Dine Dining Table and Chairs



37F Rest Easy Sofa with Footrests



37F Lounge Chair



OnePlace® Systems Center



37F HDTV



37F Glide & Dine Dining Table and Chairs



37F Rest Easy Sofa as Bed



37F HDTV Storage



Blu-ray™ System





37F Galley

The Adventurer galley is a Class A triumph with Corian solid-surface, high-gloss countertops, a decorative backsplash, and a host of appliances carefully selected for their quality and style. This includes a microwave/convection oven that cooks and browns like a traditional oven and a gorgeous residential French door refrigerator/freezer (standard 38Q/available 37F). The full-wall slideouts (NA 38Q) provide plenty of workspace and incorporate an impressive amount of storage that you've always wanted in a motorhome.



37F Full-Extension Drawers



37F Sink



37F Range



37F Microwave/Convection Oven



37F Range Covers







37F Bedroom

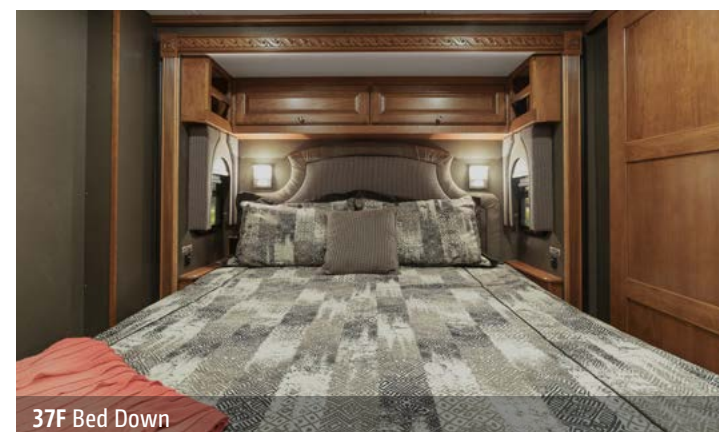
Think big in a relaxing bedroom with a large slideout, making way for a massive wardrobe and a king bed with an adjustable InnoMax® Natural Reserve Freedom mattress and a power incline frame (NA 35P). A bedroom HDTV and ceiling fan come standard in all Adventurer floorplans. The 37F comes with addition of a private master bathroom featuring the exclusive BIG Shower that provides a great start to your day.



37F Wardrobe



37F Bed Up



37F Bed Down





37F Master Bathroom



37F Mid-Coach Bathroom Vanity



37F Mid-Coach Bathroom



37F Master Bathroom Storage





Dash

You will have a hard time finding a more engaging entertainment hub in a motorhome than the Adventurer's Infotainment Center featuring Rand McNally RV GPS. In addition to turn-by-turn directions, the Infotainment Center comes with two monitors to give you control over the AM/FM stereo, connected Bluetooth® devices, and a host of other features that make travel more enjoyable. Add the available 11-speaker JBL® Premium Cab Sound System for precision-tuned sound throughout the coach. You'll also enjoy cab creature comforts such as power-adjustable Ultraleather cab seats, a passenger workstation, and an MCD solar/blackout powered front shade.



Passenger Dash Workstation  
with 12V USB Charging Ports



Powered Mirrors with Defrost  
and Sideview Cameras



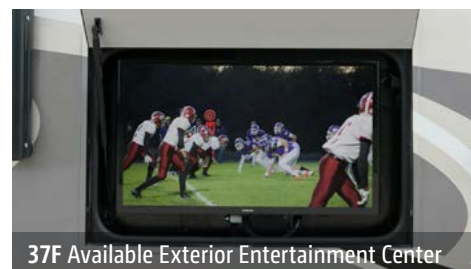


37F Powered Patio Awning

Getting set up at the campsite has never been easier thanks to a powered patio awning with integrated LED lighting. Hydraulic leveling jacks with controls in the cab and on both sides of the coach make your arrival even smoother. When setup is complete, crank up the fun by adjusting the position of the available exterior entertainment center with an HDTV. Stylized aluminum wheels provide a nice accent to the high-gloss sidewalls with full-body paint.



37F Automatic Entrance Door Steps



37F Available Exterior Entertainment Center



Exterior Service Center



Stylized Aluminum Wheel





## Fiberglass Roof

The crowned, one-piece fiberglass roof is backed by a 10-year limited parts-and-labor roof skin warranty.

**Thermo-Panel® Sidewalls** By layering fiberglass and high-density block foam insulation with welded aluminum support structures, we create some of the industry's strongest, most durable and lightweight sidewalls.

**E-Coating** An electrodeposition coating helps protect critical steel components.

**Solid Framework** Structural extruded aluminum creates an extremely strong and solid structural framework.

## Laser-Cut Tubing

Precision laser cutters create precise joints in structural steel that are stronger and require less welding.



## Interlocking Joints

Specially engineered interlocking joints connect the floor, sidewalls and roof where competitors often rely on simple screws to bear the weight.



**Embedded Steel** Metal substructures embedded into the sidewall provide solid attachment points to keep cabinets and appliances mounted securely in place.

**SUPER  
STRUCTURE**  
BUILT TO LAST

Every coach—from our smallest Class C to our largest diesel-pusher model—is built to Winnebago's® legendary SuperStructure® construction design. It's a process developed and refined over more than 50 years of building some of the strongest, most durable coaches in the industry.



## TESTING

Before rolling out of our factories, every coach undergoes an extensive 113-point inspection. Each coach also passes a high-pressure water test that simulates rain at a rate of 50-inches per hour to check for leaks. During the design process, our computer simulations, physical testing center, and rigorous test track ensure each model is built to last.



## DETAILS

At Winnebago, we treat the features you can't see with the same care as the ones you can. Look in the access panels of some of our competitors' coaches and you'll see loose insulation and wires haphazardly strewn about. Winnebago maintains a clean fit and finish throughout so your coach will last for the long haul.



## BUILT IN-HOUSE

We process and finish key aluminum parts. We rotocast our own plastic components. In fact, we manufacture most of our own parts so they are designed to fit the space, rather than fitting the space to an awkward off-the-shelf component size.



**SUPER  
STRUCTURE**  
BUILT TO LAST



Visit [BetterBuiltRVs.com](http://BetterBuiltRVs.com) to gain real insight into what goes into a Winnebago motorhome.

## TAKE A TOUR

We're proud of our processes, state-of-the-art facilities, and the people who make Winnebago number one. We invite you to visit our complex in Forest City, Iowa, for a firsthand look at the dedication and technology behind every motorhome we build.

Call (641) 585-6936 or (800) 643-4892 or visit us online at [WinnebagoInd.com/company/visit](http://WinnebagoInd.com/company/visit) for more information.



[WinnebagoInd.com](http://WinnebagoInd.com)



Choose from four fabric collections and four wood finishes.

## Brooklyn



Ultraleather



Feature Fabric



Bedspread



Corian Countertop  
(Galley)



Vinyl Flooring



Coffee-Glazed  
Vienna Maple



Coffee-Glazed  
Honey Cherry



Glazed Java



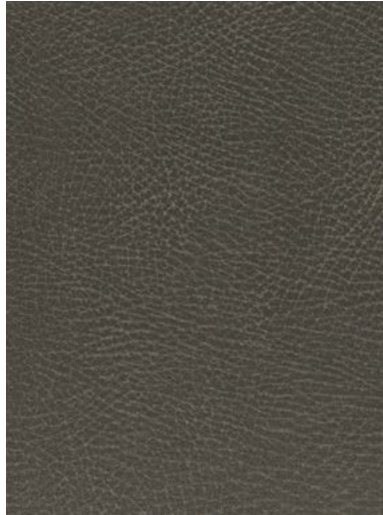
Glazed Driftwood

Winnebago® reserves the right to change décor materials and specifications without notice or obligation.



Choose from four fabric collections and four wood finishes.

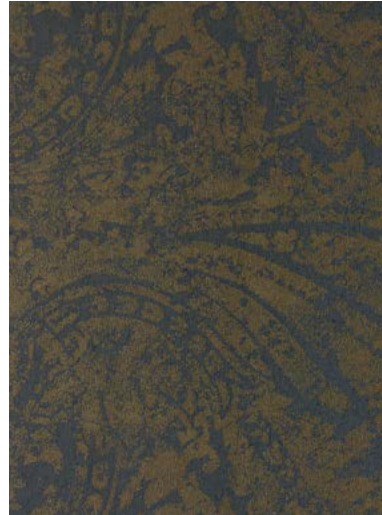
## Greenwich



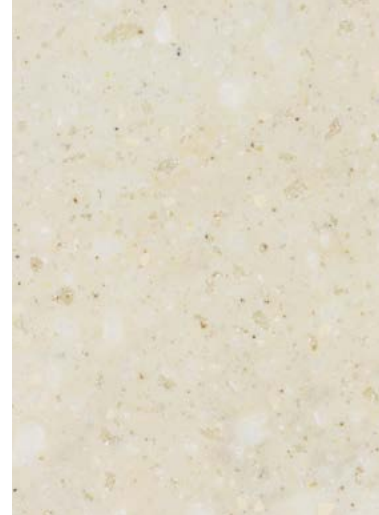
Ultraleather



Feature Fabric



Bedspread



Corian Countertop  
(Galley)



Vinyl Flooring



Coffee-Glazed  
Vienna Maple



Coffee-Glazed  
Honey Cherry



Glazed Java



Glazed Driftwood

Winnebago® reserves the right to change décor materials and specifications without notice or obligation.

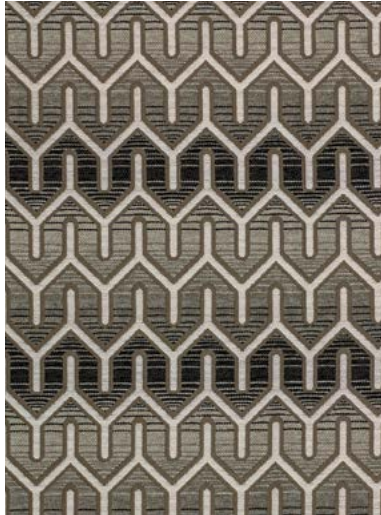


Choose from four fabric collections and four wood finishes.

## Manhattan



Ultraleather



Feature Fabric



Bedsread



Corian Countertop  
(Galley)



Vinyl Flooring



Coffee-Glazed  
Vienna Maple



Coffee-Glazed  
Honey Cherry



Glazed Java



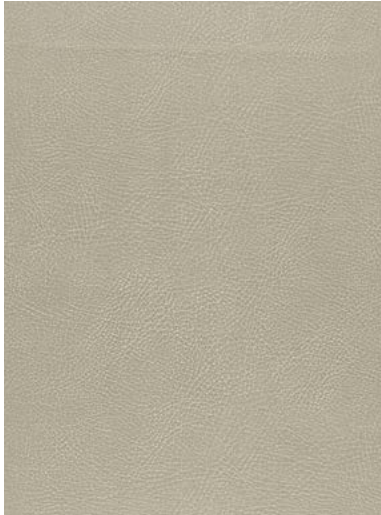
Glazed Driftwood

Winnebago® reserves the right to change décor materials and specifications without notice or obligation.



Choose from four fabric collections and four wood finishes.

## Tribeca



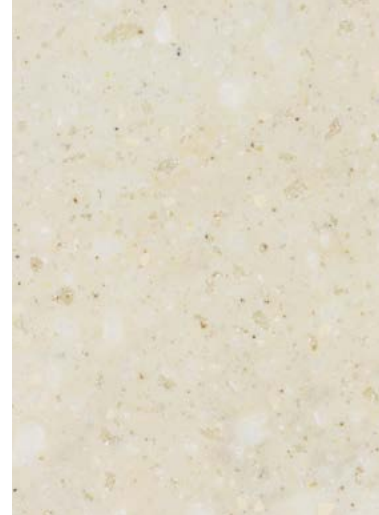
Ultraleather



Feature Fabric



Bedspread



Corian Countertop  
(Galley)



Vinyl Flooring



Coffee-Glazed  
Vienna Maple



Coffee-Glazed  
Honey Cherry



Glazed Java



Glazed Driftwood

Winnebago® reserves the right to change décor materials and specifications without notice or obligation.



Full-body paint comes standard in the style of your choice.



**Amber**  
FULL-BODY PAINT



**Black Walnut**  
FULL-BODY PAINT



**Pewter Pearl**  
FULL-BODY PAINT



# Adventurer Paint

**WINNEBAGO**

Full-body paint comes standard in the style of your choice.



**Sandstone**  
FULL-BODY PAINT



**Sapphire**  
FULL-BODY PAINT



**Titanium**  
FULL-BODY PAINT

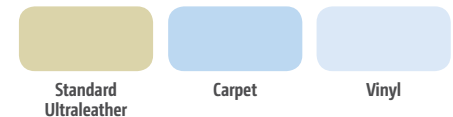
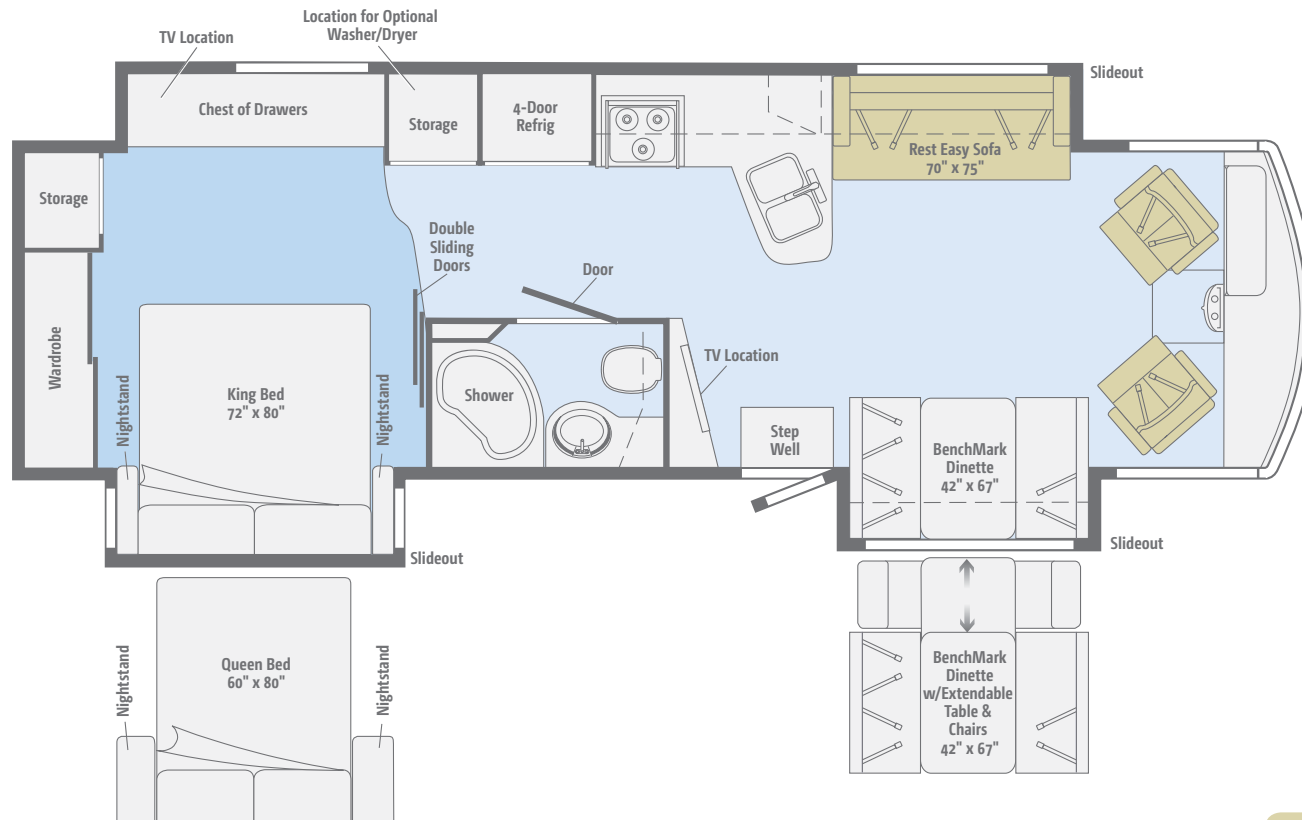




Click here to explore this floorplan's web page.

## 35P

The full-wall slideout makes room for a large L-shaped galley and plenty of bedroom storage with space for an available washer/dryer.



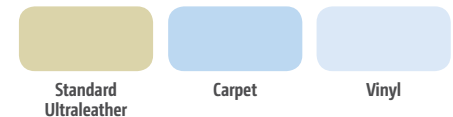
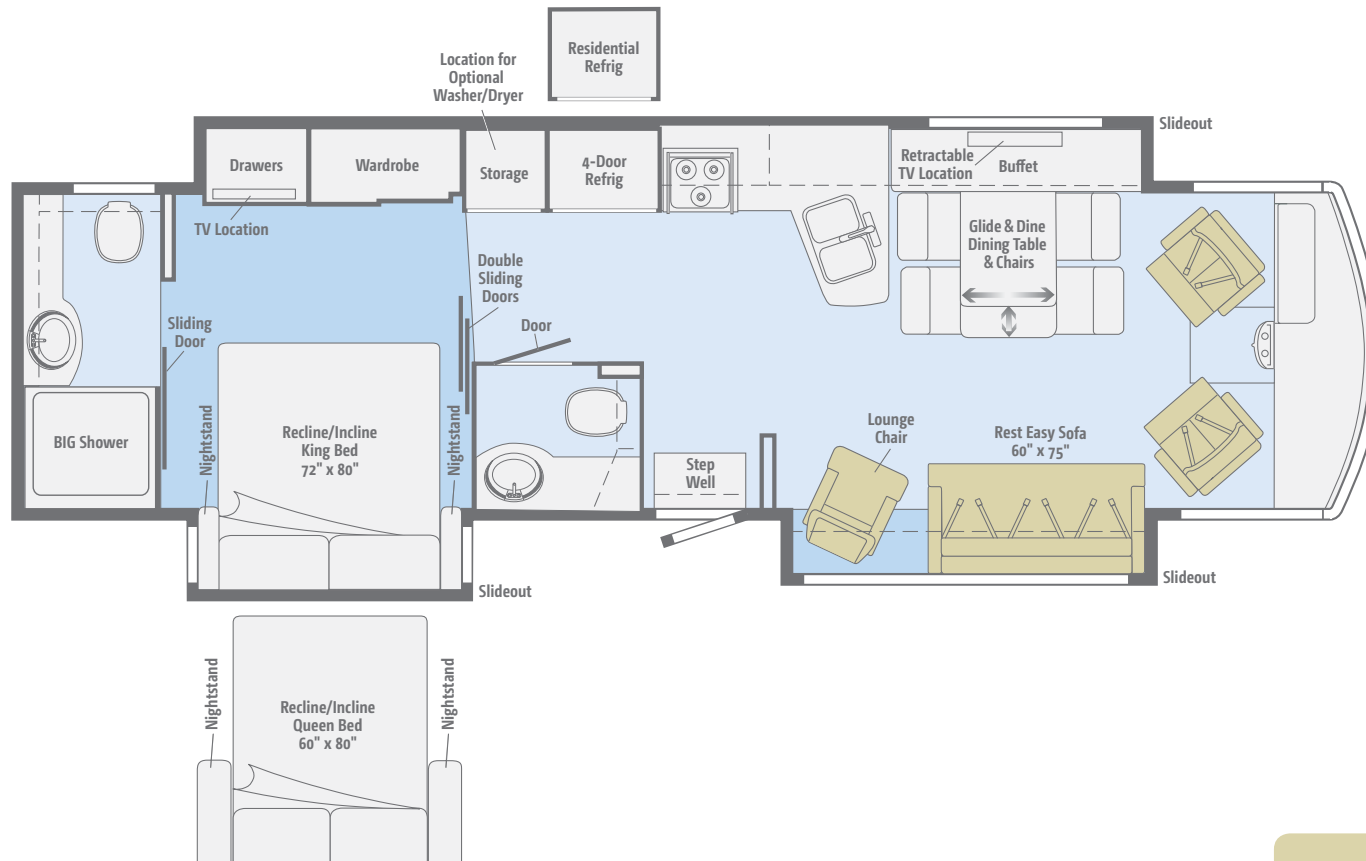




Click here to explore this floorplan's web page.

## 37F

Go big with a powered king bed, 1.5 bathrooms, the exclusive BIG Shower, and a full-wall slide housing a dining table/buffet with a giant retractable HDTV.



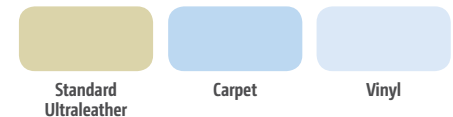




Click here to explore this floorplan's web page.

## 38Q

The Rest Easy Extendable Sectional Sofa, reclining lounge chair, and Ultraleather cab seats come together to form the ultimate lounge.





Weights & Measures	35P	37F	38Q
Length	35'6"	37'6"	38'8"
Exterior Height <sup>1</sup>	12'5" <sup>A</sup> /12'6" <sup>B</sup>	12'6"	12'6"
Exterior Width <sup>2</sup>	8'5.5"	8'5.5"	8'5.5"
Exterior Storage <sup>3</sup> (cu. ft.)	125.5	121.7	121.9
Awning Length	17'	18'	14'
Interior Height	7'	7'	7'
Interior Width	8'0.5"	8'0.5"	8'0.5"
Freshwater Tank Capacity <sup>4</sup> (gal.)	78	78	63
Water Heater Capacity (gal.)	10	10	10
Holding Tank Capacity - Black/Gray <sup>4</sup> (gal.)	43/57	52/71	75/79
LP Capacity <sup>5</sup> (gal.)	28	28	28
Fuel Capacity (gal.)	80	80	80
GCWR <sup>6</sup> (lbs.)	26,000 <sup>A</sup> /30,000 <sup>B</sup>	30,000 <sup>B</sup>	30,000 <sup>C</sup>
GVWR (lbs.)	22,000 <sup>A</sup> /24,000 <sup>B</sup>	24,000 <sup>B</sup>	26,000 <sup>C</sup>
GAWR - Front (lbs.)	8,000 <sup>A</sup> /9,000 <sup>B</sup>	9,000 <sup>B</sup>	9,000 <sup>C</sup>
GAWR - Rear (lbs.)	15,000 <sup>A</sup> /15,500 <sup>B</sup>	15,500 <sup>B</sup>	17,500 <sup>C</sup>
Wheelbase	228"	248"	248"
Seating Capacity	7	5	4

A Ford F53 22,000-lb. Chassis w/22.5" tires

B Ford F53 24,000-lb. Chassis w/22.5" tires

C Ford F53 26,000-lb. Chassis w/22.5" tires

## Ford® F53 Chassis

**22,000-lb. Chassis 6.8L V10 SEFI Triton® engine, TorqShift™ 6-speed automatic overdrive transmission w/tow/haul, Hydro-Max brakes w/4-wheel ABS, 175-amp. alternator (35P)**

**24,000-lb. chassis (37F)**

**26,000-lb. chassis (38Q)**

**7-pin trailer wiring**

**Trailer hitch® 5,000-lb. drawbar/500-lb. maximum vertical tongue weight**

**Stylized aluminum wheels**

**Hydraulic leveling jacks w/3-position controls**

## OPTIONAL EQUIPMENT

**24,000-lb. chassis (35P)**

**Rear valve stem extensions**

## Cab Conveniences

**Infotainment Center with Rand McNally RV GPS 10.4" touch screen color monitor w/split screen function, 2nd monitor, Rand McNally RV GPS safe & easy routing, amenities & tools, trips & content, turn-by-turn voice guidance, AM/FM radio, handheld remote, SiriusXM™ (subscription not included), compass, outside temperature, iPod/iPhone® audio integration, Bluetooth™ color rearview camera**

**Chassis/house battery radio power switch**

**Cab seats adjustable armrests, fixed lumbar support, multi-adjustable slide/recline/swivel**

**6-way power driver seat**

**3-point seat belts**

**Defroster fans**

**Cruise control**

**12-volt powerpoints**

**Map lights**

**Power steering w/tilt wheel**

**Dash workstation**

**Power mirrors w/defrost and sideview cameras**

**MCD solar/blackout powered front shade**

**Privacy curtain driver and passenger windows**

**Solar shades driver and passenger windows**

**Convenience tray (engine cover)**

**Passenger-side curb view window**

**Instrument panel**

**Cab sound control package**

**Motor cover**

**Trim panel**

## OPTIONAL EQUIPMENT

**Passenger seat w/footrest**

**JBL premium audio tuned 360-watt amplifier w/11 speakers including subwoofer**

## Interior

**Dining table/buffet/chairs w/retractable 48" HDTV (37F)**

**Entertainment center w/48" HDTV (35P, 38Q)**

**Amplified digital HDTV antenna system**

**Blu-ray™ Home Theater Sound System amplifier, CD/DVD player, iPhone®/iPod dock w/video, receiver, 5 speakers, and subwoofer**

**OnePlace® systems center**

**Satellite system ready (lounge and bedroom)**

**MCD solar/blackout roller shades (in select areas)**

**Contour™ windows frameless, dual-paned**

**LED ceiling and accent lighting**

**Soft vinyl ceilings**

**HDMI Matrix central video selection system**

**Powered ventilator fan (galley)**

**Powered roof vent(s) (bath)**

**Washer/dryer prep**

**Electric fireplace (38Q)**

**Assist bar**

## OPTIONAL EQUIPMENT

**Rest Easy® sectional sofa, dual control (38Q)**

**Rest Easy sofa, dual control (35P, 37F)**

**Winegard Trav'ler® automatic HDTV antenna system**

**Stackable washer/dryer**

**Lounge chair (37F, 38Q)**

**Vinyl floor covering throughout**

**Ottomans (2) (38Q)**

## Galley

**Corian® solid-surface high-gloss countertop, flip-up extension, and decorative backsplash**

**Microwave/convection oven w/range fan and touch controls**

**3-burner range top w/storage below**

**Corian sink and range covers**

**4-door 2-way refrigerator/freezer w/icemaker (35P, 37F)**

**French door residential refrigerator, counter-depth, stainless steel, interior water dispenser, icemaker, and glide-out bottom drawer freezer (38Q)**

**Cold water filtration system**

**Pantry (38Q)**

## OPTIONAL EQUIPMENT

**French door residential refrigerator, counter-depth, stainless steel, interior water dispenser, icemaker, and glide-out bottom drawer freezer (37F) (includes 4 AGM batteries)**

**3-burner range w/oven**

## Bath

**Textured glass shower door**

**Flexible showerhead**

**Corian countertop w/decorative backsplash**

**Skylight (35P)**

**Water pump switch(es)**

**Porcelain toilet w/foot pedal and sprayer**

**Electric toilet (37F rear bath)**

**Linen cabinet (35P, 37F)**

**Medicine cabinet**



**Robe hook(s)** (35P)

**Tissue holder**

**Towel bar(s)**

**Towel ring(s)**

## Bedroom

**Powered king bed** w/InnoMax® Natural Reserve Freedom Air mattress w/remotes (37F, 38Q)

**King bed** w/innerspring mattress (35P) (storage below)

**28" HDTV** (37F)

**32" HDTV** (35P, 38Q)

**Bedsread, pillow shams, and pillows**

**Ceiling fan**

**Headboard**

### OPTIONAL EQUIPMENT

**King InnoMax® Natural Reserve Freedom Air mattress** w/remotes (35P)

**Queen InnoMax® Natural Reserve Freedom Air mattress** w/remotes (35P)

**Queen bed** w/innerspring mattress (35P) (storage below)

**Powered queen bed** w/InnoMax® Natural Reserve Freedom Air mattress w/remotes (37F, 38Q)

**Vinyl tile throughout** (slideouts carpeted)

## Exterior

**Driver's side service light**

**TriMark® KeyOne™ lock system**

**Lower front protective mask**

**Porch light** w/interior switch

**Automatic entrance steps**

**Powered entrance awning** (38Q)

**Powered patio awning** w/LED lighting and metal wrap

**Ladder**

**Front and rear mud flaps**

**Lighted storage compartments** (in select compartments)

### OPTIONAL EQUIPMENT

**Exterior Entertainment Center 32" HDTV**

## Heating & Cooling System

**40,000 BTU low-profile 2-speed furnace**

**TrueAir® Maximum Comfort A/C** 2-13,500 BTU, low-profile air conditioners w/heat pumps

## Electrical System

**AC/DC distribution system**

**45-amp. converter/charger** (35P)

**Service Center** cable TV input, 50-amp. power cord, QuickPort® service connection hatch, portable satellite dish hookup

**Cummins Onan® Energy Command™ automatic generator start system**

**Exterior AC duplex receptacle**

**5,500-watt Cummins Onan Marquis Gold™ generator**

**1,000-watt inverter** (35P)

**2,000-watt inverter/charger** (37F, 38Q)

**PowerLine® Energy Management System**

**Auxiliary start circuit**

**2 deep-cycle Marine/RV Group 31 batteries** (35P, 37F)

**4 deep-cycle Marine/RV sealed AGM batteries** (38Q)

**Battery disconnect systems** (coach and chassis)

**Automatic dual-battery charge control**

**Generator/shoreline automatic changeover switch**

**Exterior antenna jack**

### OPTIONAL EQUIPMENT

**100-watt solar panel/battery charger**

**300-watt solar panel/battery charger**

## Plumbing System

**LPG accessory connection** (patio area)

**Service Center** QuickPort service connection hatch, exterior wash station w/pump switch, pressurized city water hookup w/diverter valve, drainage valves, 10' sewer hose

**Black tank flushing system**

**Permanent-mount LP tank** w/gauge

**TrueLevel™ holding tank monitoring system**

**On-demand water pump**

**Heated holding tank compartment**

**Winterization Package** water heater bypass valve and siphon tube

**10-gallon water heater** 110-volt/LP w/motoraid auxiliary hot water supply system and auxiliary auto heater

**Gravity water tank fill** w/lockable door

## Safety

**Child seat tether anchor** (dinette) (35P)

**LP, smoke, and carbon monoxide detectors**

**10 BC fire extinguisher**

**Ground fault interrupter**

**Fog lamps**

**High-mount brake lamps**

## Warranty<sup>7</sup>

**12-month/15,000-mile basic limited warranty<sup>8</sup>**

**36-month/36,000-mile limited warranty on structure<sup>8</sup>**

**10-year limited parts-and-labor warranty on roof skin<sup>8</sup>**

### FOOTNOTES

1. The height of each model is measured to the top of the tallest standard feature and is based on the curb weight of a typically equipped unit. The actual height of your vehicle may vary by several inches depending on chassis or equipment variations. Please check with your dealer for further information.
2. Floorplans feature a wide-body design - over 96". In making your purchase decision, you should be aware that some states restrict access on some or all state roads to 96" in body width. Before making your purchase decision, you should confirm the road usage laws in the states of interest to you.
3. The load capacity of your motorhome is designated by weight, not by volume, so you cannot necessarily use all available space when loading your motorhome.
4. Capacities are based on measurements prior to tank installation. Slight capacity variations can result due to installation applications.
5. Capacities shown are tank manufacturer's listed water capacity (WC.). Actual filled LP capacity is 80% of listing due to overfilling prevention device on tank.
6. Actual towing capacity is dependent on your particular loading and towing circumstances which includes the GVWR, GAWR, and GCWR as well as adequate trailer brakes. Please refer to the Operator's Manual of your vehicle for further towing information.
7. See separate chassis warranty.
8. See your dealer for complete warranty information.

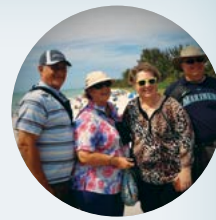
NA Not Available

Not all items available in combination. See dealer for details.

Winnebago's® continuing program of product improvement makes specifications, equipment, model availability, and prices subject to change without notice. Published content reflects the most current product information at time of printing. Please consult your dealer for individual vehicle features and specifications.







Let us host  
your next

# Adventure



[WGOAdventures.com](http://WGOAdventures.com)



**WINNEBAGO**  
RV INSURANCE



From RV to personal insurance, Winnebago RV Insurance can provide all the coverage and services you need to feel at home on the road.

**For more information:**  
**(800) 642-4892**

Connect with Winnebago (Click one of the following)



Like us



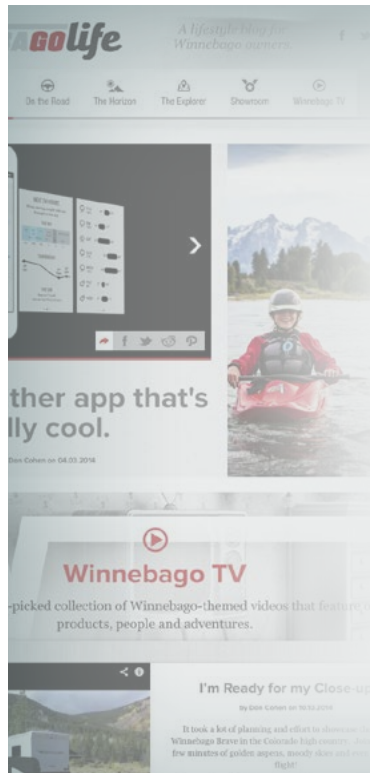
Follow us



Watch us

## WinnebagoInd.com Has All The Answers

Visit [WinnebagoInd.com](http://WinnebagoInd.com) on your computer, smartphone, or tablet for the latest product information and updates.



## Welcome to GoLife!

Visit our lifestyle blog for motorhome news, personal travelogues, and community stories.

**[WinnebagoLife.com](http://WinnebagoLife.com)**

**GoLife**



# **PREFERRED CARE PROGRAM**

We back our motorhomes with best-in-class support both before and after the sale:

- 12-month/15,000-mile basic limited warranty
- 36-month/36,000-mile limited warranty on structure
- 10-year limited parts-and-labor warranty on fiberglass roof
- Complimentary 24-hour roadside assistance program



- TripSaver® Fast Track Parts guarantees that in-stock warranty parts ship directly to your dealer within 24 hours
- National dealer service network

For more information:  
**WGOService.com**



## Join the Club, Join the Fun

Here's the perfect way to begin your life on the road as the owner of a new Winnebago – by joining the exclusive WIT Club. Start your adventure with other fun-loving WIT Club members from across the country and get the most out of your new Winnebago motorhome.



### Members enjoy:

- Caravans and rallies
- Newsletters
- Local and state group activities
- RV travel benefits

See more at  
**WITClub.com**



## Grand National Rally

Each year, thousands of Winnebago owners descend upon Forest City, Iowa. Rally-goers enjoy an unforgettable week reconnecting with friends, taking tours, participating in activities, and more. Join the adventure next July!



## CONTACT US

### GENERAL INQUIRIES

Corporate Switchboard  
(641) 585-3535

### CURRENT PRODUCT OWNER AND SERVICE-RELATED INQUIRIES

(800) 537-1885  
or @winnebagoind.com

### NEW VEHICLE SALES INQUIRIES

sales@winnebagoind.com

### FAX

(641) 585-6966

### POSTAL ADDRESS

Winnebago Industries, Inc.  
P.O. Box 152  
Forest City, IA 50436

### STREET ADDRESS

Winnebago Industries, Inc.  
605 West Crystal Lake Road  
Forest City, IA 50436