

# Vista LX

# WINNEBAGO



## Why Vista LX?

- Touch screen Radio/Rearview Monitor System (GPS and SiriusXM® ready)
- Available A/C heat pump(s)
- Dash workstation with USB cable connection
- Versa easy-swivel driver's seat
- Powered patio awning with LED lighting
- Available exterior entertainment center
- Available powered StudioLoft™ bed
- Soft Primera® furniture
- Bunk beds (35B)
- MCD solar/blackout roller shades
- Water heater with motoraid
- Curbview window
- Winnebago's® legendary SuperStructure® construction design



On the Cover: 30T Dark Spiral Gray Full-Body Paint

30T Rockslide with Coffee-Glazed Vienna Maple Cabinetry

## Step Up to Class A Living

You appreciate a great value, but you also appreciate some of the finer things a Class A coach can offer. Say hello to the Vista® LX. It combines the value and uncompromising quality of Winnebago® that made the Vista so popular, with additional standard features and four unique floorplans that raise the bar for feature-packed motorhomes. Triple sliderooms (NA 35F)

open up new avenues for features such as bunk beds in the 35B and a dining table/buffet with a retractable HDTV in the 30T. Popular amenities include Corian® galley countertops, sink covers, raised panel refrigerator inserts, and much more. All this at a friendly price makes the Vista LX the introduction to Class A living that you deserve.



2016 MotorHome  
READERS' CHOICE  
WINNER  
Class A



30T Rockslide with Coffee-Glazed Vienna Maple Cabinetry

The Vista LX treats you right with four floorplans built around a relaxing lounge with an HDTV. The 35F refines the art of relaxation with the extendable sectional sofa in soft Primera upholstery, perfect for binge watching season after season of your favorite shows. A classic dinette comes standard, which can be upgraded to the BenchMark® dinette with spring seating, hidden storage, and the Dream Dinette™ table. For extra sleeping space, add the new, larger StudioLoft™ bed that stays tucked away in the ceiling until you need it. It's the perfect solution for those who travel with family or friends.



Front Wraparound Curtain



30T Passenger Seat Reclined with Footrest



30T Available StudioLoft Bed



30T Sofa



OnePlace® Systems Monitor



30T Dining Table and Buffet



30T Sofa as Bed



30T Retractable HDTV and Storage



30T Buffet



30T MCD Solar/Blackout Roller Shades



30T Galley

The galley shines with abundant cabinetry and gorgeous Corian countertops. Standard appliances include a microwave oven, two-door refrigerator/freezer (freezer NA 35F), and a three-burner range that come with your choice of storage or an oven below it. Enjoy standard galley amenities such as a range cover, sink covers, cabinet wood refrigerator door inserts, and a flip-up countertop extension (NA 27N). A microwave/convection oven is available in all floorplans and a residential refrigerator/freezer is standard in the 35F so you can stock up on fresh and frozen foods.



Corian Sink Covers



30T Full-Extension Drawers



30T Refrigerator/Freezer



30T Microwave/Convection Oven



30T Bedroom

The private master bedroom is designed to provide a welcomed escape that includes a walk-around queen bed, plentiful wardrobe space, and an available HDTV. Both 35-foot floorplans feature a private master bathroom with the exclusive BIG Shower—the roomiest shower on wheels. If you travel with family or friends, check out the 35B, which boasts bunk beds with available monitors, individual DVD players, and headphones to keep everyone entertained.



30T Under Bed Storage



30T Bathroom



30T Shower

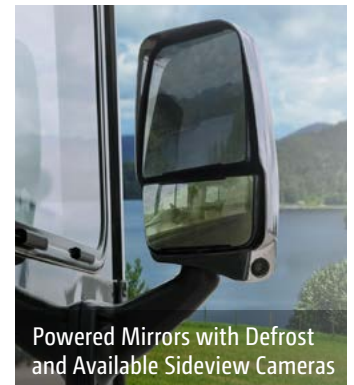


Dash

Relax and enjoy the ride from the fully adjustable Versa driver's seat that swivels to become an equally comfortable lounge chair. From the cab seat you're in total command, with the 6.2" touchscreen monitor within reach. It features a rearview monitor, stereo, DVD player, iPod®/MP3 input, Bluetooth® connectivity, and a handheld remote. Upgrade your comfort with a six-way driver's seat power pedestal and a passenger seat with footrest. A sideview camera system is also available to help make lane changes a breeze.



Passenger Dash Workstation with 12V USB Charging Ports



Powered Mirrors with Defrost and Available Sideview Cameras



**W** 30T Powered Patio Awning

Strike a bold pose by selecting full-body paint to adorn the premium high-gloss sidewalls. For protection, add a lower front protective mask to keep the front of your coach ding-free. Storage is not only abundant, but it's easy to access with paddle latches that hold securely with dual latching points. For extra outdoor fun, add the exterior entertainment center with an HDTV, AM/FM stereo, DVD player, and remote (NA 30T).



30T Stainless Steel Wheel Liners





30T Exterior Entertainment Center with Removable TV Table



Exterior Wash Station



30T Automatic Entrance Door Steps



Exterior Rear Storage



Exterior Storage



Exterior Service Center

## Fiberglass Roof

The crowned, one-piece fiberglass roof is backed by a 10-year limited parts-and-labor roof skin warranty.

## Rubber Can't Cut It

Rubber roofs used by competitors can streak and degrade over time.

## Thermo-Panel® Sidewalls

By layering fiberglass and high-density block foam insulation with welded aluminum support structures, we create some of the industry's strongest, most durable and lightweight sidewalls.

## E-Coating

An electrodeposition coating helps protect critical steel components.

**Embedded Steel** Metal substructures embedded into the sidewall provide solid attachment points to keep cabinets and appliances mounted securely in place.

## Laser-Cut Tubing

Precision laser cutters create precision joints in structural steel that are stronger and require less welding.



## Interlocking Joints

Specially engineered interlocking joints connect the floor, sidewalls and roof where competitors often rely on simple screws to bear the weight.



**Solid Framework** Structural extruded aluminum creates an extremely strong solid frame.

# SUPER STRUCTURE

BUILT TO LAST

Every coach—from our smallest Class C to our largest diesel-pusher model—is built to Winnebago's® legendary SuperStructure® construction design. It's a process developed and refined over more than 50 years of building some of the strongest, most durable coaches in the industry.

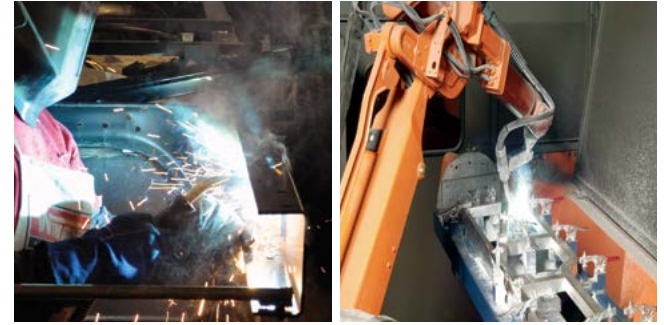
**TESTING** Before rolling out of our factories, every coach undergoes an extensive 113-point inspection. Each coach also passes a high-pressure water test that simulates rain at a rate of 50-inches per hour to check for leaks. During the design process, our computer simulations, physical testing center, and rigorous test track ensure each model is built to last.



**DETAILS** At Winnebago, we treat the features you can't see with the same care as the ones you can. Look in the access panels of some of our competitors' coaches and you'll see loose insulation and wires haphazardly strewn about. Winnebago maintains a clean fit and finish throughout so your coach will last for the long haul.



**BUILT IN-HOUSE** We process and finish key aluminum parts. We rotocast our own plastic components. In fact, we manufacture most of our own parts so they are designed to fit the space, rather than fitting the space to an awkward off-the-shelf component size.

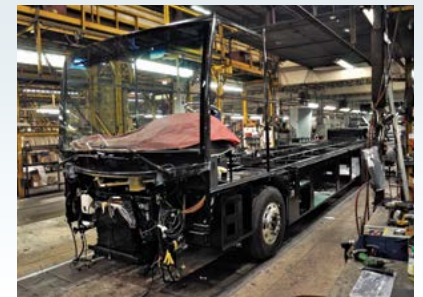


**SUPER  
STRUCTURE**  
BUILT TO LAST

Visit [BetterBuiltRVs.com](http://BetterBuiltRVs.com) to gain real insight into what goes into a Winnebago motorhome.

**TAKE A TOUR** We're proud of our processes, state-of-the-art facilities, and the people who make Winnebago number one. We invite you to visit our complex in Forest City, Iowa, for a firsthand look at the dedication and technology behind every motorhome we build.

Call (641) 585-6936 or (800) 643-4892 or visit us online at [Winnebagolnd.com/company/visit](http://Winnebagolnd.com/company/visit) for more information.



Choose from four fabric collections and three wood finishes.

## Legend



Primera



Feature Fabric



Bedspread



Corian Countertop  
(Galley)



Vinyl Flooring



Honey Cherry



Coffee-Glazed  
Vienna Maple



Glazed Driftwood

Winnebago® reserves the right to change décor materials and specifications without notice or obligation.

Choose from four fabric collections and three wood finishes.

## Rockslide



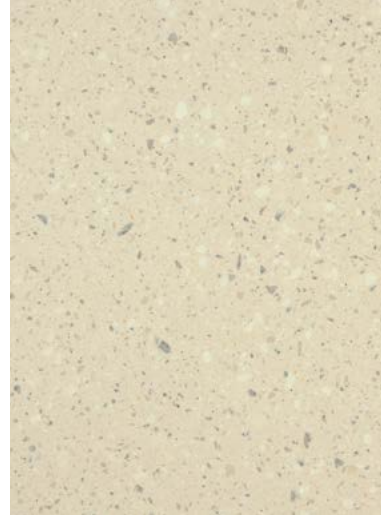
Primera



Feature Fabric



Bedspread



Corian Countertop  
(Galley)



Vinyl Flooring



Honey Cherry



Coffee-Glazed  
Vienna Maple



Glazed Driftwood

Winnebago® reserves the right to change décor materials and specifications without notice or obligation.

Choose from four fabric collections and three wood finishes.

## Infinity



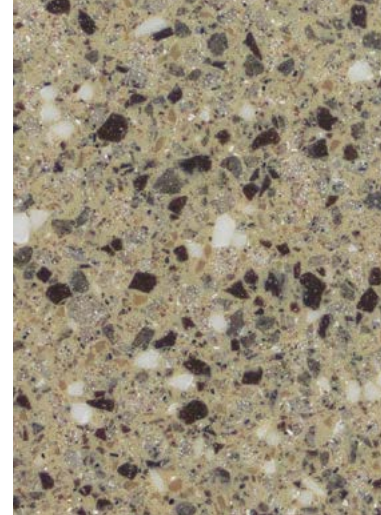
Primera



Feature Fabric



Bedsread



Corian Countertop  
(Galley)



Vinyl Flooring



Honey Cherry



Coffee-Glazed  
Vienna Maple



Glazed Driftwood

Winnebago® reserves the right to change décor materials and specifications without notice or obligation.

Choose from four fabric collections and three wood finishes.

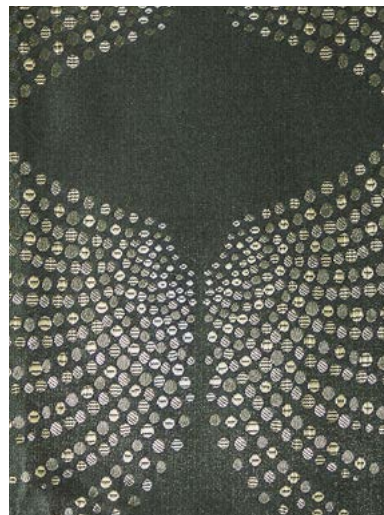
## Stardust



Primera



Feature Fabric



Bedspread



Corian Countertop  
(Galley)



Vinyl Flooring



Honey Cherry



Coffee-Glazed  
Vienna Maple



Glazed Driftwood

Winnebago® reserves the right to change décor materials and specifications without notice or obligation.

The Vista LX comes standard with two premier high-gloss deluxe graphics packages or available full-body paint.



**Solar Flare Pearl**  
DELUXE GRAPHICS



**Indigo Pearl**  
DELUXE GRAPHICS



The Vista LX comes standard with two premier high-gloss deluxe graphics packages or available full-body paint.



**Cayenne**  
FULL-BODY PAINT



**Cream**  
FULL-BODY PAINT



**Arctic Silver**  
FULL-BODY PAINT

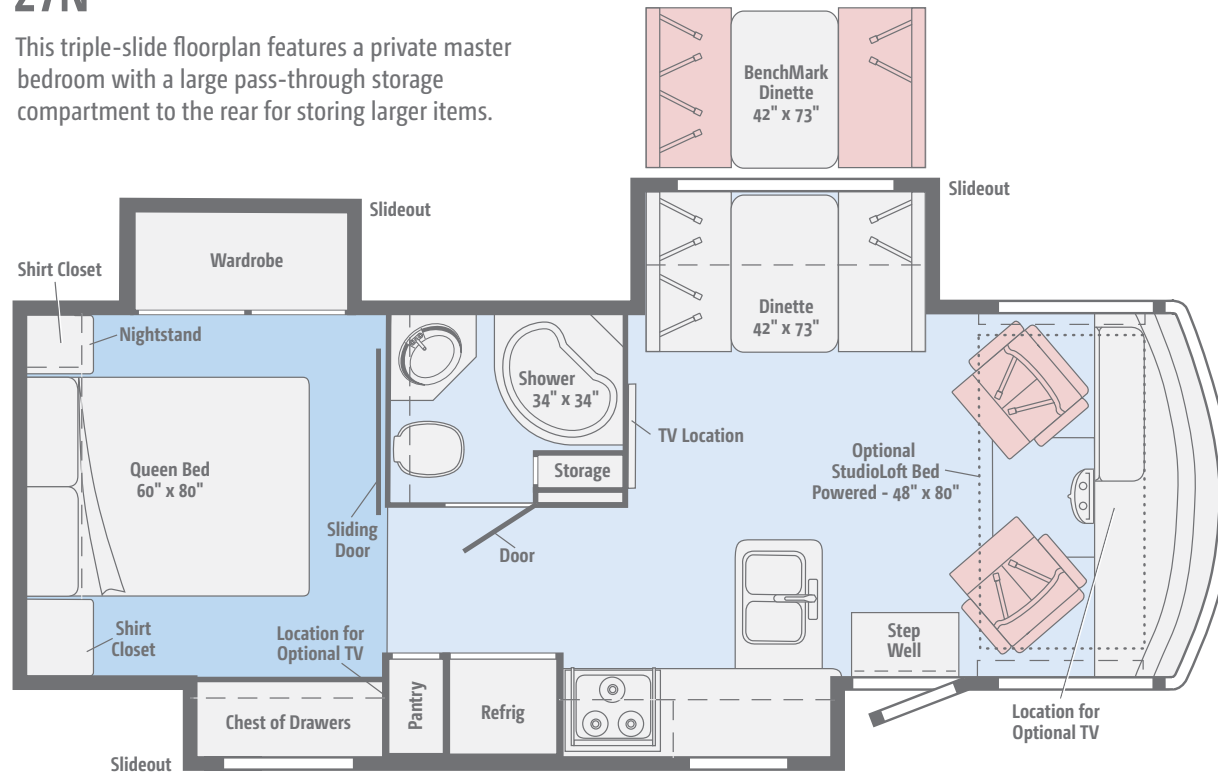


**Dark Spiral Gray**  
FULL-BODY PAINT

[Click here to explore this floorplan's web page.](#)

## 27N

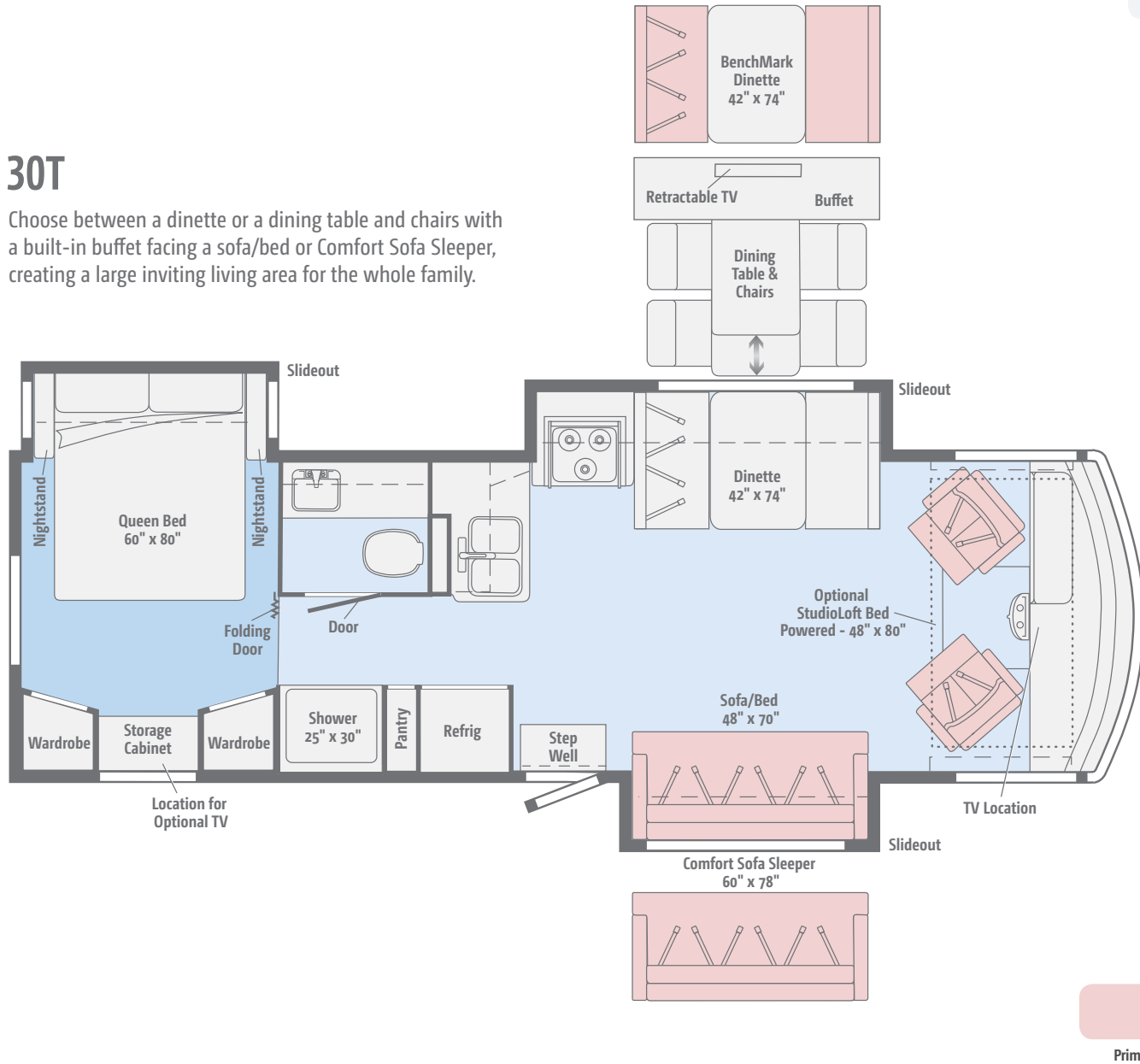
This triple-slide floorplan features a private master bedroom with a large pass-through storage compartment to the rear for storing larger items.



[Click here to explore this floorplan's web page.](#)

### 30T

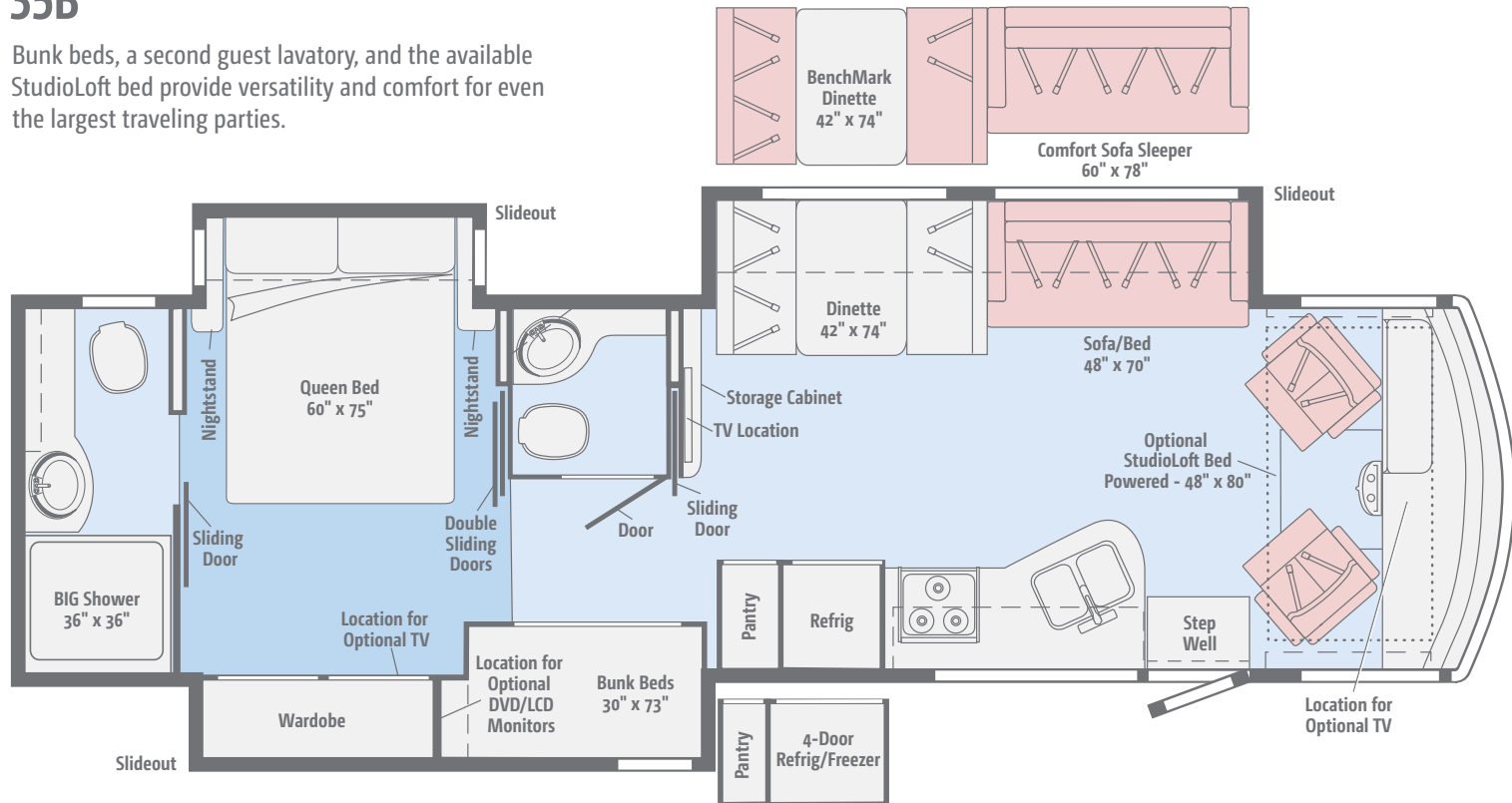
Choose between a dinette or a dining table and chairs with a built-in buffet facing a sofa/bed or Comfort Sofa Sleeper, creating a large inviting living area for the whole family.



Click here to explore this floorplan's web page.

### 35B

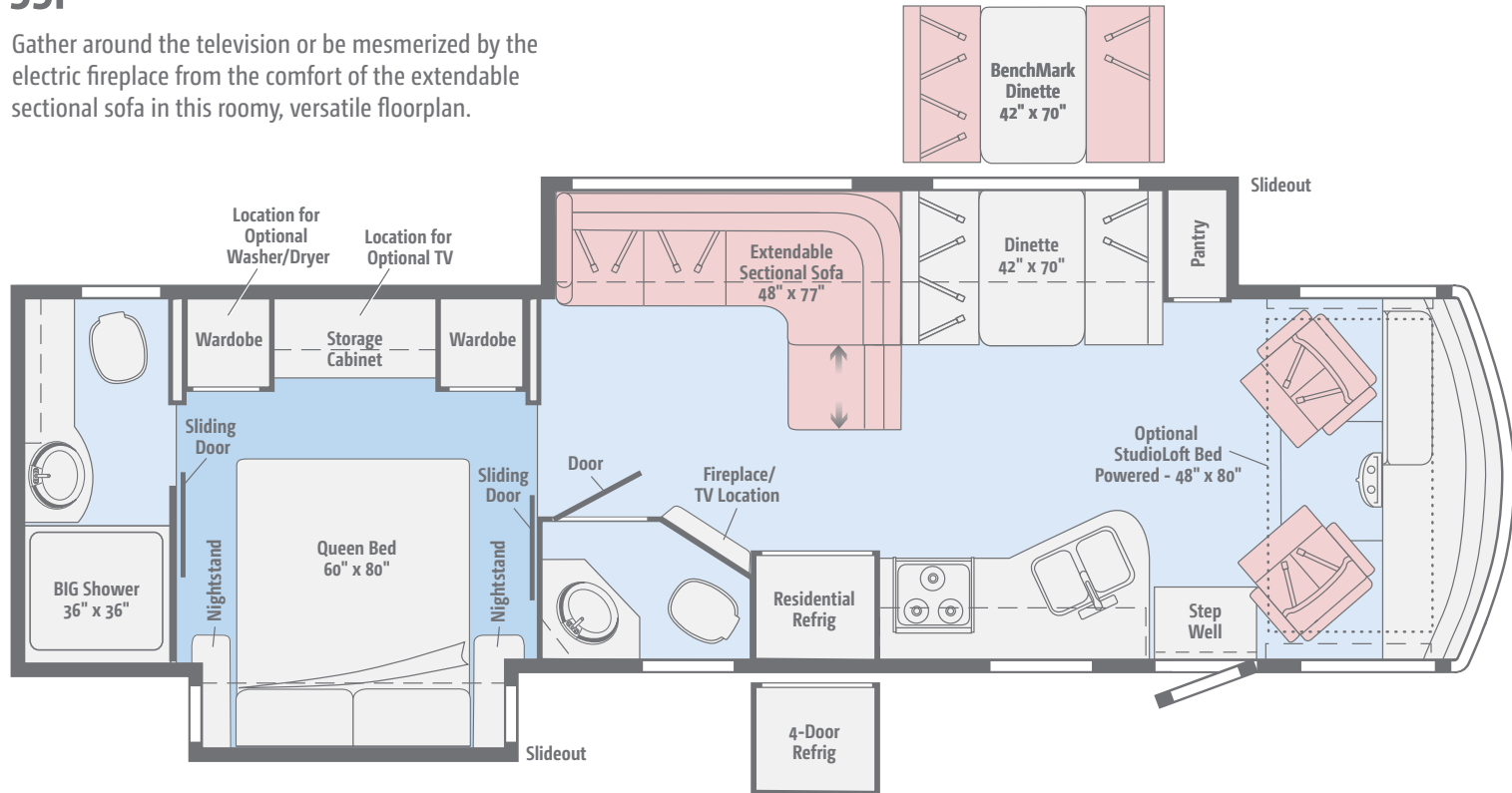
Bunk beds, a second guest lavatory, and the available StudioLoft bed provide versatility and comfort for even the largest traveling parties.



[Click here to explore this floorplan's web page.](#)

# 35F

Gather around the television or be mesmerized by the electric fireplace from the comfort of the extendable sectional sofa in this roomy, versatile floorplan.



Weights & Measures	27N	30T	35B	35F
Length	28'5"	31'	36'5"	35'5"
Exterior Height <sup>1</sup>	12'2"	12'1"	12'5"	12'5"
Exterior Width <sup>2</sup>	8'5.5"	8'5.5"	8'5.5"	8'5.5"
Exterior Storage <sup>3</sup> (cu. ft.)	123	118	160	137
Awning Length	19'	19'	13'	16'
Interior Height	6'8"	6'8"	6'8"	6'8"
Interior Width	8'0.5"	8'0.5"	8'0.5"	8'0.5"
Freshwater Tank Capacity <sup>4</sup> (gal.)	64	78	93	74
Water Heater Capacity (gal.)	6	6	6	10
Holding Tank Capacity - Black/Gray <sup>4</sup> (gal.)	43/53	41/42	41/46 & 41/51*	41/51 & 21/NA**
LP Capacity <sup>5</sup> (gal.)	18	18	18	18
Fuel Capacity (gal.)	80	80	80	80
GCWR <sup>6</sup> (lbs.)	23,000	23,000	26,000	26,000
GVWR (lbs.)	18,000	18,000	22,000	22,000
GAWR - Front (lbs.)	7,000	7,000	8,000	8,000
GAWR - Rear (lbs.)	12,000	12,000	15,000	15,000
Wheelbase	178"	190"	242"	228"
Seating Capacity	5	7	8	7

\* The 35B uses separate black and gray tanks for each bathroom \*\* The 35F uses separate black tanks for each bathroom

## Ford® F53 Chassis

3-valve Triton® V10 engine SEFI, TorqShift™ 6-speed automatic transmission w/tow/haul, 175-amp. alternator

Hydraulic brakes w/ABS

Trailer Hitch<sup>6</sup> 5,000-lb. drawbar/500-lb. maximum vertical tongue weight

7-pin connector

Stainless steel wheel liners and rear valve stem extensions w/19.5" tires (27N, 30T)

Stylized aluminum wheels w/22.5" tires (35B, 35F)

Automatic hydraulic leveling jacks

### OPTIONAL EQUIPMENT

Rear valve stem extensions w/22.5" tires (35B, 35F)



Ford® F53 Chassis

## Cab Conveniences

**Radio/Rearview Monitor System** 10" LCD color touch screen, handheld remote, iPod®/MP3 input, rear color camera, Bluetooth®, SiriusXM® (includes 90-day trial subscription), Spotify®, AppRadio One

**Cab seats** adjustable armrests, fixed lumbar support, and multi-adjustable slide/recline/swivel

**3-point seat belts**

**Chassis/house battery radio power switch**

**Power steering** w/tilt wheel

**Power mirrors** w/defrost

**Cruise control**

**Map lights**

**Dash workstation** w/USB and 12-volt powerpoint

**Convenience tray**

**Instrument panel**

### OPTIONAL EQUIPMENT

**6-way power driver seat**

**Passenger seat** w/footrest

**Dual-speed defroster fans**

**SiriusXM® satellite radio prep, receiver, antenna** (includes 90-day trial subscription)

**Sideview video camera system**

## Interior

**32" HDTV** (front 30T)

**39" HDTV** (35F)

**48" HDTV** (27N, 35B)

**Amplified digital TV antenna system**

**Video selection system**

**Satellite system ready**

**MCD solar/blackout roller shades** (in select areas)

**OnePlace® systems monitor**

**Powered ventilator fan** (lounge)

**Powered ventilator roof vent** (27N bedroom)

**Powered roof vent** (bath)

**Tinted dual-pane windows**

**LED lights**

**Electric fireplace** (35F)

**Washer/dryer prep** (35F)

### OPTIONAL EQUIPMENT

**StudioLoft™** (powered w/ladder)

**Dining table/buffet/chairs** w/retractable 40" HDTV (30T)

**32" HDTV** (front) (27N, 35B)

**Vinyl flooring** throughout

**Washer/dryer** (35F)

## Galley

**Corian countertops** w/decorative backsplash and sink covers

**Flip-up countertop extension** (NA 27N)

**2-door refrigerator/freezer** (NA 35F)

**2-door residential refrigerator** (35F)

**Microwave oven** (30T)

**Microwave oven** w/range fan (NA 30T)

**3-burner range top** w/covers and storage below

**Vented range hood** (30T)

**Pantry**

## OPTIONAL EQUIPMENT

**3-burner range** w/oven

**4-door refrigerator/freezer** w/icemaker and water purifier (35B, 35F)

**Microwave/convection oven** (30T)

**Microwave/convection oven** w/range fan (NA 30T)

## Bath

**Laminate countertop** w/decorative backsplash

**Flexible showerhead**

**Textured glass shower door**

**Skylight**

**Porcelain toilet(s)** w/foot pedal and sprayer

**Medicine cabinet** (NA 27N)

**Linen cabinet** (27N)

**Tissue holder**

**Robe hook(s)** (27N, 30T)

**Towel bar(s)** (NA 27N)

**Towel ring(s)**

## Bedroom

**Queen bed** w/innerspring mattress and storage below

**Bedsread, pillows, and shams**

**Headboard**

**Bunk beds** w/foam mattresses, mattress covers, and privacy curtains (35B)

## OPTIONAL EQUIPMENT

**2 DVD players** w/10.1" LCD monitors and headphones (35B bunk beds)

**24" HDTV** (27N, 30T)

**28" HDTV** (35B)

**32" HDTV** (35F)

## Exterior

**Premium high-gloss sidewall skin**

**Automatic entrance door steps**

**Powered patio awning**

**Front mud flaps**

**Porch light** w/interior switch

**Incandescent lighted storage compartments** (in select compartments)

**Ladder**

## OPTIONAL EQUIPMENT

**Lower front protective mask** (requires full-body paint option)

**Entertainment Center 32" HDTV** w/remote, AM/FM stereo w/DVD player w/remote, speakers (NA 30T)

**Entertainment Center** w/CD player, removable TV table, AM/FM radio, lockable compartment (30T)

## Heating & Cooling System

**14,800 BTU air conditioner** w/ChillGrille™ (27N, 30T)

**2 high-efficiency air conditioners** w/ChillGrille and Energy Management System (35B, 35F)

**30,000 BTU low-profile furnace** (27N, 30T)

**40,000 BTU low-profile furnace** (35B, 35F)

## OPTIONAL EQUIPMENT

**Air conditioner heat pump** (27N, 30T)

**2 high-efficiency air conditioner heat pumps** (35B, 35F)

**All-Weather Upgrade Package** (30T) 5,500-watt Cummins Onan® Marquis Gold™ gas generator, 2nd high efficiency A/C with heat pumps, 50-amp. power cord, automatic changeover switch, shoreline/generator, Powerline Energy Management System

## Electrical System

**AC/DC load center, 55-amp. converter/charger** (27N, 30T)

**AC/DC electrical distribution system, 55-amp. converter/charger** (35B, 35F)

**30-amp. power cord** (27N, 30T)

**50-amp. power cord, shoreline/generator automatic changeover switch** (35B, 35F) (30T: See All-Weather Upgrade Package information/Heating & Cooling System)

**PowerLine® Energy Management System** with display (35B, 35F) (30T: See All-Weather Upgrade Package information/Heating & Cooling System)

**Energy Management System** without display (27N) (30T: Without All-Weather Upgrade Package Information/Heating & Cooling System)

**4,000-watt Cummins Onan MicroQuiet™ gas generator** (27N, 30T)

**5,500-watt Cummins Onan Marquis Gold gas generator** (35B, 35F) (30T: See All-Weather Upgrade Package information/Heating & Cooling System)

**2 deep-cycle Group 24 batteries** (NA 35F)

**4 deep-cycle Group 31 batteries** (35F: Qty. of 2 Group 31 batteries w/optional 4-door refrigerator/freezer)

**Battery disconnect system** (chassis and coach)

**Automatic dual-battery charge control**

**Auxiliary start circuit**

**AC duplex receptacle**

**Cable TV input**

**Portable satellite dish hookup, power cord**

**Exterior antenna jack**

**2,000-watt AC/DC inverter** w/remote panel (35F)

**Automatic start generator** (35F)

## OPTIONAL EQUIPMENT

**1,000-watt AC/DC inverter** w/remote panel (NA 35F)

## Plumbing System

**Service Center** colored labels, pressurized city water hookup w/diverter valve, drainage valves, exterior wash station w/lighted pump switch, 10' sewer hose

**6-gallon 110-volt/LP water heater** w/motoraid (NA 35F)

**10-gallon 110-volt/LP water heater** w/motoraid (35F)

**Heated holding tank compartment**

**Permanent-mount LP tank** w/gauge

**On-demand water pump**

**TrueLevel™ holding tank monitoring system**

**Winterization Package** water heater bypass valve and siphon tube

**LPG accessory connection** (patio area)

**Gravity tank fill** w/lockable door (NA 35B)

**Holding tank flushing system** (black tank only)

**Sewage pump** (macerator) (35F)

## Safety

**Child seat tether anchor** (forward facing dinette seat)

**LP, smoke, and carbon monoxide detectors**

**10 BC fire extinguisher**

**Ground fault interrupter**

**High-mount brake lamp**

## Warranty<sup>7</sup>

**12-month/15,000-mile basic limited warranty<sup>8</sup>**

**36-month/36,000-mile limited warranty on structure<sup>8</sup>**

**10-year limited parts-and-labor warranty on roof skin<sup>8</sup>**

### FOOTNOTES

- The height of each model is measured to the top of the tallest standard feature and is based on the curb weight of a typically equipped unit. The actual height of your vehicle may vary by several inches depending on chassis or equipment variations. Please check with your dealer for further information.
- Floorplans feature a wide-body design - over 96" In making your purchase decision, you should be aware that some states restrict access on some or all state roads to 96" in body width. Before making your purchase decision, you should confirm the road usage laws in the states of interest to you.
- The load capacity of your motorhome is designated by weight, not by volume, so you cannot necessarily use all available space when loading your motorhome.
- Capacities are based on measurements prior to tank installation. Slight capacity variations can result due to installation applications.
- Capacities shown are tank manufacturer's listed water capacity (W.C.). Actual filled LP capacity is 80% of listing due to overfilling prevention device on tank.
- Actual towing capacity is dependent on your particular loading and towing circumstances which includes the GVWR, GAWR, and GCWR as well as adequate trailer brakes. Please refer to the Operator's Manual of your vehicle for further towing information.
- See separate chassis warranty.
- See your dealer for complete warranty information.

NA Not Available

Not all items available in combination. See dealer for details.

Winnebago's® continuing program of product improvement makes specifications, equipment, model availability, and prices subject to change without notice. Published content reflects the most current product information at time of printing. Please consult your dealer for individual vehicle features and specifications.



Let us host  
your next

# Adventure



[WGOAdventures.com](http://WGOAdventures.com)



**WINNEBAGO**<sup>TM</sup>  
RV INSURANCE



From RV to personal insurance, Winnebago RV Insurance can provide all the coverage and services you need to feel at home on the road.

**For more information:**  
**(800) 642-4892**

Connect with Winnebago (Click one of the following)



Like us



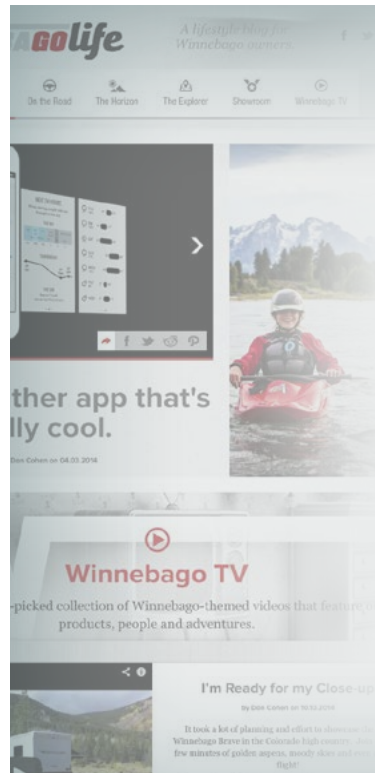
Follow us



Watch us

## WinnebagoInd.com Has All The Answers

Visit [WinnebagoInd.com](http://WinnebagoInd.com) on your computer, smartphone, or tablet for the latest product information and updates.



## Welcome to GoLife!

Visit our lifestyle blog for motorhome news, personal travelogues, and community stories.

**[WinnebagoLife.com](http://WinnebagoLife.com)**

**GoLife**



# **PREFERRED CARE PROGRAM**

We back our motorhomes with best-in-class support both before and after the sale:

- 12-month/15,000-mile basic limited warranty
- 36-month/36,000-mile limited warranty on structure
- 10-year limited parts-and-labor warranty on fiberglass roof
- Complimentary 24-hour roadside assistance program
- TripSaver® Fast Track Parts guarantees that in-stock warranty parts ship directly to your dealer within 24 hours
- National dealer service network



For more information:  
[WGOService.com](http://WGOService.com)



## **WIT CLUB**

### Join the Club, Join the Fun

Here's the perfect way to begin your life on the road as the owner of a new Winnebago – by joining the exclusive WIT Club. Start your adventure with other fun-loving WIT Club members from across the country and get the most out of your new Winnebago motorhome.



#### Members enjoy:

- Caravans and rallies
- Newsletters
- Local and state group activities
- RV travel benefits

See more at  
[WITClub.com](http://WITClub.com)



### Grand National Rally

Each year, thousands of Winnebago owners descend upon Forest City, Iowa. Rally-goers enjoy an unforgettable week reconnecting with friends, taking tours, participating in activities, and more. Join the adventure next July!

# **WINNEBAGO**<sup>IND</sup>

## CONTACT US

### GENERAL INQUIRIES

Corporate Switchboard  
(641) 585-3535

### CURRENT PRODUCT OWNER AND SERVICE-RELATED INQUIRIES

(800) 537-1885  
or [winnebagoind.com](mailto:winnebagoind.com)

### NEW VEHICLE SALES INQUIRIES

[sales@winnebagoind.com](mailto:sales@winnebagoind.com)

### FAX

(641) 585-6966

### POSTAL ADDRESS

Winnebago Industries, Inc.  
P.O. Box 152  
Forest City, IA 50436

### STREET ADDRESS

Winnebago Industries, Inc.  
605 West Crystal Lake Road  
Forest City, IA 50436