



Dutchmen[®]

Legendary Innovation. Trailblazing Value.

TRAVEL TRAILERS AND FIFTH WHEELS

DENALI



SETTING THE STANDARD IN
AFFORDABLE LUXURY



DENALI

AFFORDABLE LUXURY



Whether you are a family exploring the Grand Canyon or a retired couple relaxing on the Gulf of Mexico's shores, the Denali provides unsurpassed comfort and residential amenities where other products fall short.



DENALI 316RES | TIMBERLAND

EXPANDED STORAGE

Now you can take it all with Denali's easy-to-load pass-through basement storage and under-bed storage. Plus, our kitchens provide plenty of cabinet, drawer and pantry space to hold all of your favorite snacks.



UNDER-BED STORAGE



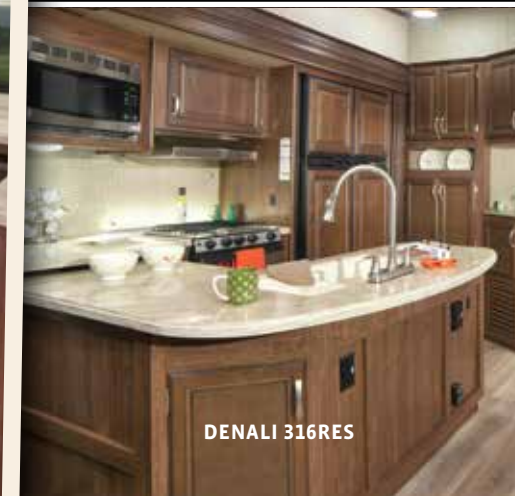
PASS-THROUGH BASEMENT STORAGE



KITCHEN STORAGE GALORE
DENALI 350FK

COUNTERTOP

Denali's solid-surface, bevel-edge countertops add style to your kitchen, while standard sink covers create even more counterspace for all of your cooking needs.



DENALI 316RES

12 CUBIC FOOT REFRIGERATOR

Whip together a party-sized meal for the whole family thanks to Denali's 8 cu. ft. refrigerator with raised-panel hardwood front.



DENALI 316RES

RESIDENTIAL UPGRADES

With a focus on luxury, style and craftsmanship, Denali delivers ...

- ◆ Raised-panel hardwood cabinet doors and drawers
- ◆ Full-height pantry with full-access cabinets and ball-bearing drawer guides
- ◆ Backsplash in kitchen with LED lighting
- ◆ Oven with a three-burner cooktop and piezo igniter
- ◆ Residential microwave with turntable
- ◆ Large pots and pans drawers in galley
- ◆ LED lighting
- ◆ Pleated night shades
- ◆ Premium flooring
- ◆ Residential carpet
- ◆ Tinted safety-glass windows
- ◆ Porcelain foot-flush toilet
- ◆ Undermount galley sink with cover



DENALI 318RB | SIENNA RIDGE



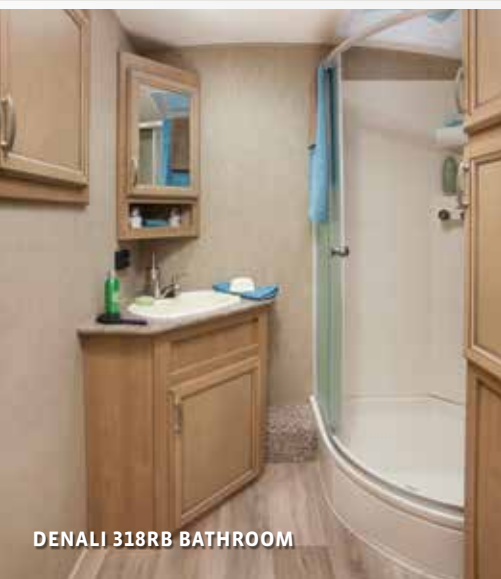
DENALI WIDE-OPEN SPACES

UNWIND & RELAX

With a flush-floor master bedroom and an extra five inches of height, Denali adds more comfort to your fifth wheel space than ever before.



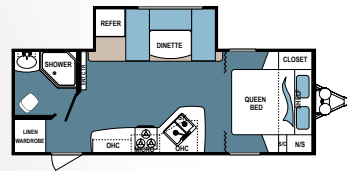
DENALI 318RB | SIENNA RIDGE



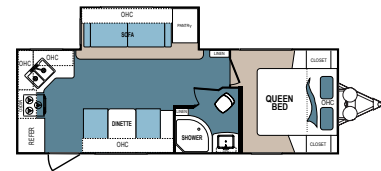
DENALI 318RB BATHROOM



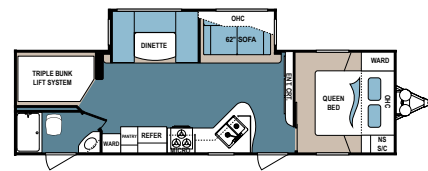
DENALI 318RB | SIENNA RIDGE



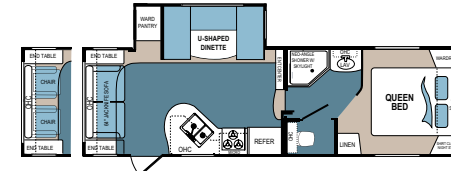
DENALI TRAVEL TRAILER | 2371RB
Ext. Length: 27' 6" Ext. Height: 11'
Average Shipping Weight: 5,751 Sleeps: 2-3



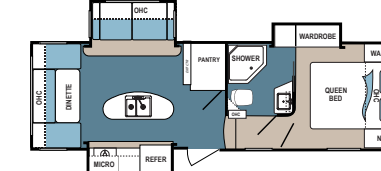
DENALI TRAVEL TRAILER | 2462RK
Ext. Length: 28' 11" Ext. Height: 11' 2"
Average Shipping Weight: 6,275 Sleeps: 3-4



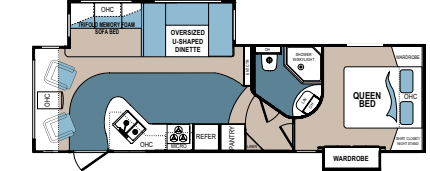
DENALI TRAVEL TRAILER | 2611BH
Ext. Length: 33' 10" Ext. Height: 10' 11"
Average Shipping Weight: 7,198 Sleeps: 5-7



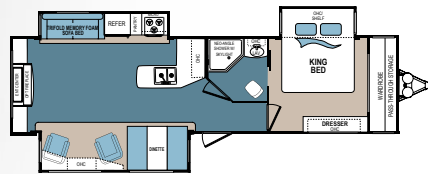
DENALI LITE FIFTH WHEEL | 2445RL
Ext. Length: 28' 6" Ext. Height: 11' 10"
Average Shipping Weight: 7,164 Sleeps: 2-4



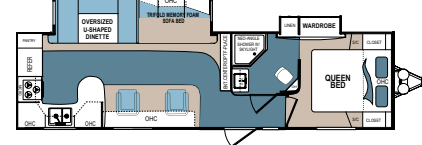
DENALI FIFTH WHEEL | 257RDS
Ext. Length: 29' 11" Ext. Height: 13'
Average Shipping Weight: 8,077 Sleeps: 2-3



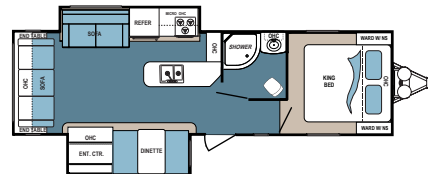
DENALI FIFTH WHEEL | 262RLX
Ext. Length: 31' 5" Ext. Height: 12'
Average Shipping Weight: 7,980 Sleeps: 3-5



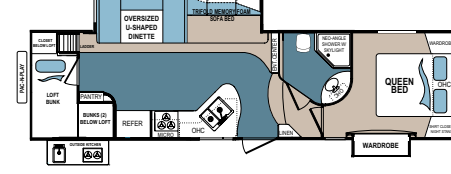
DENALI TRAVEL TRAILER | 287RE
Ext. Length: 36' 9" Ext. Height: 11' 4"
Average Shipping Weight: 8,411 Sleeps: 3-4



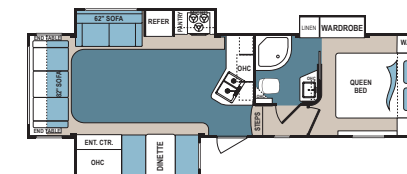
DENALI TRAVEL TRAILER | 289RK
Ext. Length: 34' 8" Ext. Height: 11' 2"
Average Shipping Weight: 7,746 Sleeps: 3-4



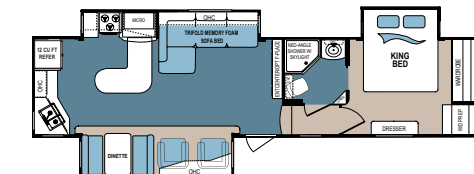
DENALI TRAVEL TRAILER | 2975RL
Ext. Length: 33' 9" Ext. Height: 11' 7"
Average Shipping Weight: 7,250 Sleeps: 3-4



DENALI FIFTH WHEEL | 280LBS
Ext. Length: 33' 10" Ext. Height: 12' 5"
Average Shipping Weight: 8,778 Sleeps: 3-5



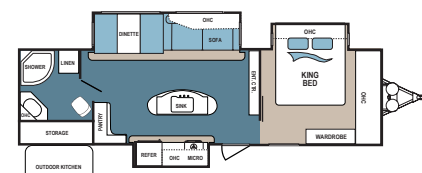
DENALI LITE FIFTH WHEEL | 2901RL
Ext. Length: 32' 9" Ext. Height: 12' 7"
Average Shipping Weight: 8,517 Sleeps: 6



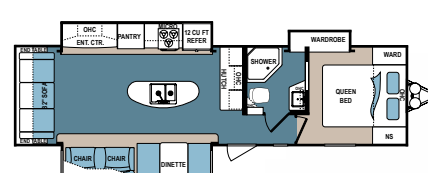
DENALI FIFTH WHEEL | 293RKS
Ext. Length: 37' 11" Ext. Height: 11' 11"
Average Shipping Weight: 10,024 Sleeps: 2-4



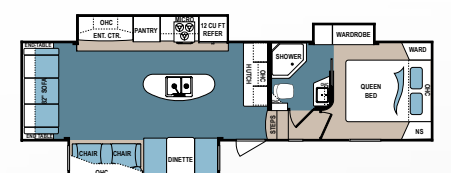
DENALI TRAVEL TRAILER | 3155BH
Ext. Length: 35' 9" Ext. Height: 11' 7"
Average Shipping Weight: 7,848 Sleeps: 10



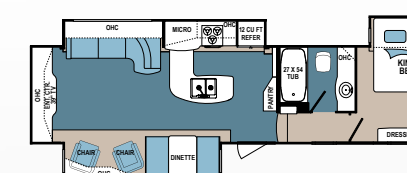
DENALI TRAVEL TRAILER | 318RB
Ext. Length: 35' 1" Ext. Height: 11' 6"
Average Shipping Weight: 8,110 Sleeps: 3-4



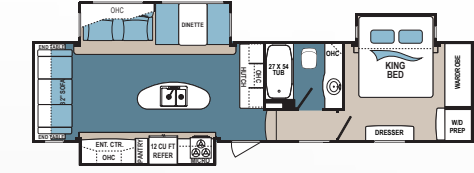
DENALI TRAVEL TRAILER | 325RL
Ext. Length: 35' 11" Ext. Height: 11' 7"
Average Shipping Weight: 8,587 Sleeps: 3-4



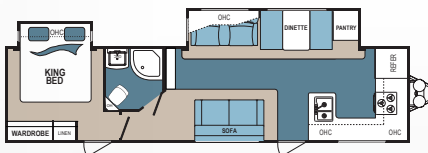
DENALI FIFTH WHEEL | 307RLS
Ext. Length: 35' 4" Ext. Height: 12' 2"
Average Shipping Weight: 9,422 Sleeps: 2-4



DENALI FIFTH WHEEL | 316RES
Ext. Length: 39' 3" Ext. Height: 12' 3"
Average Shipping Weight: 10,297 Sleeps: 3-4



DENALI FIFTH WHEEL | 335RLK
Ext. Length: 37' 6" Ext. Height: 13'
Average Shipping Weight: 9,929 Sleeps: 8



DENALI TRAVEL TRAILER | 350FK
Ext. Length: 38' 7" Ext. Height: 11' 7"
Average Shipping Weight: 8,413 Sleeps: 6

DENALI TRAVEL TRAILER SPECIFICATIONS

DIMENSIONS		WEIGHTS (LBS.)				TANKS (GALS.)				
MODEL	FLOORPLAN	*EXTERIOR TRAVEL LENGTH	EXTERIOR WIDTH	EXTERIOR HEIGHT (WITH A/C)	**AVERAGE SHIPPING WEIGHT	DRY HITCH WEIGHT	CARGO CARRYING CAPACITY	***FRESH WATER CAPACITY	GREY WATER CAPACITY	BLACK WATER CAPACITY
Travel Trailer	2371RB	27' 6"	96"	11'	5,751	670	3,089	52	42	42
	2462RK	28' 11"	96"	11' 2"	6,275	815	3,405	52	84	42
	2611BH	33' 10"	96"	10' 11"	7,198	932	2,482	63	42	42
	287RE	36' 9"	96"	11' 4"	8,411	938	2,765	56	48	48
	289RK	34' 8"	96"	11' 2"	7,746	972	1,934	56	84	42
	2975RL	33' 9"	96"	11' 7"	7,250	856	2,430	63	46	46
	3155BH	35' 9"	96"	11' 7"	7,848	1,136	1,832	63	33	42
	318RB	35' 1"	96"	11' 6"	8,110	1,086	1,570	67	90	48
	325RL	35' 11"	96"	11' 7"	8,587	978	2,589	56	76	48
	350FK	38' 7"	96"	11' 7"	8,413	1,099	2,763	67	96	48

*Length is defined as the distance from the centerline of hitch pin/coupler to rear bumper of trailer. **Our weights represent how most units are built, inclusive of many commonly-ordered options. ***Fresh water capacity includes water heater capacity.

DENALI FIFTH WHEEL SPECIFICATIONS

DIMENSIONS		WEIGHTS (LBS.)			TANKS (GALS.)					
MODEL	FLOORPLAN	*EXTERIOR TRAVEL LENGTH	EXTERIOR WIDTH	EXTERIOR HEIGHT (WITH A/C)	**AVERAGE SHIPPING WEIGHT	DRY HITCH WEIGHT	CARGO CARRYING CAPACITY	***FRESH WATER CAPACITY	GREY WATER CAPACITY	BLACK WATER CAPACITY
Fifth Wheel	2445RL	28' 6"	96"	11' 10"	7,164	1,386	3,396	52	84	42
	257RDS	29' 11"	96"	13'	8,077	1,842	2,483	63	81	48
	262RLX	31' 5"	96"	12'	7,980	1,639	2,580	56	75	42
	280LBS	33' 10"	96"	12' 5"	8,778	1,737	1,782	56	90	48
	2901RL	32' 9"	96"	12' 7"	8,517	1,810	2,043	63	48	48
	293RKS	37' 11"	96"	11' 11"	10,024	2,012	2,168	67	81	48
	307RLS	35' 4"	96"	12' 2"	9,422	1,986	2,770	56	96	48
	316RES	39' 3"	96"	12' 3"	10,297	2,060	1,895	67	96	48
	335RLK	37' 6"	96"	13'	9,929	2,194	2,551	67	96	48

*Length is defined as the distance from the centerline of hitch pin/coupler to rear bumper of trailer. **Our weights represent how most units are built, inclusive of many commonly-ordered options. ***Fresh water capacity includes water heater capacity.

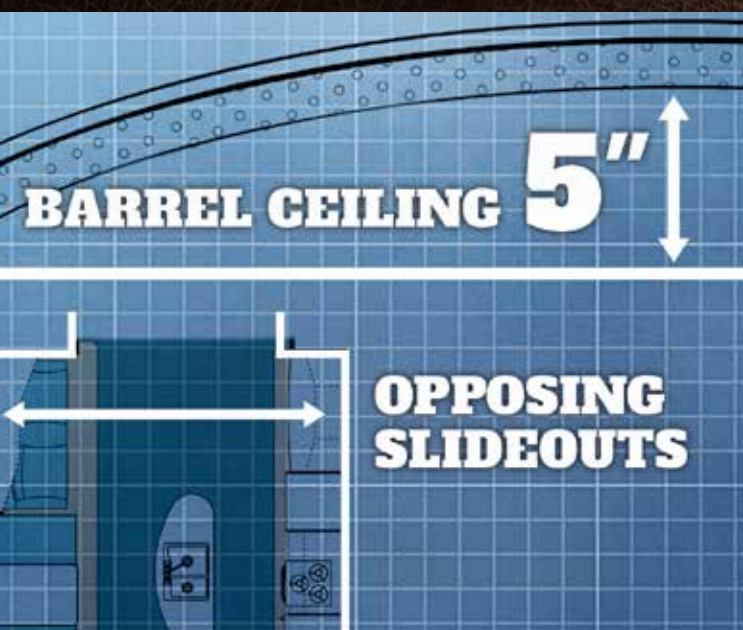
DISCLAIMER: Product information is as accurate as possible as of brochure publication date. All features, floor plans and specifications in this brochure are subject to change without notice. Please consult Dutchmen's website at www.Dutchmen.com for current product information and specifications. Tow Vehicle Disclaimer. **CAUTION:** Owners of Dutchmen recreational vehicles are solely responsible for the selection and proper use of tow vehicles. All customers should consult with a motor vehicle manufacturer or their dealer concerning the purchase and use of suitable tow vehicles for Dutchmen products. Dutchmen disclaims any liability or damages suffered as a result of the selection, operation, use or misuse of a tow vehicle. DUTCHMEN'S LIMITED WARRANTY DOES NOT COVER DAMAGE TO THE RECREATIONAL VEHICLE OR THE TOW VEHICLE AS A RESULT OF THE SELECTION, OPERATION, USE OR MISUSE OF THE TOW VEHICLE. REFERENCE DUTCHMEN MANUFACTURING OWNERS MANUAL FOR LIMITED WARRANTY DETAILS.



DENALI 316RES | TIMBERLAND

LUXURY IS IN THE DETAILS

Denali's 5-inch barrel ceiling and opposing slideouts offer sizable interior height and width. These wide open spaces will brighten your living space, increase your comfort and make you wish your trip never ended.



DENALI STANDARDS AND OPTIONS

DENALI SUMMIT PACKAGE

- 15' sprayer hose with quick connect
- 13,500-BTU ducted air conditioner
- 30,000- to 34,000-BTU forced air furnace
- Aluminum wheels
- Ball-bearing drawer guides throughout
- Barrel ceiling with walnut trim (TT only)
- Brushed nickel hardware and fixtures
- Command Center with all switches and monitors in one location
- Dinettes with pull-out drawers
- Expanded turning radius front cap
- Eye Sight Hitch Vision with LED lights in the front cap (fifth wheel models)
- E-Z Lube axles
- Four (4) interior speakers with zone switch
- Full-height pantry, full-access cabinets
- Slideout fascia with antique finish
- Heated and enclosed underbelly and gate valves
- High-rise kitchen faucet with sprayer
- Large pots and pans drawers in galley
- LED lighting at cabinet base in kitchen
- LED TV in living area

- Propane quick connection
- Media Center: Bluetooth Stereo with USB and auxiliary
- Backsplash in kitchen with LED lighting
- Oven with 3-burner cooktop and piezo igniter
- Oyster fiberglass
- Pleated night shades
- Porcelain foot flush toilet
- Premium flooring
- Pushback-style recliners (select models)
- Quick-connect power cord
- Radial tires
- Hardwood cabinet doors and drawers
- RCA cable from stereo to TV
- Residential carpet
- Residential microwave with turntable
- Roof ladder
- Satellite and cable prep
- Serving tray sink cover
- Skylight over tub and shower
- Solid-surface countertops
- Spare tire with carrier and cover
- Tinted safety-glass windows

- TV cable and electrical hookups under awning
 - Under-mount galley sink with cover
 - Utility management center (fifth wheels)
 - TV antenna with booster
- ### PREMIUM PACKAGE
- Power awning with LED lighting
 - Raised-panel hardwood refrigerator front
 - Slam-latch baggage doors
 - Tinted safety-glass windows

- ### LUXURY PACKAGE
- 8 cu. ft. refrigerator
 - DSI water heater with quick recovery
 - Barrel ceiling with Walnut Yacht trim (travel trailer only)
 - Friction-hinge main entry
 - Painted gel-coated front cap with LED lighting
 - Stainless-steel appliances

- ### MANDATORY OPTIONS
- 50-amp service with prep for 2nd A/C
 - Black tank flush
 - Denali Summit Package
 - Destination tri-fold sofa

- Luxury Package
- NitroFill (nitrogen-filled tires)
- Outside speakers
- Premium Package
- Thermal Package
- 12 cu. ft. refrigerator (select models)

- ### OPTIONAL EQUIPMENT
- 13,500-BTU bedroom A/C
 - 15,000-BTU living area A/C in place of 13,500-BTU
 - Two residential recliners (select models)
 - Bike rack with spare tire
 - Central vacuum system
 - CSA construction and seal
 - Dual-pane windows (frameless)
 - Electric four-point leveling system
 - Electric front and rear stabilizer jacks (select models)
 - Fireplace
 - Free-standing dinette table with four chairs
 - Power tongue jack
 - Wireless backup camera

INNOVATIVE SPACE

Our multi-purpose sleeping room has two retractable— height-adjustable bunks, a play space and extra storage.



DENALI 2611BH & 3155BH

DISCLAIMER: Product information is as accurate as possible as of brochure publication date. All features, floor plans and specifications in this brochure are subject to change without notice. Please consult Dutchmen's website at www.Dutchmen.com for current product information and specifications. **CAUTION:** Owners of Dutchmen recreational vehicles are solely responsible for the selection and proper use of tow vehicles. All customers should consult with a motor vehicle manufacturer or their dealer concerning the purchase and use of suitable tow vehicles for Dutchmen products. Dutchmen disclaims any liability or damages suffered as a result of the selection, operation, use or misuse of a tow vehicle. **DUTCHMEN'S LIMITED WARRANTY DOES NOT COVER DAMAGE TO THE RECREATIONAL VEHICLE OR THE TOW VEHICLE AS A RESULT OF THE SELECTION, OPERATION, USE OR MISUSE OF THE TOW VEHICLE. REFERENCE DUTCHMEN MANUFACTURING OWNERS MANUAL FOR LIMITED WARRANTY DETAILS.**

iN·Command™



Sleek Control Commander touch pad eliminates old-fashioned rocker switches and buttons



Check fresh water and holding tank levels, check battery status, even turn on your water heater



Control slide rooms, interior and exterior lighting, awnings, virtually anything with a motor or switch

✓ NEVER LOSE YOUR REMOTE ✓ MULTIPLE USERS ✓ WHEN YOU HAVE YOUR PHONE, YOU'RE IN-COMMAND

PREMIUM FEATURES THAT WORK FOR YOU!

DENALI DÉCOR

TIMBERLAND



SIENNA RIDGE



STERLING MIST



MAX THERMAL INSULATION

Four types of insulation

Live comfortably in practically any weather. Your Denali's Thermal Insulation Package is stocked with four types of insulation — fiberglass batten, block foam, expandable foam and FlexFoil blanket insulation — all of which make heating and cooling a breeze.

AERODYNAMIC FRONT CAPS

Featuring LED lighting

Our painted fiberglass and clear-coat front caps, are less likely to fade or oxidize over time compared to our competitors, giving your Denali a high-end look for years to come.

ELECTRIC AWNING

Boasting LED light strip

Denali always gives you more. Unlike other manufacturers, our easy-to-use electric awning with LED light strip comes standard in all Denali units. It provides a cool and comfortable shade, doubles as a windbreaker and adds more light to evenings spent outside your RV.

DISCLAIMER: Product information is as accurate as possible as of the brochure publication date. All features, floor plans and specifications in this brochure are subject to change without notice. Please consult Dutchmen's website at www.Dutchmen.com for current product information and specifications. Tow Vehicle Disclaimer. **CAUTION:** Owners of Dutchmen recreational vehicles are solely responsible for the selection and proper use of tow vehicles. All customers should consult with a motor vehicle manufacturer or their dealer concerning the purchase and use of suitable tow vehicles for Dutchmen products. Dutchmen disclaims any liability or damages suffered as a result of the selection, operation, use or misuse of a tow vehicle. DUTCHMEN'S LIMITED WARRANTY DOES NOT COVER DAMAGE TO THE RECREATIONAL VEHICLE OR THE TOW VEHICLE AS A RESULT OF THE SELECTION, OPERATION, USE OR MISUSE OF THE TOW VEHICLE. REFERENCE DUTCHMEN MANUFACTURING OWNERS MANUAL FOR LIMITED WARRANTY DETAILS.



ALUMINUM STEPS

Step in and out of your RV more comfortably with the upgraded aluminum entry steps.



ELECTRONIC LEVELING SYSTEM

With the push of a button, the Electronic Leveling System will lower the stabilizer jacks and automatically level your unit, but can also be manually directed if necessary.

AFFORDABLE LUXURY



DUTCHMEN—A NORTH AMERICAN CAMPGROUND CLASSIC

Few manufacturers have built RVs for 25+ years, and only one has set the standard for innovation AND value. Dutchmen IS “A North American Campground Classic.”



Dutchmen[®]

Legendary Innovation. Trailblazing Value.

MORE STANDARD FEATURES MORE VALUE

Dutchmen RVs turn more heads on the lot and in the campground than any other. Why? While other manufacturers offer features as options, Dutchmen tends to make those same features standard. Call it “bang for the buck,” “more for your money,” or simply “more value.” **We’ve built a reputation for bringing RV owners more standard features for less money** for more than 25 years . . . and it’s a reputation we plan to keep.

300 STRONG

NATION WIDE DEALER NETWORK

More than 300 Dutchmen dealers across North America and our industry-leading service center in Goshen, Indiana, combine for your peace of mind before, during and after the sale. Rest assured no matter where your travels take you, **the best-resourced RV manufacturing company in the world is behind you all the way.**

PO BOX 2000 • 2164 Caragana Court
Goshen, Indiana 46527 Sales: 574.537.0600
www.dutchmen.com

At Dutchmen, quality is our standard. **Every single Dutchmen RV that comes off the line receives its own pre-delivery inspection.**

Typically, a competitor performs random inspections, meaning you won’t find this commitment to quality anywhere else.



Scan this QR Code for the most up to date floorplans and specifications.



www.dutchmen.com

Visit us online to see all of the Dutchmen brands, innovative models and spacious floor plans.

Your local dealer

From giving advice to servicing products, we consider our loyal dealers the best resource for learning about Dutchmen products.

DEN-HM0216-36k