

CORNERSTONE | ANTHEM | ASPIRE | INSIGNIA

2017

THE QUIETEST RIDING, BEST HANDLING COACH
ON THE MARKET TODAY. **PERIOD.**



ENTEGRA
COACH®



THE LUXURY YOU DESERVE



THE NEXT GENERATION OF MOTORCOACHES IS HERE

Packed with technology that's never been seen on a motorcoach before, the 2017 Entegra Coach lineup sets the new standard for all-the-time comfort and on-the-road safety.

- En-telligent™ VegaTouch command center with larger touchscreen controls and HDMI® input
- Blind spot monitoring
- En-telligent Collision Mitigation System from OnGuard™ automatically brakes in dangerous situations
- Electronic stability control automatically slows the coach on extreme grades
- Pulsing third brake light signals when the coach is slowing down
- Low-beam LED headlights

*Some features not available on all models

THE QUIETEST RIDING, BEST HANDLING COACH ON THE MARKET TODAY. PERIOD.

HERE'S WHY:

1. SPARTAN® CHASSIS

With more than 30 years' history of custom chassis manufacturing, Spartan gives us the industry's premier foundation.

2. EXCLUSIVE X-BRIDGE™ FRAME

It's what we add to the chassis that really sets us apart: Our exclusive X-Bridge frame adds even more floor strength and structural rigidity, eliminating chassis flex and twisting; with it, the suspension—not the chassis—absorbs road shock and vibration.

3. WOOD FLOOR CONSTRUCTION

Our five-inch wood floors are laid on top of our reinforced steel subframe, creating one of the industry's thickest floors—reducing energy transmission, noise and vibration.

4. TILE AROUND THE CABINetry

We screw our cabinets directly to the wood floor and then tile around them; other manufacturers place cabinets on top of the tile, causing squeaks or cracking.

5. RESIDENTIAL-STYLE WALLS AND ROOF

Our roof combines crowned aluminum truss rafters on 16-inch centers with Flexfoil®, fiberglass insulation and 3/8-inch plywood decking. Our walls, along with our front and rear caps, feature tucked-and-glued batting insulation—the same kind of fiberglass insulation found in sound-absorbing theater rooms.



ENTEGRA
COACH®



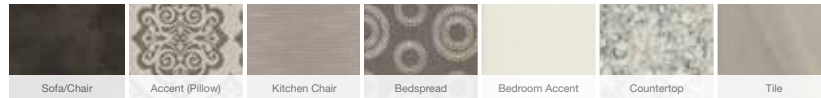
CORNERSTONE



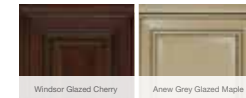
MIDNIGHT PEARL



SILVER LINING



WOOD CHOICES

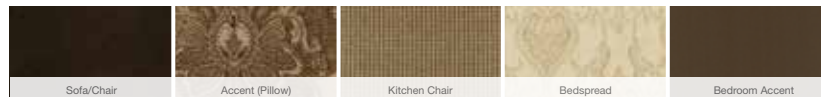


(Silver Lining Only)

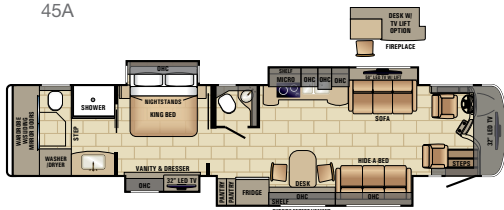
MOCHA



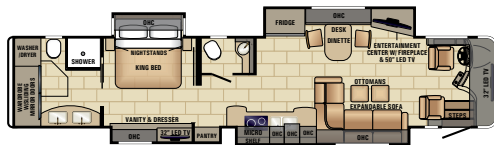
STANFORD



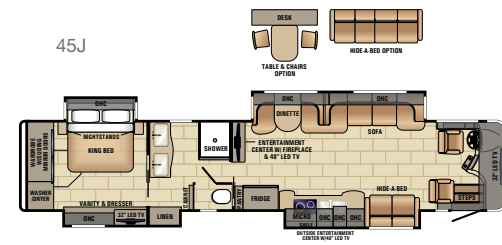
45A



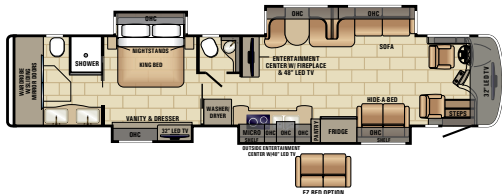
45B



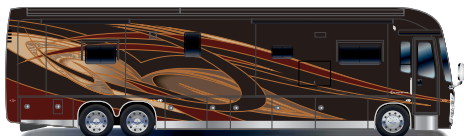
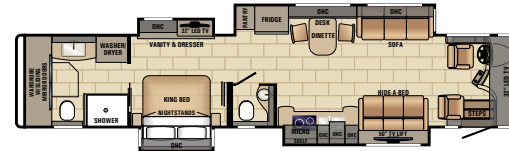
45J



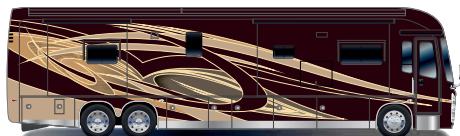
45K



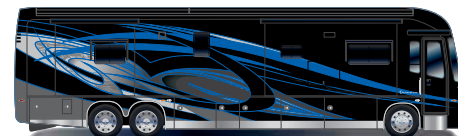
45W



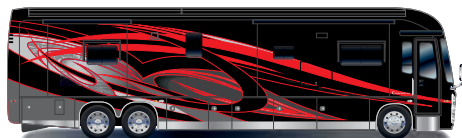
Cayenne



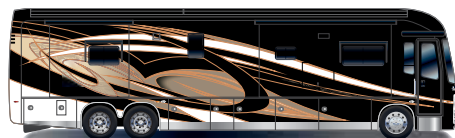
Champagne



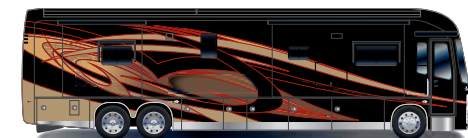
Electric Blue



Fire Red



Sunlit



Topaz

STANDARD CHASSIS EQUIPMENT

Spartan® K3 raised-rail chassis
 Cummins® 15-liter ISX turbocharged 600HP engine, 1,950 lb. ft. torque at 1,200 RPM
 Allison® 4000 MH 6-speed transmission
 Reyco® Granning® IFS independent front air suspension
 Reyco Granning passive-steer tag axle
 Hadley® air leveling system
 20,000-pound hitch with 7/4-pin plug
 Bilstein® shocks: 60mm in front and 46mm on rear tag
 150-gallon fuel tank (dual fill)

STANDARD CONSTRUCTION FEATURES

X-Bridge™ frames welded on to chassis frame
 Enclosed, insulated and heated floor and adjustable heating in storage area
 Flush-mounted, electric-powered slideout rooms with VegaTouch control

HEAT, A/C, POWER AND WATER EQUIPMENT

Aqua-Hot® 450 diesel hydronic water and heating system with in-floor heat
 Onan® 12,500-watt diesel generator with auto-gen start on powered slideout tray
 2,800-watt and 2,000-watt pure sine wave inverter
 L16 AGM batteries (4), (6-volt/390 amp hours each)
 Macerator holding tank dump system with electric gate valves and manual backup system

STANDARD EXTERIOR EQUIPMENT

LED high- and low-beam headlights
 Lighted grab handle with keypad system
 Keyless entry with key fob
 Girard® power entrance door awning with LED lights
 Girard Ultra window shade awning and Ultra slideout awnings
 Roof-mounted Girard Vision dual-pitched patio awning with LED lights
 Chrome, heated, remote-controlled, sideview mirrors with integrated cameras and blind spot indicators
 Exterior 40-inch Samsung® 4K HDTV with articulating arm
 Full-width rear mudflap with chrome "Cornerstone" nameplate

COCKPIT AMENITIES

Air-cooled, 6-way-power, lumbar, heated, leather driver and passenger seats with integrated 3-point safety belts
 VIP soft-touch, wood-grain, leather-wrapped, tilt and telescoping steering wheel with integrated controls
 Single-glass paneled, dual 9-inch touchscreen, in-dash infotainment center
 JBL® premium audio sound system with speakers, amplifier and subwoofer
 Color, adjustable "Total Vision" backup camera and monitor system with side and rear views
 Chrome, LED-lit cup holders

STANDARD INTERIOR EQUIPMENT

En-telligent VegaTouch pad system, for complete integration of coach controls
 High-gloss 12-inch x 24-inch porcelain tile with granite inlay design
 Bose® SoundTouch® 130 home theater system with Bluetooth® in living area
 Bose Solo 15 soundbar in bedroom
 LED-lit electric fireplace
 In-step storage with pullout tray

STANDARD KITCHEN EQUIPMENT

Dimmable LED-lit quartz countertops with stainless steel sink
 Dishwasher with wood-raised panel door front
 Induction cooktop
 Convection microwave oven
 Samsung residential 23-cubic-foot refrigerator with ice maker and water dispenser

STANDARD BEDROOM EQUIPMENT

Tempur-Pedic® Cloud® Prima king-size mattress
 Large cedar-lined wardrobe with automatic lights

STANDARD BATHROOM EQUIPMENT

LED-lit quartz countertops with integrated sink(s)
 Porcelain toilet(s) with push-button flush
 Frameless glass shower door
 Porcelain-tiled shower walls and floor

STANDARD SAFETY EQUIPMENT

En-telligent Collision Mitigation System
 En-telligent blind spot monitoring system
 Security system with glass-shatter sensors
 Motion-sensor security lights (2)
 Smoke alarm
 Carbon monoxide alarm
 Security safe
 Pulsing third brake light
 LED marker and turn lights

OPTIONS

Canadian Standards
 Solar panels (dual 100-watt) with Morningstar® SunSaver™ Duo solar panel charge controller
 2.8-cubic-foot exterior freezer

For a full list of standards and options, visit EntegraCoach.com



ANTHEM



AMBIENCE



Sofa/Chair

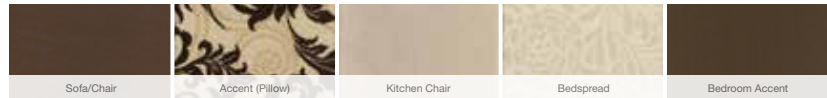
Accent (Pillow)

Kitchen Chair

Bedsread

Bedroom Accent

MAJESTIC



Sofa/Chair

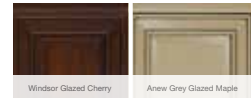
Accent (Pillow)

Kitchen Chair

Bedsread

Bedroom Accent

WOOD CHOICES



Windsor Glazed Cherry

Anew Grey Glazed Maple

(Platinum Only)

BUTTERSCOTCH



Sofa/Chair

Accent (Pillow)

Kitchen Chair

Bedsread

Bedroom Accent

PLATINUM



Sofa/Chair

Accent (Pillow)

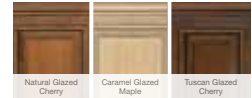
Kitchen Chair

Bedsread

Bedroom Accent

Countertop

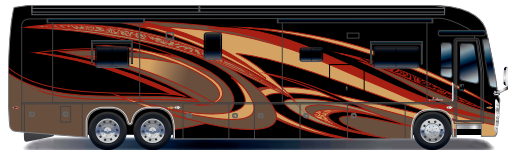
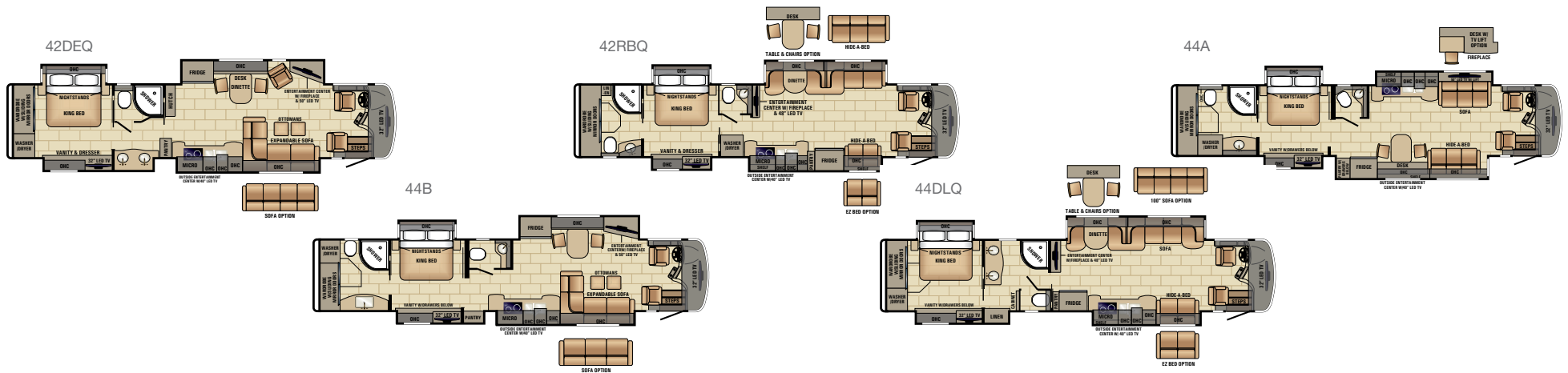
Tile



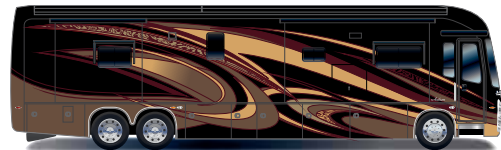
Natural Glazed Cherry

Caramel Glazed Maple

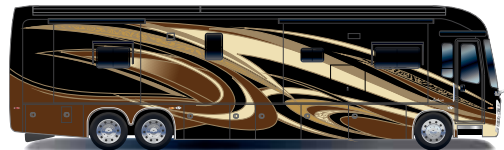
Tuscan Glazed Cherry



Firestorm



Gold Ribbon



Rich Chocolate



Victory Blue

STANDARD CHASSIS EQUIPMENT

Spartan® K2 raised-rail chassis
 Cummins® ISL turbocharged 450 HP engine, 1,250 lb. ft. torque at 1,400 RPM
 Allison® 3000 MH 6-speed transmission
 Reyco® Granning® IFS independent front air suspension
 15,000-pound hitch with 7/4-pin plug
 Bilstein® shocks: 60mm in front and 46mm on rear tag
 150-gallon fuel tank (dual fill)
 55-degree turning radius

STANDARD CONSTRUCTION FEATURES

X-Bridge™ frames welded into chassis frame
 2-inch x 4-inch floor truss construction
 3/4-inch, 7-ply plywood main floor decking

HEAT, A/C, POWER AND WATER EQUIPMENT

Aqua-Hot® 450 diesel hydronic water and heating system with in-floor heat
 Onan® 12,500-watt diesel generator with auto-gen start on powered slideout tray
 2,800-watt and 2,000-watt pure sine wave inverter
 L16 AGM batteries (4), (6-volt/390 amp hours each)
 Macerator holding tank dump system with manual gate valves and manual backup system

STANDARD EXTERIOR EQUIPMENT

LED high- and low-beam headlights
 Lighted grab handle with keypad system
 Keyless entry with key fob
 Chrome, heated, remote-controlled, sideview mirrors with integrated cameras and blind spot indicators
 Exterior 40-inch Samsung® 4K HDTV
 Full-width rear mudflap with chrome "Anthem" nameplate

COCKPIT AMENITIES

Ultra-Vision® one-piece wrap-around tinted windshield
 VIP soft-touch, wood-grain, leather-wrapped, tilt and telescoping steering wheel with integrated controls for radio, cruise and wipers
 Single-glass paneled, dual 9-inch touchscreen, in-dash infotainment center
 JBL® premium audio sound system with speakers, amplifier and subwoofer
 Power-adjustable foot pedals
 Color, dual backup camera and monitor system with side and rear views
 Chrome, LED-lit cup holders

STANDARD INTERIOR EQUIPMENT

En-telligent VegaTouch pad system, for complete integration of coach controls
 High-gloss 12-inch x 24-inch porcelain tile floor
 Samsung 50-inch 4K UHD TV (42DEQ, 44B, 44A)
 Samsung 48-inch 4K UHD TV (44DLQ, 42RBQ)
 Bose® SoundTouch® 130 home theater system with Bluetooth® in living area
 Bose Solo 15 soundbar in bedroom
 In-step storage with pullout tray

STANDARD KITCHEN EQUIPMENT

Dimmable LED-lit, solid-surface countertops with stainless steel sink
 Dishwasher with wood-raised panel door front
 Induction cooktop
 Convection microwave oven
 Samsung residential 23-cubic-foot refrigerator with ice maker and water dispenser

STANDARD BEDROOM EQUIPMENT

Tempur-Pedic® Cloud® Prima king-size mattress
 Large cedar-lined wardrobe

STANDARD BATHROOM EQUIPMENT

LED-lit, solid-surface countertop(s) with integrated sink
 Porcelain toilet(s) with push-button flush
 Porcelain-tiled shower with skylight

STANDARD SAFETY EQUIPMENT

En-telligent blind spot monitoring system
 Security system with glass-shatter sensors
 Motion-sensor security lights (2)
 Smoke alarm
 LED marker and turn lights
 Pulsing third brake light

OPTIONS

Canadian Standards
 Solar panels (dual 100-watt) with Morningstar® SunSaver™ Duo solar panel charge controller
 2.8-cubic-foot exterior freezer
 Desk with Telavator® lift (44A)

For a full list of standards and options, visit IntegraCoach.com



ASPIRE



BAHAMA WIND



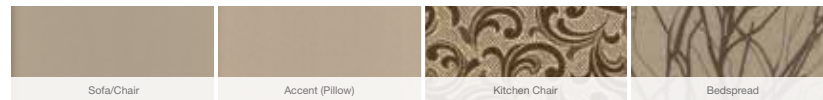
BUTTERCUP



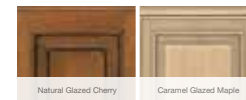
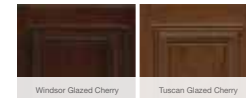
ISLAND PEARL



SILVER CLOUD

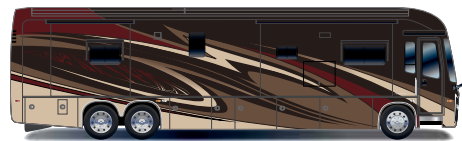


WOOD CHOICES

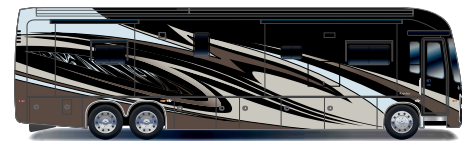




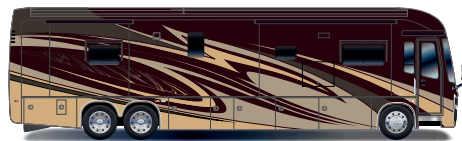
Anniversary Gold



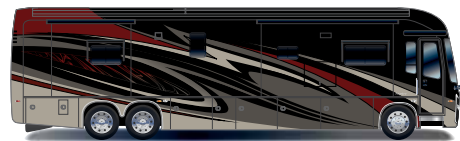
Autumn Berry



California Chrome



Golden Garnet



Sweet Victory



Windswept

STANDARD CHASSIS EQUIPMENT

Spartan® K2 raised-rail chassis
 Cummins® ISL turbocharged 450 HP engine, 1,250 lb. ft. torque at 1,400 RPM
 Allison® 3000 MH 6-speed transmission
 Reyco® Granning® IFS independent front air suspension
 Two-stage engine brake
 Bilstein® shocks

STANDARD CONSTRUCTION FEATURES

X-Bridge™ frames welded into chassis frame
 2-inch x 4-inch floor truss construction
 3/4-inch, 7-ply plywood main floor decking
 Aluma-Tru Superstructure construction on 12-inch - 16-inch centers
 2.5-inch exterior wall with welded tubular aluminum construction and high-gloss, gelcoat fiberglass
 Fiberglass roof with 3/8-inch plywood decking and 4-inch arched aluminum roof truss
 Steel-reinforced front cap and windshield frame

HEAT, A/C, POWER AND WATER EQUIPMENT

Aqua-Hot® 400 diesel hydronic water and heating system with in-floor heat
 Onan® 10,000-watt diesel generator with auto-gen start on slideout tray
 2,800-watt pure sine wave inverter
 L16 AGM batteries (2), (6-volt/390 amp hours each)
 Macerator holding tank dump system with manual gate valves and manual backup system

STANDARD EXTERIOR EQUIPMENT

LED high-beam headlights
 Lighted grab handle with keypad system
 Keyless entry with key fob
 Roof-mounted Girard® Vision dual-pitched patio awning with LED lights
 Heated, remote-controlled, sideview mirrors with integrated cameras
 Exterior 40-inch Samsung® LED HDTV with articulating arm
 Full-width rear mudflap with chrome "Aspire" nameplate

COCKPIT AMENITIES

Ultraleather, power-adjustable driver and passenger seats with integrated 3-point safety belts
 Tilt and telescoping steering wheel with integrated controls
 JBL® premium audio sound system with speakers, amplifier and subwoofer
 Color, dual backup camera and monitor system with side and rear views

STANDARD INTERIOR EQUIPMENT

12-inch x 24-inch porcelain tile floor
 Samsung soundbars (2)
 In-step storage with pullout tray

STANDARD KITCHEN EQUIPMENT

Dimmable LED-lit, solid-surface countertops with stainless steel sink
 Induction cooktop
 Residential convection microwave oven
 Samsung residential 23-cubic-foot refrigerator with ice maker and water dispenser

STANDARD BEDROOM EQUIPMENT

King-size Denver Mattress®
 Automatic lights in wardrobe

STANDARD BATHROOM EQUIPMENT

LED-lit, solid-surface countertop(s) with integrated sink
 Porcelain toilet(s) with push-button flush

STANDARD SAFETY EQUIPMENT

Security system with glass-shatter sensors
 Motion-sensor security lights (2)
 Smoke alarm
 LED marker and turn lights
 Pulsing third brake light

OPTIONS

Canadian Standards
 LED-lit electric fireplace (N/A on 40P, 44R)
 Dishwasher
 Slideout storage tray
 Second Girard patio awning

For a full list of standards and options, visit IntegraCoach.com



INSIGNIA



BRONZE



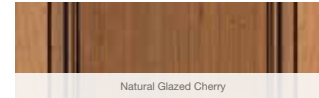
PEARL



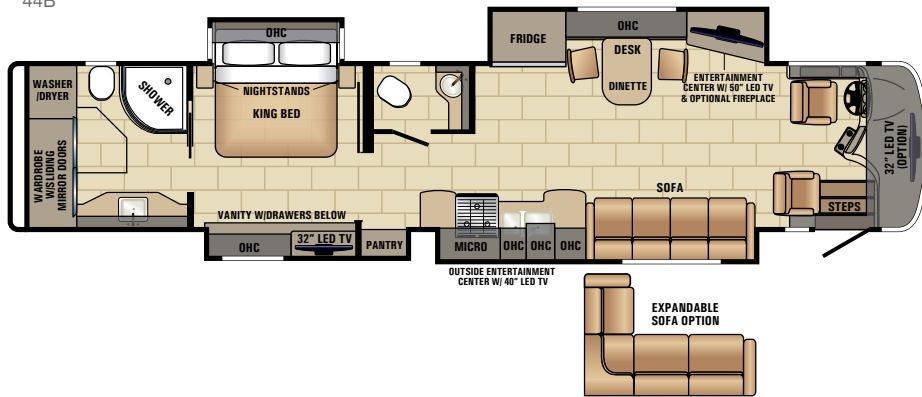
CREAM



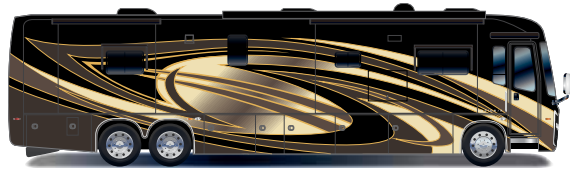
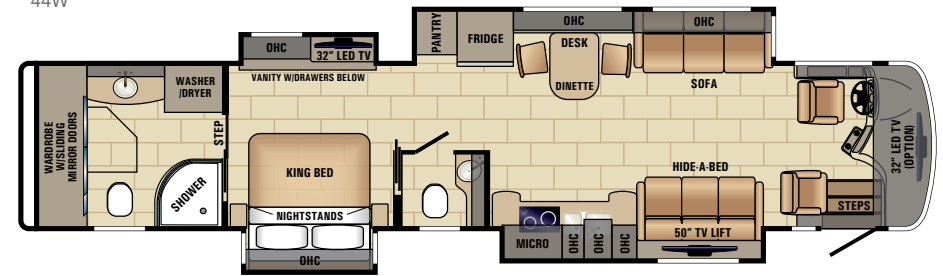
WOOD CHOICE



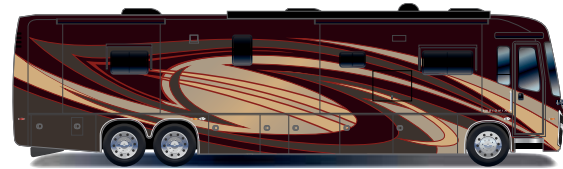
44B



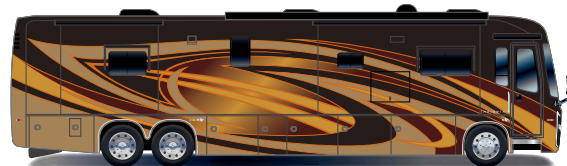
44W



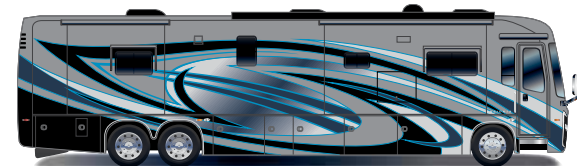
Flash Point



Mahogany Red



Solar Flare



Superior Blue

STANDARD CHASSIS EQUIPMENT

Spartan® K2 raised-rail chassis
 Cummins® ISL turbocharged 450 HP engine, 1,250 lb. ft. torque at 1,400 RPM
 Allison® 3000 MH 6-speed transmission
 1,000-watt engine block heater
 Front axle I-beam, 15,660-pound wide track
 20,000-pound rear axle and 12,000-pound tag axle
 15,000-pound hitch with 7/4-pin plug
 Bilstein® shocks
 100-gallon fuel tank (dual fill)

STANDARD CONSTRUCTION FEATURES

X-Bridge™ frames welded into chassis frame
 2-inch x 4-inch floor truss construction
 3/4-inch, 7-ply plywood main floor decking
 Fiberglass roof with 3/8-inch plywood decking and 4-inch arched aluminum roof truss
 Steel-reinforced front cap and windshield frame

HEAT, A/C, POWER AND WATER EQUIPMENT

50-gallon propane tank
 Aqua-Hot® 400-LP hydronic water and heating system with in-floor heat
 Onan® 10,000-watt diesel generator with auto-gen start on slideout tray
 3,000-watt true sine wave inverter
 L16 batteries (2)
 Macerator holding tank dump system with manual gate valves

STANDARD EXTERIOR EQUIPMENT

Halogen high- and low-beam headlights
 Lighted grab handle with keypad system
 Keyless entry with key fob
 Black, heated, remote-controlled, sideview mirrors with integrated cameras
 Frameless, dual-pane, tinted, safety-glass windows
 40-inch LED HDTV
 Full-width rear mudflap

COCKPIT AMENITIES

Power-adjustable driver and passenger seats with integrated 3-point lap and shoulder safety belts
 Tilt and telescoping steering wheel with integrated controls
 JBL® in-dash touchscreen infotainment system
 JBL premium audio sound system
 Color side and rearview cameras

STANDARD INTERIOR EQUIPMENT

Porcelain tile floor
 Manual solar day and blackout night shades
 Furrion 50-inch LED HDTV
 JBL Boost soundbar

STANDARD KITCHEN EQUIPMENT

LED-lit, solid-surface countertops with stainless steel sink
 Pullout cabinet extension with countertop
 Convection microwave oven
 Whirlpool® residential 20-cubic-foot refrigerator

STANDARD BEDROOM EQUIPMENT

Euro top king-size mattress

STANDARD BATHROOM EQUIPMENT

LED-lit, solid-surface countertop(s) with integrated sink
 Porcelain toilet(s)

STANDARD SAFETY EQUIPMENT

Security lights (3)
 Smoke alarm

OPTIONS

Canadian Standards
 LED-lit electric fireplace
 Front overhead TV
 Solar power prep
 Central vacuum system

For a full list of standards and options, visit EntegraCoach.com

| | Floorplan | GVWR (lbs.) | GCWR (lbs.) | Front GAWR (lbs.) | Rear GAWR (lbs.) | Tag GAWR (lbs.) | Wheel Base | Overall Length | Exterior Height w/ A/C & Satellite | Exterior Width | Interior Height | Fresh Water Capacity (gal.) <small>(Includes water heater)</small> | Grey Waste Water Capacity (gal.) | Black Waste Water Capacity (gal.) |
|-------------|-------------------------|-------------|-------------|-------------------|------------------|-----------------|------------|----------------|------------------------------------|----------------|-----------------|---|----------------------------------|-----------------------------------|
| CORNERSTONE | 45A, 45B, 45J, 45K, 45W | 54,000 | 74,000 | 20,000 | 20,000 | 14,000 | 320" | 44' 11" | 12' 11" | 101" | 84" | 100 | 62 | 41 |

| | Floorplan | GVWR (lbs.) | GCWR (lbs.) | Front GAWR (lbs.) | Rear GAWR (lbs.) | Tag GAWR (lbs.) | Wheel Base | Overall Length | Exterior Height w/ A/C & Satellite | Exterior Width | Interior Height | Fresh Water Capacity (gal.) <small>(Includes water heater)</small> | Grey Waste Water Capacity (gal.) | Black Waste Water Capacity (gal.) |
|--------|-----------------|-------------|-------------|-------------------|------------------|-----------------|------------|----------------|------------------------------------|----------------|-----------------|---|----------------------------------|-----------------------------------|
| ANTHEM | 42DEQ, 42RBQ | 49,000 | 64,000 | 17,000 | 20,000 | 12,000 | 296" | 43' 1" | 12' 9" | 101" | 84" | 100 | 62 | 41 |
| | 44A, 44B, 44DLQ | 49,000 | 64,000 | 17,000 | 20,000 | 12,000 | 320" | 44' 11" | 12' 9" | 101" | 84" | 100 | 62 | 41 |

| | Floorplan | GVWR (lbs.) | GCWR (lbs.) | Front GAWR (lbs.) | Rear GAWR (lbs.) | Tag GAWR (lbs.) | Wheel Base | Overall Length | Exterior Height w/ A/C & Satellite | Exterior Width | Interior Height | Fresh Water Capacity (gal.) <small>(Includes water heater)</small> | Grey Waste Water Capacity (gal.) | Black Waste Water Capacity (gal.) |
|--------|---------------|-------------|-------------|-------------------|------------------|-----------------|------------|----------------|------------------------------------|----------------|-----------------|---|----------------------------------|-----------------------------------|
| ASPIRE | 38M, 40P | 41,000 | 56,000 | 17,000 | 24,000 | N/A | 261" | 40' 6" | 12' 9" | 101" | 84" | 100 | 62 | 41 |
| | 42DEQ, 42RBQ | 49,000 | 64,000 | 17,000 | 20,000 | 12,000 | 296" | 43' 2" | 12' 9" | 101" | 84" | 100 | 62 | 41 |
| | 44B, 44R, 44U | 49,000 | 64,000 | 17,000 | 20,000 | 12,000 | 320" | 44' 11" | 12' 9" | 101" | 84" | 100 | 62 | 41 |

| | Floorplan | GVWR (lbs.) | GCWR (lbs.) | Front GAWR (lbs.) | Rear GAWR (lbs.) | Tag GAWR (lbs.) | Wheel Base | Overall Length | Exterior Height w/ A/C & Satellite | Exterior Width | Interior Height | Fresh Water Capacity (gal.) <small>(Includes water heater)</small> | Grey Waste Water Capacity (gal.) | Black Waste Water Capacity (gal.) |
|----------|-----------|-------------|-------------|-------------------|------------------|-----------------|------------|----------------|------------------------------------|----------------|-----------------|---|----------------------------------|-----------------------------------|
| INSIGNIA | 44B, 44W | 47,660 | 62,660 | 15,660 | 20,000 | 12,000 | 320" | 44' 11" | 12' 9" | 101" | 84" | 100 | 62 | 41 |

ENTEGRACOACH.COM

ENTEGRACOACH, INC., P.O. BOX 460, MIDDLEBURY, IN 46540

WWW.ENTEGRACOACH.COM

See dealer for further information and pricing. All information in this brochure is the latest available at the time of publication. Entegra Coach reserves the right to make changes and to discontinue models without notice or obligation. Photos in this brochure may show optional equipment and props for photography purpose only. Video screens and monitors are simulated. RVs built for sale in Canada may differ to conform to Canadian Codes. ©2016 Entegra Coach, Inc. 30K Printed in U.S.A. 07/16.

Gross Vehicle Weight Rating (GVWR): The maximum permissible weight of the motorcoach, including the Unloaded Vehicle Weight (UVW) plus passengers, personal items, all cargo, fluids, options and dealer-installed accessories. The GVWR is equal to or greater than the sum of the UVW and the Cargo Carrying Capacity. Gross Axle Weight Rating (GAWR): The maximum allowable weight each axle assembly is designed to carry, as measured at the tires, therefore including the weight of the axle assembly itself. Gross Combined Weight Rating (GCWR): The maximum allowable combined weight of the motorcoach used as a tow vehicle and the attached towed vehicle.

