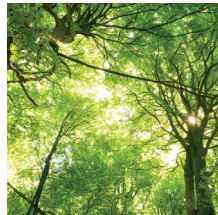
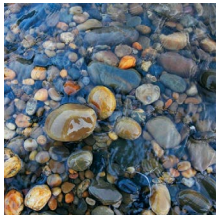




Spree®



Luxury Lightweight Travel Trailers





Spree is a thoroughly original high-end travel trailer. True luxury in every sense of the word. Boasting deep sliderooms, huge sliding windows for excellent cross ventilation and views, and generous LED lighting throughout. This S322RL is shown with optional freestanding dinette.

S322RL
seal
décor



Spree offers a thoughtfully-engineered barrel ceiling for increased headroom and water runoff. Depending on floorplan, Spree living spaces may include recliners, sofas and/or chairs or even theater seating!



Kitchens include designer high-definition seamless countertops with under-mount sink and drop-in cooktop with glass cover, and our 22-inch oven, microwave with turntable and an 8 cubic foot double-door refrigerator are all offered in stainless steel.



This large entertainment center includes stereo w/DVD/Bluetooth and NFC wireless connectivity.



Baths include a foot-flush toilet, skylight and power vent.



Relax on our 60" x 80" pillowtop mattress queen bed (some models offer a king bed). The bed features a plywood base with gas struts and an under bed storage system.



Some floorplans, like this S322RL, offer a spacious wardrobe slide.



Island models offer extra storage, and all floorplans include stainless steel sinks and pull-down residential-style faucets. Large overhead cabinets and additional storage areas.

S333RIK
seal
décor



The S333RIK comes with an 80-inch sofa and theater seating, and is shown with an optional free-standing table and chairs. Kitchen islands increase storage and counter space.



Interiors include a blue LED light strip located above the main living room slideout.



Sprees offer generous storage opportunities throughout, and the S333RIK is no exception.



Storage abounds in Spree bedrooms, and includes our unique bed storage system.



Bath areas boast excellent lighting, storage and counter space.

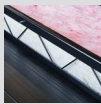


Spree TOP 5 Features and Benefits



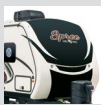
6-Sided Aluminum Frame

Aluminum framing doesn't rot or rust, & is lighter than wood or steel.



Heated & Enclosed Underbelly

Not just enclosed, but HEATED underbelly. Keeps holding tanks from freezing. Keeps road grime off holding tanks, wires & plumbing. Adds aerodynamics.



Painted Fiberglass Aerodynamic Front Cap

Sleek high-end feature offers good looks.



5/8" Tongue & Groove Plywood Floor

Simply put, plywood outperforms OSB in flooring. OSB is not as rigid as plywood, takes longer to dry out, suffers swollen edges/ridges/"ghost lines" under the linoleum, and degrades faster over time when exposed to continuous water.



2-Year Warranty

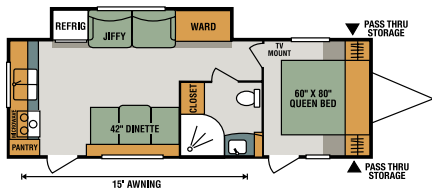
Backed by K-Z's continuous 40+ year operation. Industry standard is 1-year.



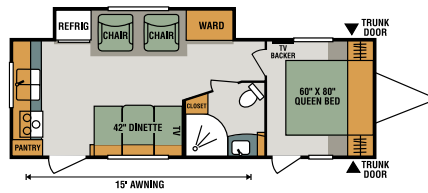
Ground Control TT®

is the first ever automatic leveling system designed for travel trailers, and its one-touch system levels and stabilizes your travel trailer quickly and accurately in a matter of minutes! The all-new stabilizer jacks form a rigid triangle; the strongest shape in nature.

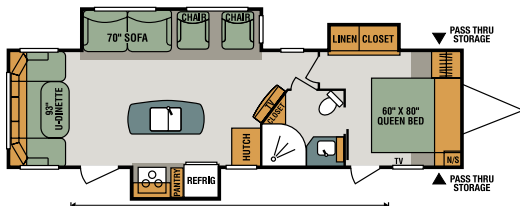




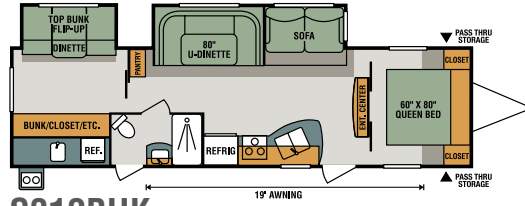
S261RK



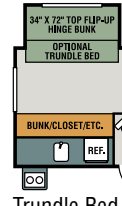
S261RKC



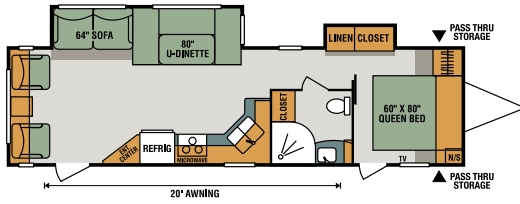
S303RL



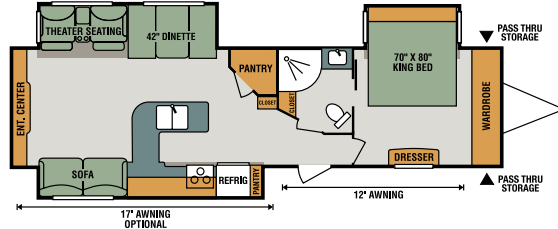
S312BHK



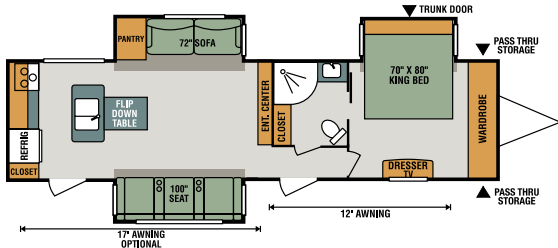
Trundle Bed Option



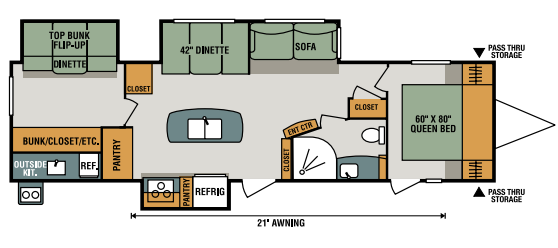
S322RL



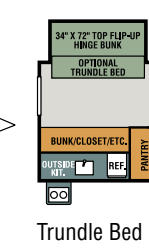
S323RE



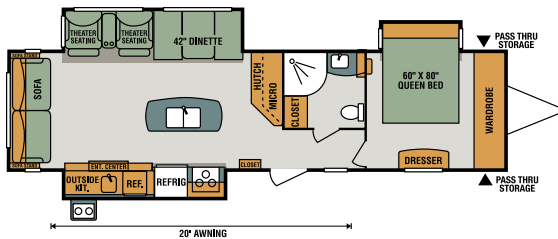
S323RK



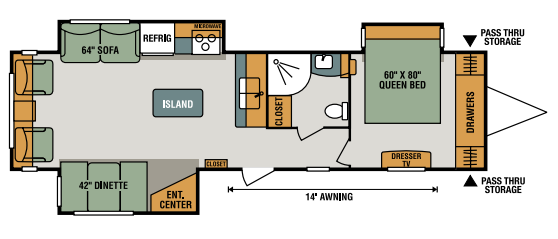
S333BHK



Trundle Bed Option



S333RIK **NEW**



S333RLI

All these great Spree floorplans to choose from....!

Travel Trailers	S261RK	S261RKC	S303RL	S312BHK	S322RL	S323RE	S323RK	S333BHK	S333RIK	S333RLI
UVW (Unloaded Vehicle Weight)*	5,590	5,710	7,790	7,150	6,970	8,410	8,420	8,130	8,160	7,770
Dry Hitch Weight*	600	550	1,170	720	970	1,020	1,070	860	740	900
Dry Axle Weight*	4,990	5,160	6,620	6,430	6,000	7,390	7,350	7,270	7,420	6,870
NCC (Net Carrying Capacity)	1,210	1,090	1,010	1,150	1,330	1,090	1,080	1,370	1,340	1,530
GVWR	6,800	6,800	8,800	8,300	8,300	9,500	9,500	9,500	9,500	9,500
Interior Height	82"	82"	82"	82"	82"	82"	82"	82"	82"	82"
Exterior Height w/ A/C	11' 1"	11' 1"	11' 2"	11' 2"	11' 2"	11' 6"	11' 6"	11' 6"	11' 6"	11' 3"
Exterior Width	96"	96"	96"	96"	96"	96"	96"	96"	96"	96"
Exterior Length	28' 9"	28' 9"	34' 6"	35' 6"	35' 1"	35' 11"	37' 4"	36' 6"	36' 2"	36' 5"
Refrigerator (cu. feet)	8	8	8	8	8	8	8	8	8	8
Water Heater Cap. (gal. G/E w/DSI)	6	6	6	6	6	6	6	6	6	6
Fresh Water Cap. (gal.)	40	40	40	40	40	40	40	40	40	40
Waste Water Cap. (gal.)	32	32	32	32	32	32	32	32	32	32
Gray Water Cap. (gal.)	60	60	32	32	32	32	64	56	32	32
LP Gas Cap. (lbs.)	60	60	60	60	60	60	60	60	60	60
Furnace BTUs (1,000s)	20	20	30	30	30	30	30	30	30	30
Tire Size	15"	15"	15"	15"	15"	15"	15"	15"	15"	15"
Awning	15'	15'	21'	19'	20'	12' w/17' opt.	12' w/17' opt.	21'	20'	14'

*This weight reflects the rolling average unit weight for each model. Your trailer weight will vary according to optional equipment.



Boulder



Seal



Stone

Standards

- 3/8" Fully Walk-On Roof Decking
- 1-Piece Seamless Roof w/SuperFlex® Roofing Material
- Awning w/Drip Rail & Spouts
- Ivory Color-Infused Gelcoat F/G Sidewalls
- Tinted Windows
- 5/8" Tongue & Groove Plywood Floor
- 30" Radius Entry Door
- Triple Step
- Slam Latch Baggage Doors
- Self-Adjusting Brakes
- 15" Tires
- Rear Bumper W/Sewer Hose Storage
- LED Exterior Lighting
- 30 AMP Service
- 30# LP Bottles & Cover w/Flip-Up Access Lid
- 13,500 BTU A/C
- Black Tank Flush
- Exterior Shower
- Digital TV Antenna w/Booster
- Cable Hookup
- Satellite Prep
- Monitor Panel
- Barrel Ceiling
- Stainless Steel Oven
- Stainless Steel Microwave w/Turntable
- LP/Electric Double-Door Stainless Steel Refrigerator
- Drawers under Refrigerator & Oven (where applicable)
- Large Overhead Cabinets
- Solid Wood-Framed Mortise & Tenon Glazed Cabinet Doors
- Roller Ball Bearing Drawer Guides
- Free-Standing Residential Convertible Sofa (where applicable)
- Kitchen Skylight
- LED Interior Lighting
- Nightshades
- Bath Skylight
- Power Bath Vent
- Decorative Bedspread w/Body Pillow
- Designer Headboard

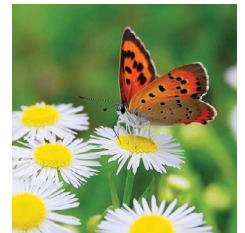
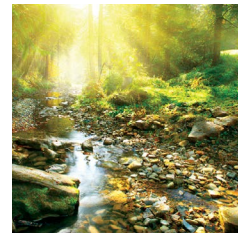
K-Z Advantage Package (mandatory option)

- Ground Control 3.0® TT Auto-Leveling System
- 6-Sided Aluminum Structure
- Painted Front Cap
- Power Awning w/LED Light Strip
- Frameless Windows
- Climate Package (insulated, heated & enclosed underbelly)
- 5/8" Tongue & Groove Plywood Floor
- Friction Hinge 30" Entry Door w/Larger Window & Shade
- Large Folding Grab Handle
- Alumitread® Entry Steps
- Amber Step Light
- Key-Alike® Program for Baggage & Entry Doors
- Power Front Jack w/LED Light
- Equa-Flex® Suspension
- Aluminum Rims
- Nitrogen-Filled Tires
- Spare Tire
- Exterior Speakers
- Solar Prep
- Backup Camera Prep
- Flip-Down 71" Storage Rack
- (2) 30# LP Bottles
- 6 GAL LP/Electric DSI Water Heater
- Battery Disconnect
- ToyLok®
- Drop-In Cooktop w/Glass Cover
- 22" Oven
- 8 CU FT Refrigerator w/Stainless Steel Appliances
- Seamless Countertops w/Under-Mount Kitchen Sink & Sink Covers
- Residential Style Faucet
- Dinette Doors w/36" Pullout Storage Bins
- Push-Back Recliners (living room models)
- Storage Sofa w/Middle Console
- Blue LED Light Strip above Main Living Room Slide
- (2) LED Motion Sensor Lights

- Multi-Media Stereo w/DVD, Bluetooth & NFC Wireless Connectivity
- 12V USB Ports in Bunk Area
- 12V Dual USB Port
- (2) 6.5" Interior Speakers
- Foot-Flush Porcelain Toilet
- 60" x 80" Queen Pillowtop Mattress (select models king)
- Bed Storage System
- Plywood Bed Base w/Gas Struts
- Kitchen Skylight

Options

- Radiant Technology Package (foil in floor, roof, front & rear)
- 2nd Awning (S323RE, S323RK)
- Roof Ladder
- Bumper-Mount Grill
- Wireless Backup Camera System
- 15,000 BTU A/C (IPO 13,500 BTU A/C)
- 50 AMP Service & Wire for 2nd A/C
- 2nd 13,500 BTU A/C
- Free-Standing Table & (4) Chairs (IPO dinette)
- Tri-Fold Hide-a-Bed (IPO storage sofa) (N/A S261RK, S261RKC)
- Theater Seating (mandatory – S323RE, S333RIK)
- Trundle Bed (IPO bunk slide dinette – S312BHK, S333BHK)
- Fireplace
- 48" LED TV (S323RK, S323RE)
- 39" LED TV (S261RK, S261RKC, S312BHK, S333RLI, S333RIK)
- 32" LED TV (S303RL, S322RL, S333BHK)
- Bedroom LED TV w/Inside/Outside TV Bracket
- MaxxAir® Vent Fan (bathroom only)



985 N 900 W • Shipshewana, IN 46565
E-mail kz@kz-rv.com • www.kz-rv.com

Dealer:

Due to continual research and advances, manufacturer reserves the right to change specifications, design, price and equipment without notice, and assumes no responsibility for any error in this literature. Some items shown are not included as standard or optional equipment. ©2016KZ | 11/17/16 | 50M