

 Keystone RV
Company

Springdale

by Keystone 

TRAVEL TRAILERS & FIFTH WHEELS

EASTERN
EDITION



**A BETTER WAY
TO CAMP**

DSI 
Annual RVDA DEALER
SATISFACTION INDEX

**Keystone RV
Company**

When Cole Davis founded Keystone RV in 1996 his vision was clear: Build a quality RV loaded with features priced thousands less than other RVs on the market. To accomplish his goal, Cole would recruit and build a strong team, focus on keeping overhead low, and empower the people closest to the customer to make decisions. Within a few short months after opening the doors, Keystone produced its very first camper. Delivering big on quality, features and value, the public fell in love and a star was born.

As customers appetite skyrocketed, new Keystone models were added to satisfy growing customer demand. Along with this tremendous growth came the need for expanded production. To meet this need, more manufacturing plants were built and staffed. By the beginning of 2000, Keystone was leading the industry in fifth wheel and trailer sales. Today, Keystone RV Company has grown to encompass over 1 million square feet of manufacturing space with facilities in Goshen, Indiana and Pendleton, Oregon. While Keystone is no longer the small "start up" we once were, our mission has remained true to Cole's vision—"Do the job right and make sure we deliver a quality product every time."

Our Story



An original Keystone RV brand 18 years and running strong... **SPRINGDALE** is a benchmark of success in the RV industry as well as a legacy for our company Keystone RV. Having made countless camping adventures even better... The **SPRINGDALE** brand of travel trailers has exceeded expectations and helped create memories for our customers that will last for many years to come.

At Keystone RV, we pride ourselves on unmatched quality control procedures and maintain customer service that is second to none. With our 18 year proven track record... **SPRINGDALE** travel trailers are constructed with our customers in mind. This quality craftsmanship and attention to detail ensures our customers a peace of mind that they will continue to get the most out of their camping season.

With **SPRINGDALE**, we understand that our customer's hard earned money should go just as far as their adventures can take them. That is why we believe in the importance of delivering the best floor plans, best features, best look and best quality... period. Once on the road to adventure, our customers will see how camping in their **SPRINGDALE** travel trailer "is just plain better"! Unmatched in its design, **SPRINGDALE** offers numerous features you can't find on any of our competitors, as well as more standard options and amenities than any travel trailer in its class. From our interior vaulted ceiling, 14' Super Slide Room to the "Do More" dinette table, we have remained focused on providing great value and convenient features that will always make camping in your **SPRINGDALE** travel trailer... A Better Way To Camp!

Springdale

by Keystone 

THE COMPLETE CHOICE

SUMMERLAND MINI SINGLE AXLE

- Full Size Compact Travel Trailer
- Complete Floorplan Choices
- Light Weight with Elbow Room
- Amazing Interior Height in its Class



SUMMERLAND

- Wide Variety of Floorplans
- Everything You Need To Go Camping
- For the First Time Buyer to the Experienced Camper
- Featuring Summerland Series Package



SPRINGDALE

- Complete Collection of Couples Coaches & Family Bunk Models
- Full Featured Travel Trailer With A Look & Options Not Found On Our Competition
- Everything From Single Slide 25' to 38' Double Slides



SPRINGDALE FIFTH WHEELS

- The Full Featured Entry Level 5th
- Great Bunkhouse & Couples Units
- Full Color Aluminum Frame Laminated Fiberglass Sidewalls



ADVENTURE PACKAGE



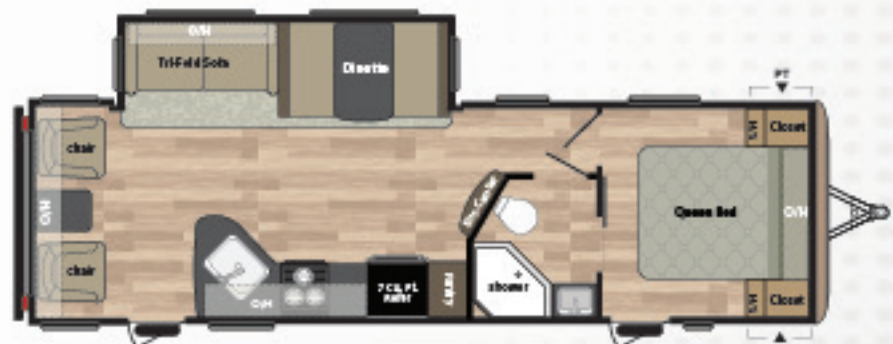
235RB WEIGHT: 6069 LENGTH: 27' 5"



240BH WEIGHT: 6407 LENGTH: 28' 11"



262RK WEIGHT: 6377 LENGTH: 30' 2"



271RL WEIGHT: 6961 LENGTH: 32' 11"



287RB WEIGHT: 7781 LENGTH: 32' 10"



293RK WEIGHT: 7059 LENGTH: 33' 4"

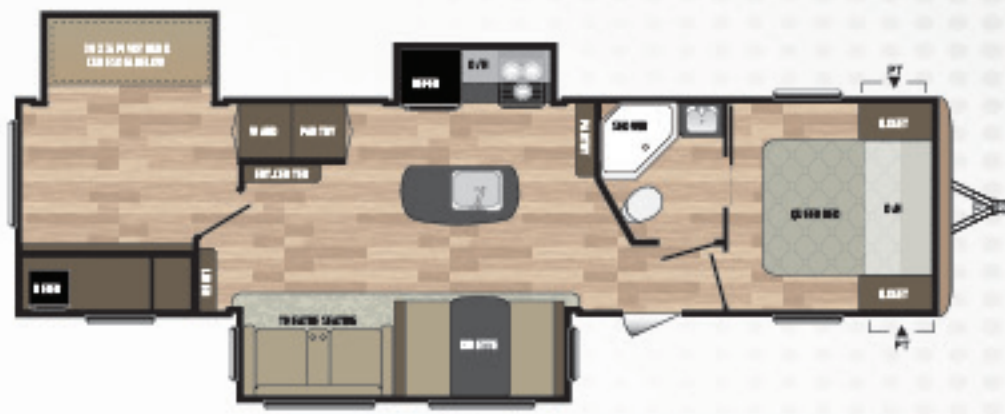
TRAVEL TRAILER FLOORPLANS



303BH WEIGHT: 8086 LENGTH: 35' 0"



311RE WEIGHT: 8343 LENGTH: 35' 7"



332RB WEIGHT: 9263 LENGTH: 37' 7"



// 332RB SHOWN IN ESPRESSO DECOR



// 293RK SHOWN IN ESPRESSO DECOR

MODEL	SHIPPING WEIGHT	CARRYING CAPACITY	HITCH WEIGHT	EXT LENGTH*	EXT HEIGHT	FRESH WATER	WASTE WATER	GREY WATER	LP6
235RB	6069	1726	795	27' 5"	11' 3"	52	39	78	60
240BH	6407	1593	735	28' 11"	11' 3"	52	39	69	60
262RK	6377	1373	750	30' 2"	11' 3"	52	30	78	60
271RL	6961	2574	735	31' 10"	11' 3"	52	39	30	60
287RB	7781	1954	935	32' 10"	11' 3"	52	39	69	60
293RK	7059	2686	925	33' 4"	11' 3"	52	30	69	60
303BH	8086	1684	970	35' 0"	11' 4"	52	39	39	60
311RE	8343	1417	960	35' 7"	10' 11"	52	39	78	60
332RB	9263	2112	1215	37' 7"	10' 11"	52	30	78	60

DISCLAIMER: Product information is as accurate as possible as of the date of publication of this brochure. All features, floor plans, and specifications in this brochure are subject to change without notice. Please also consult Keystone's web site at www.keystonev.com for more current product information and specifications. Tow Vehicle Disclaimer. CAUTION: Owners of Keystone recreational vehicles are solely responsible for the selection and proper use of tow vehicles. All customers should consult with a motor vehicle manufacturer or their dealer concerning the purchase and use of suitable tow vehicles for Keystone products. Keystone disclaims any liability or damages suffered as a result of the selection, operation, use or misuse of a tow vehicle. KEYSTONE'S LIMITED WARRANTY DOES NOT COVER DAMAGE TO THE RECREATIONAL VEHICLE OR THE TOW VEHICLE AS A RESULT OF THE SELECTION, OPERATION, USE OR MISUSE OF THE TOW VEHICLE. *Length is defined as the distance from the centerline of hitch pin/coupler to rear bumper of trailer. 01.17

Springdale *Limited Edition*

by Keystone



260LE WEIGHT: 5210 LENGTH: 28' 10"



270LE WEIGHT: 7050 LENGTH: 32' 11"

MODEL	SHIPPING WEIGHT	CARRYING CAPACITY	HITCH WEIGHT	EXTERIOR LENGTH*	EXTERIOR HEIGHT	FRESH WATER	WASTE WATER	GREY WATER	LPG
260LE	5131	2509	640	28' 10"	10' 6"	52	39	30	60
270LE	6920	2665	785	32' 11"	11' 3"	52	39	60	60

// 270LE SHOWN IN KONA DECOR



Springdale

by Keystone

TRAVEL IN COMFORT, ENJOY THE TRIP, IT'S A WAY OF LIFE...

38's



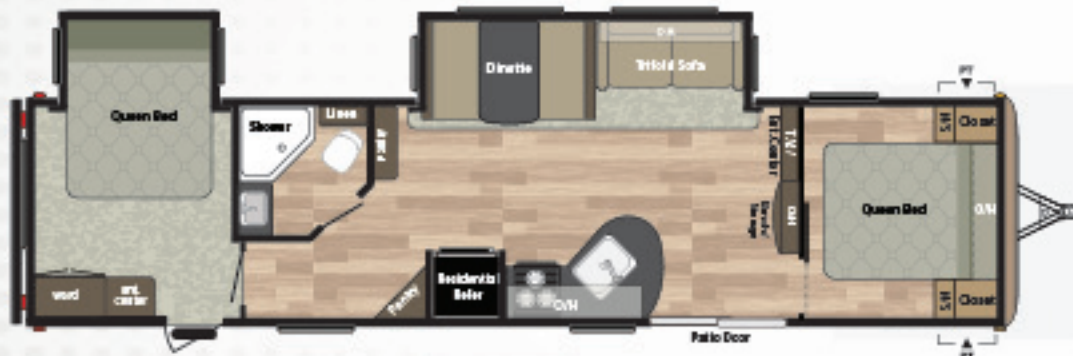
38FL WEIGHT: 8660 LENGTH: 38' 11"

- SECTIONAL SOFA W/ FIREPLACE
- 18 CU. FT. RESIDENTIAL REFRIGERATOR
- 10 GALLON GAS/ELECTRIC DSI WATER HEATER
- BEDROOM SLIDE



38BH WEIGHT: 8729 LENGTH: 38' 11"

- BUNKHOUSE W/ KIDS DINETTE
- 18 CU. FT. RESIDENTIAL REFRIGERATOR
- 10 GALLON GAS/ELECTRIC DSI WATER HEATER
- BEDROOM SLIDE



38FQ WEIGHT: 8625 LENGTH: 38' 11"

- TWO BEDROOMS
- 18 CU. FT. RESIDENTIAL REFRIGERATOR
- 10 GALLON GAS/ELECTRIC DSI WATER HEATER
- BEDROOM SLIDE

MODEL	SHIPPING WEIGHT	CARRYING CAPACITY	HITCH WEIGHT	EXT LENGTH*	EXT HEIGHT	FRESH WATER	WASTE WATER	GREY WATER	LPG
38BH	8729	2426	995	38' 11"	11' 4"	56	39	69	60
38FL	8660	2445	845	38' 11"	11' 4"	56	39	69	60
38FQ	8625	2510	975	38' 11"	11' 4"	56	39	69	60

TOP 6 FEATURES

- 18 CU. FT. RESIDENTIAL REFRIGERATOR
- 10 GALLON GAS/ELECTRIC DSI WATER HEATER
- BEDROOM SLIDE
- 50 AMP SERVICE WIRED & BRACED FOR 2ND AC
- HEATED & ENCLOSED UNDERBELLY
- 60" PATIO DOOR



Springdale
VAULTED CEILING
— RAISING THE BAR ON INNOVATION —
6'10"

// 311RE SHOWN IN KONA DECOR



8 // 311RE SHOWN IN KONA DECOR

SPRINGDALE INTERIORS



// 240BH BEDROOM



// 235RB SHOWN IN ALMOND DECOR



// 293RK KITCHEN



// 235RB BATHROOM



// 332RB BUNKROOM

FEATURES



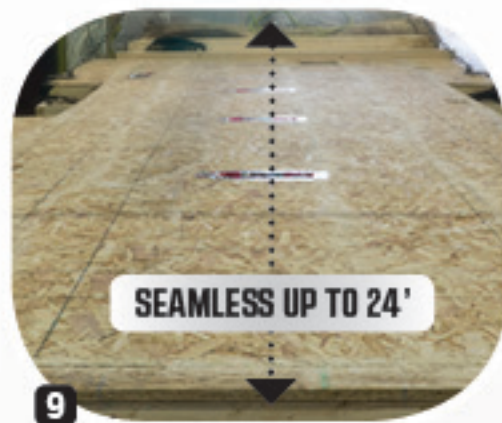
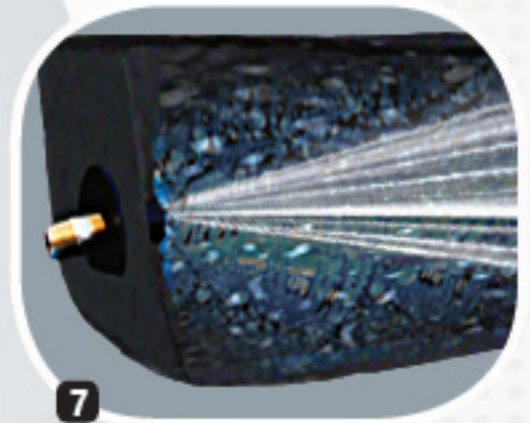
EXCLUDES: 260LE, SM2020, SM2600



TOP SELLING FEATURES

1. VAULTED CEILING
2. LED TV W/ BLUETOOTH & DVD SYSTEM
3. DIGITAL CHARGING STATION
4. HEATED/ENCLOSED UNDERBELLY
5. FRICTION HINGE DOOR
6. TRI-FOLD SLEEPER SOFA
7. BLACK TANK FLUSH
8. MAPLE CABINET DOORS
25 YR. WARRANTY

9. DYNASPAN FLOORING
W/ 25 YR. WARRANTY
10. ALUMINUM WHEELS
11. DO-MORE DINETTE TABLE
12. FULL BODY GRAPHICS
13. 7 CU. FT. STAINLESS STEEL
REFRIGERATOR



- 1 Continuous Steel I-Beam Powder Coated Frame
- 2 Walkable Crowned Roof
- 3 Hurricane Strap Reinforced Structure
- 4 Oversized Pass Through Storage
- 5 Diamond Plate Front Protector
- 6 One Piece Alpha-Ply Roof
- 7 3/8" Walkable Roof Decking
- 8 Dual 30 Lb. LP Bottles
- 9 Crowned Slide Box
- 10 Electric Awning
- 11 Residential Batten Insulation Throughout
- 12 Dual Battery Storage Tray
- 13 XL Entry Assist Handle
- 14 5/8" Dynaspan Floor Decking
- 15 Aluminum Wheels (Opt.)
- 16 Triple Stage Slide Room Seals
- 17 Aluminum Triple Entry Steps (Select Models)
- 18 2x3 Floor Joists 12" on Center
- 19 Wide Stance Axles (Select Models)
- 20 Radius Skirting
- 21 E-Z Lube Axles
- 22 0.30 Aluminum Baked Enamel Siding
- 23 Black Framed, Tinted Safety Glass Windows
- 24 Rain Gutter with Extended Down Spouts
- 25 Fender Skirts
- 26 13,500 BTU Ducted Air Conditioner (Opt. 15K)
- 27 Bumper Sewer Hose Storage
- 28 Exterior TV Mount
- 29 (4) Stabilizer Jacks
- 30 Electric Tongue Jack (Opt.)



- 30K BTU FURNACE
 - ENCLOSED UNDERBELLY
 - DEDICATED AIR DUCT FORCING HEAT DIRECTLY FROM FURNACE INTO THE UNDERBELLY
- (EXCLUDES: 260LE, SM2020, SM2600)



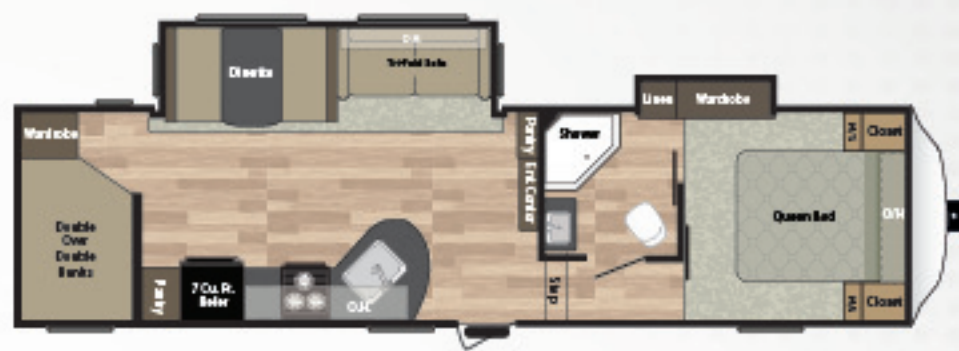
FIFTH WHEEL FLOORPLANS



253FWRE WEIGHT: 8493 LENGTH: 32' 10"



262FWRK WEIGHT: 7290 LENGTH: 28' 8"



286FWBH WEIGHT: 8296 LENGTH: 33' 6"



278FWRL WEIGHT: 8157 LENGTH: 31' 0"



302FWRK WEIGHT: 8880 LENGTH: 33' 9"



TOP SELLING FEATURES

- 50 AMP SERVICE WIRED & BRACED FOR 2ND A/C
- HEATED & ENCLOSED UNDERBELLY
- LAMINATED SIDEWALLS
- ALL FLOORPLANS UNDER 9,000 LBS.

MODEL	SHIPPING WEIGHT	CARRYING CAPACITY	HITCH WEIGHT	EXT LENGTH*	EXT HEIGHT	FRESH WATER	WASTE WATER	GREY WATER	LPG
253FWRE	8493	1807	1500	32' 10"	11' 10"	52	39	39	60
262FWRK	7290	2770	1260	28' 8"	11' 10"	52	39	78	60
278FWRL	8157	2038	1395	31' 0"	11' 10"	52	39	39	60
286FWBH	8296	2244	1740	33' 6"	11' 4"	52	39	78	60
302FWRK	8880	1440	1520	33' 9"	11' 4"	52	39	78	60

FIFTH WHEEL INTERIORS

// 302FWRK SHOWN IN KONA DECOR



// 253FWRE SHOWN IN ESPRESSO DECOR

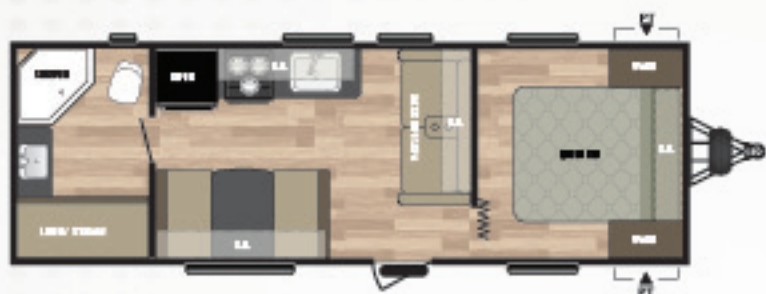
SUMMERLAND SERIES



2020QB WEIGHT: 4279 LENGTH: 24' 10"



2200MB WEIGHT: 5437 LENGTH: 26' 2"



2450RB WEIGHT: 5033 LENGTH: 26' 2"



2570RL WEIGHT: 6005 LENGTH: 29' 8"



2600TB WEIGHT: 4861 LENGTH: 28' 10"



2660RL WEIGHT: 6051 LENGTH: 28' 11"

SUMMERLAND SERIES PACKAGE

BUMPER GRILL MOUNT



AWNINGS W/LED LIGHTS



***ELECTRIC STABILIZER JACKS**



BACKUP CAMERA PREP



LED LIGHT IN PASS-THRU STORAGE



***HEATED & ENCLOSED UNDER BELLY
EXCLUDES 2020, 2600**



LED INTERIOR LIGHTS



DIA AND NO PLATE



UPGRADED FAUCET



***SELECT MODELS**

SUMMERLAND SERIES FLOORPLANS



2720BH WEIGHT: 6105 LENGTH: 30' 0"



2820BH WEIGHT: 6597 LENGTH: 32' 1"



2960BH WEIGHT: 6701 LENGTH: 32' 2"



2980BH WEIGHT: 6528 LENGTH: 32' 7"



3030BH WEIGHT: 7641 LENGTH: 34' 11"

STAY IN TOUCH

Springdale & Springdale Summerland Series are always just a touch away. You'll find 360 virtual tours, location of your nearest dealer, photos, videos and all of the latest information about Springdale & Springdale Summerland Series. Everything you need can be accessed anytime, day or night, from home or on the road. You can also find us on the Keystone RV Facebook.

KEYSTONERV.COM/SPRINGDALE



MODEL	SHIPPING WEIGHT	CARRYING CAPACITY	HITCH WEIGHT	EXT LENGTH*	EXT HEIGHT	FRESH WATER	WASTE WATER	GREY WATER	LPG
2020QB	4279	2221	515	24' 10"	10' 6"	52	30	30	40
2200MB	5437	2233	670	26' 2"	11' 1"	52	30	78	40
2450RB	5033	2567	600	27' 11"	10' 6"	52	39	69	40
2570RL	6005	1610	615	29' 8"	10' 6"	52	39	69	40
2600TB	4861	2649	510	28' 10"	10' 6"	52	39	30	40
2660RL	6051	1594	645	28' 11"	10' 11"	52	39	39	40
2720BH	6105	1895	1075	31' 4"	10' 6"	52	39	39	40
2820BH	6597	2003	690	32' 1"	11' 3"	52	39	69	40
2960BH	6701	3019	920	33' 2"	10' 11"	52	30	39	40
2980BH	6528	2987	715	32' 7"	10' 11"	52	30	39	40
3030BH	7641	2089	930	34' 11"	10' 11"	52	39	39	40

DISCLAIMER: Product information is as accurate as possible as of the date of publication of this brochure. All features, floor plans, and specifications in this brochure are subject to change without notice. Please also consult Keystone's web site at www.keystonerv.com for more current product information and specifications. Tow Vehicle Disclaimer: CAUTION: Owners of Keystone recreational vehicles are solely responsible for the selection and proper use of tow vehicles. All customers should consult with a motor vehicle manufacturer or their dealer concerning the purchase and use of suitable tow vehicles for Keystone products. Keystone disclaims any liability or damages suffered as a result of the selection, operation, use or misuse of a tow vehicle. KEYSTONE'S LIMITED WARRANTY DOES NOT COVER DAMAGE TO THE RECREATIONAL VEHICLE OR THE TOW VEHICLE AS A RESULT OF THE SELECTION, OPERATION, USE OR MISUSE OF THE TOW VEHICLE. *Length is defined as the distance from the centerline of hitch pin/coupler to rear bumper of trailer. 01.17

SUMMERLAND SERIES INTERIORS



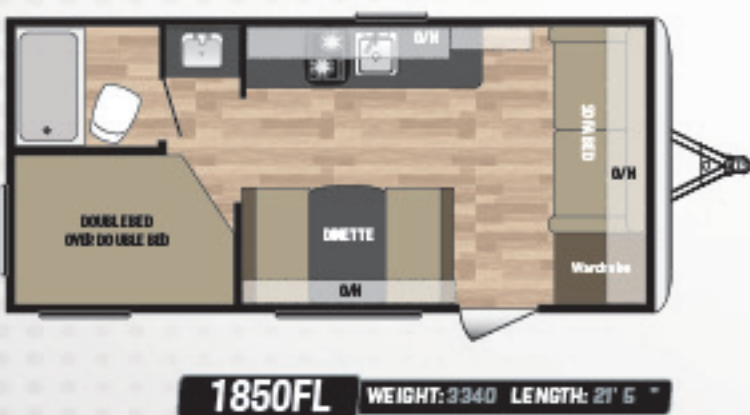
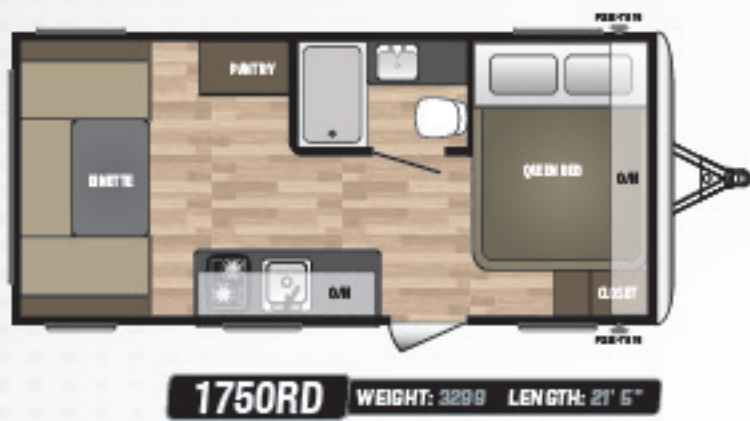
SUMMERLAND SERIES SINGLE AXLE FLOORPLANS

SUMMERLAND SERIES *Mini*



TOP 5 SELLING FEATURES

- 8' WIDE
- 78" INTERIOR HEIGHT
- GAS STRUTTED DOOR
- 3 CU. FT. GAS/ELECTRIC REFRIGERATOR
- SEAMLESS FLOORING



MODEL	SHIPPING WEIGHT	CARRYING CAPACITY	HITCH WEIGHT	EXTERIOR LENGTH*	EXTERIOR HEIGHT	FRESH WATER	WASTE WATER	GREY WATER	LPG
1700FQ	3288	1112	480	21' 5"	10' 6"	27	30	30	20
1750RD	3299	1101	465	21' 5"	10' 6"	27	30	30	20
1800BH	3234	1166	440	21' 5"	10' 6"	27	30	30	20
1850FL	3340	1060	545	21' 5"	10' 6"	27	30	30	20

DECOR OPTIONS / AWARDS



ONLY BRAND IN SEGMENT TO RECEIVE AWARD IN 2016!



SPRINGDALE HAS EARNED MULTIPLE RVDA DEALER SATISFACTION INDEX AWARD

STAY IN TOUCH



Springdale & Summerland are always just a touch away. You'll find 360 virtual tours, location of your nearest dealer, photos, videos and all of the latest information about Springdale & Summerland. Everything you need can be accessed anytime, day or night, from home or on the road. You can also find us on the Keystone RV Facebook.

EXTERIOR	SPRINGDALE TT	SPRINGDALE FW	SUMMERLAND TT	MINI
Laminated Fiberglass Sidewalls	-	S	-	-
Electric Adjustable Front Landing Gear	-	S	-	-
Diamond Plate	S	-	S	S
Adjustable Power Awning	S	S	S	-
Manual Patio awning	-	-	-	S
Outside 110 receptacle	S	S	S	S
Aluminum Wheels	0	0	0	-
Power Tongue Jack	0	-	0	-
XL Entry Assist Handle	S	S	-	-
Arctic Package (Excludes: 260LE, 2600TB, 202008)	S	S	S	-
Powder Coated I-Beam Frame	S	S	S	-
Spread Axle (Models w/Slides)	S	S	-	-
Easy Ultra-lube Axles	S	S	S	S
Full Length Outriggers on Frame	S	S	S	S
Dual Battery Rack	S	S	S	-
Two 30 lb. LP Bottles	S	S	-	-
2 Exterior Speakers	S	S	S	S
TV Antenna with Booster	S	S	S	S
Oversized Pass Thru Storage	S	S	S	S
Hurricane Straps Reinforced Structure	S	S	S	S
Four heavy duty stabilizer jacks	0	-	0	0
Two Heavy Duty Stabilizer Jacks	-	S	-	S
Radial Tires	S	S	S	S
Cambered chassis	S	S	S	S
96" Exterior width	S	S	S	S
Exterior Shower	S	S	0	-
Spare Tire and Carrier	0	0	0	0
E-Z Open Entry Step	S	S	S	S
50 Amp Service w/Detachable Cord (Select Models)	S	S	-	-
Black Tank Flush (Excludes: 260LE, 270LE)	S	S	-	-
INTERIOR				
Mini Blinds	-	-	S	S
Tri-Fold Sleeper Sofa (Select Models)	0	0	-	-
Jackknife Sofa Bed	-	-	S	S
Large Medicine Cabinet	S	S	S	S
Pleated Night Shades in Living Area	S	S	-	-
Full Strutted Storage under Master Bed	S	S	-	-
Nightstand w/Drawer in Bedroom	S	S	-	-
32" TV (39" on some models)	0	0	0	-
2 Interior Speakers	S	S	S	S
AM/FM Bluetooth w/MP3 Stereo	-	-	S	-
AM/FM Bluetooth CD/DVD Ent. System	S	S	-	-
Residential Microwave	S	S	S	S
Monitor Panel	S	S	S	S
7 Cu. Ft. Refrigerator	S	S	-	-
6 Cu. Ft. Refrigerator	-	-	S	-
Residential Refrigerator (388H, 38FL, 38FQ only)	S	-	-	-

INTERIOR (CONT.)	SPRINGDALE TT	SPRINGDALE FW	SUMMERLAND TT	MINI
3.2 Cu. Ft. Gas/Electric Refer	-	-	-	S
Ball Bearing Drawer Guides	S	S	S	S
Reversible Dinette Cushions	S	S	S	S
High Rise Detachable Sprayer Faucet	S	S	S	S
High Impact Acrylic Sink	S	S	S	S
18" Oven w/3 Burner Cooktop	S	S	S	-
2 Burner Cooktop	-	-	-	S
Freestanding Table & Chairs (Select Models)	0	0	-	-
"Do More Dinette" Table (Select Models)	S	S	-	-
12 Volt 55 Amp Converter	S	S	S	-
15,000 BTU Air Conditioner	0	0	0	-
13,500 BTU Air Conditioner	S	S	S	0
8K BTU Air Conditioner	-	-	-	S
Forced Air DSI 30K BTU Furnace w/Thermostat (Ducted most models) (Excluding 2020, 2600)	S	S	S	-
20K BTU Furnace	-	-	-	S
6 Gal. Gas/Electric DSI Water Heater	S	S	S	-
Skylight Over Tub/Shower	S	S	-	-
Flex Pex Tubing with 10 Year Warranty	S	S	S	S
82" Vaulted Ceiling	S	-	-	-
Tub Surround	S	S	S	-
Foot Flush Toilet	S	S	S	S
RG6 Cable and Satellite Wiring	S	S	S	S
2x3 Floor Construction 12" OC w/S/8th Decking	S	S	S	S
16" on Center Raised Roof Truss System	S	S	S	S
4 1/2" Crowned Roof	S	S	S	S
16" on Center Side Walls	S	S	S	S
R-7 Insulation-Floor, Roof, Walls	S	S	S	S
SUMMER PACKAGE *	-	-	S	-
SAFETY				
Fire Extinguisher	S	S	S	S
Smoke Detector	S	S	S	S
LP Detector	S	S	S	S
CO Detector	S	S	S	S
Safety Chains	S	S	S	S
Emergency Brake-a-way switch	S	S	S	S

» **SUMMERLAND SUMMER PACKAGE ***

- Outdoor Shower
- 6 Gal. Gas/Electric DSI Water Heater
- RG6 Cable and Satellite Wiring
- 2 - 20# LP Tanks w/Cover
- Tub Surround

SPRINGDALE TT = SPRINGDALE TRAVEL TRAILERS
 SPRINGDALE FW = SPRINGDALE FIFTH WHEELS
 SUMMERLAND TT = SUMMERLAND SERIES TRAVEL TRAILERS
 MINI = SUMMERLAND SINGLE AXLE TRAVEL TRAILERS

S STANDARD | 0 OPTIONAL | - NOT AVAILABLE

Springdale

by Keystone 



TRAVEL TRAILERS • FIFTH WHEELS • SINGLE AXLE TRAVEL TRAILERS



PURCHASING YOUR RV LOCALLY

It's up to you where you purchase your new Springdale, but may we suggest your local dealer? Not only does it help your local economy and provide jobs, but it will also give you an opportunity to develop a service relationship with someone that will come to know you and your coach. Congratulations on finding the best built, best equipped and best value in the industry. Happy travels!

YOUR LOCAL DEALER IS:



JANUARY 2017



**Keystone RV
Company**

WWW.KEYSTONERV.COM
574.535.2100 • 2642 HACKBERRY DRIVE
P.O. BOX 2000 • GOSHEN, IN 46527



Go RVing

DISCLAIMER: Product information is as accurate as possible as of the date of publication of this brochure. All features, floor plans, and specifications in this brochure are subject to change without notice. Please also consult Keystone's web site at www.keystonerv.com for more current product information and specifications. Tow Vehicle Disclaimer. CAUTION: Owners of Keystone recreational vehicles are solely responsible for the selection and proper use of tow vehicles. All customers should consult with a motor vehicle manufacturer or their dealer concerning the purchase and use of suitable tow vehicles for Keystone products. Keystone disclaims any liability or damages suffered as a result of the selection, operation, use or misuse of a tow vehicle. KEYSTONE'S LIMITED WARRANTY DOES NOT COVER DAMAGE TO THE RECREATIONAL VEHICLE OR THE TOW VEHICLE AS A RESULT OF THE SELECTION, OPERATION, USE OR MISUSE OF THE TOW VEHICLE. *Length is defined as the distance from the centerline of hitch pin/coupler to rear bumper of trailer.

A BETTER WAY TO CAMP | WWW.KEYSTONERV.COM/SPRINGDALE