

# LAREDO

by Keystone



*Travel Trailers*

*Super-Light Fifth Wheels*

*Mid-Profile Fifth Wheels*

The leader in  
**AFFORDABLE LUXURY**



# LAREDO

*by Keystone*

*Enjoy the Life Sized Camping Experience.*

The amenities in your home are life sized and they should be like that in your camper, too. Laredo doesn't settle for smaller RV sized features. Instead we make them "life sized" the way you are used to. Laredo enhances your camping experience by giving you the perfect combination of features, floor plans and value. Couple Laredo's "Life Sized" features with industry leading quality and customer service and sacrifice nothing in your home away from home.



## **TRAVEL TRAILERS**

The Leader in Affordable Luxury

**PAGES 4-7**



## ***SUPER LITE FIFTH WHEELS***

All the features of the full size fifth wheels but in a compact design

**PAGES 8-10**

## ***MID-PROFILE FIFTH WHEELS***

Luxury Features with Lite Weight Towability

**PAGES 11-13**

*The leader in*  
**AFFORDABLE  
LUXURY**



# 334RE TRAVEL TRAILER

SHOWN IN MADURO DECOR

TRAVEL TRAILERS



# TRAVEL TRAILERS

The Leader in Affordable Luxury



## INTERIOR FEATURES

- A. Residential Faucet w/ Pullout Sprayer
- B. Large Single Basin Sink
- C. Solid Surface Countertops
- D. Arched Roof Rafters
- E. 40" LED HDTV
- F. King Size Bed (select models)
  - 50" Wide, 6' 7" Tall Shower
  - Ready for Second Air Conditioner
  - 50 amp service

## EXTERIOR FEATURES

- Grill 'N Chill Outside Kitchen (select models)
- Fiberglass Front Cap w/ Rock Guard Paint Protection and Space for Dual Batteries
- Travel Trailer Auto Leveling
- Friction Hinge Entry Door w/ Shade
- Power Adjustable Awning
- Aluminum Wheels
- Black Tank Flush
- Water Works Utility Center
- Aluminum Steps
- Frameless Windows

**LAREDO**  
by Keystone

# LAREDO

by Keystone



**INDUSTRY 1<sup>ST</sup>  
FOR TRAVEL  
TRAILERS!**

**One touch *AUTO LEVEL* feature!**



With the push of a button, Ground Control TT levels and stabilizes an RV quickly and accurately, enhancing the overall camping experience. It can take up to an hour to get an RV level with manual jacks, chocks and wedges. Ground Control saves you time by leveling and stabilizing the RV in an instant!

## Ground Control<sup>TT</sup>

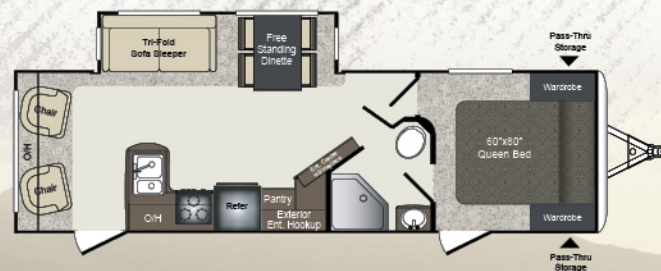
- Saves time setting up camp
- Fast, accurate automatic electric leveling
- Level coaches function more efficiently than non-level ones
- Auto re-hitch memory function
- Easy installation
- Four-point system with 20,000 lb capacity



**NOW AVAILABLE ON ALL LAREDO TRAVEL TRAILERS!**



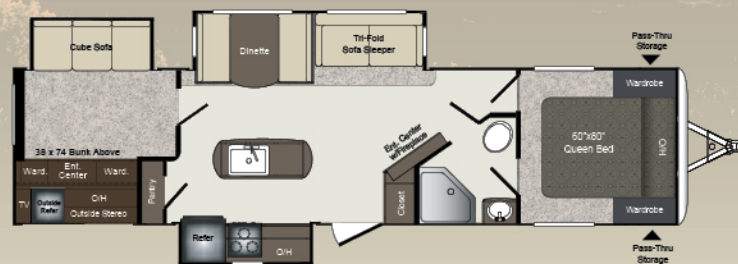
**280RB** \$



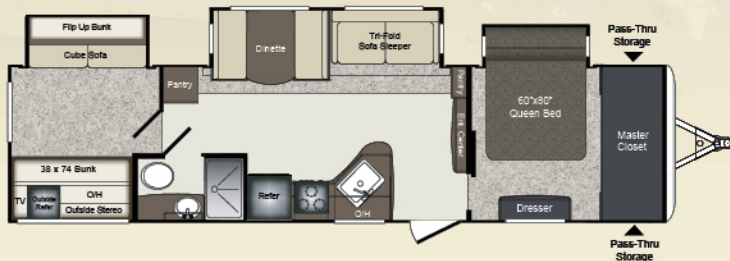
**288RL** \$



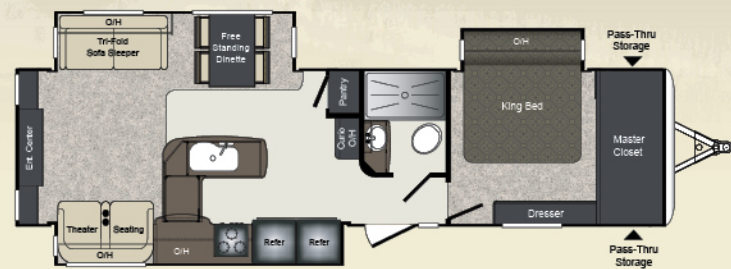
**330RL** \$



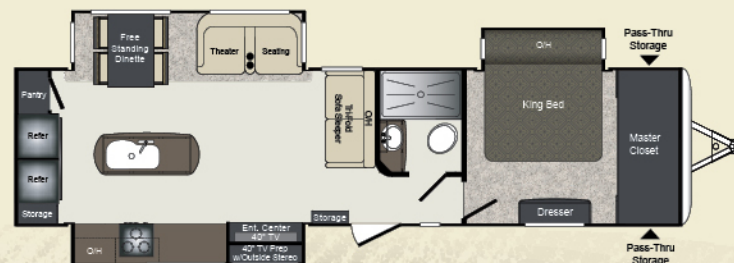
**331BH** \$



**333BH** \$



**334RE** \$



**335MK** \$

## TRAVEL TRAILER WEIGHTS & MEASUREMENTS

MODEL	SHIPPING WEIGHT	CARRYING CAPACITY	HITCH	LENGTH	HEIGHT	FRESH WATER	WASTE WATER	GRAY WATER	LPG	AWNING
280RB	6950	2945	1095	32' 5"	11' 1"	43	30	60	60	19'
288RL	6685	2925	810	32' 10"	11' 1"	43	30	60	60	18'
330RL	8355	1520	1075	37'	11' 1"	43	30	60	60	13'
331BH	8335	1540	1075	37'	11' 1"	49	32	64	60	12'
333BH	7927	1903	1030	37' 6"	11' 1"	43	30	30	60	19'
334RE	8525	1475	1245	37' 1"	11' 1"	43	30	60	60	11'
335MK	8590	1425	1215	37' 11"	11' 1"	43	30	60	60	14'/11'

**298SRL** SUPER LITE FIFTH WHEEL  
SHOWN IN MADURO DECOR

**A**

**B**

**C**

SUPER LITE FIFTH WHEELS

LAREDO





# SUPER LITE FIFTH WHEELS

Luxury Features with Lite Weight Towability



## INTERIOR FEATURES

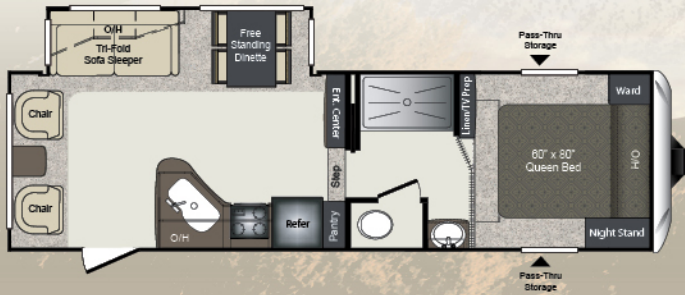
- A. Stamped Steel Arched roof rafters
- B. 8 CU. FT. Refrigerator
- C. Solid Surface Countertops
- D. Kitchen Island w/ Dual Pull-Out Trash Cans
- E. Solid Steps to Upper Deck
- F. 40" LED HDTV
- G. 12V DVD/CD/AM/FM/MP3 Player with Bluetooth
- H. 60" x 80" Queen Size Mattress
- 50 amp service

## EXTERIOR FEATURES

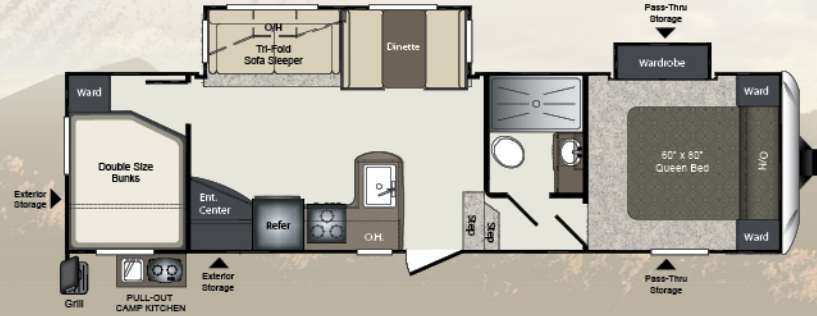
- Water Works Utility Center
- Electric Awning
- EZ Flex Suspension
- Heated Pass-Thru Storage
- Hitch Assist Mirror w/2 LED Lights
- Separate Battery Compartment
- Aluminum Wheels
- Auto Leveling
- Friction Hinge Entry Door w/Shade
- Frameless Windows

**LAREDO**  
by Keystone

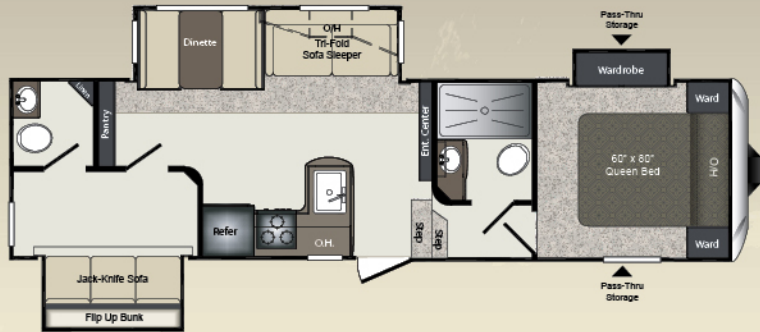
WWW.KEYSTONERV.COM/LAREDO



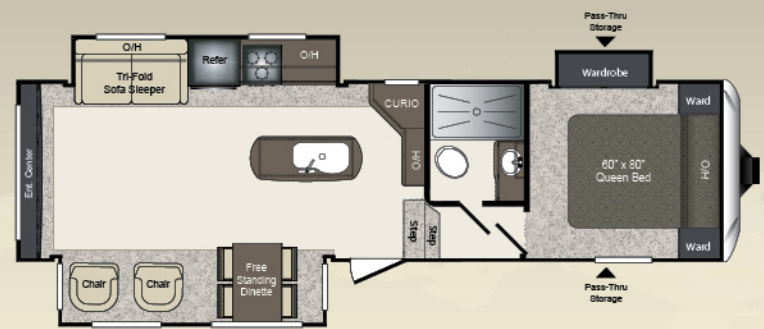
**268SRL** \$



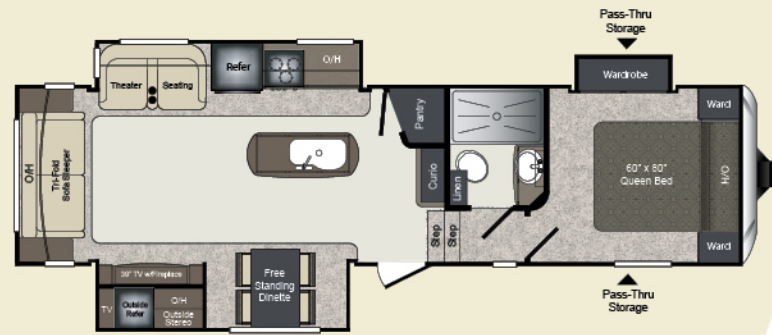
**285SBH** \$



**293SBH** \$



**297SRE** \$



**298SRL** \$

## SUPER LITE FIFTH WHEEL WEIGHTS & MEASUREMENTS

MODEL	SHIPPING WEIGHT	CARRYING CAPACITY	HITCH	LENGTH	HEIGHT	FRESH WATER	WASTE WATER	GRAY WATER	LPG	AWNING
268SRL	7205	2795	1315	30' 4"	12' 4"	43	30	60	60	13'
285SBH	7989	2011	1465	33'	12' 4"	43	30	60	60	19'
293SBH	8145	1855	1770	33'	12' 4"	43	60	60	60	14'
297SRE	8022	1978	1615	32' 6"	12' 3"	43	30	60	60	14'
298SRL	8605	1395	1390	34' 6"	12' 3"	43	30	60	60	14'

# Mid-Profile FIFTH WHEELS

“Mid-Profile” features with industry leading quality



## INTERIOR FEATURES

- A. 18 cu. ft. Gas/Electric Refrigerator
- B. Solid Surface Kitchen Countertops
- C. Flush Mount Stainless Steel Sink
- D. Solid Steps to Upper Deck
- E. King Size Mattress (select models)
- F. Washer/Dryer Prep
  - 50" LED HDTV
  - Fireplace (select models)
  - Flooring with 2 Year Cold Crack Warranty
  - 32" Bedroom TV (most models)

## EXTERIOR FEATURES

- Fiberglass Front Cap with Max Turn Technology
- Power Adjustable Awning
- 50 AMP Service
- "Saddle" Style Pass-Thru Storage
- Heated Storage Compartment
- Water Works Utility Center
- Auto Level System
- Friction Hinge Entry Door w/Shade
- Frameless Windows

**LAREDO**  
by Keystone

WWW.KEYSTONERV.COM/LAREDO

342RD

MID-PROFILE FIFTH WHEEL  
SHOWN IN CONNECTICUT DECOR



MID-PROFILE FIFTH WHEELS



**325RL** \$



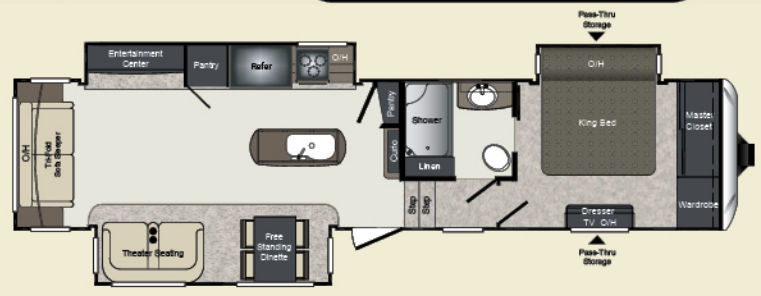
**340FL** \$



**342RD** \$



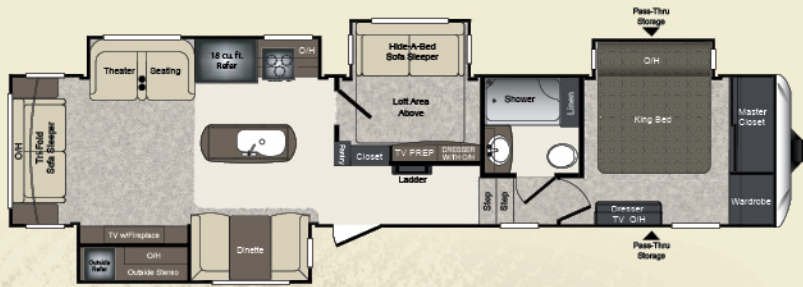
**350FB** \$



**355RL** \$



**357BH** \$



**380MB** \$

**MID-PROFILE FIFTH WHEEL WEIGHTS & MEASUREMENTS**

MODEL	SHIPPING WEIGHT	CARRYING CAPACITY	HITCH	LENGTH	HEIGHT	FRESH WATER	WASTE WATER	GRAY WATER	LPG	AWNING
325RL	10765	2235	1910	36' 8"	12' 7"	66	44	78	60	16'
340FL	10980	2020	2220	37' 7"	12' 7"	66	34	68	60	19'
342RD	11255	1745	2065	38' 4"	12' 7"	66	44	78	60	18'
350FB	11136	1864	2085	38' 1"	12' 7"	66	78	78	60	16'
355RL	10642	2358	2290	37' 11"	12' 7"	66	44	78	60	16'
357BH	11710	1790	2190	38' 2"	12' 7"	66	44	78	60	14'
380MB	12785	2715	2385	41' 7"	12' 7"	66	44	78	60	20'

# LAREDO TOP FEATURES

by Keystone

- A. Grill N Chill Outside Kitchen (select models)
- B. Large Showers in Most Models
- C. 32" Bedroom TV's (most mid-profile fifth wheel models)
- D. Vanity with Large Countertop Space (mid-profile fifth wheels)
- E. 18 Cu. Ft. Refrigerators (mid-profile)
- F. Friction Hinge Door with Built-in Shade
- G. Wood Steps in Fifth Wheel Interiors
- H. Auto Leveling Across Entire Lineup
- I. Solar Panel Prep
- J. Hybrid Aluminum Exterior Steps
- K. Backup Camera Prep
- L. LED Lighting
- M. Arched Ceilings (travel trailers and super-lite fifth wheels)
- N. Larger TV's 40"/50"
- O. 60" x 80" Queen Beds (most models)
- P. Outside Shower with Coil Hose



LAREDO TOP FEATURES

# STANDARDS & OPTIONS

● TT = TRAVEL TRAILERS

● SLFW = SUPER LITE FIFTH WHEELS

● FW = MID-PROFILE FIFTH WHEELS



## EXTERIOR

	TT	SL	FW
Fully enclosed underbelly	●	●	●
Heated, enclosed holding tanks & gate valves	●	●	●
Oversized lighted pass-thru storage	●	●	●
Roto-cast storage for wet or greasy items			●
Exterior shower w/hot & cold water	●	●	●
Folding entry assist handle	●	●	●
Exterior marine grade speakers	●	●	●
Rain gutters w/downspouts	●	●	●
Rear ladder (most models)	●	●	●
Triple entrance hybrid aluminum steps	●	●	●
Electric front jacks w/adjustable snap pins	●	●	●
Aerodynamic front cap with hitch assist mirror & 2 LED lights w/max turn technology	●	●	●
Front cap with rock guard protection and dual battery support	●		
Outside 110V outlet & TV connection	●	●	●
Water works utility center	●	●	●
Battery disconnect	●	●	●
Auto leveling jacks	●		
Solar panel prep	●	●	●
Backup camera prep	●	●	●

## TIRES & CHASSIS

	TT	SL	FW
Powder-coated I-beam frame	●	●	●
Tube style bumper w/sewer hose storage	●	●	●
Electric slideout system w/manual override	●	●	●
Adjustable extended hitch pin	●	●	●
Radial tires	●	●	●
EZ lube axles	●	●	●
10" electric brakes	●	●	
12" electric brakes	●	●	●
Full-size spare tire	●	●	●

## LIVING AREA

	TT	SL	FW
Dinette w/storage below	●	●	●
6' 3" slide room height			●
Ventilating windows on slideout end walls	●	●	●
Residential grade carpet	●	●	●
Stain resistant fabrics	●	●	●
Pleated shades	●	●	●
Designer window treatments	●	●	●
Raised panel mortise & tenon cabinet doors	●	●	●
Solid wood steps to upper deck	●	●	●
Friction hinge entry door with built-in shade	●	●	●

## KITCHEN

	TT	SL	FW
Residential-size overhead cabinets	●	●	●
Sink covers	●	●	●
60/40 deep-bowl stainless steel sink			●
Single basin sink	●	●	●
High-rise faucet with pull-out sprayer	●	●	●
Linoleum floor with cold crack warranty	●	●	●
Ball bearing full extension drawer guides	●	●	●

## BATHROOM

	TT	SL	FW
Oversized shower (select models)	●	●	●
Tub surround w/shelves	●	●	●
Foot pedal flush porcelain toilet	●	●	●
Medicine cabinet	●	●	●
Skylight over bath	●	●	●
Power roof vent	●	●	●

## BEDROOM

	TT	SL	FW
60" x 80" Innerspring mattress (most models)	●	●	
King bed (N/A 340FL, 357BH)			●
Designer matching headboard	●	●	●
Recessed headboard with outlet	●	●	●
Wardrobe storage	●	●	●
TV hook-up	●	●	●
Reading lights	●	●	●
32" bedroom TV (most models)			●
Washer/dryer prep (most models)			●

## APPLIANCES

	TT	SL	FW
12V AM/FM/CD/DVD home theater system with Bluetooth	●	●	●
Double door refrigerator	●	●	●
18 cu. ft. refrigerator			●
Microwave with carousel	●	●	●
Range hood and light	●	●	●
15,000 BTU ducted A/C	●	●	●
High output range w/auto igniter	●	●	●
Cordless vacuum			●

## UTILITIES

	TT	SL	FW
2-30 lb. LP bottles w/auto changeover	●	●	●
35,000 BTU high-output furnace w/auto ignition	●	●	●
Water heater bypass kit	●	●	●
Systems monitor panel	●	●	●
Cable & satellite connections	●	●	●

## SAFETY

	TT	SL	FW
Break away switch	●	●	●
Tinted safety glass windows	●	●	●
GFI receipts	●	●	●
Carbon monoxide detector	●	●	●
Smoke alarm	●	●	●
Propane gas leak detector	●	●	●
Fire extinguisher	●	●	●

## LIFE SIZE PACKAGE\*

	TT	SL	FW
8 cu. ft. refer	●	●	
18 cu. ft. refer			●
King bed (most models)			●
LED awning lights	●	●	●
LED ceiling lights	●	●	●
Oversize stainless steel sink			●
High-Arch pull down kitchen faucet	●	●	●
40" LED TV	●	●	●
6'3" Slide out height			●
60" x 80" residential queen mattress	●	●	
50 Amp service	●	●	●
Aluminum wheels	●	●	●
Radial tires	●	●	●
Arched ceiling	●	●	
Tri-fold sofa	●	●	●
15" tires	●	●	
16" tires			●
48" Residential Shower w/glass door			●
50" residential shower w/glass door (most floorplans)	●	●	

## BLACK LABEL PACKAGE\*

	TT	SL	FW
50" LED TV			●
18 cu. ft. refrigerator			●
Ground control auto level system	●	●	●
Equaflex suspension	●	●	●
Triple entrance hybrid aluminum steps	●	●	●
Backup light	●	●	●
Electric stabilizer jacks	●	●	●
Solid surface countertops	●	●	●
Frameless windows	●	●	●

## OPTIONS

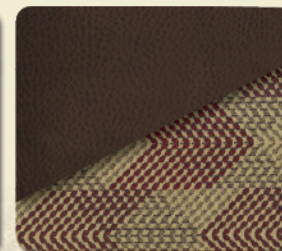
	TT	SL	FW
Free standing dinette (Mandatory 298SRL, 330RL)	●	●	●
15,000 BTU A/C (mandatory)	●	●	●
2nd 13.5 BTU A/C in bedroom	●	●	●
Recliners (268SRL, 288RL, 297SRE)	●	●	●
Canadian compliance	●	●	●
Dual pane windows			●

\*Mandatory Package

## DECOR OPTIONS



CONNECTICUT



MADURO



CHESTNUT

# PURCHASING YOUR RV LOCALLY

It's up to you where you purchase your new Laredo, but may we suggest your local dealer? Not only does it help your local economy and provide jobs, but it will also give you an opportunity to develop a service relationship with someone that will come to know you and your coach. Congratulations on finding the best built, best equipped, best value in the industry, and happy travels!



[WWW.KEYSTONERV.COM/LAREDO](http://WWW.KEYSTONERV.COM/LAREDO)

# LAREDO

by Keystone



YOUR LOCAL DEALER IS:

FEBRUARY 2017

Product information is as accurate as possible at the date of publication of this brochure. Features, floor plans, and specifications are subject to change without notice. Please also consult Keystone's web site at [keystonerv.com](http://keystonerv.com) for more current product information and specifications. Tow Vehicle Disclaimer. CAUTION: Owners of Keystone recreational vehicles are solely responsible for the selection and proper use of tow vehicles. All customers should consult with a motor vehicle manufacturer or their dealer concerning the purchase and use of suitable tow vehicles for Keystone products. Keystone disclaims any liability or damages suffered as a result of the selection, operation, use or misuse of a tow vehicle. KEYSTONE'S LIMITED WARRANTY DOES NOT COVER DAMAGE TO THE RECREATIONAL VEHICLE OR THE TOW VEHICLE AS A RESULT OF THE SELECTION, OPERATION, USE OR MISUSE OF THE TOW VEHICLE.

\*Length is defined as the distance from the centerline of the hitch pin/coupler to rear bumper of the trailer. 11/2016

Go RVing  
Life's A Trip™



2642 Hackberry Drive | PO Box 2000  
Goshen, IN 46527-2000  
(574) 535-2100



Keystone RV  
Company

[www.keystonerv.com](http://www.keystonerv.com)

