

CROSSROADS

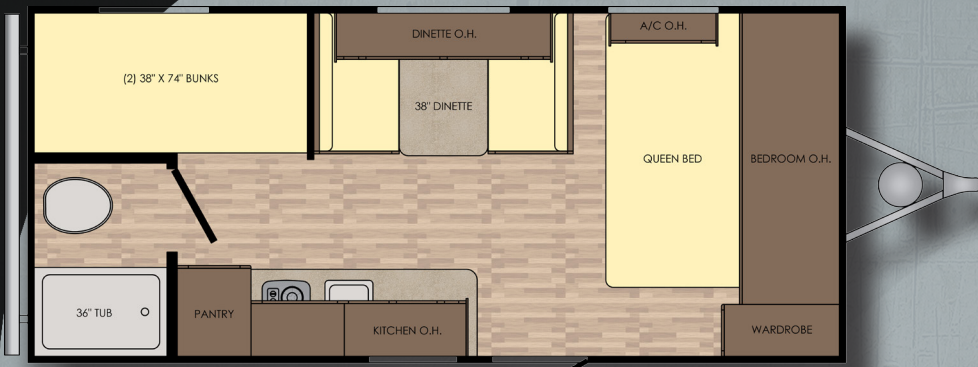
Recreational Vehicles

Z-1 SERIES ZINGER



Z-1 SERIES
ZINGER





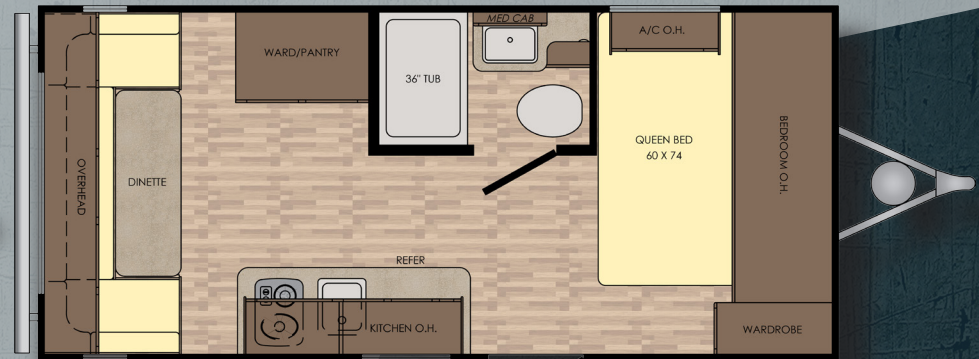
ZR-18BH



ZR-18RB



ZR-18SS



ZR-18RD

Z-1 SERIES ZINGER LITE

FLOORPLANS

MODEL	ZR-18BH	ZR-18RB	ZR-18SS	ZR-18RD
DRY WEIGHT	3246	3202	3516	3286
GVWR	4520	4460	4510	4525
CARRYING CAP.	1274	1258	994	1238
HITCH WEIGHT	520	462	514	524
LENGTH	21' 11"	20' 11"	21' 6"	21' 6"
EXT. H EIGHT W/ A/C	9' 7"	9' 7"	9' 7"	9' 7"
FRESH WATER	28 Gal	28 Gal	28 Gal	27 Gal
BLACK WATER	25 Gal	25 Gal	25 Gal	25 Gal
GRAY WATER	25 Gal	25 Gal	25 Gal	25 Gal
TIRE SIZE	ST205/75R14D	ST205/75R14D	ST205/75R14D	ST205/75R14D

Z-1 SERIES ZINGER LITE

STANDARDS

LIVING ROOM

- Designer Valances
- AM/FM Stereo w/ Bluetooth
- Mini Blinds
- Sleeper Sofa (18SS Only)
- Woodgrain Linoleum
- Generous Storage
- 78" Interior Ceiling Height
- Decorative Valances
- 8,000 BTU A/C

KITCHEN

- Range Hood w/ Light & Exhaust Fan
- Pullout Faucet
- Wall Mounted Systems Monitor Panel
- Raised Panel Cabinet Doors
- Maple Cabinets Drawers
- Microwave Oven
- 2 Burner Cooktop
- Steel Ball Bearing Drawer Guides
- Dual Pedestal Legs for Dinette

BATHROOM

- Spacious Shower/Tub
- Foot Flush Parchment Toilet
- Shower Curtain w/ Curved Shower Track
- 6 Gal Gas DSI Water Heater

BEDROOM

- 60" x 74" Mattress
- Cable TV Hook-Up
- Coordinated Window Treatments

EXTERIOR

- Aerodynamic Front End
- 28 Gal Fresh Water Tank
- Easy Open Entry Step
- Bumper with Drain Hose Storage and End Caps
- Diamond Plate Front Stone Guard
- Molded Rain Gutters with 3" Drip Spouts
- LED Strip Light
- Solar Prep
- Friction Hinge Entry Door
- Keyed-A-Like Locks Throughout
- Rear Stabilizer Jacks

SAFETY

- Safety Chains
- Break Away Switch
- Electric Brakes on All Wheels
- Carbon Monoxide Detector
- Fire Extinguisher
- GFI Electrical Outlets
- Tinted Safety Glass

SUSPENSION/FRAME/TIRES

- 14" Radial Tires - Nitrogen Filled
- 4,000lb Axles

OPTIONS

- 13.5K BTU Roof Mounted A/C
- 14" Spare Tire and Carrier
- Front Stabilizer Jacks

DECOR



Huntington

Z-1 SERIES ZINGER LITE



18BH
Kitchen



18BH Shown



Bauer
Keyed-A-
Like System



LED
Awning
Lights



18BH
Kitchen
& Dinette

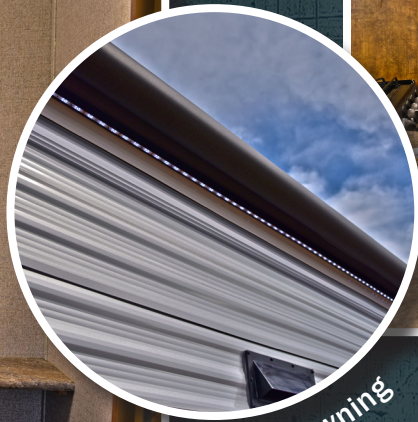
Z-1 SERIES ZINGER



211RD Bathroom



272BH Living



LED Awning



328SB Shown



Welcome to Family Fun!

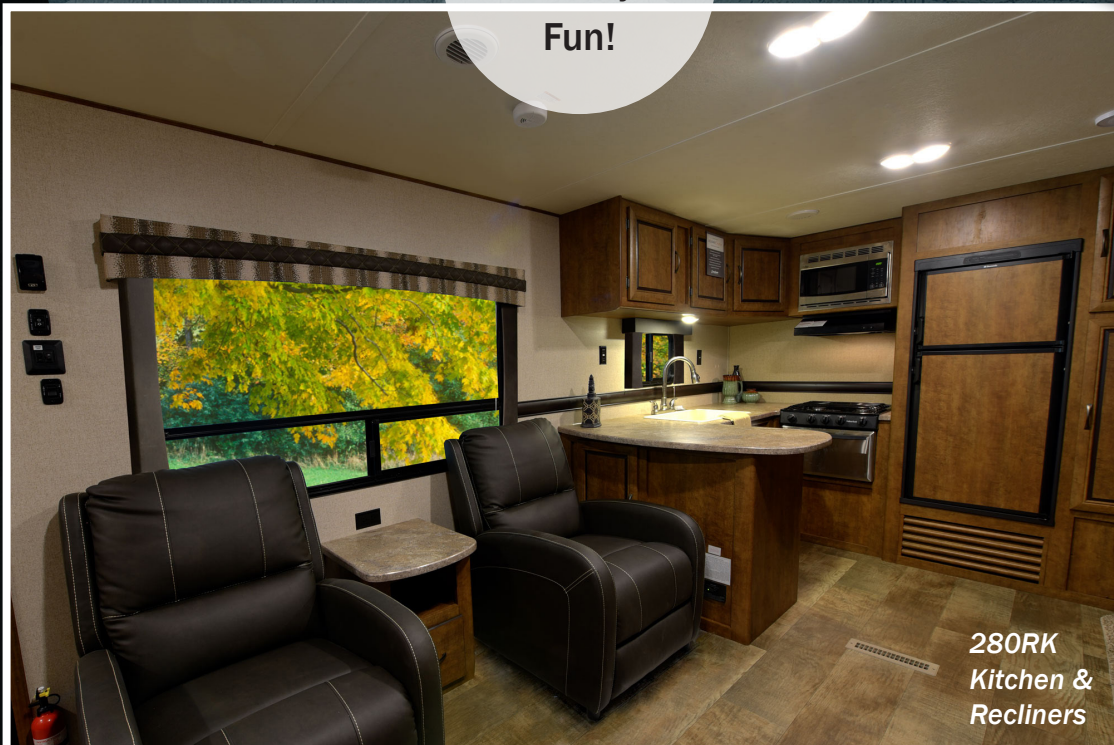
280RK Dining Slide



LCD Remote to control power awnings and slide rooms in every unit with a slideout!

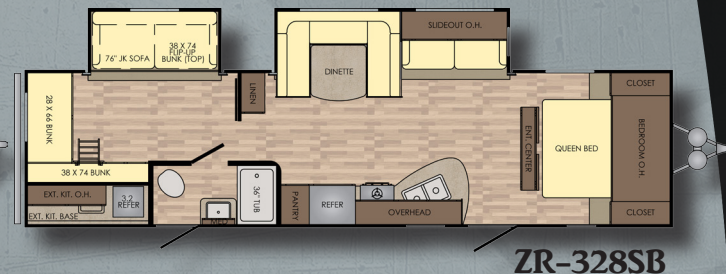
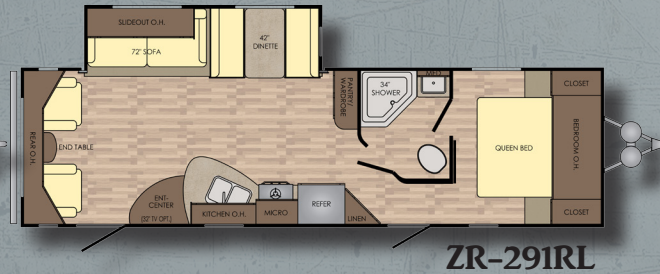
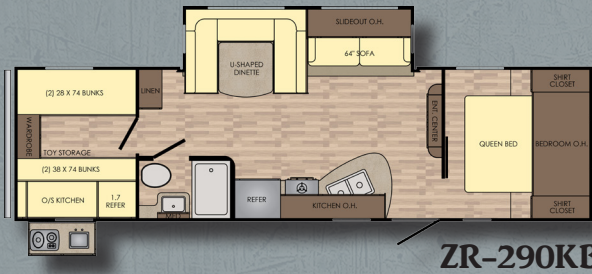
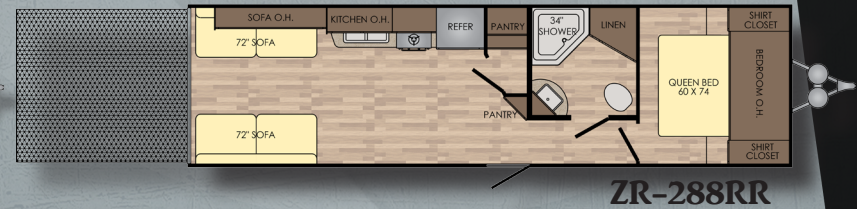
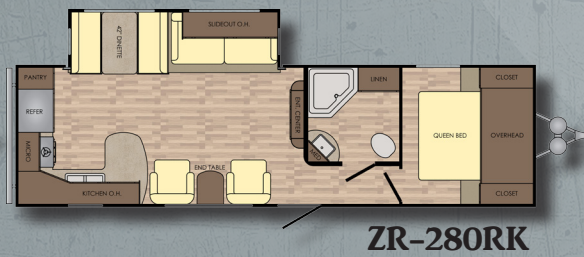
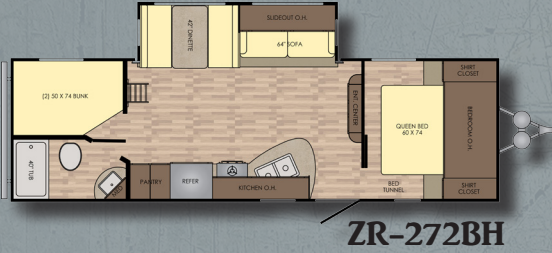
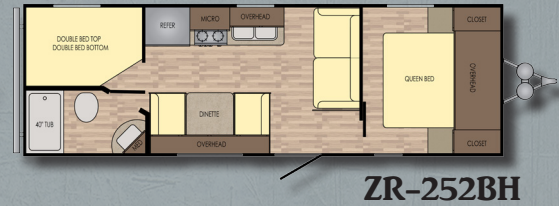
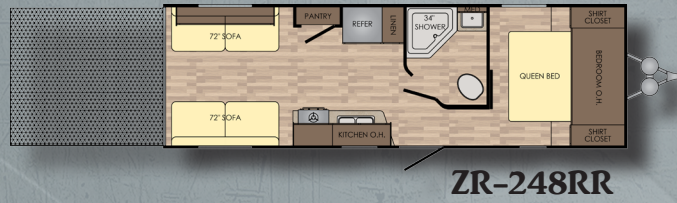
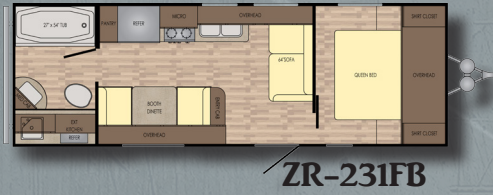
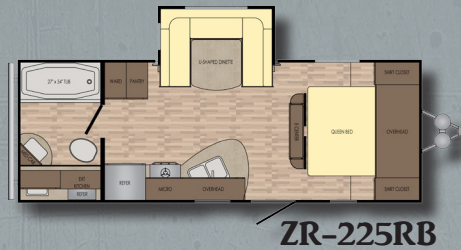
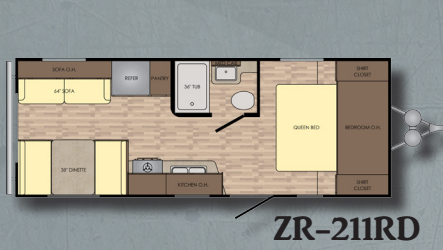
211RD Utilized Function and Space

CrossRoads Z-1 has plenty of floorplans to help you find the perfect fit for your family's needs! Not only are there a multitude of floorplans to choose from, there are also many features that allow your family to enjoy every second of your trip. From the electric awning, power tongue jack, LCD remote, outside speakers, and a fully enclosed underbelly, a Z-1 is feature packed and sure to give you a trip to remember!



280RK Kitchen & Recliners

MODEL	ZR-211RD	ZR-225RB
DRY WEIGHT	4322	5454
GVWR	6500	7660
CARRYING CAP.	2178	2206
HITCH WEIGHT	552	660
LENGTH	25' 2"	26' 4"
EXT. HEIGHT W/ A/C	10' 5"	10' 5"
FRESH WATER	45 Gal	51 Gal
BLACK WATER	25 Gal	44 Gal
GRAY WATER	25 Gal	44 Gal
TIRE SIZE	ST205/75R15C	ST205/75R15C



ZR-231FB	ZR-248RR	ZR-252BH	ZR-272BH	ZR-280RK	ZR-288RR	ZR-290KB	ZR-291RL	ZR-328SB
4836	TBA	4850	6074	6570	5776	6594	6504	7734
7625	TBA	7600	7805	9610	8045	9670	9665	9740
2789	TBA	2750	1731	3040	2269	3076	3161	2006
626	TBA	602	806	808	1048	868	866	942
27' 11"	28' 11"	28' 11"	30' 11"	32' 11"	32' 11"	33' 6"	32' 11"	36' 6"
10' 5"	11' 0"	10' 5"	11' 1"	11' 2"	11' 0"	11' 2"	11' 2"	11' 3"
45 Gal	51 Gal	45 Gal	51 Gal	51 Gal	51 Gal	51 Gal	51 Gal	51 Gal
25 Gal	44 Gal	25 Gal	44 Gal	44 Gal	44 Gal	44 Gal	44 Gal	44 Gal
25 Gal	44 Gal	50 Gal	44 Gal	88 Gal	44 Gal	44 Gal	44 Gal	44 Gal
ST205/75R15C	ST205/75R15C	ST205/75R15C	ST205/75R15C	ST225/75R15D	ST205/75R15C	ST225/75R15D	ST225/75R15D	ST225/75R15D

Z-1 SERIES ZINGER

CrossRoads RV offers a one year limited warranty on all products from the date of purchase.

This applies to units sold in the United States and Canada by authorized CrossRoads Dealers.

www.crossroadsrv.com

1140 W. Lake St Topeka, IN 46571
(260) 593 - 3850

DISCLAIMER: Product information is as accurate as possible as of the date of publication of this brochure. All features, floor plans, and specifications in this brochure are subject to change without notice. Please also consult CrossRoads' web site at www.crossroadsrv.com for more current product information and specifications. Tow Vehicle Disclaimer. CAUTION: Owners of CrossRoads recreational vehicles are solely responsible for the selection and proper use of tow vehicles. All customers should consult with a motor vehicle manufacturer or their dealer concerning the purchase and use of suitable tow vehicles for CrossRoads products. CrossRoads disclaims any liability or damages suffered as a result of the selection, operation, use or misuse of a tow vehicle. CROSSROADS' LIMITED WARRANTY DOES NOT COVER DAMAGE TO THE RECREATIONAL VEHICLE OR THE TOW VEHICLE AS A RESULT OF THE SELECTION, OPERATION, USE OR MISUSE OF THE TOW VEHICLE. REFERENCE CROSSROADS RV COMPANY OWNERS MANUAL FOR LIMITED WARRANTY DETAILS. *Length is defined as the distance from the centerline of hitch pin/coupler to rear bumper of trailer.

STANDARDS AND OPTIONS

STANDARDS

LIVING ROOM

- Designer Valances
- Wood Slide-Out Fascia (VBM)
- AM/FM Stereo System with Bluetooth and AUX Jack
- Mini Blinds
- Sleeper Sofa
- Woodgrain Linoleum
- Generous Storage
- Interior LED Lighting

KITCHEN

- Range Hood with Light & Exhaust Fan
- Wall Mounted Systems Monitor Panel
- Raised Panel Cabinet Doors
- Maple Cabinet Doors
- Maple Cabinet Drawers
- Range with 3-Burner Cook-Top
- 6 ft³ Refrigerator
- Steel Ball Bearing Drawer Guides
- Pullout Sprayer Faucet
- XL 50/50 Sink
- Stainless Steel Oven
- Stainless Steel Microwave

BATHROOM

- Large Parchment Lavatory Bowl
- Spacious Shower/Tub & One-Piece Surround
- Foot Flush Porcelain Toilet
- Mirrored Medicine Cabinet
- Shower Curtain with Curved Shower Track

BEDROOM

- 60" X 74" Mattress
- Cable TV Hook-up
- Coordinated Window Treatments
- Decorative Bedspread

EXTERIOR

- Fully Enclosed and Heated Underbelly
- Backup Camera Prep
- Solar Prep
- Friction Hinge Entry Door
- Keyed-A-Like Exterior Doors
- Aerodynamic Front End
- Easy Open Entry Step
- Bumper with Drain Hose Storage and End Caps
- 2 Marine Grade Exterior Speakers w/ LED Lights
- Diamond Plate Front Stone Guard
- Molded Rain Gutters with 3" Drip Spouts
- 30" Main Radius Entry Door with Screen Door (VBM)

SAFETY

- Safety Chains
- Break Away Switch
- Electric Brakes on All Wheels
- Carbon Monoxide Detector
- Fire Extinguisher
- GFI Electrical Outlets
- Tinted Safety Glass
- 15" Radial Tires - Nitrogen Filled

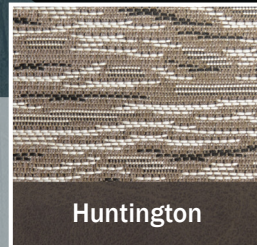
CONVENIENCE PACKAGE (STANDARD)

- Smoke Detector
- LP Detector
- 13,500 BTU A/C
- Awning
- Microwave
- Stabilizer Jacks (4)
- Power Vent in Bathroom
- TV Antenna
- Tub Surround
- Water Heater Bypass
- Quilted Bedspread

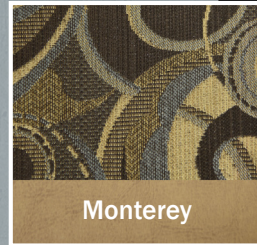
OPTIONS

- 6 Gal Gas/Elec. DSI Water Heater (Mandatory)
- Stainless Steel Oven w/ Range Top (Mandatory)
- LCD Remote System (VBM) (Mandatory)
- Enclosed Underbelly (Mandatory)
- Power Tongue Jack (Mandatory)
- Exterior Shower (Mandatory)
- Electric Awning with LED Light (Mandatory)
- LP Bottle Cover (Mandatory)
- Spare Tire and Carrier (Mandatory)
- 50 Amp Service w/ 2nd A/C Prep (328SB Only)
- 15,000 BTU Main A/C IPO 13,500 BTU
- 2nd A/C in Bedroom (328SB Only)
- Upgraded Insulation

*VBM: Varies By Model



Huntington



Monterey



Pismo

