

**WESTERN
EDITION**

BULLET

CROSSFIRE | Ultra Lite



PREMIER

— ULTRA LITE BY BULLET —



 **Keystone RV
Company**

CROSSFIRE | BULLET | PREMIER

BUILDING A LEGACY



When Cole Davis founded Keystone RV in 1996 his vision was clear: Build a quality RV loaded with features priced thousands less than other RVs on the market. To accomplish his goal, Cole built a strong team, focused on keeping overhead low, and empowered employees closest to the customer to make decisions. Within a few short months after opening the doors, Keystone produced its very first camper. Delivering big on quality, features and value, the public fell in love and a star was born.

As customers appetite skyrocketed, new Keystone models were added to satisfy growing customer demand. Along with this tremendous growth came the need for expanded production. To meet this need, more manufacturing plants were built and staffed. By the beginning of 2000, Keystone was leading the industry in fifth wheel and travel trailer sales. Today, Keystone RV Company has grown to encompass over 1 million square feet of manufacturing space with facilities in Goshen, Indiana and Pendleton, Oregon. While Keystone is no longer the small "start up" we once were, our mission has remained true to Cole's vision—"Do the job right and make sure we deliver a quality product every time."



BULLET

FROM THE BEGINNING, THE VISION HAS BEEN SIMPLE: PROVIDE CUSTOMERS AN ULTRA LITE TRAVEL TRAILER WITH UNSURPASSED QUALITY AND VALUE.

In 2009, this became reality with the Keystone Bullet. After extensive market research, rigorous product development and design the first Bullet Ultra Lite was constructed. In a few short years, Bullet Ultra Lite grew from its humble beginnings to become the #1 ultra lite travel trailer in North America.

Shortly thereafter, Keystone RV launched Premier - the industry's first luxury ultra lite. Staying true to its roots, Premier took the ultra lite segment to the next level. Still unrivaled today, Premier provides more luxury features than any other ultra lite. Bullet's innovation continued in 2015 with the launch of Bullet Crossfire. The inspiration for Bullet Crossfire arose from the need for even smaller and lighter travel trailers. **Today, the vision remains the same.**

TRUSTED RESULTS

BULLET #1

#1 ULTRA LITE TRAVEL TRAILER IN NORTH AMERICA



RVDA QUALITY CIRCLE AWARD RECIPIENT 7 YEARS



BULLET CROSSFIRE TRAVEL TRAILERS



PAGES 3-4



BULLET ULTRA LITE TRAVEL TRAILERS



PAGES 5-10



PREMIER ULTRA LITE TRAVEL TRAILERS



PAGES 11-16

BULLET

CROSSFIRE
By Keystone



2190EX SHOWN IN SADDLEBROOK DECOR



BULLET CROSSFIRE TRAVEL TRAILERS



2190EX BUNK AREA

BULLET CROSSFIRE TOP FEATURES:

- 13,500 BTU Roof A/C
- Electric Awning
- Two 20 lb. Propane Tanks w/Cover
- Spare Tire
- LED Lighting
- 6 cu. ft. Refrigerator
- Night Shades
- 9" Deep Single Basin Sink
- Full Bath w/Shower Surround



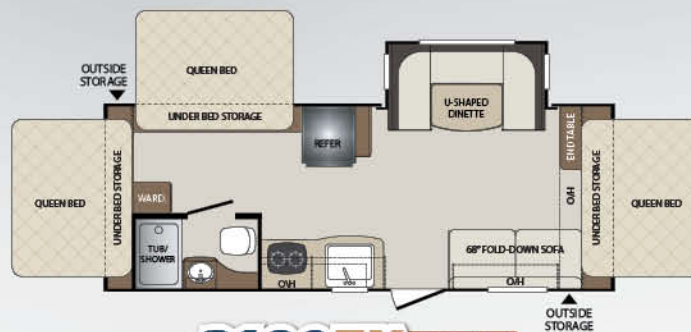
1800RB MURPHY BED SHOWN IN BED POSITION

3 BULLET CROSSFIRE GIVES YOU ALL OF THE CAMPING EXPERIENCE WITHOUT THE LARGE PRICE.

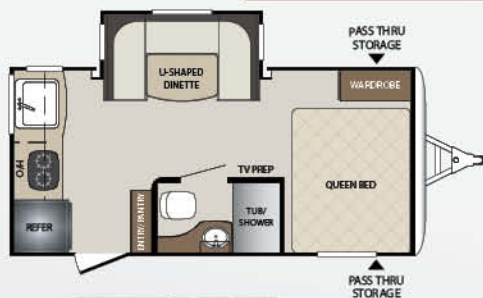
BULLET CROSSFIRE FLOOR PLANS



1650EX NEW



2190EX NEW



1750RK NEW



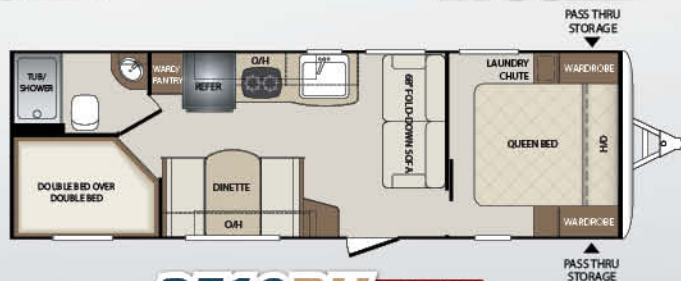
1800RB



1900RD



2070BH



2510BH NEW

CROSSFIRE WEIGHTS AND MEASUREMENTS

MODEL	SHIPPING WEIGHT	CARRYING CAPACITY	HITCH	LENGTH*	HEIGHT	FRESH WATER	WASTE WATER	GRAY WATER	LPG	AWNING
1650EX	3415	1285	435	19' 8"	10' 5"	43	30	30	40	10'
1750RK	3485	1065	400	20' 6"	10' 5"	43	30	60	40	10'
1800RB	3240	1160	440	21' 6"	10' 5"	43	30	30	40	10'
1900RD	3393	1307	485	22' 1"	10' 5"	43	30	30	40	10'
2070BH	3736	1664	420	23' 10"	10' 4"	43	30	30	40	14'
2190EX	4410	1890	560	25' 1"	10' 4"	43	30	30	40	15'
2510BH	4395	2085	480	29' 3"	10' 4"	43	30	30	40	15'

*Length is defined as the distance from the centerline of the hitch pin/coupler to rear bumper of the trailer. SEE DISCLAIMER ON BACK PAGE.

BULLET

Ultra Lite
by Keystone



269RLSWE SHOWN IN GUNMETAL DECOR



EASY TO TOW WITH THE NEW MORE FUEL EFFICIENT CROSSOVERS, CARS AND TRUCKS; THE BULLET ULTRA LITE TRAVEL TRAILER HERALDS IN A NEW GENERATION OF RVs.

Sleek and smooth on the outside and loaded with features and conveniences inside, the Bullet Ultra Lite will set you free to explore the open road.



248RKSWE BEDROOM



330BHSWE SHOWN IN SADDLEBROOK DECOR



248RKSWE MAIN SLIDE SHOWN IN GUNMETAL DECOR



330BHSWE BUNKROOM

BULLET ULTRA LITE EXTERIOR FEATURES



3 Year Warranty on BGS Exterior Graphics in AZ, CA, FL, NV, NM, TX, UT



Outside Kitchen (243BHSWE, 277BHSWE, 287QBSWE, and 311BHSWE)



Enclosed Underbelly with Ducted Heat



Magnetic Baggage Door Catches



Power Awning with LED Lights



43" Wide Stance Dexter Axles with 15" Wheels



Solar Prep



Power Tongue Jack



Aluminum Framing Throughout (including slide boxes, pass-thru storage)

BULLET ULTRA LITE INTERIOR FEATURES



32" LED TV in Main Living Area



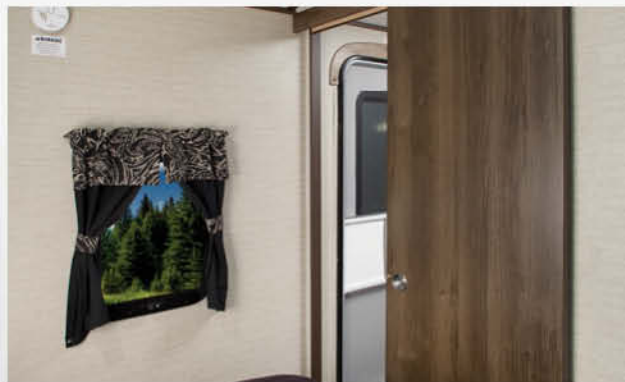
Storage Doors Underneath Dinette Seating



Laundry Chute in Master Bedroom



Super Slides with Four Windows and Standard Tri-Fold Sofa



Solid Wood Entry Doors to Bedroom and Bunkrooms



Flush Mount Range with Glass Top



Porcelain Toilet



9" Deep Single Basin Kitchen Sink (N/A 220RBIWE, 265RBIWE, 311BHSWE, and 330BHSWE)



BULLET
Ultra Lite
by Keystone

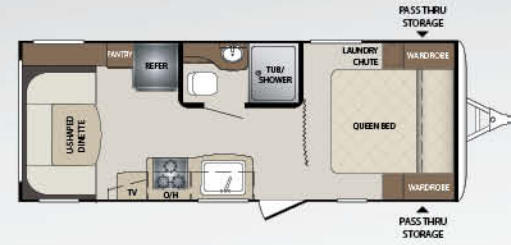
BULLET ULTRA LITE FLOOR PLANS



202BHSWE NEW



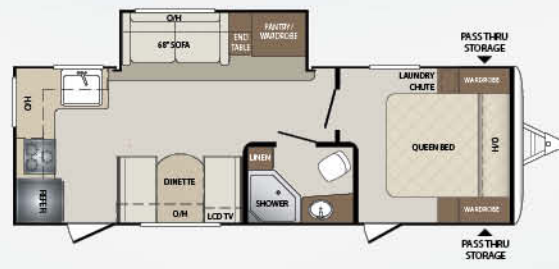
204RBSWE



210RUDWE



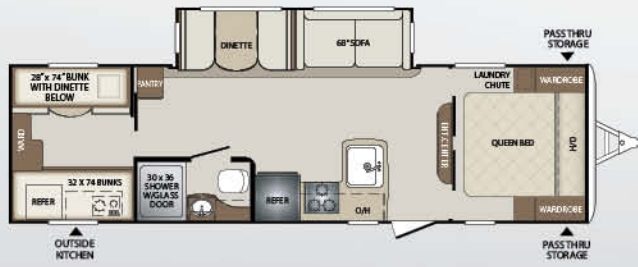
247BHSWE



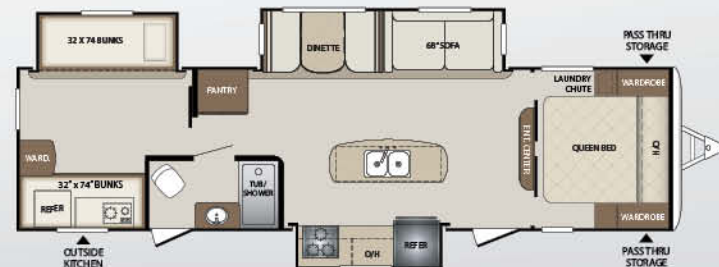
248RKSWE



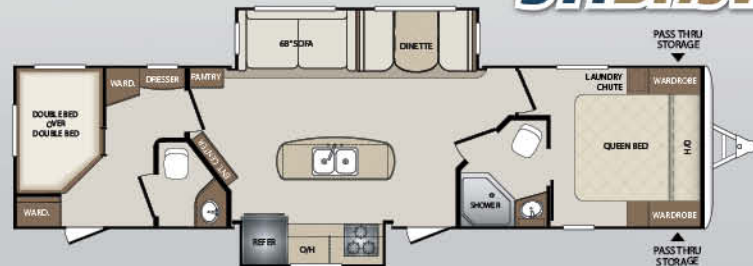
265RBIWE NEW



287QBSWE



311BHSWE



330BHSWE NEW

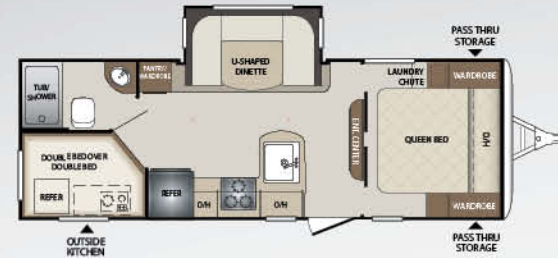
BULLET ULTRA LITE FLOOR PLANS



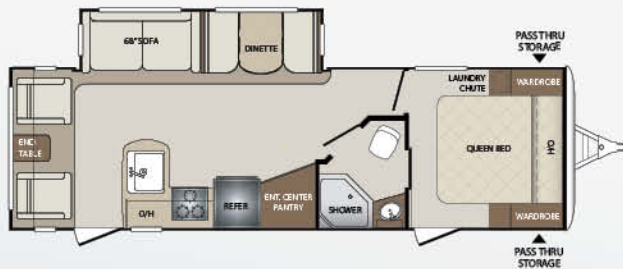
212RBSWE



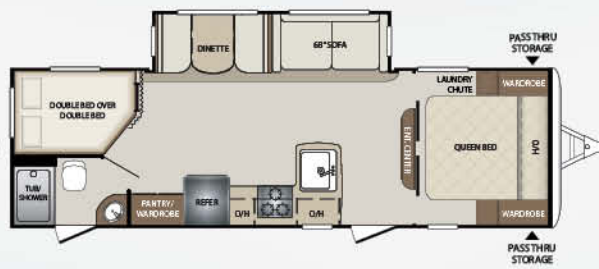
220RBIWE



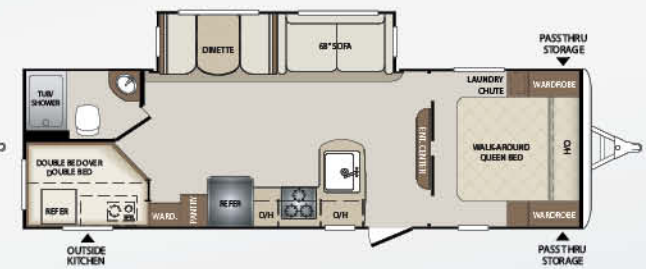
243BHSWE NEW



269RLS UPDATED



272BHSWE



277BHSWE NEW

BULLET WEIGHTS AND MEASUREMENTS

MODEL	SHIPPING WEIGHT	CARRYING CAPACITY	HITCH	LENGTH*	HEIGHT	FRESH WATER	WASTE WATER	GRAY WATER	LPG	AWNING
202BHSWE	3953	2047	406	23' 10"	10' 10"	43	30	30	40	14'
204RBSWE	3894	2106	440	23' 11"	10' 10"	43	30	30	40	15'
210RUDWE	4062	2338	464	25' 5"	10' 10"	43	30	30	40	15'
212RBSWE	4588	2212	490	25' 6"	10' 10"	43	30	30	40	10'
220RBIWE	4735	1665	480	25' 7"	10' 10"	43	30	30	40	15'
243BHSWE	4931	1569	596	27' 10"	10' 10"	43	30	30	40	19'
247BHSWE	4801	2199	510	28' 3"	10' 10"	43	30	30	40	15'
248RKSWE	5020	2180	606	28' 10"	10' 10"	43	30	60	40	15'
265RBIWE	5774	1826	602	30' 4"	10' 10"	43	30	60	40	15'
269RLSWE	5470	2130	640	31' 5"	10' 10"	43	30	30	40	15'
272BHSWE	5285	2285	570	30' 9"	10' 10"	43	30	30	40	15'
277BHSWE	5598	2028	626	31' 7"	10' 10"	43	30	60	40	20'
287QBSWE	5814	1786	740	32' 10"	10' 10"	43	30	30	40	15'
311BHSWE	6968	1832	850	35' 8"	11' 1"	43	30	60	40	19'
330BHSWE	7050	1550	886	37' 6"	11' 1"	43	60	30	40	20'

*Length is defined as the distance from the centerline of the hitch pin/coupler to rear bumper of the trailer. SEE DISCLAIMER ON BACK PAGE.

PREMIER

ULTRA LITE BY BULLET

PREMIER TRAVEL TRAILERS



34BHPR SHOWN IN SADDLEBROOK DECOR



**THE INDUSTRY'S FIRST LUXURY
LIGHTWEIGHT TRAVEL TRAILER.**

Premier offers luxury, progressive styling, and high impact features all at a weight & price never seen before.

11



30R1PR KITCHEN WITH OPTIONAL FREE-STANDING DINETTE AND CHAIRS



34BHPR BUNKROOM



24RKPR SHOWN IN SADDLEBROOK DECOR



OPTIONAL FREE-STANDING DINETTE



26RBPR SHOWN IN GUNMETAL DECOR

PREMIER EXTERIOR FEATURES



Full Fiberglass Automotive Painted Cap with LED Docking Lights



Tinted Frameless Privacy Windows



Enclosed Underbelly with Ducted Heat



Magnetic Baggage Door Catches



Power Awning with LED Lights



43" Wide Stance Dexter Axles



Slam Latch Baggage Doors



Triple 9" Easy Entrance Steps



TPO Roll Over Roof

PREMIER INTERIOR FEATURES



Vaulted Ceiling



Stor-Mor Drawers Under Booth Dinette



Laundry Chute in Master Bedroom



LG Solid Surface Countertops in Kitchen



8 cu. ft. Refrigerator



Residential Backsplash in Kitchen



LED Puck Lights

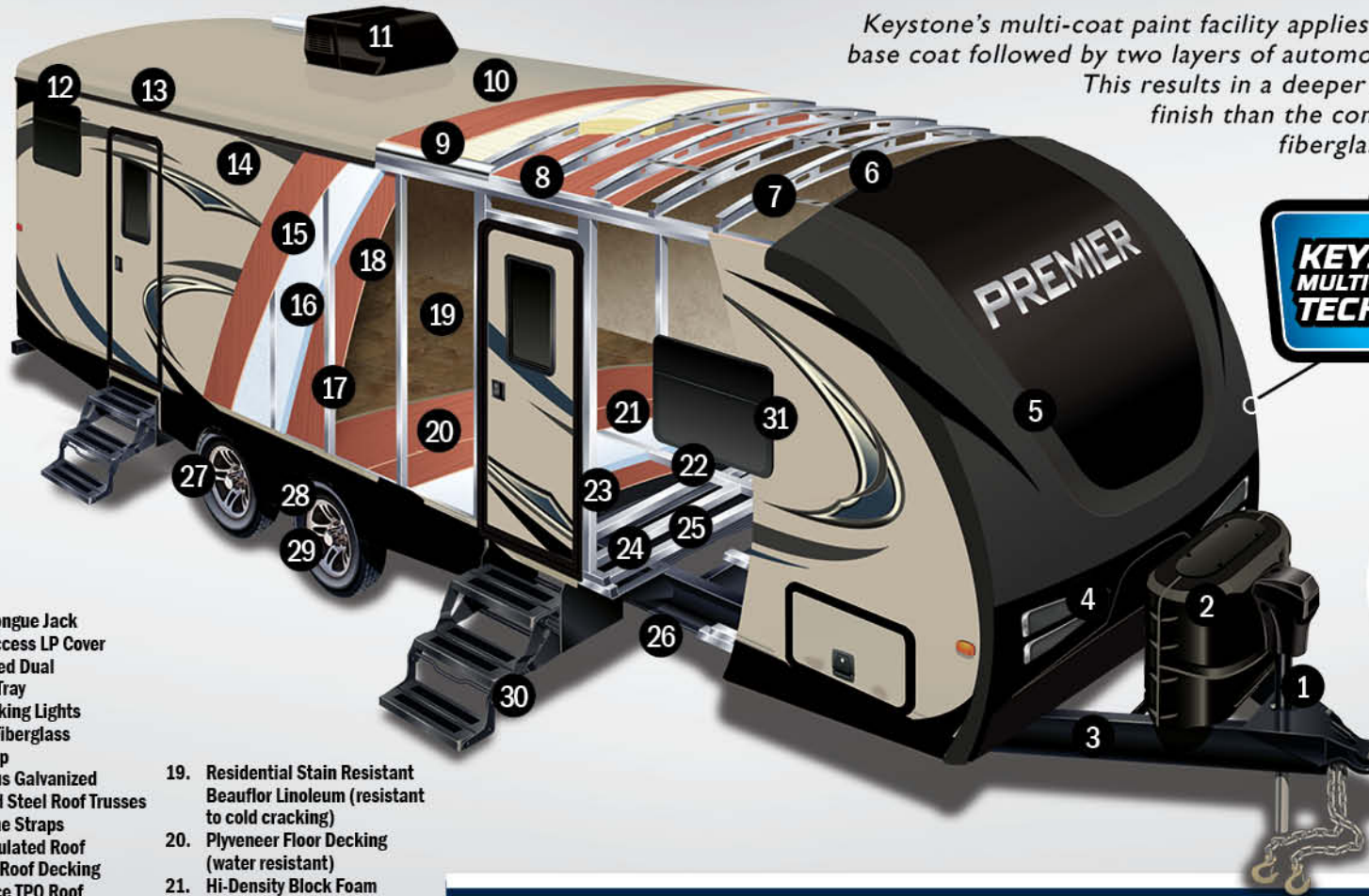


60" x 80" Residential Queen Size Beds



Stainless Steel Dual Basin Sink w/ Pull-Down Sprayer Faucet

PREMIER CONSTRUCTION



Keystone's multi-coat paint facility applies three layers of base coat followed by two layers of automotive clear coat. This results in a deeper color & shinier finish than the competitors dyed fiberglass or ABS caps.



1. Power Tongue Jack
2. Quick Access LP Cover
3. Integrated Dual Battery Tray
4. LED Docking Lights
5. Radius Fiberglass Front Cap
6. 5" Radius Galvanized Stamped Steel Roof Trusses
7. Hurricane Straps
8. Fully Insulated Roof
9. Durable Roof Decking
10. One Piece TPO Roof
11. 13,500 BTU Quick Cool Air Conditioning (optional 2nd 13,500 BTU A/C)
12. Full Length Rain Gutter and 4" Drip Spouts
13. Rolled Roof Edge
14. Smooth Fiberglass Exterior
15. 1/8" Luan Wall Backing
16. Hi-Density Block Foam Insulation
17. 1 1/2" Box Double Welded Aluminum Frame Structure
18. Decorative Interior Wall Board
19. Residential Stain Resistant Beauflor Linoleum (resistant to cold cracking)
20. Plyveneer Floor Decking (water resistant)
21. Hi-Density Block Foam Insulation in Floor
22. Double Welded Aluminum Floor Joists
23. 3rd Layer Floor Decking
24. 7.5" - 10.5" Steel Z-Beam Frame
25. Darco Vapor Barrier Wrap
26. Heated and Enclosed Underbelly
27. Radial Tires with Electric Brakes (4)
28. 43" Wide Stance Axles
29. Easy Lube Axles
30. Triple Entry Radius Entry Steps
31. Frameless Jalousie Tinted Windows



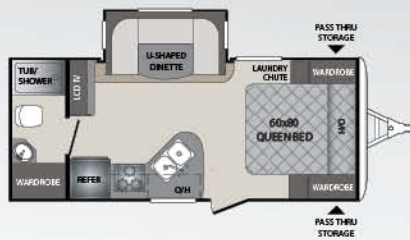
BENEFITS OF A MOLDED PAINTED FIBERGLASS FRONT CAP

- ✓ 1/4" thick molded painted fiberglass won't cold crack and is strong enough to hold up to rock damage unlike competitors ABS panels.
- ✓ A true "cap" is molded over the edges of the sidewall/roof/floor and "caps" the front end of the trailer preventing any water leaks. Many competitors "caps" are flat ABS panels that have 90 degree seams where it meets the sidewall. They also have a seam between the panel and rock guard which invites water intrusion.

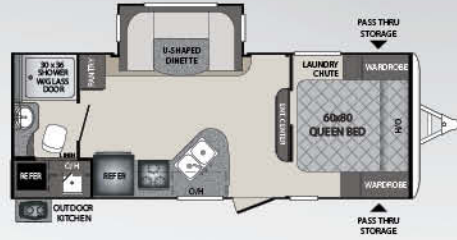
COMPETITION



PREMIER FLOOR PLANS



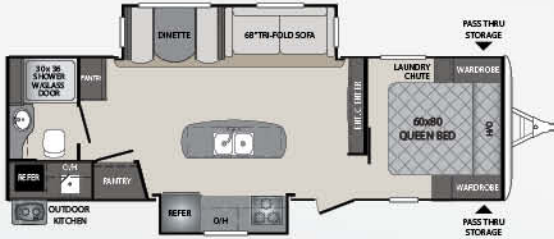
19FBPR



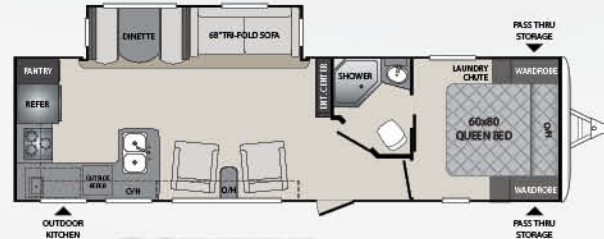
22RBPR



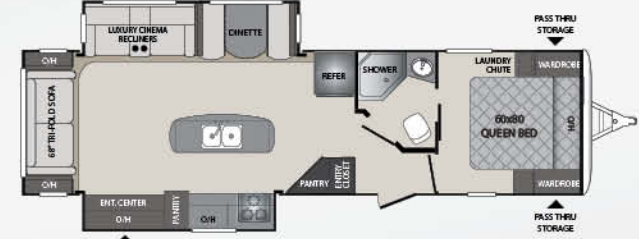
24RKPR NEW



26RBPR



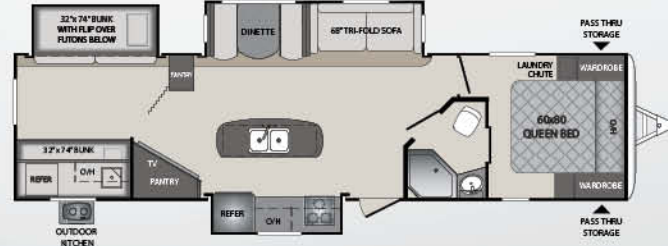
29RKPR UPDATED



30RIPR



31BKPR NEW



34BHPR

PREMIER WEIGHTS AND MEASUREMENTS

MODEL	SHIPPING WEIGHT	CARRYING CAPACITY	HITCH	LENGTH*	HEIGHT	FRESH WATER	WASTE WATER	GRAY WATER	LPG	AWNING
19FBPR	4246	2230	485	23' 9"	11'	43	30	30	40	14'
22RBPR	4885	1615	595	26' 5"	11'	43	30	30	40	15'
24RKPR	5455	2085	655	29'	11'	43	30	60	40	15'
26RBPR	5995	1535	765	31' 6"	11'	43	30	60	40	20'
29RKPR	6145	1545	690	33' 11"	11' 1"	43	30	60	40	15'
30RIPR	6667	1525	740	35' 5"	11' 2"	43	30	60	40	20'
31BKPR	6750	2165	850	35' 11"	11' 4"	43	30	30	40	19'
34BHPR	7075	1670	790	37' 7"	11' 4"	43	30	60	40	19'

*Length is defined as the distance from the centerline of the hitch pin/coupler to rear bumper of the trailer. SEE DISCLAIMER ON BACK PAGE.

DECOR OPTIONS



Stay in Touch



LEARN MORE



Bullet Crossfire, Bullet Ultra-Lite and Premier is always just a touch away. You'll find 360 virtual tours, location of your nearest dealer, photos, videos and all of the latest information on our easy to navigate website.

Everything you need can be accessed anytime, day or night, from home or on the road.

You can also find us on the Keystone RV Facebook page.

www.keystonerv.com/Bullet

BULLET
CROSSFIRE

www.keystonerv.com/Bullet

BULLET
Ultra Lite

www.keystonerv.com/Premier

PREMIER
— ULTRA LITE BY BULLET —

	CROSSFIRE	BULLET	PREMIER
CONSTRUCTION STANDARDS			
Aggressive Front Profile for Increased Towability	●	●	●
Aluminum Framed Front, Rear, and Side Walls	●	●	●
Aluminum Framed Slideouts	●	●	●
Laminated Fiberglass Exterior Side Walls	●	●	●
2" Thick Laminated Aluminum Floor	●	●	●
Darco Moisture Barrier	●	●	●
One Piece TPO Roof	●	●	●
E-Z Lube Dexter Axles	●	●	●
Electric Brake System (4 wheels)	●	●	●
R-11 Insulation in Floor	●	●	●
R-7 Insulation in Sidewalls	●	●	●
R-11 Insulation in Roof	●	●	●
In Frame Fresh, Grey, and Black Water Tanks	●	●	●
7.5" - 10.5" Steel Z-Beam with Full-Length Welded Outrigger	●	●	●
¼" ABS Enclosed Underbelly	●	●	●
EXTERIOR CAMPING PACKAGE			
6 Gallon Gas/Electric DSI Water Heater with Quick Recovery	●	●	●
Radius Entry Door with Gas Strut	●	●	●
Outside Speakers	●	●	●
4 Stabilizer Jacks	●	●	●
TV Antenna and Cable/Satellite Hook-Up	●	●	●
Radial Tires	●	●	●
Electric Awning	●	●	●
LED Awning Light	●	●	●
Wide Stance E-Z Lube Dexter Axles	●	●	●
Outside Shower (Hot and Cold Water)	●	●	●
Black Tank Flush	●	●	●
EXTERIOR FEATURES			
Dual Propane Tanks with Cover	●	●	●
In Frame Dual Battery Rack	●	●	●
Spare Tire	●	●	●
Extended 4" Down Spouts	●	●	●
Front Diamond Plate	●	●	●
Oversized Grab Handle (main door)	●	●	●
Power Tongue Jack	●	●	●
Magnetic Storage Door Catches	●	●	●
Aluminum Wheels	●	●	●
Oversized Exterior Pass Thru Storage with Lighting	●	●	●
LP Quick Connect	●	●	●

	CROSSFIRE	BULLET	PREMIER
EXTERIOR FEATURES (CONTINUED)			
Solar Prep	●	●	●
15" Tires	●	●	●
Outdoor Kitchen with Galvanized Countertop (22RBPR, 29RKPR, 30RIPR, 31BHPR, 34BHPR)	●	●	●
9" Triple Entry Steps	●	●	●
INTERIOR CAMPING PACKAGE			
13.5 BTU A/C	●	●	●
Night Shades	●	●	●
Bluetooth Stereo with Aux and I-Pod Hookup	●	●	●
Microwave	●	●	●
Hardwood Cabinet Doors	●	●	●
Foot Flush Toilet	●	●	●
Tub Surround with Shelves	●	●	●
Full Extension Drawer Glides	●	●	●
9" Deep Oversized Single Basin Sink with High Rise Faucet (N/A 220, 311)	●	●	●
6 cu./ft. Double Door Refrigerator	●	●	●
32" LED TV (19FBPR, 22RBPR, 29RKPR, 30REPR, 31BHPR)	●	●	●
Flush Mount 3 Burner Range with Glass Cover	●	●	●
2 Burner Cooktop	●	●	●
Stainless Steel Sink	●	●	●
42" LED TV (26RBPR, 30RIPR, 34BH)	●	●	●
8 cu./ft. Double Door Refrigerator	●	●	●
INTERIOR FEATURES			
Residential Style Furniture	●	●	●
Night Shades in Living Area	●	●	●
Water Heater-By-Pass for Winterization	●	●	●
Interior LED Lights	●	●	●
17" Oven	●	●	●
Porcelain Toilet	●	●	●
Standard Tri-Fold Sofa (N/A 202, 210, 212, 220, 243, 247)	●	●	●
Back Splash (residential)	●	●	●
Stor-mor Dinette	●	●	●
Retractable Kitchen Faucet	●	●	●
BATHROOM			
Towel Hooks	●	●	●
Power Vent Fan	●	●	●
Solid Wood Medicine Cabinet	●	●	●
Linen Storage	●	●	●
Deluxe Curved Shower Curtain	●	●	●
Oversized Showers w/GlassDoor (N/A on 19FBPR, 31BHPR)	●	●	●

	CROSSFIRE	BULLET	PREMIER
MASTER BEDROOM			
Upgraded Foam Mattress	●	●	●
Dual 110V Outlets	●	●	●
Mirrored Wardrobes	●	●	●
Under Bed Storage	●	●	●
Full Blackout Window Curtains	●	●	●
Individual LED Reading Lights	●	●	●
Hardwood Entry Doors	●	●	●
Laundry Chute	●	●	●
SAFETY EQUIPMENT			
Carbon Monoxide Detector	●	●	●
Smoke Alarm	●	●	●
Fire Extinguisher	●	●	●
Electric Brakes	●	●	●
Safety Chains	●	●	●
Frameless Tinted Safety Glass Windows, Egress Windows (Fire Escape)	●	●	●
GFI Recepticalss	●	●	●
OPTIONS			
RVQ Grill	●	●	●
15K A/C	●	●	●
50 AMP Service w/second A/C (N/A Premier 19FBPR, 22RBPR) (Bullet 308, 311, 330 Only)	●	●	●
THERMAL PACKAGE			
Ducted Heat and Enclosed Heated Underbelly	●	●	●
2" Duct off of Furnace to Underbelly	●	●	●
30K BTU Furnace and Residential Heat Ducts	●	●	●
PREMIER PACKAGE			
Aerodynamic Fiberglass Front Cap	●	●	●
6' 11" Vaulted Ceiling	●	●	●
Frameless Tinted Windows	●	●	●
Power Tongue Jack	●	●	●
Tri-Fold Sofa	●	●	●
Max Depth Slides	●	●	●
LED Flush Mounted Puck Lighting	●	●	●
Upgraded Exterior Graphics Package	●	●	●
Black Tank Flush	●	●	●

DSI
 Annual RVDA DEALER
 SATISFACTION INDEX
AWARD WINNER
 7 years IN A ROW

LEARN MORE



BULLET
 CROSSFIRE

BULLET
 Ultra Lite

PREMIER
 — ULTRA LITE BY BULLET —

WWW.KEYSTONERV.COM/BULLET



CONNECT WITH KEYSTONE RV AND STAY UP TO DATE WITH PRODUCT NEWS AND INFORMATION



2642 Hackberry Drive
 PO Box 2000
 Goshen, IN 46527-2000
 (574) 535-2100

Keystone RV Company
www.keystonerv.com

YOUR LOCAL DEALER:

BUY LOCAL PURCHASING YOUR RV LOCALLY

DECEMBER 2016

It's up to you where you purchase your new Bullet, but may we suggest your local dealer? Not only does it help your local economy and provide jobs, but it will also give you an opportunity to develop a service relationship with someone that will come to know you and your coach. Congratulations on finding the best built, best equipped, best value in the industry, and happy travels!

Product information is as accurate as possible at the date of publication of this brochure. Features, floor plans, and specifications are subject to change without notice. Please also consult Keystone's web site at keystonerv.com for more current product information and specifications. Tow Vehicle Disclaimer. CAUTION: Owners of Keystone recreational vehicles are solely responsible for the selection and proper use of tow vehicles. All customers should consult with a motor vehicle manufacturer or their dealer concerning the purchase and use of suitable tow vehicles for Keystone products. Keystone disclaims any liability or damages suffered as a result of the selection, operation, use or misuse of a tow vehicle. KEYSTONE'S LIMITED WARRANTY DOES NOT COVER DAMAGE TO THE RECREATIONAL VEHICLE OR THE TOW VEHICLE AS A RESULT OF THE SELECTION, OPERATION, USE OR MISUSE OF THE TOW VEHICLE. *Length is defined as the distance from the centerline to the hitch pin/coupler to rear bumper of the trailer.