

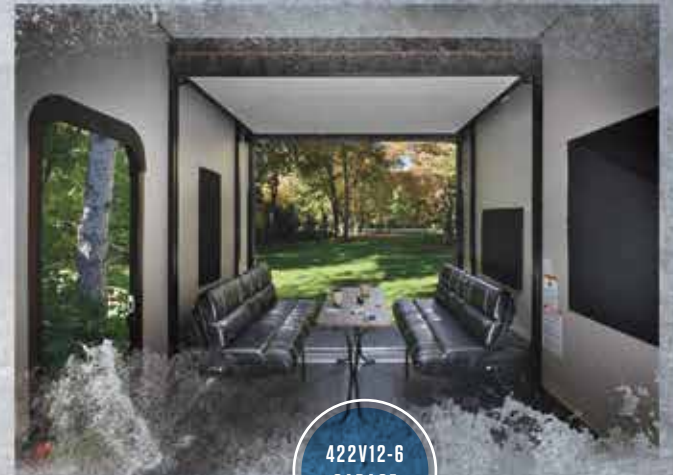
VENGEANCE

FIFTH WHEELS & TRAVEL TRAILERS





WHY BUY ANYTHING ELSE...



422V12-6
GARAGE

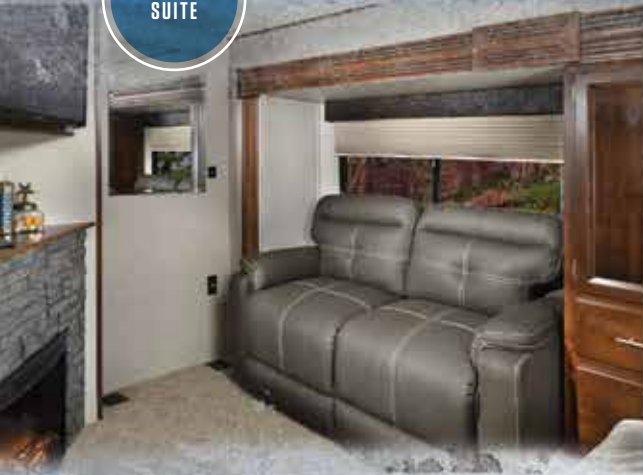


422V12-6
BATHROOM

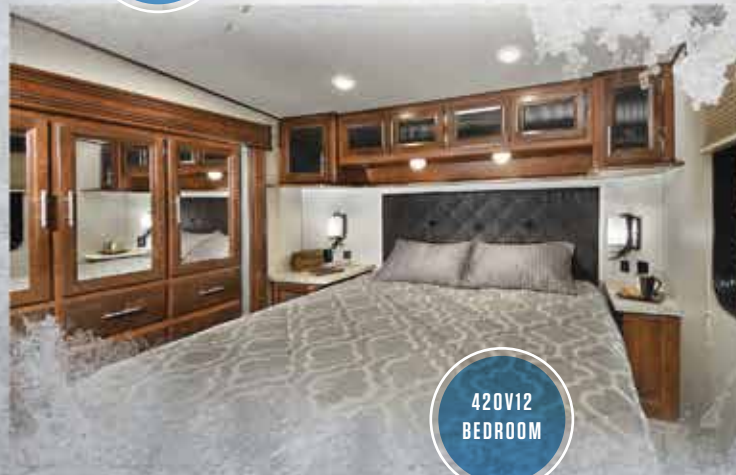


422V12-6
LIVING ROOM

420V12
SUITE



420V12
KITCHEN



420V12
BEDROOM

UNPARALLELED DESIGN & COMFORT

FLOORPLANS THAT FIT YOUR NEEDS
& FEATURES THAT YOU WANT.

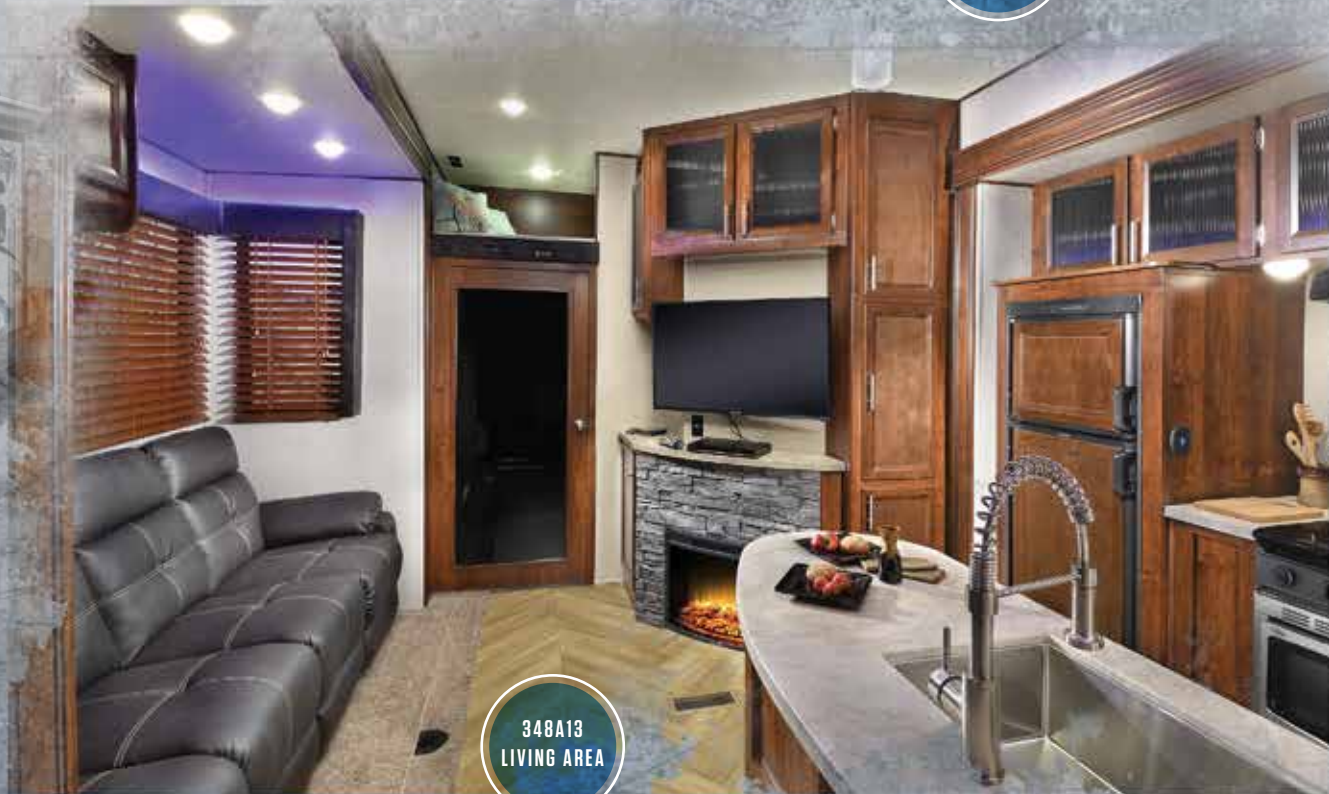
VALUE THAT CAN'T BE BEAT.



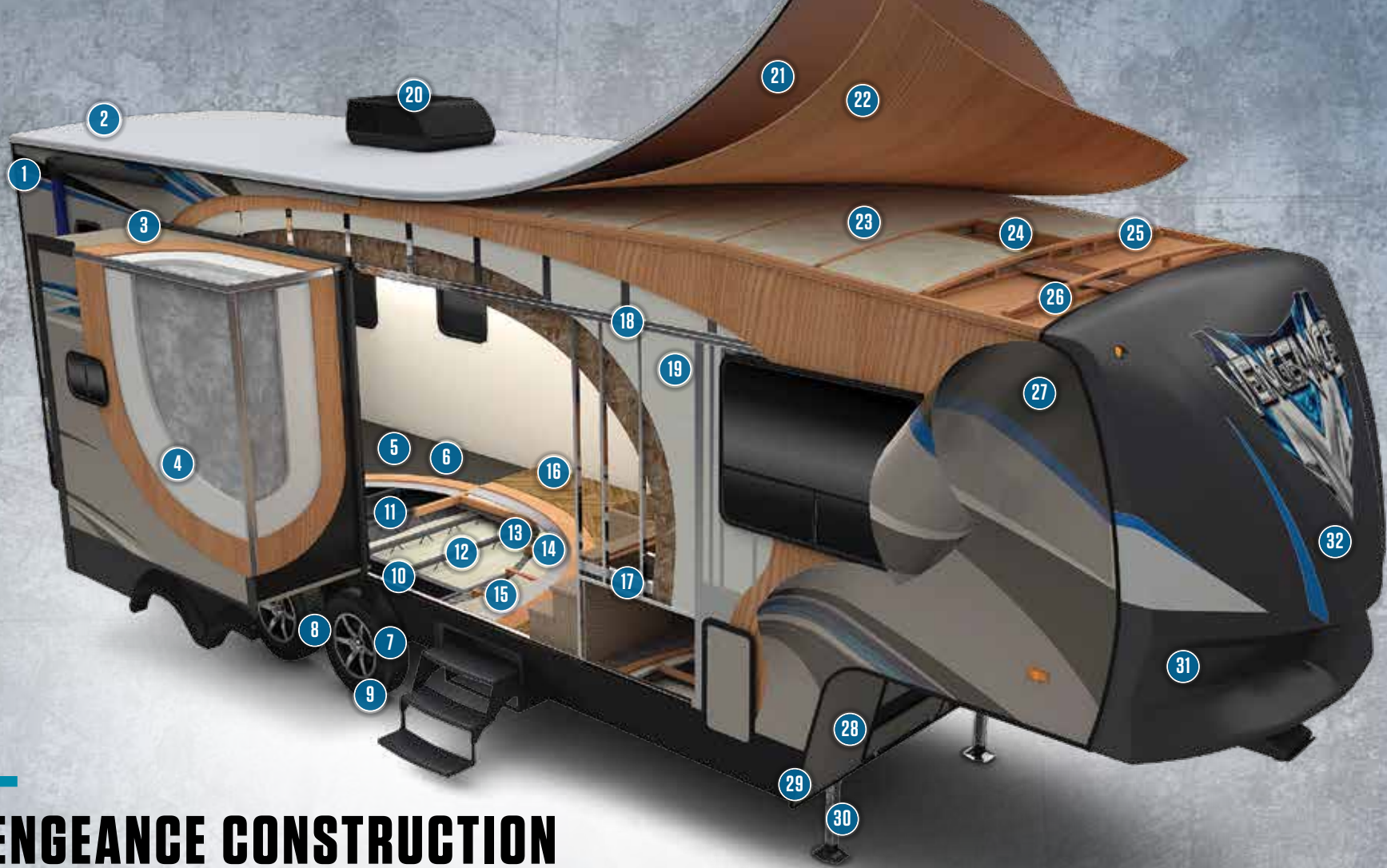
348A13
KITCHEN



348A13
REAR PATIO



348A13
LIVING AREA



VENGEANCE CONSTRUCTION

QUALITY BUILT EVERY TIME.

1 Dual power awnings w/ LED strip lighting (select floor plans)

2 Full walk-on roof

3 Aluminum framed, vacuum bonded, slide out roof

4 Aluminum framed, vacuum bonded, slide out side walls

5 1" garage floor decking w/3,000 lb cargo capacity

6 Tuff ply cargo flooring in garage

7 7,000 lb. Axles

8 Equa Flex Suspension

9 Radial Tires

10 True wide I-Beam chassis

11 Fluted polypropylene enclosed underbelly

12 Baton insulation layer

13 Polyethylene subfloor wrap

14 2x3 Wood floor joists

15 Baton insulation

16 Tongue in groove plywood floor

17 Aluminum framed laminated bed/bath floor

18 2" Welded aluminum wall studs

19 Block foam wall insulation

20 15,000 BTU A/C

21 One piece PVC roof material

22 3/8" Roof decking

23 Baton insulation layer

24 Bedroom A/C Prep

25 5" Bowed wood truss rafters

26 Aluminum A/C Ducting

27 Vacuum bonded fiberglass side walls

28 102" Wide body

29 Electric front landing gear on 2 axle models

30 Hydraulic front landing gear on 3 axle models (Not shown on 2 axle illustration)

31 Aerodynamic front cap design

32 Painted fiberglass front cap w/LED lighting



MODEL: **312A**
 EXTERIOR LENGTH: **38'9"**
 SHIP WEIGHT: **10,666 LBS**
 HITCH WEIGHT: **2,001 LBS**

QUEEN BED



MODEL: **348A13**
 EXTERIOR LENGTH: **40'10"**
 SHIP WEIGHT: **11,995 LBS**
 HITCH WEIGHT: **2,718 LBS**

BATH & 1/2



MODEL: **320A**
 EXTERIOR LENGTH: **39'8"**
 SHIP WEIGHT: **11,939 LBS**
 HITCH WEIGHT: **2,398 LBS**

KING BED



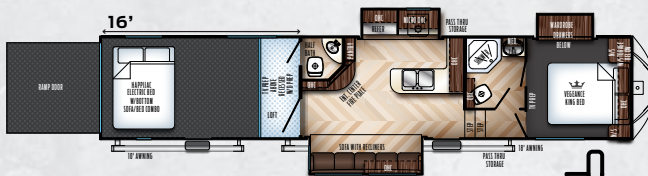
MODEL: **377V**
 EXTERIOR LENGTH: **42'4"**
 SHIP WEIGHT: **13,275 LBS**
 HITCH WEIGHT: **2,646 LBS**

BATH & 1/2



MODEL: **420V12**
 EXTERIOR LENGTH: **42'8"**
 SHIP WEIGHT: **13,362 LBS**
 HITCH WEIGHT: **2,888 LBS**

MASTER SUITE



MODEL: **388V16**
 EXTERIOR LENGTH: **TBA**
 SHIP WEIGHT: **TBA**
 HITCH WEIGHT: **TBA**

BATH & 1/2



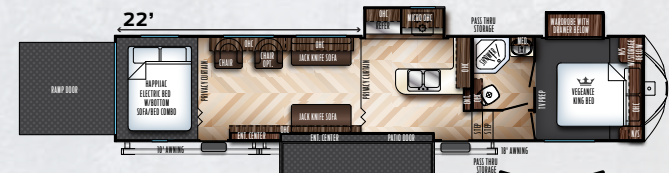
MODEL: **422V12-6**
 EXTERIOR LENGTH: **43'2"**
 SHIP WEIGHT: **13,409 LBS**
 HITCH WEIGHT: **2,972 LBS**

TWO BATH



MODEL: **394V13**
 EXTERIOR LENGTH: **41'8"**
 SHIP WEIGHT: **13,195 LBS**
 HITCH WEIGHT: **2,994 LBS**

KING BED



MODEL: **424V22**
 EXTERIOR LENGTH: **42'6"**
 SHIP WEIGHT: **13,155 LBS**
 HITCH WEIGHT: **3,174 LBS**

SIDE PATIO

VENGEANCE FIFTH WHEEL STANDARDS & OPTIONS

EXTERIOR FEATURES

102" Wide Body
Wide Set I-Beams on Chassis
Aluminum Framed Vacuum Bonded Side Walls
Aerodynamic Painted Fiberglass Front Cap
LED Accent Lighting on Cap
Laminated Bed/Bath Floor
Enclosed Underbelly
Insulated Underbelly
Block Foam Insulated Side Walls
Power Awnings w/LED Lighting
Exclusive Vengeance Blue Awning Arms
90 Amp Converter
50 Amp Service
Sony Marine Grade Exterior Speakers
30 Gallon Fuel Pumping Station
Generator Prep
Electric Front Landing Gear (Double Axle Models)
Hydraulic Front Landing Gear (Triple Axle Models)
8' Ramp Door
Ramp Patio Prep
LED Rear Loading Lights
Hydraulic Slide Outs in Living Room (N/A 312A)
Extra Large Entry Grab Handle
LED Exterior Lighting
PVC (poly vinyl chloride) Roof Material
ABS Fender Skirts
7,000lb. Axles
Equa Flex Suspension
Aluminum Rims
Triple Step Entry Steps
LED Brake Lights
Two (2) 30lb. LP Bottles
Outside Shower with Hot and Cold
Black Tank Flush
Ram Air Garage Ventilation
100% Exterior LED Lighting

15,000 BTU Ducted A/C
2nd A/C Prep
6 Gallon Gas/Electric DSI Water Heater
Walk-on Crowned Roof
Gutters with Extended Drip Spouts
Back Up Camera Ready
Outside Outlet and Cable Prep
Spare Tire

INTERIOR FEATURES

Upgraded Seamless Counter Tops
Under Mounted Stainless Steel Sink
Sink Cover
Pull Down Faucet
Stainless Steel Residential Refrigerator
1,000 Watt Inverter
Flush Mount 3 Burner Stove with Glass Top
Ultra Durable Lino Flooring
100% LED Interior Lighting
LED Accent Lighting
Booth Dinette w/ Storage (Select Floor Plans)
Stainless Steel Convection Oven/Microwave Combo
Fluted Glass Fronts on Kitchen Cabinets
Decorative Kitchen and Wall Sconce Lighting
Reclining Theater Seats w/Heat Feature
Residential Wood Blinds
Upgraded Window Treatments
Slide Out Storage Cabinets
Composite Interior Steps
Bluetooth Stereo
Large Flat Screen TV
Cable Prep in Lofts
Removable Steel Loft Ladder
Oversized Vapor Barrier Doors into Garage (Select Floor Plans)
5,000lb. Tie Downs Secured to Chassis
Blackout Snap On Window Covers in Garage
Washer/Dryer Prep (Triple Axle Models Only)

12" Diamond Plate Base Board
Tuff Ply Cargo Flooring
Interior Speakers
HDMI Wall Plates for Device Connection
Overstuffed Sofas with Free Standing Table
Beaver Tail Transition
Backlit Light Switches
35,000 BTU Furnace
Power Vent in Living Room
Roll Down Screen Wall/Tent Wall
His and Hers Nightstands with Sconce Lighting
Nightstand Outlets and USB Charging Centers
Nightstand Storage Cabinet
Bedroom Cabinets Above Bed
Bedroom TV/Cable Prep
Large Mirrored Bedroom Wardrobe (Select Floor Plans)
Six Sets of Dresser Drawers (Select Floor Plans)
Under Bed Storage
Dual Entry into the Bathroom
Shower with Surround and Glass Enclosure
Adjustable and Removable Shower Head
Large Skylight
Power Vent in Bathroom
Mirrored Medicine Cabinet
12 Volt Master Shut Off
Foot Flush Toilet
Vengeance King Bed (Select Floor Plans)

PLATINUM PACKAGE

(not all items available on all models)
100% LED Lighting with Accents
7,000# Axles with 8 Lug Wheels
Back Up Camera Ready
Bluetooth Stereo
Dual 30# LP Tank Upgrade
Equa Flex Suspension
Extra Tall Slide Rooms

Gen Prep w/Transfer Switch
Heated Reclining Theatre Seating
Hydraulic Front Landing Gear (3 axle Models Only)
Laminated Bed Deck
Laminated Sidewalls
Laminated Slide Out End Walls and Roof
LED Lighted Awning
LED Rear Loading Lights
Multiple USB Charging Ports
Screen Wall / Tent Wall
Seamless Countertops
Sink Cover
Solar Prep and Wiring
Upgraded Baggage Doors
Upgraded Garage Floor with 5,000# Tie Downs
Upgraded Hinged Happijac System w/ Fold Down Cup Holders
Upgraded Stainless Steel Refer w/ Inverter
Upscaling Residential DVD Player
Wide Spread Chassis

OPTIONS

2nd A/C
G Rated Tires (2 Axle)
G Rated Tires (3 Axle)
5.5 Onan Generator
8 Cubic Foot RV Refrigerator w/Raised Panel Front IPO Residential w/ Inverter
Alumifoil Insulation
Euro Recliner Black Leather
Fifth Wheel Electric Stabilizer Jacks(Rear)
Ramp Door Patio System
Ramp Patio Step w/Handrail
Roof Ladder
Ultracold Heated Holding Tank Pads
6 Point Hydraulic Leveling(2 axle) (N/A on F312A)
6 Point Hydraulic Leveling(3 axle)



VENGEANCE TRAVEL TRAILERS

INNOVATION WITHOUT LIMITATIONS

**VENGEANCE TRAVEL TRAILERS FOCUS ON
BEING WEIGHT CONSCIOUS WHILE OFFERING
MAXIMUM UTILITY.**



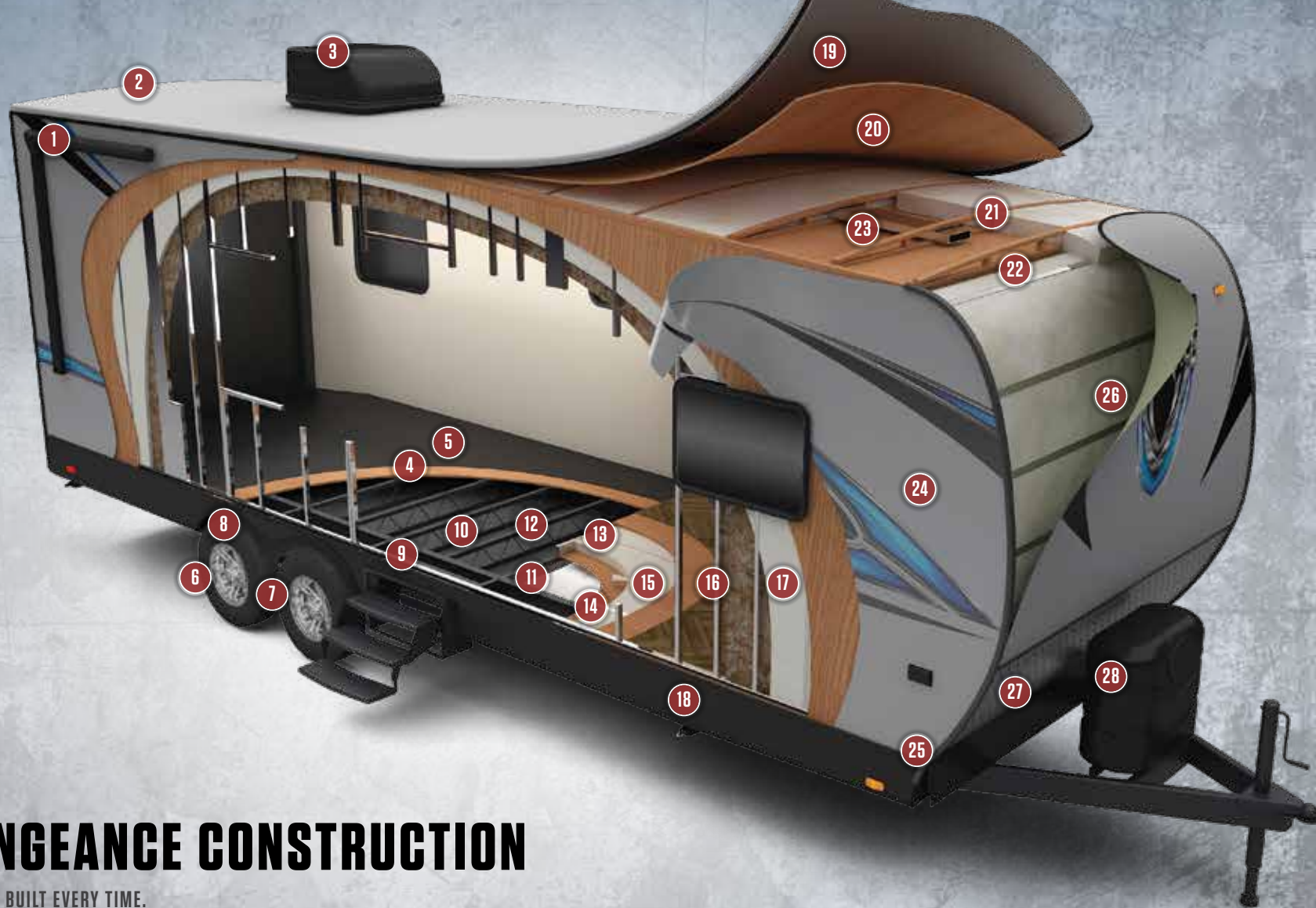


26FB13
GARAGE



26FB13
BEDROOM

FLOORPLANS THAT FIT YOUR NEEDS
+
FEATURES THAT YOU WANT
=
VALUE THAT CAN'T BE BEAT.



VENGEANCE CONSTRUCTION

QUALITY BUILT EVERY TIME.

- 1 Power awning w/ LED strip lighting
- 2 Full walk-on roof
- 3 13,500 BTU A/C
- 4 1" garage floor decking w/3,000 lb cargo capacity
- 5 Tuff ply cargo flooring in garage
- 6 5,200 lb. Axles
- 7 Equa Flex Suspension

- 8 Radial Tires
- 9 True wide I-Beam chassis
- 10 Fluted polypropylene enclosed underbelly
- 11 Baton insulation layer
- 12 Polyethylene subfloor wrap
- 13 Floor decking
- 14 2.5" Aluminum framed laminated bed/bath floor

- 15 Block foam floor insulation
- 16 2" Welded aluminum wall studs
- 17 Block foam wall insulation
- 18 Stabilizer jacks
- 19 One piece PVC roof material
- 20 3/8" Roof decking
- 21 Baton insulation layer

- 22 5" Bowed wood truss rafters
- 23 Aluminum A/C Ducting
- 24 Vacuum bonded fiberglass side walls
- 25 102" Wide body
- 26 Aluminum framed front radius construction
- 27 Diamond plate rock guard
- 28 LP Bottle Cover



MODEL: **23FB13**
 EXTERIOR LENGTH: **28'6"**
 SHIP WEIGHT: **5,526 LBS**
 HITCH WEIGHT: **876 LBS**

1/2 TON TOWABLE



MODEL: **26FB13**
 EXTERIOR LENGTH: **32'**
 SHIP WEIGHT: **TBA**
 HITCH WEIGHT: **TBA**

QUEEN BED

VENGEANCE TRAVEL TRAILER STANDARDS & OPTIONS

EXTERIOR FEATURES

- 102" Wide Body
- Aluminum Framed Vacuum Bonded Side Walls
- 1" Cargo and Tuff Ply Floor
- Lightweight Laminated Bed/Bath Floor
- Enclosed Underbelly
- Insulated Underbelly
- Block Foam Insulated Side Walls
- Power Awning w/LED Lighting
- Chassis Prep for Fuel Station and Generator
- Marine Grade Exterior Speakers
- 7' Ramp Door
- Ramp Patio Prep
- Extra Large Entry Grab Handle
- LED Exterior Lighting
- PVC (poly vinyl chloride) Roof Material
- ABS Fender Skirts
- 5,200lb. Axles
- Aluminum Rims
- Triple Step Entry Steps
- LED Brake Lights
- Two (2) 20lb. LP Bottles
- ABS Easy Access LP Bottle Cover
- Outside Shower with Hot and Cold
- Black Tank Flush
- Aerodynamic Radius Front Design

- Aluminum Framed Front Profile Construction
- Diamond Plate Rock Guard on Front
- 13,500 BTU Ducted A/C
- 6 Gallon Gas/Electric DSI Water Heater
- Walk-on Crowned Roof
- Gutters with Extended Drip Spouts
- Back Up Camera Ready
- Outside Power Outlet
- Spare Tire

INTERIOR FEATURES

- Upgraded Seamless Counter Tops
- Under Mounted Stainless Steel Sink
- Pull Down Faucet
- 8 Cu. Ft. Gas/Electric Refrigerator
- Flush Mount 3 Burner Stove with Glass Top
- 100% LED Interior Lighting
- Ultra Durable Lino Flooring
- 22" Oven
- Microwave
- Bluetooth Stereo
- Large Flat Screen TV
- Cable and Satellite Prep
- 5,000lb. Tie Downs Secured to Chassis
- Blackout Snap On Window Covers in Garage
- 12" Diamond Plate Base Board

- Tuff Ply Cargo Flooring
- Interior Speakers
- HDMI Wall Plates for Device Connection
- Overstuffed Sofas with Free Standing Table
- Beaver Tail Transition
- Residential Wood Blinds
- 12 Volt Master Shut Off
- Backlit Light Switches
- 35,000 BTU Furnace
- Power Vent in Living Room
- Roll Down Screen Wall/Tent Wall
- Bedroom TV Prep
- Bedroom Hanging Storage
- Bedroom Drawer Storage
- Under Bed Storage
- Shower with Surround and Curtain
- Adjustable and Removable Shower Head
- Large Skylight
- Foot Flush Toilet
- Power Vent in Bathroom
- Mirrored Medicine Cabinet
- GFI Outlet

PLATINUM PACKAGE

(not all items available on all models)

- Back Up Camera Ready
- Generator Ready & Fuel Station

- Happijac Bed Lift- Top Bed w/Bottom Bed
- Couch Combo IPO Steel Roll Over Sofas Only
- Indoor/Outdoor Cargo Carpet
- LED Lighted Awning
- Multiple USB Charging Ports
- Ramp Patio Prep
- Rear Roll Down Screen
- Swing Arm TV Bracket
- Upgraded Blue Tooth Stereo
- Upgraded Recessed Stove Top w/Glass Cover
- Wood Panel Refrigerator Insert

OPTIONS

- 4.0 Generator
- 15,000 BTU A/C
- Ramp Door Patio System
- Upgraded Pull Down Screen Wall
- Power Tongue Jack w/Shroud
- Electric Stabilizer Jacks
- Alumifoil Insulation
- Ultracold Heated Holding Tank Pads
- Euro Recliner Black Leather
- Swivel Rocker Chair

VENGEANCE FIFTH WHEEL AND TRAVEL TRAILER SPECIFICATIONS

FIFTH WHEELS

TRAVEL TRAILERS

	312A	320A	348A13	377V	388V16	394V13	420V12	422V12-6	424V12	23FB13	26FB13
Dry Hitch Weight	2001-lbs.	2398-lbs.	2718-lbs.	2646-lbs.	TBA	2994-lbs.	2888-lbs.	2972-lbs.	3174-lbs.	876-lbs	TBA-lbs
Unloaded Vehicle Weight	10666-lbs.	11939-lbs.	11995-lbs.	13275-lbs.	TBA	13195-lbs.	13362-lbs.	13409-lbs.	13155-lbs.	5526-lbs	TBA-lbs
Axle Weight	8606-lbs.	9482-lbs.	9218-lbs.	10570-lbs.	TBA	10169-lbs.	10415-lbs.	10378-lbs.	9922-lbs.	4612-lbs	TBA-lbs
GVWR w/Brakes	16000-lbs.	16000-lbs.	16398-lbs.	18000-lbs.	TBA	17100-lbs.	18000-lbs.	18000-lbs.	18000-lbs.	9525-lbs	TBA-lbs
Cargo Carrying Capacity	5334-lbs.	4061-lbs.	4403-lbs.	4725-lbs.	TBA	3905-lbs.	4638-lbs.	4591-lbs.	4845-lbs.	3999-lbs	3999-lbs
Exterior Length	38'-9"	39'-8"	40'-10"	42'-4"	TBA	41'-8"	42'-8"	43'-2"	42'-6"	28'-6"	32'-0"
Exterior Height w/ AC	13'-4"	13'-4"	13'-4"	13'-4"	TBA	13'-4"	13'-4"	13'-4"	13'-4"	11' 7"	11' 7"
Exterior Width	102"	102"	102"	102"	TBA	102"	102"	102"	102"	102"	102"
Grey Capacity	42-Gal.	50-Gal.	80-Gal.	80-Gal.	TBA	80-Gal.	100-Gal.	100-Gal.	100-Gal.	32-gal	64-gal
Black Capacity	42-Gal.	50-Gal.	80-Gal.	80-Gal.	TBA	50-Gal.	100-Gal.	100-Gal.	50-Gal.	32-gal	32-gal
Fresh Capacity	100-Gal.	100-Gal.	100-gal	100-gal	TBA	100-gal	100-gal	100-gal	100-gal	53-gal	53-gal
Awning Size	21'	21'	21'	21'	TBA	21'	18' & 10'	18' & 10'	18' & 10'	15'	18'
Cargo Area Size-Off DS	144"	146"	156"	144"	TBA	156"	144"	144"	144"	70"	72"
Cargo Area Size-DS	144"	146"	156"	144"	TBA	156"	144"	144"	144"	166"	162"



PRE-DELIVERY INSPECTION FACILITY

20,000 square feet of quality assurance. The bare essentials for a premium product. This state-of-the-art facility gives immediate daily feedback to production for quality assurance in every unit built.

Specification Definitions

GVWR (Gross Vehicle Weight Rating) - is the maximum permissible weight of the unit when fully loaded. It includes all weights, inclusive of all fluids, cargo, optional equipment and accessories. For safety and product performance do NOT exceed the GVWR.

GAWR (Gross Axle Weight Rating) - is the maximum permissible weight, including cargo, fluids, optional equipment and accessories that can be safely supported by a combination of all axles.

UVW (Unloaded Vehicle Weight)* - is the typical weight of the unit as manufactured at the factory. It includes all weight at the unit's axle(s) and tongue or pin and LP Gas. The UVW does not include cargo, fresh potable water, additional optional equipment or dealer installed accessories.

*Estimated average based on standard build optional equipment.

CCC (Cargo Carrying Capacity)** - is the amount of weight available for fresh potable water, cargo, additional optional equipment and accessories. CCC is equal to GVWR minus UVW. Available CCC should accommodate fresh potable water (8.3 lbs

per gallon). Before filling the fresh water tank, empty the black and gray tanks to provide for more cargo capacity.

** Estimated average based on standard build optional equipment

Each Forest River RV is weighed at the manufacturing facility prior to shipping. A label identifying the unloaded vehicle weight of the actual unit and the cargo carrying capacity is applied to every Forest River RV prior to leaving our facilities.

The load capacity of your unit is designated by weight, not by volume, so you cannot necessarily use all available space when loading your unit.

24/7 EMERGENCY ROADSIDE ASSISTANCE

For a worry-free ownership experience Forest River includes one year of Coach-Net RV Technical & Roadside Assistance with each RV purchase. Whether new to the RV lifestyle or an experienced RV enthusiast, Forest River owners have 24/7 access to technical, operational and emergency road service coverage throughout the US & Canada. Coach-Net's fast, dependable service is just a phone call away.

Coach-Net®

RV Technical & Roadside Assistance



Learn More

Scan this barcode using a QR Reader on your smart phone to learn more about Forest River.



A Berkshire Hathaway company.

CUSTOMER SATISFACTION



www.ForestRiverBuyLocal.com

ADDRESS GOES HERE.

YOUR VENGEANCE DEALER

All information contained in this brochure is believed to be accurate at the time of publication. However, during the model year, it may be necessary to make revisions and Forest River, Inc. reserves the right to make all such changes without notice, including prices, colors, materials, equipment and specifications as well as the addition of new models and the discontinuance of models shown in this brochure. Therefore, please consult with your Forest River, Inc., dealer and confirm the existence of any materials, design or specifications that are material to your purchase decision. Litho. U.S.A. P / W: 2016.12.16