



**Dutchmen**<sup>®</sup>

*Legendary Innovation. Trailblazing Value.*

TRAVEL TRAILERS AND EXPANDABLES

# KODIAK



**LIGHT ON WEIGHT, HEAVY ON FEATURES**



YES, IT HAS  
**THAT!**

As the leader in ultra light technology, Kodiak offers an innovative, aerodynamic profile for easier towing and better fuel economy. But just because you can tow a Kodiak with an SUV, crossover, minivan or light truck, doesn't mean you'll be lacking amenities. Every Kodiak we build is packed full of modern interiors, features and conveniences to improve your camping experience.

# KODIAK ULTIMATE



**LIGHT** | **HEAVY**  
ON WEIGHT | ON FEATURES

KODIAK ULTIMATE



KODIAK ULTIMATE 330BHSL | GRAPHITE



KODIAK ULTIMATE KITCHEN STORAGE



AUTOMATIC LEVEL-UP



KODIAK ULTIMATE 330BHSL BUNKHOUSE

## IDEAL KITCHEN

Our feature-rich kitchen offers all the conveniences of home. Modern island, stainless-steel appliances, high-power microwave, expansive solid-surface countertops with LED lights, high-rise faucet with convenient sprayer and so much more!

## IN-COMMAND

Control virtually anything with a motor or a switch with the proven iN-Command technology, using your smart phone, tablet, or the control commander mounted on the wall.



iN-COMMAND SYSTEM

# KODIAK

ULTRA LITE



## CONVENIENCE COUNTS



KODIAK ULTRA-LITE 243BHSL | BROWNSTONE

## PICTURE-PERFECT AMENITIES

Connecting you to the outdoors through larger-window views.

- ▶ Enjoy the outdoors even more with the largest windows offered in the travel trailer market.
- ▶ Tinted safety-glass windows and night shades give you options, day or night.
- ▶ The handy microwave, three-burner cooktop with oven, range hood and fan light offer everything you need for whipping up meals.
- ▶ Sunlight is maximized with skylights in all bathrooms and kitchens.
- ▶ A large folding grab handle, black tank flush and exterior spray ports provide the utmost convenience in Kodiak Ultra-Lite.

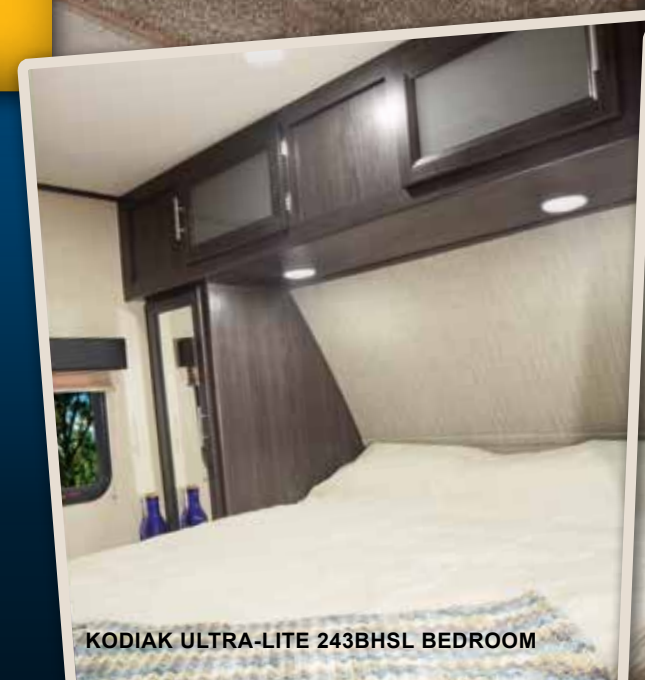


### QUALITY APPLIANCES

Stainless-steel appliances provide the ultimate in form and function.

### BEAR CAVE STORAGE

We maximized the Kodiak's storage area and made it 40% larger than the competition. More space means even more room to bring it all!



KODIAK ULTRA-LITE 243BHSL BEDROOM



KODIAK ULTRA-LITE 243BHSL



KODIAK ULTRA-LITE 243BHSL



### LED POWER AWNING

Our LED power awning provides maximum lighting during camping stays.



KODIAK ULTRA-LITE EXPANDABLE 186E | IRONGATE

# EXPANDING YOUR OPTIONS

Kodiak Ultra-Lite offers the best in maximized modern living space. Combine all the conveniences, styles and craftsmanship of the conventional lightweight Kodiak with handy expandable sleeping spaces, and you've just broadened your camping options.



KODIAK ULTRA-LITE EXPANDABLE 186E

# BROADENING YOUR HORIZONS

## DURABLE TENT CONSTRUCTION

With a 7-year tent warranty, our mold resistant, double-stitched AquaShield Aqualon material doesn't stretch, shrink or crack, giving you long-lasting durability in any weather condition.



## DINING VERSATILITY

With our oversized dinettes and expansive seating areas, you can enjoy more meals around more family.

## SWEET DREAMS

There's room for everyone with multiple guest-friendly sleeping options. From our spacious tent beds to the optional tri-fold sofa bed, Kodiak Ultra-Lite offers everything you need for a good night's rest.

## RESIDENTIAL CABINETRY

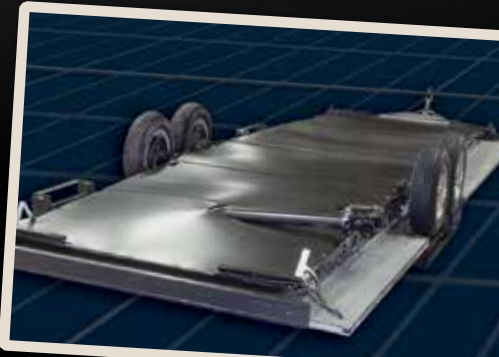
Kodiak Ultra-Lite's deep storage drawers with steel roller-ball bearing guides and dedicated pots and pans storage are all encased in beautiful maple-cherry glazed cabinets.

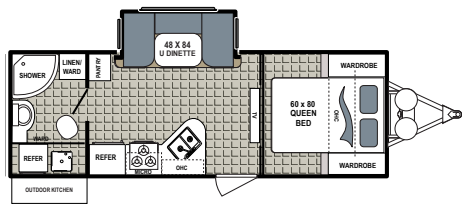
## STORAGE GALORE

Our huge pantry and oversized wardrobe enable you to bring the things you need for an extended stay on the road.

## ENCLOSED & HEATED UNDERBELLY

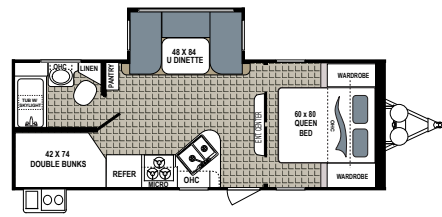
Our fully enclosed and heated underbelly protects your investment from the elements, road debris and rodents.





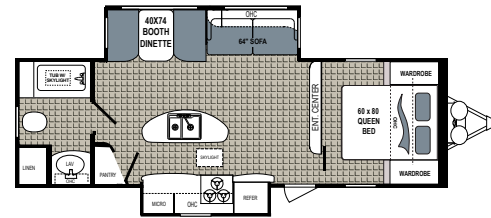
**KODIAK | 230RBSL**

Ext. Length: 27' 1" Ext. Height: 10' 9"  
Average Shipping Weight: 5,180 Sleeps: 4-6



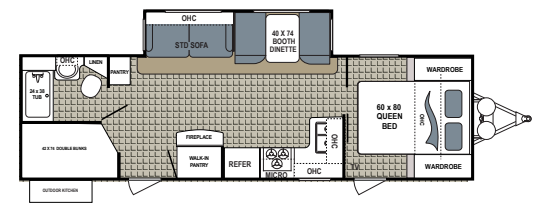
**KODIAK | 240BHSL**

Ext. Length: 27' 6" Ext. Height: 11'  
Average Shipping Weight: 5,210 Sleeps: 4-6



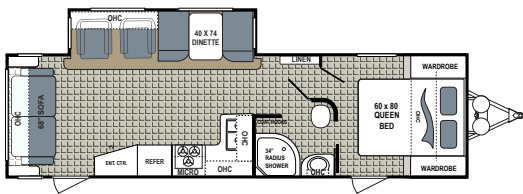
**KODIAK | 279RBSL**

Ext. Length: 30' 8" Ext. Height: 10' 10"  
Average Shipping Weight: 6,459 Sleeps: 3-5



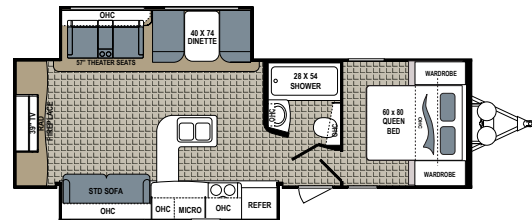
**KODIAK | 288BHSL**

Ext. Length: 32' 5" Ext. Height: 10' 10"  
Average Shipping Weight: 6,329 Sleeps: 3-5



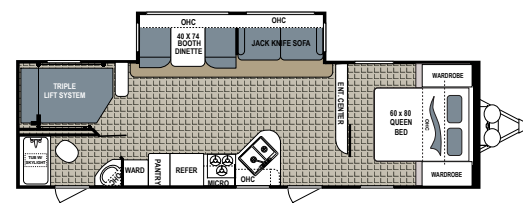
**KODIAK | 290RLSL**

Ext. Length: 33' 7" Ext. Height: 11' 2"  
Average Shipping Weight: 6,199 Sleeps: 4-6



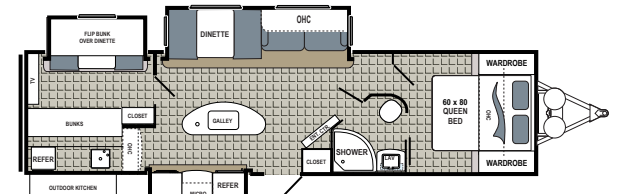
**KODIAK | 291RESL**

Ext. Length: 32' 10" Ext. Height: 11' 2"  
Average Shipping Weight: 6,877 Sleeps: 4-6



**KODIAK | 295TBHS**

Ext. Length: 33' 3" Ext. Height: 10' 10"  
Average Shipping Weight: 6,313 Sleeps: 7-8



**KODIAK | 330BHSL**

Ext. Length: 37' 3" Ext. Height: 11' 2"  
Average Shipping Weight: 7,630 Sleeps: 8-9

**ROOF**

- ▶ Dutchmen uses a fully walkable, 5" thick truss-style, high-strength aluminum-frame roof.
- ▶ The fully welded aluminum tubular framed roof offers strength and sustainability for lasting appeal.
- ▶ The TPO roof system ensures exceptional resistance to ultraviolet, ozone and chemical exposure, backed by a 12-year manufacturer's warranty.
- ▶ High-density structural foam provides superior structural strength and reduces weight for easier towing.

**WALL**

- ▶ High-gloss fiberglass exteriors provide long-lasting appeal.
- ▶ Welded aluminum tubular framed walls give Kodiak a lightweight, durable structure.
- ▶ High-density structural foam insulation provides superior insulation and reduces weight for easier towing.
- ▶ Constructed of durable, high-impact ABS plastic, your fender skirts curve underneath your Kodiak for ultimate protection.
- ▶ Designed to be towed by light trucks and sports utility vehicles, Kodiak's aerodynamic profile pushes air up the front wall and over the roof, improving towing ease and fuel economy.

**FLOOR**

- ▶ Dutchmen's resilient flooring surface is backed with a 7-year warranty to ensure durability and your satisfaction for the long haul.
- ▶ We include high-density structural foam for improved performance.
- ▶ Each Kodiak's PolyPly waterproof vapor barrier floor surface has passed a three-cycle and 24-hour soak test for leak-proof reliability.

**CHASSIS**

- ▶ Every Kodiak Ultimate model is built on an 8" I-beam chassis, the largest in its class.
- ▶ We boast the strongest frame found in a travel trailer with fully extended and welded outriggers for added support and durability.

**DUTCHMEN CONSTRUCTION**



**KODIAK ULTIMATE STANDARDS AND OPTIONS**

**MANDATORY OPTIONS**

- Ultimate Package
- Solid Surface Counter Tops with LED backlighting
- Radial Tires
- 15" Aluminum Rims
- Stainless Steel Appliances
- Heated and Enclosed Underbelly
- Power Tongue Jack with Docking Light
- 32" LED Flat Screen TV
- 39" LED Flat Screen TV (291 Only)
- Interior LED Lights
- Tri Fold Sleeper Sofa (Select Models Only)
- 2nd A/C Prep w/50 AMP Service (Select Models Only)
- 60x80 Queen Bed
- Winterization

**EXTERIOR OPTIONS**

- 15k BTU A/C IPO 13.5k BTU
- Swing Out Coleman Bumper Grill

- State Seal
- CSA Construction & Seal
- Winterization
- 50 AMP Service with 2nd A/C Prep
- 2nd A/C Non Ducted in Bedroom

**INTERIOR OPTIONS**

- Freestanding Dinette IPO Booth (279, 291, 288, 290)
- Theater Seats IPO Chairs (291 & 290)

**ULTIMATE PACKAGE**

- Bear Cage Construction
- Fully Laminated Exterior
- Diamond Plate Front Rock Guard
- Easy Lube Axles
- Large Folding Grab Handle
- Spare Tire, Carrier & Cover
- Front & Rear Stab Jacks
- Adjustable Power Awning w/LED Lights

- Outside Speakers
- Exterior Spray Port
- 13,500 BTU Ducted A/C
- 20 lb LP Bottles w/Cover
- TV Antenna
- Slam Latch Baggage Doors
- Bear Cave Storage with Oversized Baggage Doors
- Porcelain Toilet
- Night Shades Throughout
- Medicine Cabinet w/Mirror
- 6 Gallon Gas/Electric DSI Water Heater
- Tub Surround
- Kitchen & Bath Skylight
- 12V Bath Exhaust Fan
- High Rise Pull-Out Faucet
- Oversized Farm-style Single Bowl Sink
- 6 Cubic Foot Double Door Refer
- Three Burner Range Top w/Oven
- Range Hood with 12V Fan/Light
- Microwave

- Sink Cover
- AM/FM/CD/DVD Stereo w/Bluetooth
- Cable TV Hookup w/Booster
- Bedroom TV Hookup w/Backer
- High Output Furnace
- Exterior TV Mount
- Central Control Station
- Oversized Dinette Windows
- Smoke, LP Leak, & Carbon Monoxide Detectors
- Bear Cage Construction
- Fire Extinguisher

**MODERN LUXURY PACKAGE**

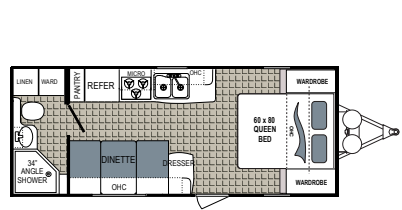
- Gel Coat High Gloss Fiberglass
- Painted Front Fiberglass Cap
- Hybrid Aluminum Entry Steps
- iN-Command 1.05 with Touch Screen
- Automatic Leveling System

**KODIAK ULTIMATE SPECIFICATIONS**

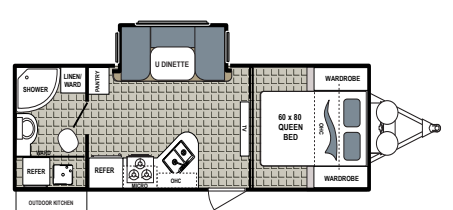
FLOORPLAN	DIMENSIONS			WEIGHTS (LBS.)			TANKS (GALS.)		
	TRAVEL LENGTH	EXTERIOR WIDTH	EXTERIOR HEIGHT (WITH A/C)	**AVERAGE SHIPPING WEIGHT	DRY HITCH WEIGHT	CARGO CARRYING CAPACITY	WATER CAPACITY	WATER CAPACITY	BLACK WATER CAPACITY
230RBSL	27' 1"	96"	10' 9"	5,180	661	2,420	52	39	28
240BHSL	27' 6"	96"	11'	5,210	608	1,390	52	39	28
279RBSL	30' 8"	96"	10' 10"	6,459	841	1,141	52	67	28
288BHSL	32' 5"	96"	10' 10"	6,329	643	1,271	52	39	28
290RLSL	33' 7"	96"	11' 2"	6,199	891	1,401	52	39	28
291RESL	32' 10"	96"	11' 2"	6,877	883	2,023	52	56	28
295TBHS	33' 3"	96"	10' 10"	6,313	760	1,287	52	39	28
330BHSL	37' 3"	96"	11' 2"	7,630	979	2,050	52	78	28

\*Length is defined as the distance from the centerline of hitch pin/coupler to rear bumper of trailer. \*\*Our weights represent how most units are built, inclusive of many commonly-ordered options. \*\*\*Fresh water capacity includes water heater capacity.

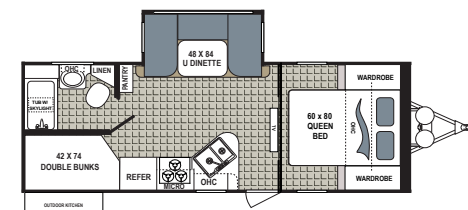
**DISCLAIMER:** Product information is as accurate as possible as of the date of brochure publication. All features, floorplans and specifications in this brochure are subject to change without notice. Please consult Dutchmen's website at www.Dutchmen.com for current product information and specifications. **Tow Vehicle Disclaimer. CAUTION:** Owners of Dutchmen recreational vehicles are solely responsible for the selection and proper use of tow vehicles. All customers should consult with a motor vehicle manufacturer or their dealer concerning the purchase and use of suitable tow vehicles for Dutchmen products. Dutchmen disclaims any liability or damages suffered as a result of the selection, operation, use or misuse of a tow vehicle. DUTCHMEN'S LIMITED WARRANTY DOES NOT COVER DAMAGE TO THE RECREATIONAL VEHICLE OR THE TOW VEHICLE AS A RESULT OF THE SELECTION, OPERATION, USE OR MISUSE OF THE TOW VEHICLE. REFERENCE DUTCHMEN MANUFACTURING OWNERS MANUAL FOR LIMITED WARRANTY DETAILS.



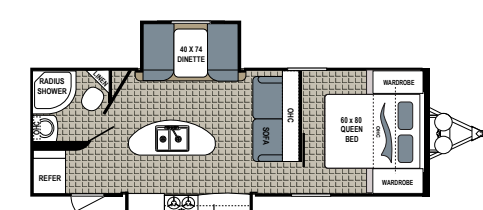
**KODIAK ULTRA-LITE | 201QB**  
Ext. Length: 24' 2" Ext. Height: 10' 3"  
Average Shipping Weight: 3,849 Sleeps: 2-4



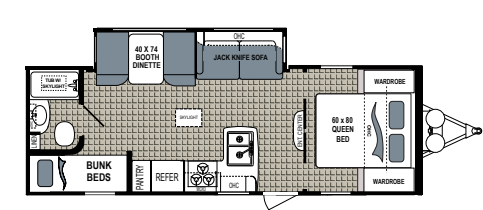
**KODIAK ULTRA-LITE | 233RBSL**  
Ext. Length: 27' 1" Ext. Height: 10' 8"  
Average Shipping Weight: 4,891 Sleeps: 2-4



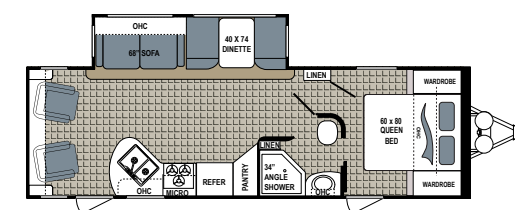
**KODIAK ULTRA-LITE | 243BHSL**  
Ext. Length: 27' 6" Ext. Height: 10' 9"  
Average Shipping Weight: 4,939 Sleeps: 2-4



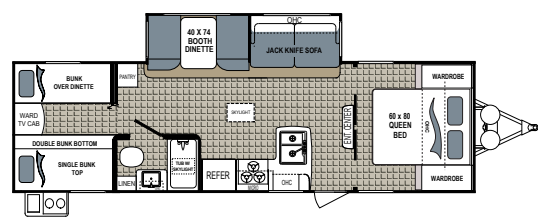
**KODIAK ULTRA-LITE | 253RBSL**  
Ext. Length: 29' 1" Ext. Height: 10' 9"  
Average Shipping Weight: 5,325 Sleeps: 2-4



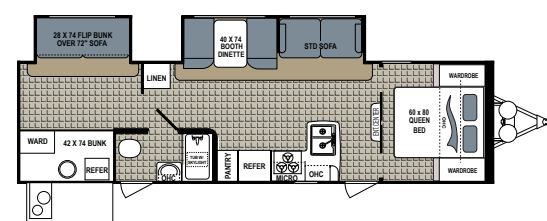
**KODIAK ULTRA-LITE | 255BHSL**  
Ext. Length: 28' 9" Ext. Height: 10' 7"  
Average Shipping Weight: 5,091 Sleeps: 4-6



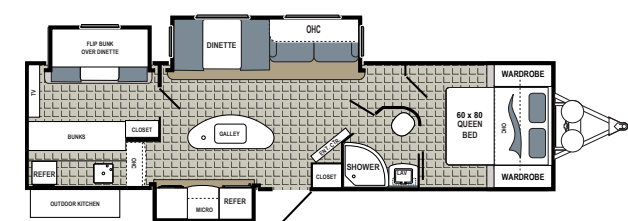
**KODIAK ULTRA-LITE | 264RLSL**  
Ext. Length: 31' 2" Ext. Height: 10' 7"  
Average Shipping Weight: 5,681 Sleeps: 2-4



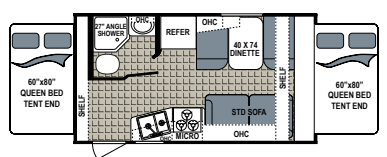
**KODIAK ULTRA-LITE | 283BHSL**  
Ext. Length: 32' 11" Ext. Height: 10' 7"  
Average Shipping Weight: 5,579 Sleeps: 6-8



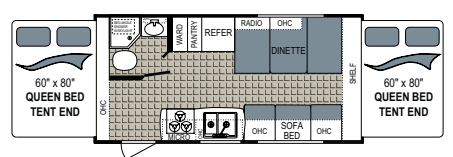
**KODIAK ULTRA-LITE | 299BHSL**  
Ext. Length: 35' 2" Ext. Height: 10' 9"  
Average Shipping Weight: 6,624 Sleeps: 6-8



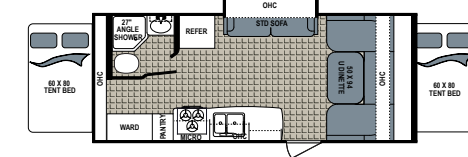
**KODIAK ULTRA-LITE | 331BHSL**  
Ext. Length: 37' 3" Ext. Height: TBD  
Average Shipping Weight: TBD Sleeps: 8-10



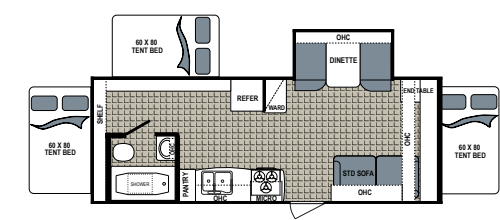
**KODIAK EXPANDABLE | 172E**  
Ext. Length: 18' 6" Ext. Height: 10'  
Average Shipping Weight: 3,161 Sleeps: 4-6



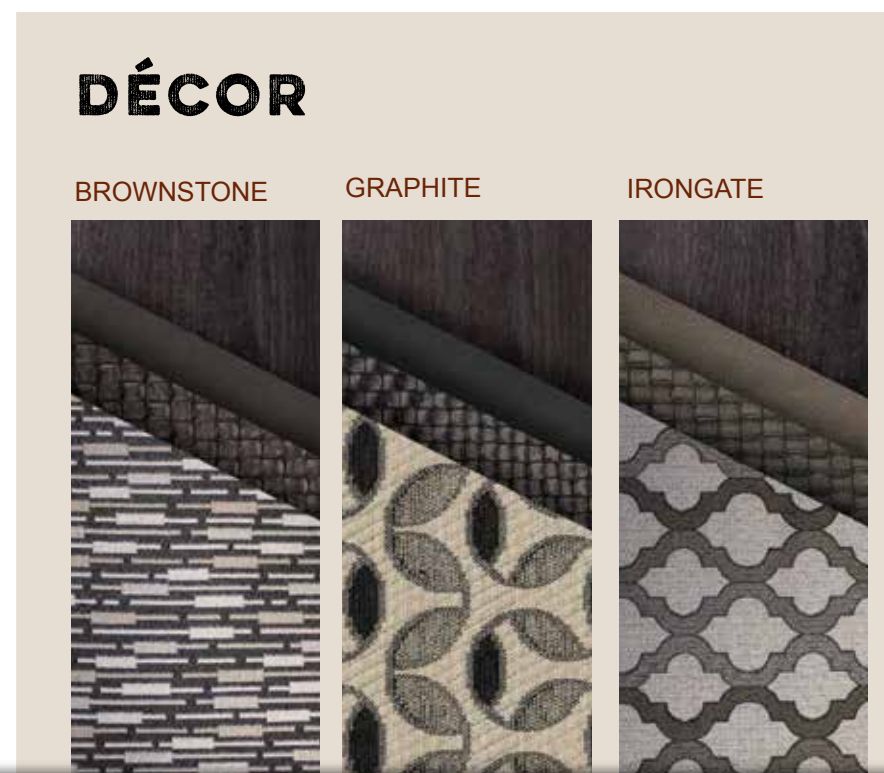
**KODIAK EXPANDABLE | 186E**  
Ext. Length: 20' 9" Ext. Height: 10'  
Average Shipping Weight: 3,567 Sleeps: 4-6



**KODIAK EXPANDABLE | 206ES**  
Ext. Length: 24' 10" Ext. Height: 10' 1"  
Average Shipping Weight: 4,225 Sleeps: 4-6



**KODIAK EXPANDABLE | 222ES**  
Ext. Length: 26' 3" Ext. Height: 9' 11"  
Average Shipping Weight: 4,575 Sleeps: 6-8



**KODIAK ULTRA-LITE SPECIFICATIONS**

DIMENSIONS		WEIGHTS (LBS.)		TANKS (GALS.)						
MODEL	FLOORPLAN	*EXTERIOR TRAVEL LENGTH	EXTERIOR WIDTH	EXTERIOR HEIGHT (WITH A/C)	**AVERAGE SHIPPING WEIGHT	DRY HITCH WEIGHT	CARGO CARRYING CAPACITY	***FRESH WATER CAPACITY	GREY WATER CAPACITY	BLACK WATER CAPACITY
KODIAK Ultra-Lite	201QB	24' 2"	96"	10' 3"	3,849	385	1,551	52	39	28
	233RBSL	27' 1"	96"	10' 8"	4,891	621	2,709	52	39	28
	243BHSL	27' 6"	96"	10' 9"	4,939	505	1,661	52	39	28
	253RBSL	29' 1"	96"	10' 9"	5,325	586	1,275	52	39	28
	255BHSL	28' 9"	96"	10' 7"	5,091	560	1,509	52	39	28
	264RLSL	31' 2"	96"	10' 7"	5,681	681	1,919	52	39	28
	283BHSL	32' 11"	96"	10' 7"	5,579	754	2,021	52	39	28
EXPANDABLES	172E	18' 10"	96"	10'	3,161	320	689	52	39	28
	186E	20' 9"	96"	10'	3,567	357	1,433	52	39	28
	206ES	24' 10"	96"	10' 1"	4,225	559	2,327	52	39	28
	222ES	26' 3"	96"	9' 11"	4,575	614	2,0925	52	39	28

**KODIAK ULTRA-LITE STANDARDS AND OPTIONS**

- MANDATORY OPTIONS**
  - 60x80 Queen Bed
  - Express Package
  - Radial Tires
  - Stainless Steel Appliances
  - Enclosed Underbelly
  - Black Tank Flush
- EXTERIOR OPTION**
  - Aluminum Rims
  - Power Stabilizer Jacks
  - Power Tongue Jack
  - Coleman Bumper Mount Grill
  - 15k BTU A/C IPO 13.5k BTU
- INTERIOR OPTIONS**
  - 24" or 32" LED TV (Select Models)
  - Tri-Fold Sleeper Sofa
- ULTRA-LITE PACKAGE**
  - Bear Cage Construction
  - Fully Laminated Exterior
  - Winterization
  - Exterior TV Mount
  - Pocket Doors in Bedroom (Select Models)
  - Oversized Dinette Windows
  - Semi Gloss Grey Exterior
  - Diamond Plate Front Rock Guard
  - Dark Tinted Safety Glass Windows
  - Easy Lube Axles
- Large Folding Grab Handle
- Spare Tire & Carrier
- Front & Rear Stab Jacks
- Adjustable Power Awning with LED lighting
- Outside Speakers
- 13,500 BTU Ducted A/C
- 2 - 20 lb LP Bottles w/Cover
- TV Antenna
- Patio Light
- Oversized Baggage Doors
- Bear Cave Storage
- Foot Flush Toilet
- Night Shades Throughout
- Medicine Cabinet w/Mirror
- 6 Gallon Gas/Electric DSI Water Heater
- Sub Surround
- Kitchen & Bath Skylight
- 12V Bath Exhaust Fan
- High Spout Faucet
- 6 Cubic Foot Double Door Refer
- Three Burner Range Top w/Oven
- Range Hood with 12V Fan/Light
- Microwave
- AM/FM/CD/DVD Stereo
- Cable TV Hookup w/Booster
- Bedroom TV Hookup w/Backer
- High Output Furnace
- Central Control Station
- Smoke, LP Leak, & Carbon Monoxide Detectors
- Fire Extinguisher

**Kodiak Expandables standards and options can be found at [www.dutchmen.com](http://www.dutchmen.com)**

**DISCLAIMER:** Product information is as accurate as possible as of the brochure publication date. All features, floorplans and specifications in this brochure are subject to change without notice. Please consult Dutchmen's website at [www.Dutchmen.com](http://www.Dutchmen.com) for current product information and specifications. Tow Vehicle Disclaimer. **CAUTION:** Owners of Dutchmen recreational vehicles are solely responsible for the selection and proper use of tow vehicles. All customers should consult with a motor vehicle manufacturer or their dealer concerning the purchase and use of suitable tow vehicles for Dutchmen products. Dutchmen disclaims any liability or damages suffered as a result of the selection, operation, use or misuse of a tow vehicle. DUTCHMEN'S LIMITED WARRANTY DOES NOT COVER DAMAGE TO THE RECREATIONAL VEHICLE OR THE TOW VEHICLE AS A RESULT OF THE SELECTION, OPERATION, USE OR MISUSE OF THE TOW VEHICLE. REFERENCE DUTCHMEN MANUFACTURING OWNERS MANUAL FOR LIMITED WARRANTY DETAILS.

\*Length is defined as the distance from the centerline of hitch pin/coupler to rear bumper of trailer. \*\*Our weights represent how most units are built, inclusive of many commonly-ordered options. \*\*\*Fresh water capacity includes water heater capacity.

# LIGHT ON WEIGHT

# HEAVY ON FEATURES



## DUTCHMEN—A NORTH AMERICAN CAMPGROUND CLASSIC

Few manufacturers have built RVs for 25+ years, and only one has set the standard for innovation AND value. Dutchmen IS “A North American Campground Classic.”



# Dutchmen®

Legendary Innovation. Trailblazing Value.

# MORE STANDARD FEATURES MORE VALUE

Dutchmen RVs turn more heads on the lot and in the campground than any other. Why? While other manufacturers offer features as options, Dutchmen tends to make those same features standard. Call it “bang for the buck,” “more for your money,” or simply “more value.” **We’ve built a reputation for bringing RV owners more standard features for less money** for more than 25 years . . . and it’s a reputation we plan to keep.

# 300

## STRONG

### NATION WIDE DEALER NETWORK

More than 300 Dutchmen dealers across North America and our industry-leading service center in Goshen, Indiana, combine for your peace of mind before, during and after the sale. Rest assured no matter where your travels take you, **the best-resourced RV manufacturing company in the world is behind you all the way.**

PO BOX 2000 • 2164 Caragana Court  
Goshen, Indiana 46527 Sales: 574.537.0600  
[www.dutchmen.com](http://www.dutchmen.com)

At Dutchmen, quality is our standard. **Every single Dutchmen RV that comes off the line receives its own pre-delivery inspection.** Typically, a competitor performs random inspections, meaning you won’t find this commitment to quality anywhere else.



For the latest updates on floorplans and specs, scan this QR Code with your favorite QR Code reader.



**[www.dutchmen.com](http://www.dutchmen.com)**

Visit us online to see all of the Dutchmen brands, innovative models and spacious floorplans.

Your local dealer

From giving advice to servicing products, we consider our loyal dealers the best resource for learning about Dutchmen products.

KD-DM0117-36k