

# Sunstar

# WINNEBAGO



## Why Sunstar?

- Touchscreen AM/FM dash radio with CD/DVD player (SiriusXM® ready)
- Dash workstation with USB cable connection
- Available exterior entertainment center (NA 26HE, 31KE)
- Available powered StudioLoft™ bed
- Walk-through bath with private bedroom access (31BE)
- Powered MCD blackout front shade (NA 26HE)
- Tailgate Package (29VE)
- Versa easy-swivel driver's seat
- Bunk beds (31BE)
- Powered patio awning with LED lighting
- MCD blackout roller shades



On the Cover: 29VE Solar Flare Deluxe Graphics

29VE Infinity with Honey Cherry Cabinetry

## Welcome Home

With six affordable, family-friendly floorplans built to Winnebago's® legendary construction standards, the Sunstar® is the perfect introduction to the Class A lifestyle. Each floorplan boasts at least one slideroom and is loaded with standard features such as LED lighting, MCD roller shades and an

easy-to-turn Versa cab driver seat. With an exterior kitchen featuring a stainless steel RV grill, ice chest with lid and refrigerator that will make your tailgate dreams come true, the 29VE has much to envy. If you have Class A ambitions and a modest budget, you'll find a home in the Sunstar.



### Recognized Quality

The Recreation Vehicle Dealer Association annually rates RV manufacturers and awards the Quality Circle Award to manufacturers that provide exceptional products, service and support. Winnebago Industries is proud to be the only manufacturer that has received this award every year since its inception.



29VE Infinity with Honey Cherry Cabinetry

The Sunstar works hard to make you feel at home, starting with four fabulous décor collections for you to choose from and a spacious lounge to enjoy. MCD blackout roller shades offer privacy while LED ceiling lights are dialed into the perfect color temperature for the room and save energy. The sofa/bed (NA 26HE) faces the HDTV and is positioned near the swivel cab seats to encourage conversation. The sofa/bed, dinette and available ceiling-mounted StudioLoft™ bed all quickly transform into sleeping spaces making the Sunstar a natural fit for families or visiting friends.



MCD Blackout Roller Shades



Cab Seats



Available StudioLoft Bed with Ladder



Front Wraparound Curtain



29VE HDTV



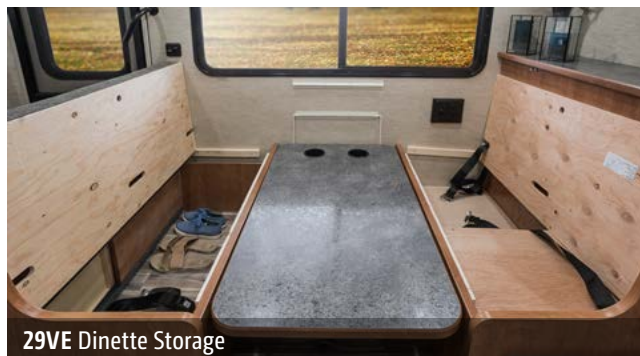
29VE Dinette



29VE Sofa



OnePlace® Systems Monitor



29VE Dinette Storage



29VE Sofa as Bed



A slideout on each floorplan provides the galley space you need to prepare your famous home-cooked meals. Standard appliances include a microwave oven, three-burner range with oven and a two-door refrigerator freezer. Enjoy your freshly prepared feast in the four person dinette or the extra spacious U-shaped dinette (31KE). The dinette adds to its versatility by converting into a bed when you need an extra sleeping space.





29VE Bedroom

All Sunstar floorplans, ranging from 26 to 32 feet, include the comfort and privacy of a private master bedroom. An available bedroom HDTV gives you an extra reason to call it a night in the 27PE, 29VE, 31BE, and 32YE. If you travel with family, the bunk beds in the 31BE are a tremendous choice. The bunks are available with individual DVD players and monitors to really take family travel to the next level and provide often-needed peace and quiet.



29VE Shirt Closet



29VE Bath Skylight



29VE Shower



29VE Under Bed Storage

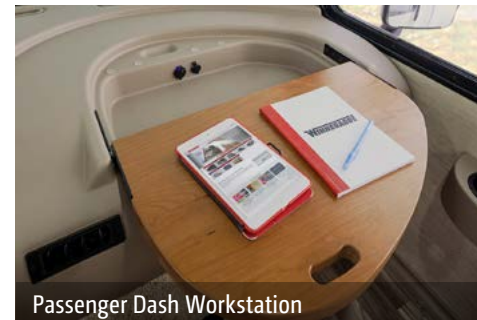


29VE Bath



Dash

The 6.2" dash monitor puts you in charge of your sound and your surroundings. It includes a rearview monitor and controls for the cab stereo with CD/DVD player, auxiliary input, Spotify, AppRadio, and available SiriusXM satellite radio. The easy-to-turn Versa driver's seat is designed with multiple adjustment points for long-term comfort, while both cab seats turn to face the lounge so you can join the conversation when you're not on the road. A passenger dash workstation with a USB connection and 12-volt outlet helps you stay connected no matter how far you venture off the beaten path.



Passenger Dash Workstation

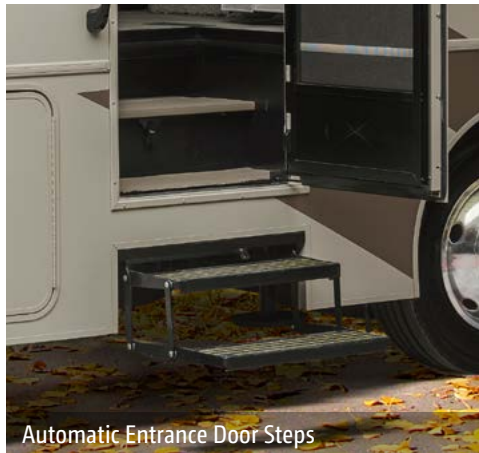


Powered Mirrors with Defrost

Make yourself at home in the great outdoors under the powered patio awning. Large, lighted storage compartments feature paddle-style latches and are large enough to house your lawn chairs and supplies. The 29PE, 29VE, 31BE, and 32YE offer exterior entertainment centers with an HDTV and speakers, while the 29VE takes outdoor living to the next level with a complete exterior kitchen that includes a portable stainless steel grill, sink, refrigerator, and countertop for the ultimate tailgating experience.



29VE Powered Patio Awning



Automatic Entrance Door Steps



Exterior Service Center



29VE Exterior Entertainment



Stainless Steel Wheel Liners



29VE Available Tailgate Package



**Fiberglass Roof**

The crowned, one-piece fiberglass roof is backed by a 10-year limited parts-and-labor roof skin warranty.

**Rubber Can't Cut It**

Rubber roofs used by competitors can streak and degrade over time.

**Thermo-Panel® Sidewalls**

By layering fiberglass and high-density block foam insulation with welded aluminum support structures, we create some of the industry's strongest, most durable and lightweight sidewalls.

**E-Coating**

An electrodeposition coating helps protect critical steel components.

**Embedded Steel** Metal substructures embedded into the sidewall provide solid attachment points to keep cabinets and appliances mounted securely in place.

**Laser-Cut Tubing**

Precision laser cutters create precision joints in structural steel that are stronger and require less welding.



**Interlocking Joints**

Specially engineered interlocking joints connect the floor, sidewalls and roof where competitors often rely on simple screws to bear the weight.



**Solid Framework** Structural extruded aluminum creates an extremely strong solid frame.

**SUPER  
STRUCTURE**

BUILT TO LAST

Every coach—from our smallest Class C to our largest diesel-pusher model—is built to Winnebago's® legendary SuperStructure® construction design. It's a process developed and refined over more than 50 years of building some of the strongest, most durable coaches in the industry.

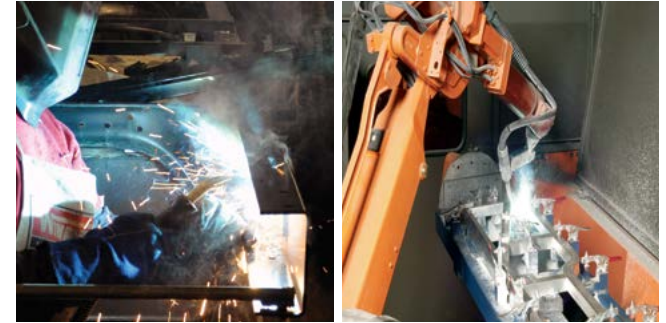
**TESTING** Before rolling out of our factories, every coach undergoes an extensive 113-point inspection. Each coach also passes a high-pressure water test that simulates rain at a rate of 50-inches per hour to check for leaks. During the design process, our computer simulations, physical testing center, and rigorous test track ensure each model is built to last.



**DETAILS** At Winnebago, we treat the features you can't see with the same care as the ones you can. Look in the access panels of some of our competitors' coaches and you'll see loose insulation and wires haphazardly strewn about. Winnebago maintains a clean fit and finish throughout so your coach will last for the long haul.



**BUILT IN-HOUSE** We process and finish key aluminum parts. We rotocast our own plastic components. In fact, we manufacture most of our own parts so they are designed to fit the space, rather than fitting the space to an awkward off-the-shelf component size.

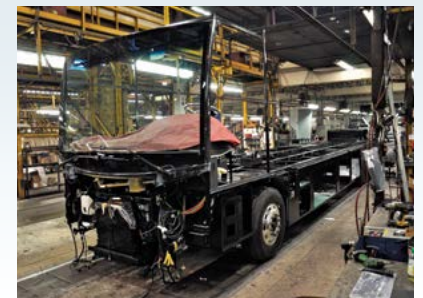


**SUPER  
STRUCTURE**  
BUILT TO LAST

Visit [BetterBuiltRVs.com](http://BetterBuiltRVs.com) to gain real insight into what goes into a Winnebago motorhome.

**TAKE A TOUR** We're proud of our processes, state-of-the-art facilities, and the people who make Winnebago number one. We invite you to visit our complex in Forest City, Iowa, for a firsthand look at the dedication and technology behind every motorhome we build.

Call (641) 585-6936 or (800) 643-4892 or visit us online at [Winnebagolnd.com/company/visit](http://Winnebagolnd.com/company/visit) for more information.



Choose from four fabric collections with a Honey Cherry wood finish.

## Infinity



Primera



Feature Fabric



Bedspread



Laminate Countertop



Vinyl Flooring



Honey Cherry

Winnebago® reserves the right to change décor materials and specifications without notice or obligation.

Choose from four fabric collections with a Honey Cherry wood finish.

## Legend



Primera



Feature Fabric



Bedspread



Laminate Countertop



Vinyl Flooring



Honey Cherry

Winnebago® reserves the right to change décor materials and specifications without notice or obligation.

Choose from four fabric collections with a Honey Cherry wood finish.

## Rockslide



Primera



Feature Fabric



Bedspread



Laminate Countertop



Vinyl Flooring



Honey Cherry

Winnebago® reserves the right to change décor materials and specifications without notice or obligation.

Choose from four fabric collections with a Honey Cherry wood finish.

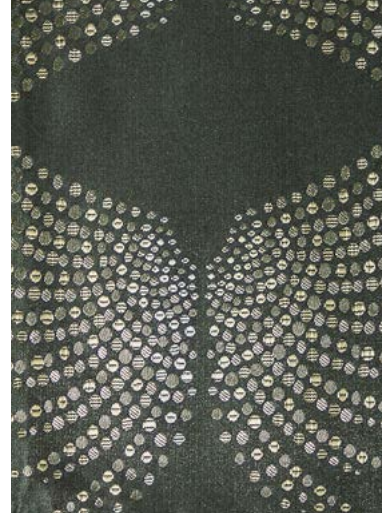
## Stardust



Primera



Feature Fabric



Bedspread



Laminate Countertop



Vinyl Flooring



Honey Cherry

*Winnebago® reserves the right to change décor materials and specifications without notice or obligation.*

The Sunstar comes standard with two premier high-gloss deluxe graphics package options.



**Solar Flare**  
DELUXE GRAPHICS

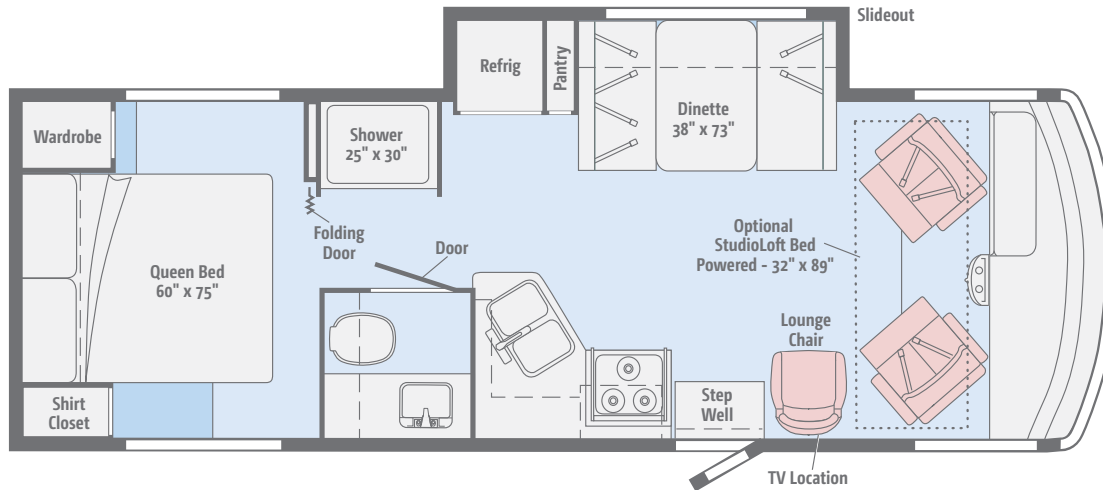


**Indigo**  
DELUXE GRAPHICS

[Click here to explore this floorplan's web page.](#)

## 26HE

With a private bedroom, full galley, dinette, and even a roomy lounge, the 26HE might be the most efficiently designed 26-foot motorhome on the market.

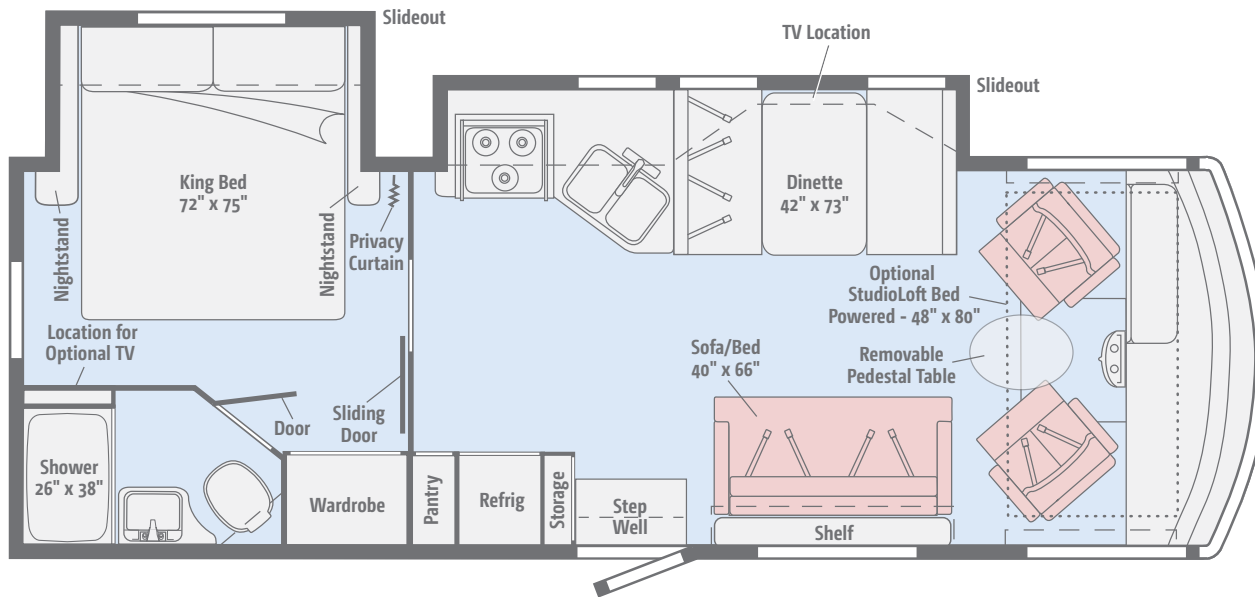




[Click here to explore this floorplan's web page.](#)

## 27PE

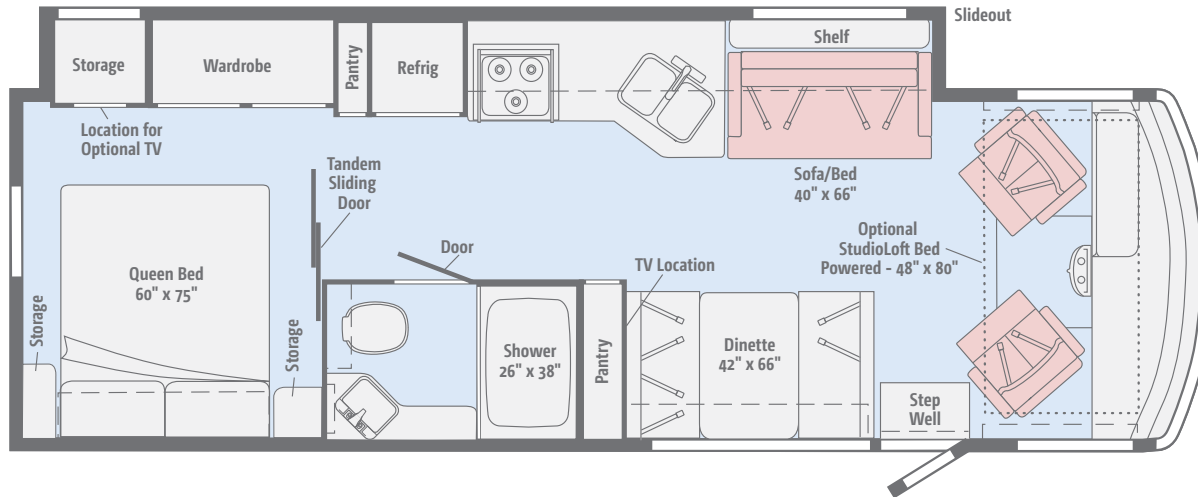
Wind-down for the night in the comfortable king bed while watching your favorite show on the available bedroom HDTV.



[Click here to explore this floorplan's web page.](#)

## 29VE

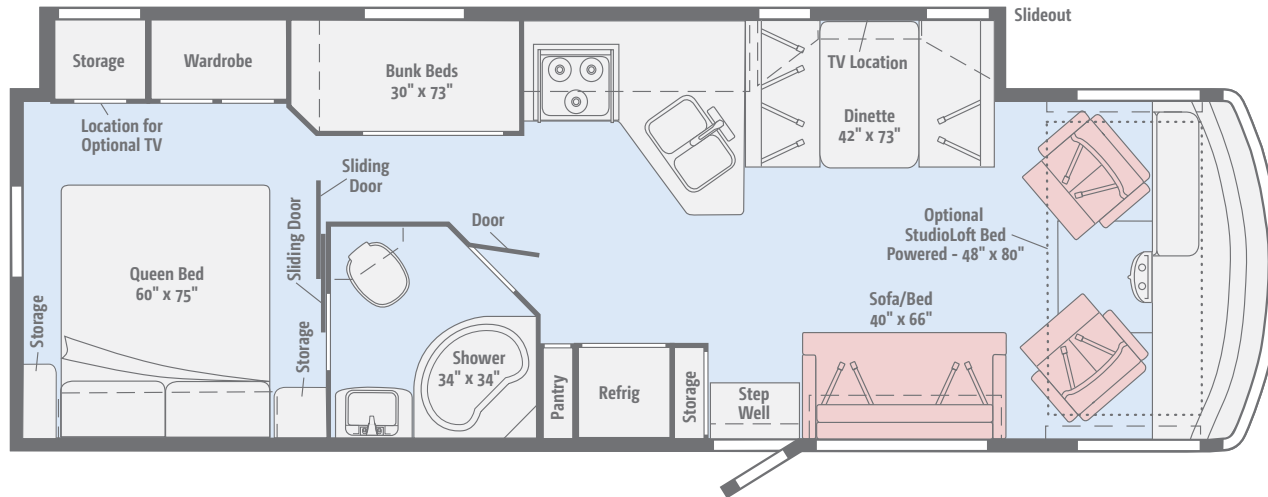
Enjoy a slideout that runs the entire length of the driver's side, allowing room for a sofa and dinette. Outside, the available exterior kitchen makes you king of the campsite.



[Click here to explore this floorplan's web page.](#)

## 31BE

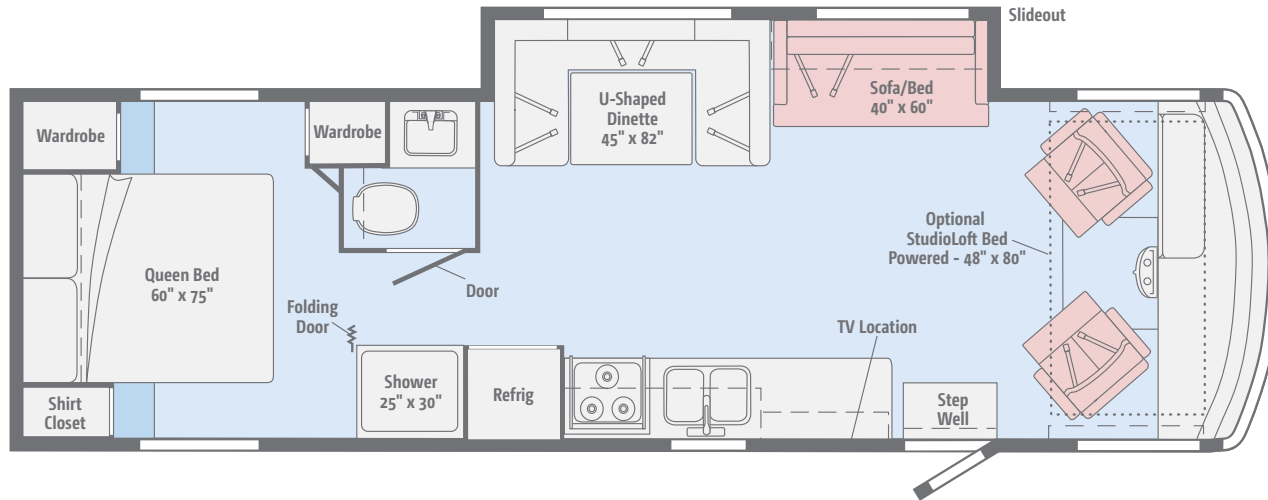
All are welcome in the 31BE that features five separate sleeping areas, including mid-coach bunk beds, for family and friends to enjoy.



[Click here to explore this floorplan's web page.](#)

## 31KE

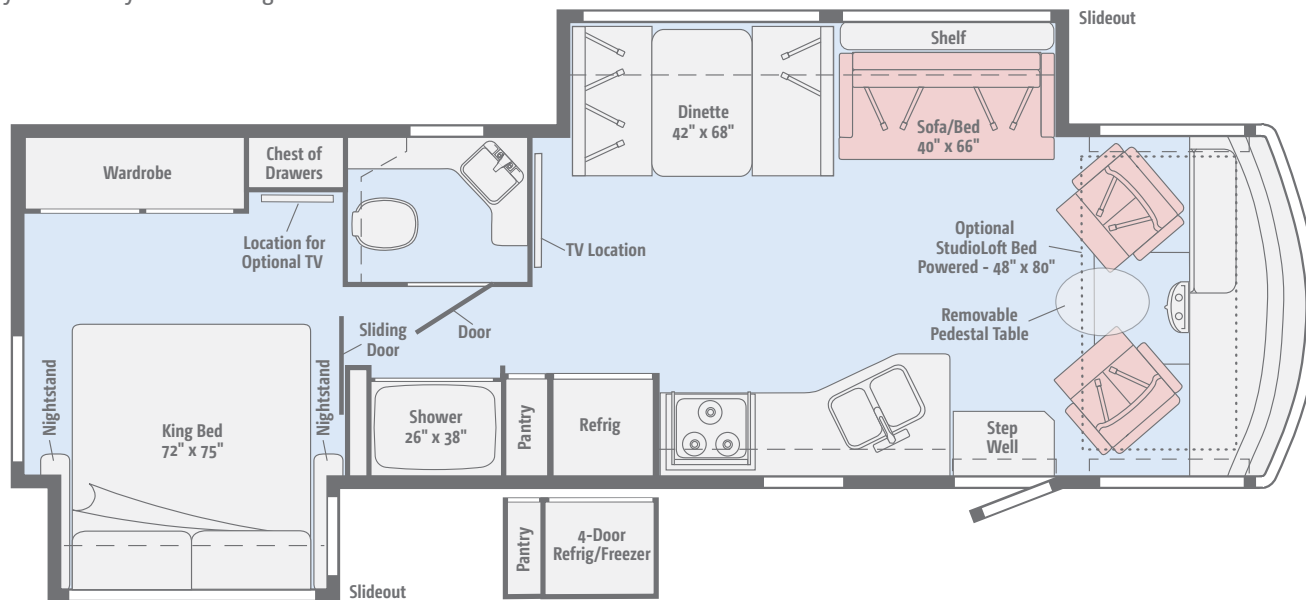
Gather around the U-shaped dinette or spread out on the sofa/bed and swivel cab seats. The 31KE has the space and amenities to make everyone feel welcome.



[Click here to explore this floorplan's web page.](#)

## 32YE

The sofa/bed, dinette, and swivel cab seats create a lounge for family and friends to enjoy. Retreat to a private master bedroom with a king bed when you are ready to call it a night.



Weights & Measures	26HE	27PE	29VE	31BE	31KE	32YE
Length	27'4"	28'8"	30'3"	32'3"	31'6"	32'11"
Exterior Height <sup>1</sup>	12'2"	12'2"	12'2"	12'2"	12'2"	12'2"
Exterior Width <sup>2</sup>	8'5.5"	8'5.5"	8'5.5"	8'5.5"	8'5.5"	8'5.5"
Exterior Storage <sup>3</sup> (cu. ft.)	117	133	145	147	168	124
Awning Length	19'	19'	17'	19'	17'	17'
Interior Height	6'8"	6'8"	6'8"	6'8"	6'8"	6'8"
Interior Width	8'0.5"	8'0.5"	8'0.5"	8'0.5"	8'0.5"	8'0.5"
Freshwater Tank Capacity <sup>4</sup> (gal.)	54	51	70	70	64	64
Water Heater Capacity (gal.)	6	6	6	6	6	6
Holding Tank Capacity - Black/Gray <sup>4</sup> (gal.)	43/38	50/45	40/61	43/59	41/57	41/57
LP Capacity <sup>5</sup> (gal.)	18	18	18	18	18	18
Fuel Capacity (gal.)	80	80	80	80	80	80
GCWR <sup>6</sup> (lbs.)	23,000	23,000	23,000	23,000	23,000	23,000
GVWR (lbs.)	16,000	18,000	18,000	18,000	16,000	18,000
GAWR - Front (lbs.)	6,500	7,000	7,000	7,000	6,500	7,000
GAWR - Rear (lbs.)	11,000	12,000	12,000	12,000	11,000	12,000
Wheelbase	158"	178"	190"	208"	190"	208"
Seating Capacity	5	6	7	7	6	7

## Optional Package Upgrade

**Tailgate Package** refrigerator, 3-drawer cabinet, LED lights, portable grill w/folding stand, Quick-Connect LP hose, stainless steel sink, ice chest with drain plug, silverware tray, wall-mounted bottle opener, garbage bag holder, paper towel holder (29VE, requires ordering the 1000-watt inverter option)

**Cooling Upgrade Package** w/two AC receptacles, 50-amp. power cord, 5,500-watt Cummins Onan® MicroQuiet™ gas generator (32YE)

## Ford® F53 Chassis

3-valve Triton® V10 engine SEFI, TorqShift™ 6-speed automatic transmission w/tow/haul, 175-amp. alternator

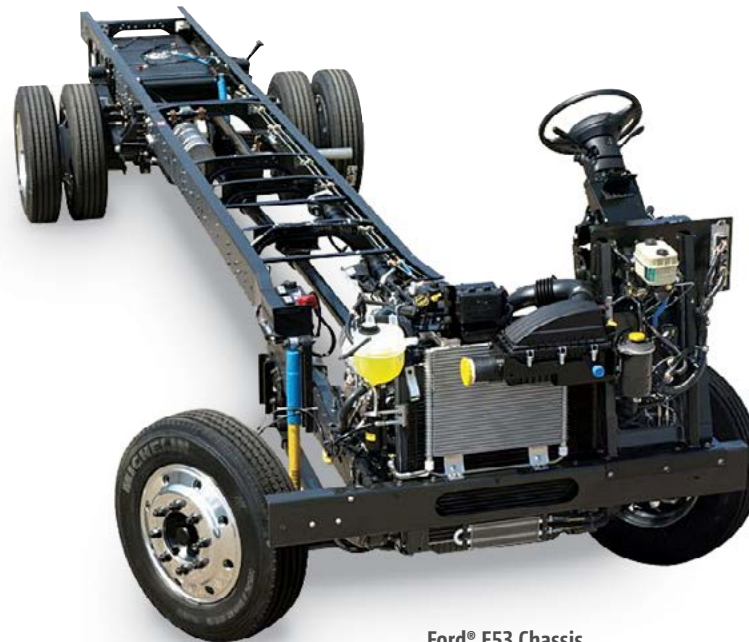
Hydraulic brakes w/ABS

Trailer Hitch<sup>6</sup> 5,000-lb. drawbar/500-lb. maximum vertical tongue weight

7-pin connector

Stainless steel wheel liners

Automatic hydraulic leveling jacks



Ford® F53 Chassis

## Cab Conveniences

**Radio/Rearview Monitor System** DVD receiver with 6.2" LCD color touch screen, handheld remote, iPod®/MP3 input, rear color camera, SiriusXM®-ready, Spotify®, AppRadio One

**Cab seats adjustable armrests, fixed lumbar support, and multi-adjustable slide/recline/swivel**

**3-point seat belts**

**Chassis/house battery radio power switch**

**Power steering** w/tilt wheel

**Power mirrors** w/defrost

**Powered MCD blackout front shade** (NA 26HE)

**Front wraparound curtain** (26HE)

**Cruise control**

**Map light**

**Sunvisors** (26HE)

**Dash workstation** w/USB and 12-volt powerpoint

**Motor cover** w/integrated snack tray

## Interior

**32" HDTV** (26HE, 31KE)

**39" HDTV** (31BE)

**40" HDTV** (27PE, 29VE, 32YE)

**Amplified digital TV antenna system**

**Satellite system ready** (27PE, 32YE)

**MCD blackout roller shades**

**OnePlace® systems monitor**

**Roof vent** (lounger) (NA 32YE)

**Tinted windows**

**LED lights**

**Vinyl flooring** throughout

**Assist bar**

**StudioLoft™** (powered w/ladder)

## Galley

**Laminate countertops** w/decorative backsplash

**2-door refrigerator/freezer** (26HE, 29VE, 31KE)

**Large, 2-door refrigerator/freezer** (27PE, 31BE, 32YE)

**Microwave oven** w/touch controls

**3-burner range** w/oven

**Stainless steel double sink**

**Powered roof vent**

### OPTIONAL EQUIPMENT

**Large 4-door refrigerator/freezer** w/icemaker, cold water purification system (32YE)

## Bath

**Laminate countertop** w/decorative backsplash

**Flexible showerhead**

**Textured glass shower door**

**Shower door** w/retractable screen (27PE)

**Skylight**

**Toilet** w/foot pedal

**Powered roof vent** (NA 27PE, 32YE)

**Powered roof ventilator fan** (27PE, 32YE)

**Towel bar(s)** (NA 27PE)

**Towel ring(s)**

**Robe hook(s)**

**Tissue holder**

## Bedroom

**King bed** w/foam mattress and storage below (27PE, 32YE)

**Queen bed** w/foam mattress and storage below (NA 27PE, 32YE)

**Bedsprad**

**Headboard**

**Bunk beds** w/foam mattresses, mattress covers, and privacy curtain (31BE)

**Powered ventilator fan** (29VE, 31BE)

**Room divider curtain** (27PE)

### OPTIONAL EQUIPMENT

**2 DVD players** w/10.1" LCD monitors and headphones (31BE bunk beds)

**24" HDTV** (29VE, 31BE, 32YE)

**32" HDTV** (27PE)

## Exterior

**Premium high-gloss sidewall skin**

**Automatic entrance door steps**

**Powered patio awning** w/LED lighting

**Front mud flaps**

**Porch light** w/interior switch

**Incandescent lighted storage compartments** (in select compartments)

### OPTIONAL EQUIPMENT

**Entertainment center 32" HDTV** w/remote and speakers (27PE, 31BE, 32YE)

**Entertainment center 40" HDTV** w/remote and speakers (29VE)

## Heating & Cooling System

**14,800 BTU air conditioner** w/ChillGrille™

**30,000 BTU low-profile furnace** (NA 32YE)

**35,000 BTU low-profile furnace** (32YE)

## Electrical System

**AC/DC load center, 45-amp. converter/charger**

**30-amp. power cord**

**4,000-watt Cummins Onan® MicroQuiet™ gas generator**

**2 deep-cycle Marine/RV Group 24 batteries**

**Battery disconnect system** (coach)

**Automatic dual-battery charge control**

**Auxiliary start circuit**

**AC duplex receptacle**

**Cable TV input**

**Exterior antenna jack**

**DC receptacles**

### OPTIONAL EQUIPMENT

**AC/DC inverter** w/remote panel and exterior antenna jack. Required w/optional Tailgate Package (29VE)

## Plumbing System

**Service Center** colored labels, pressurized city water hookup w/diverter valve, drainage valves, 10' sewer hose

**6-gallon LP water heater** w/electronic ignition

**Heated holding tank compartment**

**Permanent-mount LP tank** w/gauge

**On-demand water pump**

**TrueLevel™ holding tank monitoring system**

**Winterization Package** water heater bypass valve and siphon tube

**LPG accessory connection** (patio) (29VE)

## Safety

**Child seat tether anchor** (forward facing dinette seat)

**LP, smoke, and carbon monoxide detectors**

**10 BC fire extinguisher**

**Ground fault interrupter**

**High-mount brake lamp**

## Warranty<sup>7</sup>

**12-month/15,000-mile basic limited warranty<sup>8</sup>**

**36-month/36,000-mile limited warranty on structure<sup>8</sup>**

**10-year limited parts-and-labor warranty on roof skin<sup>8</sup>**

### FOOTNOTES

- The height of each model is measured to the top of the tallest standard feature and is based on the curb weight of a typically equipped unit. The actual height of your vehicle may vary by several inches depending on chassis or equipment variations. Please check with your dealer for further information.
- Floorplans feature a wide-body design - over 96" in making your purchase decision, you should be aware that some states restrict access on some or all state roads to 96" in body width. Before making your purchase decision, you should confirm the road usage laws in the states of interest to you.
- The load capacity of your motorhome is designated by weight, not by volume, so you cannot necessarily use all available space when loading your motorhome.
- Capacities are based on measurements prior to tank installation. Slight capacity variations can result due to installation applications.
- Capacities shown are tank manufacturer's listed water capacity (W.C.). Actual filled LP capacity is 80% of listing due to overfilling prevention device on tank.
- Actual towing capacity is dependent on your particular loading and towing circumstances which includes the GVWR, GAWR, and GCWR as well as adequate trailer brakes. Please refer to the Operator's Manual of your vehicle for further towing information.
- See separate chassis warranty.
- See your dealer for complete warranty information.  
NA Not Available

Not all items available in combination. See dealer for details.

Winnebago's® continuing program of product improvement makes specifications, equipment, model availability, and prices subject to change without notice. Published content reflects the most current product information at time of printing. Please consult your dealer for individual vehicle features and specifications.





Let us host  
your next

# Adventure



[WGOAdventures.com](http://WGOAdventures.com)



**WINNEBAGO**<sup>TM</sup>  
RV INSURANCE



From RV to personal insurance, Winnebago RV Insurance can provide all the coverage and services you need to feel at home on the road.

**For more information:**  
**(800) 642-4892**

Connect with Winnebago (Click one of the following)



Like us



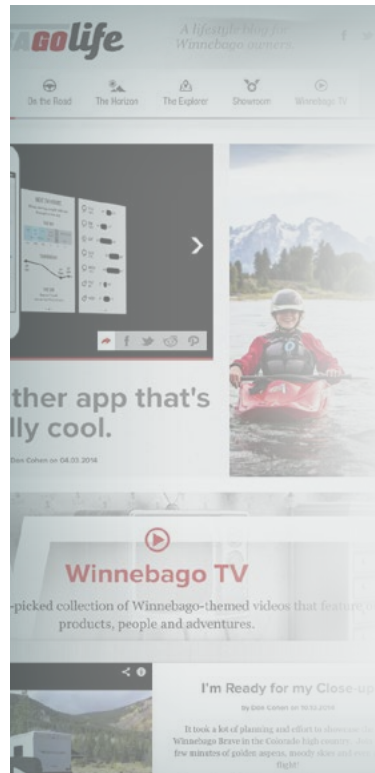
Follow us



Watch us

## WinnebagoInd.com Has All The Answers

Visit [WinnebagoInd.com](http://WinnebagoInd.com) on your computer, smartphone, or tablet for the latest product information and updates.



## Welcome to GoLife!

Visit our lifestyle blog for motorhome news, personal travelogues, and community stories.

**[WinnebagoLife.com](http://WinnebagoLife.com)**

**GoLife**



# **PREFERRED CARE PROGRAM**

We back our motorhomes with best-in-class support both before and after the sale:

- 12-month/15,000-mile basic limited warranty
- 36-month/36,000-mile limited warranty on structure
- 10-year limited parts-and-labor warranty on fiberglass roof
- Complimentary 24-hour roadside assistance program
- TripSaver® Fast Track Parts guarantees that in-stock warranty parts ship directly to your dealer within 24 hours
- National dealer service network



For more information:  
[WGOService.com](http://WGOService.com)



## **WIT CLUB**

### Join the Club, Join the Fun

Here's the perfect way to begin your life on the road as the owner of a new Winnebago – by joining the exclusive WIT Club. Start your adventure with other fun-loving WIT Club members from across the country and get the most out of your new Winnebago motorhome.



#### Members enjoy:

- Caravans and rallies
- Newsletters
- Local and state group activities
- RV travel benefits

See more at  
[WITClub.com](http://WITClub.com)



### Grand National Rally

Each year, thousands of Winnebago owners descend upon Forest City, Iowa. Rally-goers enjoy an unforgettable week reconnecting with friends, taking tours, participating in activities, and more. Join the adventure next July!

# **WINNEBAGO**<sup>IND</sup>

## CONTACT US

### GENERAL INQUIRIES

Corporate Switchboard  
(641) 585-3535

### CURRENT PRODUCT OWNER AND SERVICE-RELATED INQUIRIES

(800) 537-1885  
or [@winnebagoind.com](mailto:@winnebagoind.com)

### NEW VEHICLE SALES INQUIRIES

[sales@winnebagoind.com](mailto:sales@winnebagoind.com)

### FAX

(641) 585-6966

### POSTAL ADDRESS

Winnebago Industries, Inc.  
P.O. Box 152  
Forest City, IA 50436

### STREET ADDRESS

Winnebago Industries, Inc.  
605 West Crystal Lake Road  
Forest City, IA 50436