

Shasta
EST. 1941

Oasis

Shasta - Oasis Lightweight Travel Trailers



Leading Value in the RV Industry

A wide-angle photograph of the interior of a Shasta Oasis 2 RV. The space is compact and well-furnished. On the left, a kitchenette features a white double sink with a chrome faucet, a black range hood, and dark wood cabinetry. A countertop holds a basket of fruit, a white teapot, and a small potted plant. In the center, a wooden door is open, revealing a bathroom with a shower. To the right, a dining area includes a small table with two orange mugs and a bowl, surrounded by upholstered seating with a patterned fabric. A large window with a patterned valance looks out onto a green forest. The floor is covered in light-colored wood-look laminate. The ceiling has recessed lighting and a large air vent.

Your Value Leader

AFFORDABLE PARADISE- OASIS

All the amenities you would expect at a price you can afford! Enjoy a quick meal on your high output 3 burner cook top stove. There's plenty of room in the large 6 cubic foot refrigerator to take your favorite campfire cuisine. Long hot showers, no problem with a 6 gal. quick recovery DSI water heater standard. Lots of storage, comfortable beds and relaxing furniture makes your new Oasis a paradise away from home.



SPACIOUS LIVING

You will enjoy your time spent camping in an Oasis. Exceptionally roomy slide outs add to the living space and large windows bring the outdoors inside. Handcrafted pocket bored and screwed cabinetry sets the Oasis apart from the competition and ensures years of quality use. You will appreciate all the storage under the dinette, sofa and queen size bed in most models. Designer Carefree flooring is easy to clean and gives your new Oasis a residential feel. Spacious, quality, light weight – Oasis delivers for your next travel adventures.

ADDED AMENITIES, ADDED VALUE!

Everywhere you turn, Shasta has added value to the Oasis. The Centrally located A/C keeps you comfy and cool. The high rise kitchen faucet with a 60/40 large sink helps to manage those family meals. Ball bearing drawer guides open and close with ease. Decorative countertops are durable and easy to maintain. Equipment like the standard LED lights are bright and energy efficient. Your new Oasis is wired for an aftermarket back up camera and a portable solar panel prep. It's all there, just plug in and enjoy!



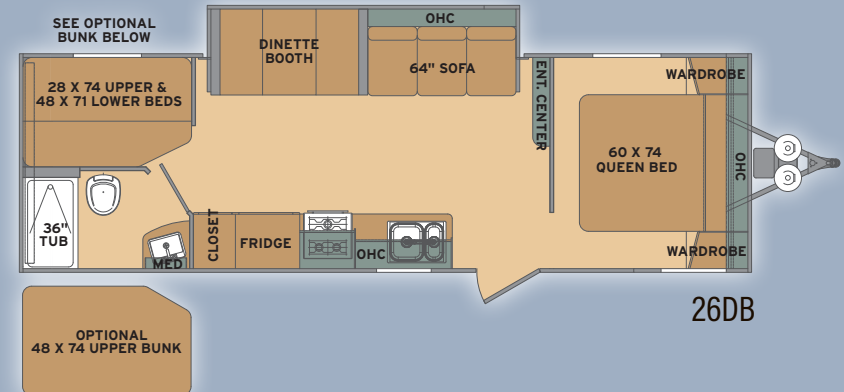
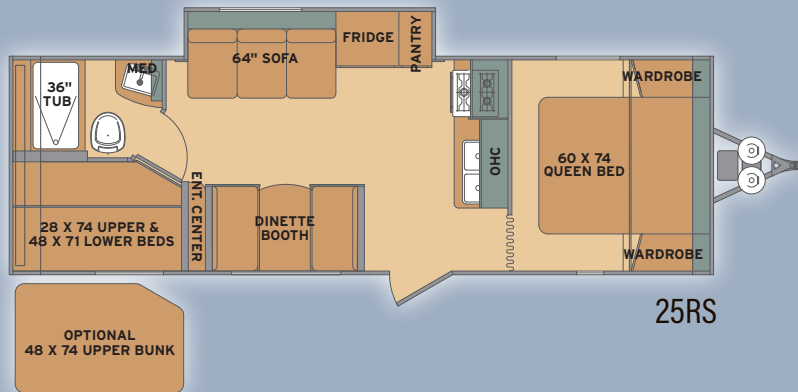
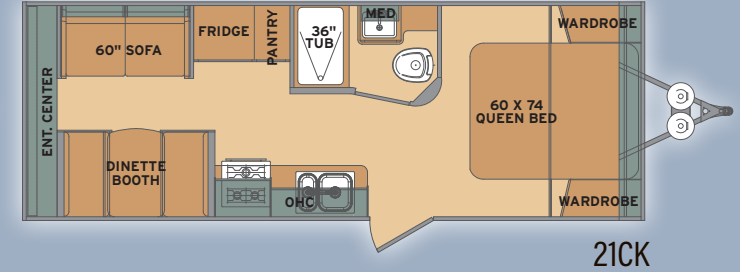
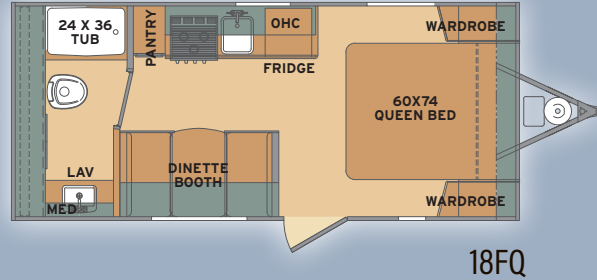
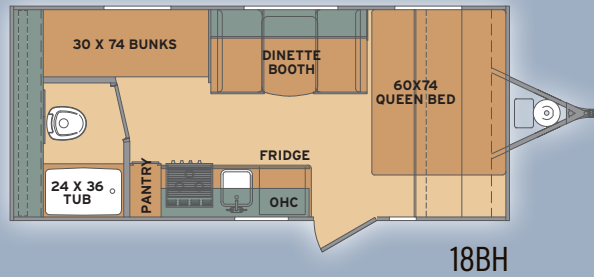


SLEEP EASY IN AN OASIS

At the end of the day, Oasis has the sleeping options to fit your needs. Queen beds, two bunks, four bunks, double beds or bunks with outside kitchens, Oasis has it all. Your kids will enjoy the soft, comfy Teddy Bear bunk covers. All dinettes and sofas make into sleeping areas too! Sleep easy, sleep late, enjoy your rest in an Oasis.



SHASTA OASIS - TRAVEL TRAILER FLOORPLANS



STANDARDS

Exterior

- Front Hitch Light
- Bumper with Drain Hose Carrier and End Caps
- Baggage Doors
- Straight Axles with Electric Brakes
- E-Z Lube Hubs
- Amber Patio Light with Inside Switch
- Radius Entry Door with Screen
- Molded Rain Gutter with Extra Long Spouts
- Black-Framed Radius Tinted Safety Glass Windows
- LP Bottle
- Front Diamond Plate Rock Guard
- Back-Up Camera Prep
- Solar Panel Prep

Power Systems

- 12V Demand Water Pump
- Systems Monitor Panel
- Auto-Ignition Furnace with Wall Thermostat
- Water Heater Bypass
- Water System Winterization Kit
- 18K BTU's Furnace
- 6-Gal Water Heater

Interior

- LED Interior Lights
- Pocket-Bored and Screwed Cabinets
- Full Extension Ball Bearing Drawer Guides
- Mini Blinds
- Box Valances in Living Area
- Jack Knife Sofa

- Cable TV Hookup in Living Area and in Bedroom
- RG6 Coax Cable
- Carefree Tile Flooring
- Under Bed Storage

Kitchen

- Residential 60/40 Sink
- High Goose Neck Faucet
- Range Hood with Exhaust Fan and Light

Bathroom

- Powered Roof Vent
- Marine Toilet with Foot Flush
- Medicine Cabinet with Mirror
- Large Sink

Construction

- .024 Aluminum Exterior Skin
- R-7 Fiberglass Insulation in Sidewall, Floor and Roof
- Radius Wood Rafters
- Aerodynamic Radius Front Profile
- 16"-On-Center Wood Wall Studs
- Electric Room Slides
- One-Piece Rubber Roof with 12-Yr. Warranty
- 8' Exterior Width
- Cambered Steel I-Beam Frame

Safety Features

- CO2 Detector
- LP Leak Detector
- Fire Extinguisher and Smoke Alarm

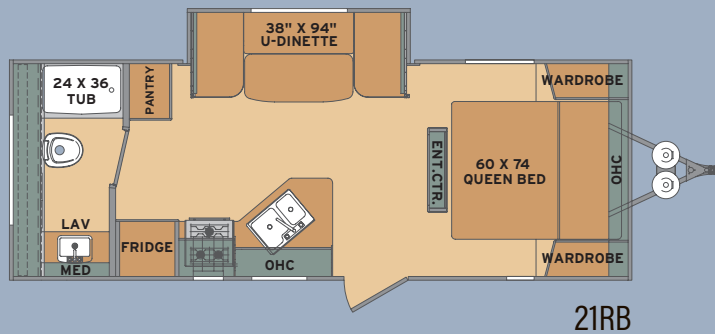
OPTIONS

Exterior

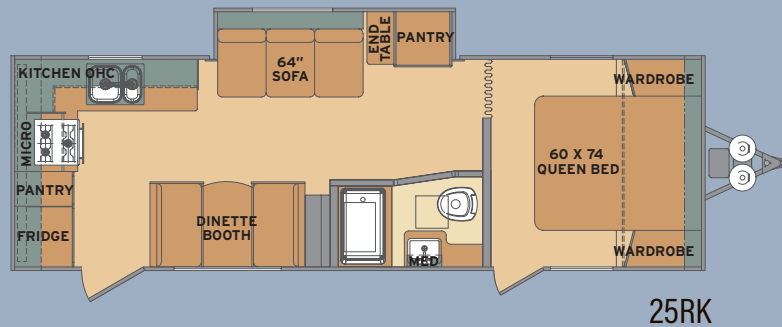
- Radial Spare Tire and Carrier
- (4) Stab Jacks
- Electric Awning
- Outside Shower
- 2ND LP Bottle with Auto Changeover and ABS Cover

Interior

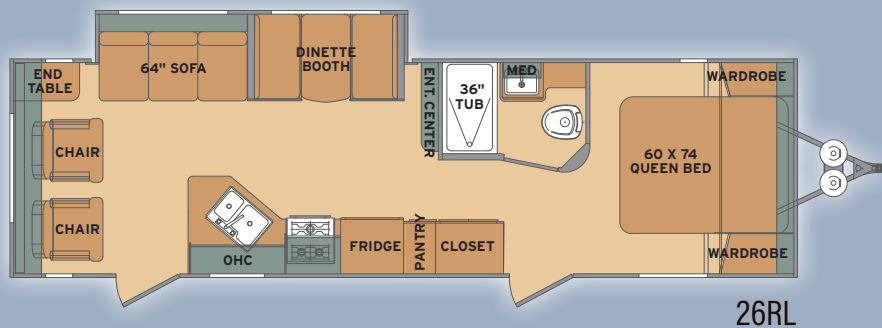
- Range with Oven in Place of Cooktop
- 13.5K BTU Ducted A/C
- 15K BTU Ducted A/C
- 15K BTU in Place of 13.5K BTU A/C
- 48" Top Bunk IPO Std 28" Bunk (25RS, 26DB)



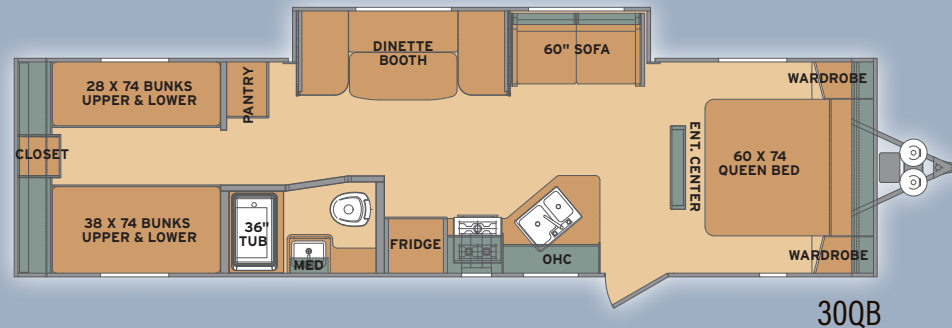
21RB



25RK



26RL



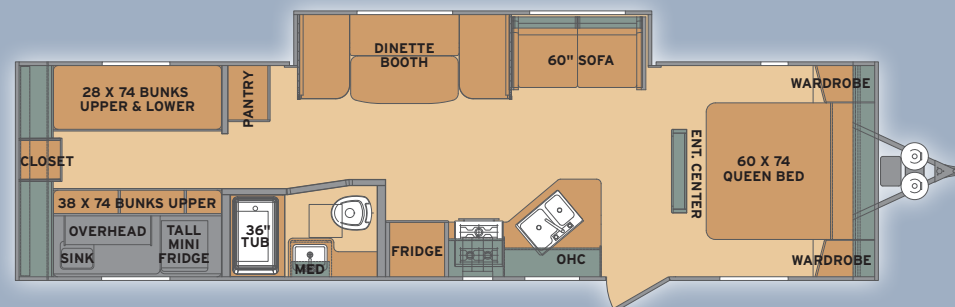
30QB

Camping with Ease Package (mandatory)

- 6-Gal. Gas DSI HW Heater
- 13.5 BTU A/C
- 3-Burner Cooktop
- Microwave Oven
- 6-CU. FT. Refrigerator
- Radial Tires
- Patio Awning

Camping Essentials Package For 18BH & 18FQ Only

- 6-Gal. Gas DSI HW Heater
- Microwave Oven
- 13.5 BTU A/C
- 3-CU. FT. Refrigerator
- 3-Burner Cooktop
- Radial Tires
- Coach Net Roadside Assistance
- Patio Awning



310K



THE SHASTA STORY - Leading Value in the RV Industry

In 1941, the first Shasta "house trailer" was built to be used as mobile military housing. Today, over 75 years later, Shasta remains an important player in the multi-billion-dollar RV industry. As one of the industry's longest producers of recreational vehicles, Shasta is proud of its longevity. We've earned our success in the best possible way - through experience ... more experience than any other RV company in the world. Shasta's respected name prevails in today's fast-moving RV industry because of experience, combined with a strong, service-oriented dealer network, a loyal, repeat customer base, and our outstanding association with our parent company, Forest River.

OASIS FLOOR PLAN	18BH	18FQ	21CK	21RB	25RS	25RK	26DB	26RL	30QB	310K
Length Overall	21' 9"	21' 9"	25' 10"	25' 7"	28' 11"	28' 11"	29' 11"	31' 11"	34' 8"	34' 8"
Width	96"	96"	96"	96"	96"	96"	96"	96"	96"	96"
Tire Size	ST225/75R15	ST225/75R15	ST205/75R14	ST205/75R14	ST205/75R14	ST205/75R14	ST205/75R14	ST205/75R14	ST205/75R14	ST205/75R14
Exterior Height w/ A/C	10' 5"	10' 5"	10' 7"	10' 7"	10' 9"	10' 9"	10' 7"	10' 9"	10' 9"	10' 9"
Main Slide Room Height	N/A	N/A	N/A	5' 9"	5' 9"	5' 9"	5' 9"	5' 9"	5' 9"	5' 9"
GVWR (Gross Vehicle Weight Rating)	4,749	4,749	7,393	7,390	7,508	7,459	7,589	7,629	7,653	7,630
UVW (Unloaded Vehicle Weight)	3,163	3,163	3,939	4,532	4,649	5,203	5,234	5,295	5,853	5,689
Hitch Weight	349	349	393	400	508	460	589	629	653	630
CCC (Cargo Carrying Capacity)	1,586	1,586	3,454	3,858	2,859	2,256	2,336	2,334	1,800	1,941
Fresh Water Tank Cap. (gal.)	42	42	42	42	42	42	42	42	42	42
Grey Water Tank Cap. (gal.)	36	36	36	36	72	72	36	36	36	36
Black Water Tank Cap. (gal.)	36	36	36	36	36	36	36	36	36	36
Awning	12'	12'	16'	16'	17'	16'	17'	20'	17'	17'
Furnace (BTU's)	18K	18K	18K	18K	18K	18K	18K	18K	18K	18K
Water Heater Capacity (gal.)	6	6	6	6	6	6	6	6	6	6
LP Capacity (gal.)	4.5	4.5	4.5	4.5	4.5	4.5	4.5	4.5	4.5	4.5

TOWABLES DEFINITIONS

GVWR (Gross Vehicle Weight Rating) - is the maximum permissible weight of the unit when fully loaded. It includes all weights, inclusive of all fluids, cargo, optional equipment and accessories. For safety and product performance do NOT exceed the GVWR.

GAWR (Gross Axle Weight Rating) - is the maximum permissible weight, including cargo, fluids, optional equipment and accessories that can be safely supported by a combination of all axles.

UVW (Unloaded Vehicle Weight) - is the typical weight of the unit as manufactured at the factory. It includes all weight at the unit's axle(s) and tongue or pin and LP Gas. The UVW does not include cargo, fresh potable water, additional optional equipment or dealer installed accessories. *Estimated Average based on standard build optional equipment.

CCC (Cargo Carrying Capacity)** - is the amount of weight available for fresh potable water, cargo, additional optional equipment and accessories. CCC is equal to GVWR minus UVW. Available CCC should accommodate fresh potable water (8.3 lbs per gallon). Before filling the fresh water tank, empty the black and gray tanks to provide for more cargo capacity. **Estimated average based on standard build optional equipment

Each Forest River RV is weighed at the manufacturing facility prior to shipping. A label identifying the unloaded vehicle weight of the actual unit and the cargo carrying capacity is applied to every Forest River RV prior to leaving our facilities. The load capacity of your unit is designated by weight, not by volume, so you cannot necessarily use all available space when loading your unit.



Forest River, Inc. encourages our customers to purchase their Forest River products from a local dealership whenever possible for the following reasons:

- 1) Forest River, Inc. dealers are independently owned and operated businesses so priority service and scheduling is at their discretion and is often provided to customers that purchased their unit at that dealership.
- 2) Purchasing locally allows customers to establish meaningful relationships with a dealer, enhancing the RV experience through assistance with product questions, user tips or RV regulations for your state or country, and much more!
- 3) Canadian customers must meet requirements to bring an RV purchased out of the country to their home. These requirements may involve additional inspections and certifications, taxes and fees. Your local Canadian Dealer is a professional at meeting these requirements.
- 4) Scheduling timely warranty repairs and adjustments through a local dealership provides far greater flexibility and convenience to you, the customer!

It is the goal of Forest River, Inc. that all of our RV owners fully enjoy the RV experience and that customer satisfaction meets or exceeds their expectations!



Learn More

Scan this barcode using a QR Reader on your smart phone to learn more about Forest River.



A Berkshire Hathaway company.

PRE-DELIVERY INSPECTION FACILITY

20,000 square feet of quality assurance. The bare essentials for a premium product. This state-of-the-art facility gives immediate daily feedback to production for quality assurance in every unit built.

All information contained in this brochure is believed to be accurate at the time of publication. However, during the model year, it may be necessary to make revisions and Forest River, Inc., reserves the right to make all such changes without notice, including prices, colors, materials, equipment and specifications as well as the addition of new models and the discontinuance of models shown in this brochure. Therefore, please consult with your Forest River, Inc., dealer and confirm the existence of any materials, design or specifications that are material to your purchase decision. ©Copyright 2016 Shasta, a Division of Forest River Inc - All Rights Reserved.

Shasta Recreational Vehicles • 105 CR 14 • Middlebury, IN 46540 (574) 825.7178 • www.ShastaRVing.com



YOUR SHASTA OASIS DEALER: