

Coachmen
Leader to the Great Outdoors.



CATALINA

SBX



CATALINA
SBX



321 BHDS CK



The Catalina 321BHDS CK is a perfect floorplan for a big family. This double slide-out floorplan with a huge bunkroom sleeps 9-10 comfortably. Enjoy staying outside? The 321BHDS CK has a STANDARD full size camp kitchen that includes a refrigerator, camp stove, overhead cabinets, silverware and utility drawers, and the hot and cold water at the sink drains into its own 30 gallon holding tank. This is a great way to grab refreshments, cook, and even wash up, while keeping the mess outside.



291 QBS

Catalina's 291QBS is a fantastic family floorplan! Plenty of places to sleep with the quad bunk design, and with the kid's dinette in the bunkroom, they have their own area to eat and play. A large U-shaped dinette also allows room for the whole family together. If that's not enough parents can enjoy total privacy as the master bedroom is completely separate with a solid door. Exterior storage front and back, and a large access door makes packing the bikes and other larger items a breeze.



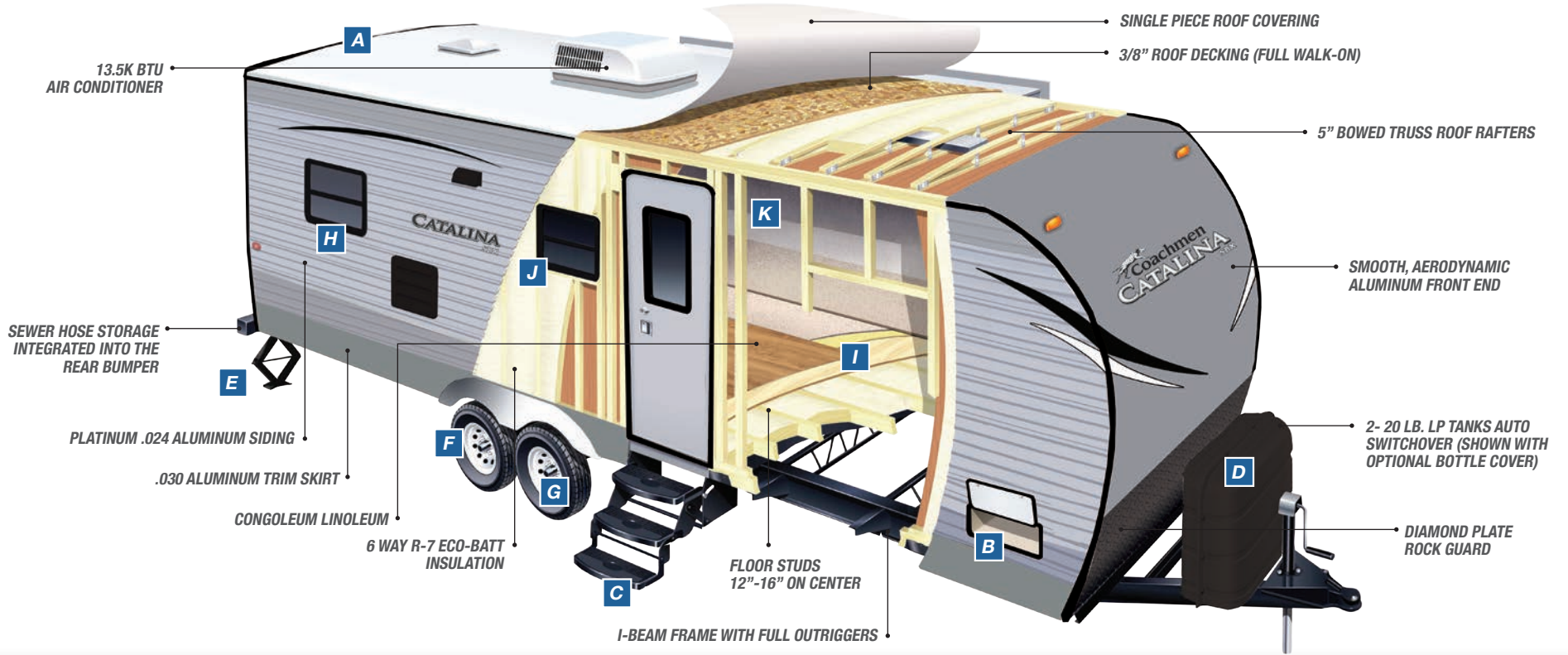
291QBS BUNK ROOM



281RKS

The 281RKS is a great couples coach. With abundant cabinet storage and countertop space, it truly gives you an "at home" feel. The entertainment area is ideally situated for conversation and comfortability, also offering several large windows for natural light and enjoying the landscape. The spacious bedroom features a walk-around queen bed, dual nightstands, and plenty of storage.





CATALINA SBX CONSTRUCTION

At Catalina we are proud of the quality that Coachmen has proven for over 52 years. We are committed and excited about continuing that superior level of construction and quality that Coachmen Catalina stands for. We achieve this not only through the use of quality materials, but through our skilled teams that care, focus, and contribute in all stages of our manufacturing process.



A
WIRELESS REAR VISION
CAMERA PREP
(CAMERA NOT INCLUDED)



B
OVERSIZED EXTERIOR
BAGGAGE DOOR



C
RADIUS TRIPLE ENTRY STEP
(DOUBLE NON SLIDE MODELS)



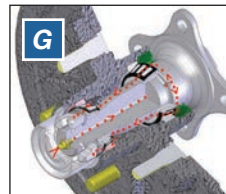
D
ABS BOTTLE COVER
(OPTIONAL)



E
FOUR (4) STABILIZER JACKS
STANDARD ON ALL MODELS
(MOST COMPETITORS OFFER
THIS AS AN OPTION NOT
A STANDARD)



F
CATALINA'S EXCLUSIVE TIRE
AND RIM PACKAGE INCLUDES:
RADIAL TIRES, POLISHED
ALUMINUM FENDER SKIRTS
AND E-COAT MAINTENANCE
FREE RIMS



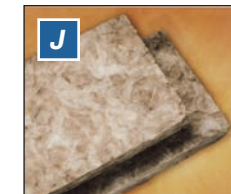
G
SUPERLUBE™ AXLES FOR
FAST AND EASY LUBRICATION



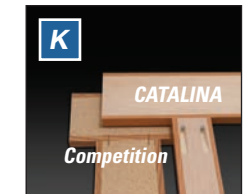
H
G20 RATED TINTED BLACK
FRAMED WINDOWS WITH
SAFETY GLASS



I
CATALINA
5/8" TONGUE IN GROOVE
PLYWOOD DECKING
GLUED AND STAPLED
TO THE FLOOR STUDS-
NOT OSB



J
FULL 6 SIDED R-7 ECO-BATT
INSULATION. THIS IS A NEW
AND SUSTAINABLE
TECHNOLOGY



K
CATALINA
REAL WOOD CABINET
STILES THAT ARE SCREWED
AND GLUED NOT STAPLED
PARTICLE BOARD LIKE THE
COMPETITION.



SBX CUSTOMER VALUE PACKAGE

Catalina would like to reward our outstanding Dealers and Customers for their continued business! There is no better way to reward you than with the SBX Customer Value Package! All of our best options have been combined into a FREE SBX Customer Value Package. At Coachmen Catalina, we overtly express our gratitude to those who have already become a part of the Coachmen Family and warmly welcome those future campers that choose Coachmen Products. Thank you for your business!

- 1 13,500 BTU DUCTED A/C
- 2 POWER AWNING WITH LED LIGHT
- 3 6 GALLON G/E DSI WATER HEATER
- 4 SKYLIGHT ABOVE TUB/SHOWER
- 5 STAB JACKS (4)

- 6 2 - 20 LB LP BOTTLES SHOWN WITH OPTIONAL BOTTLE COVER
- 7 UNDER MOUNT DUAL BASIN DEEP KITCHEN SINK
- 8 RANGE HOOD WITH LIGHT
- 9 AM/FM RADIO WITH CD AND DVD PLAYER
- 10 DIGITAL MICROWAVE

- 11 3 BURNER RANGE IPO 3 BURNER COOKTOP
- 12 OUTSIDE MARINE GRADE SPEAKERS (2)
- 13 FRONT DIAMOND PLATE
- 14 LED INTERIOR LIGHTING
- 15 SPARE TIRE AND COVER
- 16 REAR VISION CAMERA PREP

- 17 SPORT WHEEL PACKAGE
- 18 PLEATED NIGHT SHADES IN LIVING ROOM

CATALINA
SBX

CATALINA SUPERIOR BENEFITS



AIR TIGHT

Seal-Tech Test. We check ALL of our coaches for water leaks by pressurizing the unit and then using a Seal-Tech spray on every part of the unit to identify any problem areas. (We find the problem areas, so you don't have to.)



CABINETRY

All of our craftsman are thoroughly trained to use a framing table with jigs and clamps. This ensures that the cabinets are built to extremely tight tolerances for tight and secure cabinetry that will last for years. This method requires real wood styles, not MDF.



ELECTRICAL TESTING

A thorough electrical check makes sure that all electrical components are in working order, and that no electrical connections have been compromised during construction.



FLOORING

The floor is the base and key component of your RV. Therefore, we refuse to build anything but the best. Beginning with building the frame on 12"-16" centers, and bolting as well as gluing the 5/8" tongue and groove plywood, our methods and materials set us apart from the competition.



COUNTERTOPS

Drop edge Thermofoil countertop Benefits: **Pull Test** - it pulls at 450-500 PSI, it will pull the core apart before the Thermofoil gives. **Cold Cracks** - will not cold crack or pull out like a T-mold Edge or Self-Edge. **Moisture Exposure** - it will withstand moisture better than T-mold Edge or Self-Edge because it is sealed so that no water can penetrate.



SAFETY

A pressurized LP line test ensures that your unit is safe and all LP gas components are in working order.



HOT WATER

Our standard 6 gallon gas/electric DSI water heater allows you to fire up your water heater quickly and easily from inside your Catalina. It also features a great quick recovery feature which allows you to heat up to 16.2 gallons of hot water per hour. So whether you are washing the dishes or taking a shower, you'll always have plenty of hot water.



SUPERIOR AIR FLOW

Our full radius smooth metal front end creates a more aerodynamic unit providing:

- BETTER AIRFLOW
- IMPROVED FUEL COSTS
- BETTER TOWABILITY
- EASY TO CLEAN

CATALINA STANDARDS AND OPTIONS

EXTERIOR STANDARD FEATURES

- CAMBERED STRUCTURAL STEEL I-BEAM FRAME (WITH FULL WIDTH OUT RIGGERS)
- 3/8" FULLY DECKED WALK-ON ROOF
- ONE-PIECE SEAMLESS ROOF MEMBRANE
- RADIUS ENTRY STEPS
- 5/8" TONGUE & GROOVE PLYWOOD FLOOR DECKING
- R-7 FIBERGLASS INSULATION IN SIDEWALLS, ROOF & FLOOR
- G-20 TINTED WINDOWS
- RAIN GUTTERS WITH EXTENDED MOLDED DOWNSPOUTS
- PLATINUM .024" ALUMINUM EXTERIOR SKIN WITH .030 SKIRT METAL
- PAINTED BUMPER WITH DRAIN HOSE CARRIER AND END CAPS
- RADIUS-CORNERED FIBERGLASS ENTRANCE DOOR
- ROTO-CAST HOLDING TANKS
- FLUSH MOUNT BAGGAGE DOORS THAT ARE LOCKABLE AND RADIUS CORNERED
- POLISHED ALUMINUM FENDER SKIRTS
- SELF-ADJUSTING BRAKES
- 110V G.F.C.I. PROTECTED EXTERIOR RECEPTACLE
- 30-AMP ELECTRICAL SERVICE WITH DELUXE 110V 45-AMP POWER CONVERTER
- CITY WATER HOOK-UP
- FULL SIZE CAMP KITCHEN (321BHDS CK)

INTERIOR STANDARD FEATURES

- SCREWED CABINET CONSTRUCTION WITH POCKET BORED SOLID LUMBER CORE STILES
- GRACE CHERRY STAINED WOOD CABINETS
- CONGOLEUM WOOD PLANK LINOLEUM FLOORING
- 35K BTU AUTO-IGNITION FURNACE WITH WALL THERMOSTAT
- 12V DEMAND WATER PUMP
- SYSTEMS MONITOR PANEL
- RADIUS CORNER INTERIOR WALLS (WHERE APPLICABLE)
- RESIDENTIAL IN-FLOOR DUCTED HEAT
- 81" LIVING ROOM CEILING HEIGHT (78" 231RB, 261BH)
- CABLE/TV HOOK-UP IN FRONT BEDROOM
- SOLID MASTER BEDROOM DOORS (OPTIONAL ON 231RB, 261BH)
- UNDER-BED STORAGE
- 2 SHIRT CLOSETS WITH MIRRORS
- NIGHT STANDS WITH RECEPES
- DECORATIVE GLASS IN LIVING ROOM CABINETS

- JACK KNIFE CONVERTIBLE SOFA WITH PILLOWS
- HARD VALANCE WINDOW TREATMENT
- DROP EDGE THERMOFOIL COUNTERTOP
- GAS/ELECTRIC DOUBLE DOOR REFER WITH REVERSIBLE INSERT
- RESIDENTIAL HIGH RISE FAUCET
- EASY-VIEW EXTRA LARGE PICTURE WINDOW AT DINETTE
- SILVERWARE DRAWER
- LARGE DINETTE TABLETOP WITH MARINE GRADE PEDESTAL
- SHOWER CURTAIN WITH CURVED SHOWER TRACK
- ABS TUB AND SHOWER SURROUND
- RADIUS SHOWER WITH GLASS DOORS (231RB, 251RLS, 261RKS, 281RKS)
- MARINE TOILET WITH FOOT FLUSH
- FULL SIZE MEDICINE CABINET W/ MIRROR

ADDITIONAL OPTIONS

- HEATED AND ENCLOSED UNDERBELLY (N/A 231RB, 261BH)
- 15K BTU DUCTED A/C IPO 13.5K BTU A/C
- BED COMFORTER
- 3 DECOR OPTIONS MOCHA, PEPPERCORN, TRUFFLE
- 50 AMP SERVICE WITH 2ND A/C PREP (321BHDS CK ONLY)
- 30 LB. LP BOTTLES WITH COVER

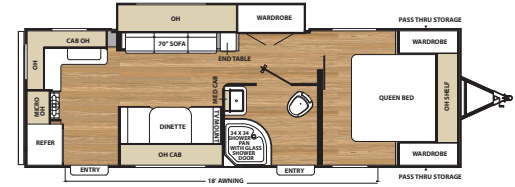


SBX CUSTOMER VALUE PACKAGE

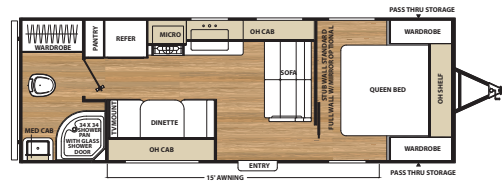
- 13,500 BTU DUCTED A/C
- POWER AWNING WITH LED LIGHT
- 6 GALLON GAS/ELECTRIC DSI WATER HEATER
- AM/FM RADIO WITH CD AND DVD PLAYER
- PLEATED NIGHT SHADES IN LIVING ROOM
- LED INTERIOR LIGHTING
- EXTERIOR MARINE GRADE SPEAKERS(2)
- REAR VISION CAMERA PREP
- UNDER MOUNT DUAL DEEP BASIN KITCHEN SINK
- RANGE WITH OVEN IPO 3 BURNER COOKTOP
- RANGE HOOD
- MICROWAVE
- SKYLIGHT ABOVE TUB/SHOWER
- SPORT WHEEL PACKAGE
- SPARE TIRE AND COVER
- STABILIZER JACKS(4)
- WATER HEATER BY-PASS WINTERIZATION KIT
- FRONT DIAMOND PLATE
- SPORT WHEEL PACKAGE



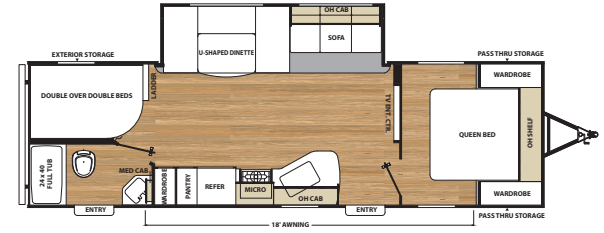
CATALINA SBX FLOORPLANS



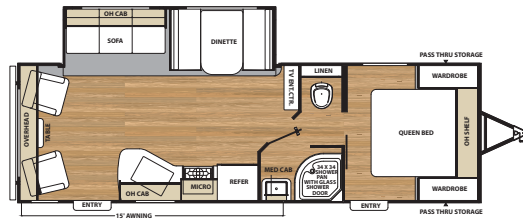
261RKS



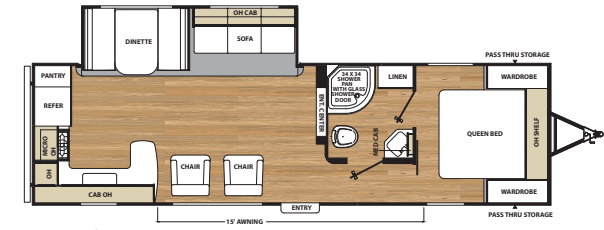
231RB



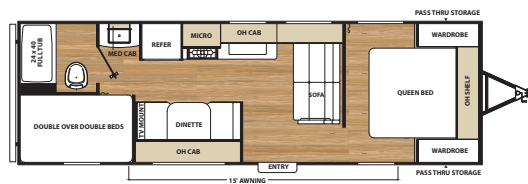
281DDS



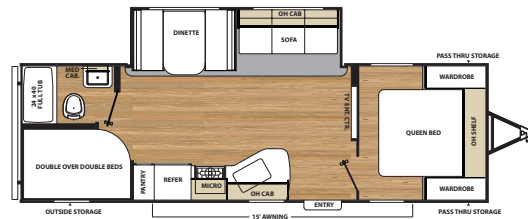
251RLS



281RKS



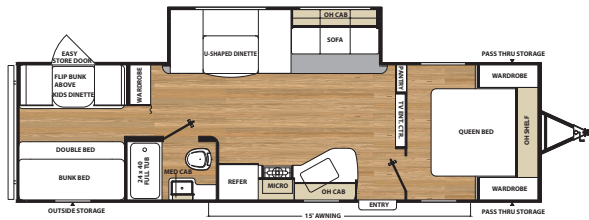
261BH



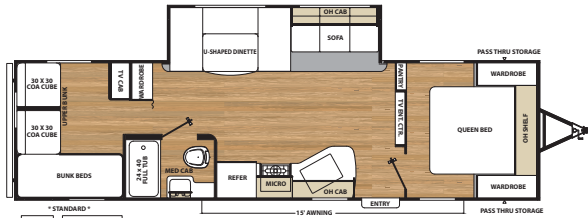
261BHS

CATALINA SBX SPECIFICATIONS

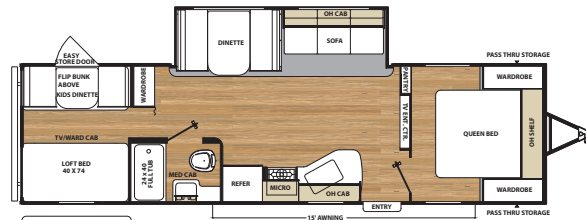
MODEL	231RB	251RLS	261BH
UVW	4,556	6,112	4,748
Carrying Capacity	2444	1,558	2,252
GVWR	7,000	7,700	7,000
Hitch Weight	552	718	541
Exterior Height (with A/C)	10'7"	11'1"	10'7"
Fresh Water Capacity (gal.)	46	46	46
Grey Water Capacity (gal.)	40	70	40
Waste Water Capacity (gal.)	30	30	30
Awning Length	15'	15'	15'
Wheel Size	14"	15"	14"
Exterior Length	27'5"	29'10"	29'3"
Exterior Width	96"	96"	96"
Interior Height (Coach)	81"	81"	81"
Axles	3500 LBS	3500 LBS	3500 LBS



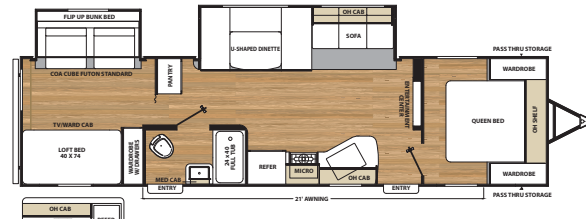
291QBS



291QBCK



301BHS CK



321BHDS CK

GVWR (Gross Vehicle Weight Rating) - is the maximum permissible weight of the unit when fully loaded. It includes all weights, inclusive of all fluids, cargo, optional equipment and accessories. For safety and product performance do NOT exceed the GVWR.

GAWR (Gross Axle Weight Rating) - is the maximum permissible weight, including cargo, fluids, optional equipment and accessories that can be safely supported by a combination of all axles.

UVW (Unloaded Vehicle Weight)* - is the typical weight of the unit as manufactured at the factory. It includes all weight at the unit's axle(s) and tongue or pin and LP Gas. The UVW does not include cargo, fresh potable water, additional optional equipment or dealer installed accessories.

*Estimated Average based on standard build optional equipment.

CCC (Cargo Carrying Capacity)** - is the amount of weight available for fresh potable water, cargo, additional optional equipment and accessories. CCC is equal to GVWR minus UVW. Available CCC should accommodate fresh potable water (8.3 lbs per gallon). Before filling the fresh water tank, empty the black and gray tanks to provide for more cargo capacity.

** Estimated average based on standard build optional equipment

Each Forest River RV is weighed at the manufacturing facility prior to shipping. A label identifying the unloaded vehicle weight of the actual unit and the cargo carrying capacity is applied to every Forest River RV prior to leaving our facilities. The load capacity of your unit is designated by weight, not by volume, so you cannot necessarily use all available space when loading your unit.

261BHS	261RKS	281DDS	281RKS	291QBCK	291QBS	301BHSCCK	321BHDSCK
6,198	5,502	6,169	6,681	6,528	6,553	6,656	7,750
1,502	1,998	1,431	2,519	2,972	2,447	2,344	1,750
7,700	7,500	7,600	9,200	9,500	9,000	9,000	9,500
738	690	688-	703	940	850	710	790
11'1"	10'7"	11'1"	11'1"	11'1"	11'1"	11'1"	11'1"
46	46	46	46	46	46	46	46
40	40	40	70	40	40	70	70
30	30	30	30	30	30	30	30
15'	18'	18'	15'	18'	15'	15'	21'
15"	14"	15"	15"	15"	15"	15"	15"
30'3"	28'4"	31'7"	32'6"	33'5"	35'5"	33'5"	35'10"
96"	96"	96"	96"	96"	96"	96"	96"
81"	81"	81"	81"	81"	81"	81"	81"
3500 LBS	3500 LBS	3500 LBS	4400 LBS	4400 LBS	4400 LBS	4400 LBS	4400 LBS



FREE ONE YEAR MEMBERSHIP



Big benefits for new owners

Coachmen is proud to sponsor the largest manufacturer sponsored camping club in North America ... Coachmen Owners' Association (COA). COA provides a broad breadth of value propositions for our owners including: planned trips/ tours and rallies at bulk rate discounts, free trip routing, free campground directory, free Easy RVing magazine, theme park discounts, fuel discounts, mail forwarding, a dedicated COA web site, local and state club activities and Caravan Chapter membership opportunities. Most importantly, COA enhances the Coachmen ownership and RV lifestyle experience.

Every new Coachmen RV buyer is eligible for a 1 Year FREE membership in the Coachmen Owners' Association. It all adds up to an easy ownership experience!

Travel Easy™ Roadside Assistance

RVing is easier with Coachmen's Travel Easy™ Roadside Assistance provided FREE the first year of ownership to those who purchase a New Coachmen RV. Administered by Coach-Net, this service provides you with 24/7 operational, technical and emergency road service coverage. Also included is towing, fuel delivery, jump starts, lockout service, tire changes, mobile mechanic and unlimited technical assistance. Anywhere. Anytime. Travel Easy™ is the security of knowing that help is an easy phone call away.



All information contained in this brochure is believed to be accurate at the time of publication. However, during the model year, it may be necessary to make revisions and Forest River, Inc., reserves the right to make all such changes without notice, including prices, colors, materials, equipment and specifications as well as the addition of new models and the discontinuance of models shown in this brochure. Therefore, please consult with your Forest River, Inc., dealer and confirm the existence of any materials, design or specifications that are material to your purchase decision.

To learn more about Coachmen RV and our products and see how Coachmen is leading the great outdoors, visit www.coachmenrv.com



Forest River, Inc. encourages our customers to purchase their Forest River products from a local dealership whenever possible for the following reasons:

- 1) Forest River, Inc. dealers are independently owned and operated businesses so priority service and scheduling is at their discretion and is often provided to customers that purchased their unit at that dealership.
- 2) Purchasing locally allows customers to establish meaningful relationships with a dealer, enhancing the RV experience through assistance with product questions, user tips or RV regulations for your state or country, and much more!
- 3) Canadian customers must meet requirements to bring an RV purchased out of the country to their home. These requirements may involve additional inspections and certifications, taxes and fees. Your local Canadian Dealer is a professional at meeting these requirements.
- 4) Scheduling timely warranty repairs and adjustments through a local dealership provides far greater flexibility and convenience to you, the customer!

It is the goal of Forest River, Inc. that all of our RV owners fully enjoy the RV experience and that customer satisfaction meets or exceeds their expectations!



CATALINA SBX



Learn More
Scan this barcode using a QR Reader on your smart phone to learn more about Forest River.



A Berkshire Hathaway company.



YOUR CATALINA DEALER