

LIVE. LANCE. LIFE.



LIVE.

Because the path before you has yet to be traveled. It smells of fresh air, pine trees and an open fire. It leads to a place characterized less by how you got there and more by moments shared and the memories made.

LANCE.

Has been treading that path for over 50 years with an unparalleled dedication to quality and attention to detail. Privately owned and forged from humble Southern California roots; our journey begins with an industry leading CNC computer designed and cut manufacturing process, complemented by a devotion to utilizing only the most advanced supplies and materials.

LIFE.

Is about searching out all this world has to offer. It can lead you to mountaintops, desert plains or coastal shores. It's about not settling at a desk in a town surrounded by concrete, or settling for the constraints of city lights.

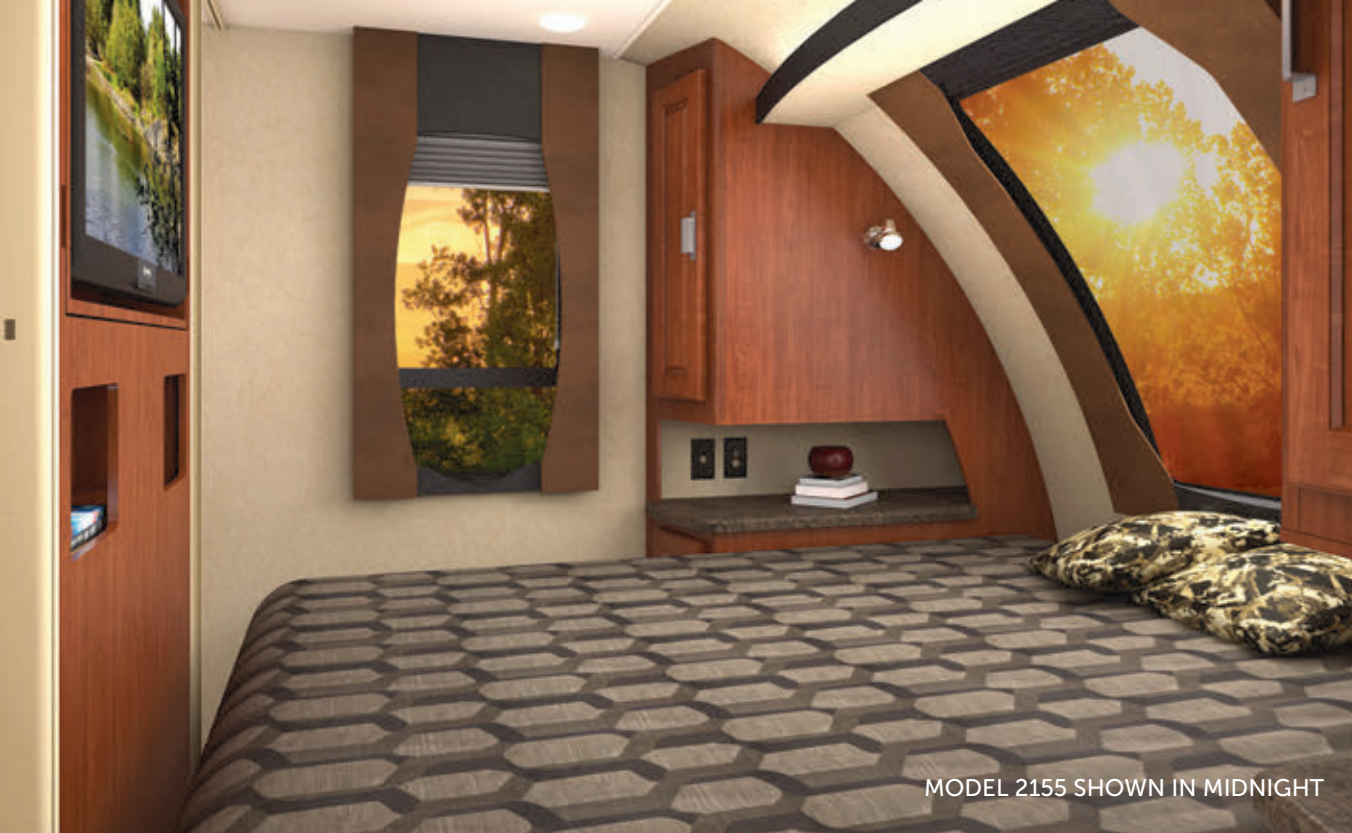
...Don't Settle.







MODEL 2155 SHOWN IN ROADSTER



MODEL 2155 SHOWN IN MIDNIGHT

THE LANCE LOOK

No two Lance owners are alike and neither are our completely redesigned decor packages. Personalize your Lance by selecting from one of three tasteful interiors, assembled by an interior design team. Form meets function and your personal style in the refined Roadster, laid-back Passage and edgy Midnight fabric combinations. Featuring stainless appliances; beautiful wood cabinetry complete with residential hardware, spacious sinks and easy to clean laminate flooring.



MODEL 2285 SHOWN IN ROADSTER



MODEL 2185



MODEL 1475 SHOWN IN MIDNIGHT



FIT & FINISH

The perfect balance of sensible luxury, classic style and tested durability. Offering floor plan choices with versatile appointments, outstanding comfort and unmatched quality in the details. Each model is meticulously designed to meet the common sense needs of a variety of campers and their tow vehicles.



MODEL 1995 SHOWN IN PASSAGE

EXTERIOR STYLING

Lance design language delivers a tastefully innovative edge to the tired box on wheels. The telltale curve of its aerodynamic triple propane tank housing, TPO rock guard and sky view window blend into exciting graphics wrapping into an integrated rear cap that leaves preconceived notions of trailer design in its dust.



KEEPING YOU AND YOUR ACCESSORIES CHARGED

On or off the grid, Lance understands the condition of your batteries is critical to the performance and enjoyment of your camper. The ability to properly charge and maintain a charge is a must. The following are key Lance features that ensure maximum battery performance.

- A. 12v/USB Charger for Phones/CPAP Machines/Inverters
- B. Dual Lockable Battery Compartments
- C. 95W Solar Panel (optional)

- D. Built in Charger in the Converter
- E. Wired to Charge from both Tow Vehicle and Shore Power
- F. Solar Panel Charge Monitor (optional)

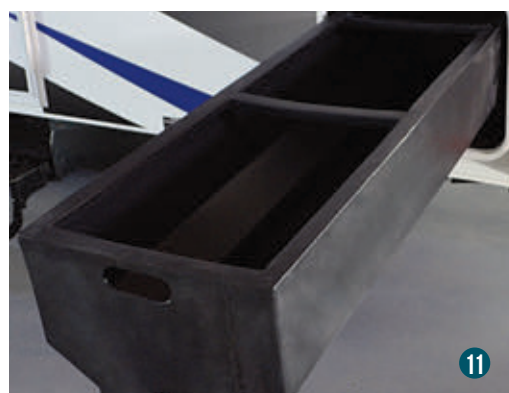


STANDARD AND OPTIONAL FEATURES

1. Integrated TPO Front Gravel Guard w/Hitch Light and Tri-Five Propane Tanks w/Aerodynamic Cover
2. Pull Out Dinette Storage Drawers
3. Lance Exclusive Bed Maid System
4. Keyless Entry w/Key Fob
5. Crowned Walk On Roof
6. Exterior Kitchen – 2295 Only
7. Backup Camera
8. Power Side Awning w/LED Light Bar
9. Aluminum Wheels w/Radial Tires
10. LED Lighting Throughout
11. Pull Out Front Storage Tray
12. Electric Stabilizer Jacks
13. Magnetic Exterior Latches
14. Electric Tongue Jack
15. Integrated Aerodynamic Rear “Eye Brow” Cap
16. Exterior Storage Slam Latch w/Corresponding Lock & Key

ADDITIONAL FEATURES:

Visit LanceCamper.com for complete product information including features, specifications, images and dealer locations. Be sure to download the Lance Camper app available through the App Store, Windows Store and Google Play.



ADDITIONAL STANDARD & OPTIONAL FEATURES



4" Rear Bumper & 1 1/4" Receiver Accommodates Bike Rack and Other Accessories



Available Chassis Lift Kit Provides an Additional 2 5/8" of Clearance



Convertible Sofa Bed



Tri-Five LP Tanks

LANCE LOOK DECORS



ROADSTER



MIDNIGHT



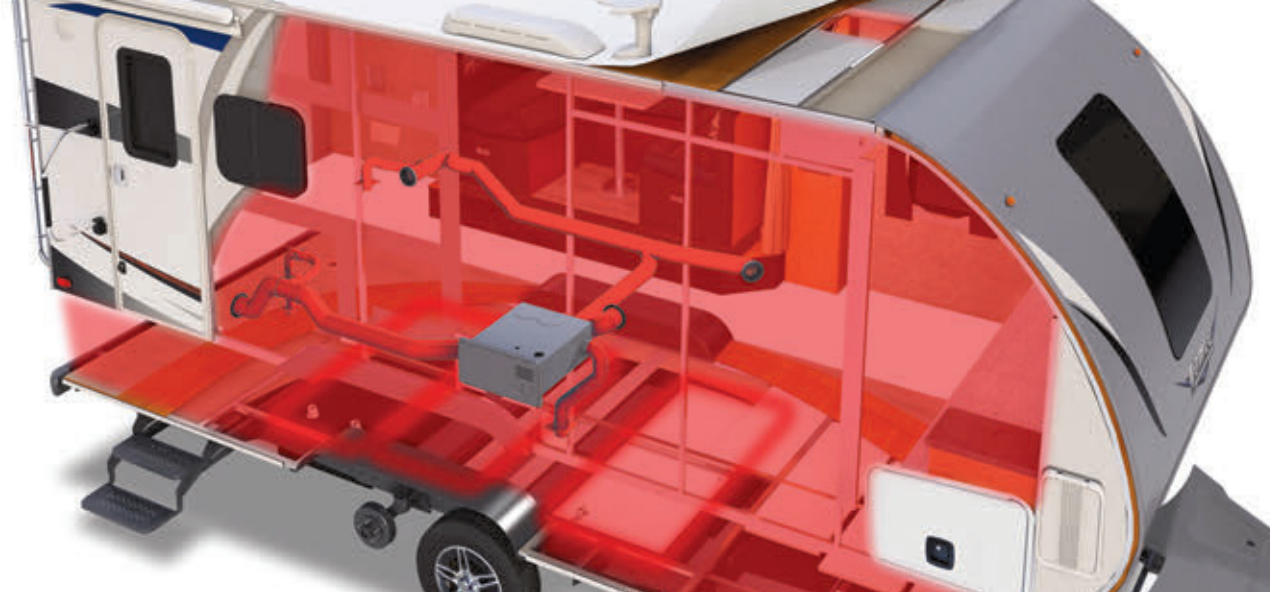
PASSAGE



LANCE OWNERS OF AMERICA (LOA)

The Lance Owners of America is an organization of people that all share some common interests. We all love traveling and camping in our Lance Truck Campers, Travel Trailers and Toy Haulers. We would like to invite you to explore our website and consider becoming a member of the Lance Owners of America. Our goal is to provide the Lance Owner community with valuable information and events to help make your Lance camping experience a great one. LanceOwners.org

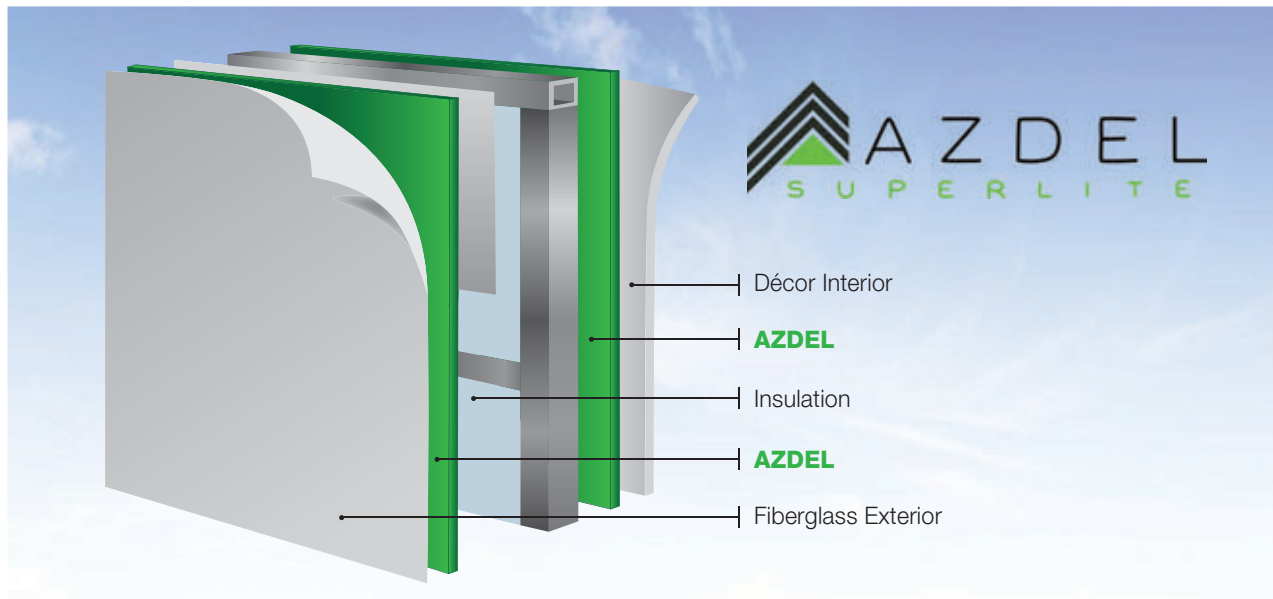




4 SEASONS CERTIFIED ALL WEATHER PACKAGE (OPTIONAL)

A true four season RV. When your Lance is specially equipped with the 4 Seasons Certified All Weather Package you'll be enjoying your RV all year long. In addition to standard dual-pane windows, block foam insulation and advanced ducted heating; this option includes a water heater bypass/winterizing valve, insulated hatch covers and insulated holding tanks.

The Tri-Five LP Tank Option gives you an additional 5 gallons of propane for a total of 15 gallons of propane capacity to power your LP appliances no matter what the season.



SPECIFICATIONS, STANDARDS & OPTIONS

	1475	1575	1685	1985	1995	2155	2185	2285	2295
Floor Length	14' 10"	15' 9"	16' 6"	18' 9"	19' 2"	21' 2"	21' 2"	22' 6"	22' 6"
Overall Length	19' 8"	20' 5"	21'	23' 3"	23' 8"	25' 8"	25' 8"	27'	27'
Overall Length w/Optional Ladder	N/A	N/A	21' 5"	23' 8"	24' 1"	26' 1"	26' 1"	27' 5"	27' 5"
Width (Exterior)	84 3/8"	84 3/8"	96 3/8"	96 3/8"	96 3/8"	96 3/8"	96 3/8"	96 3/8"	96 3/8"
Height (Exterior) w/Optional 13.5 A/C	9' 10"	9' 10"	10' 1"	10' 1"	10' 1"	10' 2"	10' 2"	10' 2"	10' 2"
Height (Interior)	78"	78"	78"	78"	78"	78"	78"	78"	78"
Dry Weight*	2495	2655	3710	3925	3950	4600	4210	4585	4460
Hitch Weight*	240	225	435	495	330	675	720	615	635
Cargo Capacity*	1205	1045	1790	1775	1750	1400	1790	1415	1540
GVWR	3700	3700	5500	5700	5700	6000	6000	6000	6000
Fresh Water, Gallons	26	26	45	45	45	45	45	45	45
Grey Water, Gallons	26	26	45	45	45	45	45	2/45	45
Black Water, Gallons	22	25	45	45	45	45	45	45	45
Propane Capacity, Tanks/Gallons	1/5	1/5	2/5	2/5	2/5	2/5	2/5	2/5	2/5
Sleeping Capacity, Min/Opt Max	2/3	4	4/5	4	4	4	7	6	4
Convertible Dinette Bed		46" x 78"	54" x 78"	54" x 78"	54" x 78"	54" x 78"	54" x 78"	54" x 78"	54" x 78"

* Estimates



MODEL 1475



MODEL 1575



MODEL 1685

EXTERIOR

	1475	1575	1685	1985	1995	2155	2185	2285	2295
Laminated Fiberglass Bonded Exterior W/Azdel Substrate	•	•	•	•	•	•	•	•	•
Manual Tongue Jack	•	•	•	•	•	•	•	•	•
Electric Stabilizer Jacks			0	0	0	0	0	0	0
Electric Tongue Jack W/Drop Leg	0	0	0	0	0	0	0	0	0
Aluminum Wheels W/Radial Tires	•	•	•	•	•	•	•	•	•
Spare Tire Carrier	•	•	•	•	•	•	•	•	•
Spare Tire	0	0	0	0	0	0	0	0	0
Single Step	•								
Single Aluminum Step		•							
Double Step			•	•	•	•	•/2	•/2	•
Aerodynamic Front Section Profile	•	•	•	•	•	•	•	•	•
Fiberglass Front Wrap W/Formatted TPO Lower Gravel Guard W/LP Tank Cover			•	•	•	•	•	•	•
Formed Jewel LED Docking Lights			•	•	•	•	•	•	•
Diamond Plate Lower Gravel Guard	•	•							
Rear TPO Eyebrow W/Formatted Vertical Side Pillars and Integrated LED Lighting			•	•	•	•	•	•	•
Frameless Full View Dual Pane Tinted Windows	•	•	•	•	•	•	•	•	•
Radius Acrylic Tinted Thermopane Euro Windows		•							
Large Curved Tinted Front Picture Window (Laminated)			•	•	•	•	•	•	•
Acrylic Tinted Thermopane Front Euro Window	•	•	•						
Slide-Out End Wall Windows									
Ladder			0	0	0	0	0	0	0
LED Tail Lights	•	•	•	•	•	•	•	•	•
LED License Plate Light W/Holder	•	•	•	•	•	•	•	•	•
Radius Cornered Storage Compartment Doors W/Magnetic Latches	•	•	•	•	•	•	•	•	•
Large Pass Through Luggage Door w/Slam Latch			•	•	•	•	•	•	•
Radius Entry Door W/Window	•	•	•	•	•	•	•	•	•
Keyless Entry W/Key Fob	0	0	0	0	0	0	0	0	0

	1475	1575	1685	1985	1995	2155	2185	2285	2295
Roof Vent in Bed Area	•	•	•	•	•	•	•	•	•
Roof Vent in Living Area	•	•	•	•	•	•	•	•	•
Skylight in Galley/Dinette Area	•	•	•	•	•	•	•	•	•
Exterior Wash Station	•	•	•	•	•	•	•	•	•
Exterior Kitchen									•
Exterior Propane Connection	•	•	•	•	•	•	•	•	•
Swing-Out Entry Assist Handle	0	0	•	•	•	•/2	•/2	•	•
Pull-Out Storage Tray	0	0	0	0	0	0	0	0	0
Awning Slide-Out Cover		0	0	0	0	0	0	0	0
Electric Awning 10' 4" W/LED Lighting	0								
Electric Awning 12' 0" W/LED Lighting		0							
Electric Awning 13' 0" W/LED Lighting			0						
Electric Awning 16' 0" W/LED Lighting				0	0				
Electric Awning 18' 0" W/LED Lighting						0	0		
Electric Awning 19' 0" W/LED Lighting								0	0
Wheel Lug Wrench	•	•	•	•	•	•	•	•	•
Lift Kit (2.5/8")			0	0	0	0	0	0	0
Back-Up Camera	0	0	0	0	0	0	0	0	0

CONSTRUCTION/INSULATION

One-Piece Roof	•	•	•	•	•	•	•	•	•
One-Piece Fiberglass Roof	•	•							
Laminated, Insulated Floor and Ceiling	•	•	•	•	•	•	•	•	•
Block Foam Insulation Throughout	•	•	•	•	•	•	•	•	•
Radius Roof Design			•	•	•	•	•	•	•
Aluminum Framed Sidewalls	•	•	•	•	•	•	•	•	•
Aluminum Framed Floor and Ceiling	•	•	•	•	•	•	•	•	•
Azdel Interior Panel Walls	•	•	•	•	•	•	•	•	•
All Weather Package			0	0	0	0	0	0	0

All Weather Package-Includes Enclosed, Insulated & Heated Holding Tanks, Insulated Hatch Covers, Water Heater Bypass & Winterizing Valve

• = Standard Option 0 = Optional Feature

INTERIOR/DECOR

	1475	1575	1685	1985	1995	2155	2185	2285	2295
Interior - Midnight	0	0	0	0	0	0	0	0	0
Interior - Passage	0	0	0	0	0	0	0	0	0
Interior - Roadster	0	0	0	0	0	0	0	0	0
Sofa Bed W/Kick Out Foot Rests									•
Swivel Rockers		•/2							0/2
Surf-X Suedo Solid Surface Lightweight Countertops & Tables	•	•	•	•	•	•	•	•	•
Hardwood Framed Flat Panel Cabinet Doors	•	•	•	•	•	•	•	•	•
Hardwood Raised Panel Cabinet Doors (O'Head Cabinets)				•	•	•	•	•	•
Decorative Pull Cabinet Hardware	•	•	•	•	•	•	•	•	•
Self Closing Drawer Guides	•	•	•	•	•	•	•	•	•
Lite-Ply Cabinet Construction	•	•	•	•	•	•	•	•	•
Hidden Trash Can Compartment									•
Valance Boxes	•	•	•	•	•	•	•	•	•
Valances Attached to Interior Window Treatment		•							
Mini-Blinds in Galley	•	•	•	•	•	•	•	•	•
Mini-Blinds in Living Area	•	•	•	•	•	•	•	•	•
Day/Night Shade in Dinette	•	•	•	•	•	•	•	•	•
Mini-Blinds in Bedroom	•	•	•	•	•	•	•	•	•
Combo Screen/Shade on Windows		•							
Day/Night Shades for Living Area and Bedroom	0	0	0	0	0	0	0	0	0
Wall Clock	•	•	•	•	•	•	•	•	•
Key Hanger	•	•	•	•	•	•	•	•	•

GALLEY/APPLIANCES & EQUIPMENT

Stainless Steel 3-Burner Range	•	•	•	•	•	•	•	•	•
Stainless Steel 3-Burner High Output Range W/Oven & Cvr - 21" Oven	0	0	0	0	0	0	0	0	0
Stainless Steel Microwave Oven	0	0	0	0	0	0	0	0	0
Refrigerator (Cu Ft) 2-Way Double Door			6	6	6	6	6	6	6
Refrigerator (Cu Ft) 3-Way Double Door	5	5							



MODEL 1985



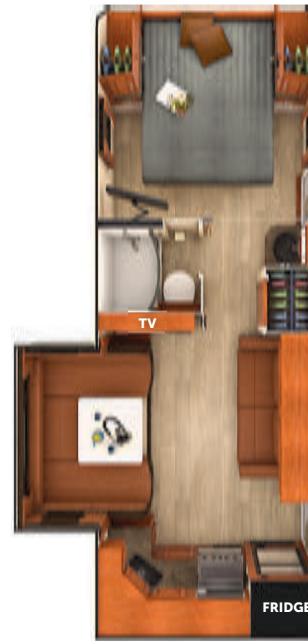
MODEL 1995



MODEL 2155



MODEL 2185



MODEL 2285



MODEL 2295

	1475	1575	1685	1985	1995	2155	2185	2285	2295
Upgrade Stainless Steel Refrigerator Door Panels			•	•	•	•	•	•	•
Furnace BTU	18M	18M	25M	25M	25M	25M	25M	25M	25M
LP Tank Cover	•	•	•	•	•	•	•	•	•
Tri-Five Propane Tank (Third 5 Gal. Tank W/Holddown)			0	0	0	0	0	0	0
Stainless Steel Range Hood W/Light & Fan	•	•	•	•	•	•	•	•	•
Backsplash	•	•	•	•	•	•	•	•	•
Galley Overhead Accent Puck LED Lighting	•	•	•	•	•	•	•	•	•
Folding Galley Extension				•					
Single Sink (Round)	•	•							
Residential Undermount Large Single Sink			•	•	•	•	•	•	•
Pull-Out Sprayer Galley Faucet	•	•	•	•	•	•	•	•	•
Sink Cover	•	•	•	•	•	•	•	•	•
Magazine and Spice Racks - Wood			•	•	•	•	•	•	•

FRESH AND WASTE WATER SYSTEMS

Water Pump W/In-Line Filter	•	•	•	•	•	•	•	•	•
Tankless Water Heater	0	•	0	0	0	0	0	0	0
Water Heater Gas/Electric/DSI	•	0	•	•	•	•	•	•	•
Winterizing Valve		•							
Water Heater Bypass and Winterizing Valve	0								
Enclosed, Insulated and Heated Fresh Water Tank	•	•	•	•	•	•	•	•	•

BATHROOM

Porcelain Toilet - Foot Pedal	•	•	•	•	•	•	•	•	•
Plastic Toilet - Foot Pedal	•	•							
Black Tank Flush	•	•	•	•	•	•	•	•	•
Tub		•							
Shower Pan	•	•	•	•	•	•	•	•	•
Medicine Cabinet W/Mirror Door	•	•	•	•	•	•	•	•	•
Mirror on Bath Door	•	•	•	•	•	•	•	•	•
Folding Lavy Extension						•	•		
Towel Rod on Wall		•	•	•	•	•	•		

Towel Ring

Residential Undermount Oval Lavy Sink	•	•	•	•	•	•	•	•	•
Residential Radius "Soft" Shower Door Enclosure					•				
Residential Neo-Angle Shower Door Enclosure						•			
Shower Curtain W/Tieback	•	•	•		•				
Skylight - Dual Pane	•	•	•	•	•	•	•	•	•
Ducted Heat	•				•	•	•	•	•

DINETTE

Dinette W/Reversible Cushions			•	•	•	•	•	•	•
Roll-Out Storage Drawers W/Hardware Latches			•	•	•	•	•	•	•

BEDROOM

60" x 80" Deluxe Queen Innerspring Mattress	•	•	•	•	•	•	•	•	•
Bedsread W/Throw Pillows	•	•	•	•	•	•	•	•	•
Convertible Sofa/Queen Bed			0	0	0				
Bed-Maid	0	0	0	0	0	0	0	0	0
Overhead Cabinet Bunk 28" X 75"			•						
Fold-Up Bunk Beds 29" X 74"						•			
LED Reading Lights	•	•	•	•	•	•	•	•	•
LED Mood Lighting			•	•	•	•	•	•	•
Privacy Curtain			•	•	•	•	•	•	•
Privacy Divider Doors						•	•		
TV LED 28" (12 Volt)								0	

ELECTRICAL

Systems Monitor Panel	•	•	•	•	•	•	•	•	•
12V/USB Charging Port	•	•	•	•	•	•	•	•	•
Battery Condition Indicator - LED	•	•	•	•	•	•	•	•	•
55 Amp Converter/Loadcenter			•	•	•	•	•	•	•
45 Amp Converter/Loadcenter	•	•							
LED Interior Lighting - Ceiling	•	•	•	•	•	•	•	•	•

LED Interior Lighting - Under Overheads

Decorative LED Lighting - S/O Ceiling	•	•	•	•	•	•	•	•	•
Storage Compartment Lighting	•	•	•	•	•	•	•	•	•
Single Battery Rack	•	•							
Dual Locking Battery Compartments							•		
Dual Locking Battery Compartments W/Sliding Trays							•	•	•
Battery Disconnect - Manual	•	•	•	•	•	•	•	•	•
Wall Switched Lighting	•	•	•	•	•	•	•	•	•
LED Vanity Lighting Over Medicine Cabinet	•	•	•	•	•	•	•	•	•
Pre-Wired for Roof A/C	•	•	•	•	•	•	•	•	•
A/C - Coleman 9 Low Profile Wall Control	0	0	0	0	0	0	0	0	0
A/C - Coleman 13.5 Low Profile Wall Control	0	0	0	0	0	0	0	0	0
A/C - Coleman 15 Low Profile Wall Control	0	0	0	0	0	0	0	0	0
Wall Thermostat	•	•	•	•	•	•	•	•	•
Pre-Wired for Fantastic Vent	•	•	•	•	•	•	•	•	•
Fantastic Roof Vent	0	0	0	0	0	0	0	0	0
Power Roof Vent in Bath	•	•	•	•	•	•	•	•	•
Pre-Wired for TV Ant/Park/Sat Cable	•	•	•	•	•	•	•	•	•
TV Antenna HD	•	•	•	•	•	•	•	•	•
AM/FM/DVD/CD/USB Bluetooth Audio System W/App Control	•	•	•	•	•	•	•	•	•
TV 28" (12 Volt)	0	0	0		0				
TV 32" (12 Volt)							0	0	0
HDMI LCD/Satellite Receiver Receptacle Wall Plate	•	•	•	•	•	•	•	•	•
Fireplace								0	0
LED Patio Light - Switched	•	•	•	•	•	•	•	•	•
LED Hitch Light - Switched	•	•	•	•	•	•	•	•	•
Solar Panel Pre-wire	0	0	0	0	0	0	0	0	0
Solar Panel - 160 Watt	0	0	0	0	0	0	0	0	0
Exterior 120V Patio Outlet	•	•	•	•	•	•	•	•	•
Backup Camera W/Wireless Monitor	0	0	0	0	0	0	0	0	0

DESIGN AND CONSTRUCTION



A. The roof is made of energy-star rated material with vents that clamp in place, eliminating screws and potential leaks. Integrated rain gutters and drip spouts prevent the sides of your trailer from streaking.

B. Rigid block foam insulation yields maximum "R" value and promotes structural strength.

C. Interiors are constructed of Lite-Ply™ which Lance imports from Europe. This superior product is lighter, formaldehyde free and stronger. Providing both beauty and durability.

D. Keeping it all together are stainless steel fasteners. Unlike our competitors, this expensive hardware resists corrosion making for a lasting investment.

E. High gloss TPO lower front gravel guard with jewel LED lighting is both beautiful and resilient to the abuses of the road while protecting this section of the chassis. (Select Models)

F. All seals use an anti-wicking material to prevent moisture from transferring to the laminate walls.

G. Lance uses more expensive Azdel™ in place of Luan wood, virtually eliminating mold and mildew. It's also lighter and has a better "R" value for superior insulation.

H. Lance's aluminum framed superstructure provides for an extremely solid trailer that is also lightweight.

I. Heavy duty rubber torsion-bar suspension axles allow for independent articulation, providing a better towing experience off-road in addition to featuring EZ-lube bearings and self adjusting brakes for easy maintenance.

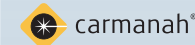
J. Engineered super lightweight, powder coated, tempered steel custom chassis Huck bolt construction eliminates weak and rust-prone welds.

K. 3D advanced CAD engineering creates precise plans that run CNC machinery. The result is that every part is perfect every time.

L. Slideout rooms use Schwintek™ hardware for smooth, dependable operation. Lighter in weight than other mechanisms, they're also smaller, allowing for more living space.

M. The slick, high gloss fiberglass exterior walls are laminated under intense pressure with heat-setting adhesives for years of trouble-free service

KEY SUPPLIER PARTNERS





EXCLUSIVE ROADSIDE ASSISTANCE

FREE with purchase of your new Lance! Get the safety and convenience you need when you're on the road. Your membership covers you, a spouse or significant other, and children age 24 or younger, licensed to drive your RV or other vehicles owned. Membership includes emergency roadside assistance and concierge service that you can use both on and off the road. For more information call 877.219.9641

2 YEAR
STRUCTURAL LIMITED
WARRANTY

12 YEAR
ROOF LIMITED
WARRANTY

Please see lancecamper.com/warranty for details.

2017 LANCE TRAVEL TRAILER BROCHURE ©2017 Lance Camper Mfg. Corp. (LCMC). All rights reserved. Lance, the Lance logomark, the Lance logomark with chevron, The Lance Look, Lance Custom Design, Bed-Maid, LanceLock, ultraDECKplus, ultraSTEPplus, Discover The Lance Difference, SkyView and other exclusive Lance product names, marks or designations are trademarks, service marks or registered trademarks of LCMC. All other marks are property of their respective owners. **All product data, graphics and photography, illustrations and/or renderings in this book were as accurate as possible at press time. Subsequent refinements during the model year may be evident in the actual product. LCMC reserves the right to change prices, colors, materials, equipment and specifications without notice — as well as to add, modify or discontinue models shown in promotion materials and/or on its websites.** All weights, fuel and liquid capacities are approximate and dimensions are nominal. It is that owner's sole responsibility to select the proper Lance camper model and support equipment appropriate to their truck without exceeding safe weight operating capacities. Your Factory Authorized Lance Dealer can advise you of the operating parameters for your particular configuration, and can confirm prices and product specifications material prior to making your purchase decision. See website for full warranty information. Brochure printed in the USA on FSM paper. 20M. 0816. Rev1.



TOWING & COMPATIBILITY

These are general guidelines to use when matching a trailer to your tow vehicle, assuming standard equipment on your trailer. Whether any travel trailer can be used with your vehicle and its capacities for carrying and/or towing is effected by how much optional equipment is added to the trailer, and the weight of passengers and all other items you carry in your tow vehicle and trailer.

Because we're unfamiliar with your tow vehicle, Lance makes no warranties or representation – expressed or implied – as to performance or reliability of your tow vehicle with a Lance trailer. For professional guidance, always consult with your Factory Authorized Lance Dealer. They're trained in properly calculating proper matches between tow vehicles and trailers.

3,500 POUND TOW RATING



Model: 1475, 1575

5,000 POUND TOW RATING



Models: 1475, 1575, 1685, 1985, 1995

6,000 POUND TOW RATING



Models: 1475, 1575, 1685, 1985, 1995, 2155, 2185, 2285, 2295



LANCECAMPER.COM

