

# ASPEN TRAIL

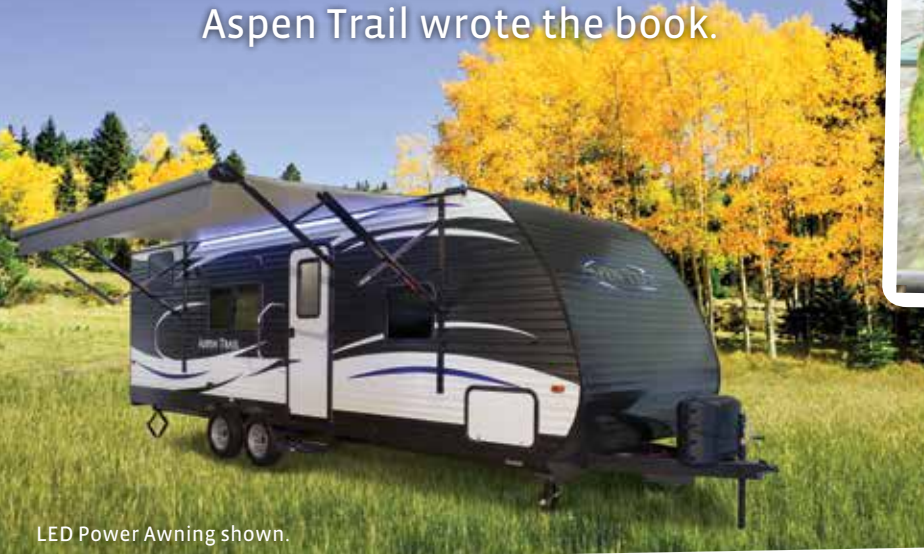


**LEGENDARY INNOVATION  
TRAILBLAZING VALUE**

# ASPEN TRAIL

## TRAILBLAZING VALUE

More conveniences and more standard features mean more trailblazing value. When it comes to more bang for the buck, Aspen Trail wrote the book.



LED Power Awning shown.



### EXPANDED SLIDE-ROOM SPACE

With 6 feet of height and flush-floor sliderooms, you'll enjoy more headroom than most other RVs.



ASPEN TRAIL 2750BHS | SANDALWOOD



## MAX HEADROOM

Our 82 inches of interior height make Aspen Trail's living areas more residential than ever.

ASPEN TRAIL 2750BHS | SANDALWOOD

## BATHROOM ACCENTS

Freshen up in your spacious bath as natural light shines through the convenient skylight.



ASPEN TRAIL 2750BHS

## KICKING IT UP A NOTCH

Say goodbye to low-quality, particleboard cabinetry, and say hello to real, hardwood, cabinet doors and drawer fronts. Aspen Trail cabinets are built stronger for more years of RVing enjoyment.



ASPEN TRAIL 2750BHS



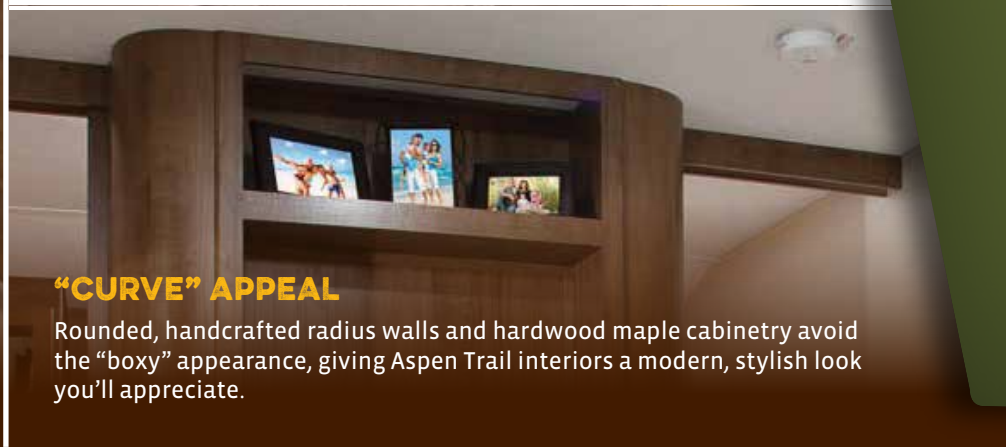
### THE BUNK HOUSE

Double-over-double bunk beds, a storage area and a pull curtain for privacy make the Aspen Trail's bunk room the perfect getaway place for the kids! (2750 model shown)



### STRETCH OUT

The 60" x 80" residential-sized queen bed is big enough to stretch out and relax after a long day of fun.



### "CURVE" APPEAL

Rounded, handcrafted radius walls and hardwood maple cabinetry avoid the "boxy" appearance, giving Aspen Trail interiors a modern, stylish look you'll appreciate.



# TRAILBLAZING VALUE

Inside and out, you'll find all sorts of extras in Aspen Trail. It's what sets us apart — and it's what we call "Trailblazing Value."

### MASTER CONTROL

Our sleek master control panel labels every switch and puts quick feature control at your fingertips.

### ENCLOSED UNDERBELLY

Our fully enclosed and heated underbelly offers four-season RVing and protects your investment from the elements, rodents and road debris.

### MEGA PASS-THROUGH STORAGE

We maximized the Aspen Trail's storage area by angling the walls of the space. More space means even more room to bring it all!





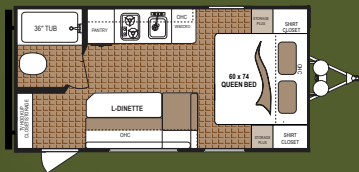
ASPEN TRAIL 1700BH | ADOBE



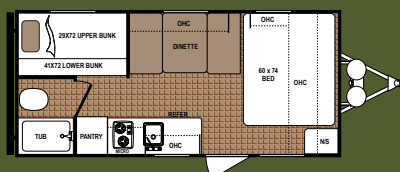
ASPEN TRAIL 1700BH | ADOBE

# ASPEN TRAIL MINI BIG COMFORT

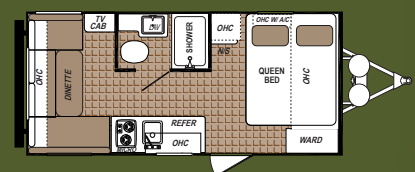
Even our "mini" floor plans are feature-rich, offering the ultimate in convenience, comfort and value



**ASPEN TRAIL | 1600RB**  
Ext. Length: 21' 5" Ext. Height: 8' 11"  
Average Shipping Weight: 3,142 Sleeps: 2-4



**ASPEN TRAIL | 1700BH**  
Ext. Length: 21' 5" Ext. Height: 8' 8"  
Average Shipping Weight: 3,322 Sleeps: 4-5



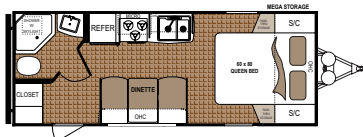
**ASPEN TRAIL | 1750RD**  
Ext. Length: 21' 5" Ext. Height: 8' 10"  
Average Shipping Weight: 3,169 Sleeps: 2-4

Aspen Trail Mini standards and options can be found at [www.dutchmen.com](http://www.dutchmen.com)

## ASPEN TRAIL SPECIFICATIONS

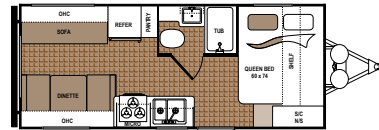
MODEL	DIMENSIONS	WEIGHTS (LBS.)			TANKS (GALS.)					
MODEL	FLOORPLAN	*EXTERIOR TRAVEL LENGTH	EXTERIOR WIDTH	EXTERIOR HEIGHT (WITH A/C)	**AVERAGE SHIPPING WEIGHT	DRY HITCH WEIGHT	CARGO CARRYING CAPACITY	***FRESH WATER CAPACITY	GREY WATER CAPACITY	BLACK WATER CAPACITY
Travel Trailers	1900RB	24' 8"	96"	10' 8"	4,107	493	3,493	52	42	42
	1930RDWE	22' 11"	96"	10' 8"	4,170	453	3,390	52	42	42
	2050QBWE	24' 10"	96"	10' 8"	4,181	460	3,180	52	42	42
	2340BH5	27' 4"	96"	11' 4"	5,641	609	1,959	52	42	42
	2390RKS	27' 2"	96"	11' 4"	5,544	776	2,086	52	42	42
	2460RLS	28' 3"	96"	11' 4"	5,514	552	2,086	52	42	42
	2480RBS	28' 9"	96"	11' 4"	5,842	660	3,838	52	42	42
	2710BH	28' 7"	96"	10' 7"	4,655	559	2,945	52	42	42
	2730RBS	31'	96"	11' 6"	6,824	821	2,745	52	78	42
	2750BH5	31' 4"	96"	11' 4"	6,288	669	3,392	52	42	42
	2790BH5	31' 11"	96"	11' 4"	6,497	650	3,183	52	84	42
	2810BH5	32' 2"	96"	11' 4"	6,297	819	3,383	52	42	42
	2860RLS	32' 6"	96"	11' 4"	6,450	724	3,230	52	42	42
	2870RKS	32' 8"	96"	11' 4"	6,512	941	3,168	52	84	42
	2890BH5	32' 11"	96"	11' 2"	6,482	778	3,364	52	42	42
	3010BHDS	35' 9"	96"	11' 7"	7,588	910	2,092	52	42	42
3100BH5	37' 6"	96"	11' 8"	8,562	1,027	2,614	52	78	42	
3150REDS	34'	96"	11' 5"	7,394	905	2,286	52	78	42	
3600QBDS	39' 9"	96"	11' 5"	8,010	1,042	3,166	52	78	42	
Minis	1600RB	21' 5"	96"	8' 11"	3,142	346	725	27	28	28
	1700BH	21' 5"	96"	8' 8"	3,322	452	651	27	28	28
	1750RD	21' 5"	96"	8' 10"	3,169	450	678	27	28	28

\*Length is defined as the distance from the centerline of hitch pin/coupler to rear bumper of trailer. \*\*Our weights represent how most units are built, inclusive of many commonly-ordered options. \*\*\*Fresh water capacity includes water heater capacity.



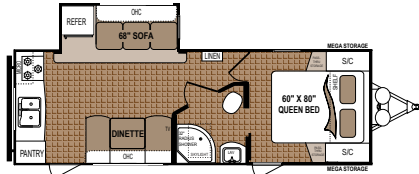
**ASPEN TRAIL | 1900RB**

Ext. Length: 24' 8" Ext. Height: 10' 8" Average Shipping Weight: 4,107 Sleeps: 2-3



**ASPEN TRAIL | 1930RDWE\***

Ext. Length: 22' 11" Ext. Height: 10' 8" Average Shipping Weight: 4,170 Sleeps: 3-4



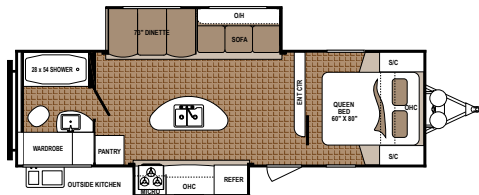
**ASPEN TRAIL | 2390RKS**

Ext. Length: 27' 2" Ext. Height: 11' 4" Average Shipping Weight: 5,544 Sleeps: 3-4



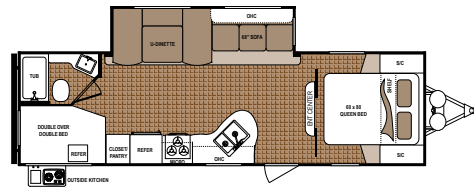
**ASPEN TRAIL | 2460RLS**

Ext. Length: 28' 3" Ext. Height: 11' 4" Average Shipping Weight: 5,514 Sleeps: 3-5



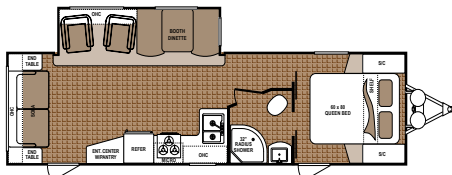
**ASPEN TRAIL | 2730RBS**

Ext. Length: 31' Ext. Height: 11' 6" Average Shipping Weight: 6,824 Sleeps: 3-4



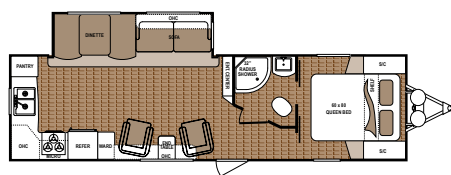
**ASPEN TRAIL | 2750BHS**

Ext. Length: 31' 4" Ext. Height: 11' 3" Average Shipping Weight: 6,288 Sleeps: 6-8



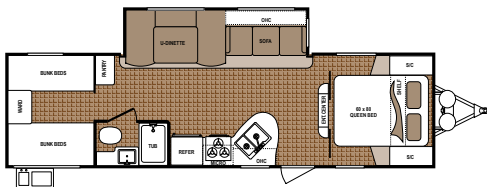
**ASPEN TRAIL 2860RLS**

Ext. Length: 32' 6" Ext. Height: 11' 3" Average Shipping Weight: 6,421 Sleeps: 4-5



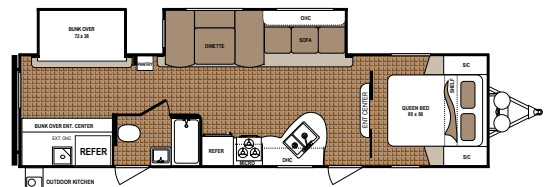
**ASPEN TRAIL 2870RKS**

Ext. Length: 32' 7" Ext. Height: 11' 3" Average Shipping Weight: 6,501 Sleeps: 4-5



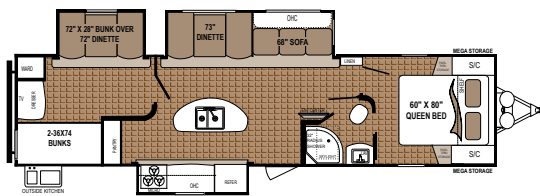
**ASPEN TRAIL | 2890BHS**

Ext. Length: 32' 11" Ext. Height: 11' 2" Average Shipping Weight: 6,482 Sleeps: 6-8



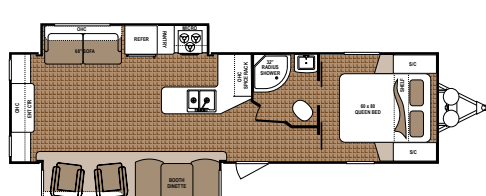
**ASPEN TRAIL | 3010BHDS**

Ext. Length: 35' 9" Ext. Height: 11' 7" Average Shipping Weight: 7,588 Sleeps: 6-8



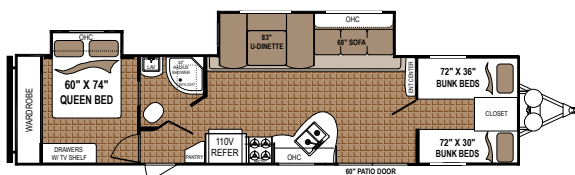
**ASPEN TRAIL | 3100BHS**

Ext. Length: 37' 6" Ext. Height: 11' 8" Average Shipping Weight: 8,562 Sleeps: 8



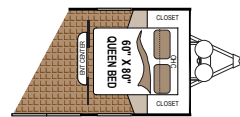
**ASPEN TRAIL | 3150REDS**

Ext. Length: 34' Ext. Height: 11' 5" Average Shipping Weight: 7,394 Sleeps: 4-6



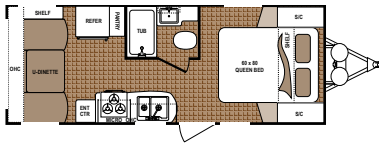
**ASPEN TRAIL | 3600QBDS**

Ext. Length: 39' 9" Ext. Height: 11' 5" Average Shipping Weight: 8,010 Sleeps: 8-10



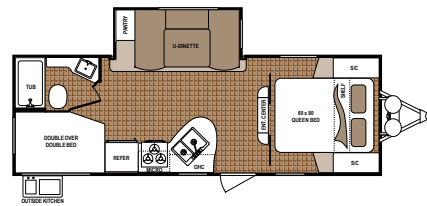
Optional Queen Bed IPO Bunks

\*Models only available in the Western Region



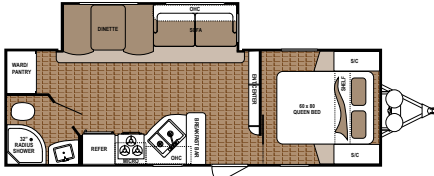
### ASPEN TRAIL | 2050QBWE\*

Ext. Length: 24' 10" Ext. Height: 10' 8" Average Shipping Weight: 4,181 Sleeps: 3-4



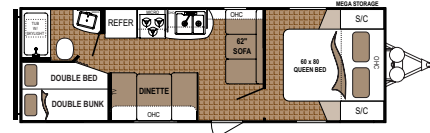
### ASPEN TRAIL 2340BHS

Ext. Length: 27' 2" Ext. Height: 11' 4" Average Shipping Weight: 5,632 Sleeps: 3-4



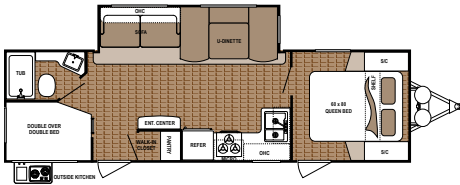
### ASPEN TRAIL 2480RBS

Ext. Length: 28' 9" Ext. Height: 11' 3" Average Shipping Weight: 5,838 Sleeps: 4-5



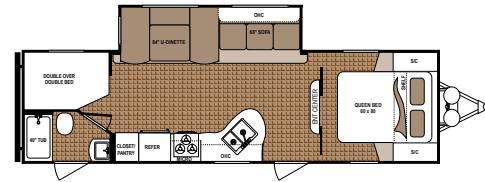
### ASPEN TRAIL | 2710BH

Ext. Length: 28' 7" Ext. Height: 10' 7" Average Shipping Weight: 4,655 Sleeps: 4-6



### ASPEN TRAIL 2790BHS

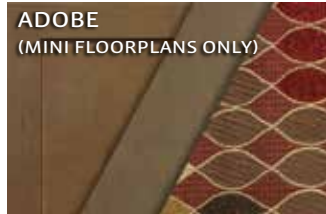
Ext. Length: 31' 10" Ext. Height: 11' 3" Average Shipping Weight: 6,402 Sleeps: 6-8



### ASPEN TRAIL | 2810BHS

Ext. Length: 32' 2" Ext. Height: 11' 4" Average Shipping Weight: 6,297 Sleeps: 6-8

## DÉCOR



## STANDARDS AND OPTIONS

### INTERIOR STANDARD FEATURES

- 3-burner range with oven
- 6 cu. ft. gas/electric refrigerator
- 6-gal. gas/electric water heater with DSI 12-volt, 55-amp converter
- Kitchen sink with high-rise faucet
- 82" interior height, 6 ft. ceiling in slideroom
- 8,000-BTU non-ducted air (1600, 1700 and 1750)
- 13,500-BTU ducted air (n/a 1600, 1700, 1750 and 1900)
- Bath skylight
- Bath tub exhaust fan
- Bedsprad
- Decorative refrigerator insert
- Cable TV hookup with booster
- Foot-flush toilet
- High-output furnace
- LED lights
- Microwave
- Radius overhead cabinets

### Range hood with light and exhaust fan

- Shower/tub surround
  - Water heater bypass
- ### EXTERIOR STANDARD FEATURES
- 2 exterior speakers
  - Diamond-plate rock guard
  - Digital TV antenna
  - Dual 20-lb. propane bottles with cover
  - E-Z Lube axles
  - Extended rain gutters
  - Front and rear stabilizing jacks
  - Heated and enclosed underbelly
  - Awning
  - Mega pass-thru storage compartment with light
  - Power cord
  - Radial tires
  - Seamless, one-piece, walk-on roof
  - Triple entry steps (deep slides)
  - Tinted safety-glass windows

### ASPEN TRAIL UPGRADE PACKAGE

- 60" x 80" Everdream mattress
- Aerodynamic front profile
- Aspen Trail central command center
- Full-extension, roller ball bearing drawer guides
- Hardwood cabinet doors and drawers
- Laundry chute (select models)
- Stereo with CD/DVD/Bluetooth
- Upgraded wood plank linoleum

### MANDATORY OPTIONS

- Aspen Trail Upgrade Package
- Outside shower
- Power awning with LED lights

### OPTIONS

- 2nd 13,500-BTU non-ducted bedroom A/C (select models only)
- 2nd A/C prep with 50-amp service (select models only)

### Aluminum wheels

- 29" LED TV
- 15,000-BTU A/C in place of 13,500-BTU A/C
- Dual 30 lb. propane bottles with cover
- Electric front and rear stabilizer jacks
- Free-standing table and 4 chairs (3150REDS only)
- Front queen bed in place of bunks (3600 only)
- Power tongue jack with docking light
- Spare tire with cover
- Tri-fold hide-a-bed (select models)

### CODES & SEALS

- CSA construction and seal
- RVIA seal
- State seal (where applicable)
- Winterization

**DISCLAIMER:** Product information is as accurate as possible as of the date of brochure publication. All features, floorplans and specifications in this brochure are subject to change without notice. Please consult Dutchmen's website at [www.Dutchmen.com](http://www.Dutchmen.com) for current product information and specifications. Tow Vehicle Disclaimer. **CAUTION:** Owners of Dutchmen recreational vehicles are solely responsible for the selection and proper use of tow vehicles. All customers should consult with a motor vehicle manufacturer or their dealer concerning the purchase and use of suitable tow vehicles for Dutchmen products. Dutchmen disclaims any liability or damages suffered as a result of the selection, operation, use or misuse of a tow vehicle. DUTCHMEN'S LIMITED WARRANTY DOES NOT COVER DAMAGE TO THE RECREATIONAL VEHICLE OR THE TOW VEHICLE AS A RESULT OF THE SELECTION, OPERATION, USE OR MISUSE OF THE TOW VEHICLE. REFERENCE DUTCHMEN MANUFACTURING OWNERS MANUAL FOR LIMITED WARRANTY DETAILS.

# TRAILBLAZING VALUE



## DUTCHMEN—A NORTH AMERICAN CAMPGROUND CLASSIC

Few manufacturers have built RVs for 25+ years, and only one has set the standard for innovation AND value. Dutchmen **IS** "A North American Campground Classic."



# Dutchmen®

Legendary Innovation. Trailblazing Value.

# MORE STANDARD FEATURES MORE VALUE

Dutchmen RVs turn more heads on the lot and in the campground than any other. Why? While other manufacturers offer features as options, Dutchmen tends to make those same features standard. Call it "bang for the buck," "more for your money," or simply "more value." **We've built a reputation for bringing RV owners more standard features for less money** for more than 25 years... and it's a reputation we plan to keep.

# 300 STRONG

**NATION WIDE DEALER NETWORK**

More than 300 Dutchmen dealers across North America and our industry-leading service center in Goshen, Indiana, combine for your peace of mind before, during and after the sale. Rest assured no matter where your travels take you, **the best-resourced RV manufacturing company in the world is behind you all the way.**

PO BOX 2000 • 2164 Caragana Court  
Goshen, Indiana 46527 Sales: 574.537.0600  
[www.dutchmen.com](http://www.dutchmen.com)

At Dutchmen, quality is our standard. **Every single Dutchmen RV that comes off the line receives its own pre-delivery inspection.**

Typically, a competitor performs random inspections, meaning you won't find this commitment to quality anywhere else.



Scan this QR Code for the latest updates to floorplans and specs of Aspen Trail models.



**[www.dutchmen.com](http://www.dutchmen.com)**

Visit us online to see all of the Dutchmen brands, innovative models and spacious floorplans.

Your local dealer

From giving advice to servicing products, we consider our loyal dealers the best resource for learning about Dutchmen products.

ASP-DM0117-30k