

# FEATURE FALL OUT!

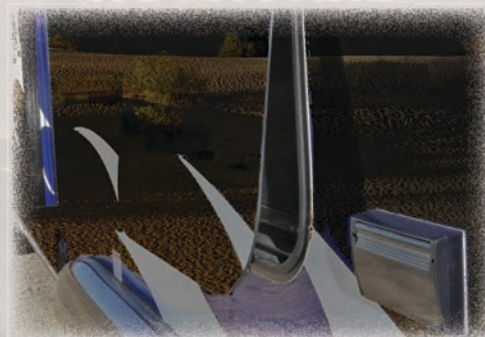
## EXTREME PACKAGE\*

Equa-Flex Equalizer  
Aluminum Wheels with Metal Stems & Over-Rated Radial Tires  
Heavy-Duty Electric Tongue Jack with Work Light & Manual Override  
Omega Fiberglass Exterior  
Frameless Automotive Windows  
Large Exterior Assist Handle  
Crown Ceiling  
LED Lighting in Overhead Cabinets  
LED Infinity Mirror in Bedroom  
LED Hitch & Utility Light  
Ground EFX LED Lighting  
Motion-Sensor LED Step Light  
Security Safe  
Night Shades with Deluxe Designer Window Boxes  
Control Panel with Functions, Features & Monitoring  
Two (2) 58 gal Fresh Water Tanks  
Three (3) 5 gal LPG Tanks (Exchange Ready)



Beaver tail - extending the ramp angle for lowered vehicles  
- streets bikes and race cars!

## NOT A PANE!



New frameless, tinted windows with bottom pivot for better ventilation (can be opened when it is raining).

## MISSION CONTROL



Lighted designer control panel that puts all your systems at your finger tips!

## LIGHT IT UP!



Don't come home in the dark. Warrior's offer a motion sensor LED Step Light and Ground EFX LED lighting.



Cool-Blue LED overhead cabinet lighting and an Infinity Blue light mirror in bedroom.



## NOT YOUR ORDINARY TOY HAULER

**W**EEKEND WARRIOR believes in building a world-class toy hauler. Many companies seek only the least expensive trailer components. We believe for not a lot more, you usually get a better, longer lasting component. This translates into a far more valuable trailer and a better RV experience.

## WEEKEND WARRIOR - Quality Is in Our DNA

When you take a closer look, you will see quality features that really make the difference:

- **MAX-RATED TIRES** - Tires should always have a high max rating. Many companies do not go through the extra expense. There is a sense of security knowing that in the event of a flat tire, the other tires will have less stress/fatigue at that crucial point. Only metal valve stems are used, because rubber ones rot and will cause a flat tire.
- **AERO-TAPERED NOSE\*** - Improved aerodynamics by engineering a front cap that not only slants forward, but actually tapers as well. This provides superior towing experience and less "buffeting" in cross winds.
- **AERO GAS BOTTLE COVER** - We determined that using up to 3\* standard BBQ bottles would make it easier for you to get propane (exchange bottles), then we lowered them into the main frame and designed a low profile shroud.
- **EQUA-FLEX SUSPENSION EQUALIZER\*** - This patented system absorbs road shock, which can cause significant damage to chassis and body. Instead of transferring the "jolt" to the RV body, the equa-flex system diffuses vibration. Provides a much smoother ride vs. traditional leaf-spring only designs.
- **ELECTRIC & MAGNETIC BRAKES** - Extra safety is provided by running brake wiring through the axle tube vs. being exposed like most trailers. In addition, Omega RV utilizes a "loop" design so all brakes receive equal braking pressure (this means more precision braking at all corners). This reduces uneven wear or the dreaded "flat spot" on one of the tires.
- **BEEFED UP CHASSIS** - The Warrior foundation begins with a rugged I-beam, main-rail design. We integrate a steel grid in between the main rails and cross members. Durable flooring made of 5/8" exterior rated OSB flooring attached in over 100 places!

Our design/manufacturing team has decades of experience in quality building. That is our commitment to you for your next chapter in RV living. We call our products "freedom machines." Enjoy your freedom.

## BUY the REAL thing - WEEKEND WARRIOR

**Weekend Warrior Toy Haulers a division of OMEGA RV LLC**  
710 W Simplot Blvd | P.O. Box 1300 | Caldwell, Idaho 83606  
Phone: (208) 310-7979  
www.weekendwarriorrv.com  
Email: info@omegarv.com

Note: Manufacturer reserves the right to make changes to floor plans, specifications, features, and option at any time.  
\*Indicates Optional Feature or Model Specific

## YOUR LOCAL WARRIOR DEALERSHIP







# FEATURES & OPTIONS

## STANDARD EXTERIOR FEATURES

### EXTERIOR

- Omega Aerodynamic Front Cap
- Tinted Windows
- Patio Awning
- TV/FM Stereo Antenna
- Custom Fenders
- Custom Graphics
- Generator Compartment with Door
- Outside Wash Station
- Hitch & Utility Light
- Curbside & Ramp LED Lights

### CHASSIS

- I-Beam Chassis Main Rails with Full-Depth Cross Members
- All Steel Grid Floor Support
- 5200 lb Tandem Axles\* with Self-Adjusting Brakes & Super Lube
- Internal Axle Brake Wires Protected
- Chrome Wheels with Metal Stems & Over-Rated Radial Tires
- EZ Crank-Down Spare Tire Carrier
- Curb-Side Fresh Water Pump Draw
- 1 1/2" Quick-Drain Fresh Water Tank
- Black Out Fresh Water Tanks

Aero front Cap, slanted & tapered, superior in windy conditions.  
Aero LP Tank cover, with up to 3' standard BBQ bottles - Get Refills Everywhere!



NS1900-10 BAY WINDOW in CONFETTI ESPRESSO INTERIOR (Extreme Package Option Shown)

## CONSTRUCTION & SYSTEMS

- Integrated Construction with Hi-Tensile Glue Bonds
- All Screw & Lag Bolt Assembly
- Trussed Roof
- Partial Walk-On, One-Piece EPDM Roof
- Strategically-Placed Exterior Sheer Panels
- Flush Steel Mounted Tie Downs
- Trailer Break Away-Brake Switch
- Wired for Satellite System, Cable, & Local TV
- Dump Hose Carrier
- 58 gal Fresh Water Tank
- Dual 5 gal LPG Tanks (Exchange Ready)



Fueled for Fun! 40-gallon fuel station with Roadside pump system keeps the toys up and running without trips to town.

## STANDARD INTERIOR FEATURES

### INTERIOR

- Stereo Unit DVD/CD - Zone-Control
- Designer Window Coverings
- LED Lights Throughout
- Private Bath with Porcelain Foot Flush Toilet & 24x40 Tub/Shower Combo
- Dual toilet Paper Holder
- Bath Skylight
- Hallway Lavy Station & Medicine Cabinet

### GALLEY & CARGO AREA

- Full Area Overheads
- Designer Galley Overhead with Open Shelf Storage
- Extra Large Galley Window & Blind
- Corner Galley Counter Space
- Dinette Tables
- Full Dinette Skirts
- Night Shades

### APPLIANCES & MISC

- 6 cu ft Double Door, 2-Way, Full Auto Refer (Gas & 110v)
- Electronic Ignition, 6 gal, Quick Recovery Water Heater
- 25,000 BTU\* Ducted Thermostat Controlled Furnace
- 3-Burner Covered Cook Top
- 55 amp High Output Converter Battery Charger
- 13.5 BTU Ducted Air Conditioner\*



## STANDARD BUILD OPTIONS

- Stabilizer Jacks 2-Pair (Front & Rear)
- EZ Winterization System
- Matching Spare Tire
- Micro/Convection Oven
- Power Awning with LED Lighting Upgrade
- Exterior Speakers
- Zamp Solar Ready
- Custom LPG Tank & Battery Cover
- Diamond Plate Rock Guard
- Flat Screen TV (110v)
- RV Industry Seal

## POPULAR OPTIONS

- 3100w Portable Generator
- 4 kw Onan® Generator with Auto Transfer Switch & 40 gal Fuel Tank
- Kicker® Sound System Upgraded Stereo CD/DVD/Bluetooth
- Roadside Pump Station Only
- 20 gal Fuel Station with Roadside Pump System
- Second Fresh Water Tank (58 gal)
- Black Tank Flush
- Power Jack
- Electric Stabilizer Jacks 2-Pair (Front & Rear)
- Removable Carpet with Bordered Edges
- Coin Seal Floor Covering—Cargo & Ramp
- Toy Box Lock
- Heated Tanks
- Upgrade to 15.0 BTU Air Conditioner
- 10 amp Solar Charging Station
- Retractable Roof Ladder
- Large Exterior Assist Handle
- Dual Picture Windows & Captain Swivel Rockers
- Roadside Sofa Slide-out
- Single or Double Elect Lift Bed (Twin) - NS1900 Only
- Single/Double Elect Lift Bed (Queen)
- Bottom Upgrade Optional Electric Bed Choices
- Forward Facing Sofa/Bed
- Cross-Facing Walk-Through Dinette/Bed (with Ramp Cable)
- TV in Bedroom
- CSA (Canada)

\*Model Specific

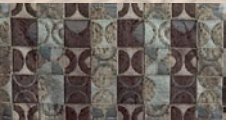
## INTERIOR OPTIONS



Confetti Espresso



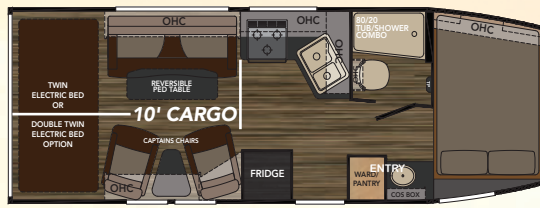
Reggie Mocha



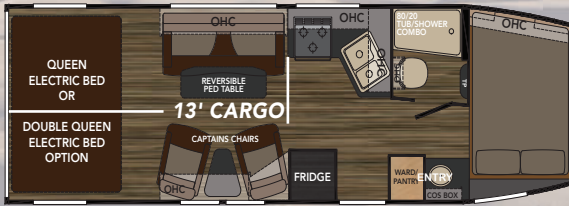
Rhumba Cappuccino

# SUPERLITES SERIES

NOSE SLEEPERS  
LIGHTEST OF THE 1/2-TON TOWABLES!



NS1900/10 SHOWN WITH OPTIONAL BAY WINDOW



NS2200/13 SHOWN WITH OPTIONAL BAY WINDOW



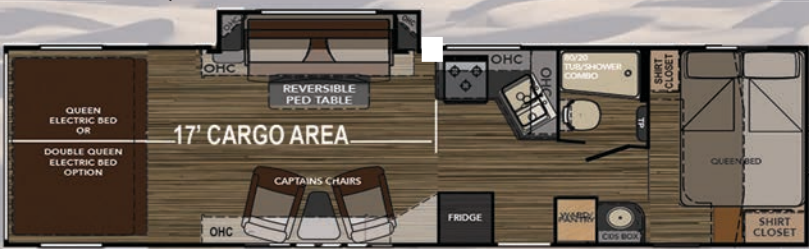
NS2600/17 SHOWN WITH OPTIONAL BAY WINDOW



NOSE SLEEPER BEDROOM \*



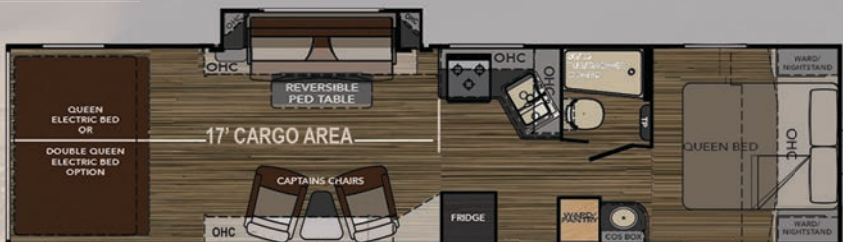
CB2600/13 SHOWN WITH OPTIONAL SLIDE OUT & BAY WINDOW



CB3000/17 SHOWN WITH OPTIONAL SLIDE OUT & BAY WINDOW



LB2700/13 SHOWN WITH OPTIONAL SLIDE OUT & BAY WINDOW



LB3100/17 SHOWN WITH OPTIONAL SLIDE OUT & BAY WINDOW

## SUPERLITES SPECIFICATIONS

WARRIOR	NS1900/10	NS2200/13	NS2600/17	CB2600/13	CB3000/17	LB2700/13	LB3100/17
<b>Sleeping Accommodations</b>	4-6	4-8	4-8	4-8	4-8	4-8	4-8
<b>Capacity</b>							
Furnace	20m	20m	20m	25m Ducted	25m Ducted	25m Ducted	25m Ducted
Fresh water	58	58	58	58	58	58	58
Water Heater	6	6	6	6	6	6	6
Holding Black water	47	47	47	47	47	47	47
Holding Gray water 1	47	47	47	47	47	47	47
<b>Wheel</b>	<b>Tire</b>	<b>LR</b>					
15 x 6	ST225/75R15	E	4	4	6	4	6
<b>Weights</b>							
Axle	5,100	5,400	5,900	6,000	6,500	6,100	6,600
Hitch	960	980	1,100	1,100	1,100	1,100	1,100
No. of Axles	2	2	3	2	3	2	3
G.V.W.R.	11,400	11,400	14,000	11,400	14,000	11,400	14,000
CCC	4,500	4,500	5,500	4,300	5,500	4,200	5,500
<b>Size</b>							
Length (exterior)	25' 2"	28' 2"	32' 2"	31' 9"	35' 9"	32' 11"	36' 11"
Width (exterior)	96"+	96"+	96"+	96"+	96"+	96"+	96"+
Height (exterior)	11' 7"	11' 7"	n/a	n/a	n/a	n/a	n/a
Width (interior)	92 3/4"	92 3/4"	92 3/4"	92 3/4"	92 3/4"	92 3/4"	92 3/4"
Height Interior (Shortest)	80 3/4"	80 3/4"	n/a	n/a	n/a	n/a	n/a
Height Interior (Highest)	92 1/4"	92 1/4"	92 1/4"	92 1/4"	92 1/4"	92 1/4"	92 1/4"
Awning	15'	15'	15'	n/a	n/a	n/a	n/a

+ = De-rated  
Red = estimated weight

PRE-ORDER

## SUPERLITES - Your Way!

Warrior SuperLites Offer Up to 17' of Cargo with Three Choices for your Sleeping Comfort and Optional Living-Area Slide-Outs for increased living space

