

# AMERI-LITE

## Ultra-Lite

Reliable, Fuel-Efficient  
Family-Friendly Travel Trailers



250RL



268BH

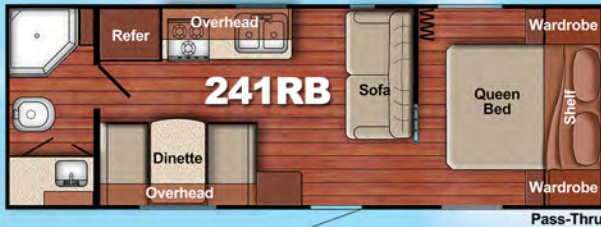
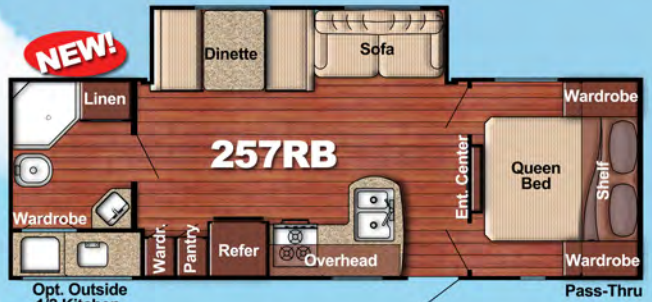
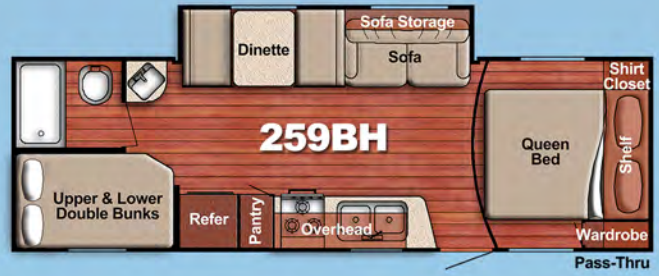


274QB

### Ultra-Lite: The Standard Features you want:

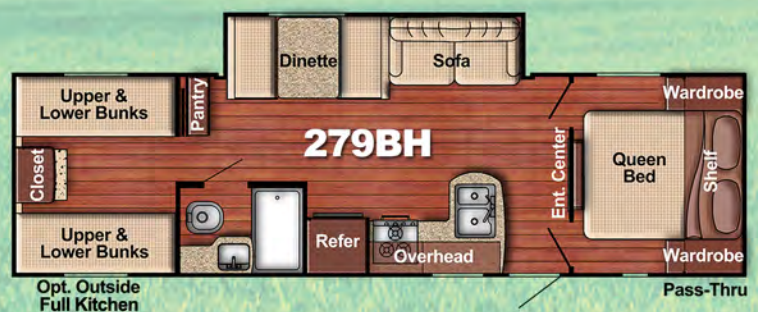
- One-Piece Seamless Roof w/12-Year Warranty
- Electric Brakes
- 16,000 BTU Furnace
- Tubular Steel Cambered Frame
- Floor Joists 13" On Center
- Floor Decking screwed & glued
- Wall Studs 16" O.C. or better
- Radius Entry Door
- Roller-Bearing Drawer Guides
- Pass-Thru Storage (most models)
- Fiberglass Insulation hand-cut & glued in place
- Tapered Roof Rafters
- Front Diamond Plate
- 6 gallon Gas Water Heater
- Woodgrain Vinyl Flooring
- Vinyl Lined Drawers
- Hardwood Drawer Fronts
- Hardwood Cabinet Doors w/mortise and tenon joints
- Mini Blinds throughout
- Foot Flush Toilet
- Skylight in Bath
- Power Bath Vent
- 3-Burner Range Top
- Power Range Vent Hood
- Microwave Ready
- Kitchen Backsplash
- Designer Window Treatments
- Flush-Mounted Refrigerator
- System Monitor Panel
- Cable Ready
- Queen Bed w/Innerspring Mattress & Bedspread
- Bed Lifts for easy access to under-bed Storage
- Black-Framed Safety Glass Windows
- 30 Amp Service with 45-Amp Power Converter
- Ducted A/C (n/a 218MB, 248BH)
- Pre-wired for Air Conditioner
- (2) 20 lb. LP Bottles and Cover

# Ultra Lite Floor Plans:



## Specifications:

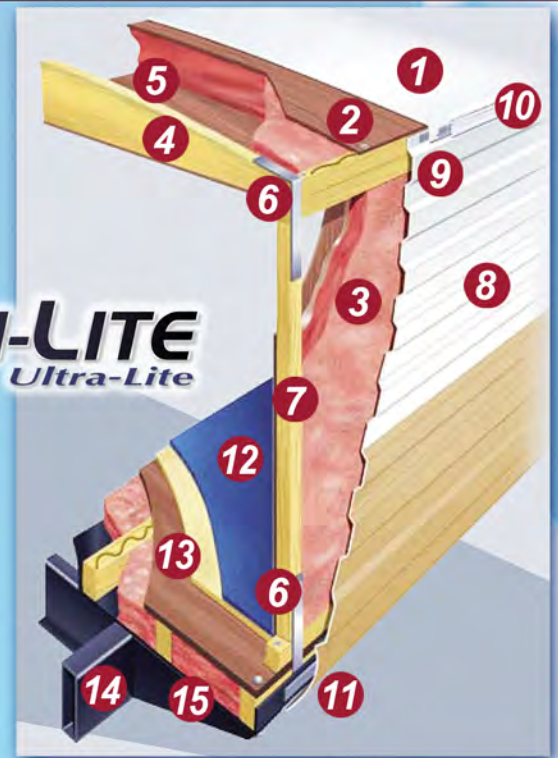
Model	Length	Width	Height	Int Hgt	Dry Wgt (lbs)	Hitch Wgt (lbs)	Nt Carry Cap (lbs)	Fresh Wtr (gal)	Grey/Black Tanks(gal)
218MB	22'7"	96"	9'6"	6'4"	3,927	350	1,853	30	36/36
238RK	27'11"	96"	10'6"	6'4"	4,830	640	2,850	30	36/36
248BH	26'5"	96"	9'6"	6'4"	4,060	540	1,920	30	36/36
241RB	26'11"	96"	9'6"	6'4"	4,090	490	2,320	30	36/36
255BH	28'10"	90"	10'6"	6'4"	4,880	620	2,749	51	36/36
259BH	28'10"	90"	10'6"	6'4"	4,970	550	2,850	51	36/36
250RL	30'4"	96"	10'6"	6'4"	5,664	790	1,960	51	36/36
257RB	28'0"	96"	10'6"	6'4"	4,530	700	1,720	30	36/36
268BH	29'4"	96"	10'6"	6'4"	5,220	660	1,940	30	36/36
274QB	32'6"	96"	10'6"	6'4"	5,930	720	1,790	30	36/36
279BH	32'6"	96"	10'6"	6'4"	5,976	730	2,458	30	36/36



# What's Different about Ameri-Lite? We're Simply Built Better.

1. One-piece seamless roof w/12 yr. warranty
2. Strong wood roof decking, screwed & glued
3. Thick energy-saving blankets of hand-cut fiberglass insulation in ceiling, walls & floors; insulation bonded to walls to prevent settling
4. Solid wood rafters
5. Interior ceiling board
6. Galvanized steel straps to increase roof-to-sidewall & sidewall-to-floor strength
7. Sturdy wood sidewall 16" on center, set on floor & screwed in for maximum strength
8. Aluminum siding w/baked enamel finish
9. Butyl caulk for better seal, fewer streaks
10. Drip rail to direct rain runoff away from unit
11. Tough polymax underbelly overlaps sides & ends to protect against moisture & debris
12. Durable heavy-gauge vinyl floor covering
13. 5/8" floor decking screwed & glued to floor joists, 13" on center
14. Tubular steel frame
15. Full-width steel outriggers for superior strength and support

**AMERI-LITE**  
Ultra-Lite



Visit [www.gulfstreamcoach.com](http://www.gulfstreamcoach.com) for more information!

## High-Value Option Packages:

### LE Package (Req.):

- 13,500 BTU Roof-Mount Air Conditioner
- Manual Awning
- Microwave Oven
- TV Antenna w/Power Booster
- Stabilizer Jacks

### Platinum Package:

- 3-Burner Range w/Oven
- Outside Hot & Cold Shower
- Extra Overhead Cabinet

### Lite Value Package:

- LED Interior Lighting
- Power Awning
- LED Awning Light
- Power Hitch Jack
- CD/DVD Player w/Outside Speakers
- Pleated Shades in Living Room

## Other Popular Options:

- Radial Tires
- Spare Tire & Wheel
- Aluminum Wheels
- Brite Package
- Outside Shower
- 1/2 Outside Kitchen (257RB, 274QB)
- Full Outside Kitchen (279BH)
- Swing-Away Grab Handle
- 3-Burner Range w/Oven
- Double Door Refrigerator
- 6 Gal Gas/Electric 110V DSI Water Heater
- 6 Gal Gas DSI Water Heater
- 15,000 BTU Air Conditioner
- Glass Shower Door (218MB, 238RK, 241RB, 250RL, 257RB)



**24 MONTH WARRANTY ON STRUCTURAL COMPONENTS\***

1 year total use warranty under normal use against defects in materials and workmanship in construction and original components. \*For purposes of this warranty, Structural Components shall be limited to the structure of the side walls, front & back walls, roof and floor. See the official written Gulf Stream Coach, Inc. Warranty for details.

In addition to a standard one-year warranty, our exclusive Gulf Stream Coach Warranty gives you TWO YEARS of coverage on key structural components of your new Ameri-Lite Ultra Lite (one year on Super Lite). That extended protection is also offered to Gulf Stream owners by many of the manufacturers that supply components for Ameri-Lite units,

including the refrigerator, antenna, furnace, water heater, air conditioner, awning, range, microwave, and more. Check the full warranty statement for complete information and details.

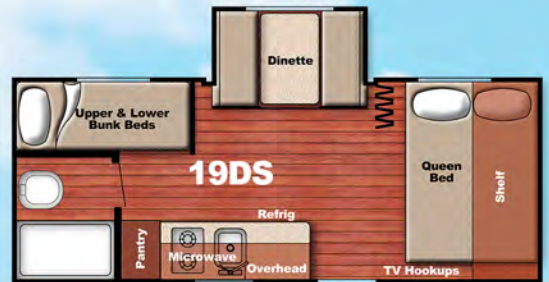
For complete product information, see a local Gulf Stream Coach Dealer or visit [www.gulfstreamcoach.com](http://www.gulfstreamcoach.com). Gulf Stream Coach, Inc. reserves the right to change features, specifications, materials, and components at any time without further notice. Not responsible for typographical errors. Photos may show additional cost options. © Gulf Stream Coach, Inc., Nappanee, Indiana USA. #AME122016

# AMERI-LITE

# Super Lite



Super-low weights - 2300 to 3200 lbs.  
6'4" of headroom inside. An easy tow  
with your Mini Van or small SUV. Above: 8 ft. wide 198BH.



### Super Lite Standard Features

- Seamless Roof w/12 Year Warranty
- Thick Fiberglass Insulation Batts
- Solid Tapered Roof Rafters
- 16" O/C Sidewall Construction
- Sturdy Wood Floor Joists 13" or less O/C
- Tubular Steel Frame
- Electric Brakes, Safety Chains
- Wall Mount Fire Extinguisher
- LP Leak Detector, Smoke Detector
- 30 Amp Service w/45 Amp Converter/Charger
- Floor Decking screwed & glued
- Maple Cabinetry
- Seamless Vinyl Flooring
- Radius Entry Door
- Laminated Countertops
- Kitchen Backsplash
- Fabric-Wrapped Box Valances
- Lower Front Diamond Plate
- Black Frame Safety Glass Windows
- Gutter Rail w/Extended Downspouts
- Uni-Body Construction w/Steel Straps tying walls to floor & roof
- Three Designer Interior Decor Choices

### Camping Package (Req.)

- 2-Burner Cooktop
- Microwave Oven
- 6-Gallon Hot Water Heater
- 20 lb. LP Tank
- Awning
- Shower & Toilet
- Electric Refrigerator

### Convenience Pkg (Req. on 199DD)

- 3 cu. ft. Gas/Electric Refrigerator
- 6 cu. ft. Double Door Refrig. (199DD only)
- TV Antenna
- Spare Tire
- 2 Rear Stabilizer Jacks

### Additional Options

- LED Interior Lighting (Required)
- Touch Audio Radio w/4 Speakers
- 16,000 BTU Furnace
- 13,500 BTU Roof Air Conditioner (Req. on 199DD)
- 8,000 BTU Wall Air Conditioner
- Outside Shower
- 6 Gal Gas/Electric DSI Water Heater
- Electric Awning

Specifications	14RBC	16BHC	188RB	198BH	19DS	199DD
Length	17'2"	18'7"	20'10"	21'	20'11"	20'11"
Width	84"	84"	96"	96"	84"	96"
Ext. Height	8'11"	8'11"	8'11"	8'11"	8'11"	10'0"
Int. Height	6'4"	6'4"	6'4"	6'4"	6'4"	6'4"
Carrying Cap	1050	460	850	900	840	690
Hitch Weight	220	330	360	350	440	340
Dry Weight	2230	2590	3010	2790	3100	3160
Fresh Water	30	30	30	30	30	30
Grey/Black Tanks	36/36	36/36	36/36	36/36	36/36	36/36

Your Gulf Stream Coach Dealer: