



VERSATILITY REDEFINED

SPARTAN



www.primetimerv.com

North America's
Favorite RV Company!

FIFTH WHEELS

SPARTAN

VERSATILITY REDEFINED

From the first impression to the last detail, Spartan will draw you in. Every aspect of the interior and exterior was designed for full comfort and convenience . . . and no luxury was spared. Whether you're looking to relax in the residential reclining sofa, indulge in the gourmet kitchen, rest in the resort-like bedroom, or spend the day tinkering with your toys in the ultra-functional garage, Spartan is for YOU.

Spartan 1141 Kitchen



LUXURY REDEFINED

If Luxury is what you're looking for, Spartan is your oasis. No checkered flag interiors and flashy uncomfortable seating here. Welcome to an intersection of sizzle and steak; of style and substance. Abundant storage and residential amenities adorn each Spartan floorplan and the "designer's touch" is hard to miss. Spartan is a place to get away, yet give up nothing. Enjoy your stay . . .



COMFORT REDEFINED

From the first impression to the last detail, Spartan cuts no corners in the bedroom and bathroom. Every aspect of these spaces has been carefully thought out and perfectly executed. In the bedroom, oversized wardrobe closets, chest of drawers, HUGE overhead cabinets, and massive walkways create optimal space and comfort that surpasses anything in its class. And rest assured, you'll find a great night's sleep on the 80" memory foam mattress.

As you enter the bathroom, you'll find that Spartan has listened closely to our customers and elevated our design to exceed even the loftiest expectations. Abundant countertop space, large medicine cabinet, and numerous LED lights provide all the conveniences of home. The intelligent high-rise porcelain toilet, extra-large showers with glass doors, Skyview skylight, clever "STOR-MOR" Shower Caddy, and integrated solid surface sink with high arch faucet provide a level of comfort only found in Spartan.

Spartan 1234X Bedroom



Spartan 1245 Bathroom

FUNCTIONALITY REDEFINED

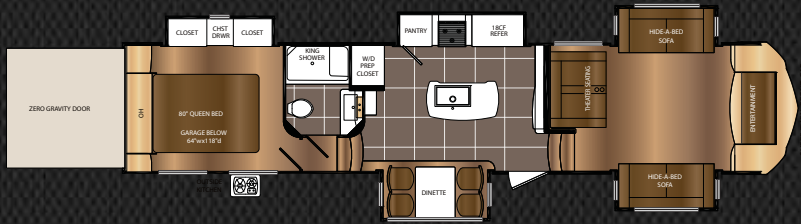


Spartan's garages provide room for all your toys, plus a wide range of entertainment options.

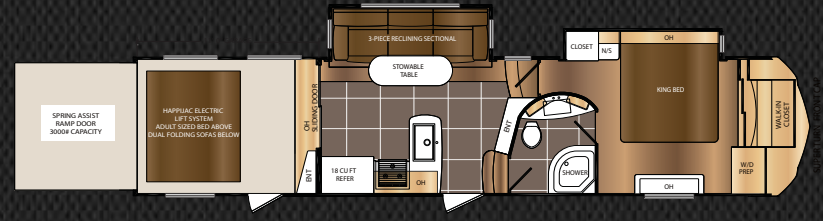
In addition to 22" Black Diamond Plate wall protection, exclusive Stor-Mor storage doors and D-Rings that are BOLTED to the chassis frame, the garage area also features an LED TV framed in cherry cabinetry, advanced control center, and Bluetooth® enabled stereo.

- A.** Optional Rear Patio
- B.** Power Rear Awning
(included with patio option)
- C.** All LED Exterior Lights
- D.** Standard Pull Down Screen
- E.** Standard Happi-Jack Drop Down Bed and Folding Sofas
- F.** Gas/Oil Resistant Flooring
- G.** Three-Season Doors (optional)
- H.** Garmin Rear View Camera

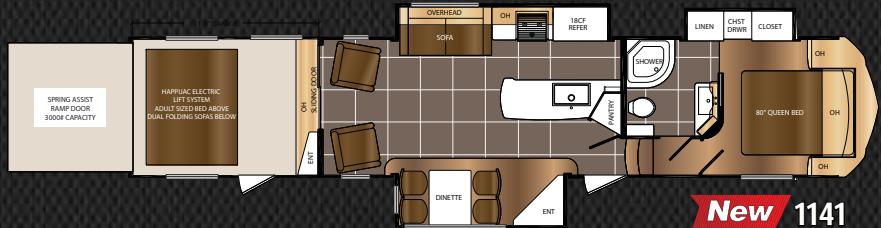
SPARTAN FLOORPLANS



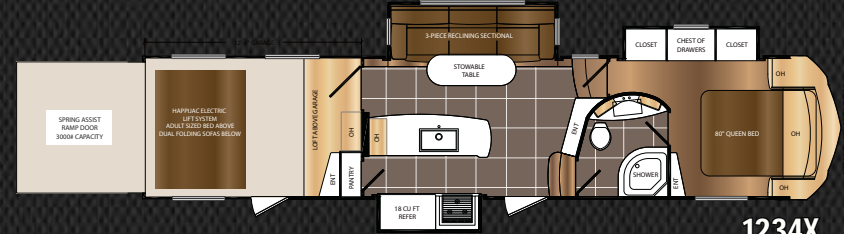
New 1036



New 1135



New 1141



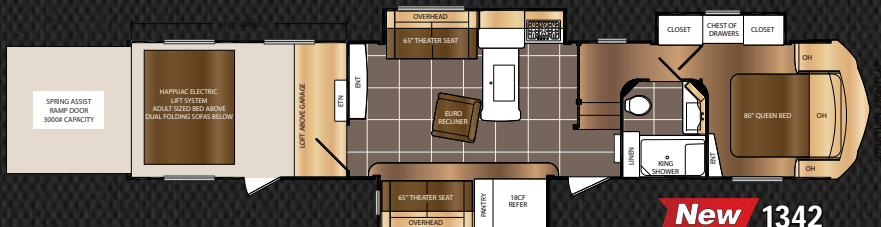
1234X



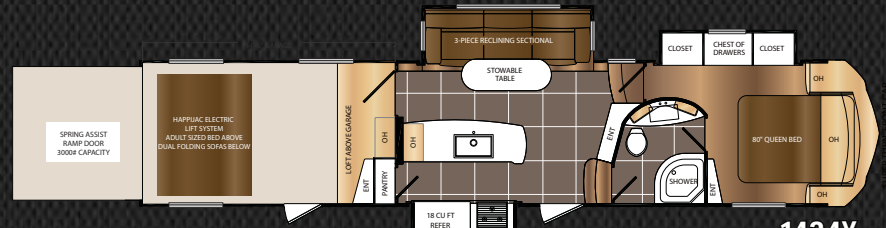
1242X



1245



New 1342



1434X

SPECIFICATIONS	1036	1135	1141	1234X	1242X	1245	1342	1434X
LENGTH	41' 3"	40' 5"	43' 5"	39' 3"	42' 10"	43' 6"	43' 8"	41' 3"
HEIGHT	13' 3"	13' 3"	13' 3"	13' 3"	13' 3"	13' 3"	13' 3"	13' 3"
HITCH WEIGHT	TBD	2,767 lb.	3,140 lb.	2,780 lb.	2,820 lb.	2,627 lb.	2,540 lb.	2,442 lb.
UNLOADED VEHICLE WEIGHT (UWV)	TBD	14,054 lb.	15,332 lb.	13,819 lb.	15,026 lb.	15,051 lb.	15,374 lb.	14,501 lb.
CARGO CARRYING CAPACITY (CCC)	TBD	2,713 lb.	5,668 lb.	4,143 lb.	5,936 lb.	5,949 lb.	5,626 lb.	3,499 lb.
FRESH WATER TANK	TBD	105 gal.	105 gal.	105 gal.	105 gal.	105 gal.	105 gal.	105 gal.
GRAY WATER TANK	TBD	87 gal.	87 gal.	87 gal.	87 gal.	87 gal.	132 gal.	87 gal.
BLACK WATER TANK	TBD	45 gal.	45 gal.	45 gal.	90 gal.	90 gal.	45 gal.	45 gal.
GARAGE LENGTH	9' 3"	11'	11'	12' 6"	12' 6"	12'	13'	14' 6"

UVW (Unloaded Vehicle Weight) is the typical weight of the unit as manufactured at the factory. It includes all weight at the unit's axle(s) and tongue or pin and LP Gas. The UVW does not include cargo, fresh potable water, additional optional equipment or dealer installed accessories. *Estimated Average based on standard build optional equipment.*

*CCC (Cargo Carrying Capacity)** is the amount of weight available for fresh potable water, cargo, additional optional equipment and accessories. CCC is equal to GVWR minus UVW. Available CCC should accommodate fresh potable water (8.3 lbs per gallon). Before filling the fresh water tank, empty the black and gray tanks to provide for more cargo capacity. ** Estimated average based on standard build optional equipment. See back page for additional specification definitions.*

SPARTAN STANDARDS & OPTIONS

ETERNABOND® Construction

- 2" Laminated Aluminum Framed Sidewalls
- 3" Laminated Aluminum Framed Main Floor
- 5/8" One-Piece Floor Decking On Main Floor
- 1" One-Piece Garage Floor Decking
- Laminated Aluminum Framed Slide Room Walls & Roof
- Welded Construction
- 100% Glue Coverage On All Laminated Parts
- EGS Backers In Walls And Floors

Thermal Package*

- Tested At Zero Degrees
- Heated And Enclosed Water Lines
- Enclosed Underbelly
- Heated Holding Tanks
- 12 Volt Holding Tank Heat Pads
- Radiant Shield Technology Wrapped Holding Tanks (R-38)
- Double Layer Of Fiberglass Insulation In Roof (R-14)
- Radiant Shield Technology In Roof (R-38)
- 3" Hi Density EPS Foam In Main Floor (R-14)
- Radiant Shield Technology Under Main Floor (R-38)
- Double Layer Of Fiberglass Insulation In Front Wall (R-14)
- Radiant Shield Technology In Front Wall (R-38)
- Insulated Slide Room Floors (R-38)
- Insulated Bath And Bed Deck Floors (R-38)
- Heated Pass Thru Storage

INTERIOR

- Native American Glazed Cherry Hardwood Cabinet Doors
- Native American Glazed Cherry Hardwood Drawers
- Baltic Birch Residential Drawer Boxes
- 18 CU. FT. Refrigerator
- Pots-N-Pans Drawers
- Full Extension Drawer Guides
- Large, Easy-To-Pull Cabinet Pull Handles
- 30" OTR Residential Convection Oven/Microwave
- Deluxe Range With Heavy Grates
- Glass Top Range Cover
- Backsplash Behind Cook Top
- Solid Surface Kitchen Countertop
- Solid Surface Flush-Mount Sink Covers
- Modern Commercial Faucet
- Single Basin Stainless Steel Sink
- Industrial Style Pendant Lights
- Jensen® LED TV (Living Room)
- Jensen® Blu Ray DVD Player (Living Room)
- Jensen® Sub-Woofer (Living Room)
- Residential Furniture
- Linoleum With 5-Year Warranty
- Central Vacuum System With 30' Hose
- Electric Fireplace With 5,100 BTU Heating Element
- MCD Roller Shades
- Deluxe Power Vent Fan With Remote Lid
- Flush-Mount LED Ceiling Lights With High Dispersion Lenses
- Cell Phone Storage Center With Charging Station (Some Models)

BEDROOM

- Large LED TV
- Satellite And Cable Connection
- "Stay Cool" LED Reading Lights Above Bed
- Wardrobe Closets With Drawers
- Mirrored Wardrobe Doors
- Oversized Chest Of Drawers
- Massive Under-Bed Storage
- Night Stands With Overhead Cabinets
- Memory Foam 80" Queen Bed (Most Models)
- Memory Foam 80" King Bed (Some Models)
- Designer Bedspread With Decorative Pillows
- Glass Bedroom Entrance Door

BATHROOM

- Extra Large Shower With Glass Door
- Adjustable Shower Faucet
- Deluxe "Sky View" Skylight
- "STOR-MOR" Shower Caddy
- Dual Lever Bath Faucet
- 12V Power Vent Fan In Bath
- Hi Rise Porcelain Toilet
- Heating & Air Conditioning Vents
- High Arch Faucet
- Integrated Solid Surface Sink

EXTERIOR

Advantage Package

- 6-Point Hydraulic Leveling System
- 2nd "Quiet Cool" Ducted Air Conditioner
- Generator Prep
- Happi-Jack Electric Bed And Double Sofa/Bed

Spartan Suspension Package

- "EZ-Flex" Rubberized Suspension
- Heavy Duty Shock Absorbers
- Eight Point Greasable "Wet" Bolts
- Long Lasting Brass Bushings
- Long Lasting 1/2" Shackles
- 7000 lb. Axles
- "EZ Lube" Greasable Axle Hubs
- 16" Aluminum Wheels
- 8 Lug Wheels
- Upgraded Load Range "G" Tires
- "DURA GLOSS" Hi Temp Fiberglass Sidewalls
- 5" Truss Roof Rafters, 16" On Centers
- 3/8" "WALK ON" Roof Decking
- Color Coordinated One-Piece TPO Roof With 12-Year Warranty
- Powder Coated 12" I-Beam
- Oversized Pass Thru Storage With Intelligent Design
- "SUPER TURN" Aerodynamic Fiberglass Front Cap
- Garmin Rear View Camera
- Undermount Spare Tire
- Coax TV Connection In Pass Thru Storage
- 110V Electrical Outlet In Pass Thru Storage
- Dual Electric Awnings With LED Lights (Most Models)
- Slam Latch Baggage Doors With "DURA GLOSS" Finish

- Magnetic Baggage Door Catches
 - 30" Wide Radius Main Entrance Door With Gas Strut
 - Large Swing Out Grab Handles
 - Hitch Pin Cover
 - Digital Ready TV Antenna With Booster
 - Dual Vented Attic
 - Easy Access Roof Ladder
 - (3) LED Security Lights
 - (2) LED Garage Loading Lights
 - Upgraded Frameless, Deep Tint Windows On Sidewalls
 - DOT Approved Safety Glass Windows
 - Extra Large PVC Sewer Hose Storage
 - Extended Drip Spouts
 - Quad Entry Step With Oversized Steps
 - Centralized Holding Tank Pull Handles
 - Easy Winterization Valve And Connection
 - Easy Access Low Point Drains
 - Easy Access Low Point Drain Valves
 - Upgraded Oetiker Clamp Ring Water Line Fittings
- Universal Docking Center That Includes:
- Outside Shower With 15' Flex Hose
 - Black Tank Flush
 - Battery Disconnect
 - Cable Connection
 - Triple Satellite Connections For LR, BR, And Garage

GARAGE

- Large LED TV
- Satellite And Cable Connection
- Hi Power Jensen® Stereo With DVD Player
- Hi Power Jensen® Speakers (Garage and Exterior)
- Steel Tie Downs Bolted To Chassis
- 8' Zero G Ramp Door
- Recessed Storage In Beaver Tail
- 22" "BLACK DIAMOND" Protection On Walls
- Gas/Oil Resistant Flooring
- (2) Ram Air Vents
- Bunk Ladder
- Free Standing Table With Folding Legs
- Pull Down Garage Screen
- Power Vent With Remote Lid
- Air Conditioning Vents With Adjustable Louvers
- Washer/Dryer Prep (Most Models)
- Ducted Heat
- Garmin Camera in Garage

UTILITIES

- Hydraulic Front Landing Gear
- "SOLID STANCE" Front Jack Legs
- "SOLID STANCE" Oversized Landing Pads
- Convenient Hydraulic Selector Valves (Where Applicable)
- Fuel Station With 12V Pump
- Dual 30 Gallon Fuel Tanks
- Dual "Quiet Cool" Ducted Air Conditioners
- Dual Zone Temperature Sensors
- Digital Thermostat

- 35,000 BTU Furnace
- 10 Gallon Gas/Electric Quick Recovery Water Heater
- Direct Spark Ignition Water Heater
- Water Heater By-Pass
- Hi Capacity Water Pump
- 50AMP (110) Power
- Detachable Power Cord
- 90AMP (12V) Converter
- Dual 30# LP Bottles
- CO Detector

OPTIONS

- Trail Air "Roto Flex" Pin Box
- Dual Pane Windows
- Slide Out Awnings
- Onan Marquis Gold 5.5KW Gas Generator
- Rear Patio With Electric Awning
- Three Season Door

*R-Values Calculated at 80° F Ambient Temperature



SPARTAN FEATURES



FUEL STATION

Spartan's fuel stations feature two 30 gallon fuel tanks; one for your generator and one for your toys!



SPARTAN INTELLIGENT SUSPENSION

Spartan features EZ Flex rubberized suspension with 7000lb axles and automotive style shock absorbers!



"QUIET COOL" A/C SYSTEM

Spartan features dual "Quiet Cool" air conditioners with residential programmable thermostat for zoned heating and cooling comfort!



PRIME TIME PROUDLY USES DEXTER AXLES

5 Year Warranty
WARRANTY ONLY LIMITED

Your safety and peace-of-mind while traveling are assured with high quality, heavy duty Dexter Axles.



"LEVEL-UP" AUTO LEVELING SYSTEM

This one touch Auto Leveling System makes setting up your camping site a breeze!



R-52 EXTREME THERMAL PACKAGE*

R-52 Extreme Thermal Package provides superior protection from the elements, while keeping you cool in the summer and warm in the winter.



DUAL LED LIT POWER ADJUSTABLE AWNINGS

Enjoy the convenience of Prime Time's push button electric adjustable awning with LED lights.



ELECTRIC DROP DOWN BUNK AND SOFAS

The Happi-Jack electric bunk and sofas provide comfortable seating and stow away at the touch of a button!



BEAVERTAIL STORAGE

The large recessed storage in the garage is a great place to store tools and gear without taking up additional garage space!



22" BLACK DIAMOND PROTECTION & PERIMETER STEEL TIE DOWNS

The garage is intelligently designed with 22" of black diamond plate wall protection & garage tie downs that are bolted to the frame for secure storage.



OPTIONAL REAR PATIO KIT WITH ELECTRIC AWNING

The rear patio option expands Spartan's living space and allows great comfort while enjoying the outdoors!



ALL LED INTERIOR AND EXTERIOR LIGHTING

All Spartans feature LED interior & exterior lights throughout. These energy efficient lights allow you to maximize your electrical service and they put off virtually no heat!

VALUE REDEFINED

A quick examination of the Spartan 300 Series will lead you to one conclusion: The 300 Series Spartan fifth wheels are quite simply the BEST VALUE in the Toy Hauler segment! The feature-rich nature of the 300 Series Spartan affords you total comfort and all of the amenities needed for your next journey at an attainable price point. If luxurious residential furniture, largest-in-class optional generator, high-gloss weather-proof exterior fiberglass, and functional garage space is what you're looking for, then look no further! Dive deeper into the spacious, storage laden floorplans and surprising standard features to find the perfect fit for your next home away from home!

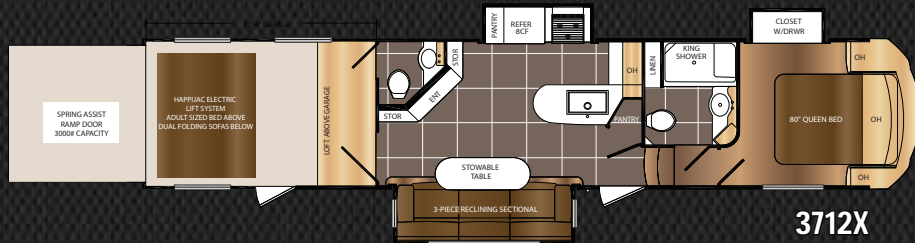
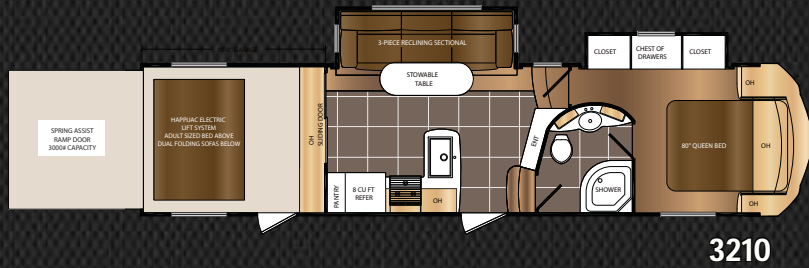
Spartan 3210



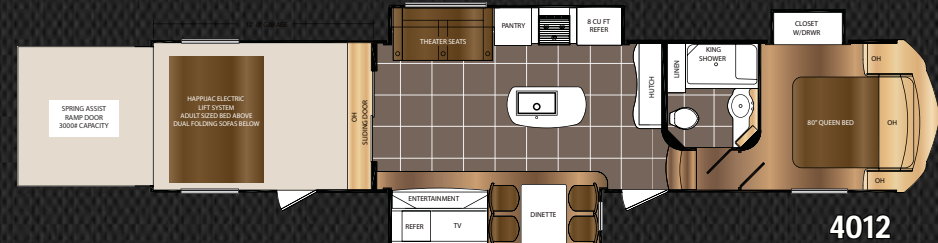
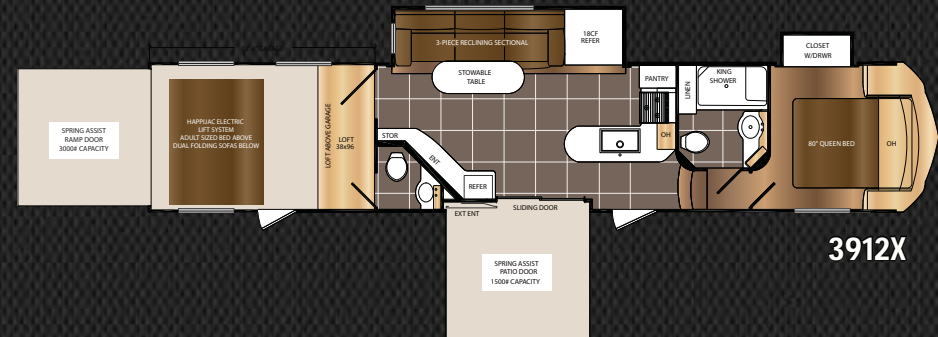
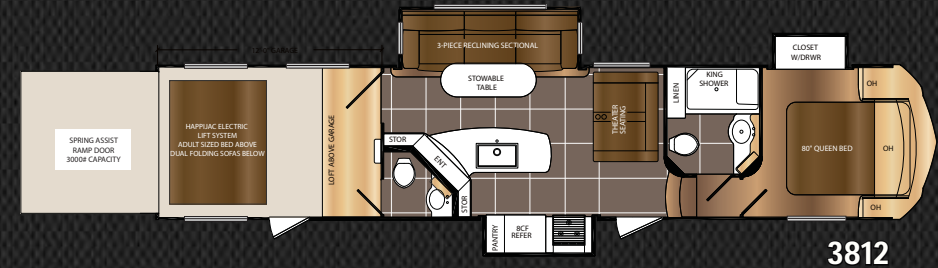
SPARTAN 300-SERIES

SPARTAN 300 SERIES FLOORPLANS

DOUBLE AXLE



TRIPLE AXLE



SPECIFICATIONS	3210	3611	3712X	3812	3912X	4012
LENGTH	36' 2"	38' 9"	40' 8"	42' 2"	43' 0"	42' 3"
HEIGHT	13' 2"	13' 3"	13' 3"	13' 3"	13' 3"	13' 3"
HITCH WEIGHT	2,616 lb.	2,888 lb.	2,745 lb.	3,207 lb.	3,478 lb.	2,816 lb.
UNLOADED VEHICLE WEIGHT (UVW)	11,693 lb.	13,130 lb.	13,433 lb.	14,048 lb.	14,541 lb.	14,195 lb.
CARGO CARRYING CAPACITY (CCC)	4,885 lb.	3,758 lb.	3,312 lb.	6,952 lb.	6,459 lb.	6,805 lb.
FRESH WATER TANK	105 gal.	105 gal.	105 gal.	105 gal.	105 gal.	105 gal.
GRAY WATER TANK	87 gal.	87 gal.	87 gal.	87 gal.	87 gal.	87 gal.
BLACK WATER TANK	45 gal.	90 gal.	90 gal.	90 gal.	90 gal.	45 gal.
GARAGE LENGTH	10'	11'	12' 6"	12'	12' 6"	12'



UVW (Unloaded Vehicle Weight)* is the typical weight of the unit as manufactured at the factory. It includes all weight at the unit's axle(s) and tongue or pin and LP Gas. The UVW does not include cargo, fresh potable water, additional optional equipment or dealer installed accessories. *Estimated Average based on standard build optional equipment.

CCC (Cargo Carrying Capacity)** is the amount of weight available for fresh potable water, cargo, additional optional equipment and accessories. CCC is equal to GVWR minus UVW. Available CCC should accommodate fresh potable water (8.3 lbs per gallon). Before filling the fresh water tank, empty the black and gray tanks to provide for more cargo capacity. ** Estimated average based on standard build optional equipment. See back page for additional specification definitions.

SPARTAN 300 SERIES STANDARDS & OPTIONS

ETERNABOND® Construction

- 2" Laminated Aluminum Framed Sidewalls
- Laminated Aluminum Framed Main Floor
- Laminated Aluminum Framed Slide Room Walls and Roof
- Welded Construction
- 100% Glue Coverage on All Laminated Parts
- EGS Backers in Walls And Floors

Thermal Package*

- Heated and Enclosed Water Lines
- Enclosed and Heated Underbelly
- Double Layer of Fiberglass Insulation in Roof (R-14)
- Radiant Shield Technology in Roof (R-38)
- Hi Density EPS Foam in Main Floor (R-14)
- Radiant Shield Technology Under Main Floor (R-38)
- Double Layer of Fiberglass Insulation in Front Wall (R-14)
- Radiant Shield Technology in Front Wall (R-38)
- Insulated Slide Room Floors (R-38)
- Insulated Bath and Bed Deck Floors (R-38)
- Heated Pass Thru Storage

INTERIOR

- Native American Glazed Cherry Hardwood Cabinet Doors
- Native American Glazed Cherry Hardwood Drawers
- Baltic Birch Residential Drawer Boxes
- Raised Cherry Panel Refrigerator Front
- 8 CU. FT. Refrigerator
- Pots-N-Pans Drawers with Full Extension Guides
- Large, Easy-To-Pull Cabinet Pull Handles
- Microwave with Vented Range Hood
- Deluxe Range with Heavy Grates
- High Arch Kitchen Faucet
- Stainless Steel Kitchen Sink
- Upgraded Residential Furniture
- Linoleum with 5-Year Warranty
- Pleated Shades
- Deluxe Power Vent Fan with Remote Lid
- High Dispersion Flush-Mount LED Ceiling Lights
- Solid Surface Kitchen Countertops

BEDROOM

- Satellite and Cable Connection
- "Stay Cool" LED Reading Lights Above Bed
- Wardrobe Closets With Drawers (Most Floorplans)
- Mirrored Wardrobe Doors
- Oversized Chest Of Drawers
- Massive Under-Bed Storage
- Night Stands with Overhead Cabinets
- Queen Bed Mattress and Designer Bedsread

BATHROOM

- Extra-Large Shower with Glass Shower Door
- Adjustable Shower Faucet
- Deluxe "Sky View" Skylight
- Dual Lever Bath Faucet
- 12V Power Vent Fan in Bath
- Hi Rise Porcelain Toilet
- Heating and Air Conditioning Vents

EXTERIOR

- Electric Front Landing Gear
- "Quiet Cool" Ducted Air Conditioner
- Generator Prep
- Happi-Jack Electric Bed and Double Sofa/Bed
- 7,000 lb. Axles
- "EZ Lube" Greasable Axle Hubs
- 16" Aluminum Wheels
- 8 Lug Wheels
- Upgraded Load Range "G" Tires
- "DURA GLOSS" Hi Temp Fiberglass Sidewalls
- 5" Truss Roof Rafters, 16" on Centers
- 3/8" "WALK ON" Roof Decking
- One-Piece TPO Roof With 12-Year Warranty
- Powder Coated 12" I-Beam
- Oversized Pass Thru Storage With Intelligent Design
- "SUPER TURN" Fiberglass Front Cap
- Undermount Spare Tire
- Electric Awning with LED Light
- "DURA GLOSS" Slam Latch Baggage Doors
- Magnetic Baggage Door Catches
- 30" Wide Radius Main Entrance Door with Gas Strut
- Large Swing Out Grab Handle
- Digital Ready TV Antenna with Booster
- Collapsible Roof Ladder
- (2) LED Garage Loading Lights
- Edge Protected, Deep Tint Windows On Sidewalls
- DOT Approved Safety Glass Windows
- Extra Large PVC Sewer Hose Storage
- Extended Drip Spouts
- Triple Entry Step with Oversized Steps
- Easy Winterization Valve and Connection
- Easy Access Low Point Drains
- Easy Access Fresh Water Drain Valve
- Upgraded Oetiker Clamp Ring Water Line Fittings

Universal Docking Center That Includes:

- Outside Shower with 15' Flex Hose
- Black Tank Flush
- Battery Disconnect
- Satellite and Cable Connection

GARAGE

- Satellite and Cable Connection
- Steel Tie Downs Bolted to Chassis
- 8' Spring Assisted Ramp Door
- 22" "BLACK DIAMOND" Protection on Walls
- Gas/Oil Resistant Flooring
- (2) Ram Air Vents
- Bunk Ladder
- Free Standing Table with Folding Legs
- Pull Down Garage Screen
- Air Conditioning Vents with Adjustable Louvers

UTILITIES

- Fuel Station with 12V Pump
- 30 Gallon Fuel Tank
- Solar Prep
- "Quiet Cool" Ducted Air Conditioner
- Digital Thermostat
- 35,000 BTU Furnace
- Gas/Electric Quick Recovery Water Heater
- Direct Spark Ignition Water Heater
- Water Heater By-Pass
- Hi Capacity Water Pump
- 50AMP (110) Power
- Detachable Power Cord
- 90AMP (12V) Converter • Dual 30# LP Bottles
- CO Detector

OPTIONS

- Onan Marquis Gold 5.5KW Gas Generator
- Dual Pane Windows
- Second "Quiet Cool" Ducted A/C

†BATTLE PACK:

- 6-Point Electric Leveling
- Rear Patio Kit
- 4-Step Aluminum Entry Stairs

ADVANTAGE PACK:

- Eternabond Construction
- High Gloss Gel Coat
- Solid Surface Countertops
- Residential Furniture
- Quad Aluminum Entry Steps
- 22 inch Diamond Plate in the garage
- 2500 Pound Garage Tie Downs

300-SERIES



*R-Values Calculated at 80° F Ambient Temperature

† Ask your local dealer for details and availability of the "Battle Pack."

DSI QUALITY CIRCLE AWARD

Prime Time Manufacturing is proud to be recognized as an industry leader in value, reliability, and overall quality by the Recreational Vehicle Dealers Association. This was accomplished by committing ourselves to "A Higher Standard" in design, construction, testing, and customer service. Check us out – we know you'll be impressed!



www.primetimerv.com
PO Box 330 • 55470 CR 1 • Elkhart, IN 46515



FROG™ the Forest River Owners' Group!

FREE MEMBERSHIP
to Forest River Owners' Group
www.forestriverfrog.com



Seal Tech Air Pressure Test



ETERNABOND®
Construction



Advanced Engineering

CUSTOMER SATISFACTION



www.ForestRiverBuyLocal.com

24/7 EMERGENCY ROADSIDE ASSISTANCE

Coach-Net®
RV Technical & Roadside Assistance

For a worry-free ownership experience Forest River includes one year of Coach-Net RV Technical & Roadside Assistance with each RV purchase. Whether new to the RV lifestyle or an experienced RV enthusiast, Forest River owners have 24/7 access to technical, operational and emergency road service coverage throughout the US & Canada. Coach-Net's fast, dependable service is just a phone call away.

Seek-A-Leak Pressure Test



65 Point Secondary PDI



ADDITIONAL SPECIFICATIONS:

GVWR (Gross Vehicle Weight Rating) - is the maximum permissible weight of the unit when fully loaded. It includes all weights, inclusive of all fluids, cargo, optional equipment and accessories. For safety and product performance do NOT exceed the GVWR.

GAWR (Gross Axle Weight Rating) is the maximum permissible weight, including cargo, fluids, optional equipment and accessories that can be safely supported by a combination of all axles.

Each Forest River RV is weighed at the manufacturing facility prior to shipping. A label identifying the unloaded vehicle weight of the actual unit and the cargo carrying capacity is applied to every Forest River RV prior to leaving our facilities. The load capacity of your unit is designated by weight, not by volume, so you cannot necessarily use all available space when loading your unit.



PRE-DELIVERY INSPECTION FACILITY

20,000 square feet of quality assurance. The bare essentials for a premium product. This state-of-the-art facility gives immediate daily feedback to production for quality assurance in every unit built.



Web Based Customer Service



Executive Quality Audits



Rain Bay

All information contained in this brochure is believed to be accurate at the time of publication. However, during the model year, it may be necessary to make revisions and Forest River, Inc., reserves the right to make all such changes without notice, including prices, colors, materials, equipment and specifications as well as the addition of new models and the discontinuance of models shown in this brochure. Therefore, please consult with your Forest River, Inc., dealer and confirm the existence of any materials, design or specifications that are material to your purchase decision.

©2016 Prime Time Manufacturing, a Division Of Forest River, Inc., a Berkshire Hathaway Company. All Rights Reserved.



Learn More
Scan this barcode using a QR Reader on your smart phone to learn more about Forest River.



A Berkshire Hathaway company.

DEALER