

VIBE
EXTREME_{LITE}
FOREST RIVER

VIBE
EXTREME_{LITE}
FOREST RIVER
WEST COAST EDITION



WE'VE GONE TO THE EXTREME!

VIBE OFFERS THE MOST EXTREME LIGHTWEIGHT LINEUP IN THE INDUSTRY.

IF YOU'RE LOOKING FOR EXTREME EFFICIENCY, EXTREME VALUE AND EXTREME FUN
THEN GOOD VIBES ARE JUST OVER THE NEXT HILL.

FLOORPLANS START AT 4400 LBS. AND MAX OUT AT 6600 LBS.







224RLS Back to Front View | Marble Decor

COUPLES COACH/NON-BUNK LINE-UP

Looking for a lightweight towable that won't break the bank or your tow vehicle? Welcome to the VIBE Extreme Lite series. Every floorplan is designed for maximum comfort and convenience. Constructed with high end finishes like stainless steel appliances, LED lighting and flat screen TV's previously only available at much higher price points, the VIBE Extreme Lite delivers exactly what you have been looking for in a lightweight and easy to tow coach. Great amenities at a great price.



224RLS Front to Back View | Marble Decor





251RKS Back to Front View | Marble Decor

MORE STORAGE
MORE SPACE
MORE VALUE...
LESS WEIGHT!



251RKS Bedroom

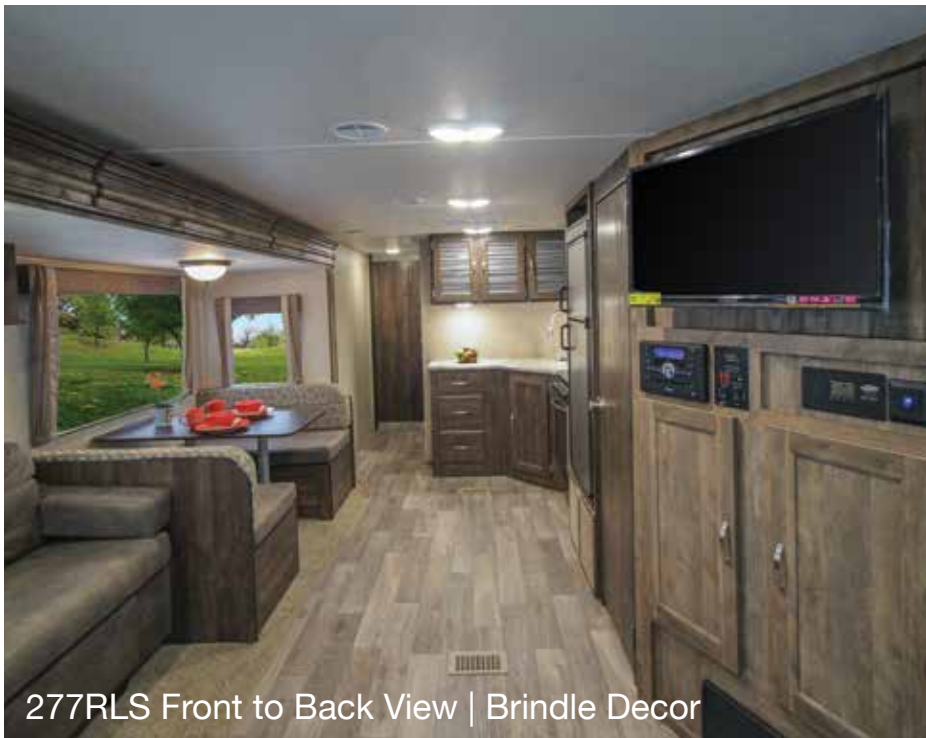




277RLS Bathroom



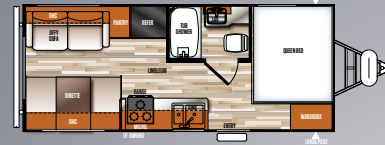
277RLS Pantry



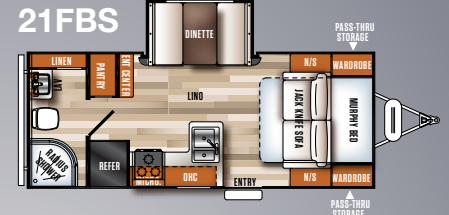
277RLS Front to Back View | Brindle Decor

COUPLES COACH/NON-BUNK FLOORPLANS

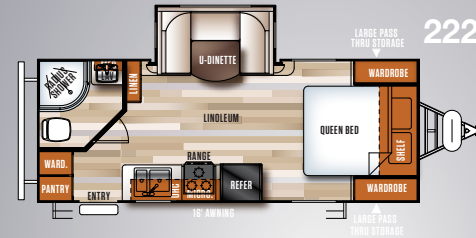
208RD



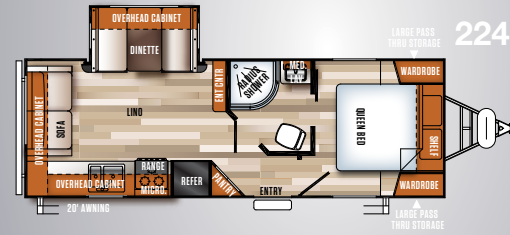
21FBS



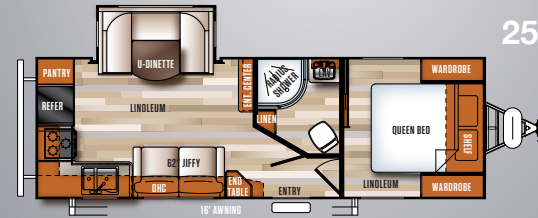
222RBS



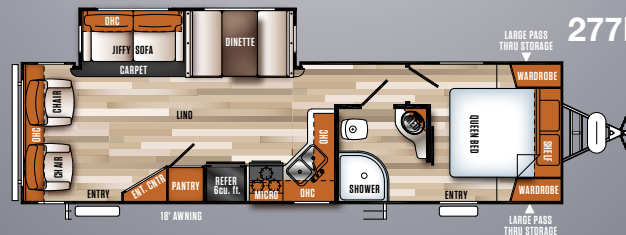
224RLS



251RKS



277RLS



BUNKHOUSE FLOORPLANS



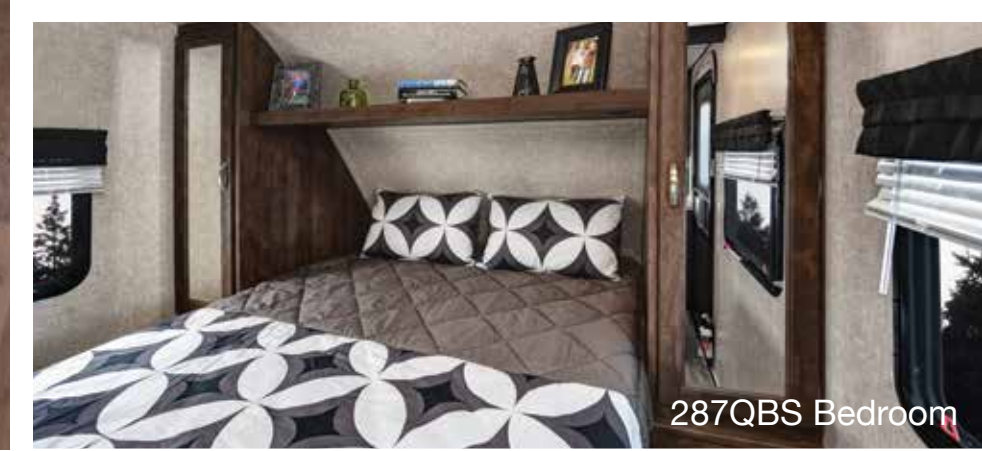
254DBH Front to Back View | Brindle Decor



254DBH Back to Front View | Brindle Decor



287QBS Back to Front View | Marble Decor



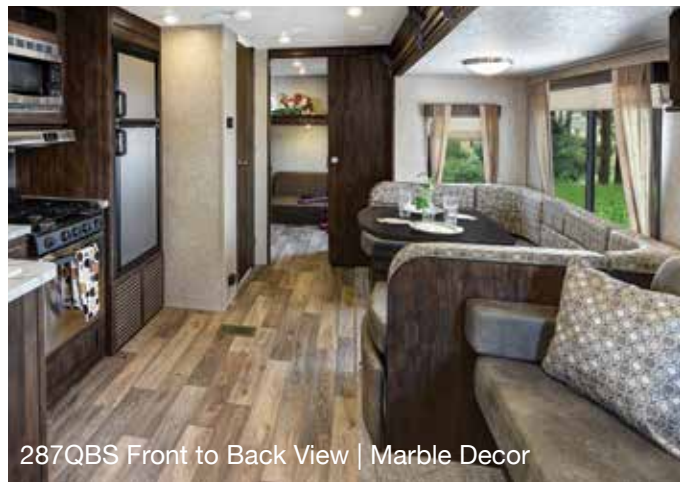
287QBS Bedroom



287QBS Bunkroom



287QBS Bath

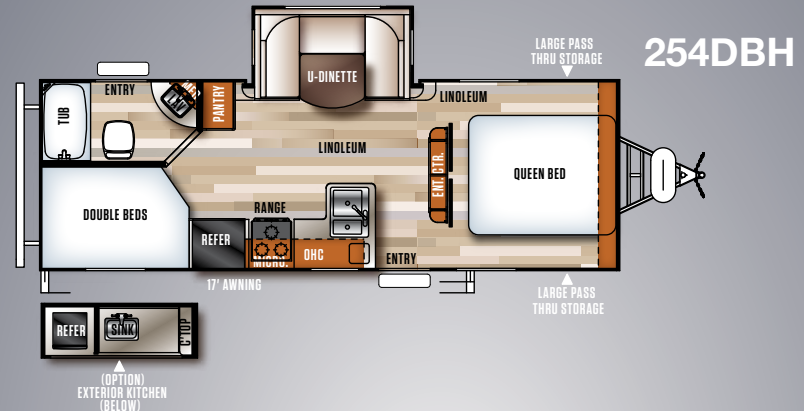


287QBS Front to Back View | Marble Decor



Exterior Kitchen Available on all Bunkhouse Floorplans

BUNKHOUSE FLOORPLANS



STANDARDS/OPTIONS/FEATURES

EXTERIOR STANDARD FEATURES

- HYPER LYTE CONSTRUCTION - AMAZINGLY LIGHT!!
- TRI-TONE GEL COAT FIBERGLASS W/ UPGRADED GRAPHICS PACKAGE
- LAMINATED "ALUMA FRAME" SIDE WALLS AND 2" LAMINATED FLOOR
- HIGH GLOSS ROLLED FIBERGLASS FRONT END
- DUCTED 13.5 BTU AIR CONDITIONING
- HIGH EFFICIENCY A/C COOLING SYSTEM (LARGER DUCT WORK)
- CABLE & SATELLITE PREP
- DIGITAL TV ANTENNA W/ BOOSTER
- EXTRA LARGE, ALUMINUM FRAMED, PASS THRU STORAGE
- ONE TOUCH ELECTRIC AWNING
- LED LIGHTED EXTERIOR SPEAKERS (2)
- XL GRAB HANDLE
- COACH-NET ROADSIDE ASSISTANCE
- RADIAL TIRES
- DUCT HEATED AND ENCLOSED UNDERBELLY
- STABILIZER JACKS
- 2- 20# LP BOTTLES
- SPARE TIRE AND CARRIER
- ALUMINUM WHEELS

INTERIOR STANDARD FEATURES

- REEDED GLASS IN KITCHEN CABINETS
- 3-BURNER COOK TOP W/ STAINLESS STEEL 22" OVEN
- LARGE DOUBLE BOWL UNDERMOUNT KITCHEN SINK
- DOMETIC DOUBLE DOOR 6 cu. ft. GAS/ELECTRIC REFRIGERATOR W/ STAINLESS FRONT
- 6 GAL. G/E DSI WATER HEATER
- DOMETIC PEDAL FLUSH TOILET
- THERMOFOIL WRAPPED KITCHEN COUNTERTOPS
- DELUXE WOOD BOOTH TABLE TOP
- FLUSH MOUNT KITCHEN SINK COVER
- HARD DOORS TO BEDROOMS FOR PRIVACY (NOT CURTAINS)
- DECORATIVE KITCHEN BACKSPLASH
- LARGE TRASH CAN W/ DESIGNATED OUT OF THE WAY AREA
- UPGRADED RESIDENTIAL STYLE CARPET
- FULL EXTENSION BALL BEARING DRAWER GUIDES
- STAINLESS STEEL KITCHEN PACKAGE
- SKYLIGHT OVER SHOWER
- BLUETOOTH MP3/DVD/CD/FM W/ SURROUND SOUND
- TEDDY BEAR SERIES BUNK MATS

- 32" FLAT SCREEN TV (21FBS, 224 RLS, 251RKS, 250BHS, 254DBH, 277RLS, 287QBS)
- 200 WATT SOLAR PANEL
- OUTSIDE SHOWER
- FANTASTIC FAN IN BATHROOM
- 15K BTU DUCTED A/C IPO 13.5K
- 50 AMP SERVICE W/ WIRE & BRACE FOR 2ND A/C
- 2ND 13.5K A/C IN BEDROOM (REQUIRES 50 AMP)

LIMITED SHOWSTOPPER FEATURES

- HIGH RISE FAUCET W/ PULL OUT SPRAYER
- BATTERY DISCONNECT
- BLACK TANK FLUSH
- SOLAR PANEL PREP
- POWER TONGUE JACK
- USB PORT PACKAGE
- LED AWNING LIGHT
- TOUCH SCREEN REMOTE
- RECESSED STOVE W/GLASS COVER
- DECORATIVE WINDOW TREATMENTS (LIVING ROOM ONLY)
- NIGHT SHADES (LIVING ROOM ONLY)
- 30" FRICTION HINGE ENTRY DOOR
- MAGNETIC LATCHES ON ACCESS DOORS
- KITCHEN COUNTER LED ACCENT STRIP LIGHTING
- LED INTERIOR LIGHTS

OPTIONS

- SECOND BUNK WINDOW
- POWER STAB JACKS
- OUTSIDE KITCHEN (BUMPER MOUNTED GRILL, FRIDGE, SINK W/DRAIN, METAL COUNTERTOP 254DBH, 287QBS)
- SKYLIGHT OVER TUB/SHOWER



LED AWNING LIGHT WITH REMOTE



UNDER COUNTER LED LIGHTING



USB PORT PACKAGE



BATTERY DISCONNECT



RESIDENTIAL WINDOW TREATMENTS



POWER TONGUE JACK



6 SPOKE ALUMINUM RIMS



UNDERMOUNT SINK/HIGH RISE FAUCET/PULL OUT SPRAYER/FLUSH SINK COVERS



WALK AROUND QUEEN BED AND BEDSPREAD



MANUAL STAB JACKS

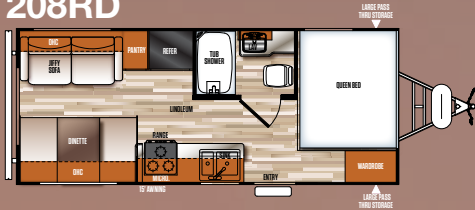


LARGEST OVEN IN ITS CLASS



BLUETOOTH MP3/DVD/CD/FM W/ SURROUND SOUND

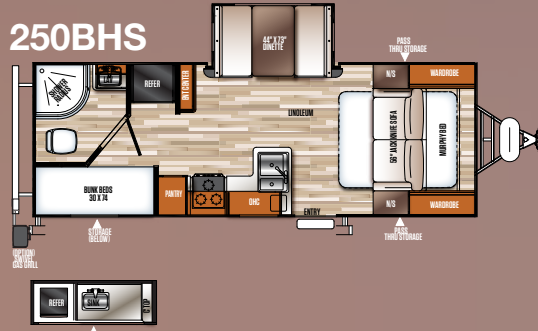
208RD



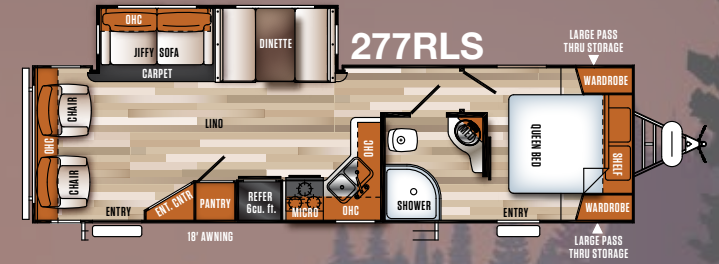
21FBS



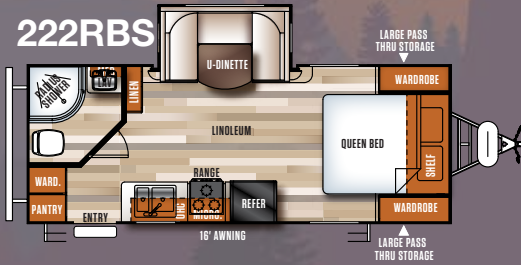
250BHS



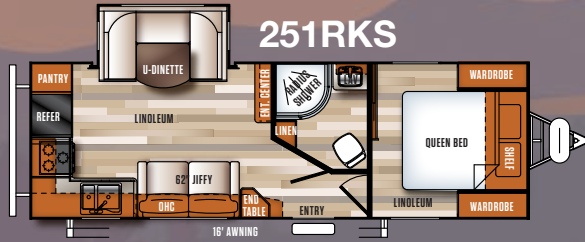
277RLS



222RBS



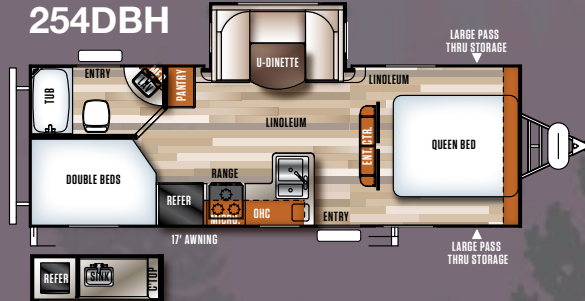
251RKS



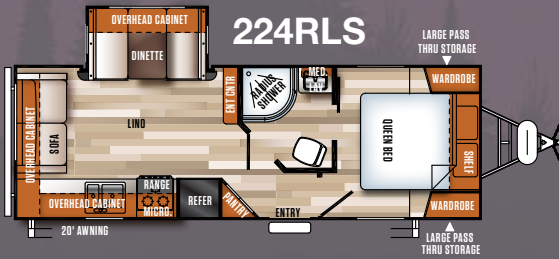
287QBS



254DBH



224RLS



VIBE
EXTREME_{LITE}
FOREST RIVER
WEST COAST EDITION

SPECIFICATIONS

MODEL	208RD	21FBS	222RBS	224RLS	254DBH	250BHS	251RKS	277RLS	287QBS
HITCH WEIGHT	540	538	468	624	619	641	530	TBD	755
AXLE WEIGHT	3717	4128	4465	4791	5599	4794	4831	TBD	5864
UVW	4257	4666	4933	5415	6218	5435	5361	TBD	6619
CCC (CARGO CAP.)	3283	2872	2535	2209	1401	2206	2169	TBD	2936
EXTERIOR LENGTH	24' 7"	25' 2"	25' 10"	28' 10"	28' 8"	27' 6"	29' 9"	35' 1"	35' 1"
EXTERIOR HEIGHT	11' 0"	11' 0"	11' 0"	11' 0"	11' 0"	11' 0"	11' 0"	11' 0"	11' 0"
FRESH WATER (gal.)	44	45	44	45	44	45	44	44	44
BLACK WATER (gal.)	33	32	33	32	33	27	33	33	32
GREY WATER (gal.)	33	32	33	64	66	59	66	66	66
AWNING SIZE	15'	15'	16'	18'	17'	18'	16'	18'	18'
TIRE SIZE	15"	14"	15"	14"	15"	14"	14"	15"	15"



PRE-DELIVERY INSPECTION FACILITY

20,000 square feet of quality assurance. The bare essentials for a premium product. This state-of-the-art facility gives immediate daily feedback to production for quality assurance in every unit built.

GVWR (Gross Vehicle Weight Rating) - is the maximum permissible weight of the unit when fully loaded. It includes all weights, inclusive of all fluids, cargo, optional equipment and accessories. For safety and product performance do NOT exceed the GVWR.

GAWR (Gross Axle Weight Rating) - is the maximum permissible weight, including cargo, fluids, optional equipment and accessories that can be safely supported by a combination of all axles.

UVW (Unloaded Vehicle Weight)* - is the typical weight of the unit as manufactured at the factory. It includes all weight at the unit's axle(s) and tongue or pin and LP Gas. The UVW does not include cargo, fresh potable water, additional optional equipment or dealer installed accessories.

*Estimated Average based on standard build optional equipment.

CCC (Cargo Carrying Capacity)** - is the amount of weight available for fresh potable water, cargo, additional optional equipment and accessories. CCC is equal to GVWR minus UVW. Available CCC should accommodate fresh potable water (8.3 lbs per gallon). Before filling the fresh water tank, empty the black and gray tanks to provide for more cargo capacity.

** Estimated average based on standard build optional equipment

Each Forest River RV is weighed at the manufacturing facility prior to shipping. A label identifying the unloaded vehicle weight of the actual unit and the cargo carrying capacity is applied to every Forest River RV prior to leaving our facilities.

The load capacity of your unit is designated by weight, not by volume, so you cannot necessarily use all available space when loading your unit.

All information contained in this brochure is believed to be accurate at the time of publication. However, during the model year, it may be necessary to make revisions and Forest River, Inc., reserves the right to make all such changes without notice, including prices, colors, materials, equipment and specifications as well as the addition of new models and the discontinuance of models shown in this brochure. Therefore, please consult with your Forest River dealer and confirm the existence of any materials, design or specifications that are material to your purchase decision.

CUSTOMER SATISFACTION



www.ForestRiverBuyLocal.com

24/7 EMERGENCY ROADSIDE ASSISTANCE

For a worry-free ownership experience Forest River includes one year of Coach-Net RV Technical & Roadside Assistance with each RV purchase. Whether new to the RV lifestyle or an experienced RV enthusiast, Forest River owners have 24/7 access to technical, operational and emergency road service coverage throughout the US & Canada. Coach-Net's fast, dependable service is just a phone call away.

Coach-Net[®]

VIBE EXTREME_{LITE} WEST COAST EDITION



Learn More
Scan this barcode using a QR Reader on your smart phone to learn more about Forest River.



A Berkshire Hathaway company.

VIBE/Forest River Inc.
30725 Diamond Hill
Harrisburg, OR 97446
(541)-995-3447
www.forestriverinc.com
www.forestriveraccessories.com