

ROCKWOOD

SIGNATURE ULTRA LITES

ROCKWOOD
PROVIDING OUTDOOR FUN SINCE
1974



ROCKWOOD SIGNATURE ULTRA LITES



WINDJAMMERS
TRAVEL TRAILERS
FIFTH WHEELS
BED SLIDE FIFTH WHEELS



OVER 40 YEARS OF EXCELLENCE

FROM HUMBLE BEGINNINGS, ROCKWOOD HAS EMERGED AS AN INDUSTRY LEADER IN THE MANUFACTURING OF LIGHT WEIGHT TRAVEL TRAILERS, FIFTH WHEELS AND CAMPING TRAILERS.

Located in Millersburg, IN since 1974, Rockwood has been supported by this community and the local families residing there. These families have helped provide the hundreds of workers that have brought their dedication to quality workmanship, respect for their fellow workers and a commitment to an uncompromising work ethic to make a major contribution to this company's success. Founded on the principle of providing superior value and service while remaining in tune with customer's preferences, Rockwood has become the ultimate luxury product in the light weight trailer market, proudly showcasing more innovative floor plans, appealing features and refined interior appointments than any others in its class.





TODAY, ROCKWOOD REMAINS COMMITTED TO INSURING THAT OUR CUSTOMERS ENJOY THEIR CAMPING EXPERIENCES.

Through the utilization of our experienced work force, "state of the art" lamination facility, modern production plants and detailed assembly processes our aim is to continue to provide our customers with the best built product possible at an unmatched value.



THE TRADITIONAL ROCKWOOD WINDJAMMER. SIGNATURE ULTRA LITE TRAVEL TRAILERS AND FIFTH WHEELS CONTINUE TO PROVIDE UNSURPASSED VALUE AND COMFORT.

The spacious interiors offer numerous windows, 83" vaulted ceilings with directional vented air conditioning and extensive interior LED lighting throughout. Rich with appointments like the flush mount stainless steel sink, a stove top with glass cover, 22" oven and distinctive Maple or Driftwood cabinets with solid wood doors and drawer fronts throughout add to the tremendous value provided.



Standard White Exterior

Featuring an aluminum framed with vacuum bonded construction, high gloss fiberglass exterior and deluxe graphics, the Signature Ultra Lite and Windjammer are among the best constructed, most well insulated light weight trailers on the market today.



Standard White Exterior

Rockwood Fifth Wheel models are loaded with features like the Reese Revolution hitch, power stabilizer jacks, slam latches on most storage doors and much more.



8299BS

8280WS

INTERIOR COLORS: STERLING / MAPLE



A NEW STANDARD.



Optional Champagne Exterior

To set a new standard, Rockwood offers a group of appealing features to enhance the appearance of the Signature Ultra Lite & Windjammer series. Rockwood now offers more standard features like raised panel cabinet doors, * Corian kitchen counter tops and under mount stainless steel sinks, plus residential soft close drawer guides. Need head room? We raised the bar. All travel trailer and Windjammers are now three inches taller.

Other exciting "Standards" include entertainment centers and control panels featuring a smart phone app allowing you to control the lighting, slide outs,

check your tank levels or turn on your water pump. Another app allows you to control the entertainment center and sound system, no use in trying to find that remote.

High gloss white fiberglass is standard with the Champagne exterior as an option, both will have exterior "Standards" like bonded frameless windows, polished alloy wheels, a colored keyed roof and a soft mocha front cap, plus check out those graphics and the automotive front windshields on most of our Travel Trailers... There is style and value in all we do!

ROCKWOOD

WINDJAMMERS

Aerodynamic profiles make all the difference. "V" nose design to utilize every possible space for interior room and storage. While the aerodynamic, aluminum framed, vacuum-bonded exteriors can be towed by a wide variety of vehicles on the market, the available standards and options provide extensive potential customization for each individual consumer.

3025W

INTERIOR COLORS: JASPER / MAPLE





Optional Champagne Exterior

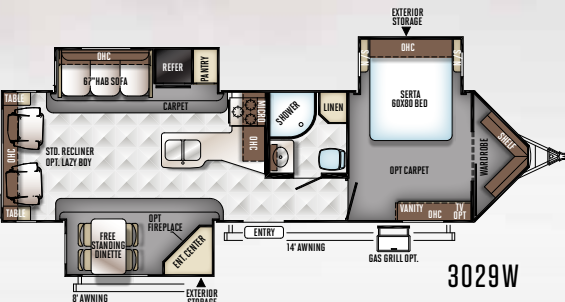
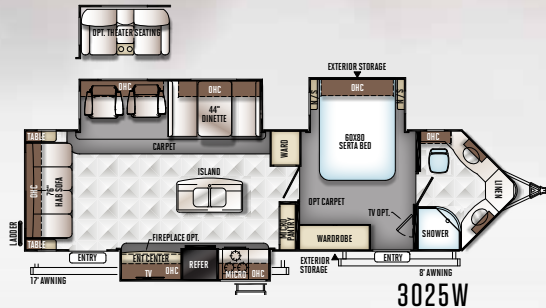
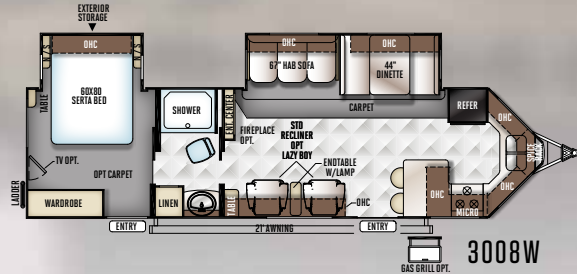
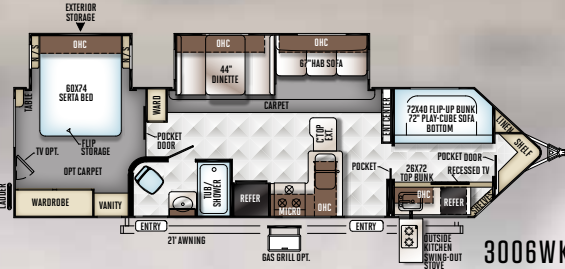
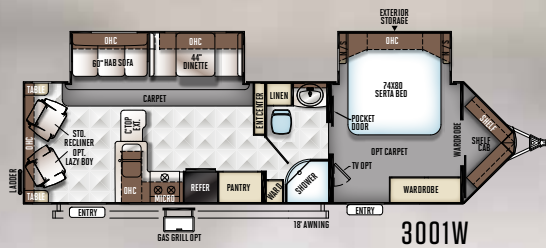
SPECIFICATIONS & FLOORPLANS

	3001W	3006WK	3008W	3025W	3029W
Unloaded Vehicle Weight*	7674	7671	7482	8093	7772
Base Dry Hitch Weight	806	942	897	887	1067
Base Dry Axle Weight	6809	6670	6526	7147	6646
Cargo Capacity	1132	1271	1415	1294	1495
Length (Hitch To Bumper)	35' 1"	34' 7"	34' 7"	35' 1"	35'
Width	96"	96"	96"	96"	96"
Height With A/C	136"	136"	136"	136"	136"
Interior Height	83"	83"	83"	83"	83"
Fresh Water Capacity	45 gal	45 gal	45 gal	45 gal	45 gal
Gray Water Capacity	45 gal	90 gal	75 gal	90 gal	45 gal
Black Water Capacity	45 gal	45 gal	45 gal	45 gal	45 gal

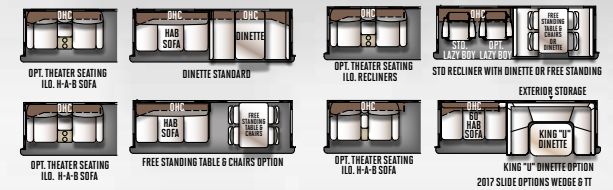
The Unloaded Vehicle Weight (UVW) listed represents the weight of one trailer with that model's standard equipment including the content of specified Option Packages. * See back cover for further specification definitions.



WINDJAMMERS



SUPER SLIDE OPTIONS





SIGNATURE ULTRA LITE

TRAVEL TRAILERS

Beautiful spacious interiors come standard. The Signature series has many outstanding features to enhance your camping experience. The open floorplans and generous storage space allows extra room for those extra things you want to bring along. And sleeping on the comfortable Serta bed, you'll forget you were in the great outdoors. The spacious interior and picturesque view through the many windows enable you to experience your surroundings in the comfort of your Signature Ultra Lite travel trailer.

8328BS

INTERIOR COLORS: WINSTON / MAPLE



SPECIFICATIONS & FLOORPLANS

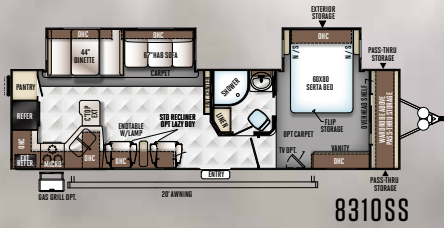
	8310SS	8311WS	8312SS	8324BS	8325SS	8326BHS	8327SS	8328BS	8329SS	8335BSS
Unloaded Vehicle Weight *	7787	7847	7974	8827	8112	8363	8197	8451	8103	7854
Base Dry Hitch Weight	1154	955	970	1290	990	932	990	1140	965	1159
Base Dry Axle Weight	6574	6833	6945	7478	7063	7372	7148	7252	7079	6636
Cargo Capacity	1567	1108	996	1463	1478	1519	1593	1539	1562	1705
Length (Hitch To Bumper)	35'-5"	34'-9"	34'-9"	35'-5"	34'-9"	35'-5"	35'-5"	35'-5"	34'-9"	35'-11"
Width	96"	96"	96"	96"	96"	96"	96"	96"	96"	96"
Height With A/C	136"	136"	136"	136"	136"	136"	136"	136"	136"	136"
Interior Height	83"	83"	83"	83"	83"	83"	83"	83"	83"	83"
Fresh Water Capacity	45 gal	45 gal	45 gal	45 gal	45 gal	45 gal	45 gal	45 gal	45 gal	45 gal
Gray Water Capacity	90 gal	45 gal	45 gal	45 gal	90 gal	63	90 gal	108	45 gal	90 gal
Black Water Capacity	45 gal	45 gal	45 gal	45 gal	45 gal	45 gal	45 gal	45 gal	45 gal	45 gal

The Unloaded Vehicle Weight (UVW) listed represents the weight of one trailer with that model's standard equipment including the content of specified Option Packages.
* See back cover for further specification definitions.



Standard White Exterior

SIGNATURE ULTRA LITE TRAVEL TRAILERS



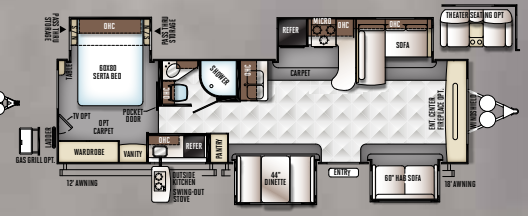
8310SS



8311WS



8312SS



8324BS



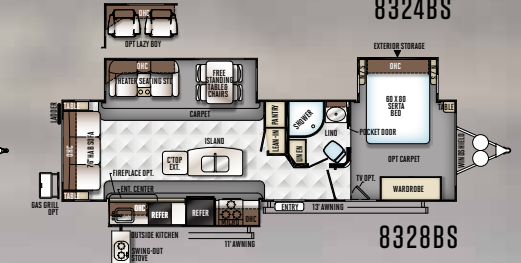
8325SS



8326BHS



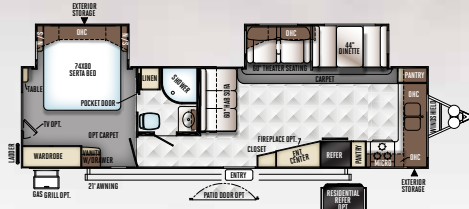
8327SS



8328BS

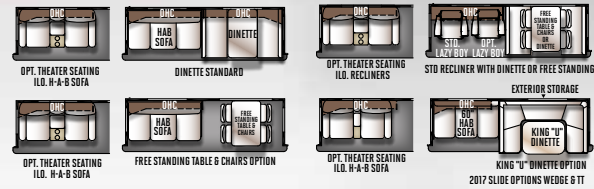


8329SS



8335BSS

SUPER SLIDE OPTIONS



Optional Sliding Patio Door (8335BSS Only)

SIGNATURE ULTRA LITE

FIFTH WHEELS

Full size comforts in a light weight Fifth Wheel. The ample counter top, generous cabinet space and plush furniture bring the feeling of home to life on the road. The Rockwood Signature Ultra Lite, making camping a memorable experience. All Rockwood Fifth Wheels come standard with the Reese Revolution Hitch allowing you to tow with almost any size truck bed.



Standard White Exterior

8280WS

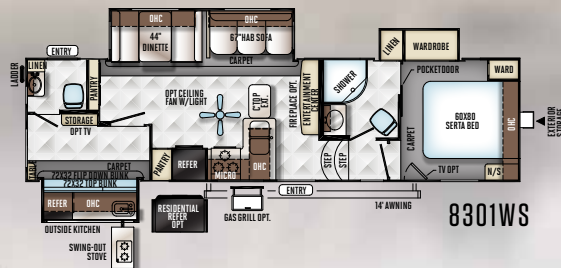
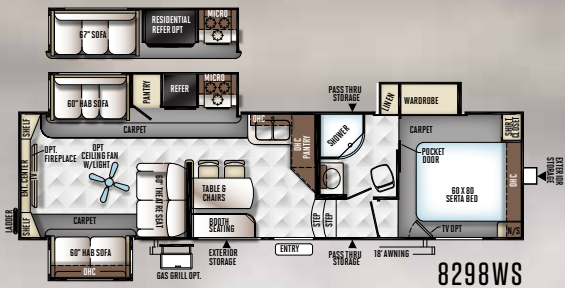
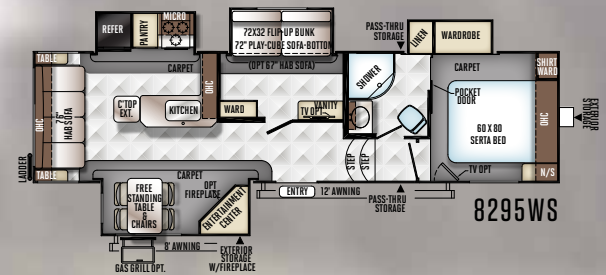
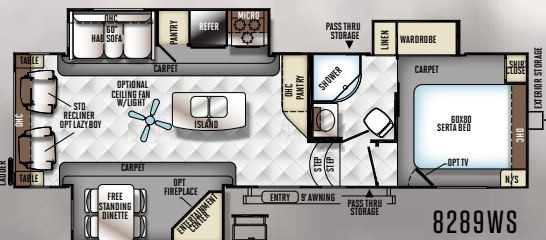
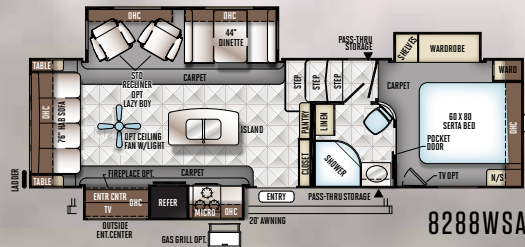
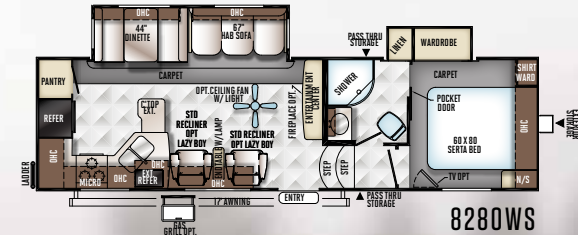
INTERIOR COLORS: STERLING / MAPLE



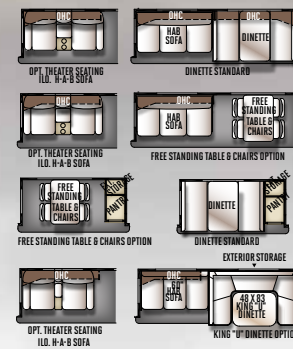
SPECIFICATIONS & FLOORPLANS

	8280WS	8288WSA	8289WS	8295WS	8298WS	8301WS
Unloaded Vehicle Weight *	8707	8539	8866	9133	9156	9183
Base Dry Hitch Weight	1336	1530	1420	1470	1625	1288
Base Dry Axle Weight	7312	6950	7387	7604	7472	7836
Cargo Capacity	1279	1441	1554	1537	1619	1505
Length (Hitch To Bumper)	31'-11"	31'-11"	31'-11"	33'-6"	33'-6"	33'-6"
Width	96"	96"	96"	96"	96"	96"
Height With A/C	156"	156"	156"	156"	156"	156"
Fresh Water Capacity	45 gal	45 gal	45 gal	45 gal	45 gal	45 gal
Gray Water Capacity	90 gal	75 gal	90 gal	90 gal	90 gal	108 gal
Black Water Capacity	45 gal	45 gal	45 gal	45 gal	45 gal	90 gal

The Unloaded Vehicle Weight (UVW) listed represents the weight of one trailer with that model's standard equipment including the content of specified Option Packages.
* See back cover for further specification definitions.



SUPER SLIDE OPTIONS



With the Reese Revolution standard on all Rockwood Fifth Wheel models, you can tow with almost any size truck bed and have more free space to carry your camping gear.



SIGNATURE ULTRA LITE

BED SLIDE FIFTH WHEELS

Sometimes, you need just a little more room. Rockwood has responded to a demand for more space in their popular Signature Ultra Lite Fifth Wheel trailers with the introduction of two new models. With a 12 cubic foot side by side refrigerator (8299BS only) and bedrooms with “walk around” Residential Queen Bed Slides, Full Width Closets and a Dresser full of drawers, these models provide more space without the necessity of having to jump way up in truck size.



Standard White Exterior

8299BS

INTERIOR COLORS: WINSTON / DRIFTWOOD



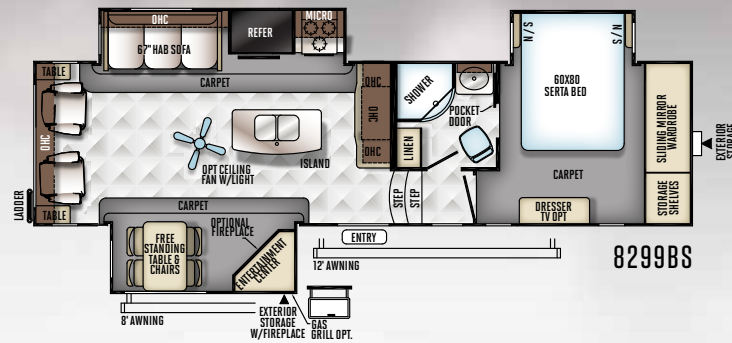
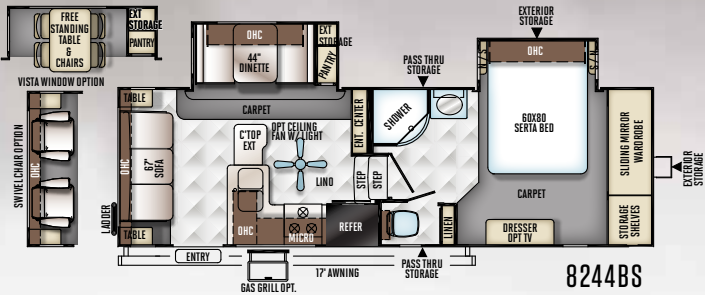
SPECIFICATIONS & FLOORPLANS

	8244BS	8299BS
Unloaded Vehicle Weight *	7674	9485
Base Dry Hitch Weight	1292	1527
Base Dry Axle Weight	6323	7899
Cargo Capacity	1518	1642
Length (Hitch To Bumper)	28' 2"	33'-10"
Width	96"	96"
Height With A/C	155"	156"
Fresh Water Capacity	45 gal	45 gal
Gray Water Capacity	45 gal	90 gal
Black Water Capacity	45 gal	45 gal

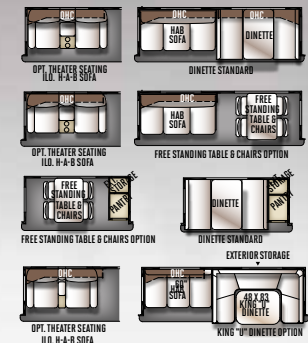
The Unloaded Vehicle Weight (UVW) listed represents the weight of one trailer with that model's standard equipment including the content of specified Option Packages. * See back cover for further specification definitions.



BED SLIDE FIFTH WHEELS



SUPER SLIDE OPTIONS

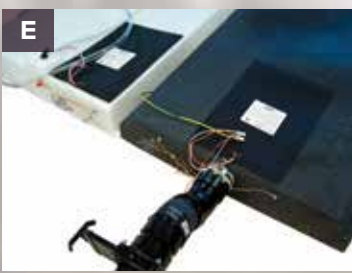


POPULAR FEATURES

Just a few features that make us great. Rockwood takes careful consideration to each feature added into each product produced. Every detail is considered ranging from extra sleeping room, storage, comfort and convenience. Take time to review the features listed below and match them with the competition's products. We're confident you'll discover Rockwood is the superior choice.



- A** Power Awning with tilt adjustment and LED indirect lighting
- B** 55", 42" or 32" LCD TV w/ 5.1 Dolby Speaker System with "Bluetooth" Technology (Selected Models)
Electric Fireplace/Heater (Std./Opt. Select Models)
- C** Radius Glass Door Shower (N/A Models with Tub Bases)
- D** Free-standing chair with seat storage and table with extension (Opt./Std. select models)
- E** Deluxe Tri-Fold Sleeper Sofa
- F** Deluxe Tri-Fold Sleeper Sofa w/ Comfortable, easy set-up Queen bed (Std. models w/ 67" HAB Sofa)
(Full Size Bed, Std. models with King-U-Dinette option)



A Rear camera prep. (Std. all models) The Furion observation camera system with digital wireless technology is sold separately.

B State-of-the-art control panel with available App for download on the App store and Google Play

C Day night shades (Std.)

D The Reese Revolution pin box provides:
1) Full 90 degree worry free turning,
2) Eliminates the need for a slider,
3) Greatly enhances maneuverability
www.reeseprod.com (Std.)

E Heated holding tanks with 12 Volt heat pads secured to the bottom No need to use the furnace to heat tanks when traveling. (Std.)

F Solar Panel Prep (Std. All Models) The Zamp 40 amp. portable solar panel shown is sold separately.

G 60" Heated theatre Seating. Fabric matched to decor.

H Standard push back recliner. Fabric matched to decor. (Most Models)

I Lazy Boy swivel recliner. Fabric matched to decor. (Opt. Available ILO all units with standard push back recliner)

J Heated theatre seating per plan where available. Fabric matched to decor. (Std.) 8292BS (Available ILO standard recliner (Opt. w/ 3025W, 8325SS, 8288WSA, 8292BS Only) (ILO 67" HAB sofa only all models except 3029W, 8329SS, 8265WS, 8288WS, 8292BS, 8299BS)

SOFA & CHAIR LEATHER APPEARANCE, DINETTE CUSHIONS, VALANCE ARMS & ACCESSORIES

VALANCE TOP, PILLOWS & DINETTE INSERT



JASPER

CURTAINS

SOFA CLOTH

VALANCE TOP, PILLOWS & DINETTE INSERT



STERLING

CURTAINS

VALANCE ARMS, DINETTE SEATS, CHAIRS & ACCESSORIES

SOFA & CHAIR LEATHER APPEARANCE, DINETTE CUSHIONS, VALANCE ARMS & ACCESSORIES

VALANCE TOP, PILLOWS & DINETTE INSERT



WINSTON

CURTAINS



DRIFTWOOD DÉCOR
STANDARD



MAPLE DÉCOR
OPTION



STANDARD
FLOOR COVERING



OPTIONAL
FLOOR COVERING



CARPET

POPULAR FEATURES

ROCKWOOD SUPER ULTRA LITE

QUALITY CONSTRUCTION

Just a few features that make us great. Quality built trailers always bring the same results: long-lasting products you can depend on to enjoy with your family year after year. These are some of our highlights.



A Glued and screwed wood cabinetry

B Aluminum dinette frames for added strength and weight savings

C Nitrogen filled tires for less air pressure fluctuation and a safer ride

D Extra large dinette storage drawers and full extension metal drawer guides in the kitchen

E Dexter Torflex Axles:
• Independent wheel suspension and self-damping action
• Rubber cushioning eliminates metal-to-metal contact.
• Forged torsion arm for maximum strength

Models are also equipped with E-Z Lube® System and Nev-R-Adjust® Brakes.

F Enclosed underbelly protects trailer components as well as increasing aerodynamics

G Aluminum Frame Construction with high gloss fiberglass exterior and deluxe graphics

ROOF CONSTRUCTION



Vacuum-bonded radius roof with vaulted ceiling providing superior insulation and more interior height.



4" thick roof with built in insulated A/C ducts



Built strong to enable you to conveniently perform periodic roof maintenance.

WALL STRENGTH



Structurally engineered materials makes our vacuum-bonded walls some of the strongest in the industry.

VACUUM-BONDED LAMINATED CONSTRUCTION



Rockwood is one of only a few manufacturers with six sided aluminum framing. Vacuum bonded walls and roof to ensure a well-insulated, light weight, strong structural trailer.

STANDARDS & OPTIONS

ROCKWOOD WINDJAMMER, SIGNATURE ULTRA LITE TRAVEL TRAILERS & FIFTH WHEELS

MODELS	W	TT	FW	MODELS	W	TT	FW	MODELS	W	TT	FW
STANDARD PACKAGES INCLUDE:	PKG. C	PKG. B	PKG. A	Torsion Axle, Rubber-Ryde Suspension	S	S	S	CSA	0	0	0
Molded, Wrap-around Front Cap (Pkg. A and C Only)	S	--	S	Polished Alloy Wheels	S	S	S	Tablet Control Panel	0	0	0
Automotive Windshield (Pkg. B only) (N/A 8310SS)	S*	S*	--	Spare Tire Carrier & Cover	S	S	S	Battery Disconnect Switch	S	S	S
Fiberglass Exterior w/ High Gloss Finish	S	S	S	Nitro Filled Tires	S	S	S	55 Amp Converter With Charger	S	S	S
Aluminum Bed and Dinette Base	S	S	S	Slam Latch Baggage Doors and Magnetic Door Holds	S	S	S	LED 12 Volt Interior Lighting	S	S	S
6 Sided Aluminum Cage Construction	S	S	S	Rear Observation Camera Prep w/ Molded Mounting Plate	S	S	S	Flush Mount Ceiling LED 12 Volt Interior Lighting w/ Multiple Switches	S	S	S
Vacuum Laminated 1 Piece Roof and Walls	S	S	S	Solar Panel Prep	S	S	S	Interior Floor Light by Entrance Door	S	S	S
Tinted Bonded Frameless Windows	S	S	S	Rear Ladder	S	S	S	Directional Reading LED Lights on Most Sofa Slides	S	S	S
Power Awning w/ Adjustable Rain Dump and LED Light Strip	S	S	S	Black Tank Flush	S	S	S	Residential Dome Style LED Lights Over Sofa and Table	S	S	S
Enclosed Underbelly	S	S	S	INTERIOR FEATURES				Upgraded Recessed LED Lighting Around Medicine Cabinet	S	S	S
Reese Revolution Pin Box Hitch (Pkg. A Only)	--	--	S	Driftwood Interior	S	S	S	Digital AM/FM/DVD w/ "Bluetooth" Technology	S	S	S
Power Landing Legs & Stabilizer Jacks (Pkg. A Only)	--	--	S	Maple (w/ Solid Maple Glaze Finished Cabinet Doors) Interior	0	0	0	2nd Digital AM/FM/DVD (3006WK, 8311WS, 8312SS, Only)	S*	S*	S*
4 Frame Mounted Stabilizer Jacks (Pkg. B and C Only)	S	S	S	Decorative Slide Out Fascia	S	S	S	MP3 Player Hook-Up	S	S	S
13,500 BTU Ducted A/C	S	S	S	Decorative Chair Rail Trim in Slide Outs	S	S	S	LCD TV Mounted in Bedroom With Outside Mounting			
Upgraded 22" Gas Oven (18" Oven 8244BS)	S	S	S	Decorative Cove Trim Along Ceiling and Overhead Cabinets	S	S	S	Bracket (Std. on TT Models w/ Center Entertainment Only)	S*	S*/0*	0
Microwave Oven	S	S	S	Screwed and Glued Cabinetry	S	S	S	LCD TV Mounted in Bunk Room (Std. 3006WK, 8311WS)	S	S*/0*	S*/0*
Recessed Cooktop and Oven w/ Flush Mount Cover	S	S	S	Solid Wood and Raised Panel Doors and Drawers	S	S	S	Jack Knife Sofa (Std. 8326BHS 2nd Sofa, 8244BS, 8295WS)	--	S*	S*
Hidden Hinge Cabinet Doors	S	S	S	Upgraded Cabinetry Hardware	S	S	S	Deluxe Tri-Fold Sleeper Sofa w/ Storage (N/A w/ 8244BS)			
Residential Full Extension Metal Soft Close Drawer Guides	S	S	S	Engineered Mold and Mildew Resistant Floor Covering	S	S	S	(Opt. 8311WS, 8312SS, 8326BHS 2nd Sofa)	S*	S/0*	S*
Extra Large Double Door 2 Way Refrigerator	S	S	S	Bedroom Carpet	0	0	S	Swivel Rocker Chair (Opt. 8244BS ILO Sofa)	--	--	0*
Solid Surface Corian Kitchen Countertops	S	S	S	Floor Ducted Furnace	S	S	S	Push Back Recliner	S*	S*	S*
Real Tile Backsplash	S	S	S	15,000 BTU Ducted Roof Air	0	0	0	Lazy Boy Swivel Recliner Option: Available ILO All Units			
Flush Mount Stainless Steel Sinks With "High Rise" Lift-Off	S	S	S	2nd Roof A/C w/ Chill Chaser Heat Strip in Bedroom and 50 Amp				With Standard Pushback Recliner	0	0	0
6 Gallon Quick Recovery Auto Ignition Gas/Electric Water Heater	S	S	S	Service and Digital Dual Thermostat	0	0	0	Lazy Boy Swivel Recliner Option: ILO Theater Seating (8326BS only)	--	0*	--
Residential Serta Mattress Upgrade	S	S	S	Fireplace (Std. 8325SS) (Required 8326BS, 8324BS, 8298WS,				Theater Seating: Available ILO Standard Recliner (Std. 8298WS,			
Outside Speakers	S	S	S	8301WS, 8335BSS, 8280WS) (Opt. 3008W, 3025W, 3029W				8335BSS) (Opt. w/ 3025W, 8325SS, 8326BS, 8288WSA Only)			
LCD TV With 5.1 Digital Dolby Surround Sound Speaker System				8288WSA, 8289WS, 8299BS, 8329SS)	0*	S*/0*	0*	(ILO 67" HAB Sofa Only All Models Except 3029W, 8298WS,			
and Multi-directional Antenna	S	S	S	110V Ceiling Fan	--	--	0	8288WSA, 8289WS, 8299BS) (ILO Chaise Sofa 8324BS)	0*	S*/0*	S*/0*
Multi Zone Stereo w/ DVD/CD/AM/FM and Bluetooth Control	S	S	S	Carbon Monoxide Detector	S	S	S	Day/Night Shades	S	S	S
Touch Button Control Panel w/ App Control	S	S	S	12 Volt Power Plug With USB Charging Port	S	S	S	Deluxe Interior Window Treatment	S	S	S
Thermostatically Controlled Heated Holding Tanks	S	S	S					44" Family Style Dinette (N/A w/ 3029W, 8327SS, 8326BS,			



MODELS	W	TT	FW
8329SS, 8289WS, 8295WS, 8298WS, 8299BS)	S*	S*	S*
48" X 84" Spacious King-U-Style Dinette (N/A w/ 3029W, 8325SS, 8327SS, 8329SS, 8324BS, 8244BS, 8288WSA, 8289WS, 8295WS, 8298WS, 8299BS)	S*/O*	O*	O*
Free Standing High Pressure Laminated Table With Swing Level Leg	S	S	S
Free Standing Table and Chairs (Std. 3029W, 8328BS, 8329SS, 8289WS, 8295WS, 8298WS, 8299BS)	O*	S*/O*	S*/O*
Stainless Steel Appliances	O	O	O
Raised Refrigerator Panels (N/A 8299BS)	O	O	O*
Large Auto Gas/Electric Refrigerator	S	S	S
12 Cubic Foot Auto Gas/Electric Refrigerator W/ Stainless Steel Panels (8299BS Only)	--	--	S*
Residential Refrigerator w/ Inverter (Opt: 8335BSS, 8301WS, 8298WS)	--	O*	O*
Three Burner High Output Gas Range with Glass Top Cover	S	S	S
Water-Pur Filtration System	S	S	S
Counter Top Extension (N/A: 3008W, 3025W, 3029W, 8335BSS, 8327SS, 8329SS, 8288WSA, 8289WS, 8298WS, 8299BS)	S*	S*	S*
Trash Can in Kitchen (Most Models)	S	S	S
Tub Surround	S	S	S
Radius Glass Door Shower (N/A 3006WK, 8312SS, 3008W)	S*	S*	S
Large Shower w/ Sliding Glass Door (Std. 3008W)	S*	--	--
Bathroom Skylight	S	S	S
Interior Gas and Electric Switches	S	S	S
Water Heater By-Pass Kit	S	S	S
Residential Style Porcelain Bowl Foot Flush Toilet	S	S	S
Maxxair® Ventilation Fan and Vent Cover	S	S	S
Maxxair® Ventilation Fan w/ Power Lid and Vent Cover	--	--	S

MODELS	W	TT	FW
Extra Maxxair® Ventilation and Vent Cover	O	O	O
King Bed Slide (30WRLS, 8335BSS Only)	S*	S*	--
EXTERIOR FEATURES			
Fully Aluminum Frame (Floor, Sidewall, & Roof)	S	S	S
Insulation Factors R-7 Side Wall, R-12 Floor and R-14 Roof	S	S	S
Radius Roof With Vaulted 83" Interior Ceilings	S	S	S
Livingroom Slide Out 73" Height For Easier Access to Seating Area	S	S	S
One Piece Seamless Roofing Membrane	S	S	S
TV Antenna w/ Cable & Satellite Hook-Up	S	S	S
Bike Rack Ladder Attachment	O	O	O
Rear Bike Deck (350 lbs. Max Load) (8299BS Only)	--	--	O*
Laminated Fiberglass Sidewalls With High Gloss Finish	S	S	S
Laminated Champagne Color Fiberglass Sidewalls With High Gloss Finish and Color Keyed Roof	O	O	O
Electric Slide-Out(s)	S	S	S
Decorative Frame Skirting	S	S	S
Distinctive Black Exterior Trim	S	S	S
Power Awning With Adjustable Rain Dump and LED Lighting	S	S	S
Shielded Awning Covers	O	O	O
Awning Slide Topper	O	O	O
30" Primary Entrance Door (Most Models)	S	S	S
Friction Hinge Entrance Door	S	S	S
Sliding Glass Patio Door (8335BSS Only)	--	O*	--
Lighted Entry Step	S	S	S
Large Grab Handles	S	S	S
Tinted Bonded Frameless Windows	S	S	S
Thermo Pane Window Upgrade	O	O	O

MODELS	W	TT	FW
Vista Slide Windows w/ Free Standing Table and Chairs	S*/O*	S*/O*	S*/O*
Outside Gas Grill and Worktable	O	O	O
Outside Grill Prep w/ LP Hookup and Backer	S	S	S
Outside Shower	S	S	S
Front Outside "Trunk" Storage Separated From Heated Pass Thru Storage Compartment	--	--	S
Outside Antifreeze Inlet for Convenient Winterizing	S	S	S
Slam Latches on Most Exterior Storage Doors	S	S	S
Slam Latch on Both Side Pass Thru Storage Doors & Front Compartment Door	--	--	S
Slam Latch on Pass Thru Storage Doors (Models w/ Front Bedrooms Only)	--	S*	--
Magnetic Storage Door Latches	S	S	S
Two 30 lb Gas Bottles	S	S	S
Molded Bottle Cover	--	S	--
Enclosed Gas Bottles w/ Storage Door Access	S	--	S
Surface Coated Steel I-Beam Frame	S	S	S
Power Front Jack	O	O	S
4.0 Leveling Jacks	O	O	O
Easy Lube Axles	S	S	S
15" Tires With Triple Step	S	S	S

STANDARDS & OPTIONS

W = WINDJAMMER, TT = SIGNATURE ULTRA LITE TRAVEL TRAILER, FW = SIGNATURE ULTRA LITE FIFTH WHEEL

S = STANDARD, O = OPTIONAL, -- NOT AVAILABLE, * = SELECTED MODELS



PRE-DELIVERY INSPECTION FACILITY

20,000 square feet of quality assurance. The bare essentials for a premium product. This state-of-the-art facility gives immediate daily feedback to production for quality assurance in every unit built.



Forest River, Inc. encourages our customers to purchase their Forest River products from a local dealership whenever possible for the following reasons:

- 1) Forest River, Inc. dealers are independently owned and operated businesses so priority service and scheduling is at their discretion and is often provided to customers that purchased their unit at that dealership.
- 2) Purchasing locally allows customers to establish meaningful relationships with a dealer, enhancing the RV experience through assistance with product questions, user tips or RV regulations for your state or country, and much more!
- 3) Canadian customers must meet requirements to bring an RV purchased out of the country to their home. These requirements may involve additional inspections and certifications, taxes and fees. Your local Canadian Dealer is a professional at meeting these requirements.
- 4) Scheduling timely warranty repairs and adjustments through a local dealership provides far greater flexibility and convenience to you, the customer!

It is the goal of Forest River, Inc. that all of our RV owners fully enjoy the RV experience and that customer satisfaction meets or exceeds their expectations!

24/7 EMERGENCY ROADSIDE ASSISTANCE

For a worry-free ownership experience

Forest River includes one

year of Coach-Net RV Technical & Roadside Assistance with each RV purchase. Whether new to the RV lifestyle or an experienced RV enthusiast, Forest River owners have 24/7 access to technical, operational and emergency road service coverage throughout the US & Canada.

Coach-Net's fast, dependable service is just a phone call away.

Coach-Net®
RV Technical & Roadside Assistance

LOOK FOR OUR
OTHER POPULAR
LINES OF ROCKWOOD
CAMPING TRAILERS.



Rockwood Ultra V, Ultra Lite Travel Trailer & Fifth Wheels



Rockwood Mini Lite and Roos



Rockwood Freedom, ESP, Premier, High Wall & Hard Side Camping Trailers.

Specification Definitions

GVWR (Gross Vehicle Weight Rating) - is the maximum permissible weight of the unit when fully loaded. It includes all weights, inclusive of all fluids, cargo, optional equipment and accessories. For safety and product performance do NOT exceed the GVWR.

GAWR (Gross Axle Weight Rating) - is the maximum permissible weight, including cargo, fluids, optional equipment and accessories that can be safely supported by a combination of all axles.

UVW (Unloaded Vehicle Weight)** - is the typical weight of the unit as manufactured at the factory. It includes all weight at the unit's axle(s) and tongue or pin and LP Gas. The UVW does not include cargo, fresh potable water, additional optional equipment or dealer installed accessories.

*Estimated average based on standard build optional equipment.

CCC (Cargo Carrying Capacity)** - is the amount of weight available for fresh potable water, cargo, additional optional equipment and accessories. CCC is equal to GVWR minus UVW. Available CCC should accommodate fresh potable water (8.3 lbs per gallon). Before filling the fresh water tank, empty the black and gray tanks to provide for more cargo capacity.

**Estimated average based on standard build optional equipment

Each Forest River RV is weighed at the manufacturing facility prior to shipping. A label identifying the unloaded vehicle weight of the actual unit and the cargo carrying capacity is applied to every Forest River RV prior to leaving our facilities.

The load capacity of your unit is designated by weight, not by volume, so you cannot necessarily use all available space when loading your unit.

ROCKWOOD WARRANTY

For details on Rockwood's complete warranty program, see your Rockwood dealer. When it comes to backing products with the same quality and commitment it does when it begins the manufacturing process, the only name you have to remember when you're looking for a recreational vehicle is Rockwood. Rockwood offers the following additional limited warranties to the original purchasers. Consult written warranty for details.

1. Twelve-year vinyl roof warranty,
2. Two-year fiberglass warranty,
3. Ten-year Torflex® axle warranty,
4. One-year bumper to bumper warranty,
5. Available second-year warranty



Learn More

Scan this barcode using a QR Reader on your smart phone to learn more about Forest River.



A Berkshire Hathaway company.



201 WEST ELM MILLERSBURG, IN 46543 WWW.FORESTRIVERINC.COM/ROCKWOOD 574.642.2640

YOUR ROCKWOOD DEALER

All information contained in this brochure is believed to be accurate at the time of publication. However, during the model year, it may be necessary to make revisions and Forest River, Inc., reserves the right to make all such changes without notice, including prices, colors, materials, equipment and specifications as well as the addition of new models and the discontinuance of models shown in this brochure. Therefore, please consult with your Forest River dealer and confirm the existence of any materials, design or specifications that are material to your purchase decision. Litho. U.S.A. FOR 1386 P/W: 2016.10.25