

# MINNIE PLUS

**WINNEBAGO**

**WINNEBAGO**



# Winnebago Minnie Plus Time to go camping

Want plus storage, plus living space, plus features? Then come home to the Minnie Plus trailer. Spacious floorplans begin with residential sized queen beds, full depth slide outs and private bathrooms. Upgrade counter tops with stainless steel sinks, bright interiors, and an abundance of storage inside and out. The domed ceiling provides additional height and there is very little carpet making the camper easy to clean. Review the standard features list and see all the amazing included items.

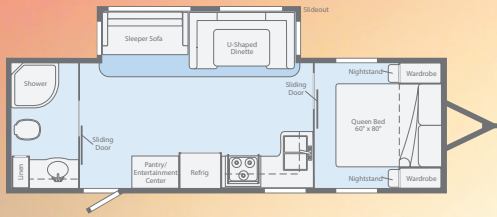


**27BHSS**  
Stone Décor

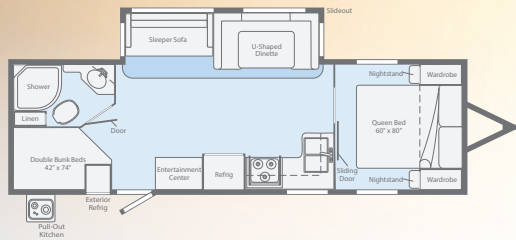


# FLOORPLANS, SPECIFICATIONS & EXTERIOR COLORS

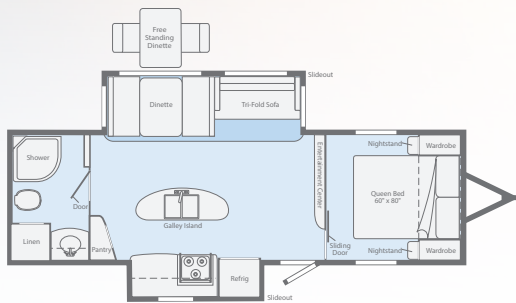
## FLOORPLANS



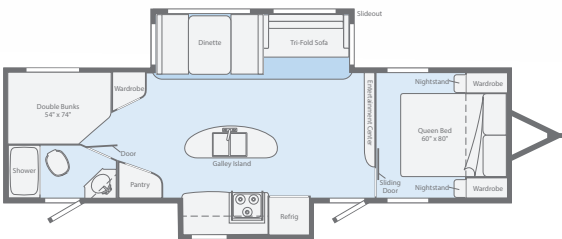
26RBSS



27BHSS



27RBDS

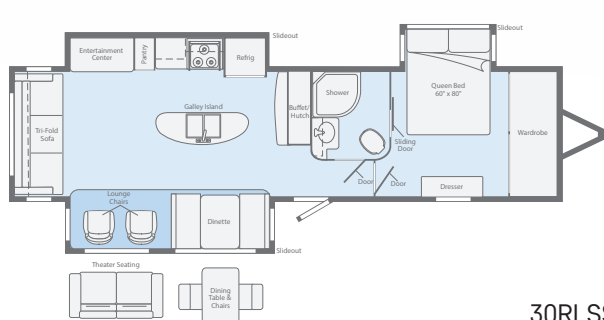
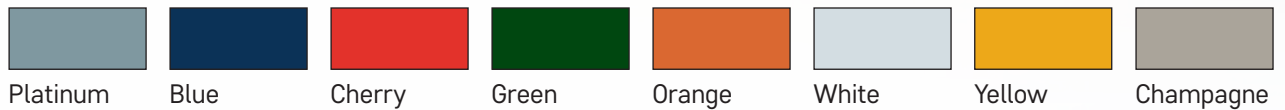


28DBBH

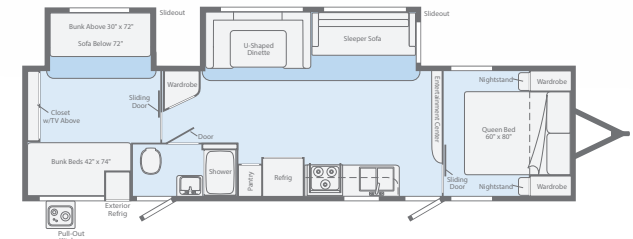
## SPECIFICATIONS

	26RBSS	27BHSS	27RBDS	28DBBH	30RLSS	31BHDS
Exterior Length	29'6"	32'0"	30'7"	33'10"	36'11"	35'6"
Exterior Height (With AC)	10'10"	10'10"	10'10"	10'10"	10'10"	10'10"
Exterior Width	8'0"	8'0"	8'0"	8'0"	8'0"	8'0"
Interior Height	6'8"	6'8"	6'8"	6'8"	6'8"	6'8"
GVWR	8,800	8,800	8,800	8,800	TBD	8,800
Dry Weight (lbs)	6,280	6,500	6,360	6,740	TBD	7,440
Dry Hitch Weight (lbs)	740	640	760	720	TBD	860
Axles (lbs)	2 @ 4,400	2 @ 4,400	2 @ 4,400	2 @ 4,400	2 @ 5,200	2 @ 4,400
Tire Size	ST225/75R15D	ST225/75R15D	ST225/75R15D	ST225/75R15D	ST225/75R15D	ST225/75R15D
Fresh Water Tank (Gal)	50	50	50	50	50	50
Black Tank Capacity (Gal)	28	28	28	28	44	28
Grey Tank Capacity (Gal)	69	69	69	69	41	69
LP Capacity (lbs)	60	60	60	60	60	60
Awning Length	17'	20'	20'	20'	12'	17'
Slide-outs	1	1	2	2	3	2
Furnace (BTUs)	35,000	35,000	35,000	35,000	35,000	35,000
Water Heater	6	6	6	6	6	6

## EXTERIOR COLORS



30RLSS



31BHDS

## STANDARDS & OPTIONS

### Interior

- Bedspread
- Cable TV Hook Up
- Carbon Monoxide Detector
- LP Gas Detector
- Smoke Alarm
- Range Hood w/ Vent
- Stereo/Bluetooth/DVD/USB
- Bathroom Skylight
- Night Shades
- Full Extension Drawer Guides
- Tub Surround
- Power Bath Vent
- Sink Covers
- LED Lighting
- Stainless Steel Sink
- 6 Gallon DSI/Gas/Electric Water Heater
- Double Door Gas/Electric Refrigerator
- 25,000 BTU Furnace
- Three Burner Cooktop w Oven
- Glass Cooktop Cover
- Bedroom Roof Vent
- Ducted Roof Air
- Plywood Flooring
- Foot Pedal Flush Toilet
- Microwave
- Radius Ceiling
- Solid Surface Counter Top

### Exterior

- TV Antenna
- Patio Speakers
- Spare Tire w Carrier
- LP Quick Connect
- Detachable Power Cord
- Diamond Plate Rock Guard
- Lockable Storage Door
- Satellite Hook Up
- 12V Power Awning
- LED Awning Lights
- Winterization Kit

- Battery Disconnect
- Bumper Sewer Hose Carrier
- Aluminum Framing
- Dual 30# LP Tank
- Fiberglass Front Cap
- 13.5 Roof Air
- 4 Pt Stab Jacks
- Power Tongue Jack
- Outside TV Hook Up
- Aluminum Triple Step
- Aluminum Fender Skirt
- Docking Station
- Enclosed Heated Underbelly
- 15" Deluxe Aluminum Rims
- Exterior Spray Port
- Roof Ladder

### Options

- Secondary Awning (31BHDS only)
- Dual Pane Windows
- 13.5M 2nd A/C (31BHDS only)
- 15.0M BTU A/C Upgrade
- 10 Gallon Gas/Electric/DSI Water Heater
- 15.0 Roof Air
- Fireplace (31BHDS & 31RLSS only)
- 50AMP Service w/2nd A/C (31BHDS & 31RLSS only)
- Two Folding Chairs
- Free Standing Table with 2 Chairs
- Theatre Seating IPO Recliners

### Exterior Color Options

- Platinum
- Blue
- Cherry
- White
- Orange
- Champagne
- Yellow
- Green



Minnie Plus features aluminum framing laminated with block foam insulation, true gel coat fiberglass exterior, and designer interior décor panels.



5/8" 5-Ply Tongue & Groove Plywood makes a solid foundation for all Winnebago Trailers.



No detail is missed as the Minnie Plus moves along the production line. We can build yours today!



### PREFERRED CARE PROGRAM

We back our towable products with best-in-class support.

• Complimentary 24-hour roadside assistance program	• Lock-out Service
• Flat Tire Changes	• Fuel Delivery
• Towing	• Jump-Starts
• Mobile Mechanic	• Service Appointment
• RV Technical Support	• Tow Vehicle Covered When Towing





[www.witclub.com](http://www.witclub.com)



Have a question about Minnie Plus?

Email [SalesW01@WGO.net](mailto:SalesW01@WGO.net).

# WINNEBAGO

**Winnebago of Indiana**

201 14th Street, P.O. Box 2001  
Middlebury, IN 46540 (574) 825-5250

[www.winnebagoind.com](http://www.winnebagoind.com)

Your Winnebago Dealer