



EAGLE | 2017



EAGLE™

2
YEAR
WARRANTY



#LETSJAYCO

Where do you want to go? With Jayco, you're headed straight for family fun—regardless of the destination. From wooded campgrounds to sandy beaches, swimming hole docks to scenic byways, maximize the moment with unmatched quality and added comfort. So what are you waiting for? Make new memories—and share them with the world.

GENERATIONS OF FAMILY FUN



Eagle HT Travel Trailers: Page 4



Eagle Travel Trailers: Page 6



Eagle HT Fifth Wheels: Page 10



Eagle Fifth Wheels: Page 12

EAGLE

YOUR OWN BRAND OF FUN

The most diverse lineup yet of Eagle travel trailers and fifth wheels provides an unmatched combination of livability and fun. Fine finishes throughout, high-end standard features and an array of options make for escapes that are as exhilarating or relaxing as you want them to be.



EAGLE™

For over 25 years, Jayco's Eagle brand has represented quality and innovation in camping for the entire RV industry. Building on the past success of the popular brand, great efforts have been taken to further enhance best-selling floorplans, add useful new technology and ideas, fully address customers' wish list items and expectations, and create a truly best-in-class feature set. With thanks and consideration to strongly loyal customers and repeat buyers, Jayco's team of skilled craftsmen, engineers and designers are proud to present the 2017 Eagle.

DISCOVER ONE OF THE LONGEST-RUNNING, MOST SUCCESSFUL RV BRANDS ON THE MARKET

Our offerings have been among the top five best-selling fifth wheel lines in the U.S. for 21 of the last 26 years.



1991 Eagle travel trailer and fifth wheel lines debut

1994 Eagle lightweight series debuts

1997 Eagle becomes the No. 1-selling fifth wheel in the U.S.

2007 Eagle wins its first DSI Award—and has won the award every year since

2008 Jayco celebrates its 40th anniversary; Eagle half-ton line debuts

2016 25th anniversary of Eagle line



With 25 years of customer satisfaction, Jayco's Eagle brand is the longest-running, most successful fifth wheel being built today. Every year, the Recreation Vehicle Dealers Association (RVDA) conducts a private Dealer Satisfaction Index survey of hundreds of RV dealers in the U.S. and Canada. Jayco is honored to report that the **Eagle product line** received the very prestigious **Quality Circle Award** for the ninth year in a row!

Only a select few manufacturers and products are chosen each year to receive the Quality Circle Award. The award criteria is based on Sales Support, Sales Territory, Vehicle Design, Vehicle Reliability/Quality, Competitive Price/Value, Parts Support, Dealership Warranty Support and Overall Dealer Communication.



324BHTS | MEADOW (SHOWN WITH OPTIONAL PARTY SOFA)



EAGLE HT TRAVEL TRAILER

A well-appointed blend of comfort and function, the new Eagle HT travel trailer lineup offers industry-exclusive features and options in unique floorplan concepts.



324BHTS | MEADOW (SHOWN WITH OPTIONAL PARTY SOFA)



324BHDS BUNKHOUSE WITH OPTIONAL HIDE-A-BED



314BHDS BUNKHOUSE (TV OPTIONAL)



314BHDS KITCHEN



314BHDS GAMER SEATS



338RETS | CASHMERE (SHOWN WITH OPTIONAL REFRIGERATOR)



EAGLE TRAVEL TRAILER

The fully redesigned Eagle travel trailer series is brimming with a list of premium standard features, thoughtful options and popular upgrades, setting a new standard for luxury RVing.



338RETS | CASHMERE (SHOWN WITH OPTIONAL REFRIGERATOR)



ROLLING ISLAND PANTRY (OPTIONAL)



STANDARD WASHER/DRYER PREP



338RETS BEDROOM WITH OPTIONAL SIMMONS® KING-SIZE MATTRESS



338RETS KITCHEN (SHOWN WITH OPTIONAL REFRIGERATOR)



338RETS BATHROOM

8 EAGLE HT TRAVEL TRAILER FLOORPLANS



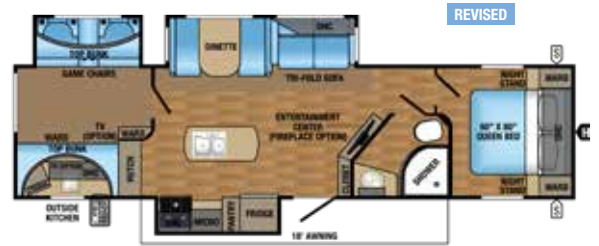
EAGLE HT TRAVEL TRAILER | 295DBOK OPTIONS: A, B
 Ext. Lgth: 37' 10" Ext. Ht: 138" Unloaded Wt (lbs.): 8,095 Sleeps: 6-10



EAGLE HT TRAVEL TRAILER | 306RKDS OPTIONS: B, C
 Ext. Lgth: 35' 9" Ext. Ht: 138" Unloaded Wt (lbs.): 7,630 Sleeps: 4-6



EAGLE HT TRAVEL TRAILER | 314BHDS OPTIONS: A, B, D
 Ext. Lgth: 37' 10" Ext. Ht: 138" Unloaded Wt (lbs.): 8,200 Sleeps: 8-10



EAGLE HT TRAVEL TRAILER | 324BHTS OPTIONS: A, B, D
 Ext. Lgth: 38' 4" Ext. Ht: 138" Unloaded Wt (lbs.): 8,585 Sleeps: 8-10

EAGLE TRAVEL TRAILER FLOORPLANS



EAGLE TRAVEL TRAILER | 320RLTS OPTIONS: B, E
 Ext. Lgth: 38' 5" Ext. Ht: 141" Unloaded Wt (lbs.): 9,165 Sleeps: 4-6



EAGLE TRAVEL TRAILER | 330RSTS OPTIONS: B, E, F
 Ext. Lgth: 39' 3" Ext. Ht: 137" Unloaded Wt (lbs.): 9,410 Sleeps: 4-6



EAGLE TRAVEL TRAILER | 333BHOK OPTIONS: A, B, D, E
 Ext. Lgth: 41' 8" Ext. Ht: 142" Unloaded Wt (lbs.): 10,040 Sleeps: 8-10



EAGLE TRAVEL TRAILER | 338RETS OPTIONS: B, C, E
 Ext. Lgth: 39' 3" Ext. Ht: 140" Unloaded Wt (lbs.): 9,130 Sleeps: 4-6

OPTIONS:



FLOORPLAN LEGEND:



EAGLE HT TRAVEL TRAILER SPECS

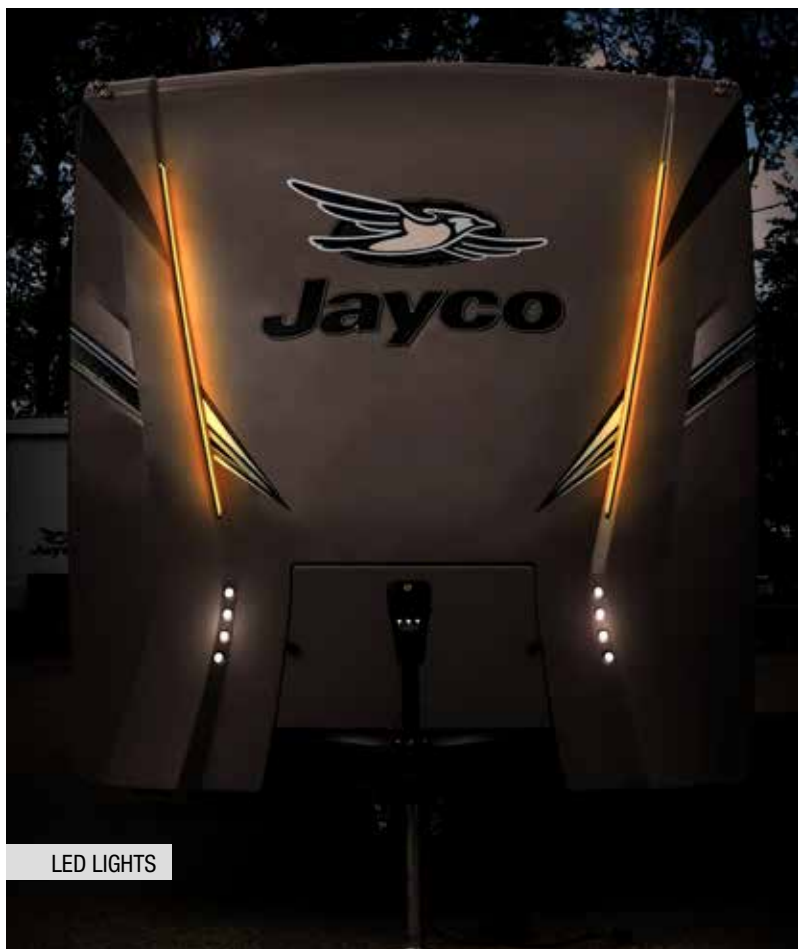
MODELS		DIMENSIONS			WEIGHT (LBS.)				TANKS (GALS.)		
FLOORPLAN	EXTERIOR TRAVEL LENGTH	EXTERIOR WIDTH	EXTERIOR HEIGHT (WITH A/C)	INTERIOR HEIGHT	UNLOADED VEHICLE WEIGHT	DRY HITCH WEIGHT	GROSS VEHICLE WEIGHT RATING	CARGO CARRYING CAPACITY	FRESH WATER CAPACITY (INCLUDES WATER HEATER)	GREY WASTE WATER CAPACITY	BLACK WASTE WATER CAPACITY
295DBOK	37' 10"	96"	138"	84"	8,095	855	10,950	2,855	81	73**	32.5
306RKDS	35' 9"	96"	138"	84"	7,630	1,060	9,750	2,120	81	65**	32.5
314BHDS	37' 10"	96"	138"	84"	8,200	1,150	10,950	2,750	81	40.5**	32.5
324BHTS	38' 4"	96"	138"	84"	8,585	900	10,950	2,365	81	65**	32.5

**Multiple tanks

NEW FRONT CAP DESIGN



EAGLE TT FRONT CAP WITH INTEGRATED BOTTLE COVER



LED LIGHTS

EAGLE TRAVEL TRAILER SPECS

MODELS		DIMENSIONS			WEIGHT (LBS.)				TANKS (GALS.)		
FLOORPLAN	EXTERIOR TRAVEL LENGTH	EXTERIOR WIDTH	EXTERIOR HEIGHT (WITH A/C)	INTERIOR HEIGHT	UNLOADED VEHICLE WEIGHT	DRY HITCH WEIGHT	GROSS VEHICLE WEIGHT RATING	CARGO CARRYING CAPACITY	FRESH WATER CAPACITY (INCLUDES WATER HEATER)	GREY WASTE WATER CAPACITY	BLACK WASTE WATER CAPACITY
320RLTS	38' 5"	96"	141"	87"	9,165	1,200	11,250	2,085	81	97.5**	32.5
330RSTS	39' 3"	96"	137"	87"	9,410	1,300	11,250	1,950	81	97.5**	32.5
333BHOK	41' 8"	96"	142"	87"	10,040	1,450	12,250	2,210	81	97.5**	32.5
338RETS	39' 3"	96"	140"	87"	9,130	1,235	11,250	2,120	81	97.5**	32.5

**Multiple tanks

Unloaded Vehicle Weight (UUV): Sometimes referred to as "Dry Weight," UUV means the typical weight of this trailer as built at the factory. The UUV, as used in product literature and other promotional materials, does not include cargo, fresh water, propane, options or dealer-installed accessories.

Gross Vehicle Weight Rating (GVWR): GVWR means the maximum permissible weight of the trailer, including the UUV plus passengers, personal items, all cargo, fluids, options and dealer-installed accessories. The GVWR is equal to or greater than the sum of the UUV and the CCC.

Cargo Carrying Capacity (CCC): CCC means the maximum weight of all passengers, personal items, food, fresh water, propane, tools, other cargo and dealer-installed accessories that can be carried by the trailer. CCC is equal to or less than GVWR minus UUV. The addition of options will decrease the CCC.

Hitch Weight (HW): The hitch weight, as used in product literature and other promotional materials, does not include cargo, fresh water, propane gas, options or dealer-installed accessories. The addition of these types of items will either add to or subtract from the stated hitch weight.

It is important for your safety and enjoyment that your tow vehicle be adequately sized and equipped to tow and handle the GVWR of the RV you select. Review weights and rating of your tow vehicle and consult a competent advisor for questions or advice. Whether you are new to RVing or a veteran, get a feel for the performance of your tow vehicle before heading out on the roadways. When you tow an RV, you must drive differently than when you drive a single vehicle. Practice hooking up, driving, backing up and braking in a safe environment or seek out professional instruction. Jayco affixes a weight label to each RV which lists weight information for that vehicle. See specifications charts above.



28.5RSTS | JAVA



EAGLE HT FIFTH WHEEL

Built in shorter lengths and lighter weights to match up with today's half-ton trucks, Eagle HT fifth wheels offer incredible value without sacrificing function or quality.



29.5BHDS | JAVA



28.5RSTS | JAVA



28.5RSTS BATHROOM



29.5BHOK BUNKS



29.5BHDS DOUBLE BUNKS (600-POUND MAX)



29.5BHOK | PEPPERCORN



317RLOK | JAVA



321RSTS | PEPPERCORN



317RLOK THEATER SEATING



OPTIONAL 12-CUBIC-FOOT REFRIGERATOR



OPTIONAL 23-CUBIC-FOOT REFRIGERATOR WITH 1,000-WATT INVERTER



321RSTS BEDROOM WITH OPTIONAL SIMMONS® KING-SIZE MATTRESS



EAGLE FIFTH WHEEL

Unique, industry-defining design and features paired with an exceptional record of innovation and best-in-class construction set Eagle fifth wheels apart, year after year.



321RSTS | PEPPERCORN (SHOWN WITH OPTIONAL REFRIGERATOR)



EAGLE HT FIFTH WHEEL | 24.5CKTS **OPTION A**
Ext. Lgth: 29' 5" Ext. Ht: 144" Unloaded Wt (lbs.): 7,420 Sleeps: 4-6



EAGLE HT FIFTH WHEEL | 26.5BHs **OPTIONS: A, B**
Ext. Lgth: 31' 9" Ext. Ht: 148" Unloaded Wt (lbs.): 7,185 Sleeps: 6-10



EAGLE HT FIFTH WHEEL | 26.5RLS **OPTION A**
Ext. Lgth: 29' 11" Ext. Ht: 143" Unloaded Wt (lbs.): 7,350 Sleeps: 4-6



EAGLE HT FIFTH WHEEL | 27.5RKDs **OPTION A**
Ext. Lgth: 30' 11" Ext. Ht: 147" Unloaded Wt (lbs.): 7,560 Sleeps: 4-6



EAGLE HT FIFTH WHEEL | 27.5RLTs
Ext. Lgth: 30' 11" Ext. Ht: 143" Unloaded Wt (lbs.): 7,865 Sleeps: 3-4



EAGLE HT FIFTH WHEEL | 28.5BHxB **OPTIONS: A, B, C**
Ext. Lgth: 35' 2" Ext. Ht: 148" Unloaded Wt (lbs.): 8,915 Sleeps: 7-9



EAGLE HT FIFTH WHEEL | 28.5RSTs **OPTION D**
Ext. Lgth: 32' 11" Ext. Ht: 142" Unloaded Wt (lbs.): 8,405 Sleeps: 3-4



EAGLE HT FIFTH WHEEL | 29.5BHDS **OPTIONS: A, B**
Ext. Lgth: 34' 7" Ext. Ht: 148" Unloaded Wt (lbs.): 8,425 Sleeps: 6-10



EAGLE HT FIFTH WHEEL | 29.5BHOK **OPTIONS: A, B**
Ext. Lgth: 35' 3" Ext. Ht: 149" Unloaded Wt (lbs.): 8,590 Sleeps: 8-10



EAGLE HT FIFTH WHEEL | 29.5FBDS **OPTIONS: A, B**
Ext. Lgth: 34' 4" Ext. Ht: 148" Unloaded Wt (lbs.): 8,195 Sleeps: 8-10



EAGLE HT FIFTH WHEEL | 30.5MBOK **OPTION A**
Ext. Lgth: TBD Ext. Ht: TBD Unloaded Wt (lbs.): TBD Sleeps: TBD

OPTIONS:



FLOORPLAN LEGEND:

- STORAGE
- TRAILER HITCH
- BATHROOM SINK
- MEDICINE CABINET
- MICROWAVE
- OVERHEAD CABINETS
- REFRIGERATOR
- WARDROBE

EAGLE HT FIFTH WHEEL SPECS

MODELS	DIMENSIONS					WEIGHT (LBS.)				TANKS (GALS.)		
	FLOORPLAN	EXTERIOR TRAVEL LENGTH	EXTERIOR TRAVEL LENGTH*	EXTERIOR WIDTH	EXTERIOR HEIGHT (WITH A/C)	INTERIOR HEIGHT (UPPER DECK)	UNLOADED VEHICLE WEIGHT	DRY HITCH WEIGHT	GROSS VEHICLE WEIGHT RATING	CARGO CARRYING CAPACITY	FRESH WATER CAPACITY (INCLUDES WATER HEATER)	GREY WASTE WATER CAPACITY
24.5CKTS	29' 5"	28' 7"	96"	144"	75"	7,420	1,285	9,950	2,530	48	65**	32.5
26.5BHS	31' 9"	30' 11"	96"	148"	75"	7,185	1,370	9,950	2,765	48	32.5	32.5
26.5RLS	29' 11"	29' 1"	96"	143"	75"	7,350	1,445	9,950	2,600	48	65**	32.5
27.5RKDS	30' 11"	30' 1"	96"	147"	75"	7,560	1,580	9,950	2,390	48	65**	32.5
27.5RLTS	30' 11"	30' 1"	96"	143"	75"	7,865	1,490	9,950	2,085	48	65**	32.5
28.5BHXB	35' 2"	24' 4"	96"	148"	75"	8,915	1,670	11,000	2,085	49	97.5**	65**
28.5RSTS	32' 11"	32' 0"	96"	142"	75"	8,405	1,520	9,995	1,590	49	65**	32.5
29.5BHDS	34' 7"	33' 9"	96"	148"	75"	8,425	1,610	9,995	1,570	49	73**	32.5
29.5BHOK	35' 3"	34' 6"	96"	149"	75"	8,590	1,695	11,000	2,410	49	73**	32.5
29.5FBDS	34' 4"	33' 5"	96"	148"	88"	8,195	1,590	9,950	1,755	49	65**	32.5
30.5MBOK	TBD	TBD	TBD	TBD	TBD	TBD	TBD	TBD	TBD	TBD	TBD	TBD

*Distance from the pinbox to the bumper; total exterior length may be longer

**Multiple tanks



STANDARD INTEGRATED REAR 2-INCH RECEIVER HITCH WITH 300-POUND TONGUE CAPACITY AND 3,000-POUND TOW RATING (EAGLE HT ONLY)



29.5BHOK OUTSIDE KITCHEN

EAGLE FIFTH WHEEL SPECS

MODELS	DIMENSIONS					WEIGHT (LBS.)				TANKS (GALS.)			
	FLOORPLAN	EXTERIOR TRAVEL LENGTH	EXTERIOR TRAVEL LENGTH*	EXTERIOR WIDTH	EXTERIOR HEIGHT (WITH A/C)	EXTERIOR HEIGHT (WITH OPTIONAL BEDROOM A/C)	INTERIOR HEIGHT (UPPER DECK)	UNLOADED VEHICLE WEIGHT	DRY HITCH WEIGHT	GROSS VEHICLE WEIGHT RATING	CARGO CARRYING CAPACITY	FRESH WATER CAPACITY (INCLUDES WATER HEATER)	GREY WASTE WATER CAPACITY**
291RSTS	34' 4"	33' 5"	96"	154"	160"	78"	9,685	1,735	12,000	2,315	81	85	50
293RKDS	35' 3"	34' 4"	96"	154"	159"	78"	9,575	1,900	11,995	2,420	81	87	50
317RLOK	36' 11"	36' 0"	96"	155"	161"	78"	10,345	2,015	12,750	2,405	81	87	50
321RSTS	36' 11"	36' 0"	96"	153"	160"	78"	10,075	2,070	12,500	2,425	81	87	50
325BHQS	38' 7"	37' 8"	96"	158"	160"	78"	11,135	2,245	13,750	2,615	81	93	50
327CKTS	38' 4"	37' 5"	96"	154"	159"	78"	10,610	2,055	12,950	2,340	81	87	50
336FBOK	40' 1"	39' 2"	96"	154"	161"	78"	10,895	2,050	13,750	2,855	81	87	87
339FLQS	39' 5"	38' 6"	96"	152"	158"	96"	10,620	2,005	12,950	2,775	81	74	37
345BHTS	40' 7"	39' 8"	96"	161"	161"	78"	10,925	2,240	13,750	2,825	81	95	87**
355MBQS	40' 7"	39' 8"	96"	154"	159"	78"	11,530	2,385	14,250	2,720	81	87	50
360QBOK	40' 6"	39' 8"	96"	160"	161"	78"	11,390	2,065	13,750	2,360	81	95	87**

*Distance from the pin box to the bumper; total exterior length may be longer

**Multiple tanks



355MBQS BUNKHOUSE DESK



355MBQS BUNKHOUSE



EAGLE FIFTH WHEEL | 291R1TS **OPTION A**

Ext. Lgth: 34' 4" Ext. Ht: 154"
Unloaded Wt (lbs.): 9,685 Sleeps: 3-4



EAGLE FIFTH WHEEL | 293RKDS **OPTIONS: A, B**

Ext. Lgth: 35' 3" Ext. Ht: 154"
Unloaded Wt (lbs.): 9,575 Sleeps: 4-6



EAGLE FIFTH WHEEL | 317RLOK **OPTION C**

Ext. Lgth: 36' 11" Ext. Ht: 155"
Unloaded Wt (lbs.): 10,345 Sleeps: 3-4



EAGLE FIFTH WHEEL | 321R1TS **OPTIONS: A, C**

Ext. Lgth: 36' 11" Ext. Ht: 153"
Unloaded Wt (lbs.): 10,075 Sleeps: 3-4



EAGLE FIFTH WHEEL | 325BHQS **OPTIONS: A, B, D**

Ext. Lgth: 38' 7" Ext. Ht: 158"
Unloaded Wt (lbs.): 11,135 Sleeps: 7-8



EAGLE FIFTH WHEEL | 327CKTS **OPTION C**

Ext. Lgth: 38' 4" Ext. Ht: 154"
Unloaded Wt (lbs.): 10,610 Sleeps: 3-4



EAGLE FIFTH WHEEL | 336FBOK **OPTION C**

Ext. Lgth: 40' 1" Ext. Ht: 154"
Unloaded Wt (lbs.): 10,895 Sleeps: 3-5



EAGLE FIFTH WHEEL | 339FLQS **OPTION C**

Ext. Lgth: 39' 5" Ext. Ht: 152"
Unloaded Wt (lbs.): 10,620 Sleeps: 4-6



EAGLE FIFTH WHEEL | 345BHTS **OPTIONS: B, C, D, E**

Ext. Lgth: 40' 7" Ext. Ht: 161"
Unloaded Wt (lbs.): 10,925 Sleeps: 8-10



EAGLE FIFTH WHEEL | 355MBQS **OPTIONS: A, B, D, E**

Ext. Lgth: 40' 7" Ext. Ht: 154"
Unloaded Wt (lbs.): 11,530 Sleeps: 8-11



EAGLE FIFTH WHEEL | 360QBOK **OPTIONS: B, D, E**

Ext. Lgth: 40' 6" Ext. Ht: 160"
Unloaded Wt (lbs.): 11,390 Sleeps: 9-11

OPTIONS:

OPTION A



OPTION B



OPTION C



OPTION D



OPTION E



FLOORPLAN LEGEND:

- STORAGE
- TRAILER HITCH
- LAV BATHROOM SINK
- MED MEDICINE CABINET
- MICRO MICROWAVE
- OHC OVERHEAD CABINETS
- FRIDGE REFRIGERATOR
- WARD WARDROBE

MAKING MEMORIES THAT LAST GENERATIONS—LET'S JAYCO

Whether you're out for excitement, relaxation or just time together, we take steps others don't to help you stay focused on the fun. No cutting corners here. Let us go the extra mile so you don't have to.



JAYCO'S ROOF **VS** OTHER ROOFS



4,500 POUNDS ON A JAYCO ROOF VS. OTHER ROOFS

THE MAGNUM TRUSS™ ROOF SYSTEM
50 percent stronger

THE JAYCO DIFFERENCE

When you choose Jayco, you get the strongest foundation in the business, unmatched weatherproofing and rock-solid construction.

1. **Tuff-Shell vacuum-bonded, aluminum-framed, laminated sidewalls, end walls and slide room walls** provide a durable, lightweight, well-insulated structure for better protection from the elements



2. **Magnum Truss Roof System** withstands 4,500 pounds—50 percent more than other RV roofs
3. **Double layer of fiberglass insulation** behind the front cap, plus radiant barrier bubble foil and fiberglass insulation in floors to provide extra warmth where it's needed most
4. **Aerodynamic fiberglass front cap** withstands the rigors of the road with infused pigment and gel coating, plus specialty bracing for additional support—not typically found on competing fifth wheels



CLIMATE SHIELD™

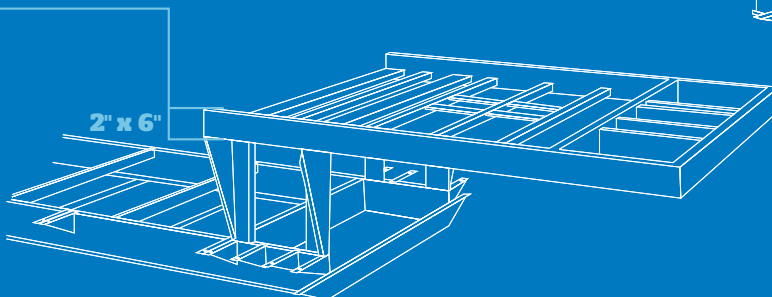
Extend your camping season with the **Jayco Climate Shield™**.

It protects against extreme heat and extreme freezing—even in temperatures as high as 100 degrees or as low as zero degrees (Fahrenheit).*

*Eagle was tested in zero degrees F and 100 degrees F weather over an extended period of time in a controlled environment, and all functions of the coach were fully operational. Testing was done in a completely controlled environment; therefore, temperatures during testing may not represent actual temperatures in nature and cannot account for elements such as wind or moisture. In actual use, unit may not perform as well. Supplier of cooling components does not guarantee anything better than 20 degrees difference from ambient temperature. In addition, outside components are subject to freezing and require steps to properly insulate. Jayco's limited warranty does not cover damage caused by freezing. To learn more about Climate Shield and testing done by Jayco, visit www.jayco.com.

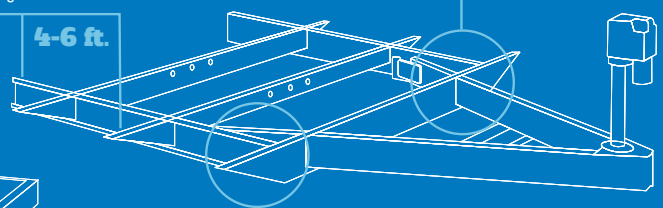
WE START WITH ONE OF THE INDUSTRY'S **strongest foundations**

Fifth wheel frame: The frame over the truck bed is built on a superior 2-inch x 6-inch tube perimeter structure to better support the bedroom sidewalls. Competing fifth wheels have a smaller frame; these manufacturers add a sidewall support seam to compensate for expansion joints.



Many competitors modify or weld stock frames, which can weaken the integrity of your foundation. Jayco's custom-manufactured frames offer higher strength and durability.

Full-width outriggers: We build on full-width outriggers that are spaced 4-6 feet apart (vs. 8 feet) to better support the weight of the wall.



I-class cambered structural steel I-beams: Jayco uses a unique molded, one-piece design to prevent the unit from twisting; competing three-piece I-beams can warp over time at the welded seams.

Learn more at StrongFoundation.Jayco.com

	HTFW	FW	HTTT	TT
Customer Value Package (mandatory)				
Residential queen (60-inch x 80-inch) Simmons® mattress with under-bed storage	CVP	CVP	CVP	CVP
Electric patio awning with integrated LED lights	CVP	CVP	CVP	CVP
Custom-machined aluminum rims	CVP	CVP	CVP	CVP
MOR/ryde® CRE3000™ rubberized suspension	CVP	CVP	CVP	CVP
Rear 2-inch receiver	CVP	CVP	CVP	CVP
LED HDTV with fully digital HDMI® output	39-INCH*	48-INCH	39-INCH	48-INCH
12V AM/FM/CD/DVD/USB 3-zone AV system with Bluetooth® and HDMI	CVP	CVP	CVP	CVP
Stainless steel microwave with exhaust fan	CVP	CVP	CVP	CVP
Rain-proof EZ Breeze™ 350CFM bathroom power vent (patent pending, class exclusive)	CVP	CVP	CVP	CVP
Rooftop and ground solar prep by Go Power® (industry first)	CVP	CVP	CVP	CVP
Linc® wireless remote control system	CVP	CVP	CVP	CVP
Keyed-Alike™ lock system	CVP	CVP	CVP	CVP
Luxury Package (mandatory)				
Exterior high-gloss gelcoat upgrade	N/A	LUX PKG	N/A	LUX PKG
Handcrafted, Sugar Maple glazed, raised-panel maple cabinet doors	N/A	LUX PKG	N/A	LUX PKG
Soft-close residential kitchen drawers	N/A	LUX PKG	N/A	LUX PKG
Washer/dryer prep (n/a on 291RSTS, 325BHQ5 or 339FLOS)	N/A	LUX PKG	N/A	LUX PKG
Corian® solid-surface kitchen countertop with flush-mount sink covers	OPT	LUX PKG	OPT	LUX PKG
50-amp service with dual A/C ducting and second A/C prep	OPT	LUX PKG	OPT	LUX PKG
Frameless windows	OPT	LUX PKG	OPT	LUX PKG
LED fireplace, 5,000-BTU electric heater	OPT (SELECT MOD)	LUX PKG	OPT (SELECT MOD)	LUX PKG
Standard Exterior Equipment				
I-class cambered structural steel I-beam frame	•	•	•	•
Tuff-Shell™ aluminum-framed, vacuum-laminated, gelcoat fiberglass exterior walls (including rear wall and slide room end walls)	•	•	•	•
Magnum Truss™ Roof System (strongest tested roof in the industry) with one-piece, seamless DiFlex I material	•	•	•	•
Climate Shield™ zero-degree tested weather protection: <ul style="list-style-type: none"> Fully enclosed and heated underbelly (ducted) High-BTU-output furnace Double-layer fiberglass batt insulation in ceiling and floor Double-sided radiant barrier insulation in roof and slide room floors PEX plumbing 	•	•	•	•
High-gloss, fiberglass front cap with built-in LED lighting	•	•	•	•
LED exterior lighting package	•	•	•	•
Custom automotive-grade vinyl exterior graphics package	•	•	•	•
Power service with detachable Powersmart™ LED shore power cord	30-AMP	50-AMP	30-AMP	50-AMP
Dual 30-pound propane bottles with auto-regulator	•	•	•	•
Completely enclosed and protected electric slideout mechanisms	•	•	•	•
Sturdy, anti-slip Alumi-Tread™ entrance steps with safety light	•	•	•	•
Upgraded 30-inch x 72-inch entrance door with XL grab handle	•	•	•	•
Pass-through storage with Slam-latch™ baggage doors	•	•	•	•
Digital TV antenna	•	•	•	•
Exterior marine-grade speakers	•	•	•	•
Fully enclosed, LED-lit universal docking center with outside shower, city water connection and black tank flush	•	•	•	•
Independent satellite and whole-coach cable hookups	•	•	•	•
Battery disconnect	•	•	•	•
Water heater bypass	•	•	•	•
Best-in-class fresh water tank sizes	•	•	•	•
Under-mounted spare tire	•	•	•	•
LP quick connect (outside grill prep)	•	•	•	•
Roof ladder	•	•	•	•
Backup camera prep	•	•	•	•
Outside kitchen (select models)	•	•	•	•
Front electric landing gear	•	•	N/A	N/A
Front electric tongue jack	N/A	N/A	•	•
Front electric stabilizer jacks	N/A	N/A	OPT	•
Rear electric stabilizer jacks	OPT	•	OPT	•
15-inch steel-belted radial tires	•	N/A	•	•
16-inch 10-ply, load range E steel-belted radial tires	OPT	•	OPT	OPT
Standard Interior Equipment				
Solid, hardwood maple slideroom fascia	•	•	•	•
Handcrafted, Sugar Maple glazed drawers and trim	•	•	•	•
Heavy-duty, 75-pound, full-extension, steel ball-bearing drawer guides	•	•	•	•
5/8-inch tongue-and-groove joined plywood floor decking	•	•	•	•
Shaw® residential carpeting with R2X® stain guard	•	•	•	•
Shaw residential carpet pad with R-value and sound dampening	•	•	•	•
IVC® Trekk™ Wood Plank vinyl flooring (standard minimal carpeting)	•	•	•	•
LED interior lighting throughout	•	•	•	•

	HTFW	FW	HTTT	TT
Helix Cooling System (industry exclusive):	•	•	•	•
• Jayco-exclusive insulated duct design	•	•	•	•
• Directional and closeable A/C vents	•	•	•	•
• Larger return air vents with user-accessible filters	•	•	•	•
• Exterior-mounted 13,500-BTU Whisper Quiet A/C unit	•	N/A	•	N/A
• Exterior-mounted 15,000-BTU Whisper Quiet A/C unit	OPT	•	OPT	•
Central command center with built-in tank monitoring	•	•	•	•
Tri-fold hide-a-bed sofa with residential sleep surface	•	•	•	•
Swivel glider recliner(s) (select models)	•	•	•	•
Stainless steel kitchen sink	•	•	•	•
Brushed nickel kitchen faucet with pullout sprayer	•	•	•	•
Residential-style pantry storage	•	•	•	•
Stainless steel oven and sealed burner stovetop	•	•	•	•
8-cubic-foot gas/electric refrigerator with freezer	•	•	•	•
17.8-gallon-per-hour quick-recovery gas/electric DSI water heater (6-gallon)	•	•	•	•
Dual USB charging ports (kitchen and bedroom)	•	•	•	•
12V charging station	•	•	•	•
Extra 110V power outlets in kitchen and slide rooms	•	•	•	•
Pleated window shades	•	•	•	•
Bathroom skylight	•	•	•	•
LED vanity and residential-size mirror (industry exclusive)	•	•	•	•
Bathroom stone and glass tile backsplash	•	•	•	•
Residential-style shower with glass door	•	•	•	•
Bathroom blue LED night-light	•	•	•	•
Porcelain foot flush toilet	•	•	•	•
Residential quilted bedspread and pillows	•	•	•	•
Smart LED reading lights (with blue night-light mode)	•	•	•	•
CPAP prepped bedroom	•	•	•	•
Carbon monoxide and LP detector	•	•	•	•
Hardwood safety handrail on steps (upper bath deck FWs only)	•	•	N/A	N/A
110V ceiling fan (FW only)	N/A	•	N/A	N/A
Options				
Goodyear® Endurance Tires (made in the USA) (mandatory)	OPT	OPT	OPT	OPT
Canadian Standards	OPT	OPT	OPT	OPT
Freestanding Sugar Maple table with leaf, 2 storage and 2 folding chairs	OPT	OPT	OPT	OPT
Party sofa with stowable tables and hide-a-bed (select models, in place of standard booth and seating)	OPT (SELECT MOD)	OPT (SELECT MOD)	OPT (SELECT MOD)	OPT (SELECT MOD)
50-amp service with dual A/C ducting and second A/C prep	OPT	LUX PKG	OPT	LUX PKG
Second 15,000-BTU A/C ducted in bedroom (requires 50-amp service)	OPT	OPT	OPT	OPT
LED fireplace, 5,000-BTU electric heater (select models, requires 50-amp service)	OPT (SELECT MOD)	LUX PKG	OPT (SELECT MOD)	LUX PKG
Corian solid-surface kitchen countertop with flush-mount sink covers	OPT	LUX PKG	OPT	LUX PKG
Exterior bumper-mounted grill	OPT	OPT	OPT	OPT
Wall-hugger theater seating (select models, std. on 317RLOK, 336FBOK)	OPT	OPT	N/A	OPT
Second tri-fold hide-a-bed sofa (select models)	OPT (SELECT MOD)	OPT (SELECT MOD)	OPT (SELECT MOD)	OPT (SELECT MOD)
King-size Simmons mattress (n/a on 345BHTS, 360QBOK)	N/A	OPT (SELECT MOD)	N/A	OPT
MOR/ryde RPB rubber pin box	OPT	OPT	N/A	N/A
Reese® Revolution™ 90-degree pin box	OPT	N/A	N/A	N/A
12-cubic-foot refrigerator (n/a on 345BHTS, 360QBOK)	N/A	OPT (SELECT MOD)	N/A	OPT
23-cubic-foot residential refrigerator with 1,000-watt inverter (n/a on 345BHTS, 360QBOK)	N/A	OPT (SELECT MOD)	N/A	OPT
Rolling island pantry (320RLTS, 338RETS)	N/A	N/A	N/A	OPT
Second power awning (select models)	N/A	OPT (SELECT MOD)	N/A	OPT (SELECT MOD)
32-inch LED TV in master bedroom (select models)	N/A	OPT	N/A	OPT
32-inch LED TV in bunkhouse (select models)	OPT	OPT	OPT	OPT
32-inch LED TV in outside kitchen (select models)	OPT	OPT	OPT	OPT
Electric auto-leveling system	OPT	OPT	OPT	OPT
Girard® third-generation tankless water heater with digital thermostat	OPT	OPT	OPT	OPT
Sani-con® Turbo waste management system	OPT	OPT	OPT	OPT
Voyager® wireless backup/rearview camera and monitor kit	OPT	OPT	OPT	OPT
Dry Camping Package: generator prep and extra LP tank (select models)	OPT	OPT	N/A	N/A
Frameless windows	OPT	LUX PKG	OPT	LUX PKG
Frameless, dual-pane, tinted, safety-glass windows	OPT	OPT	OPT	OPT

CVP - Customer Value Package
OPT - Optional
OPT (SELECT MOD) - Optional on select models

LUX PKG - Luxury Package
N/A - Not Available
• - Standard

*32-inch TV on 26.5RLS



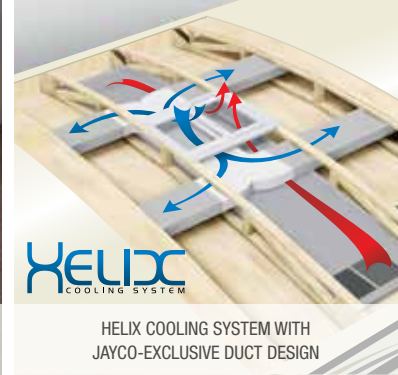
KEYED-ALIKE™ LOCK SYSTEM



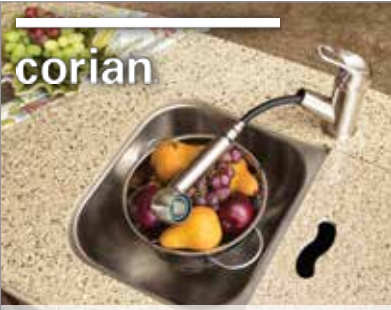
GOODYEAR® ENDURANCE RADIAL TIRES



CUSTOM LED-BACKLIT VANITY MIRROR



HELIX COOLING SYSTEM WITH JAYCO-EXCLUSIVE DUCT DESIGN



CORIAN® COUNTERTOP WITH PULLOUT SPRAYER FAUCET



MOR/RYDE® CRE3000™ RUBBERIZED SUSPENSION



QUEEN-SIZE FOAM-TOP SIMMONS® MATTRESS



360 SIPHON® RV VENT CAP



SHAW® RESIDENTIAL CARPETING WITH R2X® STAIN GUARD



POTS AND PANS DRAWER WITH 75-POUND CAPACITY



FURRION DV1200 AV SYSTEM WITH HDMI® AND BLUETOOTH®



INTEGRATED REAR 2-INCH RECEIVER



SUGAR MAPLE HARDWOOD SLIDE ROOM FASCIA



OPTIONAL SANI-CON® WASTE MANAGEMENT SYSTEM



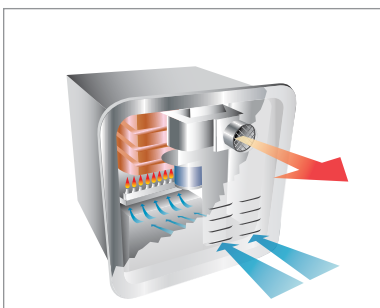
GO POWER® ROOFTOP AND GROUND SOLAR PREP



OPTIONAL VOYAGER® WIRELESS BACKUP/REARVIEW CAMERA AND MONITOR KIT



WIRELESS REMOTE CONTROL SYSTEM FOR SLIDE ROOMS, AWNING AND LIGHTING (OPTIONAL UPGRADE SHOWN)



OPTIONAL GIRARD® 3RD-GENERATION TANKLESS WATER HEATER WITH THERMOSTAT



OPTIONAL REESE® REVOLUTION™ 90-DEGREE PIN BOX



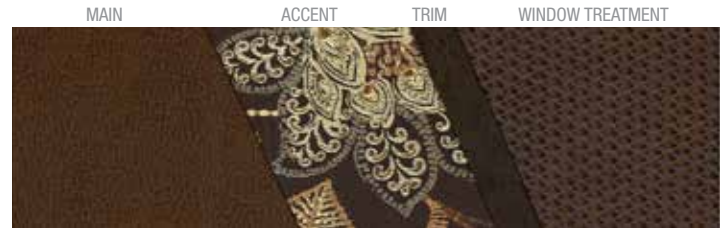
OPTIONAL MOR/RYDE "RPB" RUBBER PIN BOX

EAGLE INTERIOR DÉCOR

JAVA



PEPPERCORN



MEADOW



CASHMERE



Jayco's Industry-Leading 2-Year Limited Warranty

TRAVEL WITH CONFIDENCE

At Jayco, we build our RVs to handle every adventure, then back them with our industry-leading 2-year limited warranty. We, with support from our select partners, have you covered for **2 camping seasons**. That's **730 days**. You won't find a better warranty in the business, because the only strings we attach are those that deliver

the ultimate in reliability. That's the Jayco difference. So go explore. We have the warranty that will follow you anywhere. For a copy of our 2-year limited warranty with full terms and conditions, please contact your local Jayco dealer.



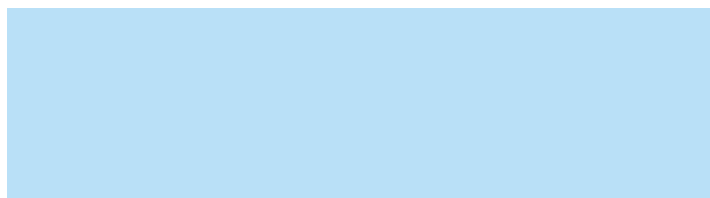
FREE

ROADSIDE ASSISTANCE

Coach-Net®

A year's access to Coach-Net™—the country's largest RV emergency road service.

Meet your Jayco Dealer



We work hard—so you can play hard. From finding the perfect Jayco for your family to providing flexible financing options and full-service support, we're here to help.

eco advantage™

Jayco's long-term commitment to generations of family fun

After five years of increased efforts to eliminate waste, conserve energy and increase recycling, we've come a long way in building RVs that are not only better for your family—but also better for the planet.

Learn more at Jayco.com/EcoAdvantage

Follow Jayco



Jayco, Inc., PO. Box 460, Middlebury, IN 46540, www.jayco.com ©RVIA See dealer for further information and prices. All information in this brochure is the latest available at the time of publication approval. Jayco reserves the right to make changes and to discontinue models without notice or obligation. Photos in this brochure may show optional equipment and props for photography purposes. RVs built for sale in Canada may differ to conform to Canadian codes. ©2016 Jayco, Inc. 274738 1016-20K Printed in U.S.A.